

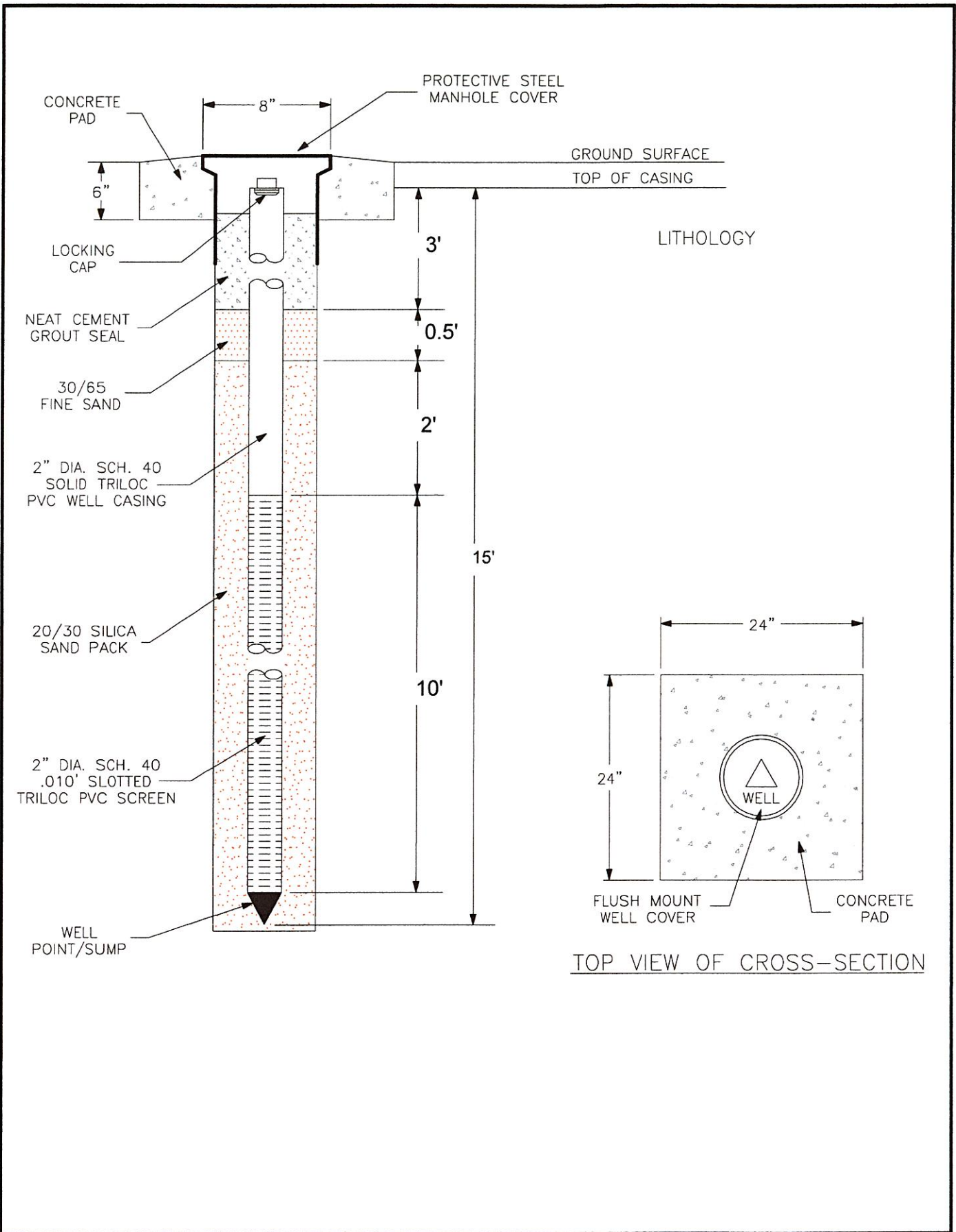
EXHIBIT B

PROPOSED MONITORING WELL CONSTRUCTION DETAIL

and

LOCATION DETAIL

Site	ROW Near Property: (Address)	ROW Near Property: (Broward Co Parcel ID)	Portion of ROW along (roadway)	Legal Description (see Exhibit)
Copans Rd Dump	500 West Copans Rd	4842 26 39 0010 & 4842 26 24 0021	NW 3rd Ave	B1
Fire Station 61	2121 NW 3rd Ave.	4842 26 45 0010	NW 3rd Ave	B2
Allied Pressroom	251 NW 16th St	4842 26 30 0010	NW 3rd Ave & NW 16th St	B3
Jerome Dry Cleaners	2001 N Dixie Hwy.	4842 26 21 0030	NE 20th, NE 2nd Ter. And NE 5th Ave	B4
Fire Station 24	2001 NW 10th St.	4842 36 28 0010	NE 10th St.	B5



Project Mgr:	LW
Drawn By:	AS
Checked By:	LW
Approved By:	LW

Project No.	H1257D17
Scale:	AS SHOWN
File No.	H1257D17
Date:	12-01-2025

Terracon
Explore with us

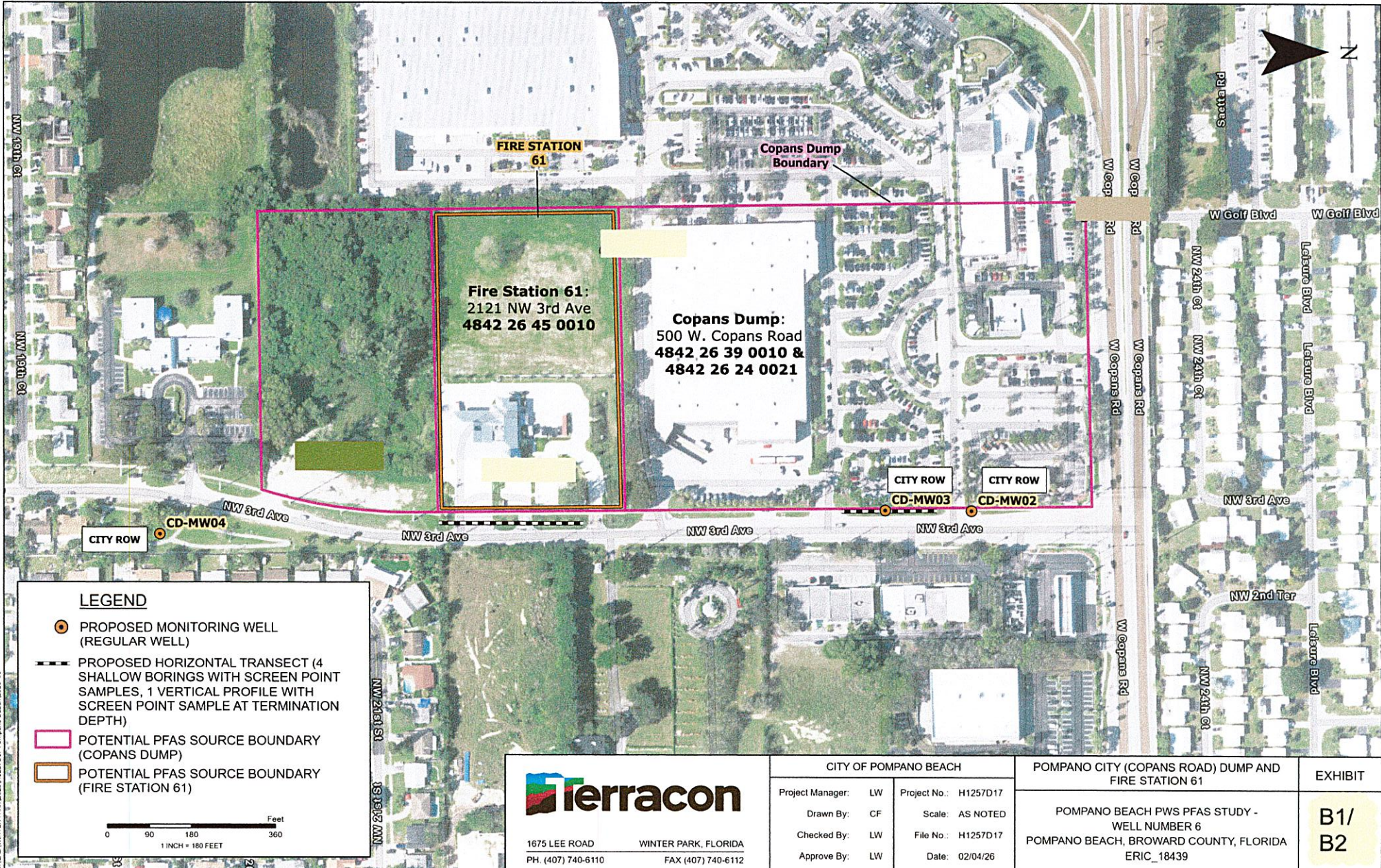
1675 LEE ROAD WINTER PARK, FLORIDA 32789
PH. (407) 740-6110 FAX. (407) 740-6112

PROPOSED MONITORING WELL CONSTRUCTION DETAIL

Pompano Beach PWS No. 6
301 NE 12th Street
Pompano Beach, Broward County, Florida

EXHIBIT

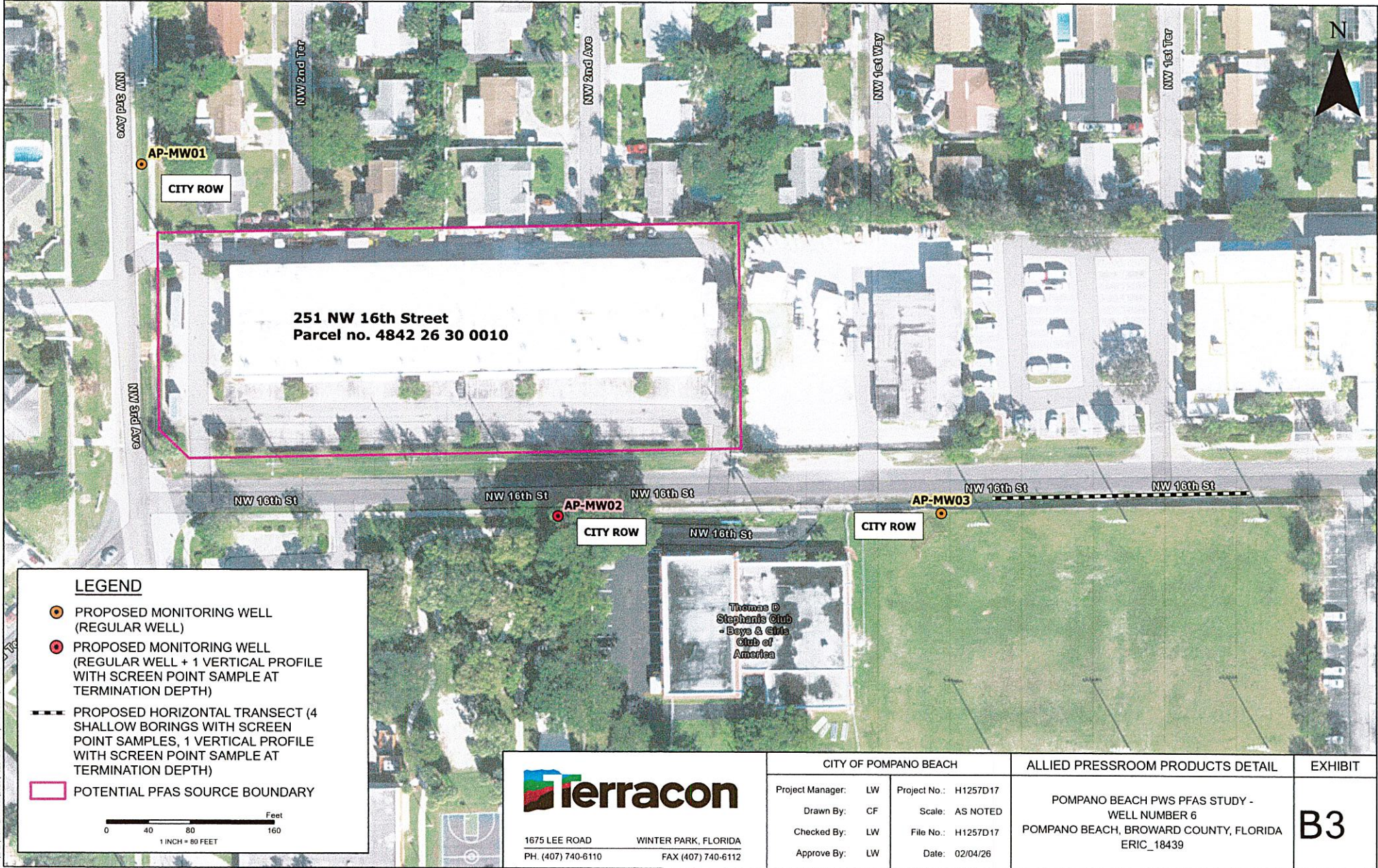
B



1675 LEE ROAD WINTER PARK, FLORIDA
 PH. (407) 740-6110 FAX (407) 740-6112

CITY OF POMPANO BEACH		POMPANO CITY (COPANS ROAD) DUMP AND FIRE STATION 61	EXHIBIT
Project Manager: LW	Project No.: H1257D17	POMPANO BEACH PWS PFAS STUDY - WELL NUMBER 6 POMPANO BEACH, BROWARD COUNTY, FLORIDA ERIC_18439	B1/ B2
Drawn By: CF	Scale: AS NOTED		
Checked By: LW	File No.: H1257D17		
Approve By: LW	Date: 02/04/26		

N:\CAD\WINTER PARK\2025\H1257D17 Pompano Beach\2026-01



LEGEND

- PROPOSED MONITORING WELL (REGULAR WELL)
- PROPOSED MONITORING WELL (REGULAR WELL + 1 VERTICAL PROFILE WITH SCREEN POINT SAMPLE AT TERMINATION DEPTH)
- PROPOSED HORIZONTAL TRANSECT (4 SHALLOW BORINGS WITH SCREEN POINT SAMPLES, 1 VERTICAL PROFILE WITH SCREEN POINT SAMPLE AT TERMINATION DEPTH)
- POTENTIAL PFAS SOURCE BOUNDARY



1675 LEE ROAD WINTER PARK, FLORIDA
 PH. (407) 740-6110 FAX (407) 740-6112

CITY OF POMPANO BEACH

Project Manager: LW
 Drawn By: CF
 Checked By: LW
 Approve By: LW

Project No.: H1257D17
 Scale: AS NOTED
 File No.: H1257D17
 Date: 02/04/26

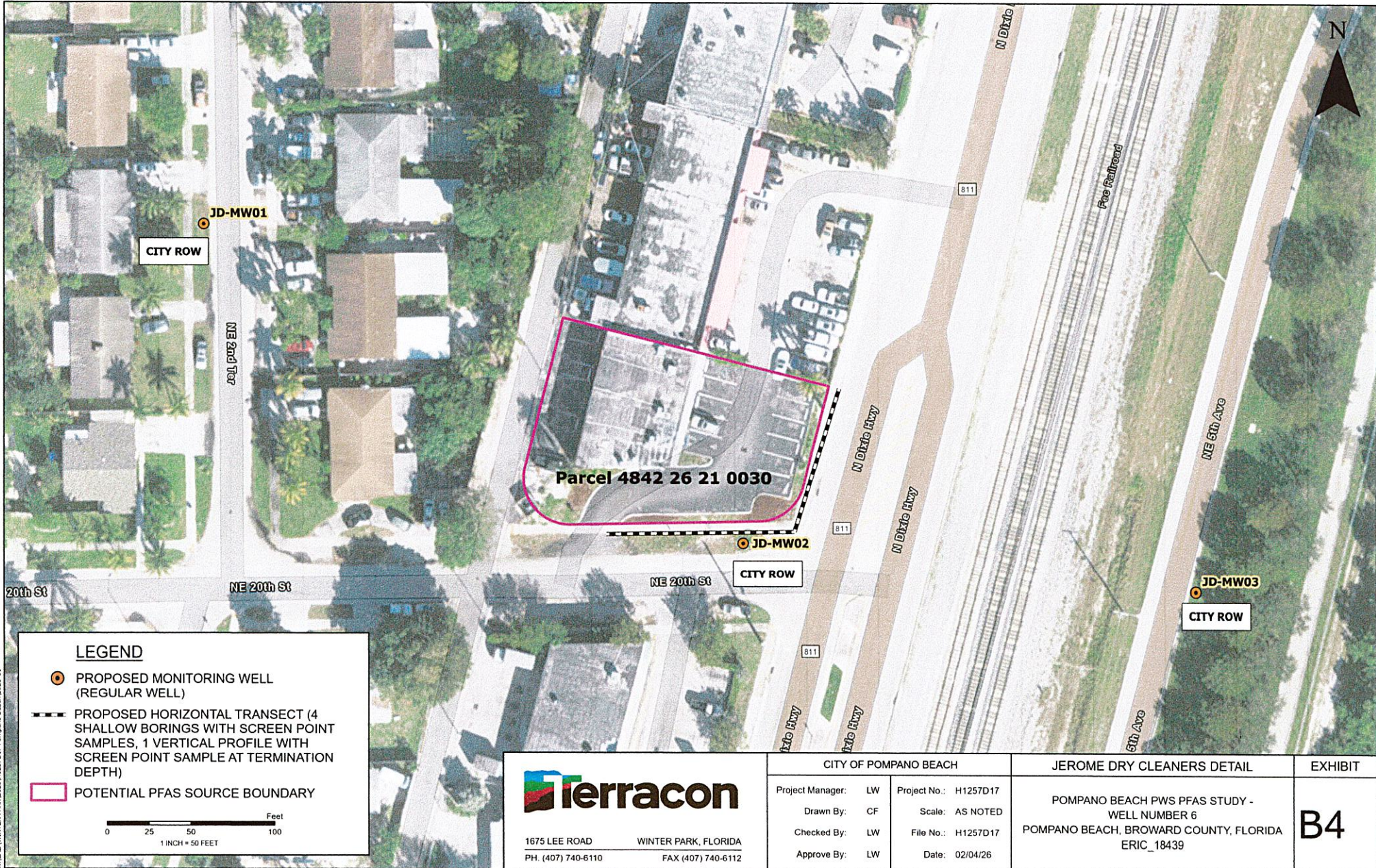
ALLIED PRESSROOM PRODUCTS DETAIL

POMPANO BEACH PWS PFAS STUDY - WELL NUMBER 6
 POMPANO BEACH, BROWARD COUNTY, FLORIDA
 ERIC_18439

EXHIBIT

B3

N:\CAD\WINTER PARK\2025\H1257D17 Pompano Beach\026-01



LEGEND

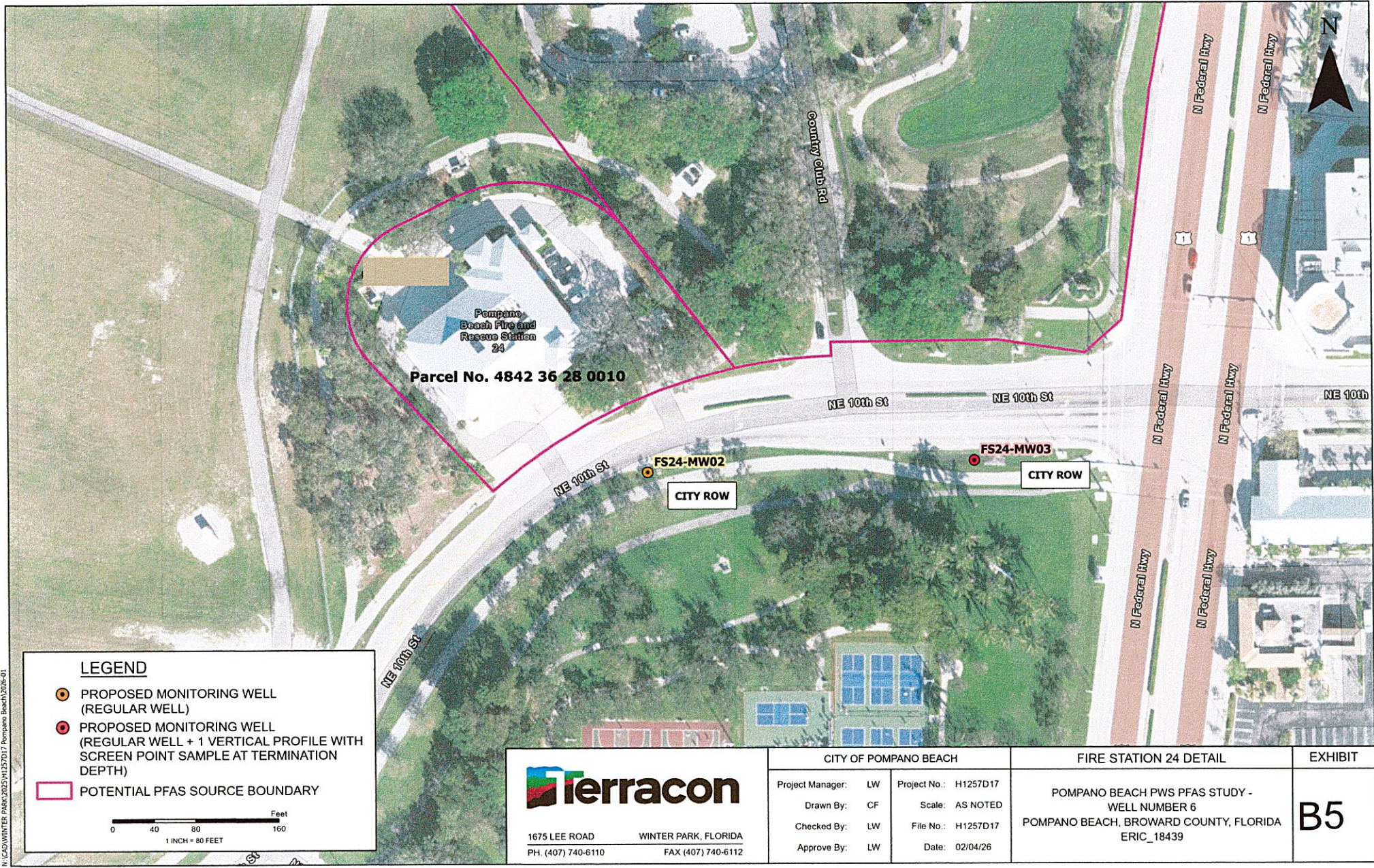
- PROPOSED MONITORING WELL (REGULAR WELL)
- PROPOSED HORIZONTAL TRANSECT (4 SHALLOW BORINGS WITH SCREEN POINT SAMPLES, 1 VERTICAL PROFILE WITH SCREEN POINT SAMPLE AT TERMINATION DEPTH)
- POTENTIAL PFAS SOURCE BOUNDARY



1675 LEE ROAD WINTER PARK, FLORIDA
 PH. (407) 740-6110 FAX (407) 740-6112

CITY OF POMPANO BEACH		JEROME DRY CLEANERS DETAIL	EXHIBIT
Project Manager:	LW	Project No.:	H1257D17
Drawn By:	CF	Scale:	AS NOTED
Checked By:	LW	File No.:	H1257D17
Approve By:	LW	Date:	02/04/26
		POMPANO BEACH PWS PFAS STUDY - WELL NUMBER 6 POMPANO BEACH, BROWARD COUNTY, FLORIDA ERIC_18439	B4

N:\CAD\WINTER PARK\0025\H1257D17 Pompano Beach\026-01



LEGEND

- PROPOSED MONITORING WELL (REGULAR WELL)
- PROPOSED MONITORING WELL (REGULAR WELL + 1 VERTICAL PROFILE WITH SCREEN POINT SAMPLE AT TERMINATION DEPTH)
- POTENTIAL PFAS SOURCE BOUNDARY



1675 LEE ROAD WINTER PARK, FLORIDA
 PH. (407) 740-6110 FAX (407) 740-6112

CITY OF POMPANO BEACH		FIRE STATION 24 DETAIL		EXHIBIT
Project Manager:	LW	Project No.:	H1257D17	B5
Drawn By:	CF	Scale:	AS NOTED	
Checked By:	LW	File No.:	H1257D17	
Approve By:	LW	Date:	02/04/26	
		POMPANO BEACH PWS PFAS STUDY - WELL NUMBER 6 POMPANO BEACH, BROWARD COUNTY, FLORIDA ERIC_18439		

N:\CAD\WINTER PARK\2025\H1257D17 Pompano Beach\2026-01