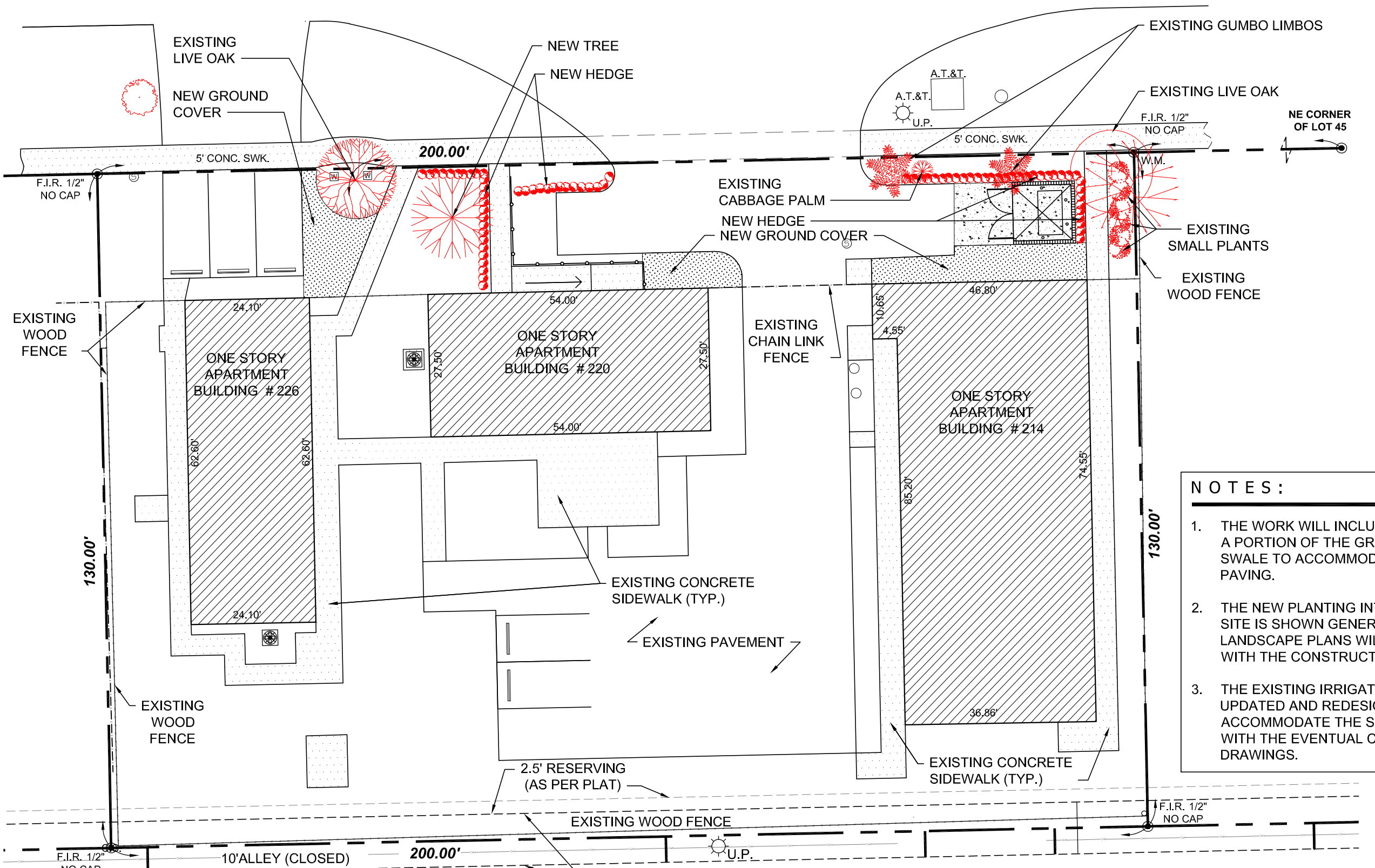


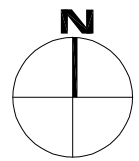
**SW 2ND STREET**

80' TOTAL RIGHT-OF-WAY

22' ASPHALT PAVEMENT



- NOTES:**
1. THE WORK WILL INCLUDE THE REMOVAL OF A PORTION OF THE GREEN AREA IN THE SWALE TO ACCOMMODATE THE NEW PAVING.
  2. THE NEW PLANTING INTENDED FOR THE SITE IS SHOWN GENERICALLY. FULL LANDSCAPE PLANS WILL BE PROVIDED WITH THE CONSTRUCTION DRAWINGS.
  3. THE EXISTING IRRIGATION SYSTEM WILL UPDATED AND REDESIGNED TO ACCOMMODATE THE SITE MODIFICATIONS WITH THE EVENTUAL CONSTRUCTION DRAWINGS.



Scale: 1" = 20'-0"