

**SECTION NO(S): 860200000**  
**S.R. NO.(S): 5**  
**COUNTY: Broward**  
**PERMIT NO.: 2018-A-491-002**

**DISTRICT FOUR (4) AMENDMENT NUMBER TWENTY-ONE (21) TO STATE OF FLORIDA DEPARTMENT OF TRANSPORTATION INCLUSIVE LANDSCAPE MAINTENANCE MEMORANDUM OF AGREEMENT**

This is Amendment Number Twenty-One (21) to the Agreement dated December 5, 2007, made and entered into this \_\_\_\_\_ day of \_\_\_\_\_ 20\_\_\_\_ by and between the State of Florida Department of Transportation hereinafter called the “**DEPARTMENT**” and the **CITY OF POMPANO BEACH**, a municipal corporation of the State of Florida, hereinafter called the “**AGENCY**”.

WHEREAS, the parties entered into the Inclusive Landscape Maintenance Memorandum of Agreement dated December 5, 2007 for the purpose of maintaining the landscape improvements by the AGENCY on various State Road(s) including State Road 5 (US 1); and

WHEREAS, the DEPARTMENT and the AGENCY have agreed to add additional landscape improvements to be installed on State Road % (US 1) in accordance with the above referenced Agreement; and

NOW THEREFORE, for and in consideration of mutual benefits that flow each to the other, the parties covenant and agree as follows:

1. Pursuant to paragraph 1, page 1 of the Amendment Number Six (6) Landscape Inclusive Maintenance Memorandum of Agreement dated August 9, 2013, the DEPARTMENT will allow an adjacent property owner to construct additional landscape improvements or to modify and improvement located as indicated in **Exhibit “A”**, State Road 5 (US 1) from M.P. 10.969 to M.P. 11.025, in accordance with the plans attached as **Exhibit “B”**.
2. Pursuant to page 11 of the original Agreement dated December 5, 2007, the AGENCY shall agree to modify the limits to include State Road 5 (US 1) from M.P. 7.262 (South of McNab Road) to M.P. 11.025.
3. The AGENCY shall agree to maintain the additional hardscape improvements in the Agreement described above according to **Exhibit “F”** Maintenance Plan, of the original agreement, and as follows:

**PART I. GENERAL MAINTENANCE REQUIREMENTS AND RECOMMENDATIONS:**

The purpose of a plan for the hardscape improvements maintenance practices is to allow for safe access to the site. Improvements shall be maintained to avoid potential roadway hazards and to provide required accessibility, as set forth by Florida

Department of Transportation (FDOT) governing standards and specifications: *FDOT Standard Plans*, *FDOT Plans Design Manual* and *FDOT Standard Specifications for Road and Bridge Construction*, as amended by contract documents, and all other requirements set forth by the District 4 Operations Maintenance Engineer. The initial portion of the Maintenance Plan. The initial portion of the Maintenance Plan **Section Part I.** describes general maintenance requirements and recommendations.

### **HARDSCAPE (CONCRETE PAVERS)**

All concrete pavers shall be maintained in such a manner as to prevent any potential tripping hazards and protect damage to the pavers. Final surface tolerance from grade elevations shall, at a minimum, meet the most current *Interlocking Concrete Pavement Institute (ICPI), Guide Specifications for Pavers on an Aggregate Base, Section 23 14 13 Interlocking Concrete Pavers*, Part 3.05. If the specialty surfacing become damaged, they shall be replaced with the same type and specification as the approved plan.

It shall be the responsibility of the AGENCY to maintain all signs located within a non-standard surfacing area. Such maintenance to be provided by the AGENCY shall include repair and replacement of the sign panel, post, and base.

### **MAINTENANCE OF TRAFFIC CONTROL**

MOT during routine maintenance shall comply with FDOT Index 102-611 and 102-612 (enclosed).

## **PART II. SPECIFIC PROJECT SITE MAINTENANCE REQUIREMENTS AND RECOMMENDATIONS**

Concrete pavers shall be inspected twice yearly for the aesthetic appearance and safety conditions and address any issues occurring by repairing or replacing in those specific locations.

To maintain the overall aesthetic appearance and safety of the concrete pavers they shall be cleaned twice yearly to prevent mold, dirt, oil, and gum build up.

Joints and cracks in concrete, concrete pavers, concrete curbs, and expansion joints shall be inspected twice yearly to keep those areas free of weeds.

Except as modified by this Amendment, all terms and conditions of the AGREEMENT shall remain in full force and effect.

### **LIST OF EXHIBITS**

- Exhibit A - Hardscape Improvements Maintenance Boundaries
- Exhibit B – Hardscape Improvement Plan

**In Witness whereof**, the parties hereto have executed with this Amendment effective the \_\_\_\_\_day \_\_\_\_\_year written and approved.

CITY OF POMPANO BEACH

By: \_\_\_\_\_  
Chairperson/Mayor/Manager

Attest: \_\_\_\_\_(SEAL)  
Clerk

Legal Review \_\_\_\_\_ Date \_\_\_\_\_  
\_\_\_\_\_

STATE OF FLORIDA  
DEPARTMENT OF TRANSPORTATION

By: \_\_\_\_\_  
Transportation Development Director

Attest: \_\_\_\_\_  
Executive Secretary

Legal Review \_\_\_\_\_ Date \_\_\_\_\_  
\_\_\_\_\_

\_\_\_\_\_  
Office of the General Counsel

**SECTION NO(S): 860200000**  
**S.R. NO.(S): 5**  
**COUNTY: Broward**  
**PERMIT NO.: 2018-A-491-002**

**EXHIBIT A**

**HARDSCAPE IMPROVEMENTS  
MAINTENANCE BOUNDARIES**

- I. PERMIT PROJECT HARDSCAPE IMPROVEMENTS MAINTENANCE LIMITS:  
State Road 5 (US 1) from M.P. 10.969 to M.P. 11.025
- II. ORIGINAL INCLUSIVE LANDSCAPE MAINTENANCE AGREEMENT LIMITS FOR STATE ROAD 5 (US 1):  
State Road 5 (US 1) from M.P. 7.72 (South of McNab Road) to 10.825 (North of 24<sup>th</sup> Street
- III. MODIFIED INCLUSIVE LANDSCAPE MAINTENANCE AGREEMENT LIMIST FOR STATE ROAD 5 (US 1)
- IV. HARDSCAPE IMPROVEMENTS MAINTENANCE BOUNDARY LIMITS MAP:

*Please See Attached*



**SPS**  
 SPECIALIZED PLANNING & DESIGN  
 301 East Atlantic Boulevard  
 Pompano Beach, Florida 33064  
 (954) 789-3400 FAX (954) 789-5500  
 STATE OF FLORIDA CERTIFIED  
 PROFESSIONAL ENGINEER  
 AUTHORIZATION NUMBER - 7928

**K&H**  
 CONSULTANTS  
 2699 NORTH FEDERAL HIGHWAY  
 POMPANO BEACH, FL 33064  
 CLIENT: CITY OF POMPANO BEACH

DESIGN DELIVERABLE: PERMIT SUBMITTAL  
 ISSUE DATE: 07/14/2017  
 PROJECT NUMBER: 0020-16  
 DRAWN BY: PW  
 CHECKED BY: MG  
 DATE PLOTTED: 02/08/2021 10:09:05 AM  
 PLOT TITLE: LANDSCAPE IMPROVEMENTS MAINTENANCE BOUNDARY MAP

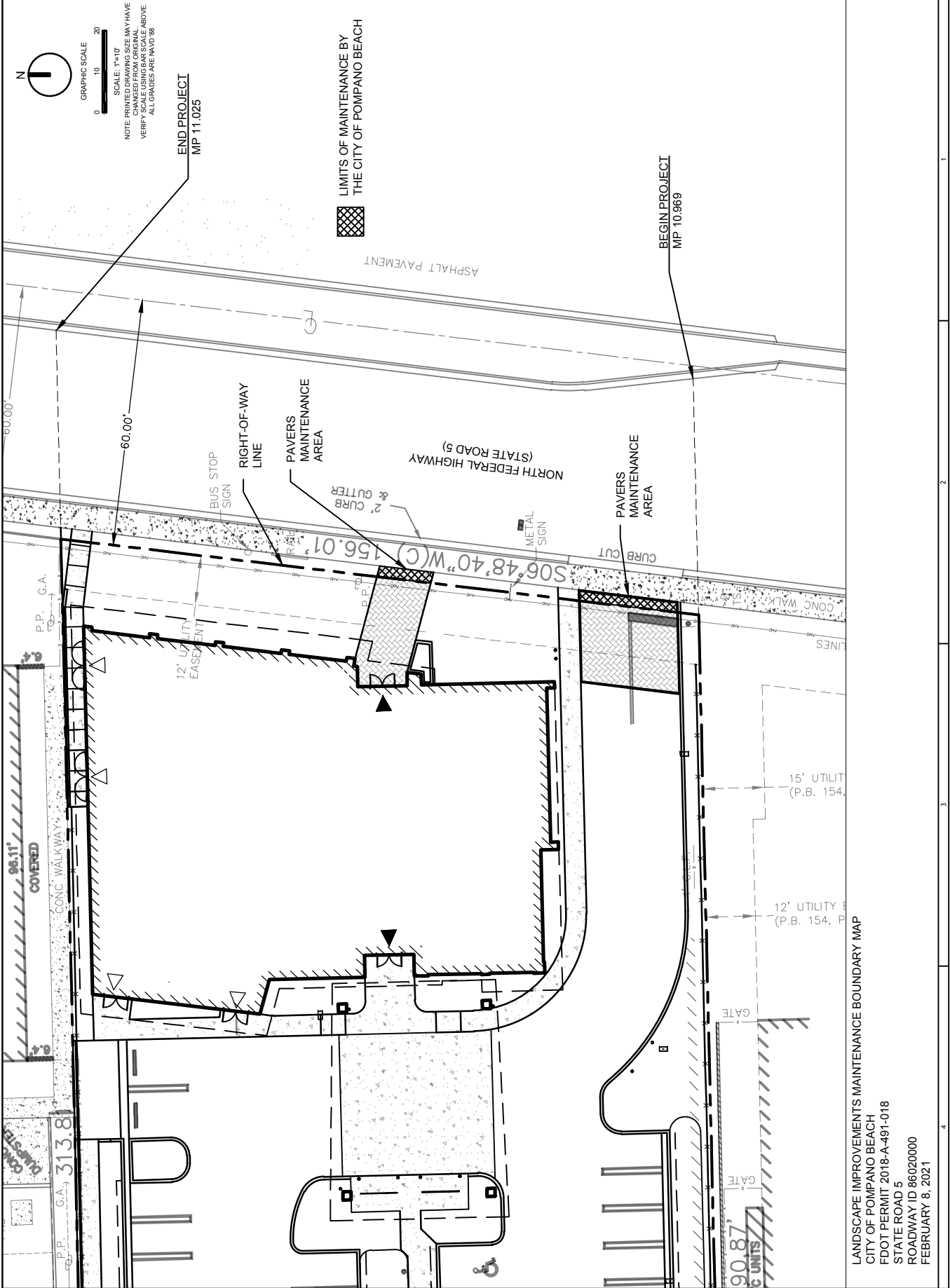
SCALE: 1"=10'  
 NOTE: PRINTED DRAWING SIZE MAY HAVE  
 CHANGED FROM ORIGINAL.  
 VERIFY SCALE USING BAR SCALE ABOVE.  
 ALL GRADES ARE 1/4"=1.00'

GRAPHIC SCALE  
 0 10 20

END PROJECT  
 MP 11.025

LIMITS OF MAINTENANCE BY  
 THE CITY OF POMPANO BEACH

BEGIN PROJECT  
 MP 10.969



LANDSCAPE IMPROVEMENTS MAINTENANCE BOUNDARY MAP  
 CITY OF POMPANO BEACH  
 FDOT PERMIT 2018-A-491-018  
 STATE ROAD 5  
 ROADWAY ID 86020000  
 FEBRUARY 8, 2021

MP 11.025

MP 10.969

MP 11.025

MP 10.969

MP 11.025

MP 10.969

MP 11.025

MP 10.969

MP 11.025

MP 10.969

MP 11.025

MP 10.969

MP 11.025

MP 10.969

MP 11.025

MP 10.969

MP 11.025

MP 10.969

MP 11.025

MP 10.969

MP 11.025

MP 10.969

MP 11.025

MP 10.969

MP 11.025

MP 10.969

MP 11.025

MP 10.969

MP 11.025

MP 10.969

MP 11.025

MP 10.969

MP 11.025

MP 10.969

MP 11.025

MP 10.969

MP 11.025

MP 10.969

MP 11.025

MP 10.969

MP 11.025

MP 10.969

MP 11.025

MP 10.969

MP 11.025

MP 10.969

MP 11.025

MP 10.969

MP 11.025

MP 10.969

MP 11.025

MP 10.969

MP 11.025

MP 10.969

MP 11.025

MP 10.969

MP 11.025

MP 10.969

MP 11.025

MP 10.969

**SECTION NO(S): 860200000**  
**S.R. NO.(S): 5**  
**COUNTY: Broward**  
**PERMIT NO.: 2018-A-491-002**

**EXHIBIT B**

**HARDSCAPE IMPROVEMENT PLANS**

The AGENCY agrees to install the hardscape improvements in accordance with the plans and specifications attached hereto and incorporated herein.

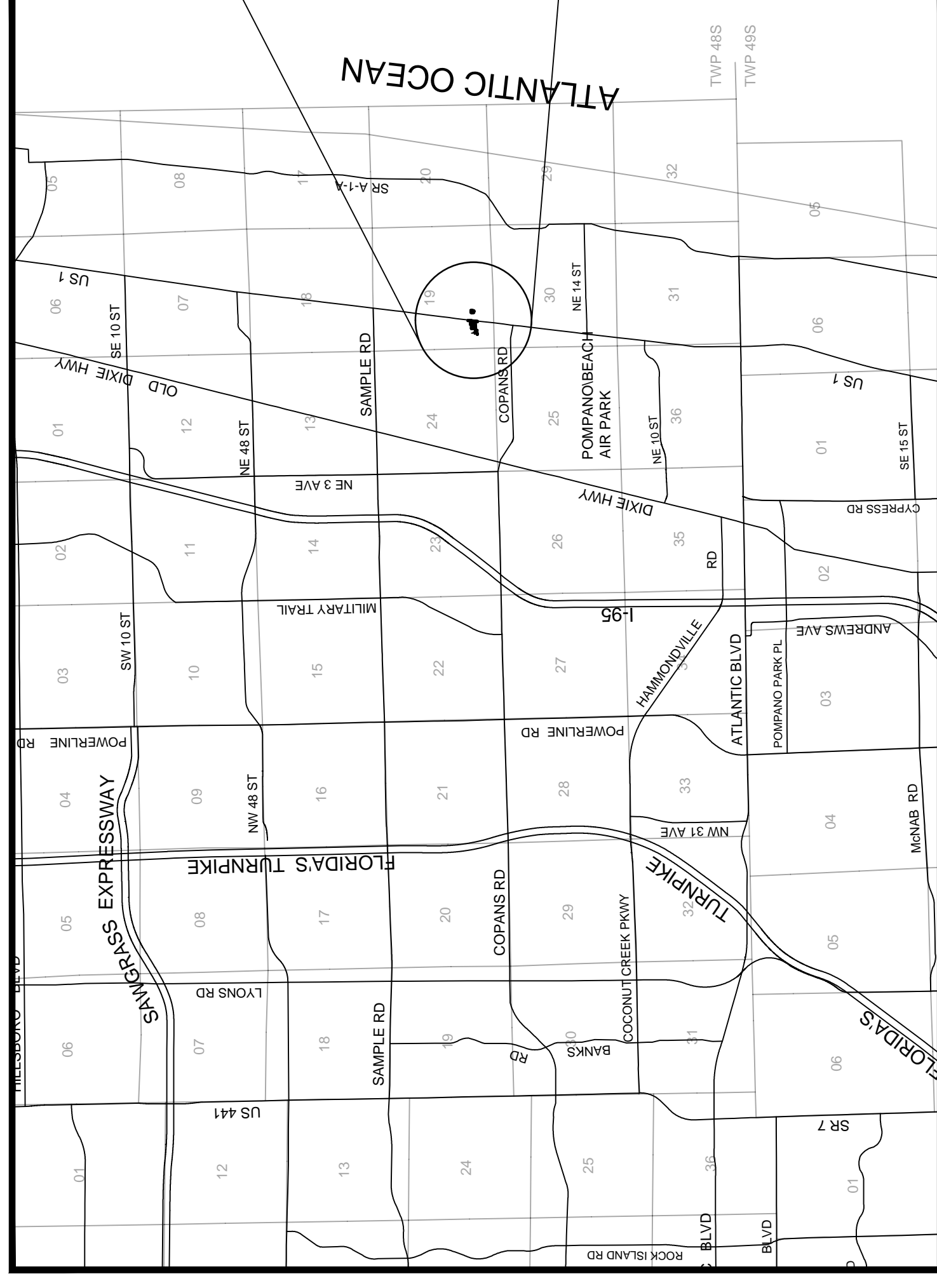
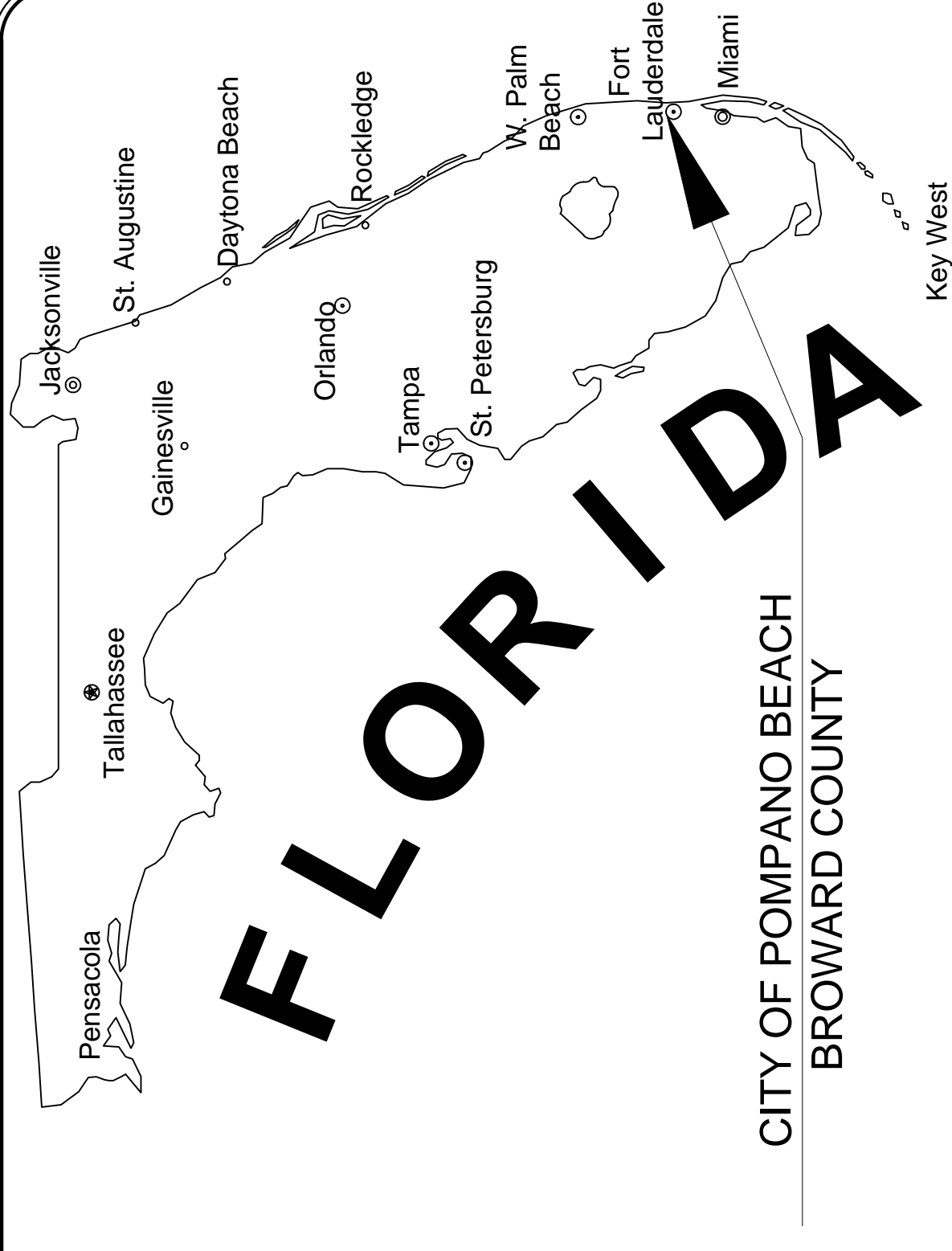
Please see attached plans prepared by:

Stephen D. Williams, P.E.  
KEITH & Associates

Date: January 3, 2018

# FINAL CONSTRUCTION PLANS FOR CHARLOTTE J. BURRIE CIVIC CENTER

CITY OF POMPANO BEACH, BROWARD COUNTY, FLORIDA



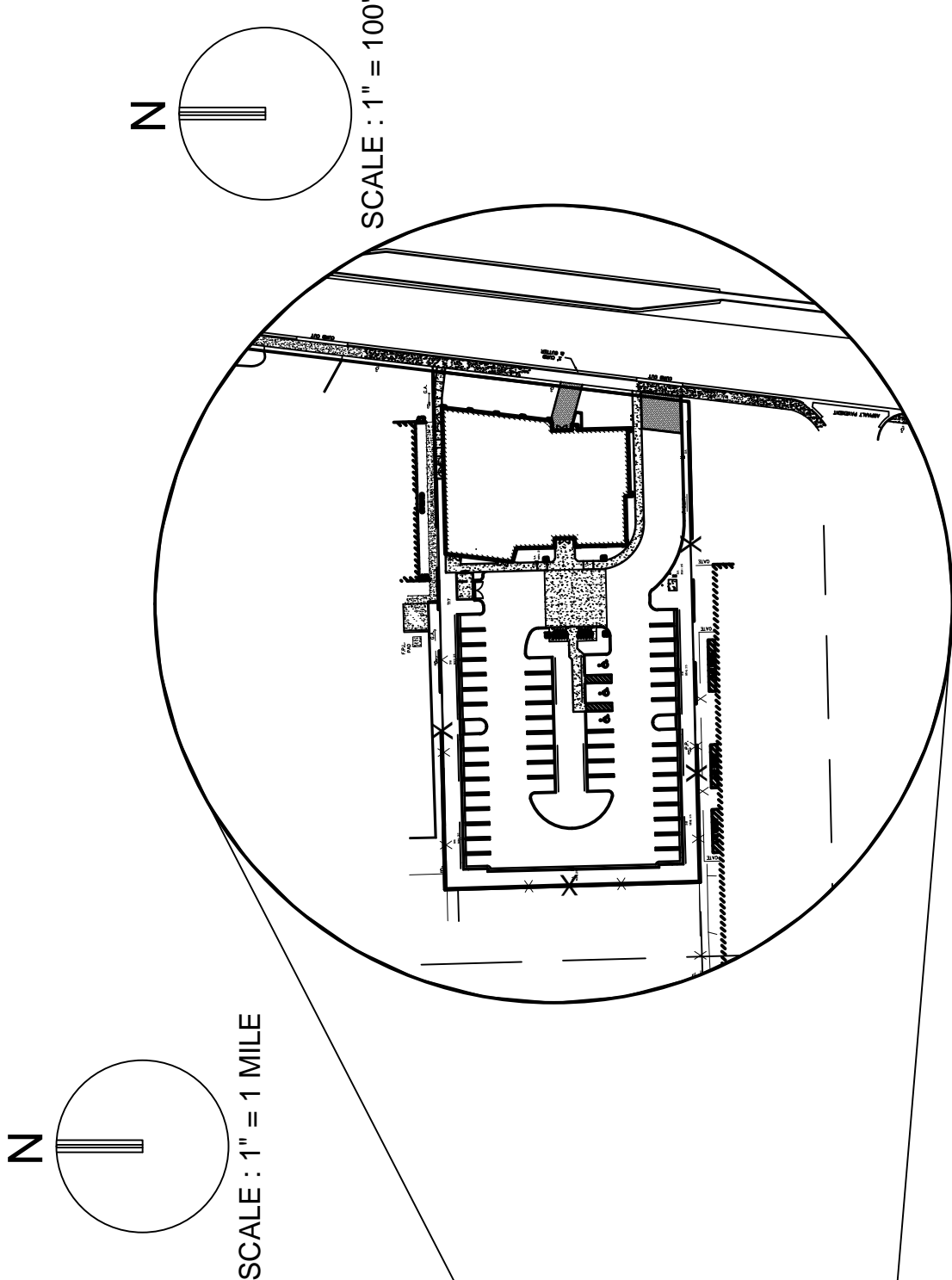
VICINITY MAP  
S 19, T 48 S, R 43 E

LAND DESCRIPTION  
PARCEL "A" OF "M.W.S. PLAT", ACCORDING TO THE PLAT THEREOF, AS RECORDED IN PLAT BOOK 91, AT PAGE 43 OF THE PUBLIC RECORDS OF BROWARD COUNTY, FLORIDA.

WWS APPROVAL OF THIS SET OF DRAWINGS IS RELIANT UPON THE DRAWINGS CLEARLY SHOWING ALL EXISTING AND PROPOSED ABOVE GROUND STRUCTURES, ASPHALT, PAVING, LANDSCAPING, WALLS, FENCES, UNDERGROUND PIPING, UNDERGROUND STRUCTURES, DUCT BANKS, TRANSFORMERS, POLES, STORM WATER STORAGE AREAS, PAVERS, ELECTRIC CABLE, AND OTHER UTILITY FACILITIES WITHIN RIGHTS OF WAY AND EXISTING AND PROPOSED POTABLE WATER / RECLAIMED WATER / WASTEWATER EASEMENTS. WWS HEREBY AUTHORIZES ONLY THE ITEMS SHOWN ON THESE DRAWINGS TO BE WITHIN SAID POTABLE WATER / RECLAIMED WATER / WASTEWATER EASEMENTS.



THESE PLANS MAY HAVE BEEN REDUCED IN SIZE BY REPRODUCTION. THIS MUST BE CONSIDERED WHEN OBTAINING SCALED DATA.



2669 N. FEDERAL HIGHWAY  
POMPANO BEACH, FL 33064

WATER ERU TALLY				ERU REF. CODE
TYPE OF USE	UNIT OF MEASURE	NUMBER OF UNITS	ERUS PER UNIT	
OFFICE	1,000 SF	8.712	0.212	C12
IRRIGATION	1,000 SF	12.200	0.439 (W/ CREDIT)	I02
SEWER ERU TALLY				ERU REF. CODE
TYPE OF USE	UNIT OF MEASURE	NUMBER OF UNITS	ERUS PER UNIT	
OFFICE	1,000 SF	8.712	0.212	C12
IRRIGATION	1,000 SF	12.200	0.439 (W/ CREDIT)	I02

WATER METER TALLY			REQUIRED QUANTITY
METER DESCRIPTION	METER SIZE	NUMBER OF UNITS	
COMBINED DOMESTIC WATER AND FIRE	6"	1	1
IRRIGATION	2"	1	1

PREPARED FOR:  
SYNALOVSKI ROMANIK SAYE  
1800 ELLER DRIVE, SUITE 500  
FT. LAUDERDALE, FL 33316

Sheet Sequence No.	Sheet Identification	Sheet Title
1	GH-000	COVER
2	GI-001	LEGEND
3	GI-002	CONSTRUCTION SPECIFICATIONS
4	GI-003	GENERAL NOTES
5	CG-101	STORM WATER POLLUTION PREVENTION PLAN
6	CG-501	STORM WATER POLLUTION PREVENTION DETAILS
7	CD-101	DEMOLITION PLAN
8	CP-101	PAVING, GRADING AND DRAINAGE PLAN
9 - 11	CP-501 - CP-503	PAVING, GRADING AND DRAINAGE DETAILS
12	GU-101	WATER AND SEWER PLAN
13 - 15	GU-501 - GU-503	WATER AND SEWER DETAILS
16	CM-101	PAVEMENT MARKING AND SIGNAGE PLAN
17	CM-501	PAVEMENT MARKING AND SIGNAGE DETAILS

THE VERTICAL DATUM USED FOR THESE DRAWINGS WAS NAVD 88

ELEV.	DIFFERENCE	DATUM
1.55'	+1.55 FEET	NGVD 1929
0.00'		NAVD 1988

RELATIONSHIP BETWEEN  
NGVD 1929 AND NAVD 1988

FEMA FLOOD ZONE:

THE PROPERTY IS LOCATED WITHIN A FLOOD ZONE X,  
AS SHOWN ON F.I.R.M. NO. 12011C0188H,  
BEARING A MAP EFFECTIVE DATE OF AUGUST 18, 2014

CONSTRUCTION AND MATERIALS SHALL BE IN ACCORDANCE WITH WATER AND WASTEWATER SERVICES MINIMUM DESIGN AND CONSTRUCTION STANDARDS. PLANS ARE IN ACCORDANCE WITH WWS MINIMUM DRAWING REQUIREMENTS DATED JANUARY 19, 2013.



State of Florida Certificate of  
Authorization Number - 7928

PROJECT No. 07020.16 03/30/2016

General Symbols		Description
	Centerline & Baseline of Survey or Construction	
	Building Access (ADA)	
	Building Access (NON-ADA)	
	Driveway Turnout Identification (Per FDOT Index 515) w/ Drive Width	
	Sidewalk Curb Ramp (Per FDOT Index 304)	
	Proposed Section Marker	
	Flag Pole	
	GPS Point	
	Hay Bales	
	Mail Box	
	Major Contour Elevation	
	Minor Contour Elevation	
	Parking Meter	
	Property Line	
	Grade Elevation	
	Top Of Curb Elevation/Pavement Elevation	
	Soil Test Boring Hole	
	Survey Bench Mark	
	County Bound	
	Demolition Line	
	Easement Line	
	Property Line	
	Limited Access Line/Non-Vehicular Access	
	Railroad	
	Right Of Way	
	Canal Or Drainage Ditch	
	Shore Line	
	Tree Line	
	Aerial Communication Line	
	Underground Communication Line	
	Underground Storm Drain Line (Double Line 24" And Over)	
	Underground Sanitary Line	
	Aerial Electric Line	
	Underground Electric	
	Underground Water Line	
	Underground Force Main	
	Gate	
	Chain Link Fence	
	Wood Fence	
	Metal Rail Fence	
	Silt Fence	
	Staked Turbidity Barrier	
	Turbidity Barrier	
	Guard Rail	
	Roadway Centerline	
	2 - 4 Skip	
	3 - 9 Skip	
	6 - 10 Skip	
	10 - 30 Skip	
	10 - 10 - 20 Skip	
	Curb	
	Curb And Gutter	
Landscaping		Description
	Bush	
	Tree	
	Palm Tree	

Paving and Grading		Description
	Flow Directional Arrow	
	Pavement Marking Arrows	
	Stop Bar	
	Concrete Sidewalk	
	Jogging Path	
	Pavement Area	
	Existing Pavement/Concrete/ Landscape Removal Area	
	Milling And Resurfacing	
	Detectable Warning (Truncated Domes) Per Florida Accessibility Code	
	Soil Tracking Prevention Device	
Drainage / Utilities		Description
	Catch Basin	
	Yard Drain	
	Exfiltration Trench	
	Catch Basin With Filter Fabric Insert	
	Curb Type 5	
	Curb Type 6	
	Pipe Culvert - Mitered End Section	
	Pipe Culvert - Straight Endwall	
	Pipe Culvert - U - Type Endwall	
	Manhole - Communication, Electric, Gas, Dn, San Sew	
	Valve Box - Gas, San. Sew. Water, Non-Potable Water	
	22.5 degree Bend	
	45 degree Bend	
	90 degree Bend	
	Utility Crossing	
	Fire Hydrant	
	Proposed Bacteriological Sampling Point	
	Pump Station	
	Grease Trap	
	Septic Tank	
	Drainage Well	
	Monitoring Well	
	Water Well	
	Sanitary Sewer Cleanout	
	Back Flow Preventor	
	Junction Box	
	Electric Handhole	
	Electric Meter	
	Water Meter	
	Gate Valve	
	Guy wire	
	Light Pole	
	Relocated Or Adjusted Light Pole	
	Wood Power Pole	
	Concrete Utility Pole	
	Traffic Signal Pole (Concrete, Wood, Metal)	
	Pedestrian Signal Head (Pole Or Pedestal Mounted)	
	Post Mounted Sign	
	Street Sign	
	High Mast Lighting Tower	
	Controller Cabinet (Base Mounted)	
	Controller Cabinet (Pole Mounted)	
	Traffic Signal Head (Span Wire Mounted)	
	Traffic Signal Head (Pedestal Mounted)	
	Traffic Signal Head (Mast Arm Mounted)	
Coordinate values shown on proposed improvements are relative to the coordinate values indicated on the Right-of-Way, property corners or reference monument		
N: 623025.4322	E: 850262.1786	

General	Abbreviations	Abbreviations Continued
AADT	Annual Average Daily Traffic	PI
ABAN	Abandon	POT
ADJ	Adjust	Point On Curve
APPROX.	Approximate	Point On Tangent
A.C.	Asphalt Concrete	Point Of Reverse Curvature
ACCM PIPE	Asphalt Coated Corrugated Metal Pipe	Project
BIT.	Bituminous	Proposed
BC	Back Of Curb	Point Of Tangency
BD.	Bound	Point Of Vertical Curvature
BL	Baseline	Point Of Vertical Intersection
BLDG	Building	Point Of Vertical Tangency
BM	Benchmark	paved Water-Way
BO	By Others	Radius Of Curvature
BOS	Bottom Of Slope	Remove And Dispose
BR.	Bridge	Reinforced Concrete Pipe
CAP	Corrugated Aluminum Pipe	Road
CB	Catch Basin	Roadway
CBCI	Catch Basin With Curb Inlet	Remove
CC	Cement Concrete	Retain
CCM	Cement Concrete Masonry	Retaining Wall
CEM	Cement	Right Of Way
CI	Cast Iron Pipe	Railroad
CIP	Chain Link Fence	Remove And Reset
CLF	Centerline	Right
CL	Corrugated Metal Pipe	Shoulder
CMP	County	Sewer Manhole
CO.	Concrete	Street
CONC	Continuous	Station
CONT	Construction	Stopping Sight Distance
CONST	Construction	Sidewalk
CR GR	Crown Grade	Tangent Distance Of Curve/Truck %
DHV	Design Hourly Volume	Tangent
DI	Drop Inlet	Temporary
DIA	Diameter	Top Of Curb
DIP	Ductile Iron Pipe	Top Of Slope
DWY	Driveway	Typical
ELEV (OR EL.)	Elevation	Utility Pole
EMB	Embankment	Varies
EOP	Edge Of Pavement	VERT
EXIST (OR EX)	Existing	VERT
EXC	Excavation	Vertical Curve
F&C	Frame And Cover	Wheel Chair Ramp
F&G	Frame And Grate	WIP
FDN.	Foundation	WM
FLDSTN	Fieldstone	Water Meter/Water Main
GAR	Garage	X-SECT
GD	Ground	
GI	Gutter Inlet	
GIP	Galvanized Iron Pipe	
GRAN	Granite	
GRAV	Gravel	
GRD	Guard	
GV	Gate Valve	
HDW	Headwall	
HMA	Hot Mix Asphalt	
HOR	Horizontal	
HYD	Hydrant	
INV	Invert	
JCT	Junction	
L	Length Of Curve	
LB	Leach Basin	
LP	Light Pole	
LT	Left	
MAX	Maximum	
MB	Mailbox	
MH	Manhole	
MIN	Minimum	
NO.	Not In Contract	
PC	Point Of Curvature	
PCC	Point Of Compound Curvature	
P.G.L.	Profile Grade Line	

**SYNALOVSKI ROMANIKS GAY**  
Professional Surveying & Engineering

1800 Bler Drive, Suite 500  
Fort Lauderdale, FL 33316  
T 954.961.6866  
F 954.961.6807  
www.srsync.com

**KEITH ASSOCIATES**  
Consulting Engineers

301 East Atlantic Boulevard  
Pompano Beach, Florida 33060-6643  
(954) 788-3400, FAX (954) 788-3500  
State of Florida Certificate of Authorization Number - 7928

STEPHERD WILLIAMS P.E.  
FLORIDA REG. NO. 30260  
(FOR THE FIRM)

**CHARLOTTE J. BURRIE**  
CIVIC CENTER  
6699 NORTH FEDERAL HIGHWAY  
POMPANO BEACH, FL 33064  
CLIENT: CITY OF POMPAHO BEACH

DESIGN DELIVERABLE: PERMIT SUBMITTAL  
ISSUE DATE: 07/14/2017

PROJECT NUMBER: 07020.16  
DRAWN BY: PW  
CHECKED BY: MG

Copyright © by SYNALOVSKI ROMANIKS GAY  
All Rights Reserved.  
SHEET TITLE:

**LEGEND**

SHEET NUMBER: **GI-001**









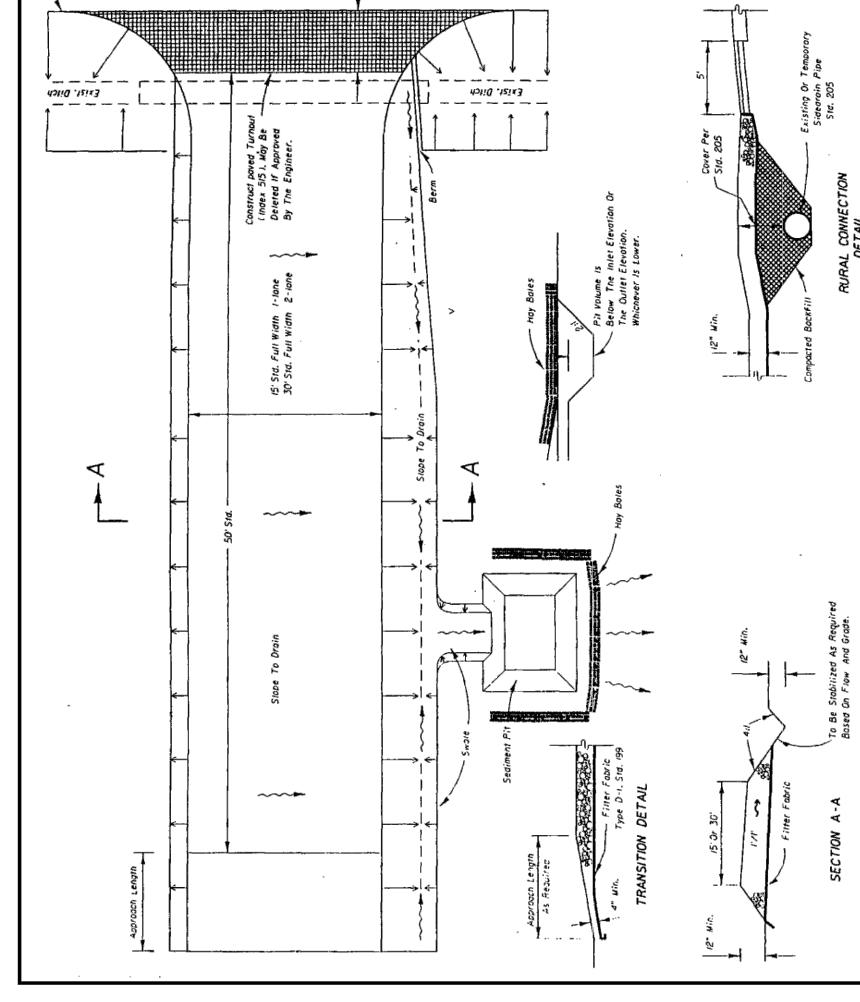


FIGURE 4.3b. SOIL TRACKING PREVENTION DEVICE  
SOURCE: FLORIDA STORMWATER EROSION AND SEDIMENTATION CONTROL INSPECTOR'S MANUAL

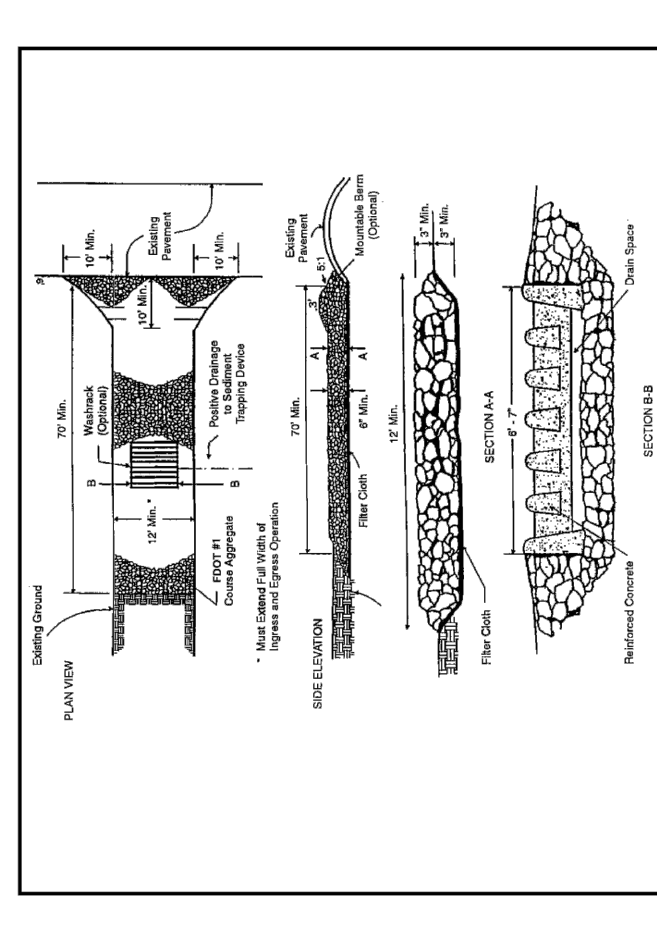


FIGURE 4.3c. CONSTRUCTION ENTRANCE WITH WASH ROCK  
SOURCE: FLORIDA STORMWATER EROSION AND SEDIMENTATION CONTROL INSPECTOR'S MANUAL

The entrance should be located to provide for maximum utility by all construction vehicles.

**Construction Specifications**  
The entrance area should be cleared of all vegetation, roots, and other objectionable material. A geotextile should be laid down to improve stability and simplify maintenance when gravel is used. The gravel shall then be placed over the geotextile to the specified dimensions.



**Maintenance**

The stabilized construction exit shall be maintained in a condition that will prevent the tracking or flow of mud onto public rights of way. This may require periodic maintenance as conditions demand, and the repair and/or cleanup of any structures used to trap sediments. Sediments should be removed from the entrance area as needed. Tracked sediments on roadways or into storm drains must be removed immediately. Look for signs of trucks and trailer equipment "cutting corners" where the construction exit meets the roadway. Sweep the paved road as needed.

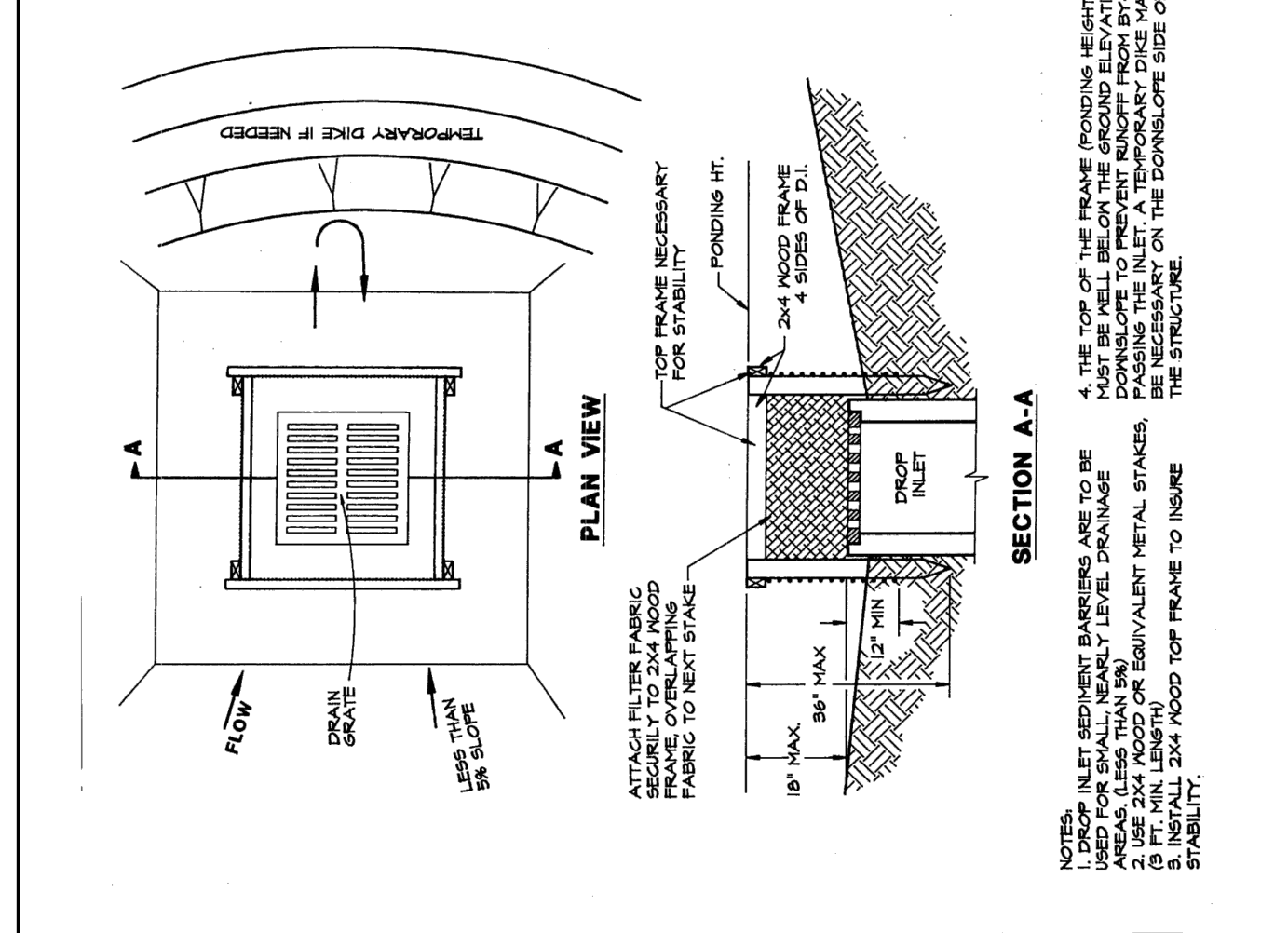


FIGURE 4.5a. SILT FENCE DROP INLET SEDIMENT FILTER  
SOURCE: FLORIDA STORMWATER EROSION AND SEDIMENTATION CONTROL INSPECTOR'S MANUAL

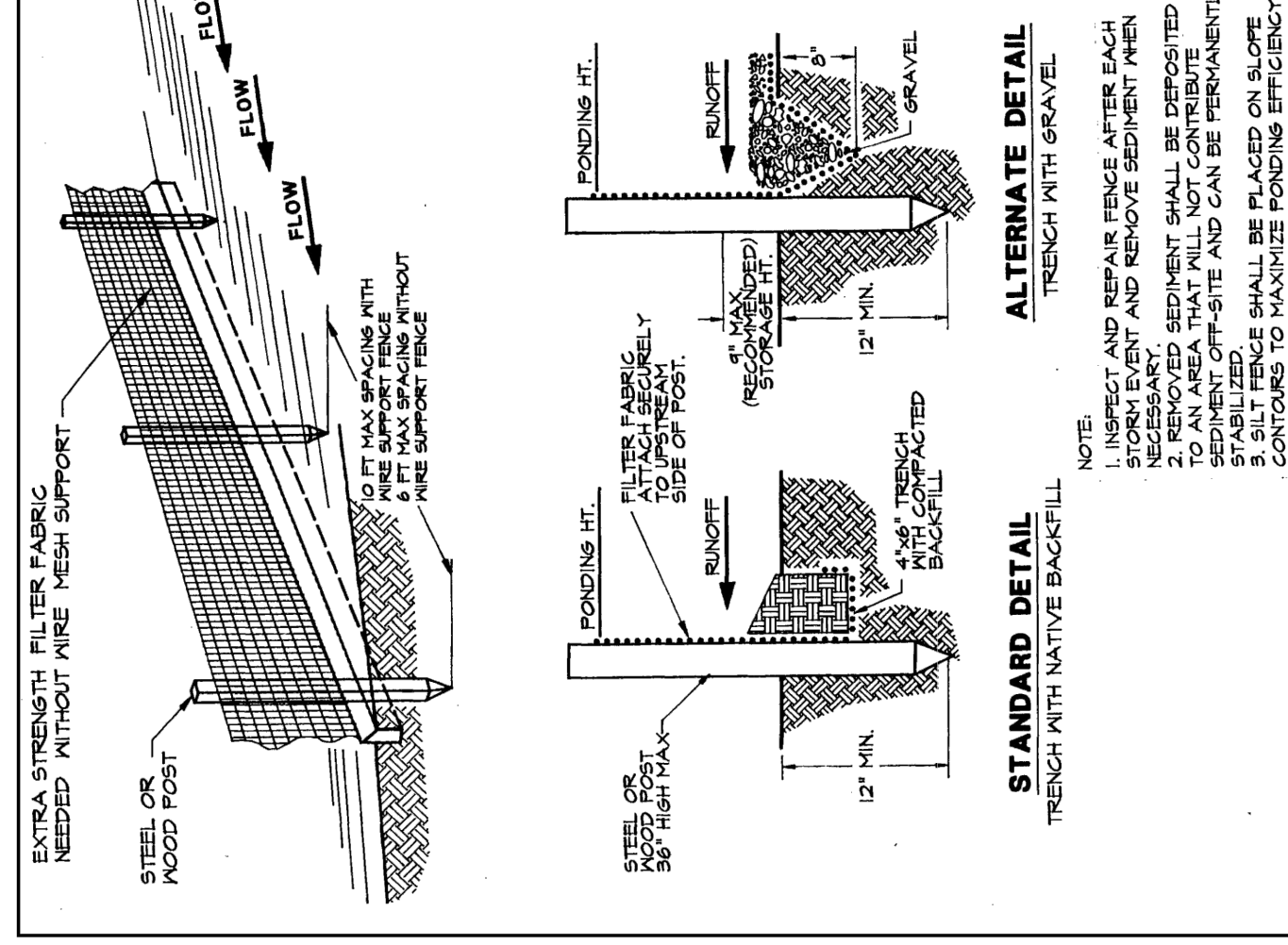


FIGURE 4.4a. SILT FENCE  
SOURCE: FLORIDA STORMWATER EROSION AND SEDIMENTATION CONTROL INSPECTOR'S MANUAL

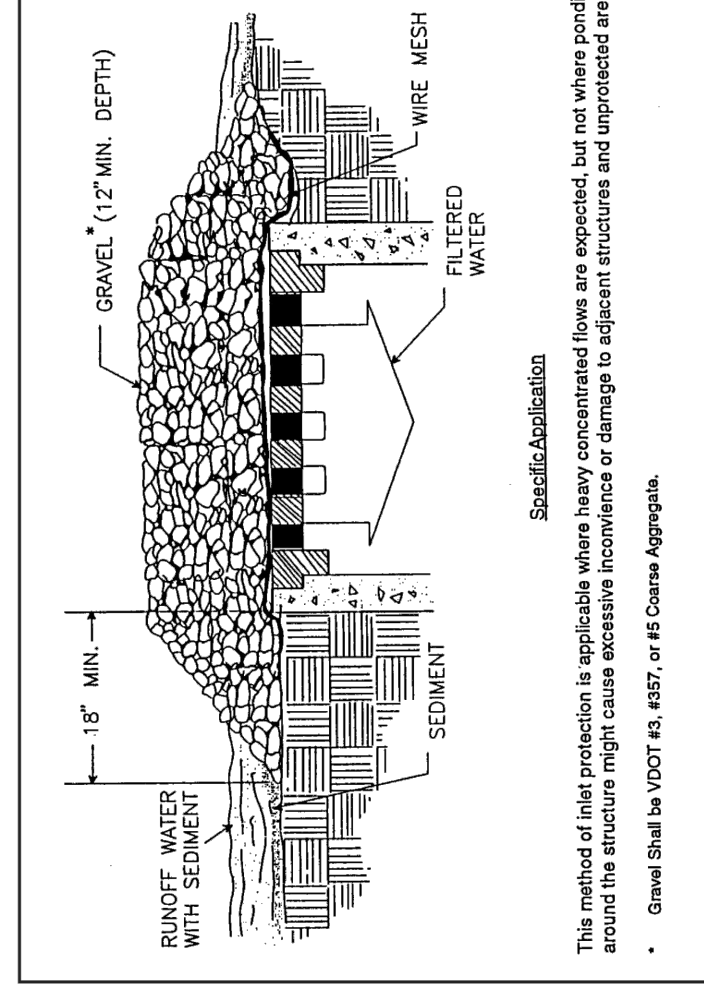


FIGURE 4.5c. GRAVEL AND WIRE MESH DROP INLET SEDIMENT FILTER  
SOURCE: FLORIDA STORMWATER EROSION AND SEDIMENTATION CONTROL INSPECTOR'S MANUAL

- Block and Gravel Drop Inlet Sediment Filter**
1. Place concrete blocks lengthwise on their sides in a single row around the perimeter of the inlet, with the ends of adjacent blocks abutting. The height of the barrier can be varied, depending on design needs, by stacking combinations of 4, 6, and 12 inch (10, 20, and 30 cm) blocks. The maximum height shall not exceed 12 inches (30 cm) high and no greater than 24 inches (60 cm) high.
  2. Wire mesh shall be placed over the outside vertical face (webbing) of the concrete blocks to prevent stone from being washed through the holes in the blocks. Hardware cloth or comparable wire mesh with 1/2 inch (13 mm) openings shall be used (see Figure 4.5d).
  3. Stone shall be piled against the wire to the top of the block barrier.
  4. If the stone filter becomes clogged with sediment so that it no longer adequately performs its function, the stone must be pulled away from the blocks, cleaned, and replaced.

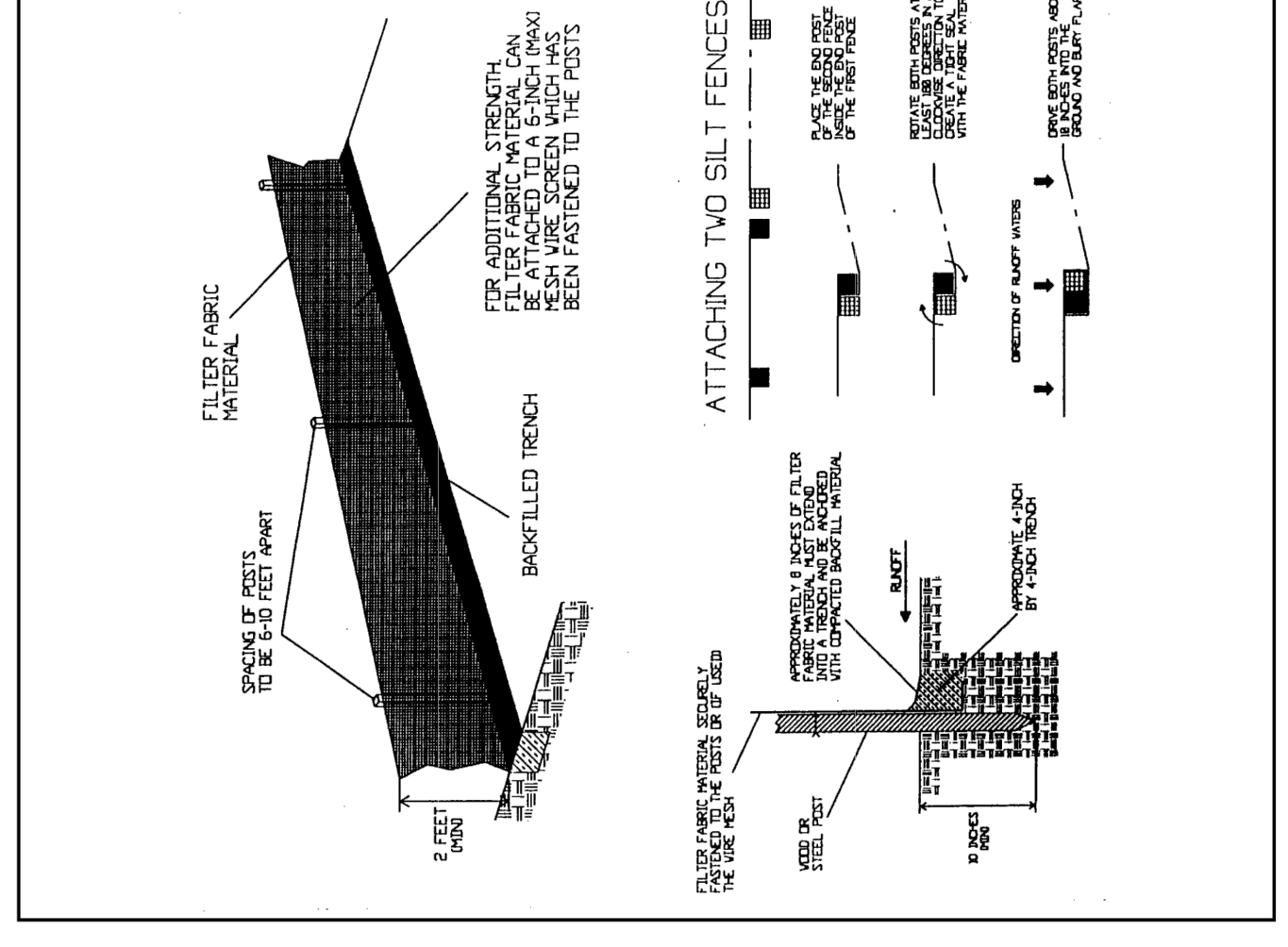


FIGURE 4.4b. INSTALLING A FILTER FABRIC SILT FENCE  
SOURCE: FLORIDA STORMWATER EROSION AND SEDIMENTATION CONTROL INSPECTOR'S MANUAL

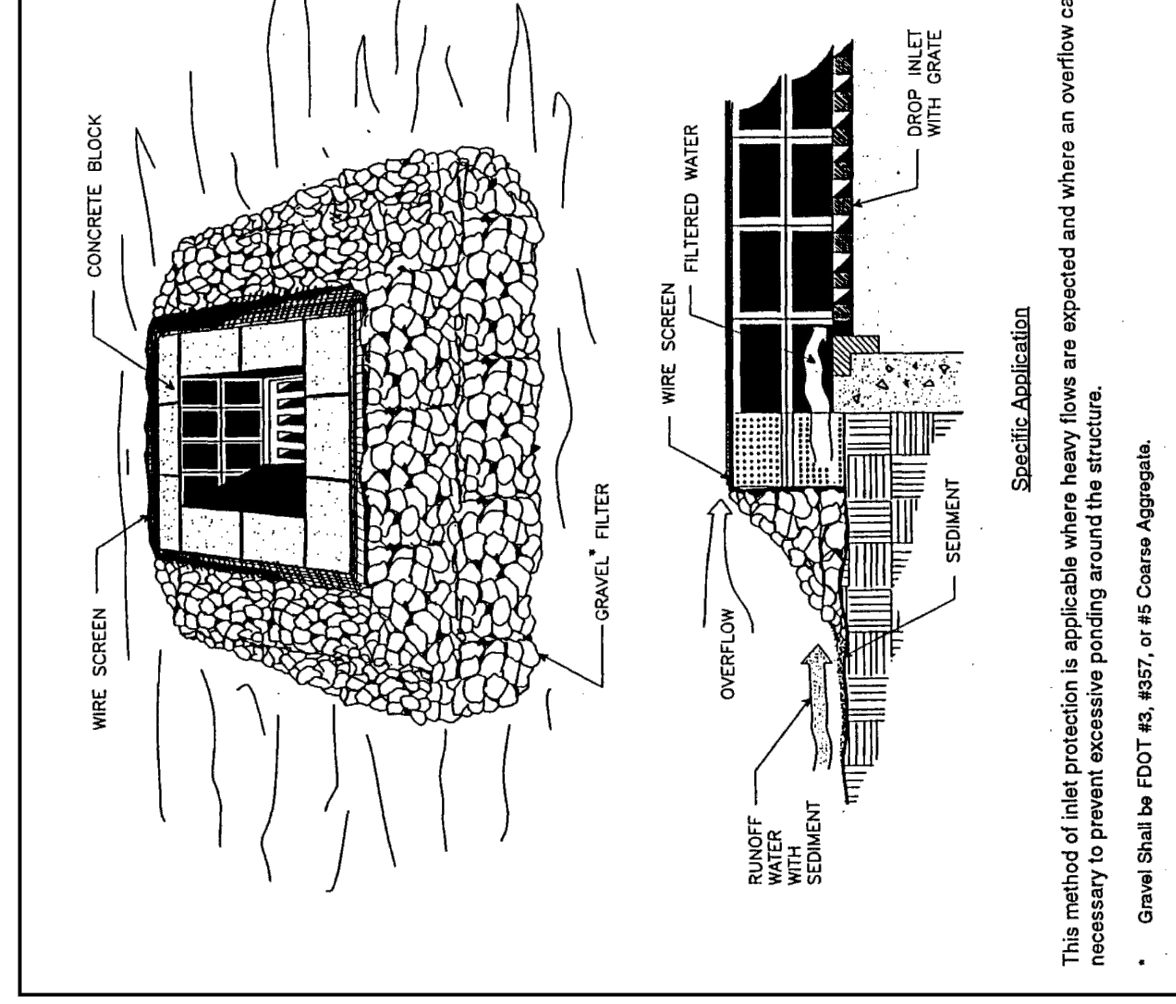


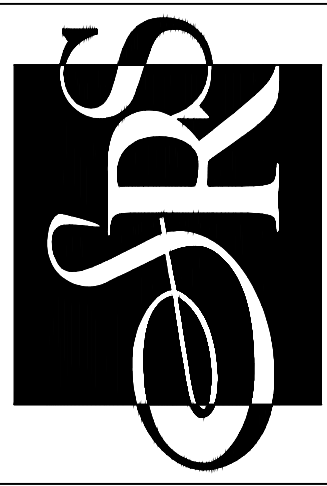
FIGURE 4.5d. BLOCK AND GRAVEL DROP INLET SEDIMENT FILTER  
SOURCE: FLORIDA STORMWATER EROSION AND SEDIMENTATION CONTROL INSPECTOR'S MANUAL

REV	DATE	DESCRIPTION

DESIGN DELIVERABLE: PERMIT SUBMITTAL  
ISSUE DATE: 07/14/2017

PROJECT NUMBER: 07020.16  
DRAWN BY: PW  
CHECKED BY: MG  
Copyright © by SYNALOVSKI ROMANIKSAYE  
All Rights Reserved.  
SHEET TITLE:





**SYNALOVSKI ROMANIKSAYE**  
 Architectural • Planning • Interior Design  
 1800 Eller Drive, Suite 500  
 Fort Lauderdale, FL 33316  
 T 954.961.6806  
 F 954.961.6807  
 www.synalovskiro.com

**K&E ENGINEERS**  
 consulting engineers  
 301 East Atlantic Boulevard  
 Pompano Beach, Florida 33060-6643  
 (954) 788-3400; FAX (954) 788-3500  
 Authorization Number - 7928  
 State of Florida Certificate of

STEPHEN D. WILLIAMS, P.E.  
 FLORIDA REG. NO. 32090  
 (FOR THE FIRM)

**CHARLOTTE J. BURRIE**  
 2669 NORTH FEDERAL HIGHWAY  
 POMPAÑO BEACH, FL 33064  
 CLIENT: CITY OF POMPAÑO BEACH

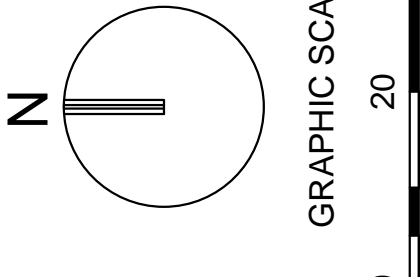
REV.	DATE	DESCRIPTION
1	05/20/16	REVISED PER CITY COMMENTS

DESIGN DELIVERABLE: PERMIT SUBMITTAL  
 ISSUE DATE: 07/14/2017

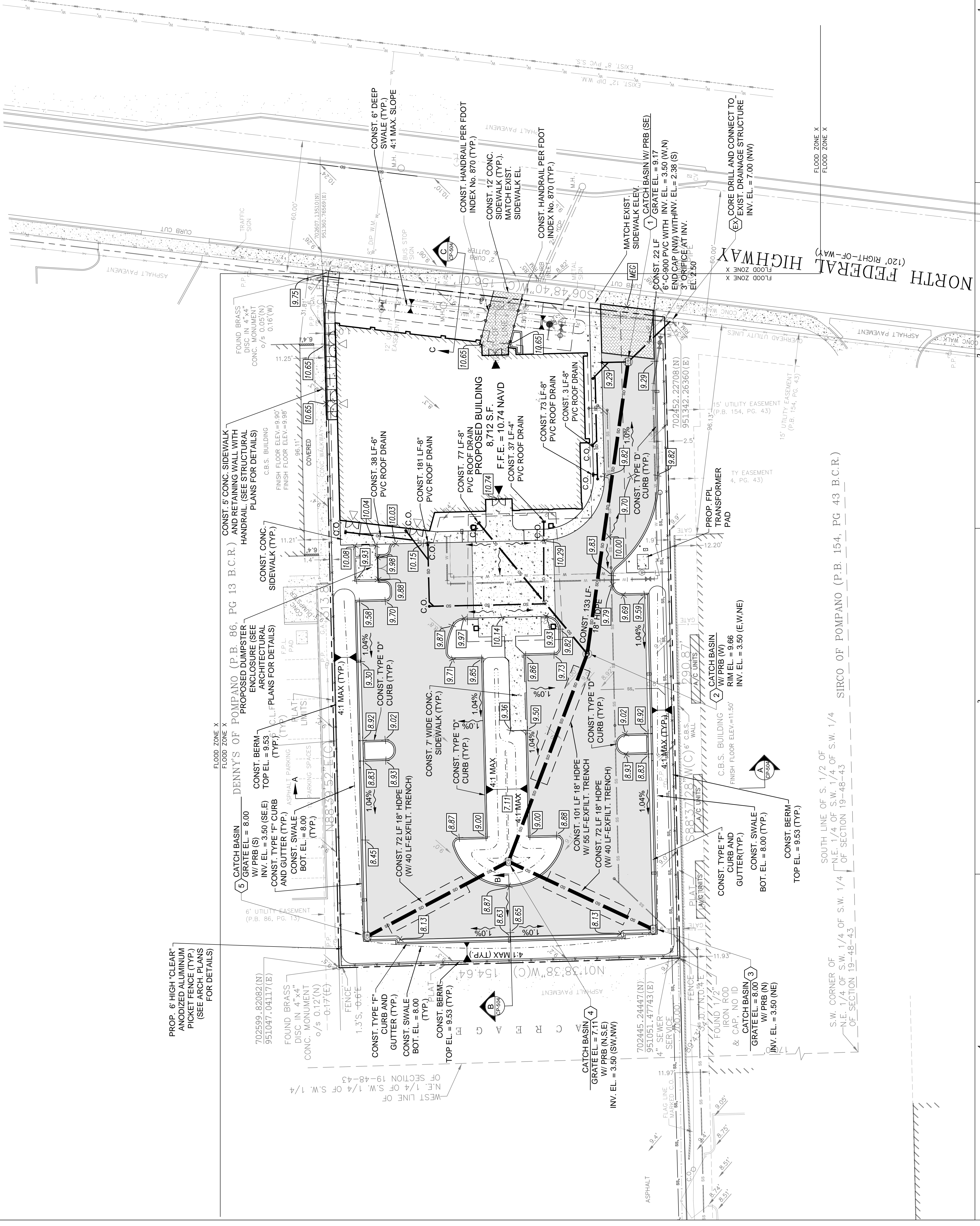
PROJECT NUMBER: 07020-16  
 DRAWN BY: PW  
 CHECKED BY: MG  
 Copyright © by SYNALOVSKI ROMANIKSAYE  
 All Rights Reserved.

**PAVING, GRADING, AND DRAINAGE PLAN**

SHEET NUMBER: CP-101



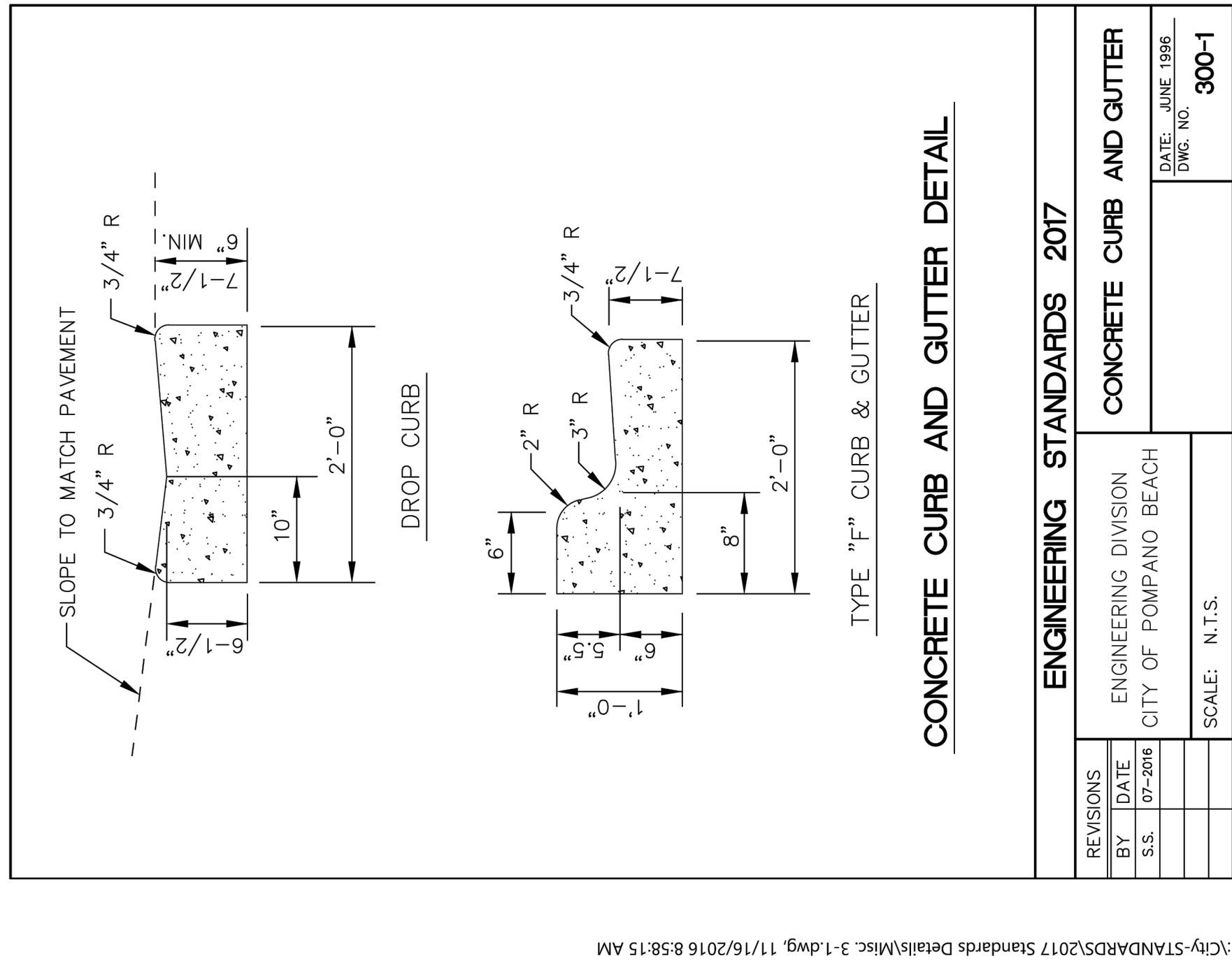
NOTE: PRINTED DRAWING SIZE MAY HAVE CHANGED FROM ORIGINAL. VERIFY SCALE USING BAR SCALE ABOVE. ALL GRADES ARE NAVD '88



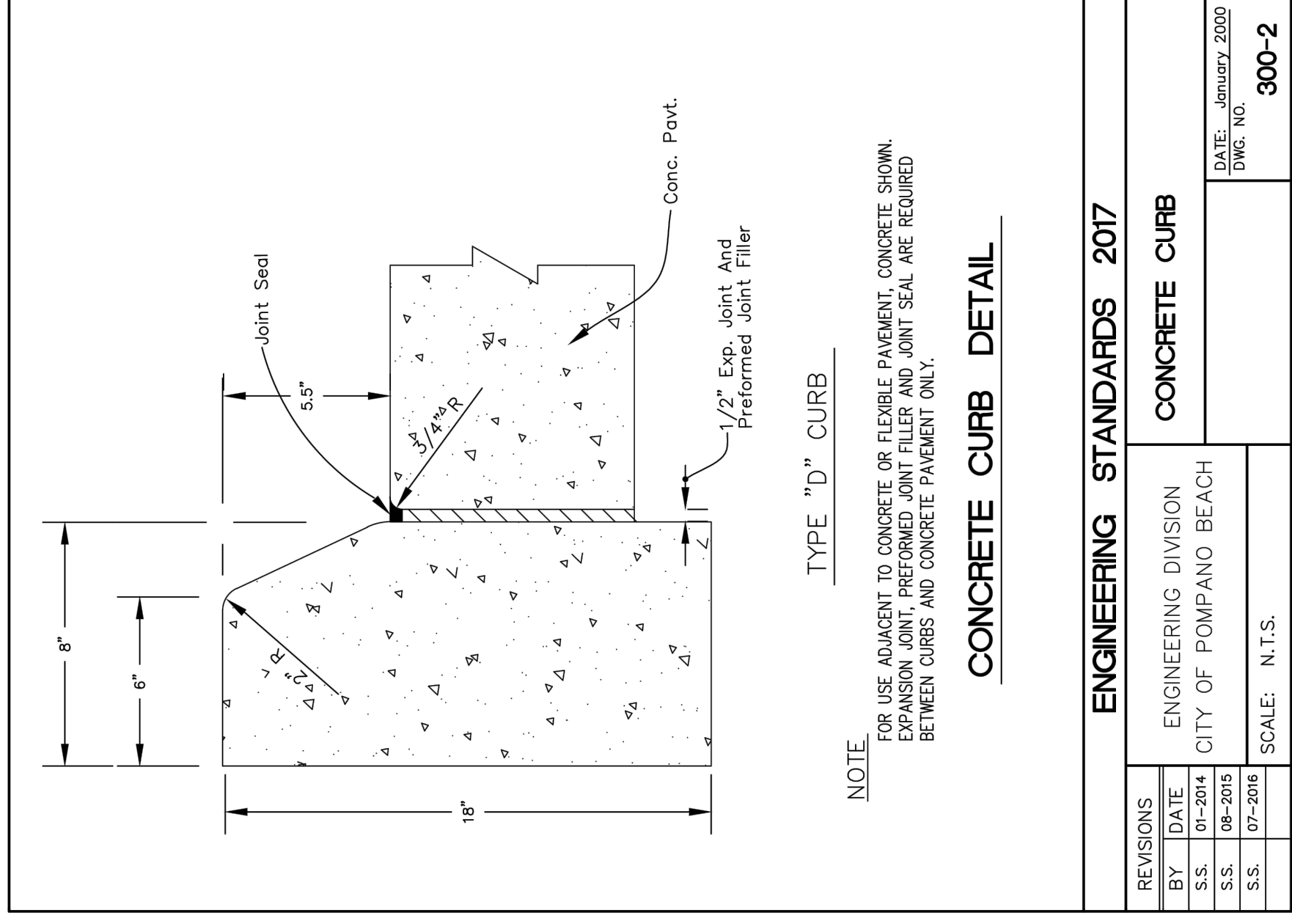
SOUTH LINE OF S. 1/2 OF N.E. 1/4 OF S.W. 1/4 OF SECTION 19-48-43

S.W. CORNER OF N.E. 1/4 OF S.W. 1/4 OF SECTION 19-48-43

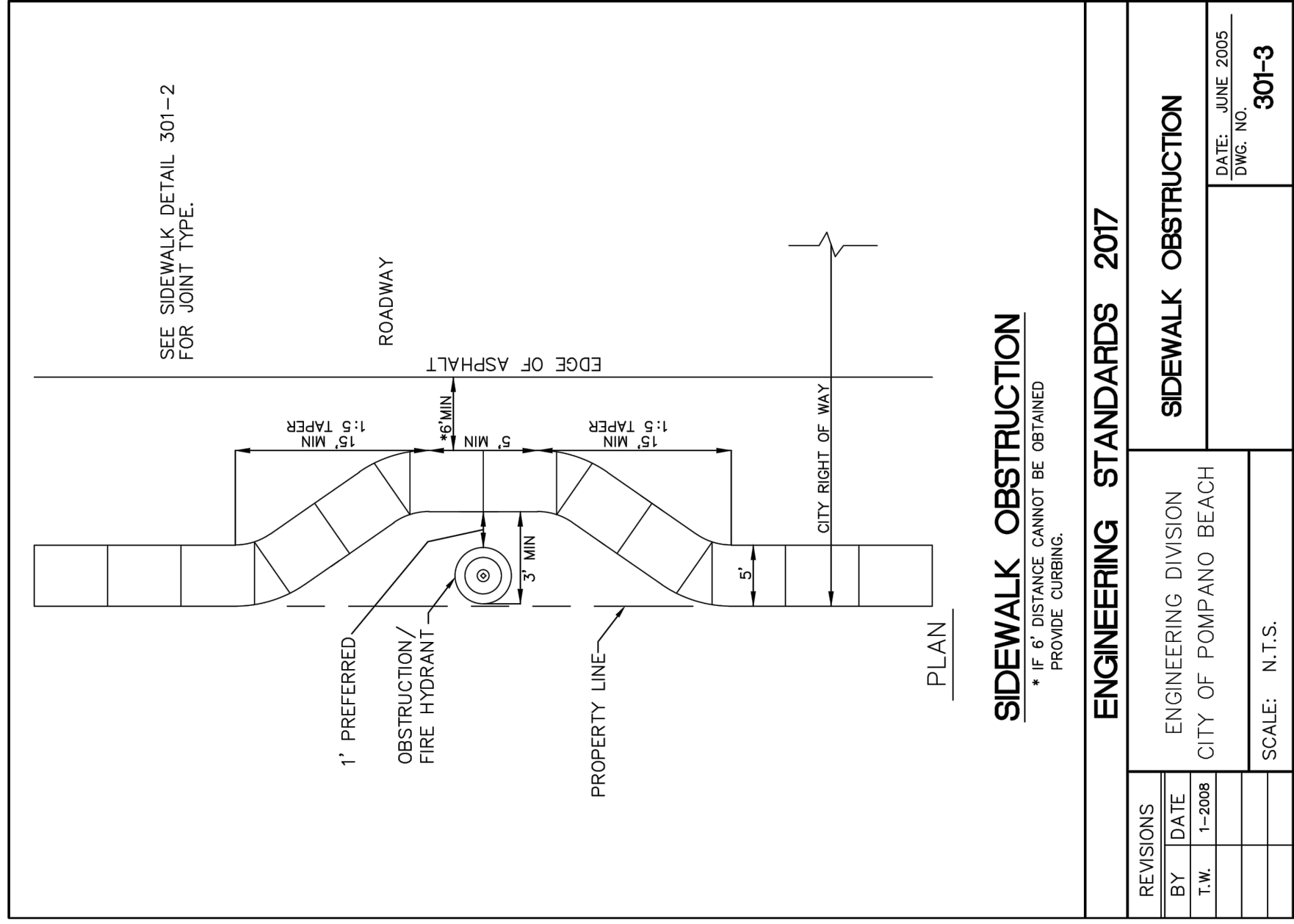
SIRCO OF POMPAÑO (P.B. 154, PG 43 B.C.R.)



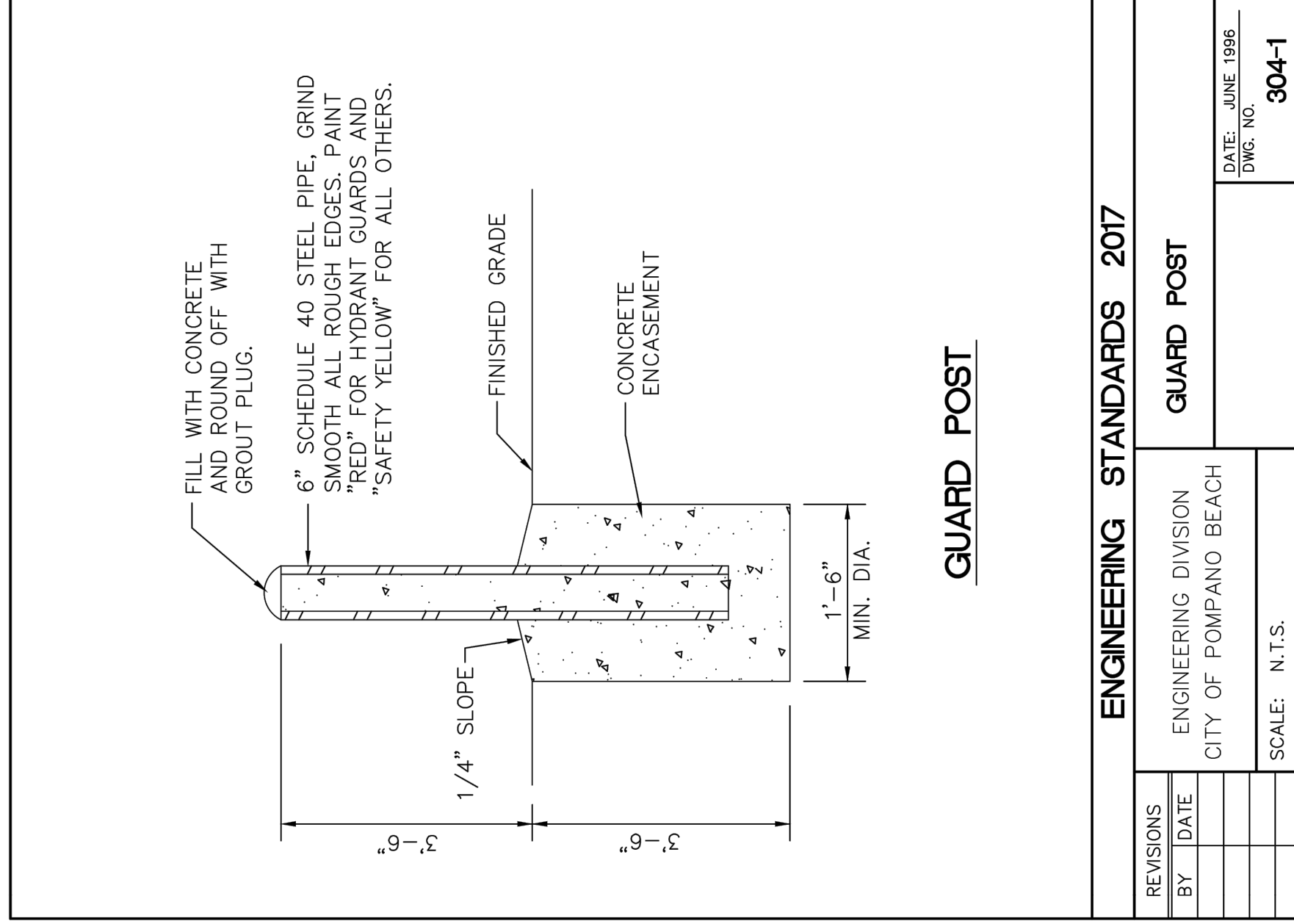
J:\City-STANDARDS\2017 Standards Details\Misc 3-1.dwg, 11/16/2016 8:58:15 AM



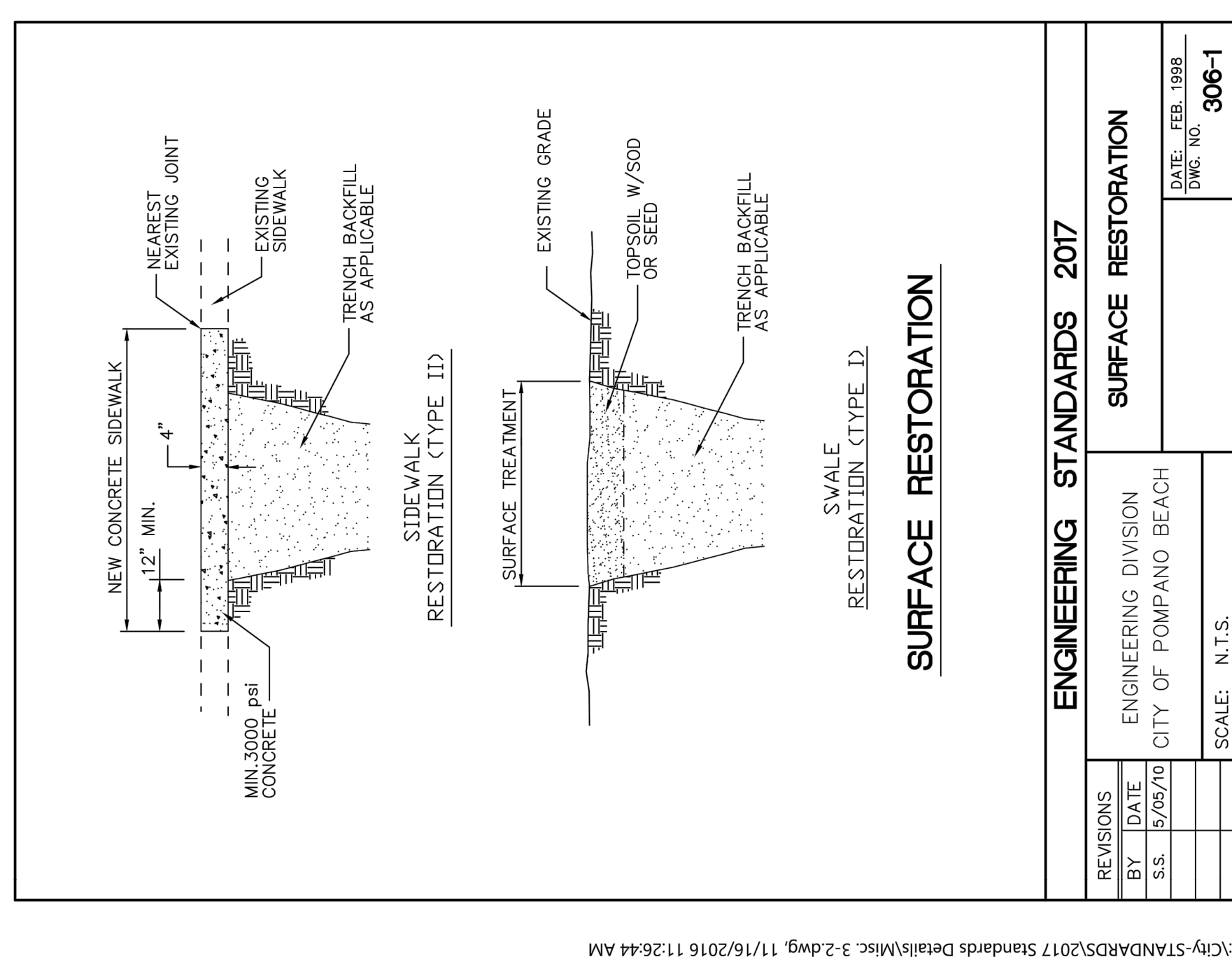
J:\City-STANDARDS\2017 Standards Details\Misc 3-1.dwg, 11/16/2016 8:59:58 AM



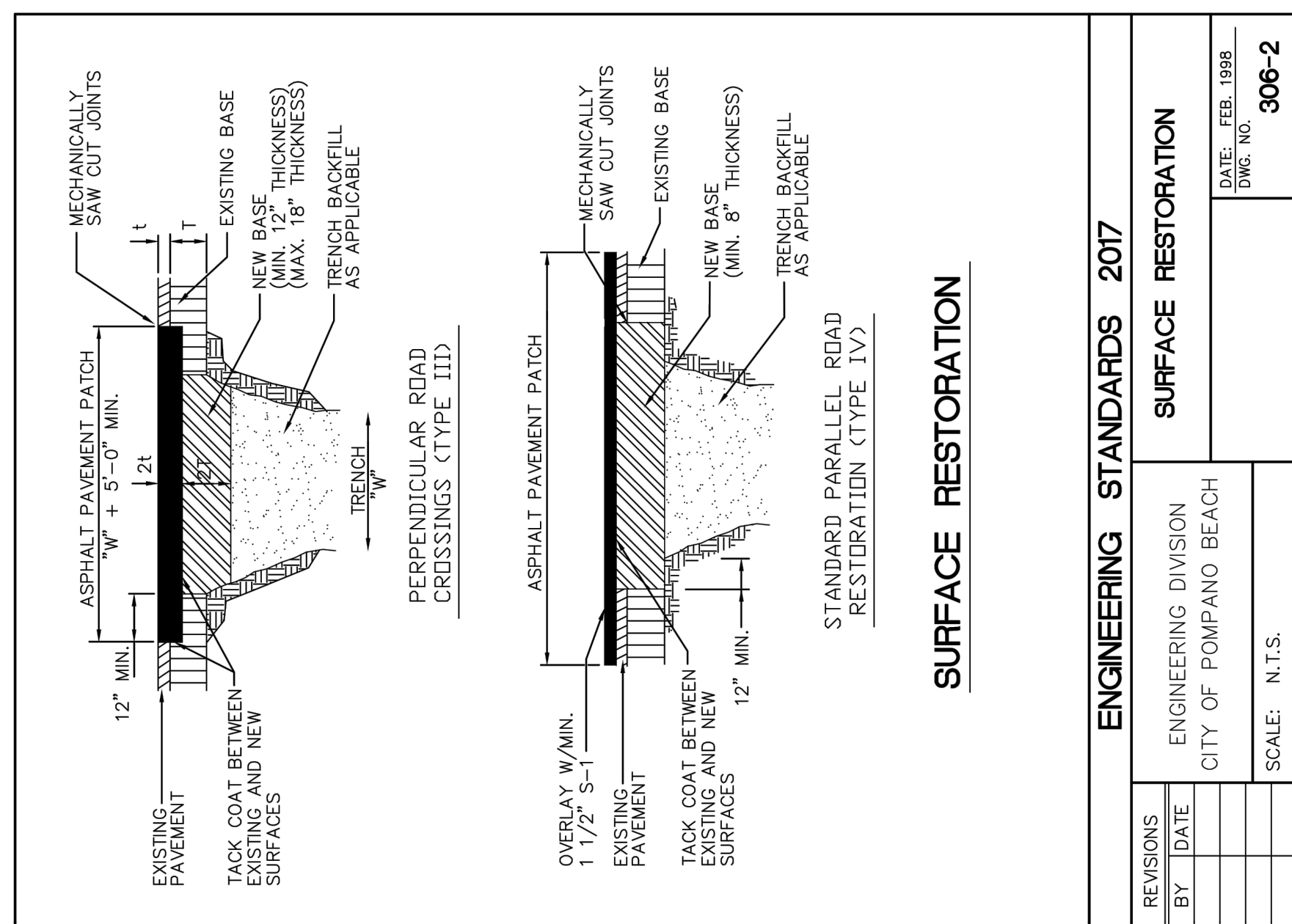
J:\City-STANDARDS\2017 Standards Details\Misc 3-1.dwg, 11/16/2016 9:07:04 AM



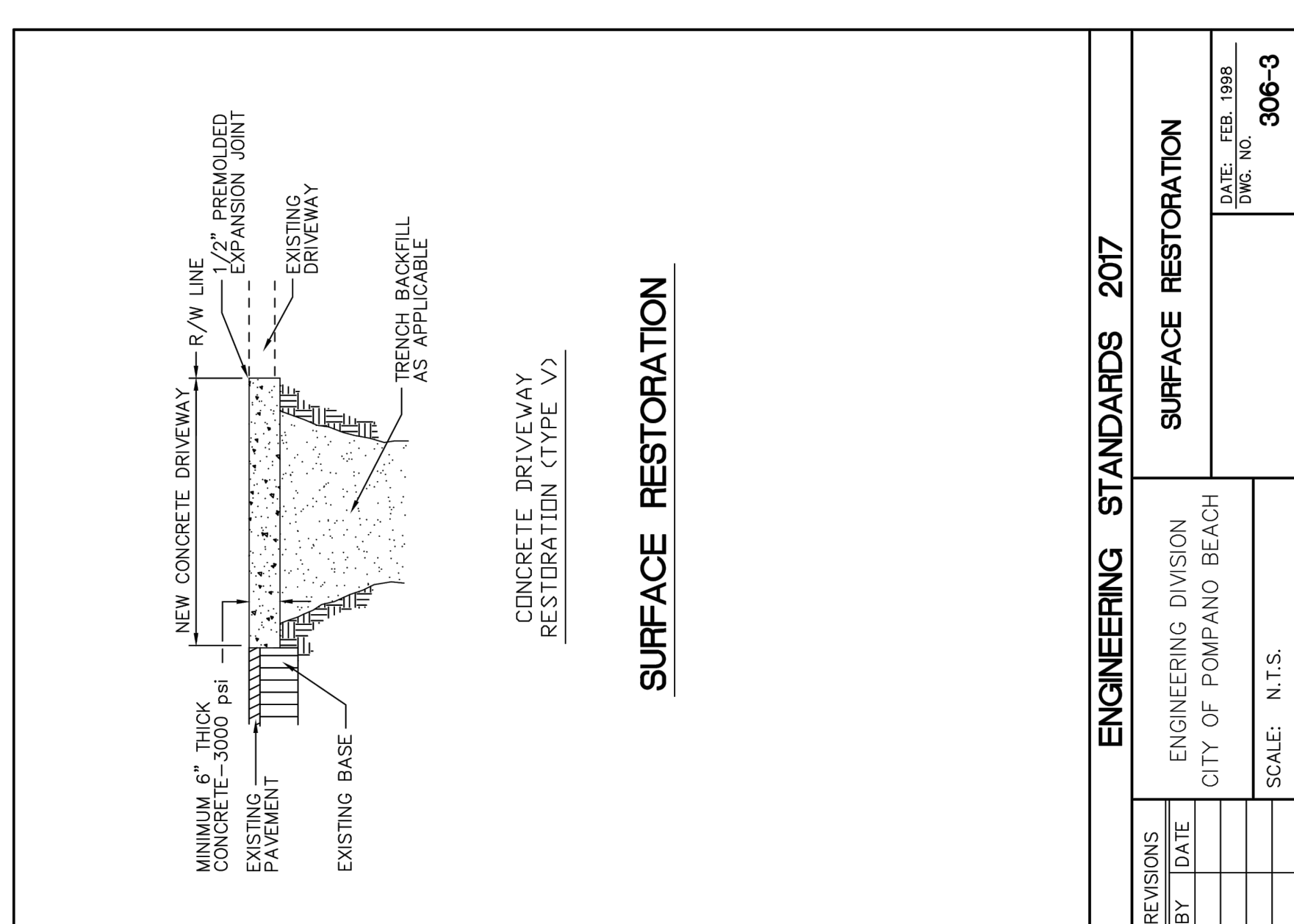
J:\City-STANDARDS\2017 Standards Details\Misc 3-2.dwg, 11/16/2016 11:23:08 AM



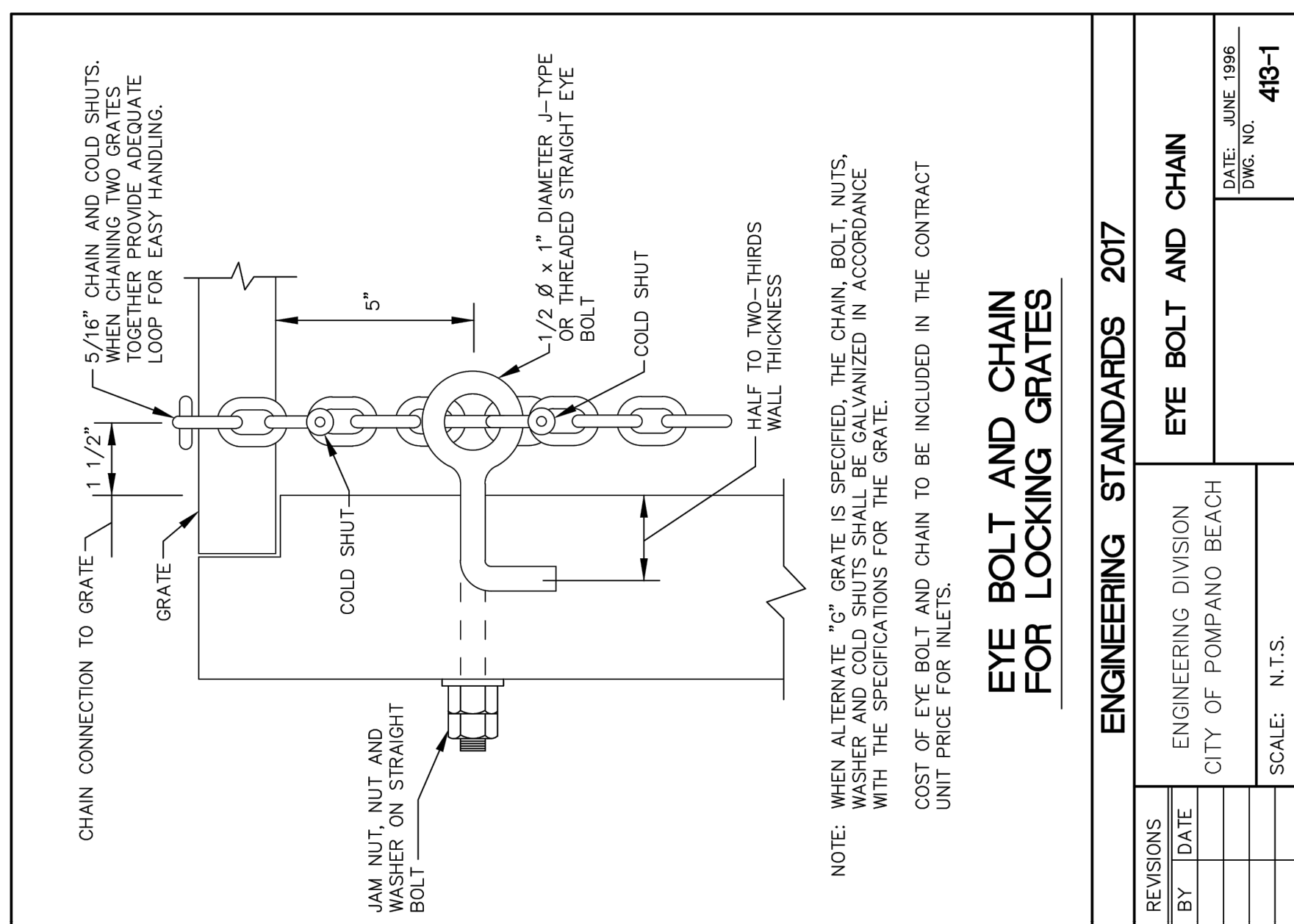
J:\City-STANDARDS\2017 Standards Details\Misc 3-2.dwg, 11/16/2016 11:26:44 AM



J:\City-STANDARDS\2017 Standards Details\Misc 3-2.dwg, 11/16/2016 11:27:41 AM



J:\City-STANDARDS\2017 Standards Details\Misc 3-2.dwg, 11/16/2016 11:28:32 AM



J:\City-STANDARDS\2017 Standards Details\Drainage 4-3.dwg, 11/16/2016 1:46:52 PM

CLIENT: CITY OF POMPAHO BEACH  
2669 NORTH FEDERAL HIGHWAY  
POMPAHO BEACH, FL 33064

**CHARLOTTE J. BURRIE**

STEPHEN D. WILLIAMS, P.E.  
FLORIDA REG. NO. 32008  
(FOR THE FIRM)

301 East Atlantic Boulevard  
Pompano Beach, Florida 33060-6643  
(954) 788-3400; FAX (954) 788-3500  
KATH ASSOCIATES, INC.  
consulting engineers

1800 Blier Drive, Suite 500  
Fort Lauderdale, FL 33316  
T 954.961.6806  
F 954.961.6807  
www.synalovski.com

SYNALOVSKI ROMANTIKSAVE  
Architects • Planning • Interior Design

DESIGN DELIVERABLE: PERMIT SUBMITTAL  
ISSUE DATE: 07/14/2017

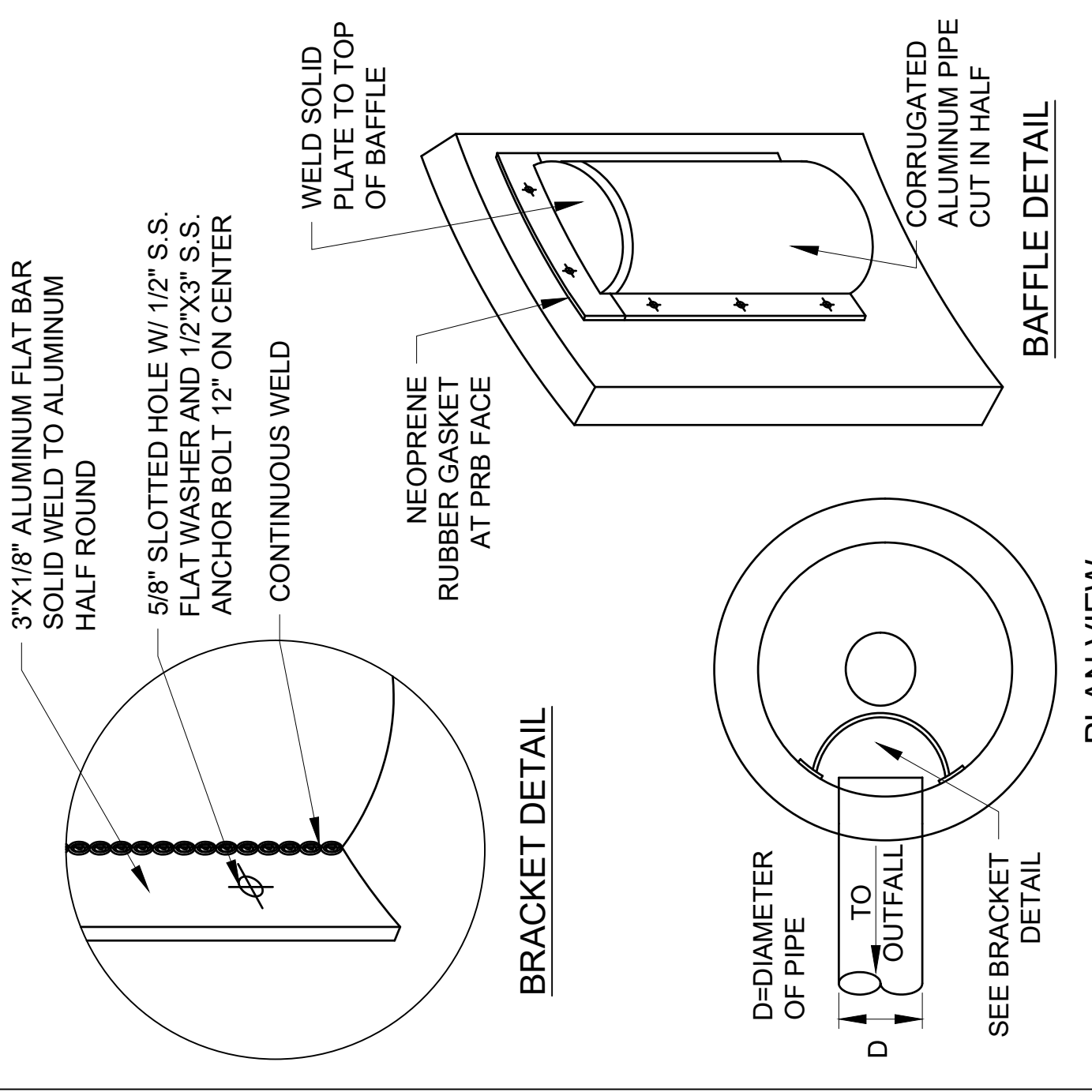
PROJECT NUMBER: 07020.16  
DRAWN BY: PW  
CHECKED BY: MG  
Copyright © by SYNALOVSKI ROMANTIKSAVE  
All Rights Reserved.  
SHEET TITLE:

**PAVING, AND  
DRAINAGE  
DETAILS**

SHEET NUMBER: CP-501







**BRACKET DETAIL**

3"X1/8" ALUMINUM FLAT BAR SOLID WELD TO ALUMINUM HALF ROUND

5/8" SLOTTED HOLE W/ 1/2" S.S. FLAT WASHER AND 1/2"X3" S.S. ANCHOR BOLT 12" ON CENTER

CONTINUOUS WELD

NEOPRENE RUBBER GASKET AT PRB FACE

WELD SOLID PLATE TO TOP OF BAFFLE

**BAFFLE DETAIL**

CORRUGATED ALUMINUM PIPE CUT IN HALF

SEE BRACKET DETAIL

**PLAN VIEW**

D-DIAMETER OF PIPE

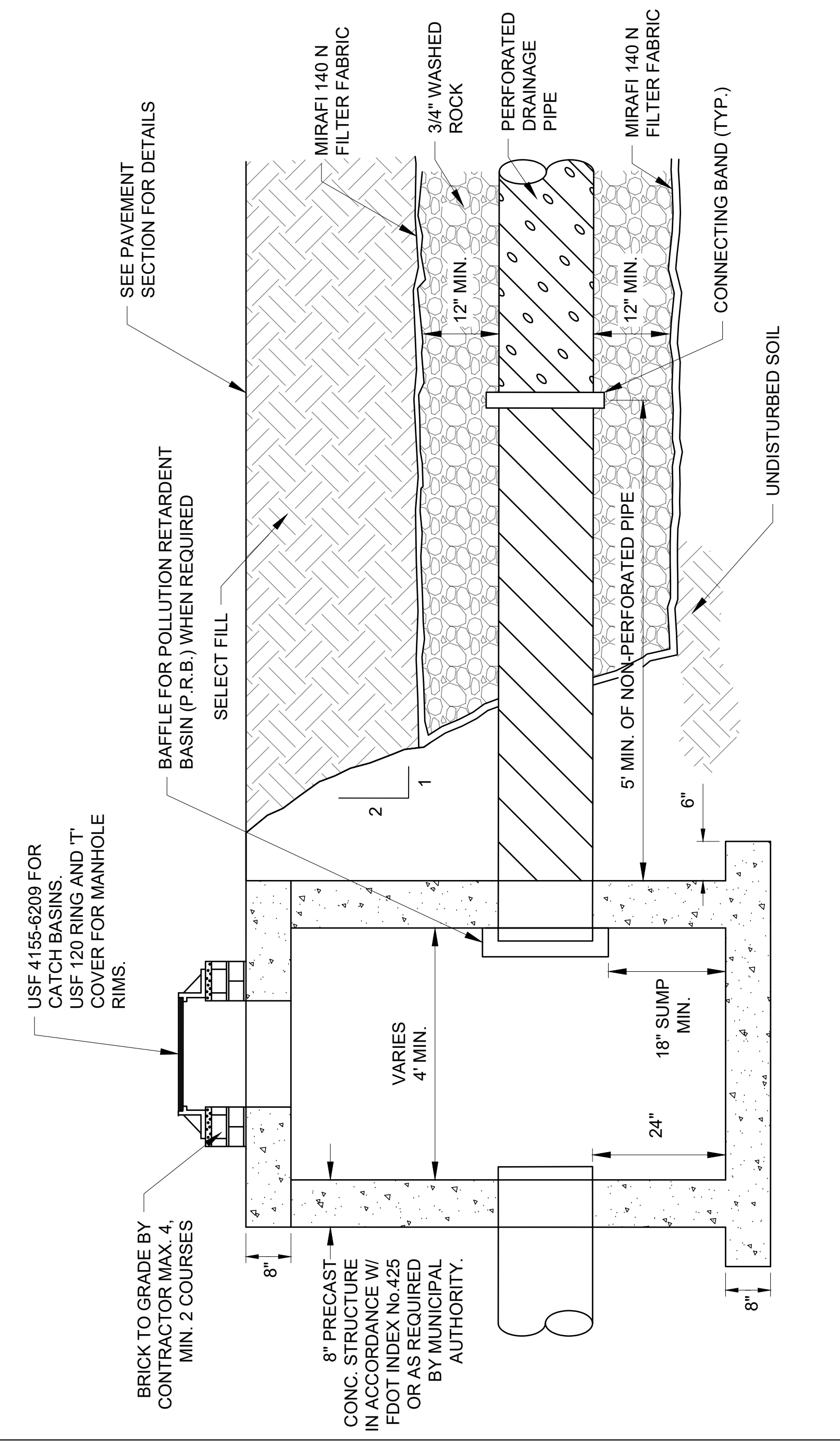
TO OUTFALL

**NOTE:** BAFFLE TO BE A SECTION OF CAP CUT IN HALF CAP FOR BAFFLE SHALL BE THE NEXT STANDARD PIPE DIAMETER LARGER THAN THE INFLOW/ OUTFLOW PIPE.

**12**

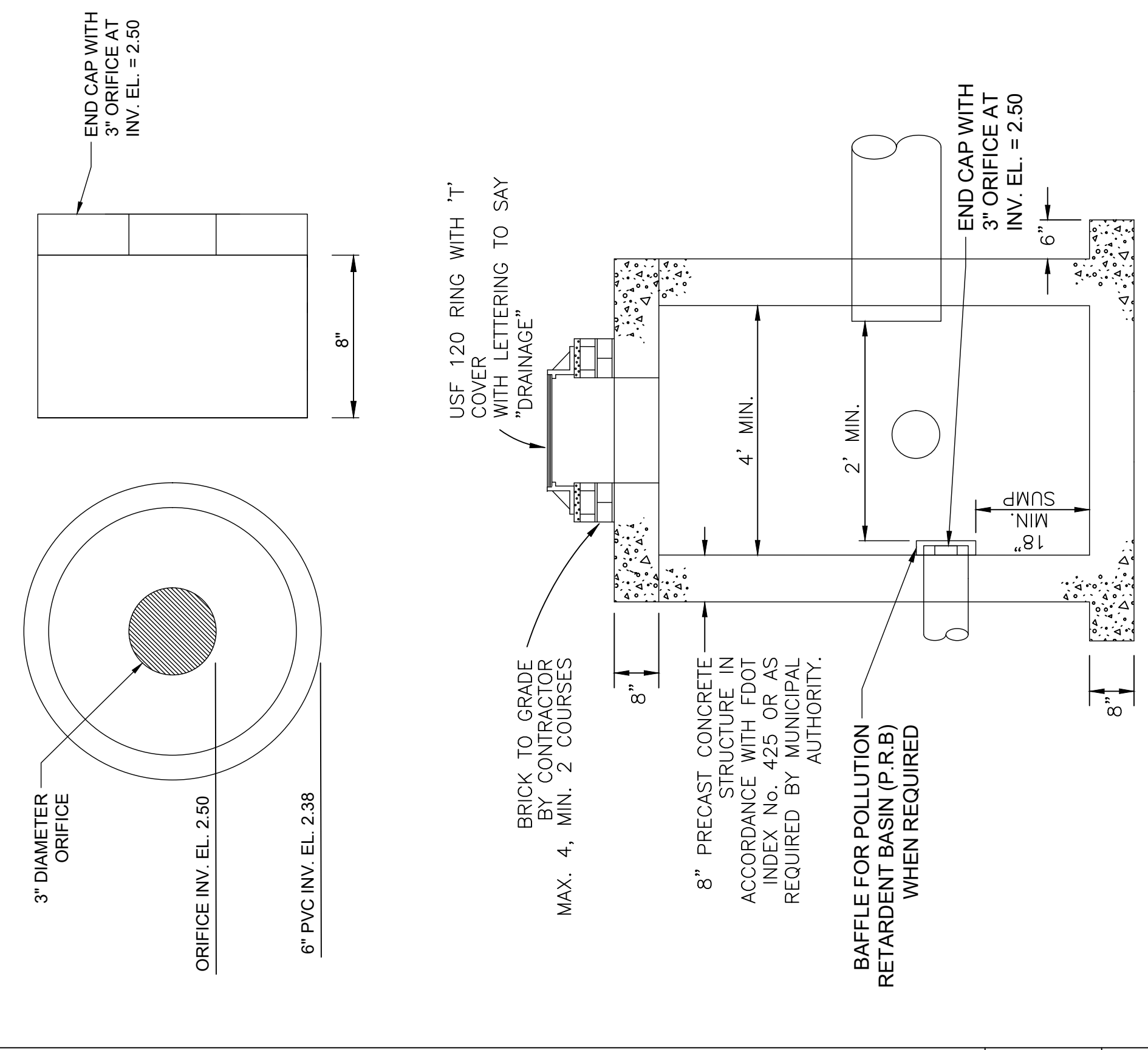
**POLLUTION RETARDANT BAFFLE DETAIL**

SCALE: NOT TO SCALE



**CATCH BASIN W/ P.R.B. ABD EXFILTRATION TRENCH**

SCALE: NOT TO SCALE



**CATCH BASIN WITH P.R.B. #1 PVC PIPE END CAP W/ 3" ORIFICE**

N.T.S.

**SYNALOVSKI ROMANIKSAYE**  
 Associates • Planning • Interior Design

1800 Elder Drive, Suite 500  
 Fort Lauderdale, FL 33316  
 T 954.961.6806  
 F 954.961.6807  
 www.synalovski.com

**KETH ASSOCIATES INC.**  
 consulting engineers

301 East Atlantic Boulevard  
 Pompano Beach, Florida 33060-6643  
 (954) 788-3400; FAX (954) 788-3500  
 State of Florida Certificate of Authorization Number - 7928

STEPHEN D. WILLIAMS, P.E.  
 FLORIDA REG. NO. 32086  
 (FOR THE FIRM)

**CHARLOTTE J. BURRIE CIVIC CENTER**  
 2669 NORTH FEDERAL HIGHWAY  
 POMPAHO BEACH, FL 33064

CLIENT: CITY OF POMPAHO BEACH

REV.	DATE	DESCRIPTION	REVISION PER CITY COMMENTS
1	05/08/18		

DESIGN DELIVERABLE: PERMIT SUBMITTAL  
 ISSUE DATE: 07/14/2017

PROJECT NUMBER: 17020-16  
 DRAWN BY: PW  
 CHECKED BY: MG

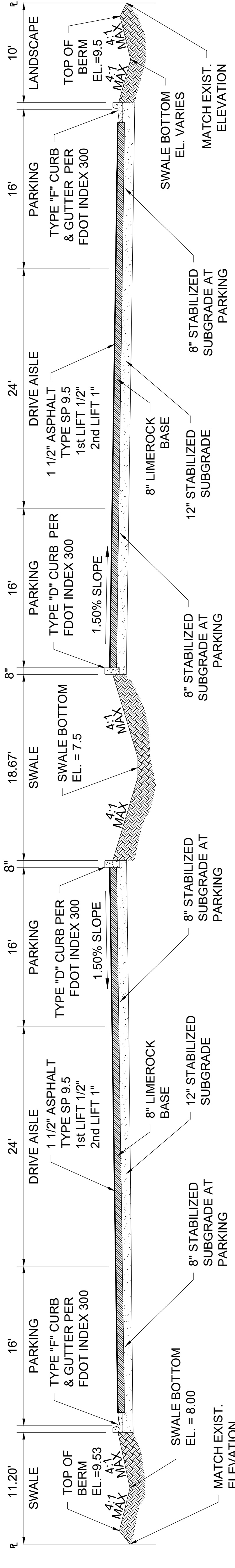
Copyright © by SYNALOVSKI ROMANIKSAYE  
 All Rights Reserved.

**PAVING, AND GRADING, AND DRAINAGE DETAILS**

SHEET NUMBER: CP-503

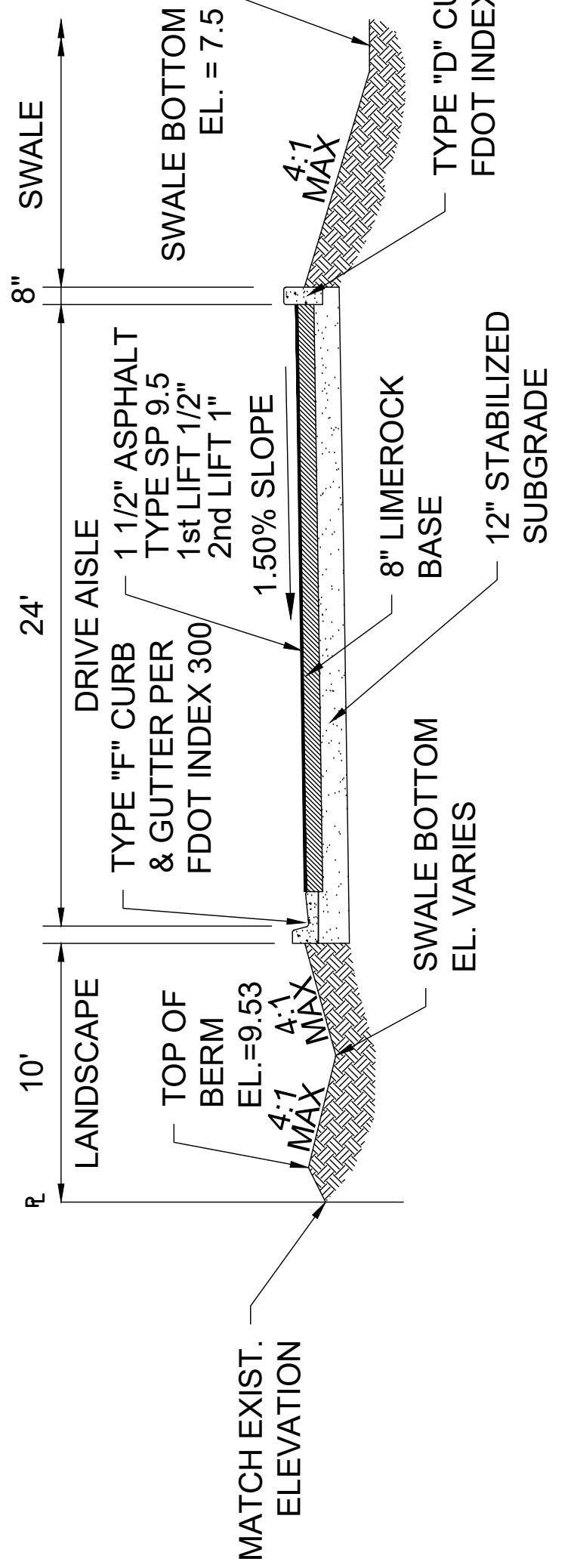
**NOTE:**

- STRUCTURE MANUFACTURER AND/OR CONTRACTOR SHALL CONFIRM ALL STEEL REINFORCEMENT MEETS FDOT STANDARDS PER INDEX 200, SECTION 415 AND 425 PRIOR TO SUBMITTING ANY SHOP DRAWINGS FOR APPROVAL.
- LOCKING GRATES TO BE PROVIDED AS REQUIRED BY CITY OF POMPAHO BEACH



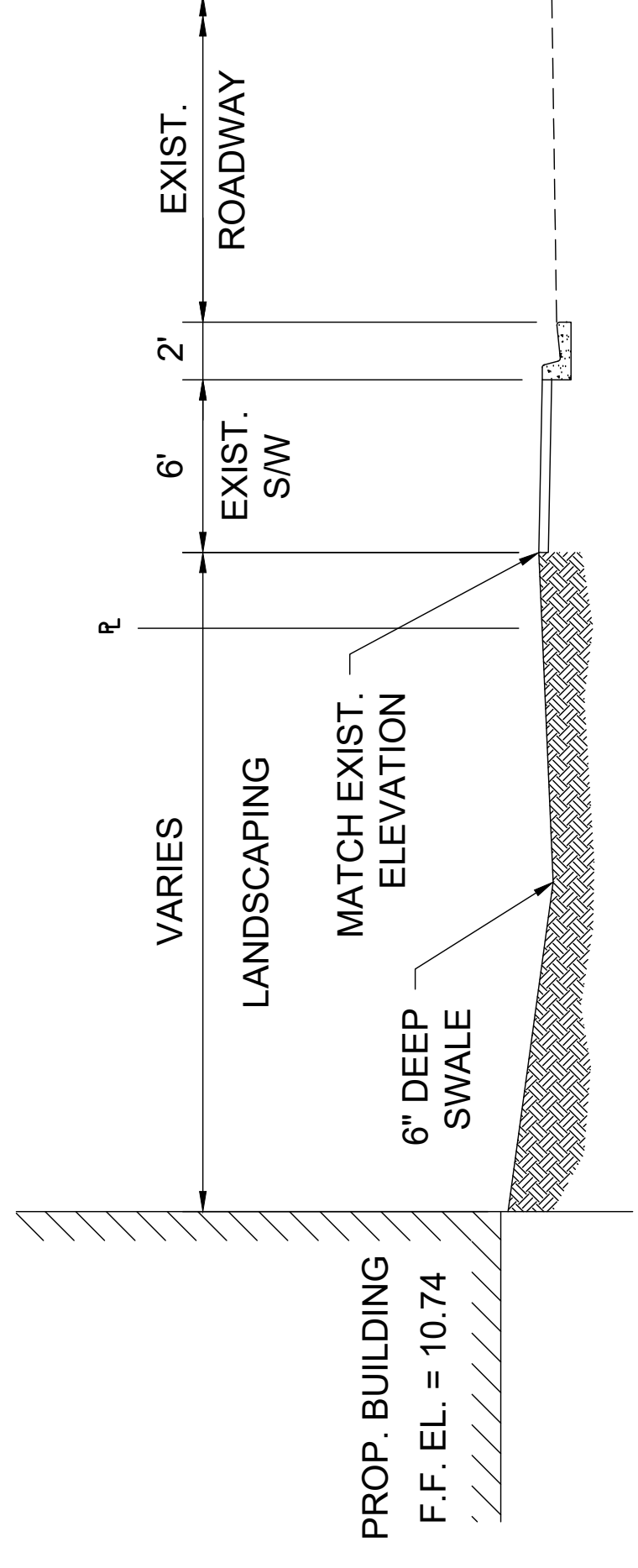
**SECTION 'A-A'**

N.T.S.



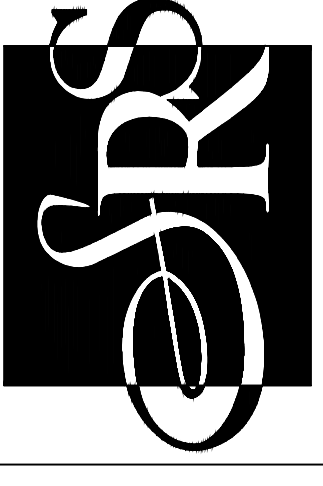
**SECTION 'B-B'**

N.T.S.



**SECTION 'C-C'**

N.T.S.



**SYNALOVSKI ROMANKISAYE**  
Architectural • Planning • Interior Design

1800 Eller Drive, Suite 500  
Fort Lauderdale, FL 33316  
T 954.961.6806  
F 954.961.6807  
www.synalovski.com

**KEITH ASSOCIATES, INC.**  
consulting engineers

301 East Atlantic Boulevard  
Pompano Beach, Florida 33060-6643  
(954) 788-3400; FAX (954) 788-3500  
Authorization Number - 7928

STEPHEN D. WILLIAMS, P.E.  
FLORIDA REG. NO. 23098  
(FOR THE FIRM)

**CHARLOTTE J. BURRIE**  
2669 NORTH FEDERAL HIGHWAY  
POMPANO BEACH, FL 33064

CLIENT: CITY OF POMPAO BEACH

REV	DATE	DESCRIPTION

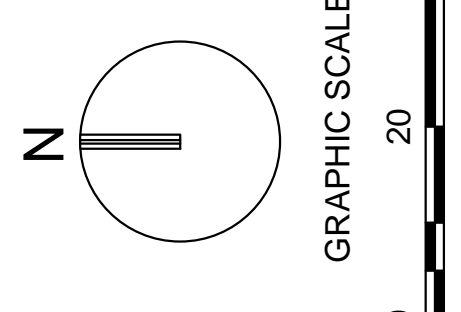
DESIGN DELIVERABLE: PERMIT SUBMITTAL  
ISSUE DATE: 07/14/2017

PROJECT NUMBER: 07020.16  
DRAWN BY: PW  
CHECKED BY: MG

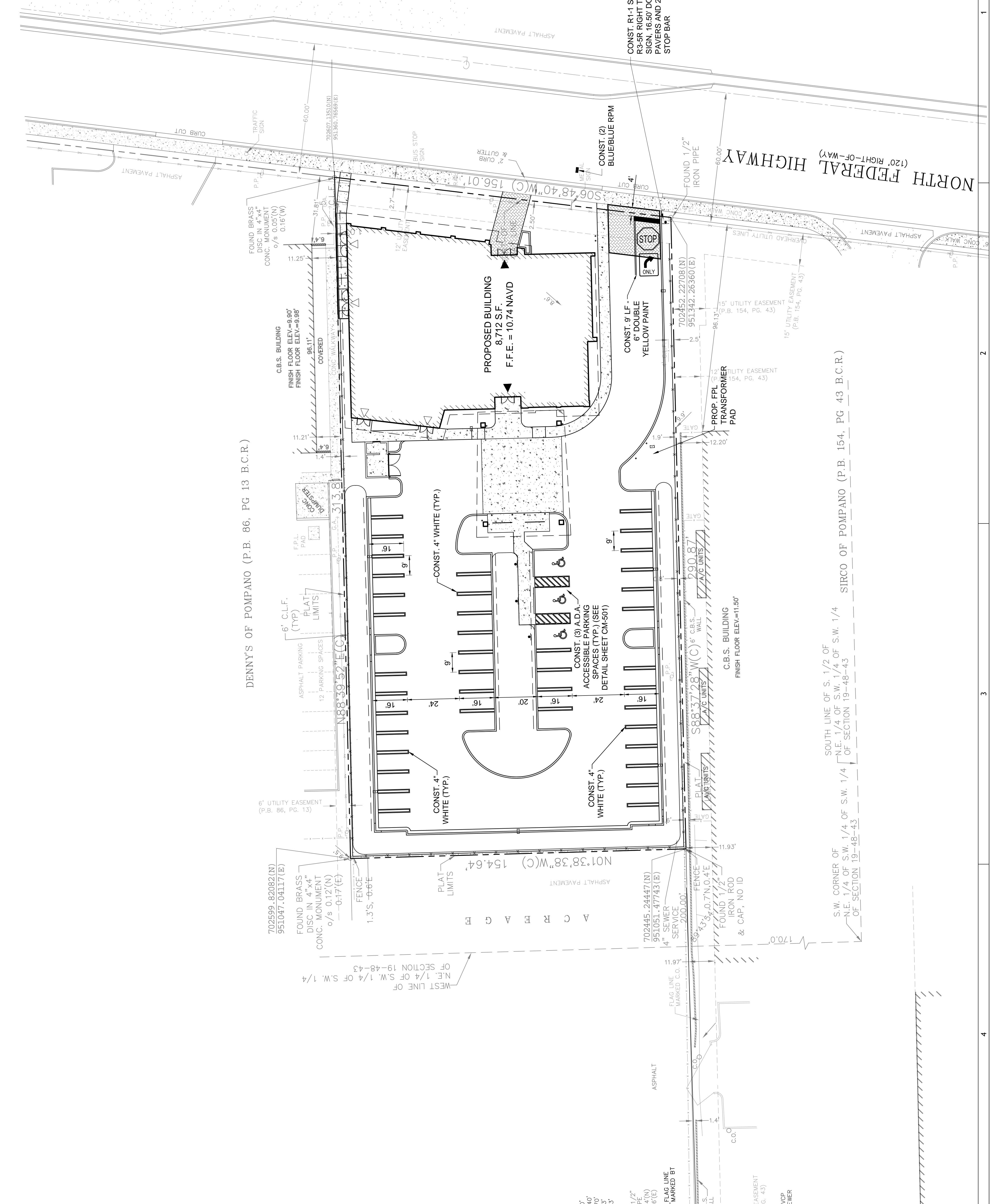
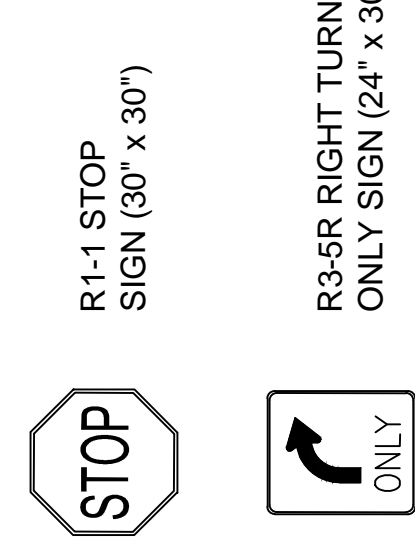
Copyright © by SYNALOVSKI ROMANKISAYE  
All Rights Reserved.

**PAVEMENT MARKING AND SIGNAGE PLAN**

SHEET NUMBER:  
**CM-101**



NOTE: PRINTED DRAWING SIZE MAY HAVE CHANGED FROM ORIGINAL. VERIFY SCALE USING BAR SCALE ABOVE. ALL GRADES ARE NAVD '88



SOUTH LINE OF S. 1/2 OF N.E. 1/4 OF S.W. 1/4 OF SECTION 19-48-43 OF SECTION 19-48-43

WEST LINE OF N.E. 1/4 OF S.W. 1/4 OF SECTION 19-48-43 OF SECTION 19-48-43

SIRCO OF POMPAO (P.B. 154, PG 43 B.C.R.)

1 2 3 4



**SYNALOVSKI ROMANIKSAVE**  
 Advisors • Planning • Survey Design  
 1900 Ellier Drive, Suite 500  
 Fort Lauderdale, FL 33316  
 T 954.961.6806  
 F 954.961.6807  
 www.srnad.com

**KEITH ASSOCIATES INC.**  
 Consulting Engineers  
 301 East Atlantic Boulevard  
 Pompano Beach, Florida 33060-6643  
 (954) 788-3400; FAX (954) 788-3500  
 State of Florida Certificate of  
 Authorization Number - 7928

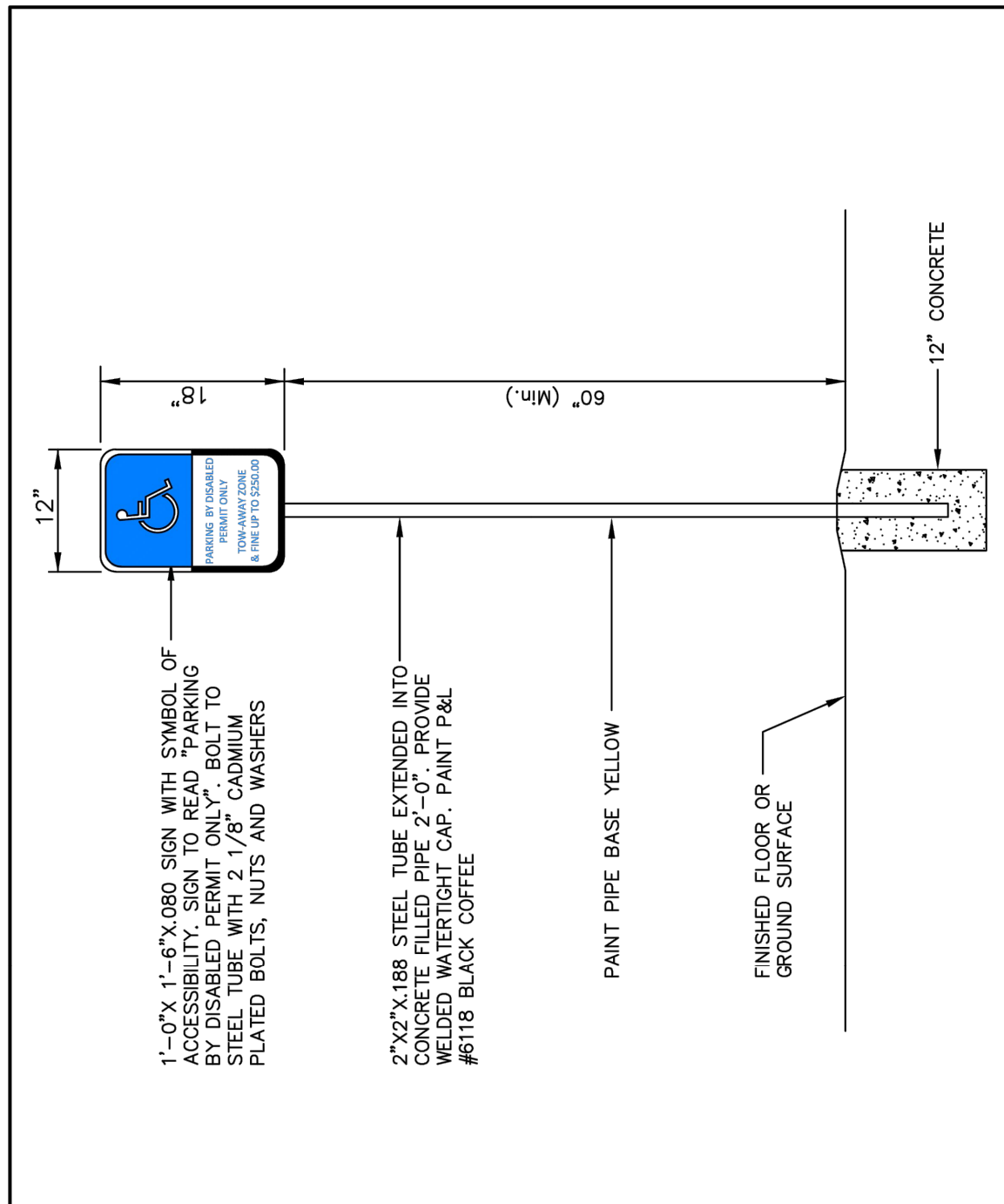
STEPHEN D. WILLIAMS P.E.  
 FLORIDA REG. NO. 320280  
 (FOR THE FIRM)

**CHARLOTTE J. BURRIE**  
 CIVIC CENTER  
 2669 NORTH FEDERAL HIGHWAY  
 POMPAÑO BEACH, FL 33064  
 CLIENT: CITY OF POMPAÑO BEACH

REV.	DATE	DESCRIPTION
1	05/20/16	REVISED PER CITY COMMENTS

DESIGN DELIVERABLE: PERMIT SUBMITTAL  
 ISSUE DATE: 07/14/2017  
 PROJECT NUMBER: 07020.16  
 DRAWN BY: PW  
 CHECKED BY: MG  
 Copyright © by SYNALOVSKI ROMANIKSAVE  
 All Rights Reserved.

PAVEMENT MARKING AND SIGNAGE DETAILS  
 CM-501  
 SHEET NUMBER

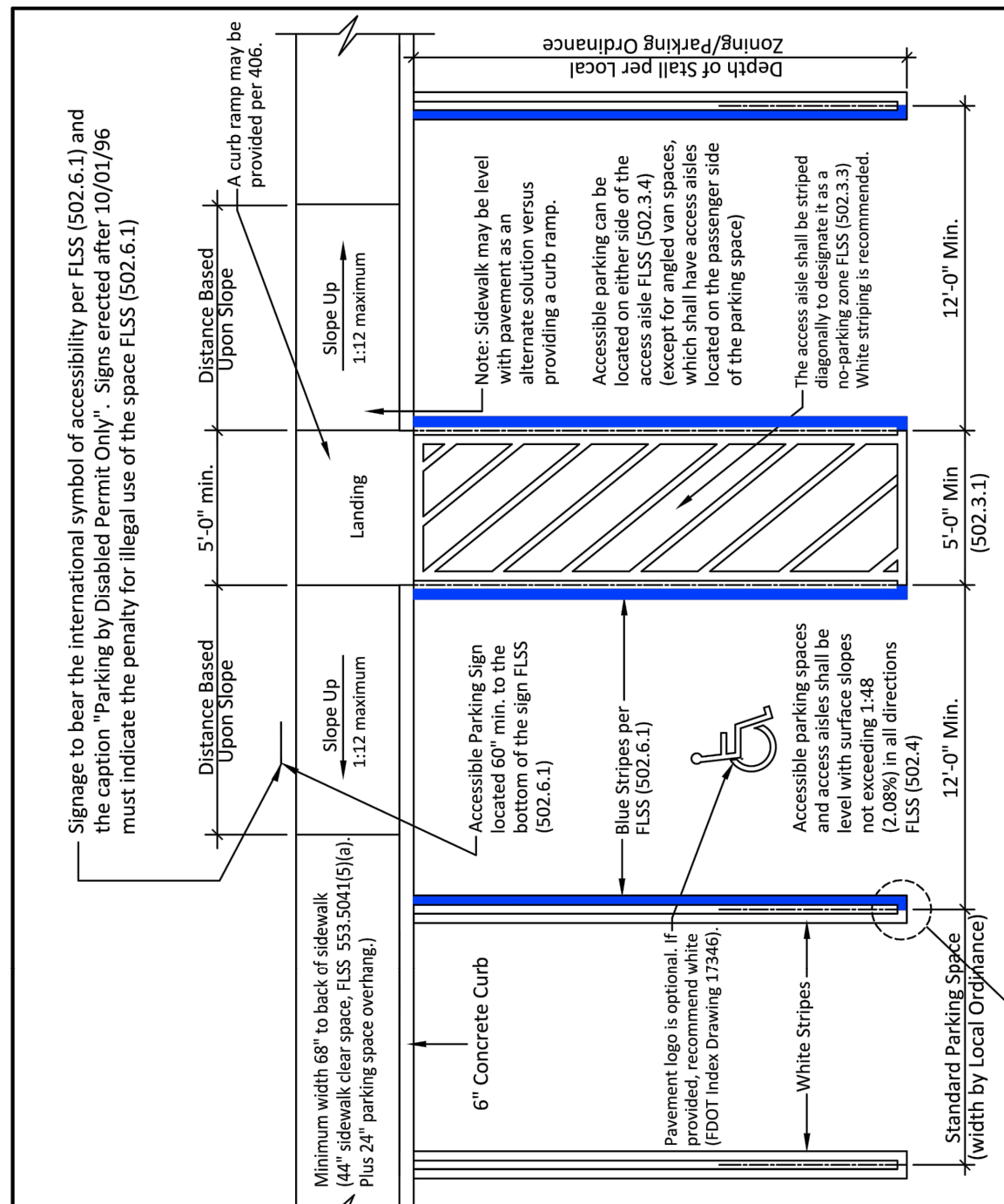


**ACCESSIBLE PARKING SPACE SIGN** N.T.S.

**SIGN NOTE**  
 ACCESSIBLE PARKING SPACES SHALL BE POSTED WITH A FIXED PARKING SIGN NO LARGER THAN 60" HIGHER TO THE SIGN AND WHICH BEARS THE INTERNATIONAL SYMBOL OF ACCESSIBILITY TO THE SIGN. THE SIGN SHALL BE MOUNTED TO A 2" DIA. STEEL TUBE EXTENDED INTO CONCRETE WITH 2 1/8" CADMIUM PLATED BOLTS, NUTS AND WASHERS. PROVIDE WELDED WEDGE FOOTING CAP, PAINT P&L #118 BLACK, GYTEL.

REVISIONS BY	DATE	DESCRIPTION

**ENGINEERING STANDARDS 2016**  
 ENGINEERING DIVISION  
 CITY OF POMPAÑO BEACH  
 DATE: December, 2014  
 DWG. NO. **300-5**  
 SCALE: N.T.S.



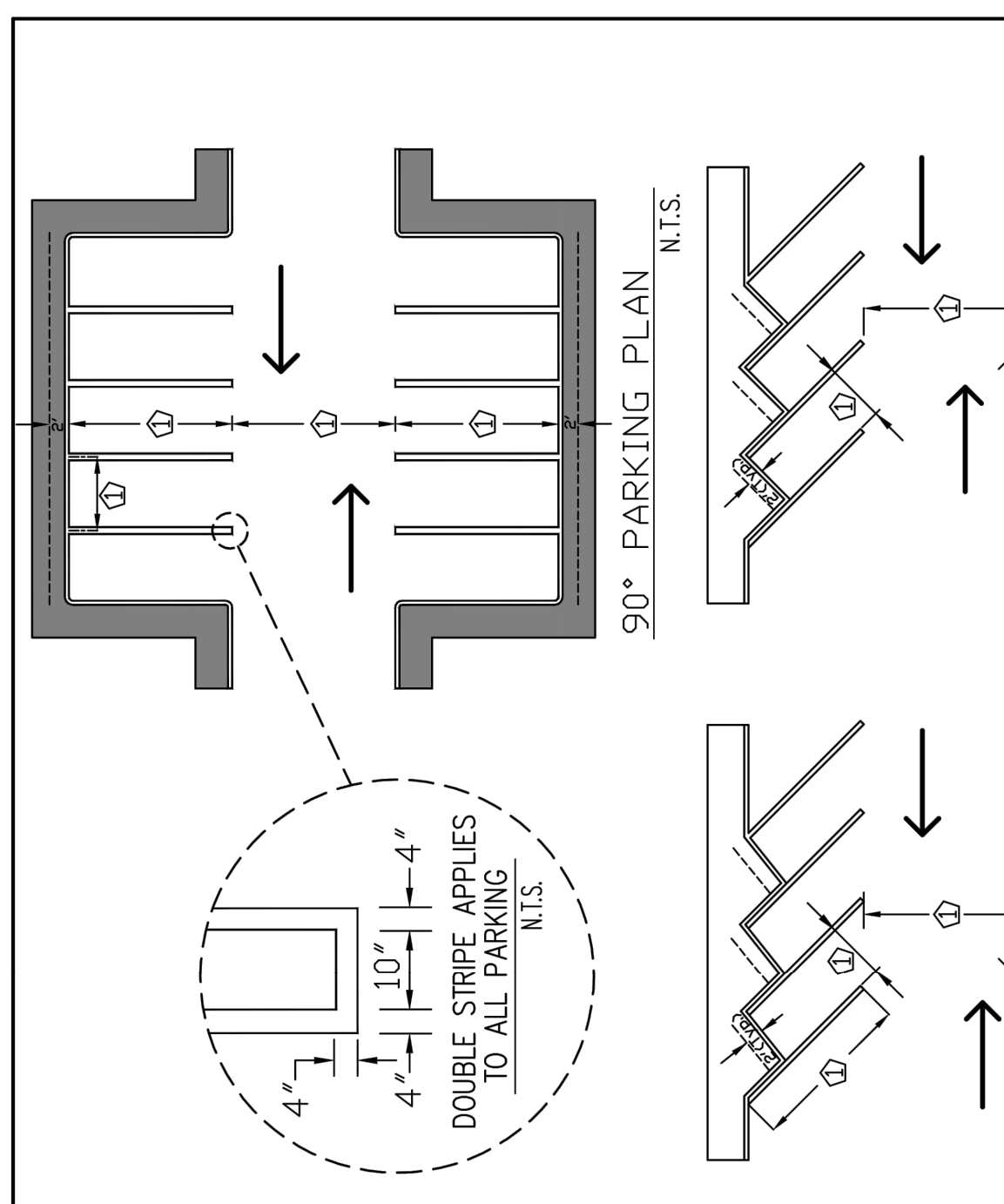
**Recommended Accessible Parking Space(s)** N.T.S.

FLS (553.5041)(5)(a) All spaces must be located on an accessible route no less than 44 inches wide so that users will not be compelled to walk or wheel behind parked cars except behind his or her own vehicle. (See FLS 553.5041(5)(e)(1) relating to existing parking facilities)

THIS TECHNICAL ASSISTANCE DOCUMENT IS INTENDED TO PROVIDE INFORMAL GUIDANCE AND DOES NOT CONSTITUTE A LEGAL INTERPRETATION OF STATUTORY OR REGULATORY CRITERIA.

REVISIONS BY	DATE	DESCRIPTION

**ENGINEERING STANDARDS 2016**  
 ENGINEERING DIVISION  
 CITY OF POMPAÑO BEACH  
 DATE: December, 2014  
 DWG. NO. **300-4**  
 SCALE: N.T.S.

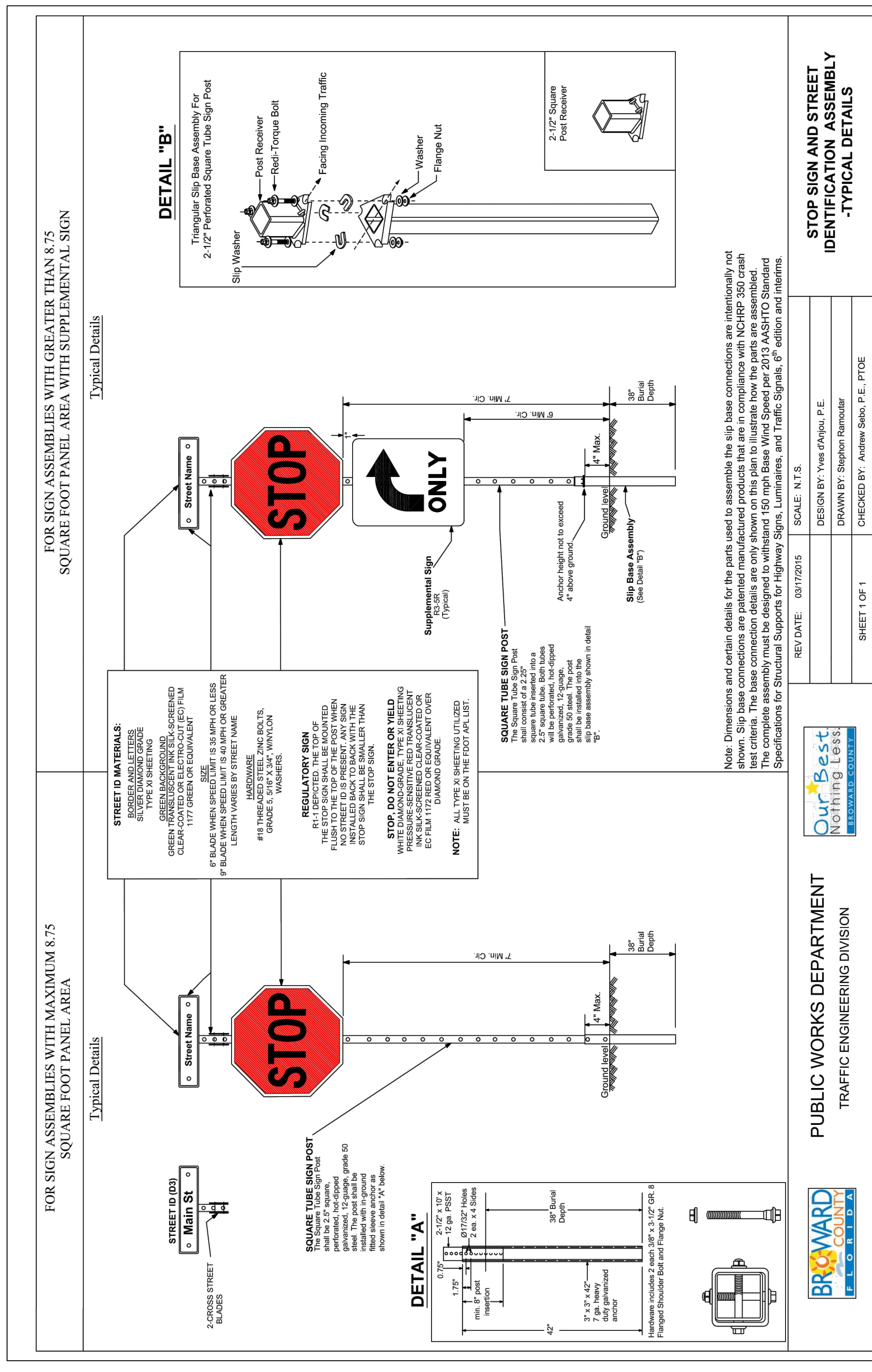


**Standard Parking Spaces** N.T.S.

**NOTES**  
 1 INDICATED DIMENSION BY LOCAL ZONING ORDINANCE.  
 2 CURBING APPLIES TO ALL PARKING.  
 3 EACH SPACE SHALL BE DESIGNATED BY FOUR (4) INCH WIDE VISIBLE STRIPING CONSISTING OF WHITE PAINT OR AS APPROVED BY THE CITY.

REVISIONS BY	DATE	DESCRIPTION

**ENGINEERING STANDARDS 2016**  
 ENGINEERING DIVISION  
 CITY OF POMPAÑO BEACH  
 DATE: December, 2014  
 DWG. NO. **300-3**  
 SCALE: N.T.S.



**PUBLIC WORKS DEPARTMENT**  
 TRAFFIC ENGINEERING DIVISION  
 SCALE: N.T.S.  
 REV/DATE: 03/17/2015  
 DESIGN BY: Yusef Youssef, P.E.  
 DRAWN BY: Stephen Hammar  
 CHECKED BY: Andrew Shaw, P.E., PTOE  
 SHEET 1 OF 1  
**OurBest Nothing Less**  
 RESIDENTIAL SERVICES

REV.	DATE	DESCRIPTION
1	05/20/16	REVISED PER CITY COMMENTS

DESIGN DELIVERABLE: PERMIT SUBMITTAL  
 ISSUE DATE: 07/14/2017  
 PROJECT NUMBER: 07020.16  
 DRAWN BY: PW  
 CHECKED BY: MG  
 Copyright © by SYNALOVSKI ROMANIKSAVE  
 All Rights Reserved.

ALL CONSTRUCTION AND MATERIALS WITHIN THE CITY OF POMPAÑO BEACH RIGHT OF WAY AND/OR CITY OWNED LAND SHALL CONFORM TO THE STANDARDS AND SPECIFICATIONS OF THE CITY OF POMPAÑO BEACH.  
 IF ANY OF THE GENERAL NOTES LISTED ABOVE ARE IN CONFLICT WITH THE CITY OF POMPAÑO BEACH, BROWARD COUNTY, FLORIDA DEPARTMENT OF TRANSPORTATION IT IS THE CONTRACTOR'S RESPONSIBILITY TO TIMELY NOTIFY THE CITY OF POMPAÑO BEACH OF SUCH CONFLICTS. HOWEVER, AT A MINIMUM THE MORE STRINGENT STANDARD SHALL CONTROL.