



Site Address	113 NE 1 AVENUE, POMPANO BEACH FL 33060	ID #	4842 35 08 0130
Property Owner	CITY OF POMPANO BEACH	Millage	1511
Mailing Address	100 W ATLANTIC BLVD POMPANO BEACH FL 33060	Use	80
Abbr Legal Description	RE-SUBDIVISION OF LOT 15 OF SUBDIVISION OF SEC 35 T 48S R 42E B-76 D LOT 9 S 25 OF E 100		

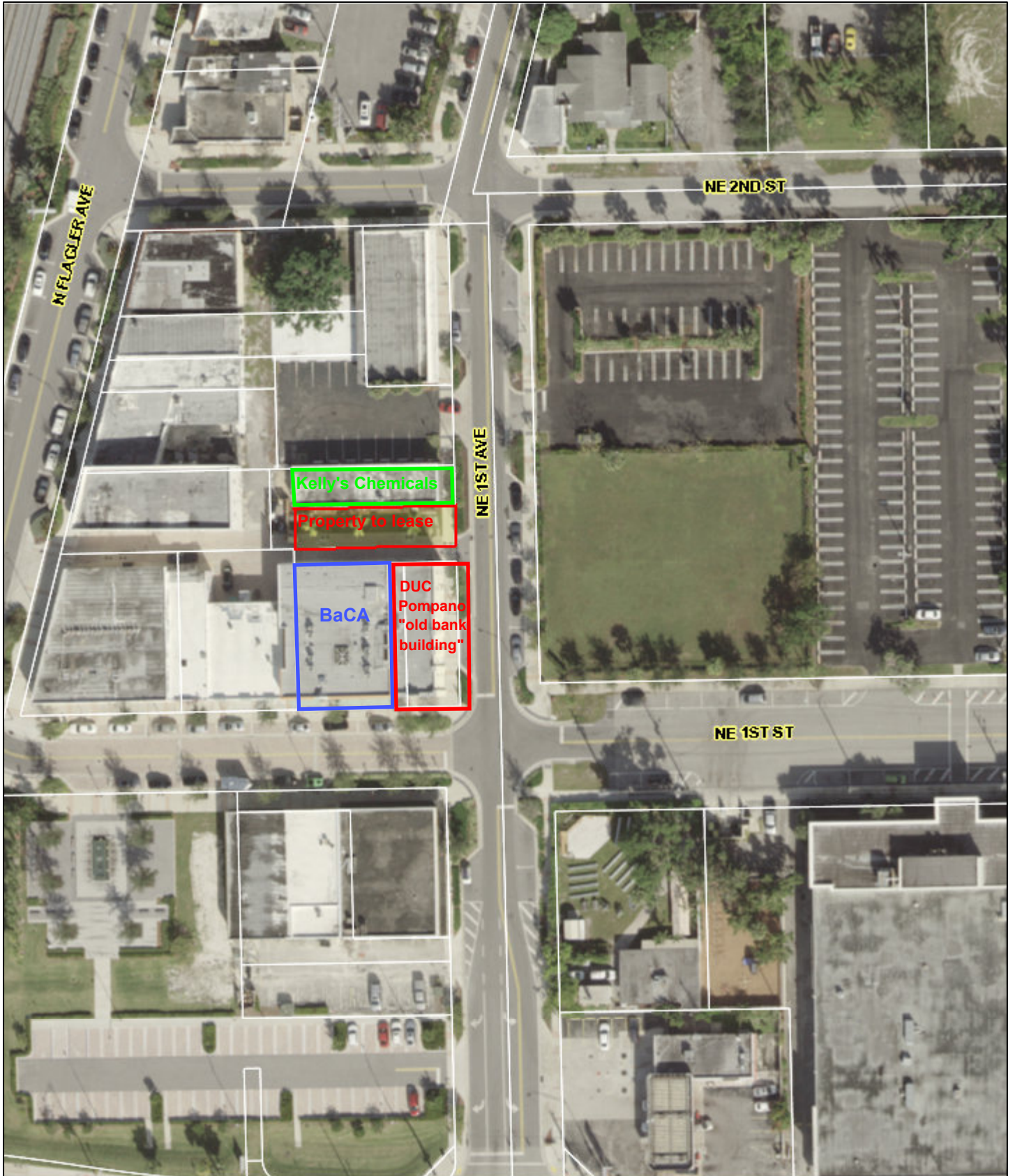
The just values displayed below were set in compliance with [Sec. 193.011](#), Fla. Stat., and include a reduction for costs of sale and other adjustments required by [Sec. 193.011\(8\)](#).

Property Assessment Values					
Year	Land	Building / Improvement	Just / Market Value	Assessed / SOH Value	Tax
2019	\$17,500		\$17,500	\$17,500	
2018	\$17,500		\$17,500	\$17,500	
2017	\$17,500		\$17,500	\$17,500	

2019 Exemptions and Taxable Values by Taxing Authority				
	County	School Board	Municipal	Independent
Just Value	\$17,500	\$17,500	\$17,500	\$17,500
Portability	0	0	0	0
Assessed/SOH	\$17,500	\$17,500	\$17,500	\$17,500
Homestead	0	0	0	0
Add. Homestead	0	0	0	0
Wid/Vet/Dis	0	0	0	0
Senior	0	0	0	0
Exempt Type 14	\$17,500	\$17,500	\$17,500	\$17,500
Taxable	0	0	0	0

Sales History				Land Calculations		
Date	Type	Price	Book/Page or CIN	Price	Factor	Type
3/3/1980	WD	\$100	8805 / 220	\$7.00	2,500	SF
				Adj. Bldg. S.F.		

Special Assessments								
Fire	Garb	Light	Drain	Impr	Safe	Storm	Clean	Misc
15								
X								
1								



March 5, 2019

