

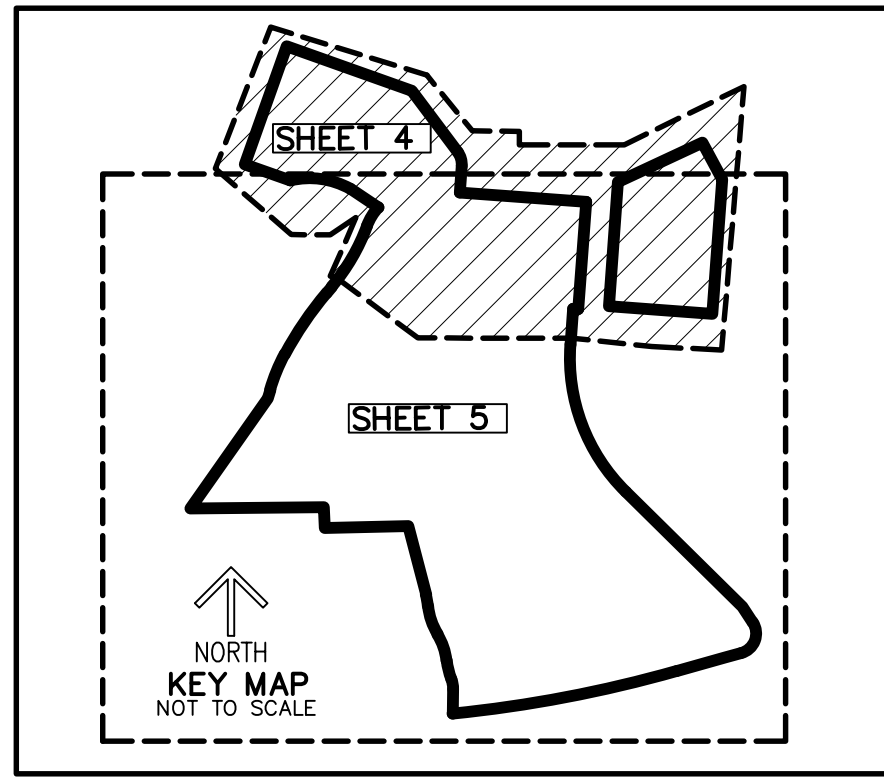
LEGEND

CONC. - CONCRETE
F.P.L.-FLORIDA POWER & LIGHT
FND. - FOUND
I.R./CAP - IRON ROD & CAP
L - ARC LENGTH
O.R.B. - OFFICIAL RECORD BOOK
P.B. - PLAT BOOK
P.O.B. - POINT OF BEGINNING
P.O.C. - POINT OF COMMENCEMENT
P.C.S. - PAGE(S)
P.R.M. - PERMANENT REFERENCE MONUMENT
PROP. - PROPOSED
R - RADIUS
R/W - RIGHT-OF-WAY
RGE. - RANGE
SEC - SECTION
SQ. FT. - SQUARE FEET
TWP. - TOWNSHIP
Δ - DELTA (CENTRAL ANGLE)
-OHE- - ELECTRICAL WIRES OVERHEAD
-FM- - FORCE MAIN
-W- - WATER MAIN
-IRR- - IRRIGATION LINE
-TEL- - PHONE OR FIBER OPTIC LINE
-STM- - STORM LINE
-SS- - SEWER LINE

SYMBOLS:

△ = HORIZONTAL CONTROL POINT
⊕ = BENCHMARK
☒ = TRASH CONTAINER
⊙ = UNIDENTIFIED HANDHOLE
⊞ = UNIDENTIFIED BOX
△ = NATURAL GAS MARKER
● = SIGN
⊙ = BOLLARD
⊙ = TRAFFIC HANDHOLE
⊞ = CROSSWALK SIGNAL
⊙ = MAST ARM / TRAFFIC LIGHT
⊙ = SET/FOUND BOUNDARY POINT
⊞ = FOUND CONCRETE MONUMENT
⊞ = FIBER OPTIC BOX
⊞ = FIBER OPTIC VAULT
⊞ = TELEPHONE SERVICE MANHOLE
⊞ = CABLE TV HANDHOLE
⊞ = CABLE TV BOX
⊞ = SEWER GATE VALVE
⊞ = SANITARY MANHOLE
⊞ = DRAINAGE MANHOLE
⊞ = YARD DRAIN
⊞ = AREA OF APPARENT PHYSICAL USE BY ADJOINING LANDS

⊞ = CATCH BASIN
⊞ = DRAINAGE PIPE END
⊞ = ELECTRIC SWITCH
⊞ = ELECTRIC HANDHOLE
⊞ = ELECTRIC VAULT
⊞ = ELECTRIC METER
⊞ = ELECTRIC BOX
⊞ = TRANSFORMER
⊞ = GROUND LIGHT
⊞ = LIGHT POLE
⊞ = CONCRETE POWER POLE
⊞ = WOOD POWER POLE
⊞ = GUY WIRE ANCHOR
⊞ = PUMP
⊞ = FIRE HYDRANT
⊞ = WATER GATE VALVE
⊞ = BACKFLOW PREVENTER
⊞ = IRRIGATION RISER/PEDASTAL
⊞ = IRRIGATION CONTROL VALVE
⊞ = WATER METER
⊞ = WELL
⊞ = WATER VALVE
⊞ = SECTION CORNER



*LEGEND ON PAGE 1

STRUCTURE TABLE	
STRUCTURE NAME:	DETAILS:
15151 N:685900.1750' E:925618.8300'	CATCH BASIN RIM: 6.39' B.O.S.: 2.09' N: 2.67' 18" C.M.P. S: 2.63' 18" C.M.P.
15152 N:685871.6390' E:925616.3810'	CATCH BASIN RIM: 7.29' B.O.S.: 2.43' N: 2.59' 18" C.M.P. S: 2.66' 18" C.M.P.
15168 N:686022.1440' E:925752.0290'	CATCH BASIN RIM: 6.17' B.O.S.: 2.54' E: 3.07' 18" C.M.P. W: 3.20' 18" C.M.P.
15165 N:686022.9840' E:925798.3500'	CATCH BASIN RIM: 6.35' B.O.S.: 3.19' N.E.: 3.29 18" C.M.P. W: 3.23' 18" C.M.P.
15172 N:686048.4260' E:925879.3280'	CATCH BASIN RIM: 6.59' B.O.S.: 3.55' W: 3.74' 18" R.C.P.
15113 N:686458.4030' E:925915.5690'	CATCH BASIN RIM: 6.46' INACCESSIBLE
15252 N:686463.3860' E:925868.4940'	CATCH BASIN RIM: 6.39' B.O.S.: 0.35' N: 0.60' 18" R.C.P. SE: 3.70' 24" R.C.P.
15256 N:686534.6280' E:925874.7490'	CATCH BASIN RIM: 6.31' B.O.S.: 4.47' S: 4.63' 18" R.C.P.
15177 N:685877.8320' E:926223.1650'	SANITARY MANHOLE RIM: 8.19' N: -3.17' 8" PVC S: -3.32' 8" PVC
15102 N:686118.0790' E:925978.6990'	SANITARY MANHOLE RIM: 8.41' N: -1.20' 8" PVC S: -1.39' 8" PVC E: 0.10' 8" PVC
15104 N:686138.9170' E:926041.5090'	SANITARY MANHOLE RIM: 9.04' W: 0.39' 8" PVC E: 0.43' 8" PVC
15111 N:686329.0920' E:925884.1270'	SANITARY MANHOLE RIM: 7.71' N: -0.96' 8" PVC S: -1.00' 8" PVC
15247 N:686578.8540' E:925903.4230'	SANITARY MANHOLE RIM: 8.43' N: 0.17' 8" PVC S: 0.14' 8" PVC
15260 N:685734.6720' E:926238.6480'	SANITARY MANHOLE RIM: 8.12' N: -3.82' 8" PVC E: -3.75' 8" PVC W: -3.74' 8" PVC
15161 N:685774.7320' E:926153.9970'	CATCH BASIN RIM: 7.49' B.O.S.: 3.30' S: 3.38' 15" R.C.P.

DRC
PZ23-12000017
11/20/2024

CAULFIELD & WHEELER, INC.
CIVIL ENGINEERING - LAND PLANNING
LANDSCAPE ARCHITECTURE - SURVEYING
7900 GLADES ROAD - SUITE 100
BOCA RATON, FLORIDA 33424
PHONE (561)-592-1991 / FAX (561)-750-1452

BOUNDARY SURVEY
FOR OAKS @ PALM AIRE

DATE 3-15-23
DRAWN BY RSE
F.B./ PG. ELEC
SCALE SHOWN

Digitally signed
by David Lindsey
Date: 2024.10.15
13:45:54 -0400
Adobe Acrobat
version:
2024.003.20180

OB # 10326
T.NO.
4
OF 5 SHEETS