

DESIGN SUMMARY

Top Line Recreation, Inc. is very pleased to present this proposal for consideration for the Pompano Beach Community Park located in Pompano Beach. BCI Burke Company, LLC has been providing recreational playground equipment for over 90 years and has developed the right mix of world-class capabilities to meet the initial and continuing needs of Head Of Public Works. We believe our proposal will meet or exceed your project's requirements and will deliver the greatest value to you.

The following is a summary of some of the key elements of our proposal:

- Project Name: Pompano Beach Community Park
- Project Number: 134-95346-3
- User Capacity: 221
- Age Groups: Ages 2-5 years, 5-12 years
- Dimensions: 189' 7" x 190' 1"
- Designer Name: John Uelmen

Top Line Recreation, Inc. has developed a custom playground configuration based on the requirements as they have been presented for the Pompano Beach Community Park playground project. Our custom design will provide a safe and affordable playground environment that is aesthetically pleasing, full of fun for all users and uniquely satisfies your specific requirements. In addition, proposal # 134-95346-3 has been designed with a focus on safety, and is fully compliant with ASTM F1487 and CPSC playground safety standards.

We invite you to review this proposal for the Pompano Beach Community Park playground project and to contact us with any questions that you may have.

Thank you in advance for giving us the opportunity to make this project a success.

BCI Burke Company, LLC

660 Van Dyne Road, Fond du Lac, WI 54936

Tel (920) 921-9220 Fax (920) 921-9566

www.bciburke.com



Date: 9/27/2016

Quote #6205

Accepted Approved Quotation,
Terms and ConditionsIn coordination with **Top Line Recreation, Inc.** Deltona, FL

Tel: (800-921-4509)

To: Harold Beard

City of Pompano Beach

1190 NE 3rd Ave

Pompano Beach, FL 33061

Signed: _____

Date: _____

Pompano Beach Community

Project Name: Park

Project Location: 2001 NE 10th Street

Pompano Beach, FL 33060

Prepared by	Estimated Ship Date	Payment Terms		
Jessica Westphal	4 weeks after receipt of order	Net 30 Days		
Item	Description	Unit Price	Quantity	Total
Equipment	BCI Burke Nucleus/Intensity Unit including 4 Bay Single Post Swing with Belt and Tot Seats, RopeVenture Vertex, Swift Twist Spinner, Comet II, (5) Benches and (5) Tables as shown on Proposal 134-95346-3	136,455.00	1	136,455.00
Discount	7% Discount per TCPN Contract R5199	(9,551.85)	1	(9,551.85)
Discount	Move With Us Grant	(41,912.15)	1	(41,912.15)
Drawings	FL Professional Engineer Sealed Drawings	1,500.00	1	1,500.00
Freight	Freight to deliver to Pompano Beach, FL 33060	6,195.00	1	6,195.00
Installation	Installation of Proposal 134-95346-3 & Container for storage. *Customer is Responsible for Site Security*	32,738.10	1	32,738.10
Permit	Permitting	1,190.48	1	1,190.48
Storage	Storage container for security	1,180.00	1	1,180.00
TOTAL:				\$ 127,794.58

Jessica Westphal

Sales Support Coordinator

Title: BCI Burke Company, LLC

Thank you for the opportunity to provide this quote.

We look forward to filling your park & playground needs in the months and years to come!



BCI Burke Company, LLC

"An ISO 9001:2008 and ISO 14001:2004 Certified Company"

660 Van Dyne Road - PO Box 549 - Fond du Lac, WI 54936-0549 - Phone (920) 921-0220 - Fax (920) 921-9566 - www.bciburke.com

Play that Moves You

TCPN Proposal #R5199-FL-11760

**134-95346-3**

September 08, 2016

2016 Pricing

Proposal Prepared for:

Harold Beard
Head Of Public Works
1190 NE 3rd Ave. Bldg B
Pompano Beach, FL 33060
Phone: 954.786.4031

Project Location:

Pompano Beach Community Park
2001 NE 10 St.
Pompano Beach, FL 33060

Proposal Prepared by:

Top Line Recreation, Inc.
2922 Howland Blvd
Deltona, FL 32725
Phone: 800-921-4509
Fax:
info@toplinerec.com

Vivian Figueroa
Phone: 386-789-4508
Fax: 888-909-0549
vivianf@toplinerec.com

Component No.	Description	Qty	Weight	Ext. Weight	Price	Ext. Price
Burke Basics						
550-0093	SINGLE POST SWING ASSEMBLY 5"...	2	220	440	\$978	\$1,956
550-0094	SINGLE POST SWING ADD-ON 5" OD	2	145	290	\$830	\$1,660
550-0100	TOT SEAT, 7' & 8' PAIR, STD ...	2	23	46	\$299	\$598
550-0112	BELT SEAT, 8' PAIR, STD CHAIN	2	20	40	\$164	\$328
560-0457	SWIFT TWIST SPINNER	1	52	52	\$1,033	\$1,033
560-0583	ROPEVENTURE VERTEX	1	1,340	1,340	\$15,000	\$15,000
560-0584	ROPEVENTURE LINK	1	38	38	\$2,000	\$2,000
560-2571	COMET II	1	149	149	\$1,600	\$1,600
560-2573	KIDFORCE SPINNER	2	43	86	\$646	\$1,292
580-0190	6' PVC TRADITIONAL BENCH W/BA...	5	115	575	\$477	\$2,385
580-0227	6' PVC CLASSIC PICNIC TABLE W...	5	223	1,115	\$1,135	\$5,675

List Price: \$33,527

Intensity

370-0001	AGILITY ARC	7	11	77	\$187	\$1,309
370-0002	PEP STEP	1	11	11	\$484	\$484
370-0008	WILD WEB ROPE CLIMBER	1	77	77	\$4,388	\$4,388
370-0009	HEALTHY HAMMOCK	2	6	12	\$846	\$1,692
370-0014	HYPER HELIX CLIMBER	1	74	74	\$982	\$982
370-0025	SPINNER, EXTREME CYCLONE	1	136	136	\$2,610	\$2,610
370-0027	LAUNCH PAD	1	9	9	\$216	\$216
370-0028	ENERGY DISC	1	112	112	\$1,627	\$1,627
370-0030	ATHLETIC ARCH 2-5	1	46	46	\$699	\$699
370-0031	POWER PIPES CLIMBER 2-5	1	33	33	\$466	\$466
370-0033	ODYSSEY POST LINK DOUBLE	1	78	78	\$729	\$729
370-0034	ODYSSEY POST LINK SINGLE	1	39	39	\$364	\$364
370-0714	DYNAMIC PAD CLIMBER, INTENSITY	1	142	142	\$1,369	\$1,369
370-0815	TWISTING TRAVERSE 2-5	1	100	100	\$1,502	\$1,502
370-0829	PLEXUS OVERHEAD	1	96	96	\$1,871	\$1,871
370-0830	PLEXUS HOLE CLIMBER	1	97	97	\$1,351	\$1,351
370-0831	PLEXUS RUNG CLIMBER	1	83	83	\$1,039	\$1,039
370-0832	PLEXUS TANGLE CLIMBER	1	89	89	\$1,039	\$1,039
370-0834	OVERHEAD POST ATTACHMENT	1	3	3	\$145	\$145
470-0101	DYNAMIC PAD	5	27	135	\$510	\$2,550
470-0102	SWIFT GLIDER	1	132	132	\$1,884	\$1,884
570-0688	PADDLE BALL RING PANEL	1	54	54	\$1,347	\$1,347
670-0097	INTENSITY CURRICULUM KIT	1	2	2	\$0	\$0

**134-95346-3**September 08, 2016
2016 Pricing

670-0405 CURVED POST 2 ASSEMBLY	1	55	55	\$840	\$840
---------------------------------	---	----	----	-------	-------

List Price: \$30,503

Nucleus

270-0001 OFFSET ENCLOSURE	4	30	120	\$296	\$1,184
270-0050 8" CLOSURE PLATE	4	10	40	\$106	\$424
270-0129 TRIANGLE PLATFORM	5	48	240	\$519	\$2,595
270-0130 SQUARE PLATFORM	2	106	212	\$926	\$1,852
270-0188 LONG BUCKLE BRIDGE W/GUARDRAIL...	1	316	316	\$3,583	\$3,583
270-0236 VIPER SLIDE HALF HEX PLATFORM	1	145	145	\$1,188	\$1,188
370-0382 FAN CLIMBER 40" - 48"	1	93	93	\$1,434	\$1,434
370-0467 24" TRANSITION STAIR W/BARRIER...	1	164	164	\$1,808	\$1,808
370-0552 CENTER MOUNT TWIST N' TURN CL...	1	113	113	\$997	\$997
370-0575 TWIST NET CLIMBER	1	57	57	\$2,494	\$2,494
370-0718 TRANSFER STATION, HANDRAIL 32"	1	162	162	\$1,448	\$1,448
370-0719 TRANSFER STATION, HANDRAIL 40"	1	199	199	\$1,485	\$1,485
370-0807 SPIDER, 96", DECK TO DECK	1	62	62	\$2,183	\$2,183
370-0812 CREST POINT CLIMBER	1	96	96	\$1,005	\$1,005
370-0850 DYNAMIC PAD CLIMBER 32"	1	149	149	\$1,369	\$1,369
470-0507 ROCK'N ROLL SLIDE, 40" - 48"	1	107	107	\$1,247	\$1,247
470-0592 VIPER III RL 32	1	323	323	\$4,119	\$4,119
470-0622 ROCK'N ROLL SLIDE, 64" - 72"	1	147	147	\$1,405	\$1,405
470-0670 ARA SQUARE SHADE CANOPY	2	383	766	\$5,599	\$11,198
470-0673 SINGLE POST SHADEPLAY 15' X 1...	2	246	492	\$4,618	\$9,236
470-0674 SINGLE POST SHADEPLAY 12' X 1...	1	194	194	\$4,157	\$4,157
570-0394 PIPE WALL	2	36	72	\$561	\$1,122
570-0620 BURKE MART PANEL BELOW PLATFO...	1	54	54	\$649	\$649
570-1547 CHIMES PANEL	1	59	59	\$971	\$971
600-0104 NPPS SUPERVISION SAFETY KIT	1	3	3	\$0	\$0
670-0098 MODULAR HARDWARE, NUCLEUS	1	5	5	\$0	\$0
670-0099 INSTALLATION KIT, INTENSITY	1	2	2	\$0	\$0
670-0103 MAINTENANCE KIT, INTENSITY	1	0	0	\$0	\$0
670-0161 POST, SWAGED ROOF 5" OD X 171"	4	90	360	\$363	\$1,452
670-0162 POST, SWAGED ROOF 5" OD X 197"	4	103	412	\$425	\$1,700
670-0393 MONSTER POST ASSEMBLY 32"	1	35	35	\$274	\$274
670-0394 ROOF POST 5" OD X 7GA X 167 1...	1	140	140	\$572	\$572
670-0395 ROOF POST 5" OD X 7 GA X 188 ...	1	159	159	\$623	\$623
670-0396 ROOF POST 5" OD X 7GA X 207 1...	1	161	161	\$674	\$674
675-0001 ALUM POST ASSY 5" OD X 91"	3	17	51	\$243	\$729
675-0002 ALUM POST ASSY 5" OD X 107"	3	20	60	\$271	\$813
675-0150 ALUM POST ASSY 5" OD X 80"	1	16	16	\$226	\$226
675-0165 ALUM POST ASSY 5" OD X 123"	2	23	46	\$337	\$674
675-0166 ALUM POST ASSY 5" OD X 139"	7	26	182	\$353	\$2,471
675-0167 ALUM POST ASSY 5" OD X 147"	8	27	216	\$383	\$3,064

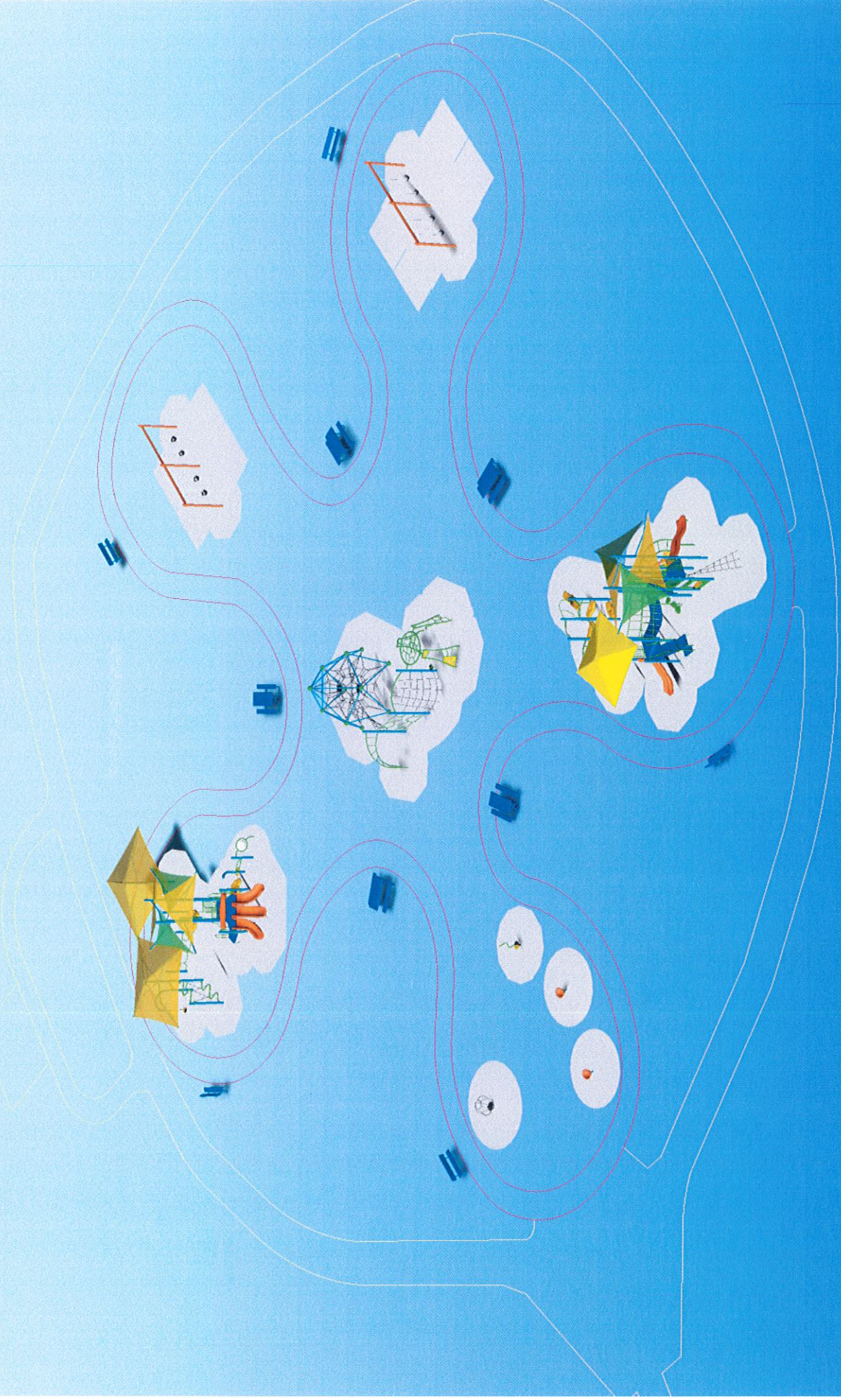
List Price: \$72,425

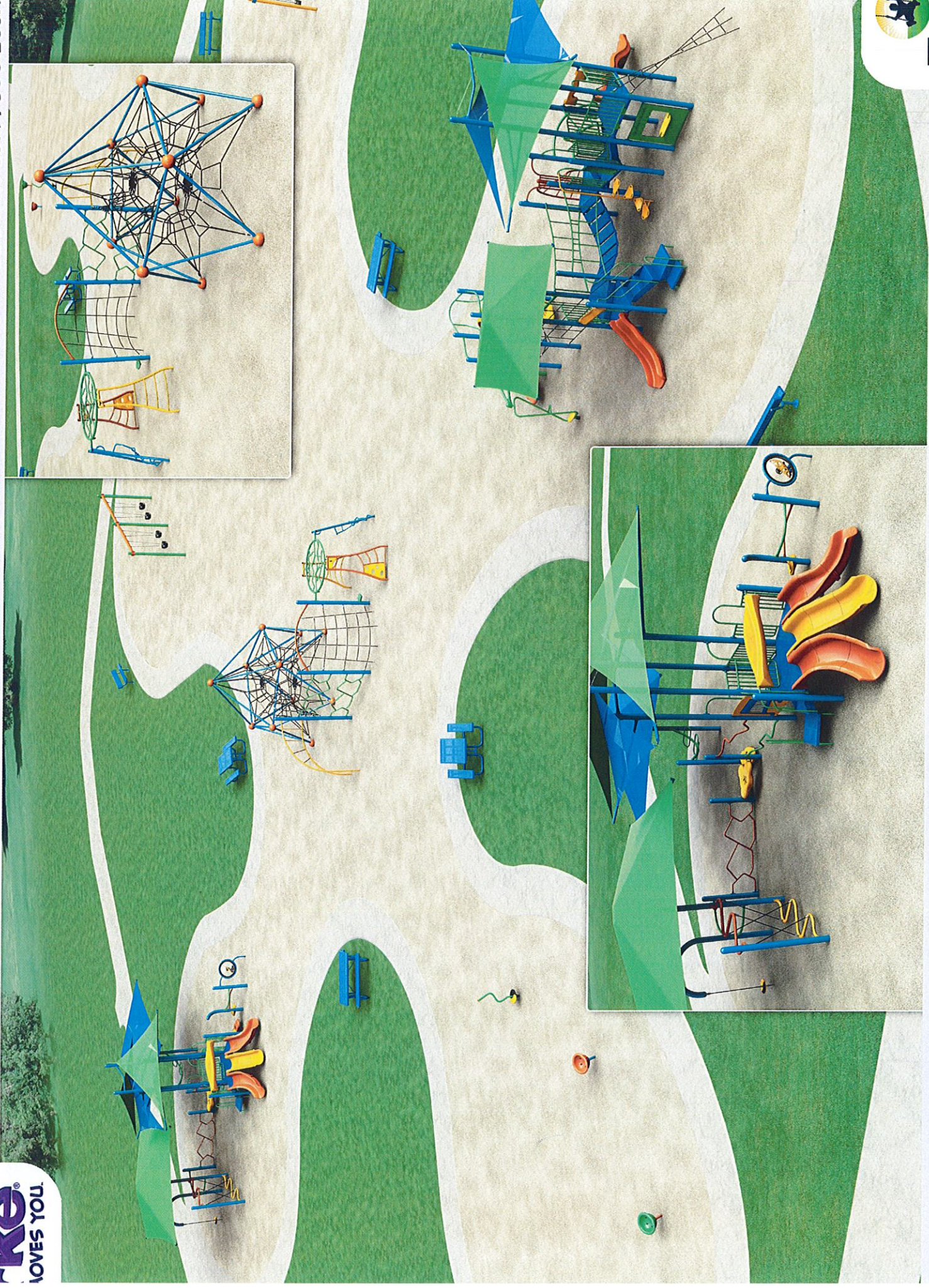
Total User Capacity:	221
Total Weight:	12,093 lbs.
With Packaging (+15%):	13,907 lbs.
Total Price:	\$136,455

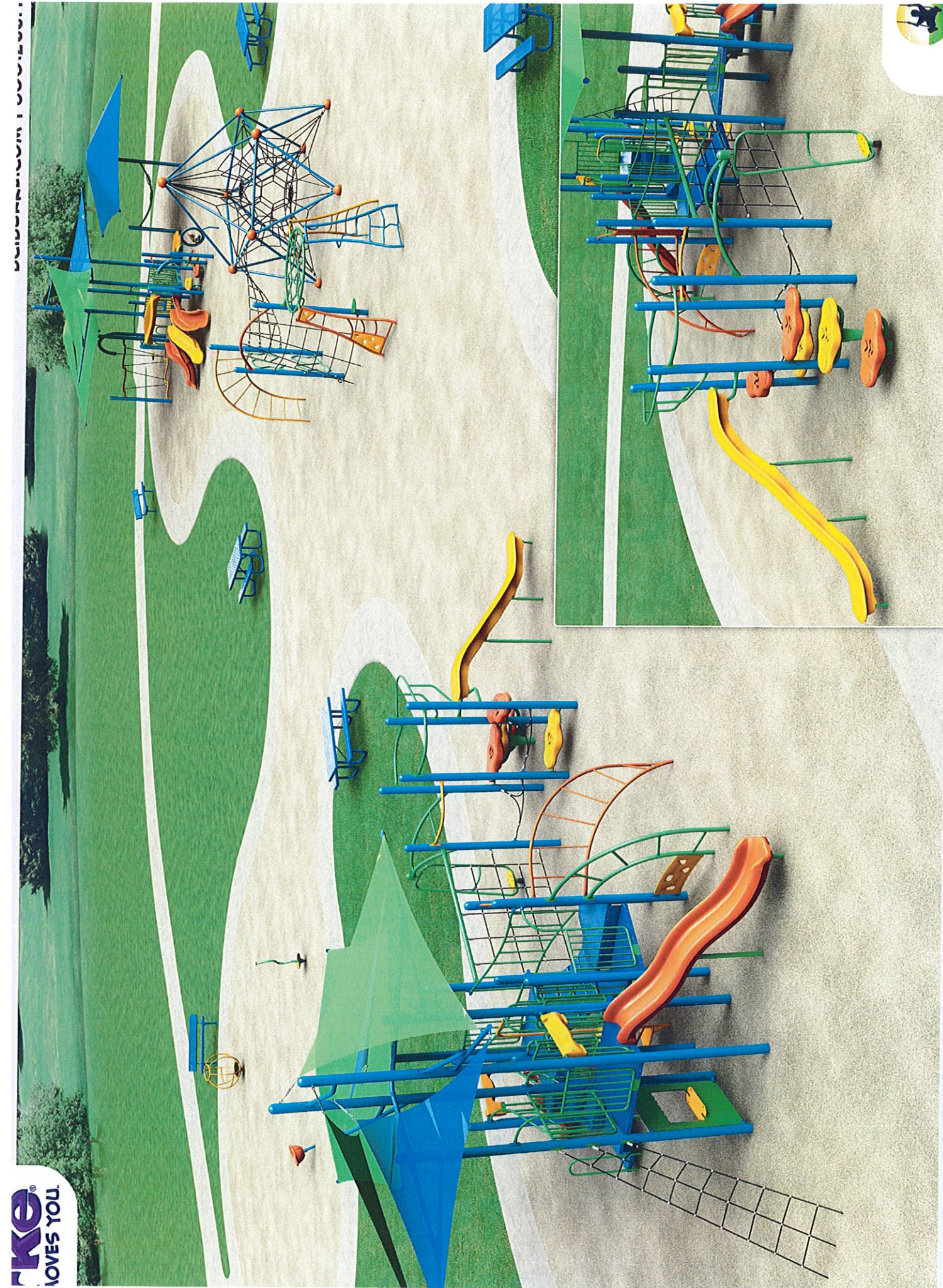
Proposal # 134-95346-3

**Pompano Beach Community Park
Top Line Recreation, Inc.**

Burke



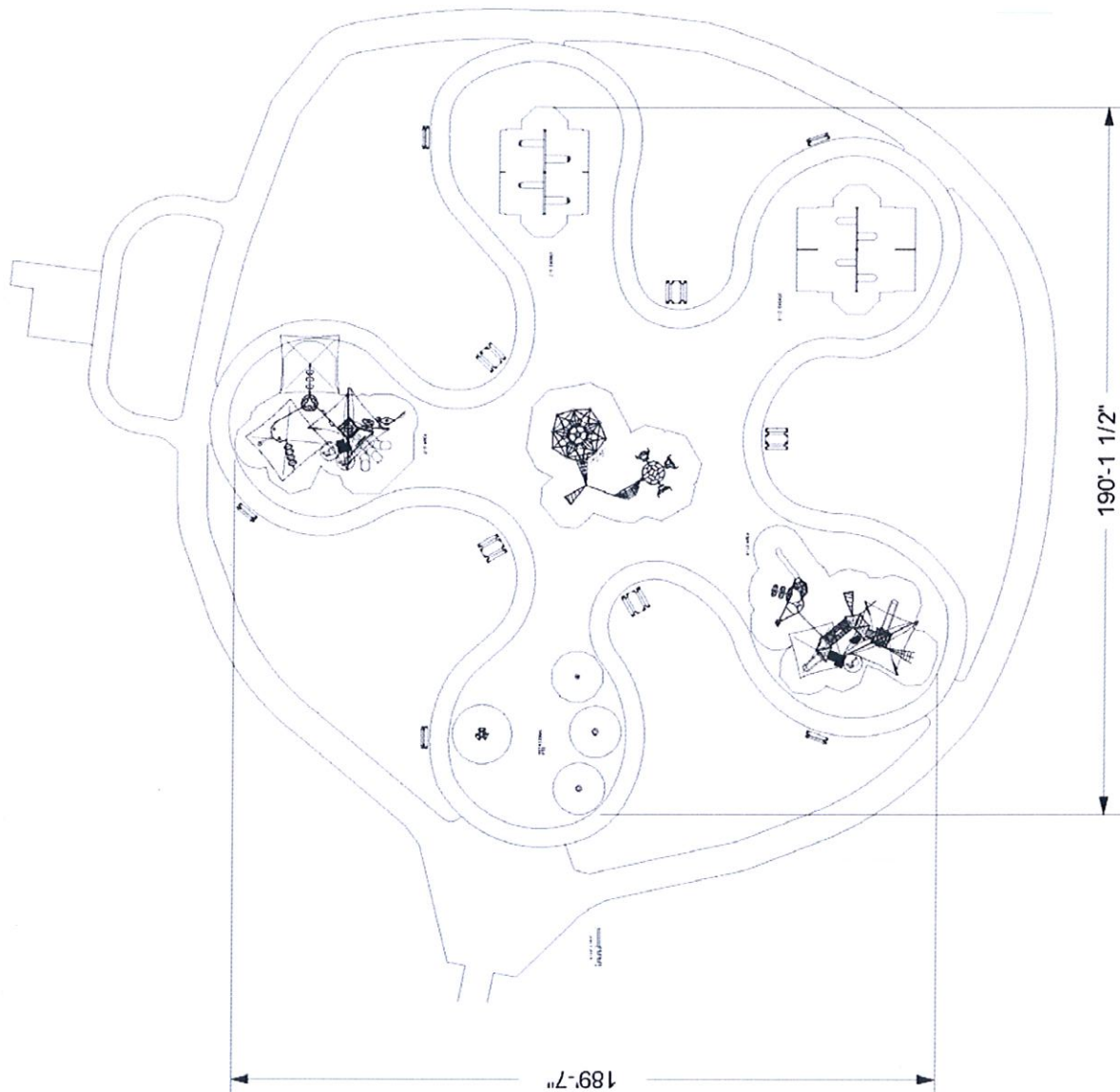




SERIES: Basics, Intensity, Nucleus
SITE PLAN
DRAWN BY: John Uelmen

Pompano Beach Community Park
2001 NE 10 St.
Pompano Beach, FL 33060

Top Line Recreation, Inc.
134-95346-3



INFORMATION
MINIMUM FALL ZONE
SURFACED WITH
RESILIENT MATERIAL
AREA

6144 SQ.FT.

PERIMETER

940 FT.

STRUCTURE SIZE

189' 7" x 190' 1"

STRUCTURE IS DESIGNED
FOR CHILDREN AGES:

- ☐ 6-23 MONTH OLDS
- ☒ 2-5 YEAR OLDS
- ☒ 5-12 YEAR OLDS
- ☐ 13+ YEAR OLDS



The play components identified in this plan are IPEMA certified. The use and layout of these components conform to the requirements of ASTM F1487. To verify product certification, visit www.ipema.org

The space requirements shown here are to ASTM standards. Requirements for other standards may be different.

The use and layout of play components identified in this plan conform to the CPSC guidelines. U.S. CPSC recommends the separation of age groups in playground layouts.

WARNING!

ACCESSIBLE SAFETY SURFACING MATERIAL IS REQUIRED BENEATH AND AROUND THIS EQUIPMENT.
FOR SLIDE FALL ZONE SURFACING AREA SEE CPSC's Handbook for Public Playground Safety.
PLATFORM HEIGHTS ARE IN INCHES ABOVE RESILIENT MATERIAL.

ADA ACCESSIBILITY GUIDELINE (ADAAG CONFORMANCE)

NUMBER OF PLAY EVENTS	55	
NUMBER OF ELEVATED PLAY EVENTS	11	
NUMBER OF ELEVATED PLAY EVENTS ACCESSIBLE BY RAMP	PROVIDED 0	RECD. 0
NUMBER OF ELEVATED PLAY EVENTS ACCESSIBLE BY TRANSFER SYSTEM	PROVIDED 11	RECD. 6
NUMBER OF ELEVATED PLAY EVENTS ACCESSIBLE BY RAMP OR TRANSFER SYSTEM	PROVIDED 44	RECD. 4
NUMBER OF TYPES OF GROUND LEVEL PLAY EVENTS	PROVIDED 19	RECD. 3

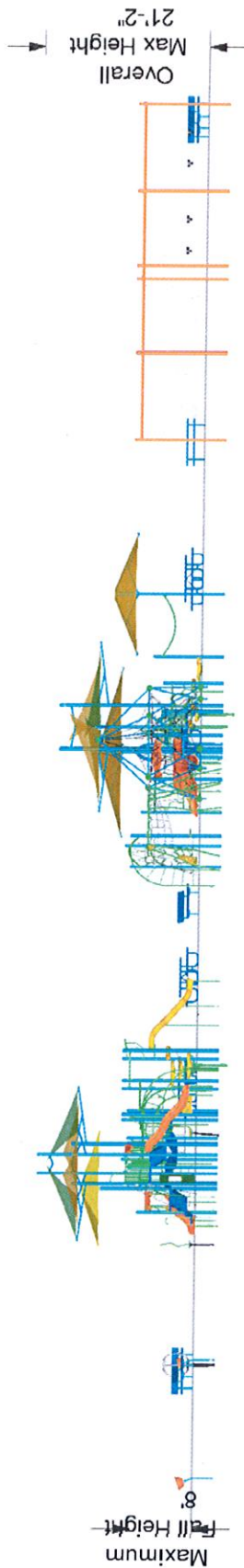


SERIES: Basics, Intensity, Nucleus
ELEVATION PLAN
DRAWN BY: John Uelmen

Pompano Beach Community Park
2001 NE 10 St.
Pompano Beach, FL 33060

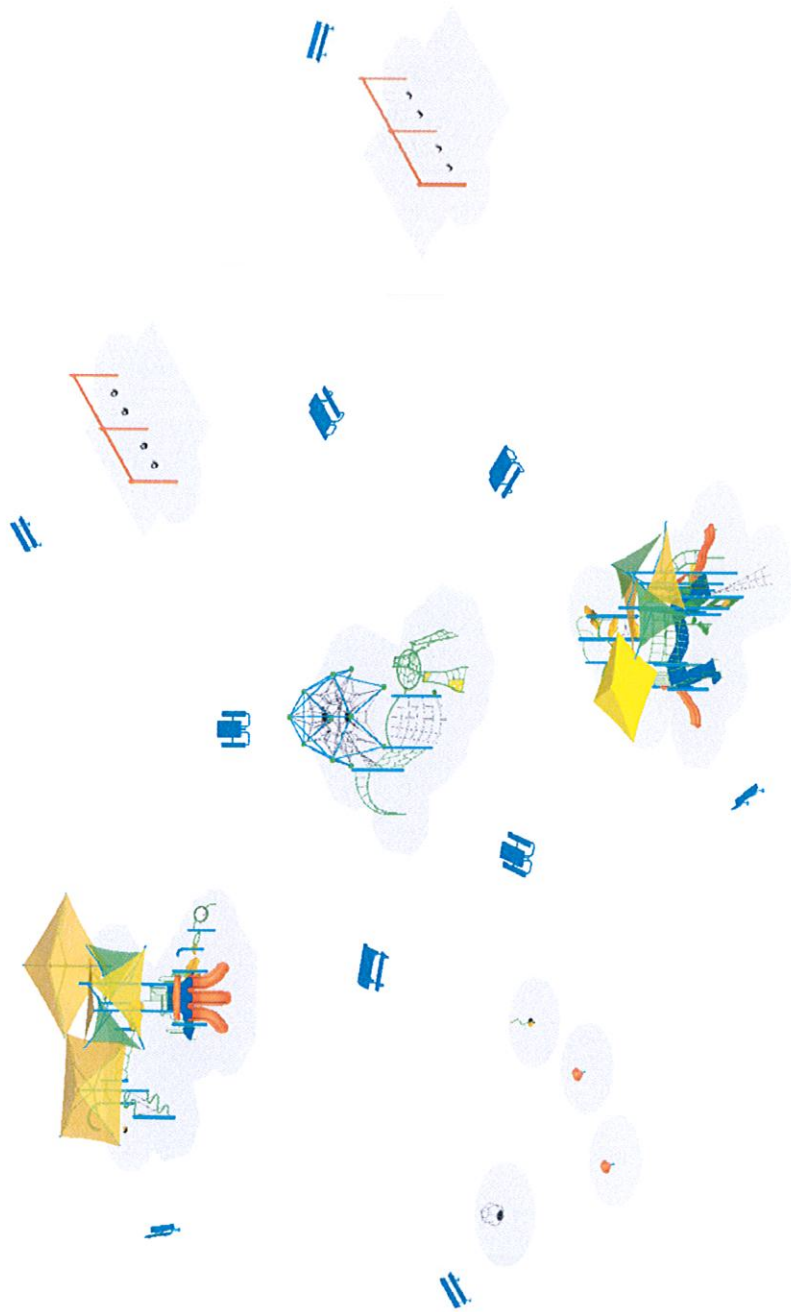
September 08, 2016
Top Line Recreation, Inc.
134-95346-3

BCI Burke Company, LLC PO Box 549 Fond du Lac, Wisconsin 54936-0549 Telephone 920-921-9220



Vertex Fall Height:
ASTM 7' 9"
CPSC 14' 3"

The protective surfacing for this design must accommodate the critical fall height.



Burke

September 08, 2016

SERIES: Basics, Intensity, Nucleus
ISOMETRIC PLAN
DRAWN BY: John Uelmen

Pompano Beach Community Park
2001 NE 10 St.
Pompano Beach, FL 33060

Top Line Recreation, Inc.
134-95346-3

BCI Burke Company, LLC PO Box 549 Fond du Lac, Wisconsin 54936-0549 Telephone 920-921-9220



Proposal # 134-95346-3

September 08, 2016

2016 Pricing

Proposal Prepared for:

Harold Beard
Head Of Public Works
1190 NE 3rd Ave. Bldg B
Pompano Beach, FL 33060
Phone: 954.786.4031

Project Location:

Pompano Beach Community Park
2001 NE 10 St.
Pompano Beach, FL 33060

Proposal Prepared by:

Top Line Recreation, Inc.
2922 Howland Blvd
Deltona, FL 32725
Phone: 800-921-4509
Fax:
info@toplinerec.com

Vivian Figueroa
Phone: 386-789-4508
Fax: 888-909-0549
vivianf@toplinerec.com

Component No.	Description	Qty.	User Cap.	Ext. User Cap.	Weight	Ext. Weight
Burke Basics						
550-0093	SINGLE POST SWING ASSEMBLY 5"...	2	2	4	220	440
550-0094	SINGLE POST SWING ADD-ON 5" OD	2	2	4	145	290
550-0100	TOT SEAT, 7' & 8' PAIR, STD ...	2	0	0	23	46
550-0112	BELT SEAT, 8' PAIR, STD CHAIN	2	0	0	20	40
560-0457	SWIFT TWIST SPINNER	1	1	1	52	52
560-0583	ROPEVENTURE VERTEX	1	25	25	1,340	1,340
560-0584	ROPEVENTURE LINK	1	3	3	38	38
560-2571	COMET II	1	6	6	149	149
560-2573	KIDFORCE SPINNER	2	1	2	43	86
580-0190	6' PVC TRADITIONAL BENCH W/BA...	5	0	0	115	575
580-0227	6' PVC CLASSIC PICNIC TABLE W...	5	0	0	223	1,115
Intensity						
370-0001	AGILITY ARC	7	1	7	11	77
370-0002	PEP STEP	1	1	1	11	11
370-0008	WILD WEB ROPE CLIMBER	1	6	6	77	77
370-0009	HEALTHY HAMMOCK	2	1	2	6	12
370-0014	HYPER HELIX CLIMBER	1	6	6	74	74
370-0025	SPINNER, EXTREME CYCLONE	1	3	3	136	136
370-0027	LAUNCH PAD	1	1	1	9	9
370-0028	ENERGY DISC	1	1	1	112	112
370-0030	ATHLETIC ARCH 2-5	1	3	3	46	46
370-0031	POWER PIPES CLIMBER 2-5	1	6	6	33	33
370-0033	ODYSSEY POST LINK DOUBLE	1	4	4	78	78
370-0034	ODYSSEY POST LINK SINGLE	1	2	2	39	39
370-0714	DYNAMIC PAD CLIMBER, INTENSITY	1	3	3	142	142
370-0815	TWISTING TRAVERSE 2-5	1	5	5	100	100
370-0829	PLEXUS OVERHEAD	1	14	14	96	96
370-0830	PLEXUS HOLE CLIMBER	1	2	2	97	97
370-0831	PLEXUS RUNG CLIMBER	1	2	2	83	83
370-0832	PLEXUS TANGLE CLIMBER	1	2	2	89	89
370-0834	OVERHEAD POST ATTACHMENT	1	0	0	3	3
470-0101	DYNAMIC PAD	5	2	10	27	135
470-0102	SWIFT GLIDER	1	3	3	132	132
570-0688	PADDLE BALL RING PANEL	1	2	2	54	54
670-0097	INTENSITY CURRICULUM KIT	1	0	0	2	2
670-0405	CURVED POST 2 ASSEMBLY	1	0	0	55	55



Proposal # 134-95346-3

September 08, 2016

2016 Pricing

Nucleus

270-0001	OFFSET ENCLOSURE	4	1	4	30	120
270-0050	8" CLOSURE PLATE	4	0	0	10	40
270-0129	TRIANGLE PLATFORM	5	2	10	48	240
270-0130	SQUARE PLATFORM	2	6	12	106	212
270-0188	LONG BUCKLE BRIDGE W/GUARDRAIL...	1	10	10	316	316
270-0236	VIPER SLIDE HALF HEX PLATFORM	1	6	6	145	145
370-0382	FAN CLIMBER 40" - 48"	1	3	3	93	93
370-0467	24" TRANSITION STAIR W/BARRIER...	1	2	2	164	164
370-0552	CENTER MOUNT TWIST N' TURN CL...	1	5	5	113	113
370-0575	TWIST NET CLIMBER	1	3	3	57	57
370-0718	TRANSFER STATION, HANDRAIL 32"	1	4	4	162	162
370-0719	TRANSFER STATION, HANDRAIL 40"	1	5	5	199	199
370-0807	SPIDER, 96", DECK TO DECK	1	4	4	62	62
370-0812	CREST POINT CLIMBER	1	4	4	96	96
370-0850	DYNAMIC PAD CLIMBER 32"	1	2	2	149	149
470-0507	ROCK'N ROLL SLIDE, 40" - 48"	1	1	1	107	107
470-0592	VIPER III RL 32	1	6	6	323	323
470-0622	ROCK'N ROLL SLIDE, 64" - 72"	1	2	2	147	147
470-0670	ARA SQUARE SHADE CANOPY	2	0	0	383	766
470-0673	SINGLE POST SHADEPLAY 15' X 1...	2	0	0	246	492
470-0674	SINGLE POST SHADEPLAY 12' X 1...	1	0	0	194	194
570-0394	PIPE WALL	2	0	0	36	72
570-0620	BURKE MART PANEL BELOW PLATFO...	1	4	4	54	54
570-1547	CHIMES PANEL	1	4	4	59	59
600-0104	NPPS SUPERVISION SAFETY KIT	1	0	0	3	3
670-0098	MODULAR HARDWARE, NUCLEUS	1	0	0	5	5
670-0099	INSTALLATION KIT, INTENSITY	1	0	0	2	2
670-0103	MAINTENANCE KIT, INTENSITY	1	0	0	0	0
670-0161	POST, SWAGED ROOF 5" OD X 171"	4	0	0	90	360
670-0162	POST, SWAGED ROOF 5" OD X 197"	4	0	0	103	412
670-0393	MONSTER POST ASSEMBLY 32"	1	0	0	35	35
670-0394	ROOF POST 5" OD X 7GA X 167 1...	1	0	0	140	140
670-0395	ROOF POST 5" OD X 7 GA X 188 ...	1	0	0	159	159
670-0396	ROOF POST 5" OD X 7GA X 207 1...	1	0	0	161	161
675-0001	ALUM POST ASSY 5" OD X 91"	3	0	0	17	51
675-0002	ALUM POST ASSY 5" OD X 107"	3	0	0	20	60
675-0150	ALUM POST ASSY 5" OD X 80"	1	0	0	16	16
675-0165	ALUM POST ASSY 5" OD X 123"	2	0	0	23	46
675-0166	ALUM POST ASSY 5" OD X 139"	7	0	0	26	182
675-0167	ALUM POST ASSY 5" OD X 147"	8	0	0	27	216

Total User Capacity: 221

Total Weight: 12,093 lbs.

Total Price: \$136,455

Information is relative to the Sep 8 2016 4:35AM database.

Special Notes:

Prices do not include freight, unloading, material storage, site excavation/preparation, removal of existing equipment, removal of excess soil from footing holes, site security, safety surfacing, installation, or sales tax (if applicable). Prices are based on standard colors per CURRENT YEAR BCI Burke Catalog. Custom colors, where available, would be an extra charge. **Pricing is valid for 45 days from the date of this proposal.**



Proposal # 134-95346-3

September 08, 2016

2016 Pricing

Selected Color List

Color Group	Color	
<i>Phase 1</i>		
Platform	Blue	
Accessory	Lime	
Intensity/Rocky Mountain	Yellow	
Post	Sky	
Kore Konnect	Sky	
1 Color Extruded/Flat	Yellow	
Rotomolded	Orange	
2 Color Extruded/Flat (outer)	Lime	
2 Color Extruded/Flat (inner)	Black	
Canopy	Yellow	
<i>Phase 2</i>		
Accessory	Lime	
Post	Sky	
Intensity/Rocky Mountain	Yellow	
Kore Konnect	Sky	
Platform	Blue	
Rotomolded	Orange	
Chimes/Sprocket Main Panel & Cruiser Seat Backs	Gray	
Chimes Note/Sprocket Overlay & Cruiser Side Panels	Blue	
1 Color Extruded/Flat	Yellow	
Canopy	Yellow	
<i>Phase 3</i>		
Accessory	Lime	
Kore Konnect	Sky	
Post	Sky	
1 Color Extruded/Flat	Yellow	
2 Color Extruded/Flat (outer)	Lime	
2 Color Extruded/Flat (inner)	Black	
<i>Phase 4</i>		
Contemporary Swing Fittings	Orange	
Rotomolded	Orange	
Post	Sky	
Accessory	Lime	
1 Color Extruded/Flat	Yellow	
Table/Bench	Blue	
Legs	Blue	
Table/Bench Legs	Sky	

The colors listed above reflect the main colors selected. This proposal may contain individual colors that have overridden the main colors. These overridden colors are *not* contained in this list.

TESTIMONIALS

"Service, Safety, Quality. Three words I would use to describe the people, business model, and overall organizational standards that inspires the BCI Burke Company. Every organization has a unique set of challenges and goals when it comes to building an educational environment - and from our experience, BCI Burke came to the table ready to work with us as partners to meet those challenges and goals head on.

We chose to work with BCI Burke because we needed a reliable company that would be able to provide nothing less than the highest quality product with our own time limitations. As with most other businesses, we did not have the luxury of making an investment into a project of this magnitude and not feel 100% certain that we had gotten the very best of our dollar. We also had to assure our stakeholders that we would see that investment last the test of time.

BCI Burke offered us superb and consistent customer service, the ability to achieve our goal on a fast timetable, and the confidence that our playground is genuinely the very best in design and safety. This is something that we will showcase in our school for many years to come.

After working with the company, I know personally they are committed to go the extra mile to satisfy your needs. BCI Burke is a master in their field but also provide the customer with an intuitive understanding of service".

Angela H. Brunini
Principal
St. Anthony Catholic School

"I am writing to tell you how much I enjoyed and appreciated working with your local representative...Through the years, I have worked with a number of playground companies, but never with anyone with the professionalism, commitment and follow-through of (your Burke Rep). We are all so excited about our children having the opportunity to play on your wonderful equipment; of course, we want everything! We are so impressed with the many, many possible designs. Thank you for the quality of your equipment and your local representatives."

Nancy Emerson
Director
The Children's Center
Dallas, TX

BCI BURKE GENERATIONS WARRANTY®

The Longest and Strongest Warranty in the Industry

BCI Burke Company, LLC ("Burke") warrants that all standard products are warranted to be free from defects in materials and workmanship, under normal use and service, for a period of one (1) year from the date of invoice.

We stand behind our products.

In addition, the following products are warranted, under normal use and service from the date of invoice as follows:

- One Hundred (100) Year Limited Warranty on aluminum and steel upright posts (including Intensity®, Voltage®, Nucleus® and Little Buddies®) against structural failure due to corrosion, deterioration or workmanship.
- One Hundred (100) Year Limited Warranty on KoreKonnnect® clamps against structural failure due to corrosion, deterioration or workmanship.
- One Hundred (100) Year Limited Warranty on Hardware (nuts, bolts, washers).
- One Hundred (100) Year Limited Warranty on bolt-through fastening and clamp systems (Voltage®, Intensity®, Nucleus® and Little Buddies®).
- Twenty-Five (25) Year Limited Warranty on spring assemblies and aluminum cast animals.
- Fifteen (15) Year Limited Warranty on main structure platforms and decks, metal roofs, table tops, bench tops, railings, loops and rungs.
- Fifteen (15) Year Limited Warranty on all plastic components including StoneBorders against structural failure due to materials or workmanship.
- Ten (10) Year Limited Warranty on ShadePlay Canopies fabric, threads, and cables against degradation, cracking or material breakdown resulting from ultra-violet exposure, natural deterioration or manufacturing defects. This warranty is limited to the design loads as stated in the specifications.
- Ten (10) Year Limited Warranty on NaturePlay® Boulders and GFRC products against structural failure due to natural deterioration or workmanship. Natural wear, which may occur with any concrete product with age, is excluded from this warranty.
- Ten (10) Year Limited Warranty on Full Color Custom Signage against manufacturing defects that cause delamination or degradation of the sign. Full Color Custom Signs also carry a two (2) year warranty against premature fading of the print and graphics on the signs.
- Five (5) Year Limited Warranty on Intensity® and RopeVenture™ cables against premature wear due to natural deterioration or manufacturing defects. Determination of premature wear will be at the manufacturer's discretion.
- Five (5) Year Limited Warranty on swing seats and hangers; Kid Koaster® Trolleys and other moving parts against structural failure due to materials or workmanship.
- Three (3) Year Limited Warranty on electronic panel speakers, sound chips and circuit boards against electronic failure caused by manufacturing defects.

The warranty stated above is valid only if the equipment is erected in conformity with the layout plan and/or installation instructions furnished by BCI Burke Company, LLC using approved parts; have been maintained and inspected in accordance with BCI Burke Company, LLC instructions. Burke's liability and your exclusive remedy hereunder will be limited to repair or replacement of those parts found in Burke's reasonable judgment to be defective. Any claim made within the above stated warranty periods must be made promptly after discovery of the defect. A part is covered only for the original warranty period of the applicable part. Replacement parts carry the applicable warranty from the date of shipment of the replacement from Burke. After the expiration of the warranty period, you must pay for all parts, transportation and service charges.

Burke reserves the right to accept or reject any claim in whole or in part. Burke will not accept the return of any product without its prior written approval. Burke will assume transportation charges for shipment of the returned product if it is returned in strict compliance with Burke's written instructions.

THE FOREGOING WARRANTIES ARE EXCLUSIVE AND IN LIEU OF ANY OTHER WARRANTY, EXPRESS OR IMPLIED, INCLUDING BUT NOT LIMITED TO ANY IMPLIED WARRANTY OR MERCHANTABILITY OR FITNESS FOR A PARTICULAR PURPOSE. IF THE FOREGOING DISCLAIMER OF ADDITIONAL WARRANTIES IS NOT GIVEN FULL FORCE AND EFFECT, ANY RESULTING ADDITIONAL WARRANTY SHALL BE LIMITED IN DURATION TO THE EXPRESS WARRANTIES AND BE OTHERWISE SUBJECT TO AND LIMITED BY THE TERMS OF BURKE'S PRODUCT WARRANTY. SOME STATES DO NOT ALLOW THE EXCLUSION OF CERTAIN IMPLIED WARRANTIES, SO THE ABOVE LIMITATION MAY NOT APPLY TO YOU.

Warranty Exclusions: The above stated warranties do not cover: "cosmetic" defects, such as scratches, dents, marring, or fading; damage due to incorrect installation, vandalism, misuse, accident, wear and tear from normal use, exposure to extreme weather; immersion in salt or chlorine water, unauthorized repair or modification, abnormal use, lack of maintenance, or other cause not within Burke's control; and

Limitation of Remedies: Burke is not liable for consequential or incidental damages, including but not limited to labor costs or lost profits resulting from the use of or inability to use the products or from the products being incorporated in or becoming a component of any other product. If, after a reasonable number of repeated efforts, Burke is unable to repair or replace a defective or nonconforming product, Burke shall have the option to accept return of the product, or part thereof, if such does not substantially impair its value, and return the purchase price as the buyer's entire and exclusive remedy. Without limiting the generality of the foregoing, Burke will not be responsible for labor costs involved in the removal of products or the installation of replacement products. Some states do not allow the exclusion of incidental damages, so the above exclusion may not apply to you.

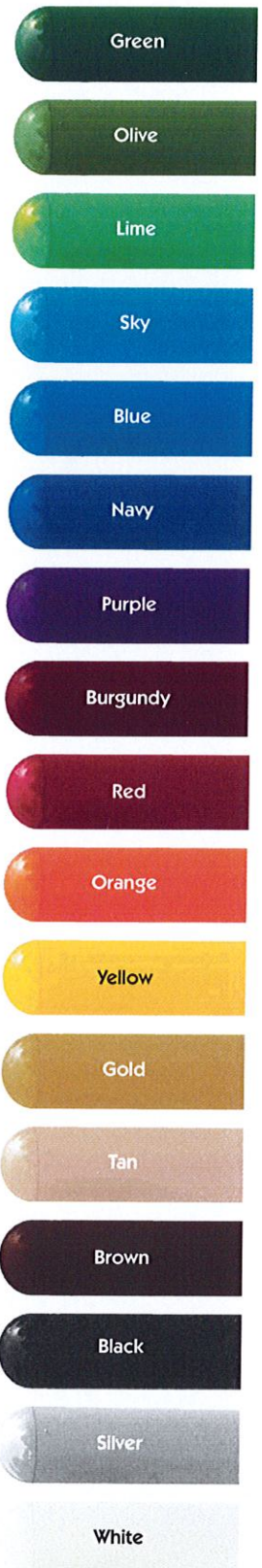
For more information regarding the warranty, call Customer Service at 920-921-9220 or 1-800-356-2070.

01/2016

COLORS THAT MOVE YOU



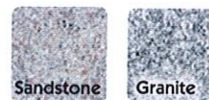
Powder Coat Paint



Shade Canopies



RockIt



Vinyl Site Amenities



Platforms



VISIT BCIBURKE.COM/COLORSELECTION TO CUSTOMIZE YOUR PLAYGROUND COLORS!

WORK THAT MOVES US

Handcrafted by Artisans

Walk through our Fond du Lac, WI manufacturing facility and you will see playgrounds coming to life through the hands of our people. In the age of assembly lines, we work to combine efficiency with a personal touch that makes every playground special. Bringing quality playgrounds to communities like yours is Work That Moves Us, and we hope the playgrounds we make move you too.

Superior Service

Customer Service is a hallmark of Burke and we take pride in the fact that when you call, we answer. Yes, a real-live person will answer your call and help to direct you to the proper person. We have factory-direct customer service representatives that are available to answer questions, help with replacements parts or field inquiries about installations.

Your Burke Representative

We as Burke Representatives are passionate about bringing play to your community and helping you design your perfect play environment! We are knowledgeable and experienced about the entire playground process from site evaluation to design to maintenance and will work with you beyond installation to make sure your playground is, and remains, all you dreamed!



**FROM CONCEPT TO
REALITY, BURKE
AND YOUR LOCAL
REPRESENTATIVE WILL
WORK CLOSELY WITH
YOU TO BUILD YOUR
DREAM PLAYSPACE.**



BURKE'S HISTORY

John Edward was a farmer in Fond du Lac, WI and farmed the land the Burke company headquarters stands on today. In 1920, he incorporated a weather-stripping company that quickly expanded to include the design and production of designer radiator furniture. After receiving a request to fabricate a slide for a family friend, Burke entered the playground industry! Soon playground products were the company's main focus and they introduced Swing King, a residential line of play equipment.

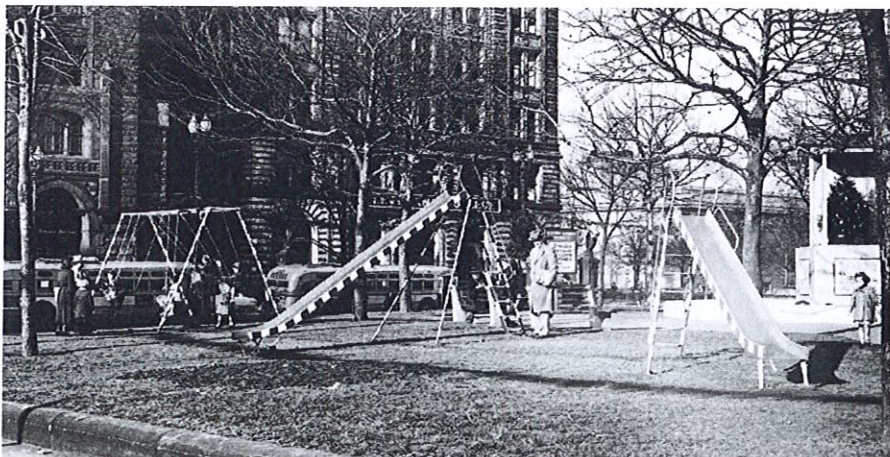
When World War II began, Burke, like many companies, changed their focus to the war effort. J. E. Burke, always an inventor, devised a self-contained ammunition cart that could be parachuted to army personnel. The Parachute, as it was suitably named, was also used to deliver food and medical supplies. The company's dedication earned special recognition, and in 1943, the J.E. Burke Company was awarded an Excellence in War Production citation. Over the next 40 years, the Burke family grew the business and began to add interesting color and material combinations. In 1972, Burke invented the original Funnel Ball® that became a staple on playgrounds across the country.

In the late 1990's, Greg Burke, grandson of founder J.E. Burke, determined it was time to find a successor to lead the business into the 21st Century. Tim Ahern became the president/CEO of Burke in 1997 and remained until 2015 when Incline Equity Partners invested in Burke and Michael Phelan became the new president/CEO.

Burke remains committed to the original innovation, customer service and superior quality that sustained the company for generations. As we move into 2016 and beyond, we are bringing play to the next level with our focus on "Play That Moves You" and innovating products that move all of us in so many ways.



**TODAY WE CONTINUE TO
STAND BY J.E. BURKE'S
ORIGINAL COMMITMENT
TO SUPERIOR QUALITY,
OUTSTANDING SERVICE AND
CONSTANT INNOVATION.**



BURKE BUILT QUALITY

Discover the value of investing in a Burke Playground:

KoreKonnnect® Direct-Bolt Clamp System: Nucleus and Voltage feature our Industry-leading KoreKonnnect direct-bolt clamp system resulting in the strongest and most accurate connection system ever. Factory located connection points make for easy, precise installation and an error-free fit. Best of all, KoreKonnnect is covered for 100 years under our non-prorated Generations Warranty.

Direct-Bolt Connection System: Intensity and Little Buddies feature Burke's trusted direct-bolt connection that uses a durable, straightforward direct-bolt system to ensure a trouble-free installation and provide the necessary strength to accommodate the demands of playing children. Like our KoreKonnnect system, Direct-Bolt connections are covered for 100 years under our Generations Warranty.

EZKonnnect® Deck Mounting System: Our exclusive self-leveling deck attachment and factory CNC construction allows for faster and more precise location of decks during installation. The 2-bolt per corner deck attachment increases overall structure strength and stability.

Platforms: Burke's oversized non-slip platforms are constructed of heavy-duty punched steel that can support more than two tons. Our vinyl coating is California compliant, free of lead and other hazardous heavy metals.

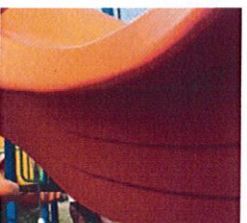
Tamper-Resistant Stainless Steel Hardware: All hardware is covered for 100 years under our Generations Warranty.

Premium Powder Coatings: Our industry-leading powder coatings and finishes prevent fading, last longer and deter rust. We also offer a "coastal package" powder coat system. This special powder coat system for metal components and upright posts will provide additional corrosion and chemical protection along with added longevity to the color and gloss retention of the powder coated parts. Contact your Burke Representative for more information on colors, price and warranty.

Compound Plastics with UV-15: You'll get long wear and bright, vibrant colors that hold up for years thanks to our thick, durable rotomolded plastics with UV-15 protection. This is why we can cover them for 15 years under our non-prorated Generations Warranty.

Climbing Cables: Our climbing cables are flexible enough to provide movement, yet strong enough to last. Our ropes are made from six polyester cords with steel reinforcement wrapped around a synthetic fiber core. Each cord contains eight galvanized steel strands tightly covered with polyester multi-fibers. Our RopeVenture cables consist of six strands, each containing 24 stainless steel reinforcing strands within a nylon sleeve, wrapped around a solid nylon core.

Aluminum Connectors: Swivel connectors at the end of our ropes allow assembly at any angle with no unwanted twists in the net. The aluminum fittings used to secure the joints are swaged in place to prevent any movement between the rope and fittings that could cause wear.



FREE RESOURCES

NPPS Safety Kit

Burke truly gives you the most value for your money. As part of our Total Cost of Ownership Package, we offer value-added resources FREE with every playground purchase. The National Program for Playground Safety (NPPS) Playground Supervision Safety Kit helps supervisors and educators be prepared on the playground. Learn more at bciburke.com/safety.

Intensity Curriculum

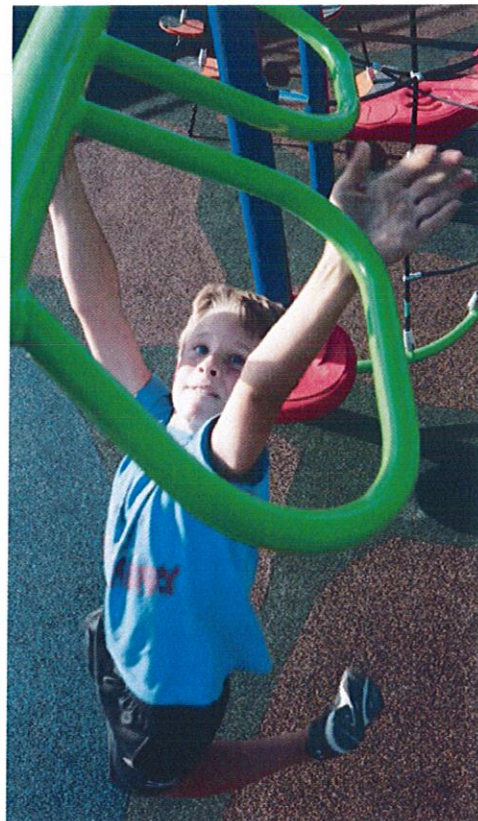
To help combat childhood obesity, Burke created the Intensity Curriculum for teachers, recreational specialists and playground supervisors to actively engage children in safe, fitness-oriented activities on Intensity playgrounds. The kit is FREE with every Intensity fitness play complex purchase and includes access to exclusive online instructional videos, an Intensity Curriculum handbook and a notepad for on-the-playground convenience. Learn more at bciburke.com/intensitycurriculum.

Custom Maintenance Kit

To help maintain a safe, functioning playground we include a custom maintenance schedule, touch-up paint, graffiti remover and carrying case FREE with every playground structure purchase.

Planning & Funding Tools

We provide you with FREE tools to plan your playground from fundraising and design to installing a community build playground. At Burke, we understand the dedication and hard work it takes to raise the funds for playground equipment. That's why we created Funds for Fun, a direct donation fundraising program to help your organization raise the funds it needs for your new playground. We've also partnered with The School Funding Center to provide up-to-date grant information along with expert grant writing services.



**FITNESS CURRICULUM
FREE WITH AN INTENSITY
PLAYGROUND PURCHASE.**



FEATURED PLAY EVENTS



Viper Slide

The Viper Slide can't be tamed, but kids love trying! Viper's exciting twisty and fast serpentine action is guaranteed to generate incredible high-energy fun and safe, healthy play.



Wild Web Rope Climber

How fast can you get from one side to the other? Looks easy ... until you try it! The flexible nature of the cable-reinforced rope calls for a firm grip, sure footing, concentration and some perseverance as you work your way to the next post.



Swift Glider

Whether you're gliding down or working to shimmy your way up, you'll find this piece of outdoor fitness play complex equipment can keep your body and your imagination going for quite a while!

FEATURED PLAY EVENTS



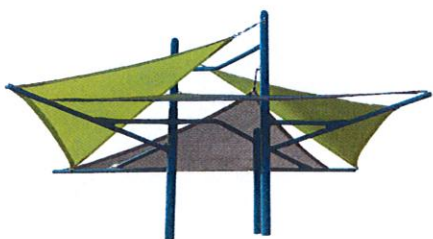
Paddle Ball Ring Panel

Interactive play events provide opportunities for social interaction while increasing coordination and adding additional sensory stimulation to the playground.



Extreme Cyclone

It challenges children ages 5-12 to utilize their strength and coordination. It helps with the development of kinesthetic awareness as well as focus on proper posture.



Ara Square Shade

The Ara Shade System provides protection from the sun with 97% UV screen protection and is designed to withstand up to 90mph winds. The addition of Ara can change the entire look of the space and elevate the design to a whole new level!



EXCLUSIVE

Comet

It challenges children to utilize their strength, balance and coordination. It can be used by a single child or by a group of children for maximum play ability. Children can sit or stand on the outside or inside of the comet.