

HIGHLAND OAKS

8-UNIT BUILDING

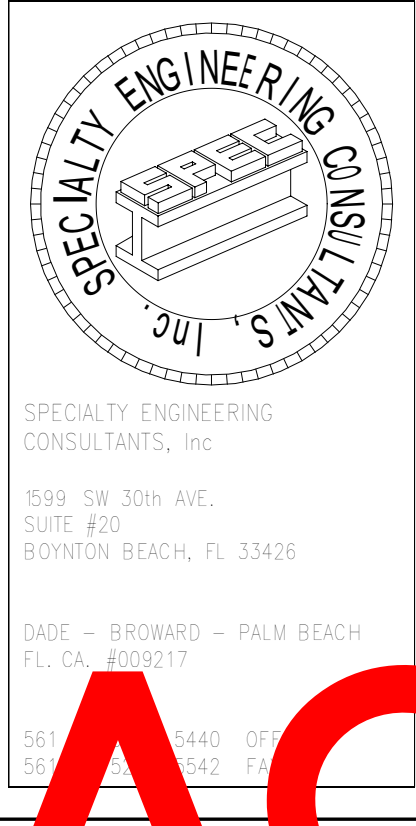
SHEET INDEX			
	COVER SHEET		
A-1	BUILDING PLANS		
A-2	ELEVATION TYPE A		
A-3	ELEVATION TYPE B		

Dewey A.
LeBlanc

Digitally signed by Dewey A. LeBlanc
DN: c=US, st=Florida, l=Boynton Beach, o=Specialty Engineering Consultants, Inc., cn=Dewey A. LeBlanc, email=Adam@specsfc.com
Date: 2021.03.03 15:57:30 -05'00'

SITE & AREA CALCULATIONS	
TOTAL BUILDING AREA	11,086 SQ.FT.
PROPOSED A/C AREA	11,359 SQ.FT.
PROPOSED NON A/C AREA	264 SQ.FT.

BLDG. DESIGN DATA	
CODES: FLORIDA RESIDENTIAL BLDG. CODE 2020 EDITION NFPA FL FIRE PREVENTION CODE 7TH ED. NEC NATIONAL ELECTRIC CODE 2017 CARBON MONOXIDE DETECTORS REQUIREMENTS PER FL ADMINISTRATIVE CODE RULE 9B-3.0472 ACI 318-14; ASTM 47th ED.	
DESIGN CRITERIA	
COUNTY	POMPANOBACH, FL
OCCUPANCY GROUP	R-3
NUMBER OF STORIES	2
BUILDING CATEGORY	ENCLOSED
BASIC WIND SPEED, mph	170
WIND IMPORTANCE FACTOR	1.0
WIND EXPOSURE CATEGORY	C
VELOCITY PRESSURE	28.44 PSF
INTERNAL PRESSURE COEFFICIENT	+/- .18
MINIMUM SOIL PRESSURE, psf	2500
FLOOR LOADS (LIVE & DEAD)	55
ROOF DEAD LOAD, psf	20
ROOF LIVE LOAD, psf	30
CONTRUCTION TYPE	"III B"UNPROTECT



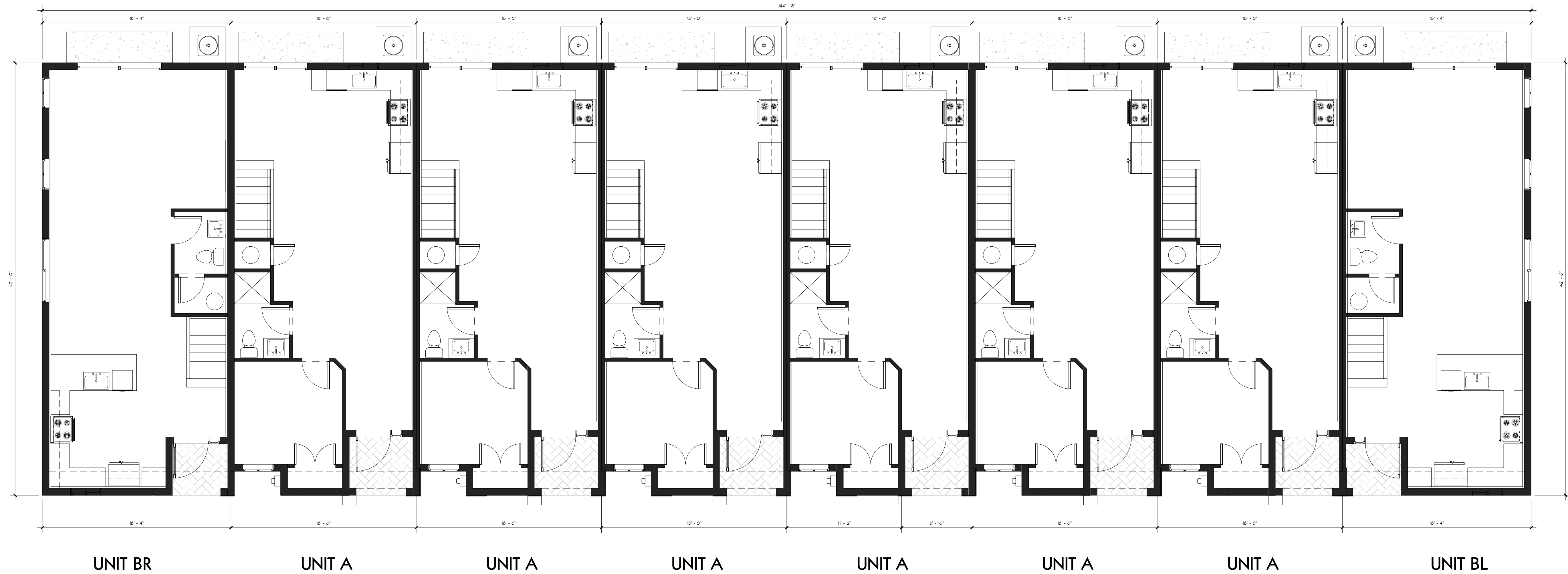
8-UNIT BUILDING

AAC

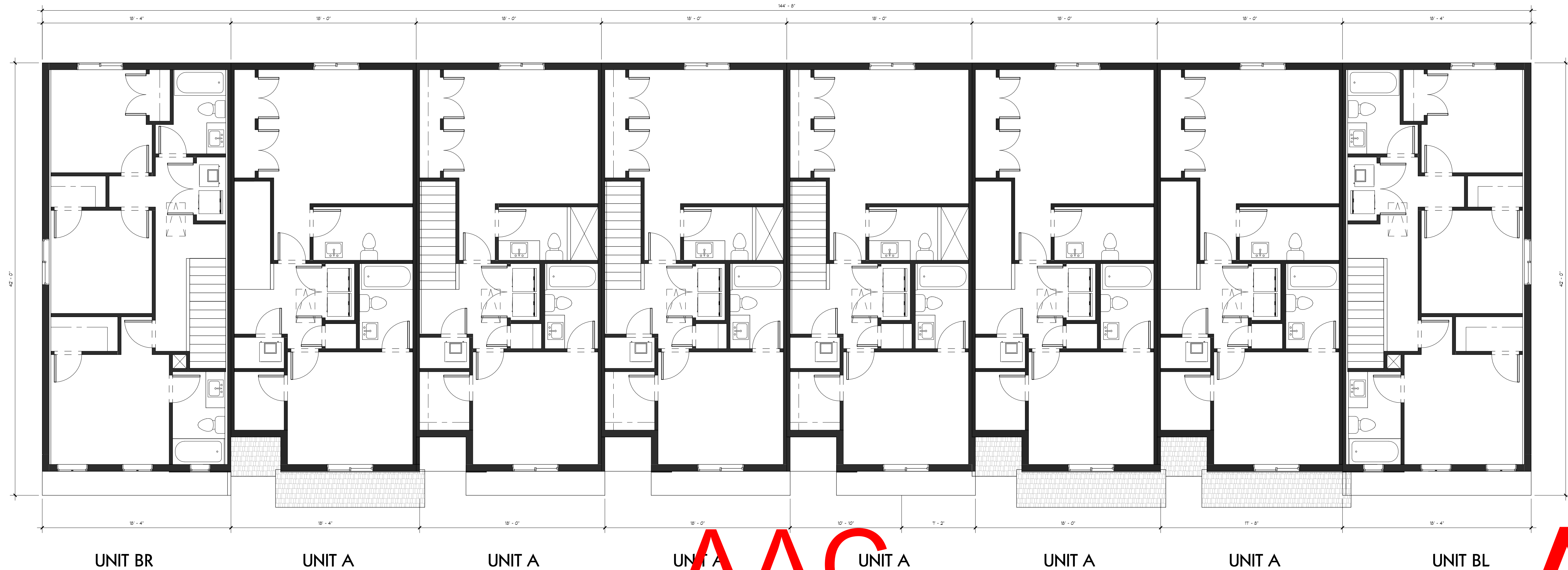
PZ13-12000041
07/06/2021

AAC

PZ13-12000041
6/1/2021



1 1st Flr
3/16" = 1'-0"

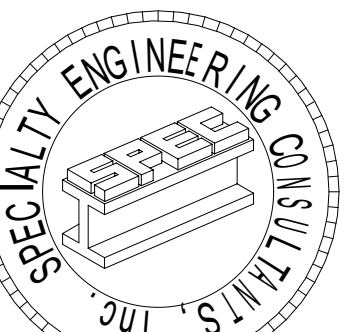


AAC
PZ13-12000041
07/06/2021

AAC
PZ13-12000041
6/1/2021

BUILDING PLANS

SHEET INFORMATION
PROJECT INFORMATION
8- UNIT BUILDING
HIGHLAND OAKS
POMPANO BEACH, FLORIDA

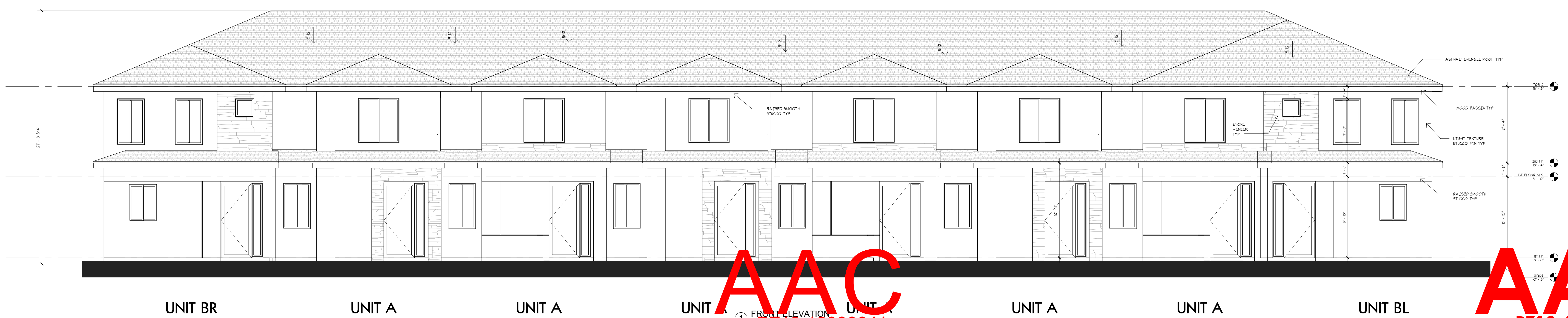
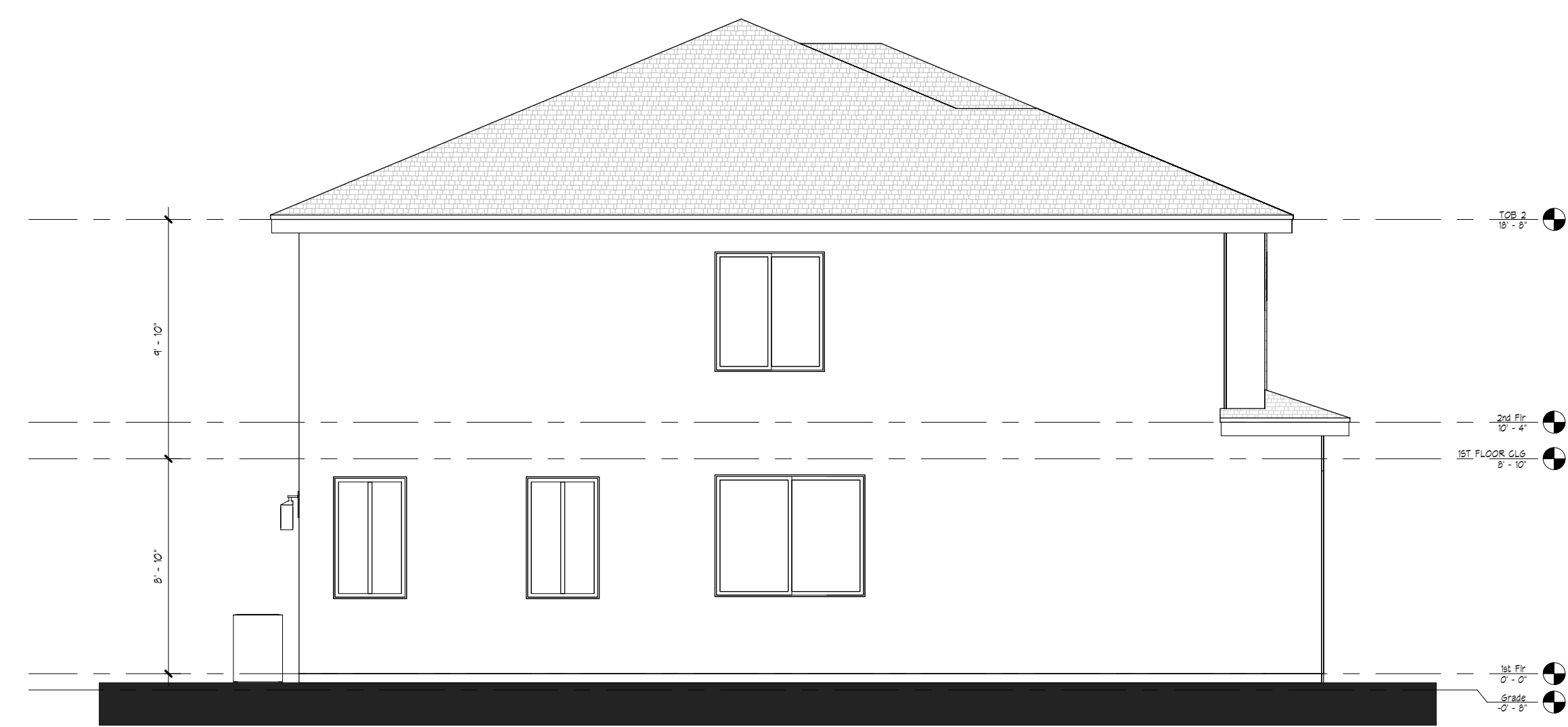
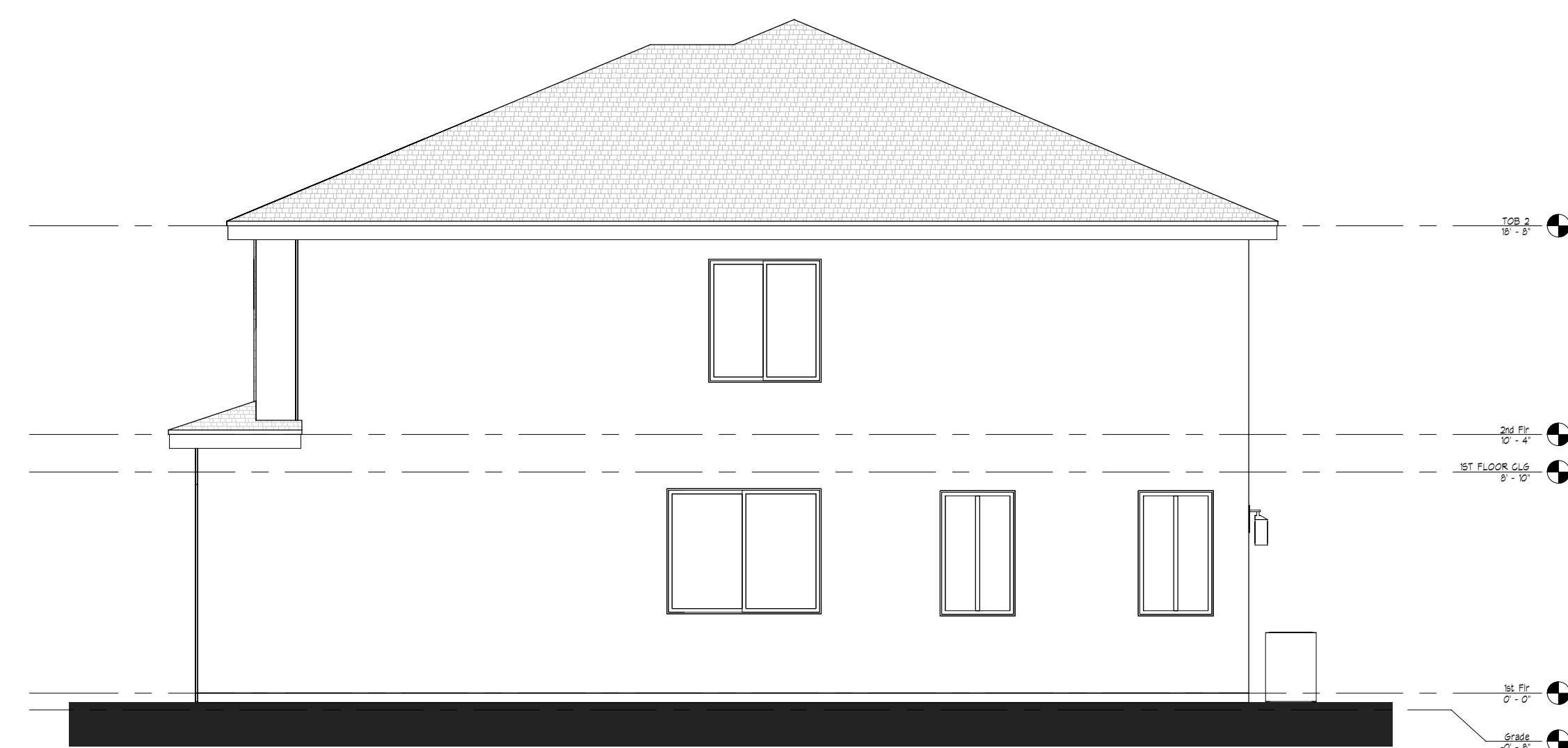
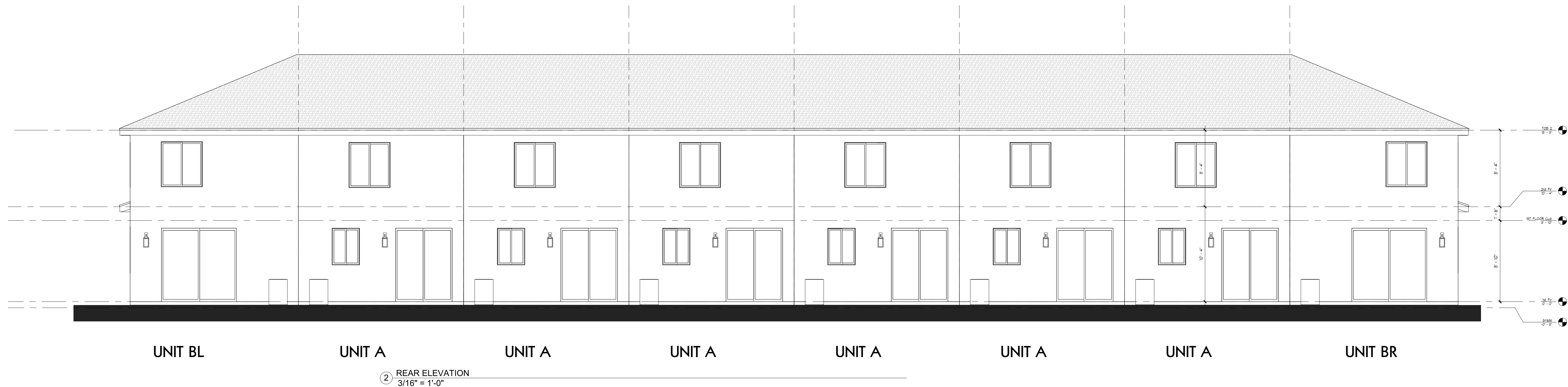


SPECIALTY ENGINEERING CONSULTANTS, Inc.
1599 SW 30th AVE.
SUITE #20
BOYNTON BEACH, FL 33426
DADE - BROWARD - PALM BEACH
FL, CA #009217
561 - 752 - 5440 OFFICE
561 - 752 - 5542 FAX

FILE NAME:
SCALE:
DATE 2/21/2021
RVD. BY Checker
DRWN. BY Author

REVISION SCHEDULE		
NO	DATE	Description

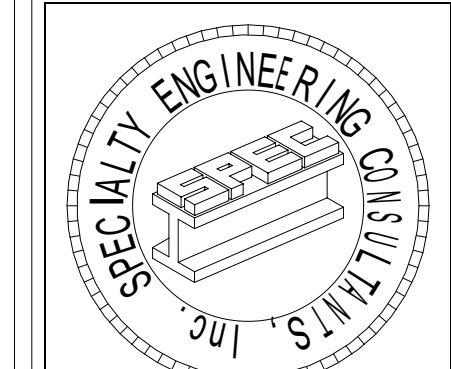
Dewey A. LeBlanc
Digital signed by
Dewey A. LeBlanc
DN: cn=US, st=Florida,
o=Specialty Engineering
Consultants, Inc.,
ou=Dewey A. LeBlanc,
email=adam@spec.c
155746
SEAL
D. A. LeBLANC, PE FL #77012
SHEET #



ELEVATIONS

SHEET INFORMATION
8- UNIT
BUILDING
TYPE B

PROJECT INFORMATION
HIGHLAND OAKS
POMPAHO BEACH
FLORIDA



SPECIALTY ENGINEERING
CONSULTANTS, Inc.
1599 SW 30th AVE.
SUITE #20
BOYNTON BEACH, FL 33426
DADE - BROWARD - PALM BEACH
FL, CA. #009217
561 - 752 - 5440 OFFICE
561 - 752 - 5542 FAX

FILE NAME:
SCALE:
DATE 2/21/2021
RVD. BY Checker
DRWN. BY Author

REVISION SCHEDULE		
NO	DATE	Description

Dewey
A.
LeBlanc
C
SEAL
D. A.
SHE
Digitally signed by
Dewey A. LeBlanc
DN: cn=Dewey A. LeBlanc,
ou=Specialty Engineering
Consultants, Inc., email=adam@specf.c
155811
A-3
PZ13-12000041
6/1/2021