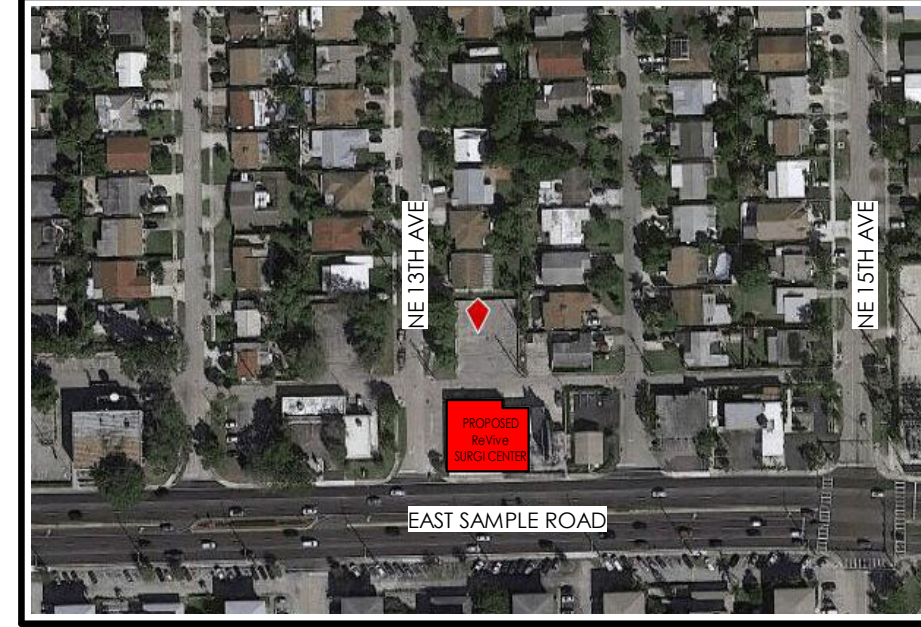


# ReVive SURGICENTER

POMPANO BEACH, FLORIDA

ACHA CLIENT CODE # 14/14961089-11236-1

1347 EAST SAMPLE ROAD  
POMPANO BEACH, FLORIDA 33064



PROJECT LOCATION MAP

PARKING DATA	
EXISTING SITE PARKING	
22 STANDARD SPACES	
2 ACCESSIBLE SPACES (10% REQUIRED OF TOTAL SPACES)	
<b>24 TOTAL PARKING</b>	
PARKING REQUIREMENTS CITY OF POMPANO BEACH	
TOTAL BUILDING SF = 5,589 SF	
MEDICAL OFFICE	1 PER 200 SF @ 1,363 SF = 7 SPACES
SPECIALTY MEDICAL FACILITY (AMBULATORY SURGICAL CENTER)	
TREATMENT AREA	1 PER 200 SF @ 391 SF = 2 SPACES
REMAINING AREAS	1 PER 300 SF @ 3,834 SF = 13 SPACES
<b>22 SPACES TOTAL REQUIRED</b>	

PROJECT DATA		
CATEGORY	CONSTRUCTION	FBC 2020 7th EDIT. CODE REF.
CONSTRUCTION TYPE (IBC)	TYPE V-B	TABLE 601
SPRINKLERED	YES	
NFPA TYPE	V (00)	
OCCUPANCY (IBC)	B-BUSINESS	SEC. 304.1
OCCUPANCY SEPARATION	1HR SEPARATION	SEC. 402.2
OCCUPANCY (IFPA)	AMBULATORY SURGICAL CENTER	
ALLOWABLE BUILDING AREA	36,000 SF	TABLE 504.2
EVI ACCESS TRAVEL	300' MAXIMUM DISTANCE	TABLE 1017.2
COMMON PATH OF TRAVEL	100' MAXIMUM DISTANCE	TABLE 1016.2.1
EGRESS COMP. CAPACITY	65 x 15' @ 20' 36" MIN. PROV.	SEC. 1005.3.2 (1)
INTERIOR FINISHES	CLASS "C" FINISHES	TABLE 803.1.1
SITE DATA		
ZONING JURISDICTION:	POMPANO BEACH, FLORIDA	
ZONING:	COMMERCIAL	
USE:	SPECIALTY MEDICAL	
UL DATA- SMOKE & SMOKE/FIRE SEPERATION		
PARTITION ASSEMBLY:	NEW 1 HR FIRE PARTITIONS	ULR 1445

AREA/OCCUPANT DATA	NUMBER OF OCCUPANTS	F-1004.5
CLINIC AREA	1,366 SF	
COMMON AREA	349 SF	
ASC TENANT AREA	3,744 SF	
<b>TOTAL BUILDING AREA</b>	<b>5,518 SF</b>	
SURGERY CENTER OCCUPANCY BREAKDOWN		
ACCESSORY (STORAGE, MECH. & EQUIP)	401 SF / 300 CSF = 2 PERSONS	
WAITING	210 SF / 15 CSF = 14 PERSONS	
BUSINESS AREAS	1,141 SF / 150 CSF = 8 PERSONS	
COURTYARD AREAS	2,012 SF / 100 CSF = 21 PERSONS	
TENANT OCCUPANCY TOTAL	45 PERSONS	

PLUMBING FIXTURE CALCULATIONS			FBC TABLE 2202.1
BASED ON 50 OCCUPANTS			
TOTAL # MEN'S WATER CLOSET	REQUIRED =1	1 PROVIDED	
TOTAL # WOMEN'S WATER CLOSET	REQUIRED =1	1 PROVIDED	
TOTAL # UNISEX WATER CLOSET		2 PROVIDED	
TOTAL # WATER CLOSET		4 PROVIDED	
TOTAL # MEN'S LAVATORIES	REQUIRED =1	1 PROVIDED	
TOTAL # WOMEN'S LAVATORIES	REQUIRED =1	1 PROVIDED	
TOTAL # UNISEX LAVATORIES		2 PROVIDED	
TOTAL # LAVATORIES		4 PROVIDED	
TOTAL # DRINKING FOUNTAINS	REQUIRED =1	1 HIGH/LOW PROVIDED	
TOTAL # SERVICE SINK	REQUIRED =1	2 PROVIDED	

LIST OF CODES AND STANDARDS	
NFPA-70-2017	STANDARD FOR PORTABLE FIRE EXTINGUISHERS
NFPA-13-2014	STANDARD FOR THE INSTALLATION OF SPRINKLER SYSTEMS
NFPA-25-2017	STANDARD FOR THE INSPECTION, TESTING AND MAINTENANCE OF WATER-BASED FIRE PROTECTION SYSTEMS
NFPA-37-2018	STANDARD FOR THE INSTALLATION AND USE OF STATIONARY COMBUSTION ENGINES AND GENERATORS
NFPA-70-2017	NATIONAL ELECTRIC CODE
NFPA-72-2019	NATIONAL FIRE ALARM CODE
NFPA-2014	STANDARD FOR THE CODES AND FIRE WINDOWS
NFPA-90A-2018	STANDARD FOR THE INSTALLATION OF AIR CONDITIONING AND VENTILATION SYSTEMS
NFPA-90B-2018	STANDARD FOR THE INSTALLATION OF WARM AIR HEATING AND AIR CONDITIONING SYSTEMS
NFPA-99-2015	STANDARD FOR HEALTH-CARE FACILITIES
NFPA-101-2018	LIFE SAFETY CODE
NFPA-110-2014	STANDARD FOR EMERGENCY AND STANDBY POWER SYSTEMS
NFPA-112-2015	STANDARD FOR FIRE SAFETY AND EMERGENCY EYEWASH
NFPA-201-2018	STANDARD ON THE WALLS AND FIRE BARRIERS WALLS
NFPA-241-2015	STANDARD FOR SKEWED/ROOF CONSTRUCTION, ALTERATION AND DEMOLITION OPERATIONS
NFPA-252-2017	STANDARD METHODS OF FIRE TESTS OF DOOR ASSEMBLIES
NFPA-253-2015	STANDARD METHOD OF TEST FOR CRITICAL FLUX OF FLOOR COVERING SYSTEMS USING A REMOTE HEAT ENERGY SOURCE
IBC - 2020	FLORIDA BUILDING CODE, 7TH EDITION (2020)
FC-605 - 2020	FLORIDA MECHANICAL CODE, 7TH EDITION (2020)
FC-AC - 3000	FLORIDA BUILDING CODE, 7TH EDITION (2020)
FC-AC - 2020	FLORIDA BUILDING CODE, 7TH EDITION (2020)
FC - 2018	GUIDELINES FOR THE DESIGN AND CONSTRUCTION OF CONTAINER FACILITIES, 2018 EDITION

## OWNER

ReVive SURGICENTER, LLC  
2710 WEST ATLANTIC AVENUE  
DELRAY BEACH, FL 33775  
PH: (314) 283-8738

## ARCHITECT

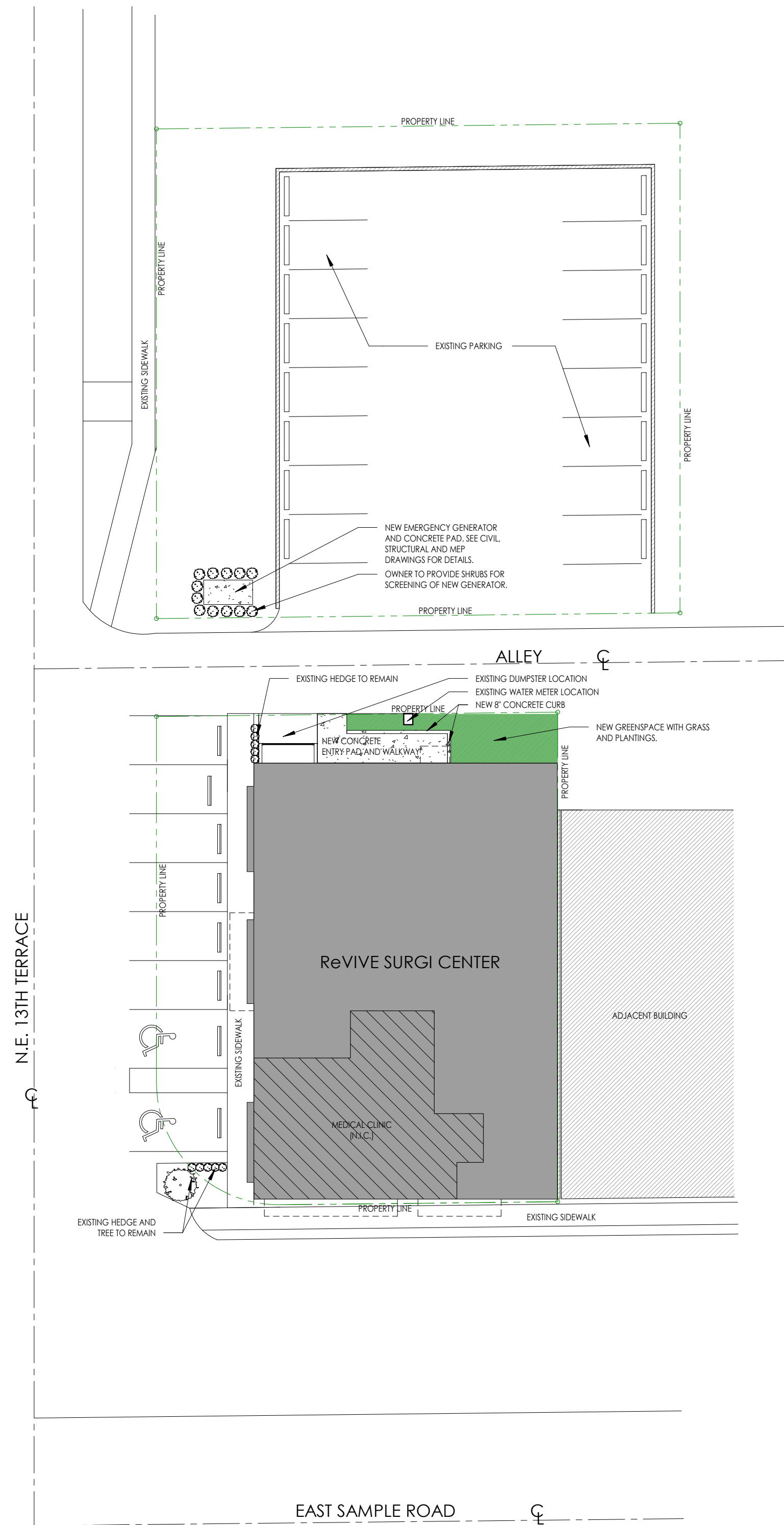
GORDON & ASSOCIATES ARCHITECT, LLC  
730 EAST FIFTH AVENUE  
MOUNT DORA, FL 32757  
PH: (352) 383-6505  
FAX: (352) 589-0685

## CONSULTING ENGINEERS

I.C. THOMASSON ASSOC., INC.  
3030 N. ROCKY POINT DRIVE W., SUITE # 150  
TAMPA, FL 33607  
PH: (813) 365-3085  
FAX: (813) 346-3550

## STRUCTURAL ENGINEER

FULLONE STRUCTURAL GROUP  
2253 CENTRAL AVENUE # 105  
ST PETERSBURG, FL 33173  
PH: (727) 577-2222



## SITE PLAN

1" = 20'-0"

## INDEX OF DRAWINGS

### ARCHITECTURAL

- A 1.1 PROJECT COVER AND DATA
- A 3.0 DEMOLITION PLAN
- A 3.1 INTERIOR SLAB PLAN
- A 3.2 FLOOR PLAN
- A 3.3 LIFE SAFETY PLAN
- A 3.4 CEILING PLAN
- A 3.5 ROOF PLAN
- A 4.1 BUILDING SECTION AND ELEVATIONS
- A 6.1 INTERIOR CONSTRUCTION & ADA DETAILS
- A 6.2 FIRE RATED CONSTRUCTION
- A 8.1 DOOR AND OPENING INFORMATION
- A 10.1 INTERIOR ELEVATIONS
- A 10.2 CASEWORK DETAILS
- A 10.3 CASEWORK DETAILS

### STRUCTURAL

- S.1.1 STRUCTURAL SPECIFICATIONS
- S.1.2 WIND & LOAD DATA
- S.2.1 DEMOLITION PLAN
- S.2.2 FOUNDATION PLAN
- S.2.3 FLOOR SLAB PLAN
- S.2.4 ROOF AND PARAPET PLAN
- S.3.1 TYPICAL DETAILS
- S.3.2 TYPICAL DETAILS
- S.4.1 SECTIONS
- S.4.2 SECTION & ELEVATION
- S.4.3 BUILDING SECTIONS

### PLUMBING

- P000 PLUMBING LEGEND
- P110 PLUMBING UNDERGROUND PLAN
- P110 PLUMBING FLOOR PLAN
- P400 SANITARY / VENT ISOMETRIC DIAGRAM
- P601 DOMESTIC WATER ISOMETRIC DIAGRAM
- P800 PLUMBING DETAILS
- P801 PLUMBING DETAILS

### MECHANICAL

- M000 MECHANICAL LEGEND
- M110 HVAC FLOOR PLAN
- M120 HVAC ROOF PLAN
- M210 HVAC CONTROLS & PIPING - FLOOR PLAN
- M700 MECHANICAL SCHEDULES
- M701 MECHANICAL SCHEDULES
- M800 MECHANICAL DETAILS
- M801 MECHANICAL DETAILS
- M802 MECHANICAL DETAILS
- M803 MECHANICAL DETAILS
- M804 MECHANICAL DETAILS
- M900 MECHANICAL DETAILS

### MEDICAL GAS

- MG000 MEDICAL GAS LEGEND
- MG110 MEDICAL GAS FLOOR PLAN
- MG600 MEDICAL GAS ISOMETRIC DIAGRAM
- MG800 MEDICAL GAS DETAILS

### FIRE PROTECTION

- FP000 FIRE PROTECTION LEGEND
- FP110 FIRE PROTECTION FLOOR PLAN
- FP800 FIRE PROTECTION DETAILS
- FP801 FIRE PROTECTION DETAILS
- FP802 FIRE PROTECTION DETAILS

### ELECTRICAL

- E000 ELECTRICAL LEGEND
- E110 LIGHTING FLOOR PLAN
- E210 POWER FLOOR PLAN
- E310 SYSTEMS FLOOR PLAN
- E410 ELEC/HVAC & FIRE ALARM PLAN
- E420 ELECTRICAL ROOF PLAN
- E600 ELECTRICAL RISER DIAGRAM
- E601 ELECTRICAL ONE LINE DIAGRAM
- E700 ELECTRICAL SCHEDULES
- E701 ELECTRICAL SCHEDULES
- E800 ELECTRICAL DETAILS
- E801 ELECTRICAL DETAILS
- E802 ELECTRICAL DETAILS
- E803 ELECTRICAL DETAILS
- E804 ELECTRICAL DETAILS

SEAL

THIS DRAWING AND THE PROPERTY OF GORDON & ASSOCIATES ARCHITECT, LLC. IT IS TO BE USED ONLY FOR THE PROJECT AND SITE IDENTIFIED HEREIN. ANY REUSE OR REPRODUCTION OF THIS DRAWING WITHOUT THE WRITTEN PERMISSION OF GORDON & ASSOCIATES ARCHITECT, LLC IS PROHIBITED. NOT VALID FOR USE ANYWHERE.

© 2023

730 East Fifth Avenue  
Mount Dora, Florida 32757  
Telephone 352-383-6505  
Facsimile 352-589-0685  
ARO000957

**Gordon & Associates**  
ARCHITECT, LLC

PROJECT NO. 2202

CONTENTS

PROJECT COVER AND DATA

03/29/2023

REVISED

1

07/17/2023

2

02/22/2023

3

12/04/2023

**A 1.1**