

S T U D I O U S
[D E S I G N]

RLI 26-002

Continuing Contract for Architectural Services CCNA

Pompano Beach, Florida

Letter of interest submitted by

Stacey Boynton, AIA, NOMA

Principal Architect

Staceyboynton@studious-design.com

954 740 7558 | 361 N. University Drive #731

TABLE OF CONTENTS

- Letter of Transmittal | page 3
- Technical Approach | page 6
- Firm Experience + References | page 11
- Project Team | page 17
- Resume + Licenses | page 23
- Statement of Skills + Experiences | page 27
- Office Locations | page 30
- Local Business + City Forms | page 32
- Financial Statements | page 33

LETTER OF TRANSMITTAL

Page 3

LETTER OF TRANSMITTAL

Procurement and Contracts Department
City of Pompano Beach
1010 NE 3 Avenue
Pompano Beach, FL 33060
RE: RLI 26-002 – CONTINUING CONTRACT FOR ARCHITECTURAL SERVICES
(CCNA)

To Whom It May Concern:

STUDIO-US DESIGN is pleased to submit this Letter of Interest for the City of Pompano Beach's RLI 26-002, Continuing Contract for Architectural Services. Our firm fully understands the intent of the solicitation and expresses a strong and positive commitment to providing high-quality, timely, and comprehensive architectural services to support the City and CRA across the wide range of project types identified.

My name is Stacey Boynton, AIA, NOMA and I am a licensed Architect and Interior Designer in the State of Florida. I am also the Principal of STUDIO-US DESIGN. I will serve as the firm representative authorized to make all representations on behalf of STUDIO-US DESIGN.

Email: staceyboynton@studious-design.com
Phone: 954-740-7558

Firm Understanding & Commitment

STUDIO-US DESIGN understands that the City intends to award multiple continuing service contracts to support diverse and evolving municipal needs, including capital projects, renovations, building improvements, parks and recreation facilities, seawalls, roofing, emergency power, and other civic infrastructure. We acknowledge the importance of providing complete, technically thorough, and code-compliant deliverables across all project phases. Starting from preliminary analysis to schematic design to full construction documents leading into bidding support, permitting, construction administration, and project close-out.

Our firm is committed to delivering services with the utmost professionalism, attention to detail, responsiveness, and a standard of care. As a practice built around community stewardship and design advocacy, we recognize that municipal work requires not only technical expertise but also cultural awareness, communication, and strong coordination with City staff, stakeholders, and elected officials.

Community Engagement & Civic Alignment

As an architect who is deeply invested in Pompano Beach's growth, I place significant value on communicating with District Commissioners when projects occur within their boundaries. This approach has strengthened my understanding of local priorities and ensures architectural decisions support broader community outcomes. The project types identified in the RLI represent areas where intentional engagement, thoughtful listening, and contextual sensitivity are essential.

STUDIO-US
[DESIGN]

LETTER OF TRANSMITTAL

Given my background, lived experience, and ongoing work in Pompano Beach, I feel personally connected to the types of civic improvements outlined and am confident in my ability to contribute design solutions that positively impact residents and support the City's long-term vision.

For project types that fall outside my direct portfolio, I pride myself on collaboration and alignment with qualified specialty consultants. My leadership roles in AIA and NOMA have expanded my network significantly, giving me access to a strong consultant base that enhances my ability to deliver comprehensive, multidiscipline municipal work.

Commitment to Scope & Deliverables

STUDIO-US DESIGN is fully prepared to perform all services required under the RLI including:

- Preliminary design studies and evaluation of alternative solutions
- Preparation of complete construction documents and technical specifications
- Attendance at DRC, AAC, P&Z, pre-bid, award, Commission, and CRA meetings
- Preparation and submission of all required permit applications
- Full construction administration including:
 - Submittal and shop drawing review
 - Site observations and field coordination
 - Contractor communications and documentation
 - Certification for project milestones
- Project close-out activities, including punch list management and compliance documentation

We understand that each assignment will be authorized through a Work Authorization (WA), and we are prepared to provide timely scopes, schedules, and pricing for each task.

Thank you for the opportunity to submit our qualifications. STUDIO-US DESIGN looks forward to the possibility of supporting the City of Pompano Beach through this continuing services contract. Please feel free to contact me directly with any questions or for additional information.

Sincerely,



Stacey Boynton, AIA, NOMA
Principal Architect

STUDIO-US
[DESIGN]

TECHNICAL APPROACH

Page 6

TECHNICAL APPROACH

1. Project Understanding

STUDIO-US DESIGN understands that the City of Pompano Beach requires architectural firms capable of providing quality, comprehensive services for a wide variety of municipal and CRA projects. These include capital improvement work, municipal building renovations, roofing and structural repairs, seawall or bridge rehabilitation, emergency power projects, parks and recreation improvements, and other specialized civic assignments.

We recognize that each assignment will be issued through a Work Authorization (WA) with specific scopes, schedules, deliverables, and coordination requirements. Our methodology is grounded in early alignment, transparent communication, and ongoing stakeholder engagement, including coordination with District Commissioners whose communities are directly impacted by upcoming work.

As a practice rooted in community advocacy, I prioritize meeting with District Commissioners early in the project to ensure they understand the scope, nature, and community implications of work happening within their district. This supports trust building, strengthens communication, and ensures the architectural response remains aligned with district priorities throughout the project.

2. Design & Deliverable Approach

STUDIO-US DESIGN's approach emphasizes accuracy, clarity, and well coordinated documents. Our design process integrates technical rigor with continuous communication to ensure that potential issues are identified early and resolved before they affect permitting or construction.

Preliminary/Schematic Design

- Conduct field verification and existing-condition assessments
- Develop design alternatives with technical and visual clarity
- Feasibility studies and test fits.

TECHNICAL APPROACH

Design Development

- Coordinate with Engineers and other consultants to ensure all building systems are fully aligned, technically feasible, and integrated into the developing design.

Construction Documents

- Regular internal and cross-discipline coordination meetings
- Comprehensive architectural drawings, specifications, and technical notes
- Alignment with structural, MEP, civil, and specialty consultant drawings
- Milestone reviews at 30%, 60%, 90%, and final phases
- Early integration of staff and district commissioner feedback

Permitting & Agency Coordination

- Prepare and submit permit application packages and respond to City review comments in coordination with consultants and the contractor.
- Work closely with City staff and reviewers to clarify design intent and provide required documentation to support timely permit approval.

Bidding Support

- Provide architectural clarification during the bidding process, including responses to bidder questions and basic addendum preparation as needed.

Construction Administration

- Review of shop drawings, RFIs, and submittals
- Field observations and documentation
- Coordination with contractors to maintain design intent

Close-Out

- Punch list coordination
- Final inspections
- Turnover and certification documentation

TECHNICAL APPROACH

3. Project Management, Scheduling, & Controls

STUDIO-US DESIGN uses a structured and proactive approach that is centered around communication, accountability, and coordination.

Key strategies include:

- Kickoff meetings with City staff, consultants, and District Commissioners
- Defined schedules with milestone decision points
- Weekly internal coordination checks
- Consultant coordination meetings for complex scopes

4. Web-Based Project Management System Compliance

STUDIO-US DESIGN acknowledges the City of Pompano Beach's requirement that all awarded firms utilize the City's web-based project management system for project communication, document control, scheduling, tracking, and coordination. Although I have not previously used this specific platform, I am experienced with similar cloud-based systems and am fully committed to learning, using, and maintaining the system at the level the City expects.

I will participate in all City-provided training to ensure I become fully proficient with the platform. I will also ensure that any sub-consultants working under my direction are familiar with the system's processes and expectations. This includes managing and uploading all required documentation: submittals, RFIs, drawing issuances, addenda, meeting minutes, schedules, change directives, payment applications, and project correspondence within the City's platform as required.

I fully embrace the City's digital workflow structure and commit to daily log-ins, accurate updates, and timely communication throughout every phase of each assigned project. This ensures transparency, efficiency, and complete integration of the City's project management procedures into the delivery of all work performed by STUDIO-US DESIGN.

TECHNICAL APPROACH

5. Quality Assurance / Quality Control (QA/QC)

Quality control is central to how STUDIO-US DESIGN delivers municipal work. Our QA/QC method combines technical review with ongoing stakeholder engagement, ensuring accuracy, completeness, and alignment with community needs.

Our QA/QC process includes:

- Principal-level review at 30%, 60%, 90%, and final stages
- Cross-disciplinary coordination checks across architectural, structural, MEP, and civil drawings
- Integration of stakeholder and commissioner feedback early in the process
- Verification of accessibility, zoning, and life safety compliance
- Review of specialty consultant drawings for accuracy and alignment
- A final comprehensive quality review prior to submittal

This structured system results in clean, coordinated, and buildable documents that intend to minimize revisions, reduce change orders, and support timely permitting and construction.

6. Collaboration & Specialty Expertise

STUDIO-US DESIGN recognizes that certain municipal project types such as seawall design, bridge rehabilitation, emergency power systems, and other specialized infrastructure require technical knowledge from engineers who work in these disciplines every day. The intent here would be to collaborate with the right expertise to maintain cohesive, well-coordinated documents under my direct review.

FIRM EXPERIENCE + REFERENCES

PARLOR DOUGHNUTS

FIRM EXPERIENCE + REFERENCES

Client: Parlor Doughnuts

Location: Pompano Beach, FL

Year: 2024-Present

Project Type: Café / Restaurant Interior
Build-Out

Size: 2,300 SF

Project Description

This project consisted of converting an existing commercial space into a new Parlor Doughnuts location in Pompano Beach. The design included full interior planning, kitchen coordination, equipment integration, ventilation strategy, material upgrades, and brand-aligned interior design. The scope required strong coordination with the franchisor, landlord, MEP consultants, and the City of Pompano Beach permitting process.

Responsibilities

Complete interior layout and architectural plans

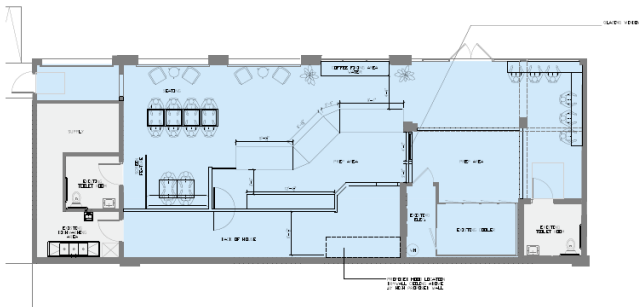
Kitchen equipment coordination

Code compliance for food service

Finish and material selection

Coordination with MEP consultants

Construction documents for permit



WORKMAN LAW FIRM – PROFESSIONAL OFFICE BUILD-OUT

FIRM EXPERIENCE + REFERENCES

Client: Workman Law Firm

Location: South Florida

Year: 2024

Project Type: Law Office Interior Renovation

Size: 2,811 SF

Project Description

The Workman Law Firm project consisted of a full interior renovation of an existing office space to create a modern, efficient law practice environment. The design incorporated private offices, workstations, a conference room, reception area, storage, and ADA-compliant circulation. The project focused on improving workflow, client experience, and material finishes that reflect the firm's identity.

Responsibilities

Space planning and architectural layout

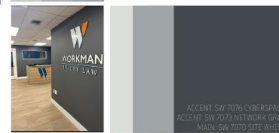
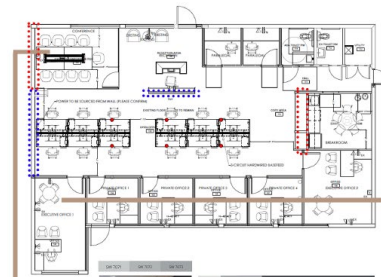
Interior finishes and material specifications

Construction documents and code compliance

Coordination with MEP consultants

Permitting support and revisions

Contractor coordination during construction



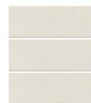
SHAW TEAM WORK

CONFERENCE ROOM CARPET
COLLABORATION TILE S1497 MAIN COLOR
INFLUENCE WITH BLUE ACCENTS



OPTION 1

OFFICE CARPET
SHAW KICK OFF TILE S1499
COLOR: INFLUENCE 97535



TOILET ROOM WALL TILE
PORTOBELLO CEMENT BLOCK
COLOR: WHITE 12 X 24

MIDGARD AMENITY CENTER UPGRADE

Client: Midgard Management / Office Park

Location: South Florida

Year: 2024

Project Type: Workplace + Amenity Center
Renovation

Size: 5,559 SF

Project Description

This project involved transforming an underutilized office suite into a contemporary tenant amenity center. The design included flexible lounge areas, collaborative seating, biophilic elements, new lighting, updated finishes, and a refreshed spatial identity to increase tenant engagement and support in-person work. The renovation reflects current workplace trends and supports leasing efforts for the office park.

Responsibilities

Concept design and space planning

Architectural drawings and finish specifications

Construction documents

Coordination with MEP consultants

Material palettes and biophilic design direction

Contractor coordination and field support

FIRM EXPERIENCE + REFERENCES



FIRM EXPERIENCE + REFERENCES

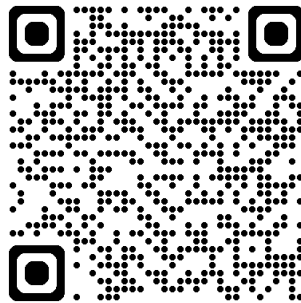
Project	Type	SF	Construction Cost (Est.)	CIP Category Alignment	Role	Client
Big Tree BBQ	Ground-Up + CRA	1,500 + 21,000 site	Over \$1,000,000 (Est.)	New Construction; Site/Land Improvements; Misc. Building Improvements	Architect of Record	pPompano CRA
Parlor Doughnuts	Restaurant Build-Out	2,300	TBD	Misc. Building Improvements; Tenant Improvements	Architect of Record	Parlor Doughnuts
Workman Law Firm	Office Build-Out	2,811	TBD	Misc. Building Improvements; Interior Renovation	Architect of Record	Workman Law
Midgard Amenity Center	Amenity Center Renovation	5,559	TBD	Municipal Building Renovations; Misc. Building Improvements	Architect of Record	Midgard

Additional Relevant Experience (Past 5 Years)

STUDIO-US DESIGN can provide supplementary project examples from work completed under previous firms within the past five years. A curated portfolio link will be included for the Selection Committee's review.

Portfolio URL:

WWW.STUDIO-US.WORK



PROJECT TEAM

PROJECT TEAM

STUDIO-US DESIGN operates as a principal-led architectural practice with a strong commitment to accuracy, responsiveness, and high-quality technical execution. Our lean structure ensures that each project benefits from direct oversight by a licensed architect, while our planned growth ensures the ability to scale efficiently as project needs expand.

The following outlines current and planned personnel who will support projects under RLI 26-002:

Stacey Boynton, RA, NCARB

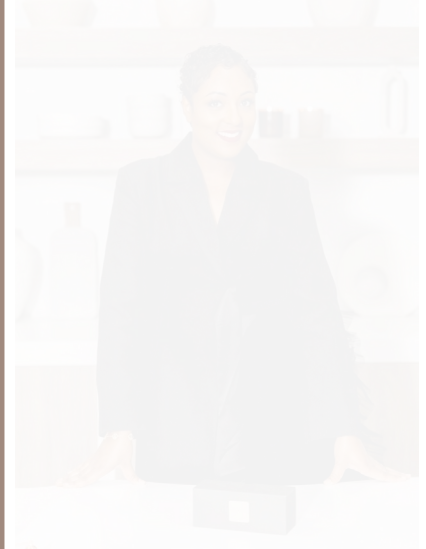
Principal Architect / Architect of Record

Role: Project Lead, Primary Point of Contact, QA/QC Director

Responsibilities:

- Complete leadership and oversight of all Work Authorizations
- Architectural design and construction documentation
- Life-safety, accessibility, zoning, and code compliance
- Stakeholder engagement, including District Commissioners
- Coordination with City staff and external agencies
- Oversight of structural, MEP, civil, and specialty consultants
- Quality control reviews at each major milestone
- Construction administration and field coordination
- Full utilization of the City's project management platform
- Schedule, deliverable, and communication management

Stacey will serve as the Lead Architect for all projects assigned under this RLI.



STUDIO-US
[DESIGN]

PROJECT TEAM

Kanisha Fowell – Design Assistant

Role: Design + Project Manager

Responsibilities:

- Redlines and revisions under Principal direction
- Finishes, materials, and product research
- Assistance preparing construction documents
- Support drafting and updates
- Support for code checks and detail verification

Kanisha Fowell is a registered architect in the state of Florida and a passionate advocate for diversity in the built environment. With over four years of experience in the architectural profession she has worked on multiple project types including maritime, commercial, and municipal. A LEED Accredited Professional in Building Design + Construction knowledgeable in AutoCAD, Revit, and Adobe creative cloud software. Kanisha is also an active leader in SoFloNOMA, where she has served as Secretary and Parliamentarian, playing a key role in organizing events, maintaining chapter records, and ensuring smooth operations.

EDUCATION-

Florida International University (FIU) Master of Architecture (M.Arch) May 2021

LEED Accredited Professional (AP) Building Design + Construction U.S. Green Building Council January 2022

Registered Architect (RA) Florida September 2024

PROJECTS: Projects:

Bermello Ajamil & Partners A Woolpert Company

Sullivan Park Facility - Deerfield Beach, Florida

Trip Hospitality New York, LLC Terminal B - Capital One Landing - LaGuardia Airport, New York

Terminal 16 - Port of Galveston - Galveston, Texas

STUDIO US
[DESIGN]

PROJECT TEAM

Planned Hire: Full-Time Architectural Staff (Within 1 Year)

To support anticipated workload and continued growth, STUDIO-US DESIGN plans to hire a full-time architectural staff member within the next year.

Planned Responsibilities:

- Support in design development and construction documents
- Assist with review responses, redlines, and detailing
- Coordination with consultants
- QA/QC participation
- Support for permitting and construction administration
- Assist with updates in the City's project management system

Traci Daves: Administrative Support The firm includes administrative support responsible for managing project documentation, uploading materials as needed and financial management. This role strengthens overall project organization and responsiveness.

Responsibilities:

- Meeting scheduling and project coordination
- Support with document uploads and file organization
- Assistance with procurement paperwork
- Support managing the City's web-based project management system
- Organization of project records and logs
- General administrative support for project deadlines

STUDIO-US
[DESIGN]

PROJECT TEAM

Consultant Team (Project-Specific)

STUDIO-US DESIGN works with a network of vetted consultants across multiple disciplines and will assemble project-specific teams tailored to the requirements of each Work Authorization.

Consultant disciplines may include:

- Structural Engineering
- MEP Engineering
- Civil Engineering
- Seawall / Marine Engineering
- Bridge / Infrastructure Engineering
- Emergency Power / Generator Specialists
- Landscape Architecture

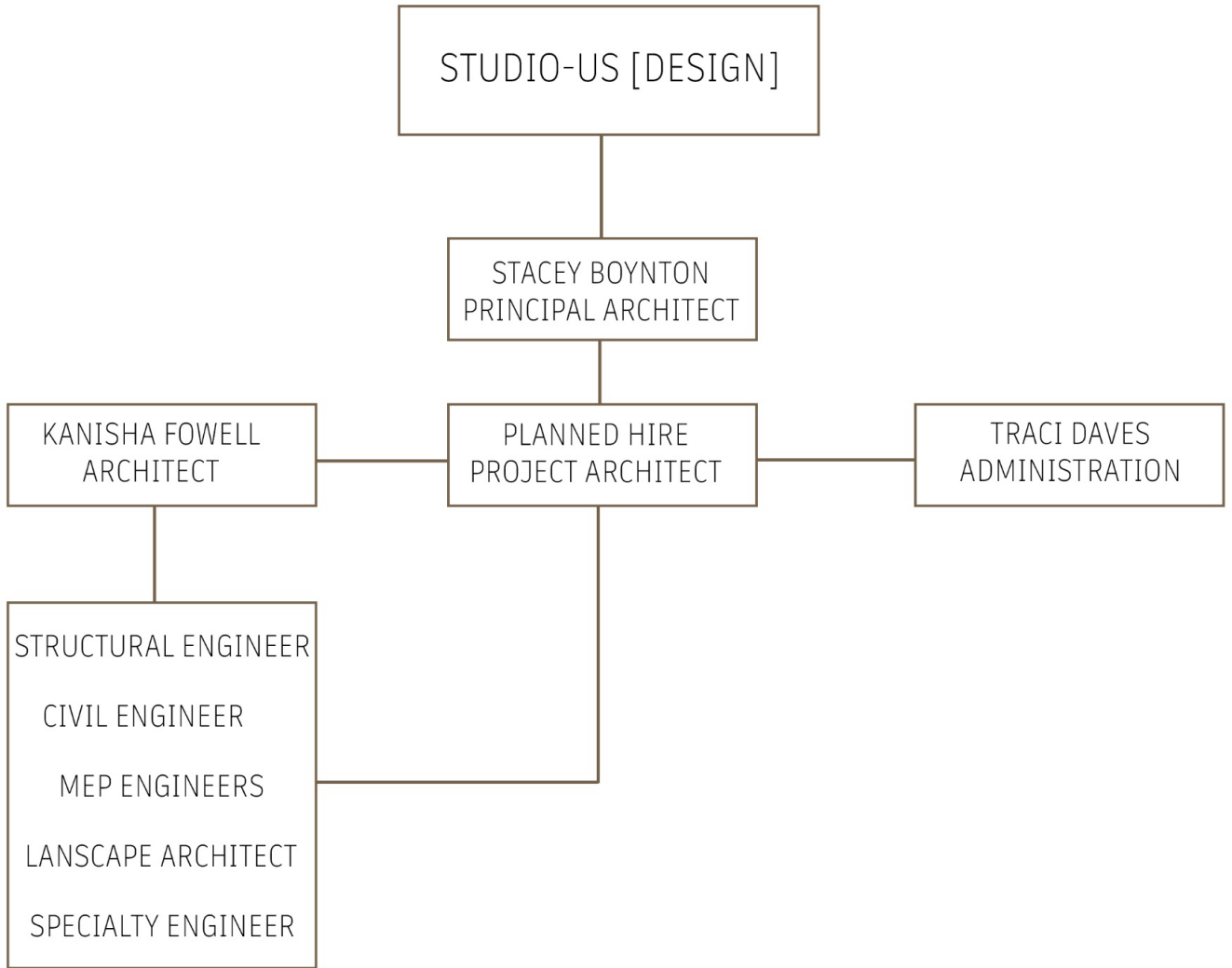
Consultant responsibilities include:

- Discipline-specific analysis and design
- Participation in milestone coordination meetings
- Integration of their work into architectural documents
- Use of the City's project management platform for submittals and communication

All consultant work is coordinated and reviewed under the Principal Architect to ensure cohesive, accurate, and complete deliverables.

STUDIO-US
[DESIGN]

PROJECT TEAM- ORGANIZATIONAL CHART



RESUME + LICENSES

Page 23

STACEY N. BOYNTON

AIA, NOMA

STUDIO-US [DESIGN]

361 N University Drive # 731, Plantation, FL 33324
(954) 740-7558
staceyboynton@studious-design.com
www.studio-us.work

EDUCATION

Masters of Architecture and
Community Design
University of South Florida
Tampa, Florida

RELATED ABROAD STUDIES

Kyoto and Tokyo, Japan 2009
Madrid and Barcelona, Spain 2007
Paris, France 2007

LEADERSHIP + SERVICE

AIA Florida IDEA Task Force Chair
(2025–2027)
AIA Fort Lauderdale Task Force member
(2024–2025)
So-Flo NOMA Immediate Past President
(2024)
City of Pompano Beach CRA Advisory
Board member
(2019–2021)
Black Architects in the Making (BAM)
Mentor

PROFESSIONAL SUMMARY

Licensed Architect and Founder of STUDIO-US, a multidisciplinary firm advancing design innovation through three pillars:

DESIGN (Architecture and Design with licenses in Florida and Texas)

LIVING (A line of home accessories)

LOOK (A future beauty venture currently in concept)

Experienced in leading architectural projects of varying size and scope, with a focus on tenant improvements and build-outs for office spaces, restaurants, and commercial environments.

Immediate Past President of So-Flo NOMA and active with AIA Florida and AIA Fort Lauderdale task forces, bringing proven leadership in strengthening professional pipelines and supporting inclusive economic growth.

PROFESSIONAL EXPERIENCE

STUDIO-US DESIGN | Founder & Principal Architect | South Florida | 2023 – Present

Lead architect for a design practice specializing in architectural projects and commercial spaces. Building on past experiences with office and restaurant projects, STUDIO-US Design is expanding into community spaces and larger-scale projects, with a focus on delivering design solutions with the utmost professionalism and enhance local communities.

Kravit Architectural | Senior Architectural Designer | Boca Raton, FL | 2017 – 2022

Oversaw tenant improvement projects throughout South Florida, from schematic design to construction administration. Managed client relationships, design development, and construction documentation. Selected Projects: CBS Interactive (Ft. Lauderdale), Radice Corporate Center, American Social Restaurants (Orlando, Boca Raton).

PAST EXPERIENCES

Freelance Architect / Designer – Dominican Republic (2016–2017)

Robertson Loia Roof | Junior Designer – Alpharetta, GA (2016)

Song & Associates | Designer/Intern Architect – West Palm Beach, FL (2014–2015)



Ron DeSantis, Governor

Melanie S. Griffin, Secretary



STATE OF FLORIDA
DEPARTMENT OF BUSINESS AND PROFESSIONAL REGULATION

BOARD OF ARCHITECTURE & INTERIOR DESIGN

THE ARCHITECT HEREIN IS LICENSED UNDER THE
PROVISIONS OF CHAPTER 481, FLORIDA STATUTES

BOYNTON, STACEY NORRELL

8540 NW 44TH COURT
LAUDERHILL FL 33351

LICENSE NUMBER: AR103798

EXPIRATION DATE: FEBRUARY 28, 2027

Always verify licenses online at MyFloridaLicense.com

ISSUED: 02/10/2025

Do not alter this document in any form.

This is your license. It is unlawful for anyone other than the licensee to use this document.



Ron DeSantis, Governor

Melanie S. Griffin, Secretary



STATE OF FLORIDA
DEPARTMENT OF BUSINESS AND PROFESSIONAL REGULATION

BOARD OF ARCHITECTURE & INTERIOR DESIGN

THE INTERIOR DESIGNER HEREIN IS REGISTERED UNDER THE
PROVISIONS OF CHAPTER 481, FLORIDA STATUTES

BOYNTON, STACEY NORRELL

8540 NW 44TH COURT
LAUDERHILL FL 33351

LICENSE NUMBER: ID7189

EXPIRATION DATE: FEBRUARY 28, 2027

Always verify licenses online at MyFloridaLicense.com

ISSUED: 12/11/2024

Do not alter this document in any form.

This is your license. It is unlawful for anyone other than the licensee to use this document.



[Previous On List](#) [Next On List](#) [Return to List](#)

[Events](#) **No Name History**

Detail by Entity Name

Florida Limited Liability Company
STUDIO-US DESIGN LLC

Filing Information

Document Number	L23000018653
FEI/EIN Number	
Date Filed	01/09/2023
Effective Date	01/09/2023
State	FL
Status	ACTIVE
Last Event	LC AMENDMENT
Event Date Filed	06/16/2023
Event Effective Date	NONE

Principal Address

Mailing Address

361 N University Dr
731
Plantation, FL 33324

STATEMENT OF SKILLS + EXPERIENCES

Page 27

STATEMENT OF SKILLS + EXPERIENCES

STATEMENT OF SKILLS & EXPERIENCE

STUDIO-US DESIGN offers a strong combination of technical capability, community-focused design, and disciplined project management. As a principal-led architectural practice, the firm brings clarity, precision, and responsiveness to every stage of a project, ensuring quality deliverables and strong alignment with stakeholders, city staff, and community representatives.

Core Technical Skills

- Architectural Design & Space Planning for commercial, restaurant, workplace, amenity, and ground-up projects
- Construction Documentation that is thorough, coordinated, and code-compliant
- Life Safety, ADA, and Zoning Compliance, with careful verification throughout all phases
- MEP, Structural, and Civil Coordination, supported by milestone cross-checking and QA/QC
- Construction Administration, including RFIs, submittals, field observations, and punch lists

Management & Communication Skills

- Direct involvement from a licensed architect on every Work Authorization
- Clear, proactive communication with City staff, consultants, and contractors
- Stakeholder meeting leadership, including early coordination with District Commissioners
- Use of digital platforms for project tracking, communication, document control, and scheduling

STUDIO-US
[DESIGN]

STATEMENT OF SKILLS + EXPERIENCES

Community & District Engagement Strengths

- Experience coordinating projects within Pompano Beach
- Strong relationships within CRA and community-based initiatives
- A commitment to equitable, contextual, and community-supported design outcomes

Experience Relevant to the RLI

- Ground-up commercial building (Big Tree BBQ – CRA)
- Restaurant and food service design (Parlor Doughnuts)
- Professional office build-out (Workman Law Firm)
- Amenity and workplace upgrades (Midgard 5,559 SF renovation)

Firm Strengths

- Principal-led oversight ensures accuracy and accountability
- Commitment to QA/QC through detailed reviews at every milestone
- Flexible, scalable staffing capacity, including a planned full-time architectural hire and planned administrative support within the next year
- Strong consultant relationships, allowing tailored teams for structural, MEP, civil, and specialty project types
- Cultural and community insight, particularly relevant to District 4 and CRA-based work

STUDIO-US DESIGN offers a combination of technical ability, communication excellence, and community-grounded perspective that aligns with the City's needs for continuing architectural services.

STUDIO-US
[DESIGN]

OFFICE LOCATION

OFFICE LOCATION

Primary Operational Location – Plantation, Florida

STUDIO-US DESIGN currently operates from a home-based office located in Plantation, Florida, which serves as the firm's primary operational workspace. This location supports daily production work, virtual coordination, and active management of ongoing projects throughout Broward County.

Given the firm's extensive involvement in Pompano Beach, including current CRA-related projects, community engagement efforts, and participation in local redevelopment initiatives, the Plantation office is used as a convenient and accessible hub for frequent travel to Pompano Beach.

Secondary Office Location – Miami, Florida

STUDIO-US DESIGN – Miami Workspace

9113 NW 22nd Avenue

Miami, FL

STUDIO-US DESIGN also maintains a physical workspace in Miami for creative development and administrative support. This location strengthens the firm's footprint within the Tri-County area and supports broader regional accessibility.

Planned Pompano Beach Office Expansion

Due to STUDIO-US DESIGN's growing portfolio of City and CRA-aligned work in Pompano Beach, as well as the firm's ongoing participation in community and district-based initiatives, the firm is planning to establish a dedicated office space in Pompano Beach within the next year.



LOCAL BUSINESS + CITY FORMS

Page 32

Local business and the requested city forms have been uploaded directly to the required locations.

FINANCIAL STATEMENTS

Page 33

FINANCIAL STATEMENTS

Procurement and Contracts Department
City of Pompano Beach
1010 NE 3 Avenue
Pompano Beach, FL 33060
RE: RLI 26-002 – CONTINUING CONTRACT FOR ARCHITECTURAL SERVICES
(CCNA)

To Whom It May Concern,

STUDIO-US DESIGN affirms that the firm is financially stable and fully capable of performing the architectural services outlined in RLI 26-002. The firm is in good standing with all financial institutions, maintains positive cash flow, and carries no bankruptcies, judgments, or financial conditions that would impair its ability to deliver City projects.

The following is a summary of STUDIO-US DESIGN's financial activity for Fiscal Year 2024:

Total Revenue: \$173,510

Total Expenses: \$92,262

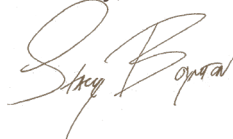
Net Income: \$81,248

Cash on Hand: \$30,000–\$40,000

These figures reflect active operations, stable working capital, and the firm's capacity to manage multiple concurrent projects. To further demonstrate financial stability, two recent business bank statements are attached with sensitive account information appropriately redacted.

STUDIO-US DESIGN is committed to responsible financial management and will continue to maintain the resources necessary to support the City's architectural needs under this solicitation.

Sincerely,



Stacey Boynton, AIA, NOMA

Principal Architect

STUDIO-US DESIGN



STUDIO-US
[DESIGN]



Learn more at www.wellsfargo.com/scams

*Availability may be affected by your mobile carrier's coverage area. Your mobile carrier's message and data rates may apply.

Statement period activity summary

Beginning balance on 10/1	\$25,155.72
Deposits/Credits	4,375.00
Withdrawals/Debits	- 14,525.03
Ending balance on 10/31	\$15,005.69

Account number:
STUDIO-US DESIGN LLC
 Florida account terms and conditions apply

Overdraft Protection

This account is not currently covered by Overdraft Protection. If you would like more information regarding Overdraft Protection and eligibility requirements please call the number listed on your statement or visit your Wells Fargo branch.

Transaction history

Date	Check Number	Description	Deposits/Credits	Withdrawals/Debits	Ending daily balance
10/1		Online Transfer to Studio-US Living LLC Business Checking xxxxxx0035 Ref #Ib0V4Ss29D on 10/01/25		100.00	25,055.72
10/2		Online Transfer to Studio-US Living LLC Business Checking xxxxxx0035 Ref #Ib0V5Lgvrn on 10/02/25		100.00	24,955.72
10/6		Online Transfer From Studio-US Living LLC Business Checking xxxxxx0035 Ref #Ib0V736Kfz on 10/06/25	300.00		
10/6		Fifth Third Bank Web Pay 251003 115710032025Gho Stacey Boynton		1,165.35	24,090.37
10/7		Deposit Made In A Branch/Store	1,200.00		
10/7		Online Transfer to Studio-US Living LLC Business Checking xxxxxx0035 Ref #Ib0V78M6Y3 on 10/07/25		200.00	
10/7		Zelle to Paola West on 10/07 Ref # Wfct0Zc9Wgx4 Big Tree Drc Payment		900.00	
10/7		Withdrawal Made In A Branch/Store		3,809.68	
10/7		Withdrawal Made In A Branch/Store		687.50	19,693.19
10/8		Online Transfer to Studio-US Living LLC Business Checking xxxxxx0035 Ref #Ib0V7Lzdtl on 10/08/25		100.00	19,593.19
10/9		Online Transfer to Studio-US Living LLC Business Checking xxxxxx0035 Ref #Ib0V7x8H5N on 10/09/25		1,000.00	18,593.19
10/10		Online Transfer From Studio-US Living LLC Business Checking xxxxxx0035 Ref #Ib0V8G4Kmz on 10/10/25	200.00		
10/10		Online Transfer From Studio-US Living LLC Business Checking xxxxxx0035 Ref #Ib0V8G5Gv5 on 10/10/25	125.00		
10/10		Zelle to Keb Studios on 10/10 Ref # Wfct0ZcIgl8Dk Photoshoot 102625		125.00	18,793.19
10/14		Online Transfer From Boynton S Everyday Checking xxxxxx3405 Ref #Ib0V9Nq6Yy on 10/14/25	1,000.00		
10/14		Online Transfer From Boynton S Everyday Checking xxxxxx3405 Ref #Ib0V9Q3N7T on 10/14/25	450.00		
10/14	1073	Check		3,262.50	
10/14	1074	Check		1,800.00	15,180.69
10/15		Online Transfer to Studio-US Living LLC Business Checking xxxxxx0035 Ref #Ib0Vb9Bfjv on 10/15/25		300.00	
10/15		Online Transfer to Studio-US Living LLC Business Checking xxxxxx0035 Ref #Ib0Vb9Bwxd on 10/15/25		100.00	14,780.69
10/20		Online Transfer From Studio-US Living LLC Business Checking xxxxxx0035 Ref #Ib0Vcn8V29 on 10/19/25	400.00		15,180.69
10/21		Zelle to Walker Donny on 10/21 Ref # Wfct0ZdqI62D Ruth Revisions		150.00	15,030.69
10/22		Online Transfer to Boynton S Way2Save Savings xxxxxx6840 Ref #Ib0Vdqrqvn on 10/22/25		100.00	14,930.69



Transaction History (continued)

Date	Check Number	Description	Deposits/ Credits	Withdrawals/ Debits	Ending daily balance
10/27		Online Transfer From Studio-US Living LLC Business Checking xxxxxx0035 Ref #lb0Vg4B3F6 on 10/26/25	100.00		
10/27		Zelle to Keb Studios on 10/26 Ref # Wfct0Zf9Npf4 Photo Balance		125.00	14,905.69
10/28		Online Transfer to Studio-US Living LLC Business Checking xxxxxx0035 Ref #lb0Vgpv9CF on 10/28/25		300.00	14,605.69
10/29		Online Transfer From Boynton S Everyday Checking xxxxxx3405 Ref #lb0Vh2Mfmt on 10/29/25	600.00		
10/29		Online Transfer to Studio-US Living LLC Business Checking xxxxxx0035 Ref #lb0Vh2Cm59 on 10/29/25		100.00	15,105.69
10/30		Online Transfer to Boynton S Everyday Checking xxxxxx3405 Ref #lb0VhVnyd on 10/30/25		100.00	15,005.69
Totals			\$4,375.00	\$14,525.03	

The Ending Daily Balance does not reflect any pending withdrawals or holds on deposited funds that may have been outstanding on your account when your transactions posted. If you had insufficient available funds when a transaction posted, fees may have been assessed.

Summary of checks written (checks listed are also displayed in the preceding Transaction history)

Number	Date	Amount	Number	Date	Amount
1073	10/14	3,262.50	1074	10/14	1,800.00

Monthly service fee summary

For a complete list of fees and detailed account information, see the disclosures applicable to your account or talk to a banker. Go to wellsfargo.com/feefaq for a link to these documents, and answers to common monthly service fee questions.

Fee period 10/01/2025 - 10/31/2025	Standard monthly service fee \$10.00	You paid \$0.00
How to avoid the monthly service fee	Minimum required	This fee period
Have any ONE of the following each fee period		
• Average ledger balance	\$1,000.00	\$17,761.00 <input type="checkbox"/>
• Minimum daily balance	\$500.00	\$14,605.69 <input type="checkbox"/>

C1/C1

Account transaction fees summary

Service charge description	Units used	Units included	Excess units	Service charge per excess units (\$)	Total service charge (\$)
Cash Deposited (\$)	1,200	5,000	0	0.0030	0.00
Transactions	20	100	0	0.50	0.00
Total service charges					\$0.00



Statement period activity summary

Beginning balance on 11/1	\$15,005.69
Deposits/Credits	44,050.00
Withdrawals/Debits	- 17,591.77
Ending balance on 11/30	\$41,463.92

Account number:

STUDIO-US DESIGN LLC

Florida account terms and conditions apply

Overdraft Protection

This account is not currently covered by Overdraft Protection. If you would like more information regarding Overdraft Protection and eligibility requirements please call the number listed on your statement or visit your Wells Fargo branch.

Transaction history

Date	Check Number	Description	Deposits/ Credits	Withdrawals/ Debits	Ending daily balance
11/4		Online Transfer to Studio-US Living LLC Business Checking xxxxxx0035 Ref #lb0Vkr8Yvz on 11/04/25		200.00	
11/4		Fifth Third Bank Web Pay 251103 115711032025Gho Stacey Boynton		1,165.35	13,640.34
11/7		Online Transfer to Studio-US Living LLC Business Checking xxxxxx0035 Ref #lb0Vlq75Rg on 11/07/25		260.00	13,380.34
11/10		Online Transfer to Studio-US Living LLC Business Checking xxxxxx0035 Ref #lb0Vm5Chng on 11/08/25		2,000.00	
11/10		Zelle to Woodside Drumen on 11/10 Ref # Wfct0ZgwlmI3 Lundy Sign		75.00	11,305.34
11/12		Mobile Deposit : Ref Number :507120484661	1,050.00		
11/12		Online Transfer to Boynton S Everyday Checking xxxxxx3405 Ref #lb0Vnns5W6 on 11/12/25		100.00	12,255.34
11/13		Cityofpompano AP Trans 0062691 Studio US Design	43,000.00		
11/13		Online Transfer to Boynton S Ref #lb0Vnsk2Mj Way2Save Savings Big Tree Fee		5,000.00	
11/13		Online Transfer to Studio-US Living LLC Business Checking xxxxxx0035 Ref #lb0Vnt3Rzg on 11/13/25		525.00	
11/13		Online Transfer to Boynton S Everyday Checking xxxxxx3405 Ref #lb0Vnvs79T on 11/13/25		1,485.00	48,245.34
11/17	1075	Check		3,300.00	
11/17		Check		2,662.50	42,282.84
11/18		Purchase authorized on 11/17 Eb *Design Awards 801-413-7200 CA 5385321595163065 Card 9619		193.92	42,088.92
11/26		Online Transfer to Studio-US Living LLC Business Checking xxxxxx0035 Ref #lb0Vtncp9Z on 11/26/25		625.00	41,463.92
Totals			\$44,050.00	\$17,591.77	

The Ending Daily Balance does not reflect any pending withdrawals or holds on deposited funds that may have been outstanding on your account when your transactions posted. If you had insufficient available funds when a transaction posted, fees may have been assessed.

Summary of checks written (checks listed are also displayed in the preceding Transaction history)

Number	Date	Amount	Number	Date	Amount
	11/17	2,662.50	1075	11/17	3,300.00

Statement period activity summary

Beginning balance on 11/1	\$15,005.69
Deposits/Credits	44,050.00
Withdrawals/Debits	- 17,591.77
Ending balance on 11/30	\$41,463.92

Account number:

STUDIO-US DESIGN LLC*Florida account terms and conditions apply*
Overdraft Protection

This account is not currently covered by Overdraft Protection. If you would like more information regarding Overdraft Protection and eligibility requirements please call the number listed on your statement or visit your Wells Fargo branch.

Transaction history

Date	Check Number	Description	Deposits/ Credits	Withdrawals/ Debits	Ending daily balance
11/4		Online Transfer to Studio-US Living LLC Business Checking xxxxxx0035 Ref #lb0Vkr8Yvz on 11/04/25		200.00	
11/4		Fifth Third Bank Web Pay 251103 115711032025Gho Stacey Boynton		1,165.35	13,640.34
11/7		Online Transfer to Studio-US Living LLC Business Checking xxxxxx0035 Ref #lb0Vlq75Rg on 11/07/25		260.00	13,380.34
11/10		Online Transfer to Studio-US Living LLC Business Checking xxxxxx0035 Ref #lb0Vm5Chng on 11/08/25		2,000.00	
11/10		Zelle to Woodside Drumen on 11/10 Ref # Wfct0Zgwlm3 Lundy Sign		75.00	11,305.34
11/12		Mobile Deposit : Ref Number :507120484661	1,050.00		
11/12		Online Transfer to Boynton S Everyday Checking xxxxxx3405 Ref #lb0Vnns5W6 on 11/12/25		100.00	12,255.34
11/13		Cityofpompano AP Trans 0062691 Studio US Design	43,000.00		
11/13		Online Transfer to Boynton S Ref #lb0Vnsk2Mj Way2Save Savings Big Tree Fee		5,000.00	
11/13		Online Transfer to Studio-US Living LLC Business Checking xxxxxx0035 Ref #lb0Vnt3Rzg on 11/13/25		525.00	
11/13		Online Transfer to Boynton S Everyday Checking xxxxxx3405 Ref #lb0Vnvs79T on 11/13/25		1,485.00	48,245.34
11/17	1075	Check		3,300.00	
11/17		Check		2,662.50	42,282.84
11/18		Purchase authorized on 11/17 Eb *Design Awards 801-413-7200 CA S385321595163065 Card 9619		193.92	42,088.92
11/26		Online Transfer to Studio-US Living LLC Business Checking xxxxxx0035 Ref #lb0Vtncp9Z on 11/26/25		625.00	41,463.92
Totals			\$44,050.00	\$17,591.77	

The Ending Daily Balance does not reflect any pending withdrawals or holds on deposited funds that may have been outstanding on your account when your transactions posted. If you had insufficient available funds when a transaction posted, fees may have been assessed.

Summary of checks written (checks listed are also displayed in the preceding Transaction history)

Number	Date	Amount	Number	Date	Amount
	11/17	2,662.50	1075	11/17	3,300.00



Monthly service fee summary

For a complete list of fees and detailed account information, see the disclosures applicable to your account or talk to a banker. Go to wellsfargo.com/feefaq for a link to these documents, and answers to common monthly service fee questions.

Fee period 11/01/2025 - 11/30/2025	Standard monthly service fee \$10.00	You paid \$0.00
How to avoid the monthly service fee	Minimum required	This fee period
Have any ONE of the following each fee period		
• Average ledger balance	\$1,000.00	\$31,341.00 <input type="checkbox"/>
• Minimum daily balance	\$500.00	\$11,305.34 <input type="checkbox"/>

The Monthly service fee summary fee period ending date shown above includes a Saturday, Sunday, or holiday which are non-business days. Transactions occurring after the last business day of the month will be included in your next fee period.

C1/C1

Account transaction fees summary

Service charge description	Units used	Units included	Excess units	Service charge per excess units (\$)	Total service charge (\$)
Cash Deposited (\$)	0	5,000	0	0.0030	0.00
Transactions	13	100	0	0.50	0.00
Total service charges					\$0.00



IMPORTANT ACCOUNT INFORMATION

NEW YORK CITY CUSTOMERS ONLY -- Pursuant to New York City regulations, we request that you contact us at 1-800-TO WELLS (1-800-869-3557) to share your language preference.

