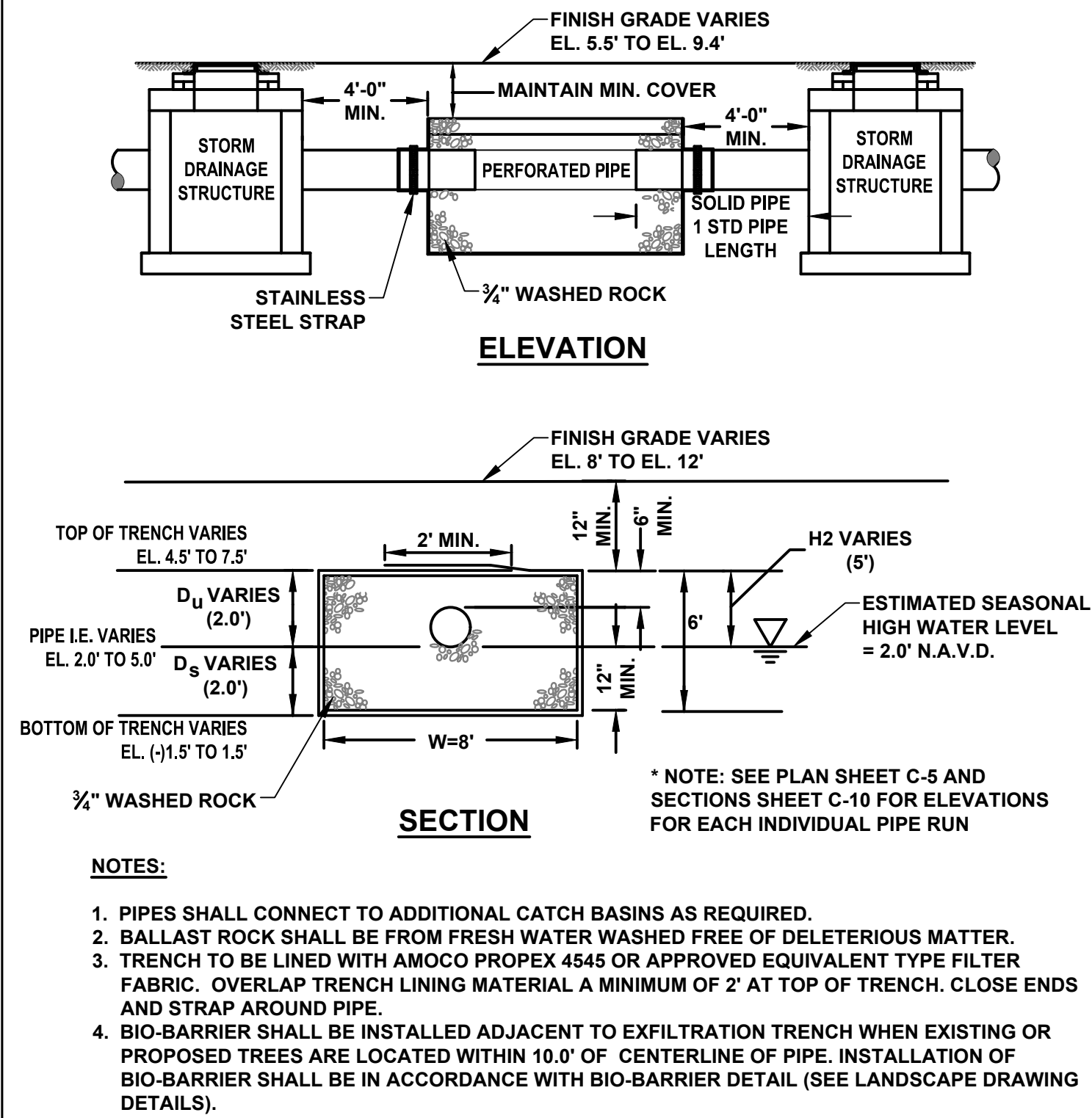
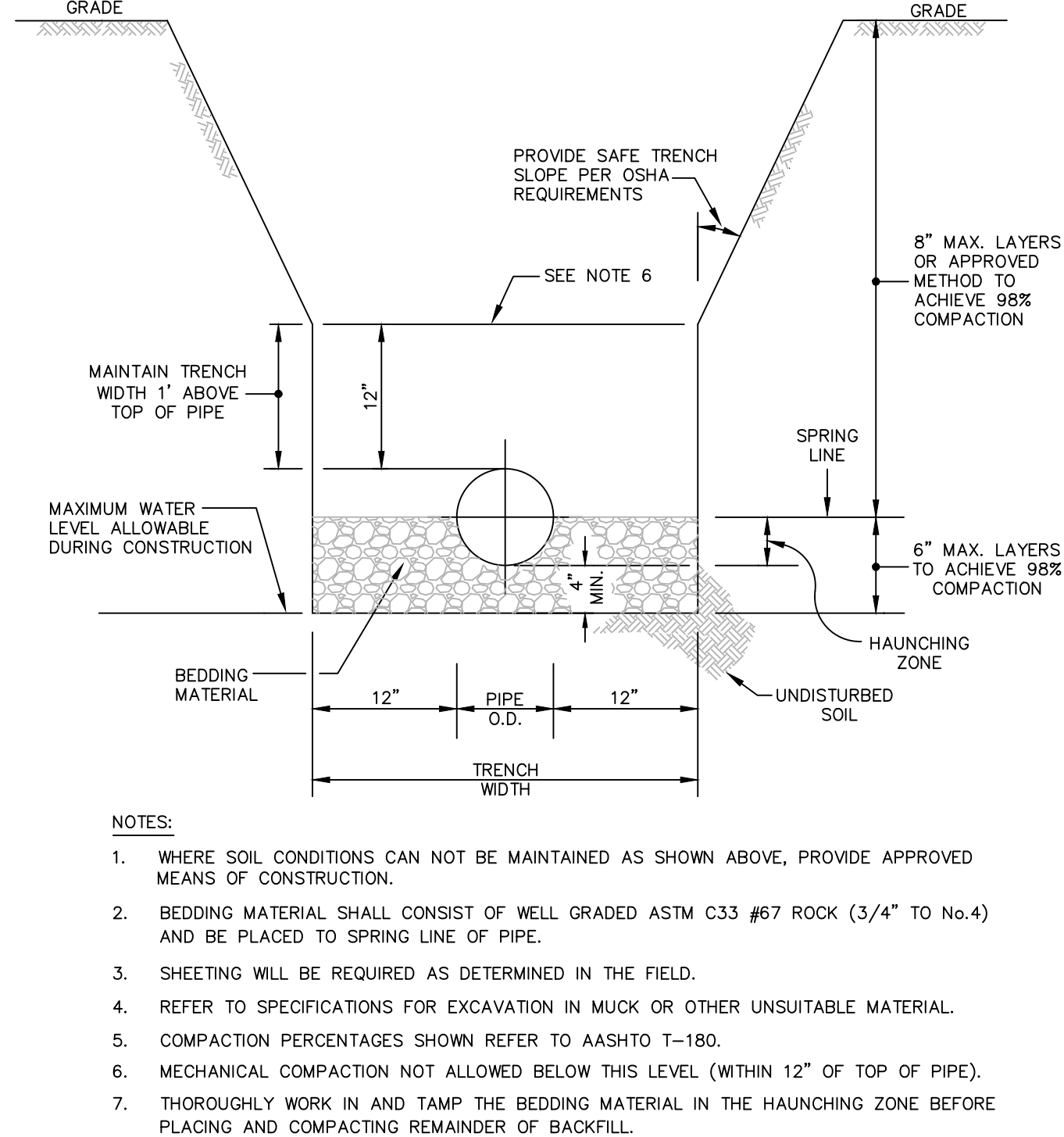


\\carter\02\Eng\Projects\2024\24-0055-PGDD.dwg [C-7] May 27, 2025 9:23am TRUBINO



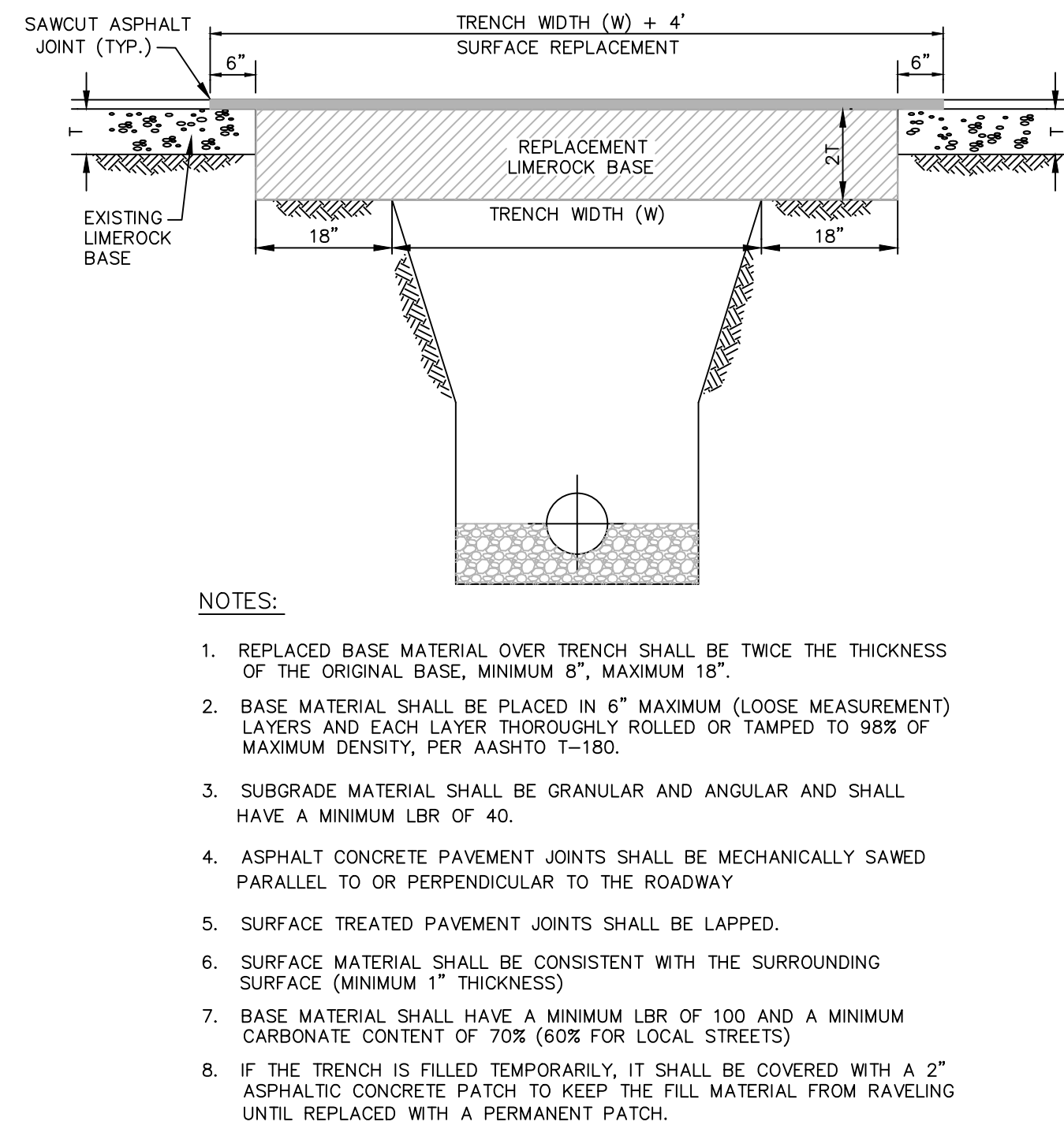
EXFILTRATION TRENCH DETAIL

SCALE: N.T.S.



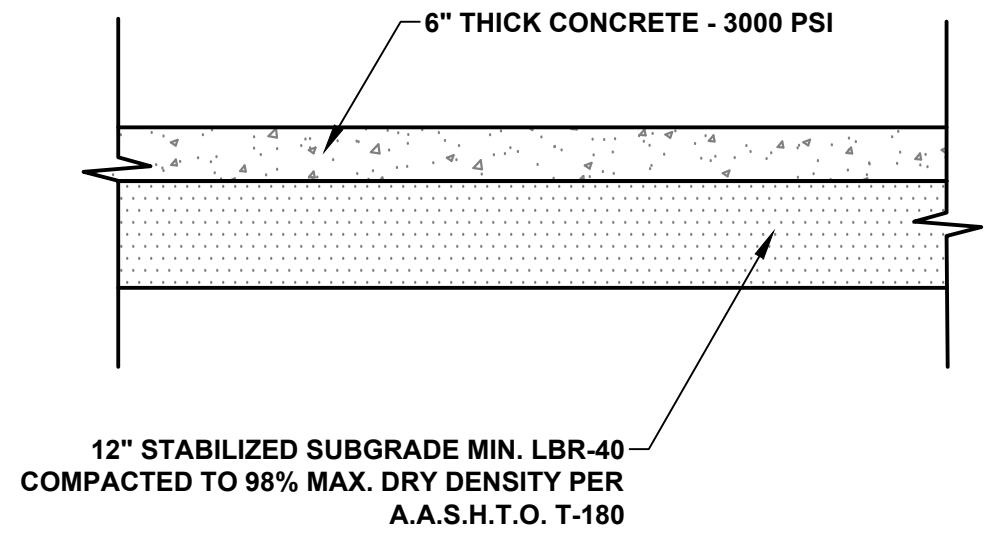
TRENCH DETAIL

N.T.S.



PAVEMENT RESTORATION DETAIL

N.T.S.



TYPICAL CONCRETE DRIVEWAY

SCALE: N.T.S.

DRC

PZ24-12000026
07.02.2025

1501 WEST ATLANTIC BLVD.
POMPANO BEACH, FLORIDA
PREPARED FOR:
KAJA PROPERTIES INC.

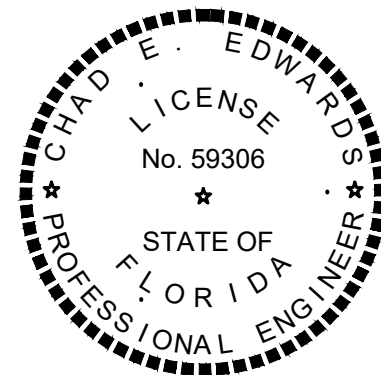
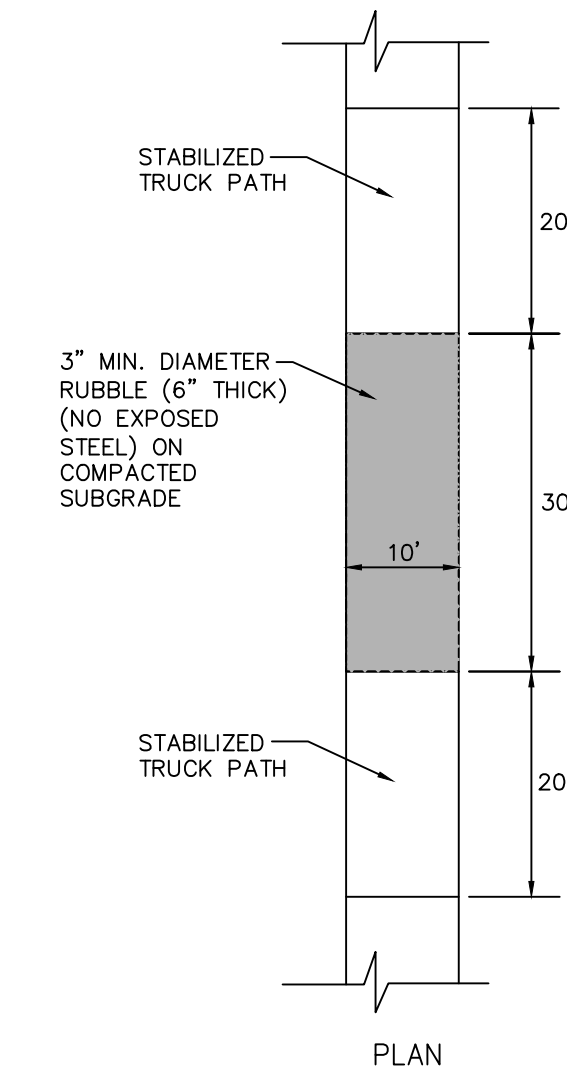
DETAILS

CHAD E. EDWARDS, P.E.
FLORIDA LICENSE No. 59306
2025-05-27
PROJECT NO.
24-0055-001-01

C-7
SHEET 7 OF 14

TRUCK RUMBLE STRIP AREA

SCALE: N.T.S.



This document has been digitally signed and sealed by Chad Everett Edwards, P.E. on the date indicated here. Printed copies of this document are not considered signed and sealed and the signature must be verified on any electronic copies.