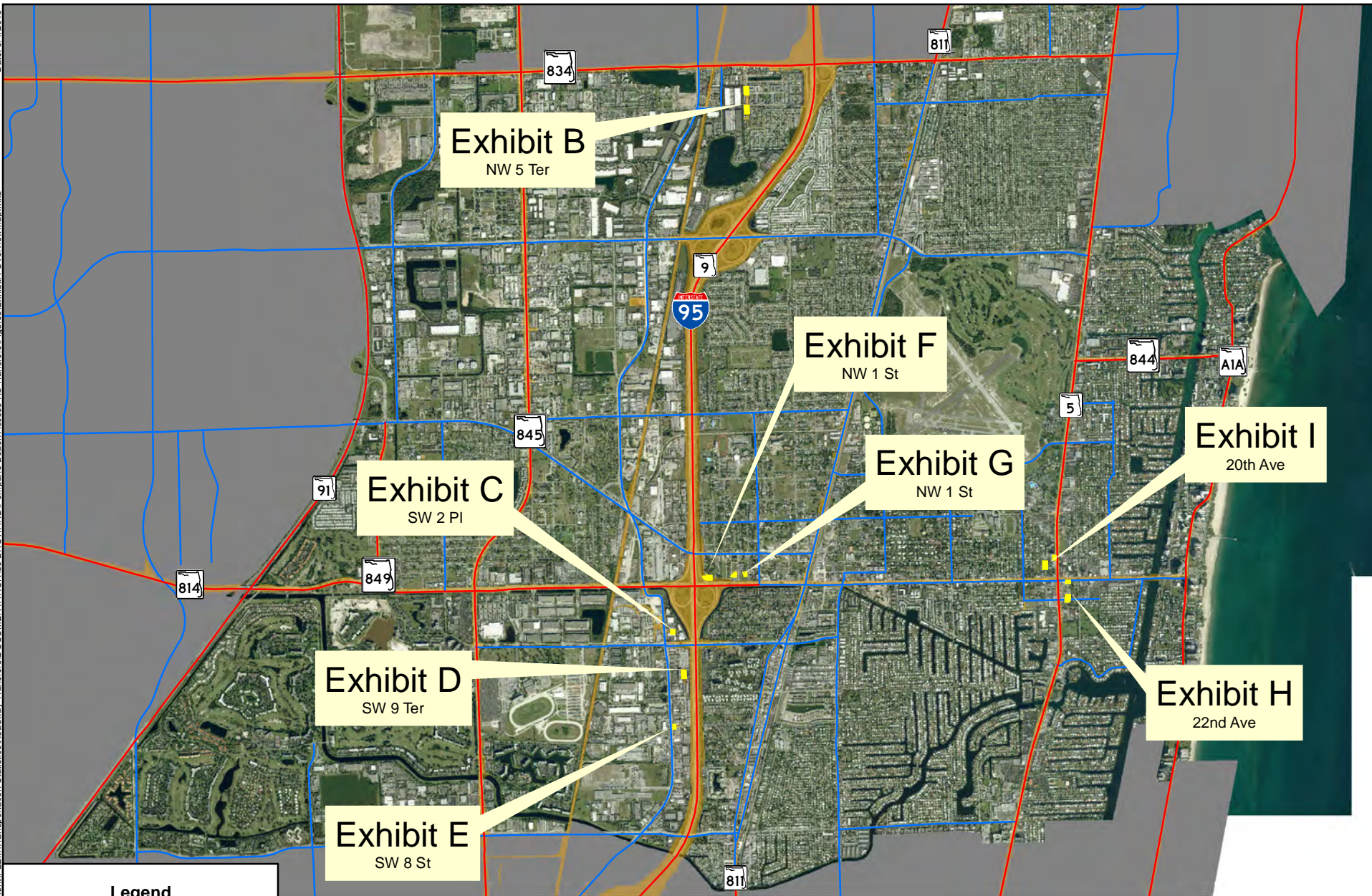


# Exhibits A-I



### Legend

- Pending Roadway Transfer To City
- On System Roadways
- Off System Roadways
- FDOT ROW
- Other City Limits

This data is intended for the use of FDOT personnel and authorized consultants. The data has been compiled from a variety of sources and there is no guarantee of its accuracy, completeness, reliability or suitability for any particular purpose or any representation or warranty, express or implied, by the Florida Department of Transportation concerning the data. It is the responsibility of the user to use the data appropriately and in accordance with its limits. Contact the source agency or FDOT to determine if the data is accurate and correct.

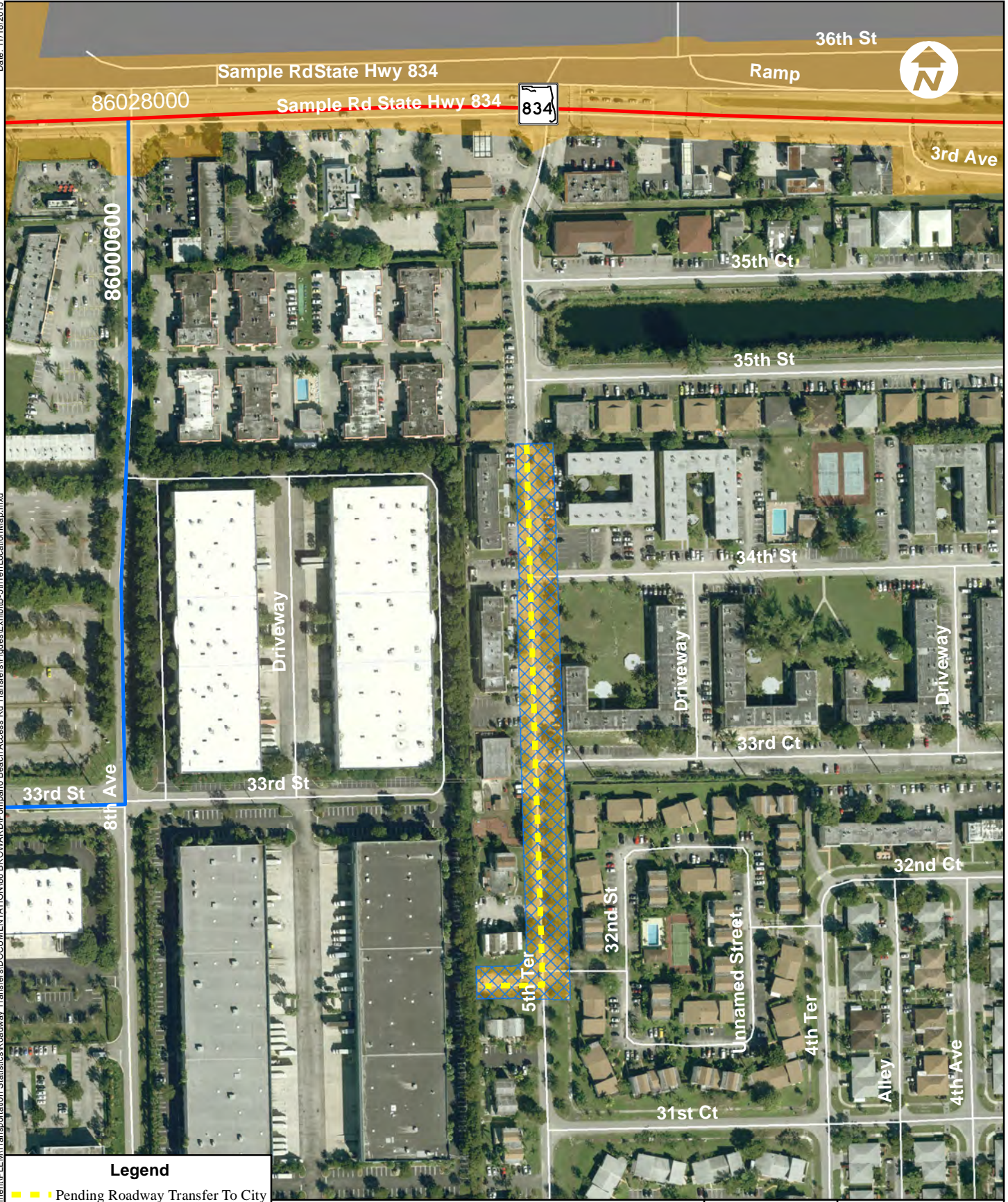


0.5 0.25 0 0.5  
Miles



**Exhibit A**  
Overview Map  
Pending Roadway  
Transfers To City  
Pompano Beach, FL

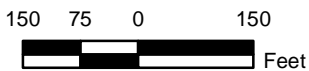




**Legend**

- Yellow dashed line: Pending Roadway Transfer To City
- Red line: On System Roadways
- Blue line: Off System Roadways
- Blue cross-hatch: Proposed ROW Transfer To City
- Orange: FDOT ROW
- Grey: Other City Limits

This data is intended for the use of FDOT personnel and authorized consultants. The data has been compiled from a variety of sources and there is no guarantee of its accuracy, completeness, reliability or suitability for any particular purpose or any representation or warranty, express or implied, by the Florida Department of Transportation concerning the data. It is the responsibility of the user to use the data appropriately and in accordance with its limits. Contact the source agency or FDOT to determine if the data is accurate and correct.



**Exhibit B**

Location Map  
NW 5th Ter

Pompano Beach, FL

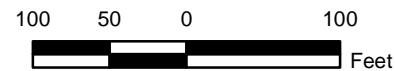




**Legend**

- Off System Roadways
- Proposed ROW Transfer To City
- FDOT ROW
- Broward County Parcels

This data is intended for the use of FDOT personnel and authorized consultants. The data has been compiled from a variety of sources and there is no guarantee of its accuracy, completeness, reliability or suitability for any particular purpose or any representation or warranty, express or implied, by the Florida Department of Transportation concerning the data. It is the responsibility of the user to use the data appropriately and in accordance with its limits. Contact the source agency or FDOT to determine if the data is accurate and correct.

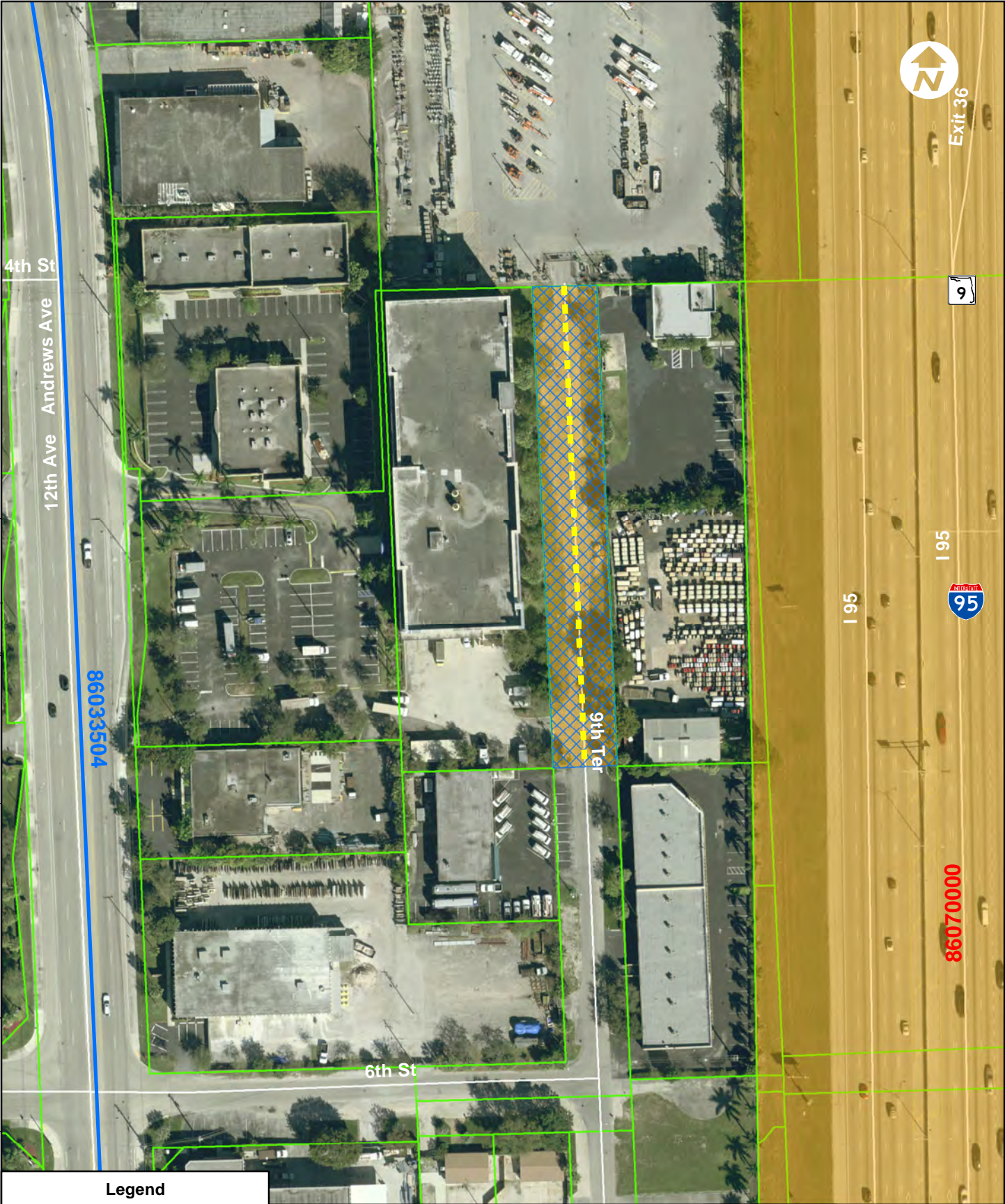


**Exhibit C**

Location Map  
2nd PI

Pompano Beach, FL

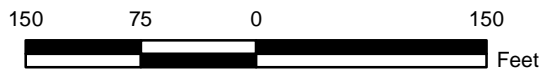




### Legend

- Pending Roadway Transfer To City
- On System Roadways
- Off System Roadways
- Proposed ROW Transfer To City
- FDOT ROW
- Broward County Parcels

This data is intended for the use of FDOT personnel and authorized consultants. The data has been compiled from a variety of sources and there is no guarantee of its accuracy, completeness, reliability or suitability for any particular purpose or any representation or warranty, express or implied, by the Florida Department of Transportation concerning the data. It is the responsibility of the user to use the data appropriately and in accordance with its limits. Contact the source agency or FDOT to determine if the data is accurate and correct.

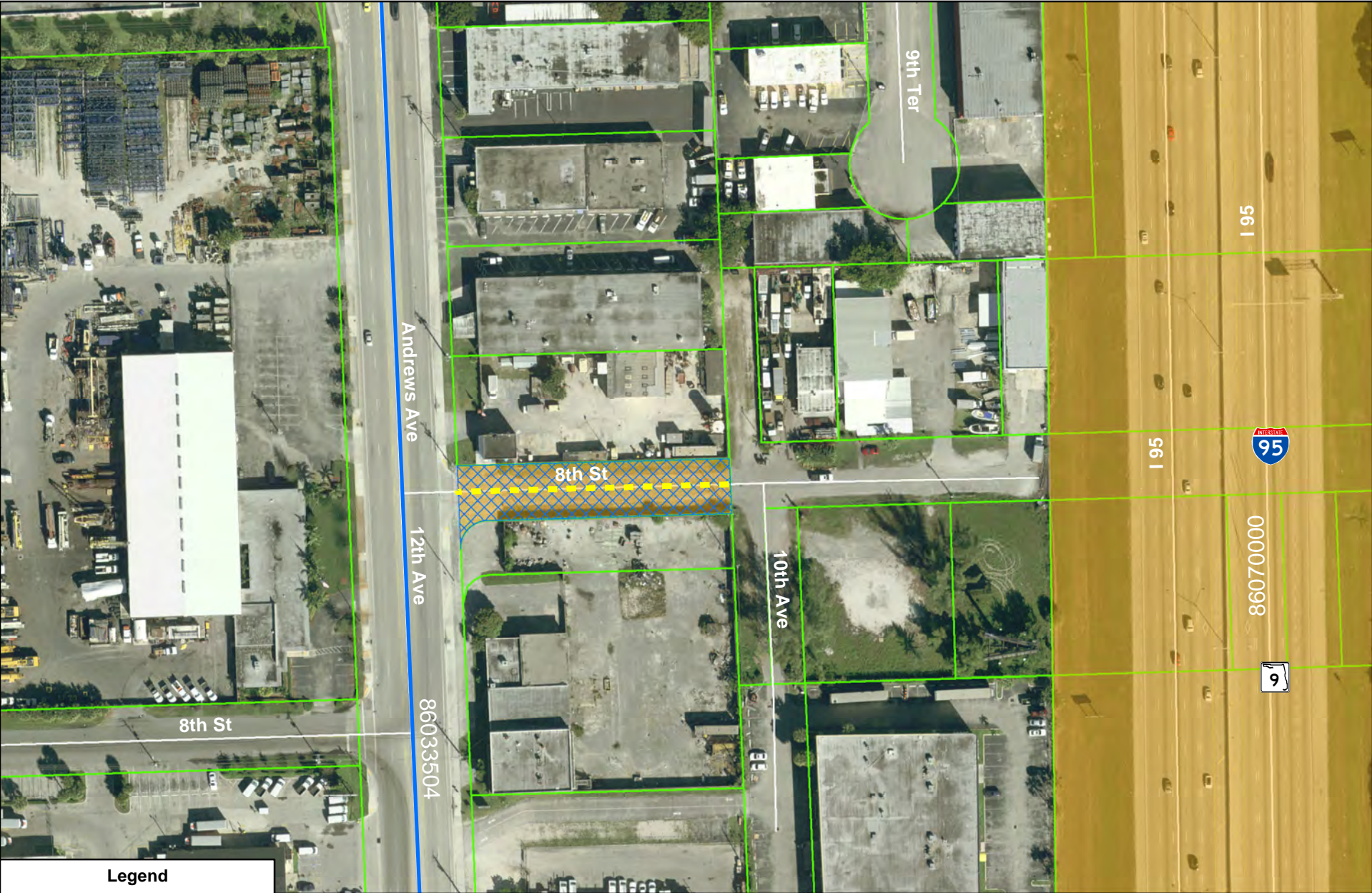


### Exhibit D

Location Map  
9th Ter

Pompano Beach, FL





**Legend**

- Yellow dashed line: Pending Roadway Transfer To City
- Red solid line: On System Roadways
- Blue solid line: Off System Roadways
- Blue cross-hatch pattern: Proposed ROW Transfer To City
- Orange solid line: FDOT ROW
- Green outline: Broward County Parcels

This data is intended for the use of FDOT personnel and authorized consultants. The data has been compiled from a variety of sources and there is no guarantee of its accuracy, completeness, reliability or suitability for any particular purpose or any representation or warranty, express or implied, by the Florida Department of Transportation concerning the data. It is the responsibility of the user to use the data appropriately and in accordance with its limits. Contact the source agency or FDOT to determine if the data is accurate and correct.

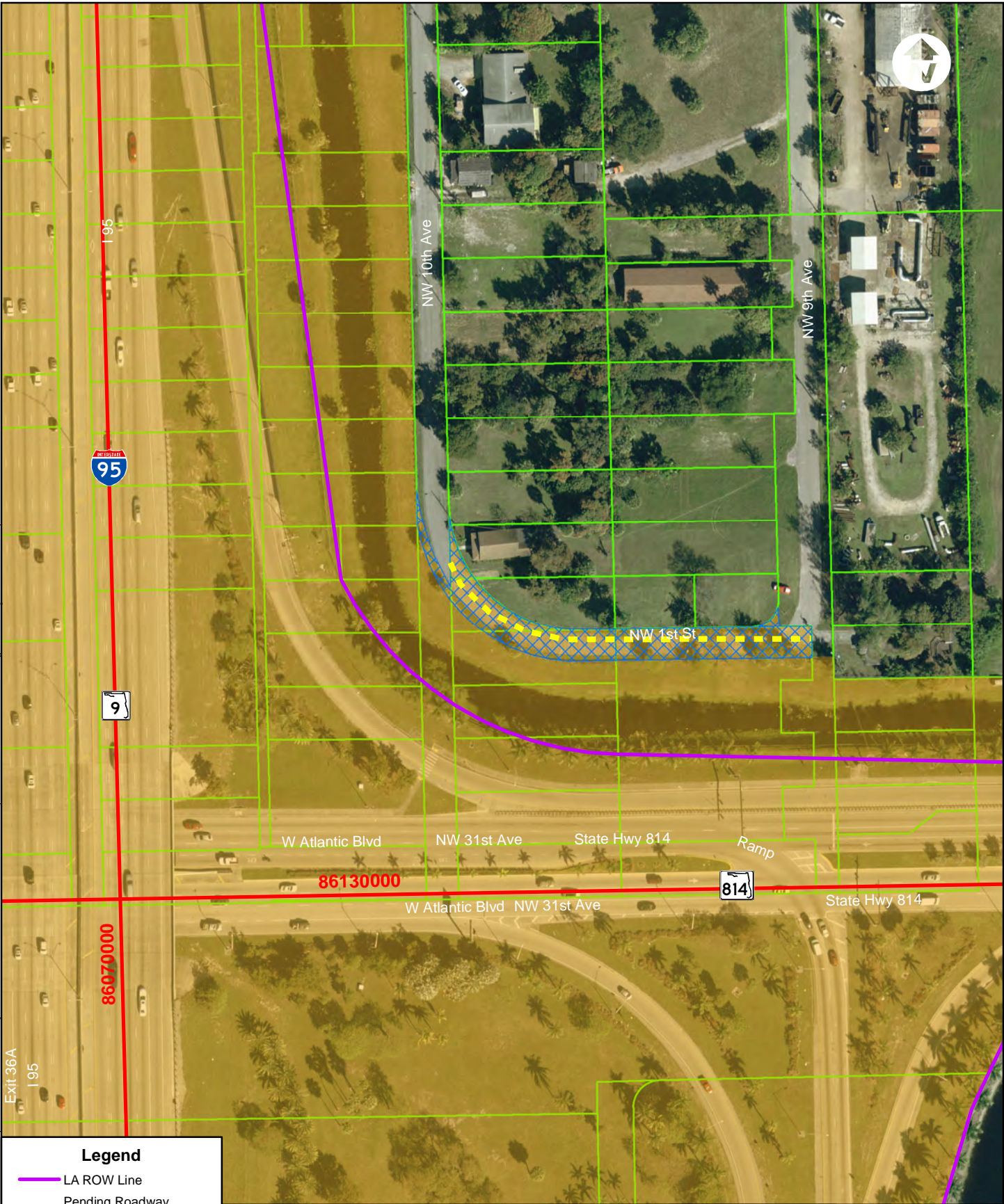


**Exhibit E**

Location Map  
8th St

Pompano Beach, FL





### Legend

- LA ROW Line
- Pending Roadway Transfers to City
- On System Roadways
- Proposed ROW Transfer To City
- FDOT ROW
- Broward County Parcels

This data is intended for the use of FDOT personnel and authorized consultants. The data has been compiled from a variety of sources and there is no guarantee of its accuracy, completeness, reliability or suitability for any particular purpose or any representation or warranty, express or implied, by the Florida Department of Transportation concerning the data. It is the responsibility of the user to use the data appropriately and in accordance with its limits. Contact the source agency or FDOT to determine if the data is accurate and correct.

0 125 250  
Feet

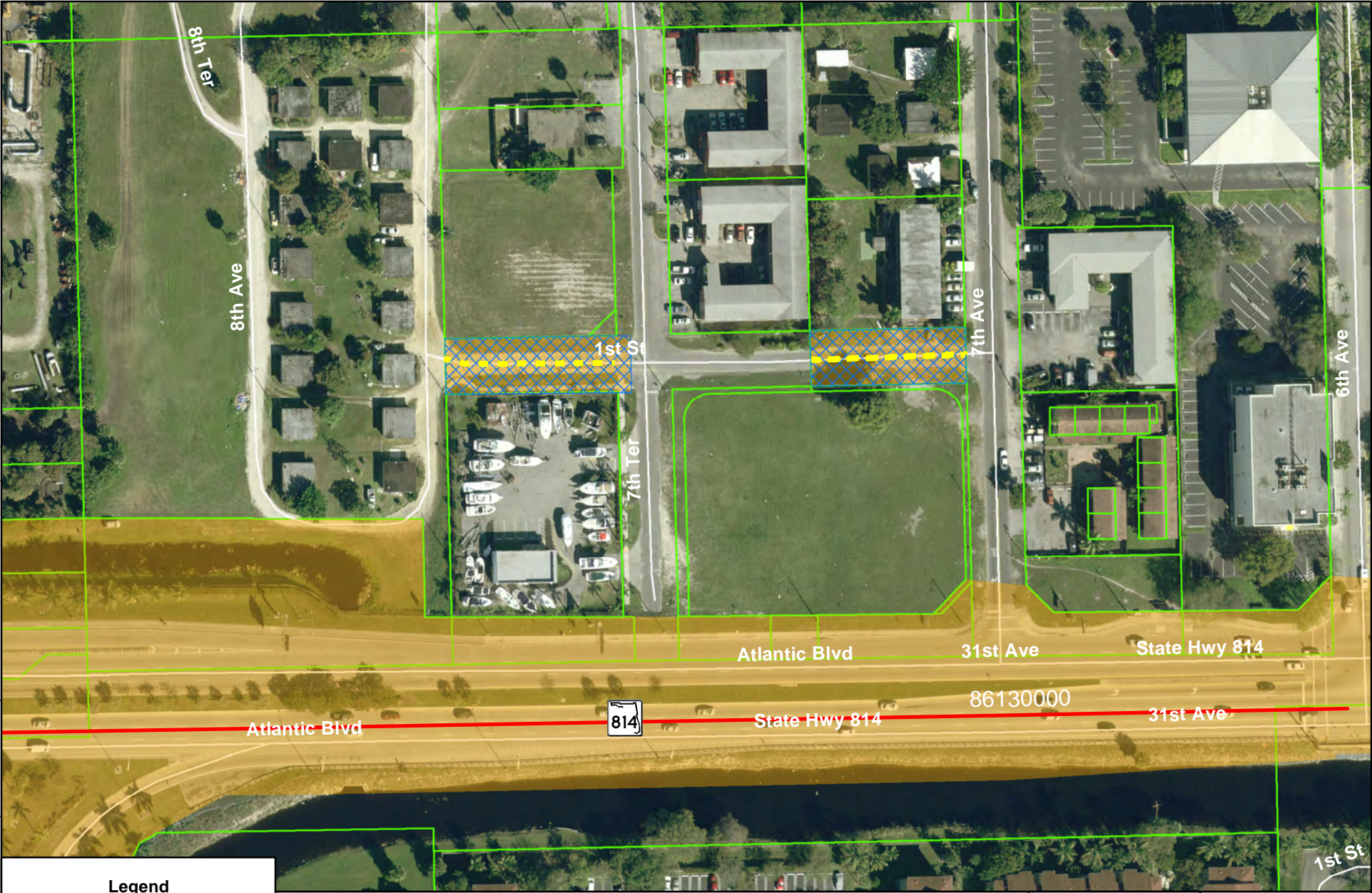


### Exhibit F

Location Map  
1st St

Pompano Beach, FL





**Legend**

- Pending Roadway Transfer To City
- On System Roadways
- Proposed ROW Transfer To City
- FDOT ROW
- Broward County Parcels

This data is intended for the use of FDOT personnel and authorized consultants. The data has been compiled from a variety of sources and there is no guarantee of its accuracy, completeness, reliability or suitability for any particular purpose or any representation or warranty, express or implied, by the Florida Department of Transportation concerning the data. It is the responsibility of the user to use the data appropriately and in accordance with its limits. Contact the source agency or FDOT to determine if the data is accurate and correct.

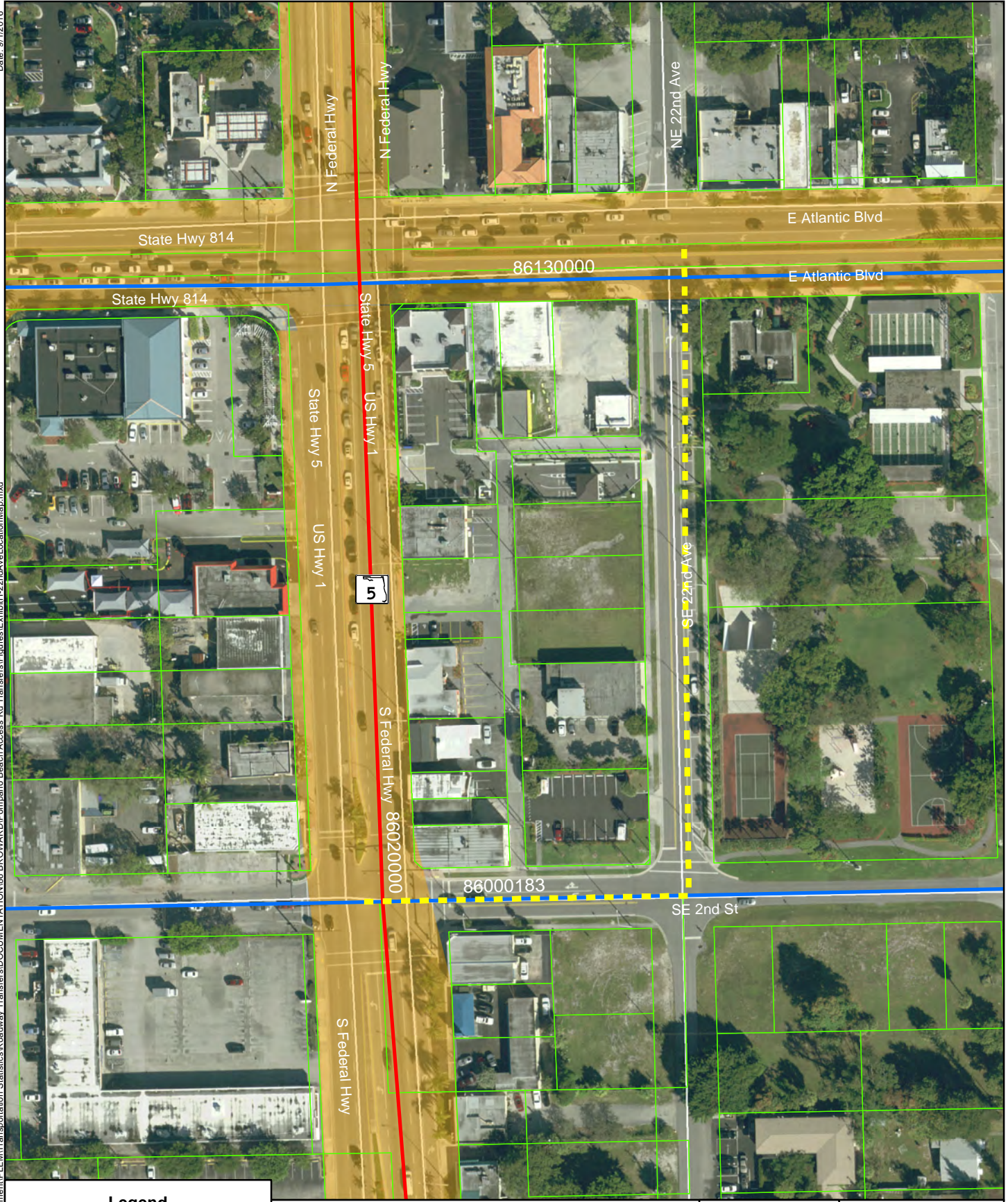


**Exhibit G**

Location Map  
1st St

Pompano Beach, FL

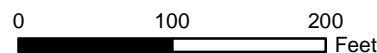




### Legend

- Yellow dashed line: Pending Roadway Transfer To City
- Red solid line: On System Roadways
- Blue solid line: Off System Roadways
- Green outline: Broward County Parcels
- Orange fill: FDOT ROW

This data is intended for the use of FDOT personnel and authorized consultants. The data has been compiled from a variety of sources and there is no guarantee of its accuracy, completeness, reliability or suitability for any particular purpose or any representation or warranty, express or implied, by the Florida Department of Transportation concerning the data. It is the responsibility of the user to use the data appropriately and in accordance with its limits. Contact the source agency or FDOT to determine if the data is accurate and correct.

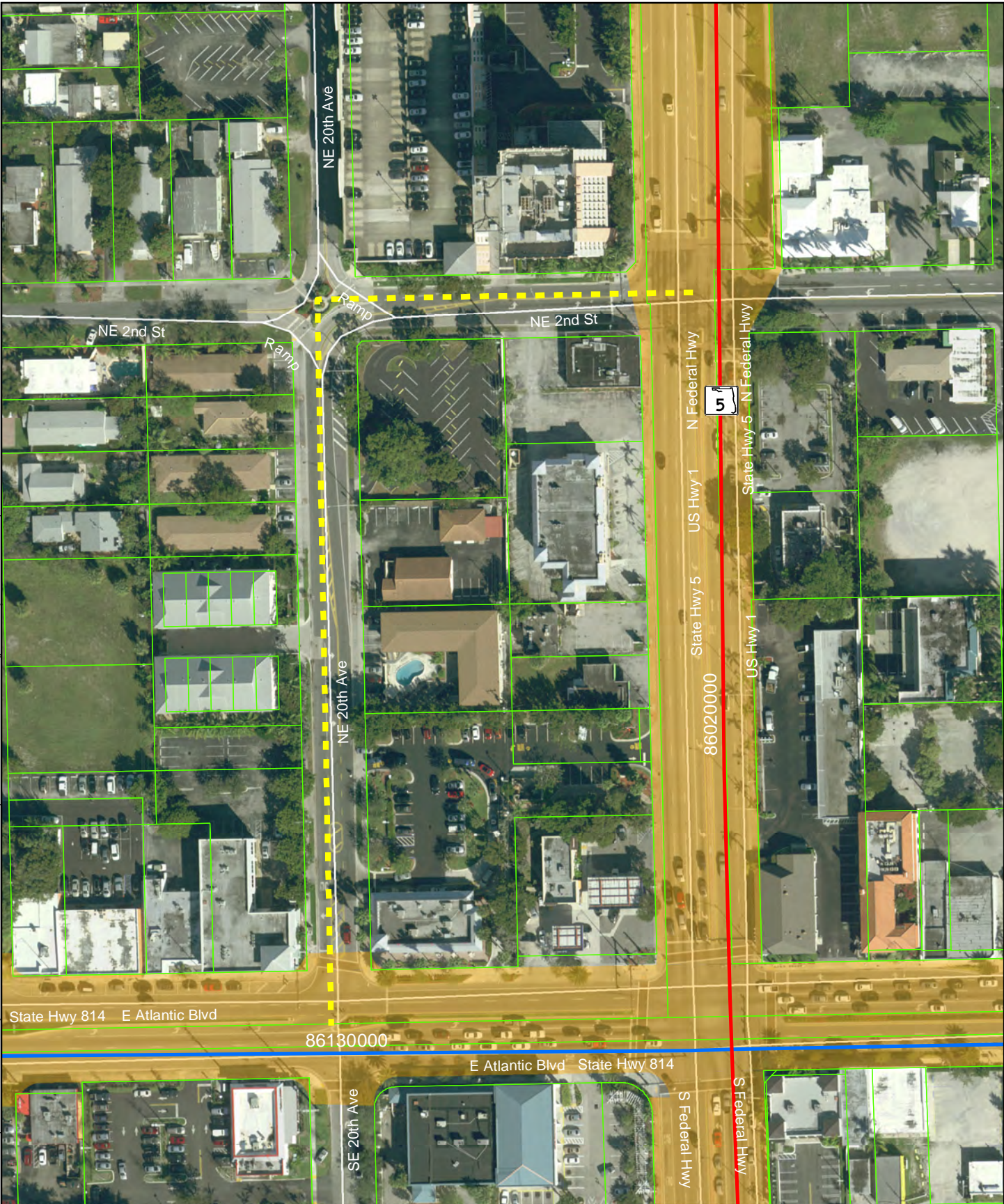


### Exhibit H

Location Map  
SE 22nd Ave

Pompano Beach, FL





### Legend

- Pending Roadway Transfer To City
- On System Roadways
- Off System Roadways
- Broward County Parcels
- FDOT ROW

This data is intended for the use of FDOT personnel and authorized consultants. The data has been compiled from a variety of sources and there is no guarantee of its accuracy, completeness, reliability or suitability for any particular purpose or any representation or warranty, express or implied, by the Florida Department of Transportation concerning the data. It is the responsibility of the user to use the data appropriately and in accordance with its limits. Contact the source agency or FDOT to determine if the data is accurate and correct.

0 100 200  
Feet



### Exhibit I

Location Map  
NE 20th Ave

Pompano Beach, FL



Exhibit J

(hold for Resolution)



# Exhibit K





## *Florida Department of Transportation*

**RICK SCOTT**  
GOVERNOR

3400 West Commercial Blvd.  
Fort Lauderdale, FL 33309

**JIM BOXOLD**  
SECRETARY

December 30, 2015

Mr. Robert Bendus, Director and  
State Historic Preservation Officer  
Office of Cultural and Historical Programs  
Division of Historical Resources  
500 South Bronough Street  
Tallahassee, Florida 32301

Subject:       **Request for Review**  
Cultural Resource Assessment Survey  
Pompano Beach Jurisdictional Roadway Transfers  
Broward County, Florida

Attention: Ginny Jones

Dear Ms. Jones;

The FDOT, District 4 proposes to transfer jurisdiction of portions of NW 5th Terrace/NW 32nd Street, SW 2nd Place, SW 9th Terrace, SW 8th Street, No Name Street, NW 1st Street, NE 20th Avenue/NE 2nd Street, and SE 22nd Avenue/SE 2nd Street to the City of Pompano Beach. No other project improvements or activities are associated with this transfer.

Both a desktop analysis and a reconnaissance survey were performed for the proposed jurisdictional transfers of portions of the eight roads. The objective of this survey was to determine whether any archaeological or historical cultural resources eligible for listing in the National Register were located within the project corridors.

The desktop analysis determined that the Areas of Potential Effect (APEs) of the eight road transfers have a low probability for containing intact archaeological sites. This assessment is based on the absence of previously recorded sites listed in the FMSF, historic imagery, and properties of the soils within each transfer area. The results of the reconnaissance survey confirmed the findings of the desktop analysis. The APEs of all the transfer areas are highly modified and disturbed by modern development. During the field reconnaissance, no archaeological sites were identified and no cultural materials were recovered.

2016 JAN -6 P 12:43  
JIM BOXOLD  
SECRETARY



*Cultural Resources Assessment Survey  
Pompano Beach Jurisdictional Transfers  
Broward County*

The results of the desktop analysis and reconnaissance survey determined that there are no previously recorded historic resources or newly identified historic resources, including historic districts, within the APEs. The current project only involves eight jurisdictional transfers with no FDOT-sponsored plans for construction or other improvements. If, after acquisition of the property, Broward County plans to improve the road contained within the jurisdictional transfer, then the County will be responsible for coordinating with the FDHR/SHPO and providing a comprehensive evaluation of any cultural resources and potential effects that such an undertaking would have on any such resources.

Should future construction activities uncover any archaeological remains within the project impact area, it is recommended that activity in the immediate area of the remains be stopped while a professional archaeologist can evaluate the remains. In the event that human remains are found during construction or maintenance activities, the provisions of Chapter 872 of the *Florida Statutes* (872.05) will apply.

The District has determined that no historic properties will be affected by the proposed transfers. I respectfully request your concurrence with this determination.

If there are any questions, please feel free to contact me at (954) 777-4324 or Lynn Kelley at (954) 777-4334.

Sincerely,



Ann Broadwell  
Environmental Administrator  
FDOT - District 4

Enclosures  
cc. file



The Florida State Historic Preservation Officer finds the attached Cultural Resources Assessment Report complete and sufficient and concurs with the recommendations and findings provided in this cover letter for SHPO/DHR Project File Number 2016. 51.

SHPO Comments:




Robert F. Bendus TIM PARSONS, INTERIM  
State Historic Preservation Officer  
Florida Division of Historical Resources

1/13/15

Date