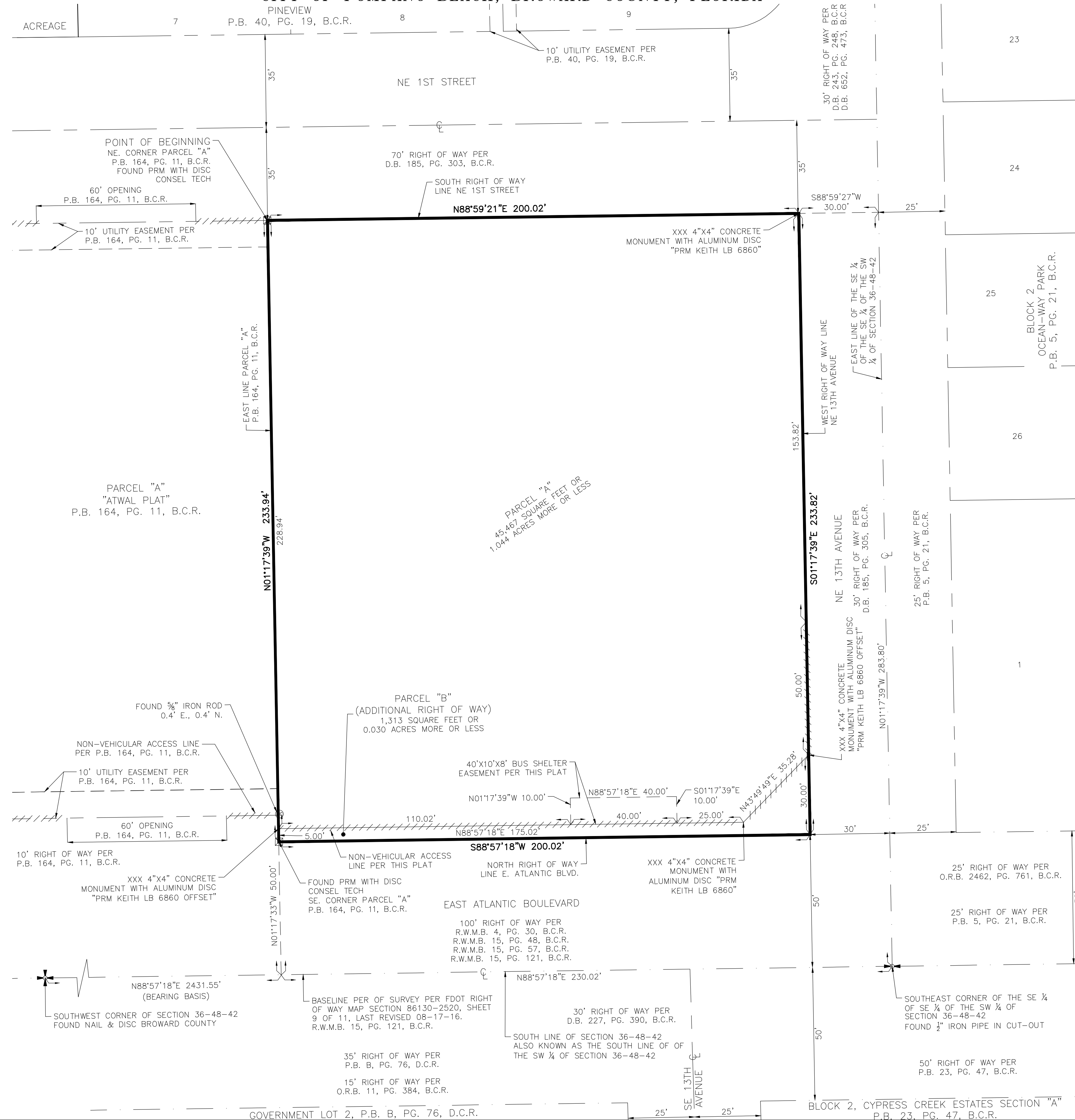


McCLINTON 25

A PORTION OF THE SOUTHWEST ONE-QUARTER (S.W. 1/4) OF SECTION 36, TOWNSHIP 48 SOUTH, RANGE 42 EAST,
CITY OF POMPANO BEACH, BROWARD COUNTY, FLORIDA



NOTICE:
THIS PLAT, AS RECORDED IN ITS GRAPHIC FORM, IS THE OFFICIAL DEPICTION OF THE SUBDIVIDED LANDS DESCRIBED HEREIN AND WILL IN NO CIRCUMSTANCES BE SUPPLANTED IN AUTHORITY BY ANY OTHER GRAPHIC OR DIGITAL FORM OF THE PLAT. THERE MAY BE ADDITIONAL RESTRICTIONS THAT ARE NOT RECORDED ON THIS PLAT THAT MAY BE FOUND IN THE PUBLIC RECORDS OF THIS COUNTY.

PLAT NOTES:
☒ INDICATES SET PERMANENT REFERENCE MONUMENT (P.R.M.) 4"x4"x24" CONCRETE MONUMENT WITH BRASS DISC NO. LB6860 (UNLESS NOTED OTHERWISE).
BEARINGS SHOWN HEREON ARE BASED ON AN ASSUMED MERIDIAN ALONG THE SOUTH LINE OF (S.W. 1/4) SOUTHWEST ONE-QUARTER OF SECTION 36, TOWNSHIP 48 SOUTH, RANGE 42 EAST, BEING NORTH 88°57'18" EAST.

THE FOLLOWING NOTE IS REQUIRED BY CHAPTER 177.091, SUBSECTION (28), FLORIDA STATUTES: PLATTED UTILITY EASEMENTS ARE ALSO EASEMENTS FOR THE CONSTRUCTION, INSTALLATION, MAINTENANCE, AND OPERATION OF CABLE TELEVISION SERVICES; PROVIDED, HOWEVER, NO SUCH CONSTRUCTION, INSTALLATION, MAINTENANCE, AND OPERATION OF CABLE TELEVISION SERVICES SHALL INTERFERE WITH THE FACILITIES AND SERVICES OF AN ELECTRIC, TELEPHONE, GAS, OR OTHER PUBLIC UTILITY. IN THE EVENT A CABLE TELEVISION COMPANY DAMAGES THE FACILITIES OF A PUBLIC UTILITY, IT SHALL BE SOLELY RESPONSIBLE FOR THE DAMAGES. THIS NOTE DOES NOT APPLY TO PRIVATE EASEMENTS GRANTED TO OR OBTAINED BY A PARTICULAR ELECTRIC, TELEPHONE, GAS, OR OTHER PUBLIC UTILITY. SUCH CONSTRUCTION, INSTALLATION, MAINTENANCE, AND OPERATION SHALL COMPLY WITH THE NATIONAL ELECTRIC SAFETY CODE, AS ADOPTED BY THE FLORIDA PUBLIC SERVICE COMMISSION.

ALL FACILITIES FOR THE DISTRIBUTION OF ELECTRICITY, TELEPHONE, AND CABLE SHALL BE INSTALLED UNDERGROUND.
THIS PLAT IS RESTRICTED TO 41 MID-RISE UNITS, 6 TOWNHOUSE UNITS AND 5,200 SQUARE FEET OF COMMERCIAL USE.

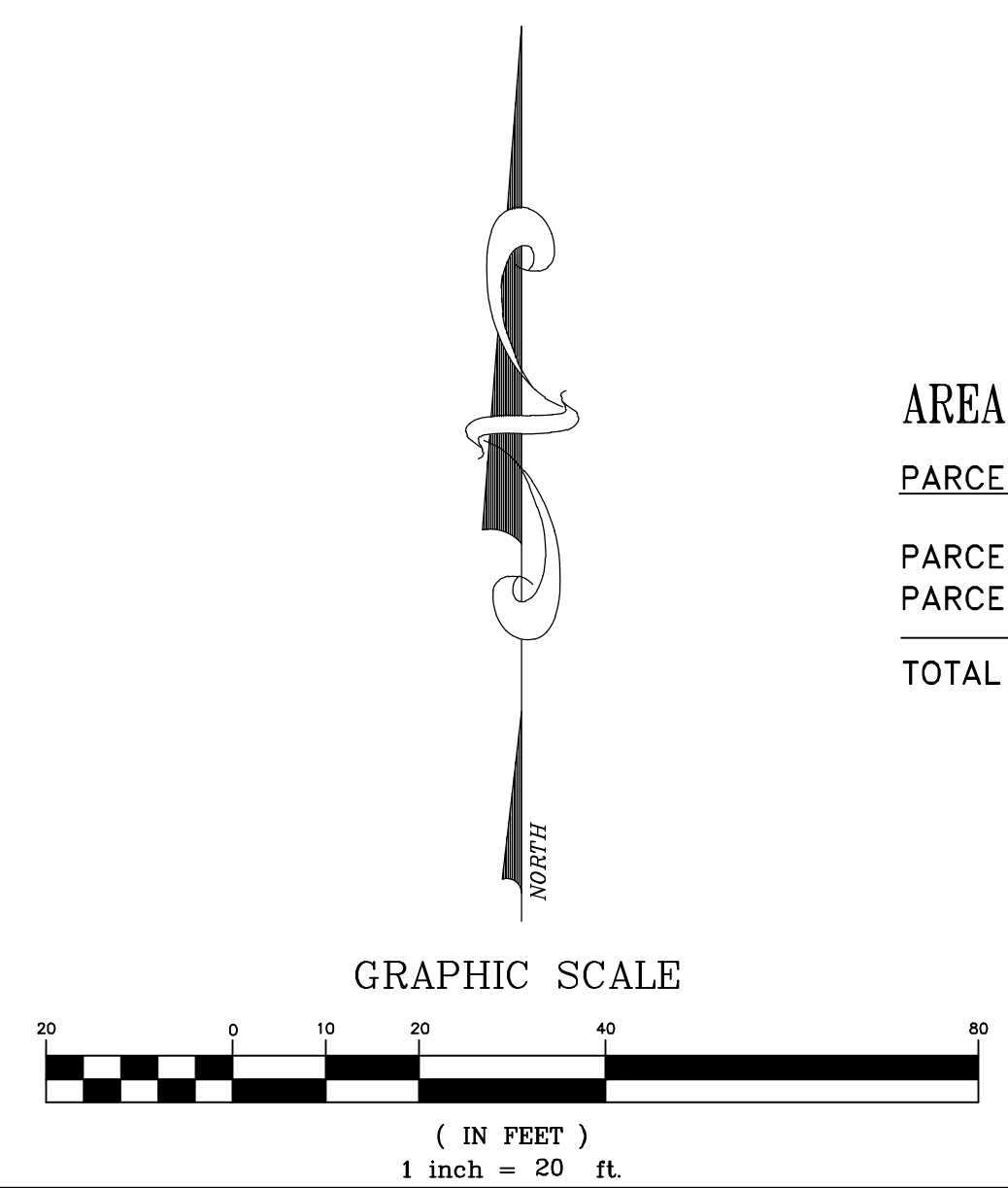
THIS NOTE IS REQUIRED BY CHAPTER 5, ARTICLE IX, BROWARD COUNTY CODE OF ORDINANCES, AND MAY BE AMENDED BY APPROVAL OF THE BROWARD COUNTY BOARD OF COUNTY COMMISSIONERS. THE NOTATION AND ANY AMENDMENTS THERETO ARE SOLELY INDICATING THE APPROVED DEVELOPMENT LEVEL FOR PROPERTY LOCATED WITHIN THE PLAT AND DO NOT OPERATE AS A RESTRICTION IN FAVOR OF ANY PROPERTY OWNER INCLUDING AN OWNER OR OWNERS OF PROPERTY WITHIN THIS PLAT WHO TOOK TITLE TO THE PROPERTY WITH REFERENCE TO THIS PLAT.

ANY STRUCTURE WITHIN THIS PLAT MUST COMPLY WITH SECTION 2B.1.f., DEVELOPMENT REVIEW REQUIREMENTS, OF THE BROWARD COUNTY LAND USE PLAN, REGARDING HAZARDS TO AIR NAVIGATION.

- LEGEND:**
- B.C.R. BROWARD COUNTY RECORDS
 - D.C.R. DADE COUNTY RECORDS
 - D.B. DEED BOOK
 - F.D.O.T. FLORIDA DEPARTMENT OF TRANSPORTATION
 - ID. IDENTIFICATION
 - L.B. FLORIDA DEPARTMENT OF AGRICULTURE AND CONSUMER SERVICES CERTIFICATE OF AUTHORIZATION LICENSED BUSINESS DESIGNATION
 - NVAL NON-VEHICULAR ACCESS LINE
 - O.R.B. OFFICIAL RECORDS BOOK
 - P.B. PLAT BOOK
 - P.G. PAGE
 - PRM PERMANENT REFERENCE MONUMENT
 - R.W.M.B. RIGHT OF WAY MAP BOOK
 - R/W RIGHT OF WAY
 - NON-VEHICULAR ACCESS LINE
 - CENTERLINE
 - ONE-QUARTER SECTION CORNER
 - SECTION CORNER

AREA TABULATION TABLE:

PARCEL NAME	SQUARE FOOTAGE	ACREAGE
PARCEL "A"	45,467	1.044
PARCEL "B"	1,313	0.030
TOTAL	46,780	1.074



PREPARED BY:
KEITH
301 EAST ATLANTIC BOULEVARD
POMPANO BEACH, FLORIDA 33060-6643
(954) 788-3400
EMAIL: mail@KEITHteam.com LB NO. 6860
013-MP-23