

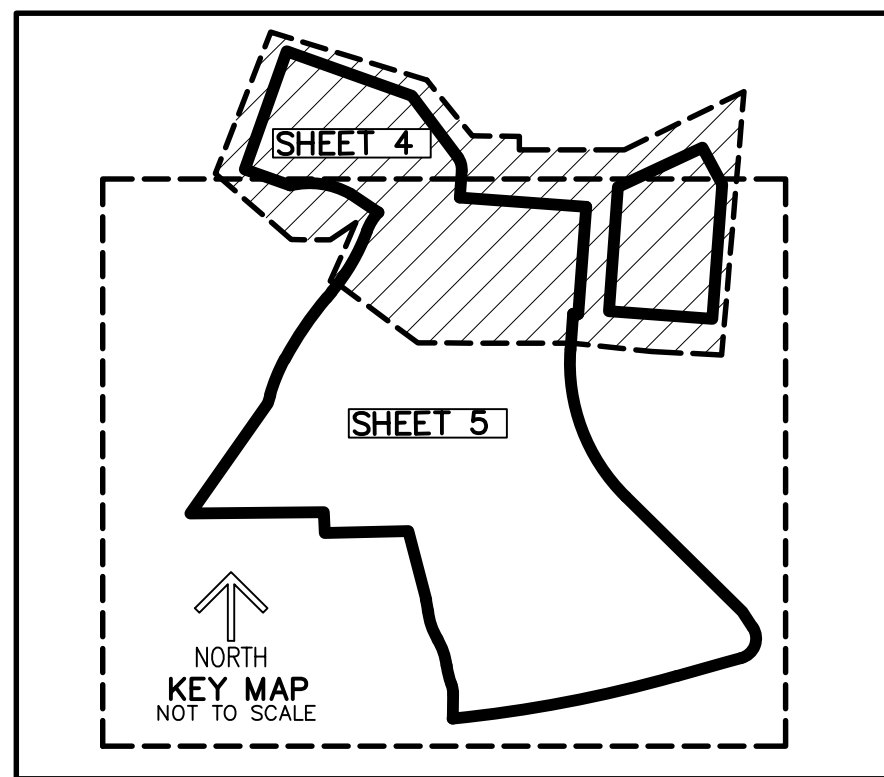
LEGEND

CONC. - CONCRETE
F.P.L.-FLORIDA POWER & LIGHT
FND. - FOUND
I.R./CAP - IRON ROD & CAP
L - ARC LENGTH
O.R.B. - OFFICIAL RECORD BOOK
P.B. - PLAT BOOK
P.O.B. - POINT OF BEGINNING
P.O.C. - POINT OF COMMENCEMENT
P.C.S. - PAGE(S)
P.R.M.-PERMANENT REFERENCE MONUMENT
PROP. - PROPOSED
R - RADIUS
R/W - RIGHT-OF-WAY
RGE. - RANGE
SEC - SECTION
SQ. FT. - SQUARE FEET
TWP. - TOWNSHIP
Δ - DELTA (CENTRAL ANGLE)
-OHE- - ELECTRICAL WIRES OVERHEAD
-FM- - FORCE MAIN
-W- - WATER MAIN
-IRR- - IRRIGATION LINE
-TEL- - PHONE OR FIBER OPTIC LINE
-STM- - STORM LINE
-SS- - SEWER LINE

SYMBOLS:

△ = HORIZONTAL CONTROL POINT
⊕ = BENCHMARK
☒ = TRASH CONTAINER
① = UNIDENTIFIED HANDHOLE
□ = UNIDENTIFIED BOX
△ = NATURAL GAS MARKER
● = SIGN
⊙ = BOLLARD
⊙ = TRAFFIC HANDHOLE
⊙ = CROSSWALK SIGNAL
⊙ = MAST ARM / TRAFFIC LIGHT
⊙ = SET/FOUND BOUNDARY POINT
⊙ = FOUND CONCRETE MONUMENT
⊙ = FIBER OPTIC BOX
⊙ = FIBER OPTIC VAULT
⊙ = TELEPHONE SERVICE MANHOLE
⊙ = CABLE TV HANDHOLE
⊙ = CABLE TV BOX
⊙ = SEWER GATE VALVE
⊙ = SANITARY MANHOLE
⊙ = DRAINAGE MANHOLE
⊙ = YARD DRAIN
⊙ = AREA OF APPARENT PHYSICAL USE BY ADJOINING LANDS

⊕ = CATCH BASIN
⊕ = DRAINAGE PIPE END
⊕ = ELECTRIC SWITCH
⊕ = ELECTRIC HANDHOLE
⊕ = ELECTRIC VAULT
⊕ = ELECTRIC METER
⊕ = ELECTRIC BOX
⊕ = TRANSFORMER
⊕ = GROUND LIGHT
⊕ = LIGHT POLE
⊕ = CONCRETE POWER POLE
⊕ = WOOD POWER POLE
⊕ = GUY WIRE ANCHOR
⊕ = PUMP
⊕ = FIRE HYDRANT
⊕ = WATER GATE VALVE
⊕ = BACKFLOW PREVENTER
⊕ = IRRIGATION RISER/PEDASTAL
⊕ = IRRIGATION CONTROL VALVE
⊕ = WATER METER
⊕ = WELL
⊕ = WATER VALVE
⊕ = SECTION CORNER



*LEGEND ON PAGE 1

| STRUCTURE TABLE | |
|---|--|
| STRUCTURE NAME: | DETAILS: |
| 15151 N:685900.1750' E:925618.8300' | CATCH BASIN RIM: 6.39' B.O.S.: 2.09' N: 2.67' 18" C.M.P. S: 2.63' 18" C.M.P. |
| 15152 N:685871.6390' E:925616.3810' | CATCH BASIN RIM: 7.29' B.O.S.: 2.43' N: 2.59' 18" C.M.P. S: 2.66' 18" C.M.P. |
| 15168 N:686022.1440' E:925752.0290' | CATCH BASIN RIM: 6.17' B.O.S.: 2.54' E: 3.07' 18" C.M.P. W: 3.20' 18" C.M.P. |
| 15165 N:686022.9840' E:925798.3500' | CATCH BASIN RIM: 6.35' B.O.S.: 3.19' N.E.: 3.29 18" C.M.P. W: 3.23' 18" C.M.P. |
| 15172 N:686048.4260' E:925879.3280' | CATCH BASIN RIM: 6.59' B.O.S.: 3.55' W: 3.74' 18" R.C.P. |
| 15113 N:686458.4030' E:925915.5690' | CATCH BASIN RIM: 6.46' INACCESSIBLE |
| 15252 N:686463.3860' E:925868.4940' | CATCH BASIN RIM: 6.39' B.O.S.: 0.35' N: 0.60' 18" R.C.P. SE: 3.70' 24" R.C.P. |
| 15256 N:686534.6280' E:925874.7490' | CATCH BASIN RIM: 6.31' B.O.S.: 4.47' S: 4.63' 18" R.C.P. |
| 15177 N:685877.8320' E:926223.1650' | SANITARY MANHOLE RIM: 8.19' N: -3.17' 8" PVC S: -3.32' 8" PVC |
| 15102 N:686118.0790' E:925978.6990' | SANITARY MANHOLE RIM: 8.41' N: -1.20' 8" PVC S: -1.39' 8" PVC E: 0.10' 8" PVC |
| 15104 N:686138.9170' E:926041.5090' | SANITARY MANHOLE RIM: 8.41' W: 0.39' 8" PVC E: 0.43' 8" PVC |
| 15111 N:686329.0920' E:925884.1270' | SANITARY MANHOLE RIM: 7.71' N: -0.96' 8" PVC S: -1.00' 8" PVC |
| 15247 N:686578.8540' E:925903.4230' | SANITARY MANHOLE RIM: 8.43' N: 0.17' 8" PVC S: 0.14' 8" PVC |
| 15260 N:685734.6720' E:926238.6480' | SANITARY MANHOLE RIM: 8.12' N: -3.82' 8" PVC E: -3.75' 8" PVC W: -3.74' 8" PVC |
| 15161 N:685774.7320' E:926153.9970' | CATCH BASIN RIM: 7.49' B.O.S.: 3.30' S: 3.38' 15" R.C.P. |

CAULFIELD & WHEELER, INC.
CIVIL ENGINEERING - LAND PLANNING
LANDSCAPE ARCHITECTURE - SURVEYING
7900 GLADES ROAD - SUITE 100
BOCA RATON, FLORIDA 33434
PHONE (561) 392-1991 / FAX (561) 750-1452

BOUNDARY SURVEY
FOR OAKS @ PALM AIRE

DATE 3-15-23
DRAWN BY RSE
F.B./ PG. ELEC
SCALE SHOWN

Digitally signed by David Lindsey
Date: 2024.10.15
13:45:54 -0400
Adobe Acrobat
version:
2024.003.20180

JOB # 10326
SHT.NO.
4
OF 5 SHEETS