



8050 NW 77th Ct.
Medley, FL 33166
(305) 249-8434

Response to Request for Letter of Interest

RLI 26-004

**PROFESSIONAL
ENVIRONMENTAL
TESTING SERVICES-
CCNA**

Submitted To:
City of Pompano Beach, Florida
December 22, 2025 2:00pm



TAB 1

TITLE PAGE



PROJECT:

RLI 26-004

Professional Environmental Testing Services -
CCNA

PROPOSER:

UES Professional Solutions, LLC (UES)

8050 NW 77th Court
Medley, FL 33409

Andrew Huertas - Branch Manager
p: 305.249.8434 | e: ahuertas@teamues.com

DATE:

12/22/25

LET'S SOLVE THAT!



TAB 2

TABLE OF CONTENTS

TABLE OF CONTENTS

TAB 1 – TITLE PAGE.....	3
TAB 2 – TABLE OF CONTENTS.....	5
TAB 3 - LETTER OF TRANSMITTAL.....	7
TAB 4 - TECHNICAL APPROACH.....	10
STAFF AVAILABILITY.....	14
COMPLETING PROJECTS ON TIME & ON BUDGET - SOUTH FORK MARINA EXAMPLE.....	16
TAB 5 - REFERENCES.....	18
ADDITIONAL INFORMATION: UES PROJECT REFERENCES.....	20
PRIOR WORK PERFORMED FOR THE CITY OF POMPANO BEACH.....	23
TAB 6 - PROJECT TEAM FORM.....	25
TAB 7 - ORGANIZATIONAL CHART.....	24
MANAGEMENT PLAN.....	28
ORGANIZATIONAL CHART.....	30
TAB 8 - STATEMENT OF SKILLS & EXPERIENCE OF PROJECT TEAM.....	32
TAB 9 - RESUMES OF KEY PERSONNEL.....	37
PRIME RESPONDENT RESUMES.....	37
SUBCONSULTANT RESUMES.....	47
TAB 10 - OFFICE LOCATIONS.....	51
PRIME OFFICE LOCATION.....	51-52
SUBCONSULTANT OFFICE LOCATION.....	53
TAB 11 - CITY FORMS.....	55
PROPOSER INFORMATION PAGE.....	55
EXHIBIT A: LOCAL BUSINESS INFORMATION PAGE.....	56
EXHIBIT B: LOCAL BUSINESS LETTER OF INTENT.....	57
TIER 1/TIER 2 COMPLIANCE FORM.....	58
W-9.....	59



TAB 3

LETTER OF TRANSMITTAL

Date: December 22, 2025

Attention: City of Pompano Beach, Florida
1010 NE 3rd Avenue
Pompano Beach, FL 33060

Reference: RLI 26-004 - Professional Environmental Testing Services - CCNA

Dear Mr. Seifer and Selection Committee Members:

On behalf of UES Professional Solutions, LLC (UES), we are pleased to submit our interest in this continuing contract, supporting the City of Pompano Beach's professional environmental testing needs on an as-needed basis. Supported by our proven track record and past performance with numerous municipalities throughout Florida, including the City of Pompano Beach, we are uniquely qualified to provide the services required under this contract, as evidenced by the enclosed documentation.

Prime Proposer & Authorized Representative

UES Professional Solutions, LLC is responding to this opportunity as a prime proposer, via our Medley, FL branch. UES will deliver these services through a collaborative, solutions-driven approach tailored to Pompano Beach's priorities.

Our Authorized Representative for this RLI will be Andrew Huertas, UES' Branch Manager for our Medley (Miami), FL location. He can be reached at the branch office (8050 NW 77th Court Medley, FL 33166) by phone (305-249-8434) or by email (ahuertas@teamues.com).

Positive Commitment

Our firm has decades of experience supporting statewide municipalities with environmental engineering, assessments, and reporting. We have successfully executed contracts with numerous Florida cities and counties, demonstrating a strong understanding of specific challenges and regulatory requirements occurring within local governments. **Should UES be awarded, we commit to provide the environmental services required by this contract.**

Comprehensive Environmental Capabilities

UES understands that the City of Pompano Beach and its Community Redevelopment Agency (CRA) seek qualified partner firms to provide a wide range of environmental and regulatory support services. These services include preparing preliminary reports and/or alternative recommendations, which may include various types of research, modeling, testing, and field data analysis; preparing all required permit applications and submittal packages for federal, state, county, and city agencies; providing project management services (including turbidity monitoring); preparing recommendations and cost estimates for compliance with regulatory requirements; providing project close-out services such as preliminary and final acceptance, punch list coordination, and required project certifications; preparing reports for regulatory compliance monitoring and assessments; and reporting on endangered animals such as sea turtles and burrowing owls. We also recognize that selected firms may be tasked with additional duties related to regulatory compliance. These core services align closely with UES' comprehensive environmental and regulatory capabilities.. With 60 years of experience, our team has supported similar scopes for municipalities throughout Florida —ensuring public safety, optimizing project performance, and providing actionable data to guide design and construction decisions.

Our team of licensed professionals, engineers, environmental scientists, and technicians is built for responsiveness and technical depth. We are familiar with governmental processes, regulatory requirements, and the need for transparency and accountability. From pre-design exploration to construction-phase testing and long-term monitoring, we will serve as a dependable extension of your staff.

Our mission is to provide the City with cost-effective, efficient, and accurate environmental testing services. Integrity is the keystone of our business relationship with all of our clients.

Not only are our employees committed to fulfilling your needs, but the principal management team is also readily available to be of service, anywhere at any time.

Opportunity Review/Attestation

Our Principals have thoroughly reviewed and understood this RLI, its related documents, and the anticipated scope of work. This Request for Proposal package has been made without collusion with any other person or entity submitting a proposal pursuant to this RLI. UES attests that the information provided in this RLI response is complete, current, and factual.

Our firm has a well-established reputation for providing reliable environmental engineering services and consulting to municipalities across Florida. We've been proud to support a wide range of public-sector projects, consistently delivering high-quality results with a focus on efficiency and compliance. As a seasoned consultant and incumbent environmental contract holder with the City, we view this contract as an exciting opportunity to continue supporting Pompano Beach's infrastructure goals. We welcome the chance to contribute to the City's safe, efficient, and sustainable development. Should the City have questions (or need additional information), please contact the undersigned.

Respectfully submitted,

UES Professional Solutions, LLC



Travis Merrick
President - South Florida
(239) 489-2443
tmerrick@teamues.com



Andrew Huertas
Branch Manager
(305) 249-8434
ahuertas@teamues.com

Please note: Universal Engineering Sciences, LLC has changed its legal entity name to UES Professional Solutions, LLC, doing business as 'UES'. This change does not affect our commitment to delivering high-quality engineering solutions and environmental consulting services with the same expertise and client-focused approach that our clients have grown to know and trust. Please also note that our Federal ID Number (FEIN) has NOT changed; it remains 59-1117804.



TAB 4
TECHNICAL APPROACH

TECHNICAL APPROACH

ENVIRONMENTAL APPROACH AND VISION

UES’ vision for the City of Pompano Beach and the Community Redevelopment Agency (CRA) is to provide proactive, timely, and technically defensible environmental testing and regulatory support that enables the City to meet compliance requirements, advance capital projects, and respond efficiently to ongoing operational needs. UES’s approach prioritizes identifying issues early, maintaining regulatory compliance, and developing cost-effective solutions that minimize project delays and financial impacts.

Our philosophy emphasizes data-driven decision-making. Efforts to “save money” by limiting sampling or analysis often result in insufficient data, regulatory delays, or overly conservative cleanup requirements. Conversely, strategically scoped and defensible investigations allow the City to negotiate appropriate cleanup levels (if required) and optimize long-term costs. Accordingly, UES will tailor each task order to collect the data needed to support project decisions, permitting, and compliance, without unnecessary expenditures.

All UES services will be performed in accordance with:

- Florida Administrative Code (FAC) 62-780 – Contaminated Site Cleanup
- ASTM Standards for Environmental Site Assessments (E1527, E1903)
- FDEP Standard Operating Procedures for Field Activities (DEP-SOP-001/01)
- NELAC requirements for all analytical laboratories
- Applicable Federal, State, County, and City regulations

For each Work Authorization (WA), UES will prepare a detailed schedule using Microsoft Project® or Excel® based on the task complexity. The schedule will be coordinated with City staff, with updates provided through the City’s web-based project management portal, as required by the RLI. UES’ project leadership (including the Principal-in-Charge and Project Manager) will maintain close communication with City and CRA representatives to ensure that the work proceeds efficiently and transparently.

UES team members will remain available and responsive throughout the duration of each WA, including after-hours support when critical or emergency conditions arise.

During field execution, senior professionals will conduct routine site visits to evaluate progress and ensure the work plan is appropriately followed. Should site conditions warrant adjustments to the field approach, UES will immediately notify the City, propose alternatives, and obtain approval before implementing any additional or modified scope.

APPROACH TO SITE EVALUATION

Preliminary environmental evaluations begin with a review of existing data, desktop assessments, and site reconnaissance. UES evaluates potential contaminant sources, environmental conditions, and subsurface characteristics to develop an accurate conceptual site model (CSM). This provides the foundation for the technical approach used in Phase I, II, or III investigations and informs permitting, remediation, and ongoing compliance needs.

By focusing investigative efforts on high-risk areas, using real-time field screening, and applying high-resolution site characterization techniques when beneficial, UES minimizes unnecessary sampling while ensuring regulatory defensibility. Strategic characterization is essential to reducing assessment and remediation costs while enabling the City to advance capital improvements, utility upgrades, stormwater system improvements, parks projects, transportation projects, and other CIP or CRA initiatives included in the RLI.



STEPS OF PRELIMINARY ASSESSMENT

PHASE I SITE RECONNAISSANCE

UES will perform site reconnaissance to:

- Identify potential sources of contamination
- Observe environmental conditions, storage systems, waste areas, drains, or stressed vegetation
- Assess current and former site uses
- Collect information from property owners, tenants, and personnel knowledgeable of site operations

DESKTOP REVIEW

UES will evaluate all available and relevant records, including:

- Regulatory databases (federal, state, county, local)
- Historical aerials and Sanborn maps
- Topographic and geologic maps
- Past environmental reports at the subject and surrounding properties
- Business directories and occupational licenses
- Facility as-builts, utility maps, and sewer video records
- Interviews with current or past operators or owners

This information is combined to form a preliminary conceptual site model and to determine whether Recognized Environmental Conditions (RECs) or other environmental liabilities are present.

APPROACH TO PHASE I ENVIRONMENTAL SITE ASSESSMENT (DUE DILIGENCE)

UES will conduct Phase I ESAs in strict accordance with current ASTM standards. Components include:

RECORDS REVIEW

Evaluation of public records, historical land use, and database search results within ASTM-defined radii.

SITE RECONNAISSANCE

Physical observation of site conditions, structures, tanks, drums, aboveground and underground systems, and indicators of past or current releases.

INTERVIEWS

Interviews with owners, tenants, operators, and others knowledgeable about on-site operations and past conditions.

REPORT PREPARATION

The report will:

- Document findings
- Identify RECs, CRECs, and HRECs
- Provide recommendations and cost estimates for further investigation, if warranted
- Include maps showing surrounding environmental concerns

APPROACH TO PHASE II/III ENVIRONMENTAL SITE ASSESSMENTS

Upon authorization, UES will develop a project-specific sampling and analysis plan tailored to the site's conditions and regulatory needs. Sampling may include:

- Grab and composite soil samples
- Hand auger samples
- Direct-push (Geoprobe/CPT) sampling
- Hollow-stem auger soil borings
- Groundwater sampling (one-time event or through well installation)
- Soil gas or vapor sampling
- Backhoe test pits

Sampling methodology is selected based on:

- Type and source of contamination
- Affected media (soil, groundwater, vapor)
- Depth to groundwater
- Soil and geologic conditions
- Required cleanup target levels

All samples are collected using FDEP Standard Operating Procedures (SOPs), maintained under chain-of-custody, and analyzed by NELAC-certified laboratories.

Contaminant concentrations are compared to FAC 62-777 cleanup target levels or site-specific criteria when applicable. If exceedances occur, UES will evaluate the potential for risk-based closure using exposure pathways and receptor assessments.

A comprehensive report summarizing methods, findings, results, recommendations, tables, figures, and appendices will be prepared and reviewed by a licensed Professional Geologist or Professional Engineer.

APPROACH TO CONTAMINATION ASSESSMENT, REMEDIAL DESIGN, AND REGULATORY SUPPORT

UES provides full contamination assessment and remediation planning services, including:

- Development of Contamination Assessment Reports (CAR)
- Preparation of Remedial Action Plans (RAP)
- Modeling, feasibility evaluations, and alternative recommendations
- Design of soil and groundwater remedial systems
- Preparation of regulatory reports, monitoring summaries, and compliance submittals
- Funding and reimbursement consultation when applicable

UES recognizes the RLI includes support services for remediation; we maintain extensive experience coordinating with FDEP, Broward County, and other agencies to secure approvals, negotiate cleanup objectives, and support municipal operations.

SUPPORT FOR ADDITIONAL SCOPE ITEMS

UES will fulfill all requirements in the City's and CRA's Scope of Services, including:

REGULATORY PERMITTING

UES will:

- Prepare all required permit applications
- Develop complete submittal packages for Federal, State, County, and City agencies
- Provide supplemental technical data, modeling, and environmental documentation

- Respond to Requests for Information (RFIs) from agencies

REPORTING FOR REGULATORY COMPLIANCE

UES' services will include:

- Monitoring reports
- Environmental assessments
- Turbidity monitoring for marine, dredging, and construction projects
- Endangered species observation reports (burrowing owls, sea turtles, and other species)
- Stormwater/utility repair documentation
- Environmental monitoring during demolition

PROJECT MANAGEMENT AND COORDINATION

Under this contract, UES will provide:

- Project planning and schedule control
- Cost estimating for compliance and permitting requirements
- Daily coordination with City staff
- Emergency response sampling and investigation

PROJECT CLOSEOUT

UES will support:

- Final inspections
- Punch list verification
- Regulatory certifications
- Final acceptance documentation

USE OF THE CITY'S WEB-BASED PROJECT MANAGEMENT SYSTEM

UES will comply fully with the City's requirement to:

- Use the City-provided project management platform
- Log in daily and maintain updated documentation
- Upload reports, submittals, logs, RFIs, permits, and supporting files
- Coordinate with the City, contractors, and subconsultants through the system

MAINTAINING TIME SCHEDULES AND COST CONTROLS

SCHEDULING AND SCHEDULE CONTROL

Once the City accepts the scope and staffing proposal, we will immediately set in motion the required tasks to complete the project.

A call or email from Authorized Representative Andy Huertas to our project managers will begin the service request.

The project managers - and any additional department staff as appropriate - will meet with the City's representatives to define the project scope, project timeline and obtain necessary maps, project details, and other pertinent information to complete the required assignment. Environmental services are performed on a project-by-project basis, as the requirements for these services can be fairly intricate and vary in scope.

Our environmental staff are available for projects seven days a week, 24 hours a day. Our laboratory can also be open seven days a week, allowing for a faster turnaround time, as necessary.

For an as-needed, CCNA-based contract, UES understands daily scheduling coordination is imperative.

We will maintain critical project communication (primarily through our assigned project managers) with the City's field representative to ensure timely sampling and testing on the project site. As scheduled by the City, we will complete the required scope of services and reporting for each project. We recognize all required deliverables and documentation, including daily field reports, must be submitted to the City within the required timeline. These reports will be used for the final signed and sealed reports and will provide accurate information on the type, location, and time spent on the tests. The reports signed by our team's technician will be available for review by the City's field representative. Our Senior Project Managers will monitor these activities with the entire team and ensure that coordination and communication maintain throughout the project's life. Each task has a specific deliverable completed within our standard turnaround times. Our clerical staff will ensure that the Table of Deliverables is completed and submitted.

SCHEDULE DEVELOPMENT METHODOLOGY

The project manager first conducts a project kick-off meeting with all parties involved in the project. During this meeting, we develop a detailed schedule (including identifying the critical path) for the UES project team, sub-consultants, and the client. A key objective of this meeting is to understand the client's (in the case, the city's) Objectives and Desired Outcomes (CODO) so that we can propose a schedule tailored to your needs. We consider project aspects such as field conditions, the scope of services, project logistics, site access, subcontractor availability, laboratory turnaround times, and regulatory deadlines. Once we consider all relevant resources and needs, we will present the City with a written schedule for review.

UES develops realistic schedules and achieves rapid turnarounds for our clients. We leverage years of experience to manage scheduling details. Our expertise affords clients valuable time to focus on critical decisions related to budgets, end goals, follow-up actions, and public image.

When a project begins, the project manager first conducts a kick-off meeting with all parties involved to review the project schedule and logistics, site access, subcontractor availability, laboratory turnaround times, and regulatory deadlines. Once we consider all relevant resources and needs, we update the project schedule as necessary.

UES develops practical schedules (using Microsoft Project) such as a project network with critical path layouts and milestone planning. We make real-time comparisons against the planned project schedule during the project's performance to monitor progress and quickly address any potential issues if variances arise.

CURRENT AND PROJECTED WORKLOAD

Prior to presenting this qualification statement, our Principals reviewed this contract’s anticipated scope of work to determine proper allocation of our resources (should we become the successful consultant).

UES’ breadth of staff and resources provide maximum flexibility to meet our clients’ scheduling needs.

As a geotechnical, materials testing, and environmental consulting engineering firm, the nature of our work often requires us to provide expedited services. Our typical backlog includes many short-duration assignments; thus, our workload can vary on a weekly basis.

Furthermore, long-term contracts are often built as indefinite quantity, making the workload dependent upon individual work orders - this can sometimes result in unpredictable workloads.

UES’ Miami branch strategically manages our workload capacity to enable quick, yet thorough responses to emergency situations and fast-tracked projects.

Based on prior experience, we believe that our present and future workload capacity is more than adequate to conduct the required services for this contract promptly and efficiently.

COMMITMENT TO AVAILABILITY

The project team presented in this proposal, including our field personnel, are committed to being available to serve the City whenever called upon, and we will highly prioritize this contract. Our team will function as an extension of the organization. We will safely complete every assignment with outstanding performance while maintaining our budget and high-quality standards to earn your trust.

UES will treat the City of Pompano Beach as a most-favored customer, prioritizing ourselves managerially and fiscally for your staff and this project.

Due to the nature of our environmental engineering services, many of our projects vary in duration, typically ranging from two to four weeks. We have allocated additional field personnel and office support staff to ensure all of our assignments

are completed promptly. We pride ourselves in completing assignments safely, within budget, and on time with the appropriate resources.

We can immediately staff projects full-time and have personnel available for “will call” or intermittent assignments. UES further asserts that personnel assigned to this project will come from existing resources and that only experienced and well-qualified personnel will be assigned to perform our services.

The assigned staff will be available to begin the specified projects and continue the work on an as-needed basis.

The dedication of the personnel necessary to staff and complete the various tasks on this project will not overload our current technical and management staff capacity. We have included personnel availability herein.

PERSONNEL	% AVAILABILITY
Andy Huertas <i>Branch Manager/ Authorized Representative</i>	60%
Jonathan Bulley, PMP <i>Project Manager</i>	60%
Jeniffer Clark <i>Assistant Project Manager</i>	70%
Nathan (Nate) Ayyar <i>Business Operations Manager</i>	50%
Jodie Arscott <i>Environmental Department Manager</i>	65%
Rachel Dobrilovic <i>Environmental Specialist/Scientist</i>	65%
John Jones <i>Ecological Services Manager</i>	50%

COST SAVING APPROACH

As a seasoned engineering consulting firm, UES is well aware that construction projects face many challenges: budget constraints, safety issues, environmental impact, etc. By applying value methodology (also called value engineering, value analysis or value management) to construction projects, UES is able to save our clients significant amounts of money and time. These concepts benefit clients and taxpayers by:

- Reducing project costs
- Reducing paperwork
- Simplifying procedures
- Improving project schedules
- Reducing waste
- Increasing efficiency
- Using resources more effectively
- Developing innovative solutions

COST CONTROL

It is UES' obligation to be cost conscious in our attempts to ensure that our clients' needs - including those of Pompano Beach - are met. We are responsive to the needs of our clients without compromising the integrity of the work and have developed an effective policy in partnering with our clients throughout our contracts.

Once awarded a project, UES' principal management team will meet with City representatives to identify cost estimates for the full scope of a project. At this time, we will make recommendations to manage costs before the actual work has begun, and once cost issues have been resolved, only then will UES commence work.

Our mission is to maintain clear, proactive communication with our clients before and throughout the work to achieve mutually agreed-upon outcomes. UES is committed to providing the City of Pompano Beach with confidence that cost management is a critical priority.

UES retains full management control over scheduling and quality. Should any concern arise, we encourage the City's representative to contact our Senior Management or Principals for prompt resolution. Since the company's inception, UES has maintained an open-door policy with clients and employees, fostering effective communication and consistently positive outcomes.

VALUE METHODOLOGY APPLICABILITY

UES applies value methodology wherever cost and/or performance improvement is desired. That improvement can be measured in terms of monetary aspects and/or other critical factors such as productivity, quality, time, energy, environmental impact and durability. It can beneficially be applied to virtually all areas of construction, including professional environmental engineering services contemplated in this opportunity.

COMPLETING PROJECTS ON TIME & ON BUDGET: SOUTH FORK MARINA



This project involved environmental assessments and services for the redevelopment of the South Fork Marina. UES completed a Phase II Environmental Site Assessment in October 2015, a Sediment Assessment in July 2018, a Limited Soil Assessment in September 2018, and a Limited Soil, Sediment, and Groundwater Assessment in May 2019. UES performed these tests to assess the presence of petroleum hydrocarbons and metal impacts onsite. In July 2019 UES prepared a Soil Management Plan (SMP) to facilitate properly handling sediments dredged from the South Fork River and soils excavated from eastern and western upland areas impacted by petroleum hydrocarbons, copper, and arsenic, for the construction of boat slips during redevelopment. UES provided oversight and reporting for the implementation of the approved SMP.

Additionally, a 500-gallon single-walled steel underground storage tank (UST), previously abandoned in place and filled with concrete, was removed. UES was retained to remove the UST and submit a Tank Closure Assessment Report (TCAR) for review and approval by the Broward County Environmental Protection and Growth Management Department (BCEPGMP). The UST appeared to have surface corrosion with no obvious holes or integrity issues and was observed to be in fair condition. The UST was transported off-site in a roll-off dumpster for disposal at the Waste Management Monarch Hill Landfill. UES then performed confirmation soil and groundwater sampling. Groundwater was not encountered during UST removal activities, and the excavation was subsequently backfilled with the native material. The TCAR was submitted to the BCEPGMP and was approved.

UES Project Managers coordinated with the Hix Snedeker Companies project team before (and during) development of the scope of work, cost, and schedule for the various environmental services on this project. Prior to the inception of each service, UES interacted with the Hix Snedeker Companies project team to determine the project's needs on an item-by-item basis and provided cost estimates for the project scope. Before beginning work, UES shared recommendations to manage costs for the client's consideration and implementation. Once approved, work assignments were then delegated to UES' appropriate senior and staff professionals for execution. Project milestone dates were established, and the quality assurance project plan was implemented. UES experienced project management team, including Project Manager Jonathan Bulley coordinated and communicated regularly with the client's project team, applicable regulatory agencies and other stakeholders throughout the various aspects of the project to ensure continuous alignment with the project objectives, addressing issues timely and completed and submitted deliverables within agreed upon timeframes. **As such, UES was able to successfully complete the various environmental services safely, within budget for each service, and within the agreed-upon schedules.**



TAB 5
REFERENCES

Bidder Company Name UES Professional Solutions, LLC**Qualifications Of Bidders**

To demonstrate qualifications to perform the work, and to be considered for award, each bidder shall submit at least three (3) business customer references. Provide information for business customers for whom you have performed work of this nature which you list as references, excluding the City of Pompano Beach. (Use an attachment if necessary.)

1. Name and address of customer: City of Coral Gables, Florida
2800 SW 72nd Avenue Miami, FL 33155
Contact person name, telephone number and email address: Jean Solari, MBA - Project Manager
Phone: 305-460-5102 | Email: jsolari@coralgables.com
Description of services provided and date(s) of service: Since April 2023, UES has provided environmental consulting for the city's Former Incinerator site, including assessment planning, soil characterization, and regulatory submittals. Work completed to date remains on schedule and within budget.

2. Name and address of customer: Boca Raton Resort & Club
501 East Camino Real Boca Raton, FL
Contact person name, telephone number and email address: Ms. Robyn Neely
Phone: 407-419-8549 | Email: robyn.neely@akerman.com
Description of services provided and date(s) of service: Since April 1999, UES has provided site assessment, remediation, natural attenuation monitoring, and reporting. Please see additional pages for further information.

3. Name and address of customer: El Ad National Properties, Inc.
150 E. Palmetto Park Road Suite 400 Boca Raton, FL 33432
Contact person name, telephone number and email address: Mr. Matthew Jeffries
Office Phone: 954-846-7800 | Direct: 954-846-7806 | Email: mjeffries@eladnational.com
Description of services provided and date(s) of service: This is an ongoing project. Since 2018 UES has provided site assessment, groundwater sampling, and soil management. Please see additional pages for further information and project details.

Bidder Company Name UES Professional Solutions, LLC**Qualifications Of Bidders**

To demonstrate qualifications to perform the work, and to be considered for award, each bidder shall submit at least three (3) business customer references. Provide information for business customers for whom you have performed work of this nature which you list as references, excluding the City of Pompano Beach. (Use an attachment if necessary.)

1. Name and address of customer: Butters Construction & Development
6820 Lyons Technology Cir. Suite 100 Coconut Creek, FL 33073
Contact person name, telephone number and email address: Mr. Malcolm Butters - President
Phone: 954-312-2403 | Email: MNButters@Butters.com
Description of services provided and date(s) of service: For this ongoing project, UES has
provided various services (monitoring well installations, abandonments, and annual
groundwater quality monitoring for the Gold Coast Plat - Borrow Pit Reclamation site at
1601 NW 15th Avenue in Pompano Beach. Please see additional page for further details.

2. Name and address of customer: _____

Contact person name, telephone number and email address: _____

Description of services provided and date(s) of service: _____

3. Name and address of customer: _____

Contact person name, telephone number and email address: _____

Description of services provided and date(s) of service: _____

ADDITIONAL INFORMATION: UES PROJECT REFERENCES

Boca Raton Resort & Club

Boca Raton, FL



The Boca Resort facility combines hotel and residential space, recreational facilities, a marina, conference center and support buildings and operations. During the foundation construction of a new marina wing, dry cleaning solvent contamination associated with the laundry building facility was discovered. UES' environmental professionals completed the groundwater assessment including the installation of monitoring wells in sensitive and difficult to access locations without disturbing facility operations. UES conducted active remediation including the including the injection of a bioremediation agent to enhance degradation of chlorinated solvent contaminants. UES continues to conduct quarterly groundwater sampling at the Boca Resort as part of an approved Monitoring Only Plan (MOP). We are currently exploring closure options for the site.

Contract Amount:

- **\$200,000+**

El Ad National Properties - The Mizner on the Green/Alina

Boca Raton, FL



The site is approximately 8.77+/- acre commercial tract and was developed with a 22-year-old apartment complex comprised of 18 apartment buildings and one clubhouse/leasing office building. Before the construction of the apartment complex, the subject property was used as a golf course. The site has been redeveloped into multi-story condominium buildings.

UES' Phase II ESA report dated September 18, 2018 identified the presence of arsenic in site soil and groundwater in concentrations greater than the applicable FDEP Soil and Groundwater CTLs. Additional soil sampling was completed as part of site assessment activities performed from June 2019 to January 2021. In addition to arsenic, chromium and dieldrin impacts were identified in site soil during additional soil assessment activities. The soil impacts appear throughout the site and at varying depths. Exposure to impacted soils has been addressed by soil management practices during construction activities and by the construction of engineering controls consisting of a combination of 1-foot cap of clean soil with an underlying geo-textile membrane, two feet of clean soil and impervious building foundations and asphalt paving. Additional groundwater sampling was completed as part of site assessment activities in June 2019 and monitoring activities that began in March 2020. Based on the sampling data, groundwater impacts are present along the northern property boundary, south-centrally, and southeastern property boundary. On behalf of the client UES proposed Site Closure per Risk Management Option Level II using an Institutional Control (i.e., a Declaration of Restrictive Covenant) prohibiting groundwater use at the subject property. Risk Management Option Level II utilizes Institutional and Engineering Controls to protect human health, public safety, and the environment. The proposed Site Closure with Engineering and Institutional Controls was approved by the FDEP.

This project is ongoing with estimated completion in 2026.

Contract Amount:

- **\$400,000+**

Butters Construction & Development - Gold Coast Plat Reclamation

Pompano Beach, FL



UES completed Monitoring Well Installations, Abandonments, and Annual Groundwater Quality Monitoring for the Gold Coast Plat – Borrow Pit Reclamation site located at 1601 NW 15th Avenue in Pompano Beach, FL. The services were performed to comply with the Broward County Solid Waste Management License approved for the site. UES submits Annual Groundwater Quality Monitoring reports to Broward County during the first quarter of each year. This project is ongoing.

Contract Amount:

- **\$54,000+**

Image courtesy of Google Maps



PRIOR WORK PERFORMED FOR THE CITY OF POMPANO BEACH

UES was engaged by the City of Pompano Beach for the following efforts.

PROJECT	SCOPE	COMPLETION DATE
McNair Park Improvements	Structural, special, and threshold inspections	2021
Wet Well - 2000 NW 5th Terrace	Geotechnical - foundation and engineering studies	2023
Emergency Road Repair - Powerline Road & Atlantic Blvd., Powerline Road and south of Atlantic Blvd.	Quality control services	2024



TAB 6

PROJECT TEAM FORM

COMPLETE THE PROJECT TEAM FORM ON THE ATTACHMENTS TAB IN THE EBID SYSTEM. PROPOSERS ARE TO COMPLETE FORM IN ITS ENTIRETY AND INCLUDE THE FORM IN YOUR PROPOSAL THAT MUST BE UPLOADED TO THE RESPONSE ATTACHMENTS TAB FOR THE RLI IN THE EBID SYSTEM.

PROJECT TEAM

RLI NUMBER 26-004

Federal I.D.# _____

PRIME

Role	Name of Individual Assigned to Project	Number of Years Experience	Education, Degrees
Principal-In-Charge	<u>Fred Kaub, PG</u>	<u>See attached</u>	<u>See attached</u>
Project Manager	<u>Jonathan Bulley, MS, PMP, CSP, CHMM, LAC</u>	<u>See attached</u>	<u>See attached</u>
Asst. Project Manager	<u>Jeniffer Clark</u>	<u>See attached</u>	<u>See attached</u>
Other Key Member	<u>Andrew Huertas - Branch Mgr.</u>	<u>See attached</u>	<u>See attached</u>
Other Key Member	<u>Nathan Ayyar</u>	<u>See attached</u>	<u>See attached</u>
	<u>Rachel Dobrilovic</u>	<u>See attached</u>	<u>See attached</u>
	<u>John Jones</u>	<u>See attached</u>	<u>See attached</u>

SUB-CONSULTANT

Role	Company Name and Address of Office Handling This Project	Name of Individual Assigned to the Project
Surveying	_____	_____
	_____	_____
Landscaping	_____	_____
	_____	_____
Engineering	<u>KEITH</u>	<u>Omar Rodriguez, PE, CM, ENV SP</u>
	<u>301 E Atlantic Blvd, Pompano Beach, FL 33060</u>	<u>Niles Warrick, PE, CFM, ENV SP</u>
Other Key Member	_____	<u>Cavel Williamson, PE</u>
	_____	_____
Other Key Member	_____	_____
	_____	_____
Other Key Member	_____	_____
	_____	_____
Other Key Member	_____	_____
	_____	_____

(use attachments if necessary)

PROJECT TEAM (UES) - YEARS OF EXPERIENCE & EDUCATION

UES TEAM MEMBER	YEARS OF EXPERIENCE	EDUCATION
Fred Kaub, PG	35+	BS, Geology, Indiana University
Jonathan Bulley, MS, PMP, CSP, CHMM, LAC	20	MS, Environmental Engineering, Florida International University BS, Agricultural Science, Kwame Nkrumah University of Science and Technology
Jeniffer Clark	7	BS, Business Management, University of Phoenix
Andrew Huertas	25	BA, Loyola University, New Orleans
Nathan Ayyar	9	BS, Psychology, University of Florida
Rachel Dobrilovic	7	BS, Environmental Sciences
John Jones	20+	BS, Chemistry, University of Tennessee at Chattanooga

PROJECT TEAM (KEITH) - YEARS OF EXPERIENCE & EDUCATION

UES TEAM MEMBER	YEARS OF EXPERIENCE	EDUCATION
Omar Rodriguez, PE, CFM, ENV SP	7	MS, Hydroinformatics and Water Management, Université Côte d'Azur MS, Hydroinformatics and Water Management, Brandenburg University of Technology Cottbus-Senftenberg MS, Hydroinformatics and Water Management, Warsaw University of Technology MS, Hydroinformatics and Water Management, Technical University of Catalonia MS, Hydroinformatics and Water Management, Newcastle University BS, Civil Engineering, Escuela Superior Politecnica Del Litoral
Niles Warrick, PE, CFM, ENV SP	8	BS, Civil Engineering, University of Central Florida
Cavel Williamson, PE	7	BS, Chemical & Process Engineering, University of the West Indies



TAB 7
ORGANIZATIONAL CHART

A. MANAGEMENT PLAN & ORGANIZATIONAL STRUCTURE

The UES organizational structure for this five-year Continuing Contract for Professional Environmental Testing Services is designed to provide the City of Pompano Beach and the CRA with a cohesive, accountable, and technically diverse team. Our management plan ensures consistent coordination, schedule adherence, regulatory compliance, and high-quality deliverables across the full range of environmental, civil, and permitting services outlined in RLI26-004.

UES will provide centralized oversight supported by discipline-specific experts, NELAC-certified laboratory capabilities, and a robust field operations team. To expand the depth of services for stormwater and drainage engineering, UES has partnered with KEITH, a highly qualified civil engineering subconsultant with extensive experience in municipal infrastructure projects throughout South Florida.

PROGRAM OVERSIGHT

UES' dedicated Project Manager - Jonathan Bulley - serves as the primary point of contact for the City. He will oversee all contract activities, manage staffing and resources, ensure compliance with CCNA requirements, and provide high-level quality control for all deliverables. Assistant Project Manager Jeniffer Clark will provide daily operational support, assist in coordinating Work Authorizations, and ensure timely completion of assigned tasks.

TECHNICAL LEADERSHIP

Project Manager Jonathan Bulley will provide technical guidance on environmental assessments, sampling programs, endangered species documentation, turbidity monitoring, and regulatory liaison activities. This role ensures that all reporting meets the standards of federal, state, county, and City agencies.

Principal in Charge Fred Kaub, PG, will also be available to assist, should support be needed.

CIVIL ENGINEERING SUPPORT - KEITH

To support stormwater and drainage improvement projects identified in the RLI—including stormwater/drainage infrastructure improvements, water and sewer projects, roadway projects, and emergency repair support—UES will integrate KEITH into the project team. KEITH's civil engineers will:

- Provide technical evaluation and civil design support for stormwater and drainage components;
- Assist in developing alternative recommendations and preliminary engineering assessments;
- Support regulatory permitting related to stormwater and site/civil improvements;
- Contribute to project close-out documentation and engineering certifications, as needed;
- Coordinate with UES environmental staff to ensure seamless integration of civil and environmental scopes.

KEITH's team includes:

- Omar Rodriguez, PE, CFM, ENV SP
- Niles Warrick, PE, CFM, ENV SP
- Cavel Williamson, PE

FIELD AND LABORATORY OPERATIONS

UES Environmental Scientists and Field Technicians perform field sampling, turbidity monitoring, site inspections, and emergency mobilizations following FDEP Standard Operating Procedures. All laboratory analyses are conducted under our NELAC-certified Laboratory Manager, who oversees QA/QC, chain-of-custody integrity, and compliance with the Laboratory Quality Manual.



SPECIALIZED SUPPORT SERVICES

The team includes a Permitting & Compliance Coordinator who prepares complete permitting packages for all relevant agencies, and a Health & Safety Coordinator who manages OSHA-compliant safety programs and site-specific HASPs. Wildlife biologists, geologists, and other specialists will be engaged as necessary for endangered species reporting, dredging support, and marine/coastal assessments.

INTEGRATION WITH THE CITY’S PROJECT MANAGEMENT PLATFORM

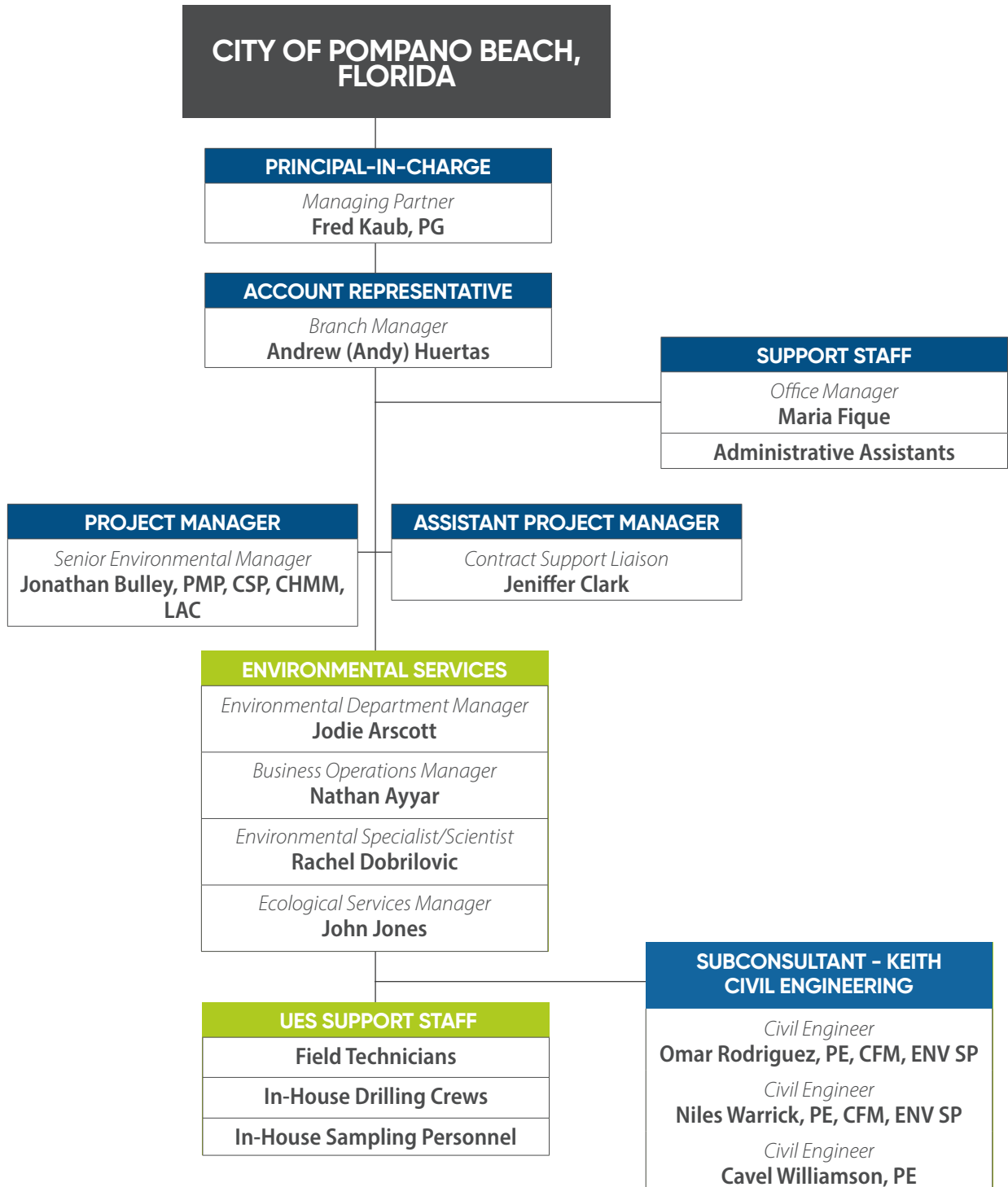
All UES and KEITH personnel will fully utilize the City’s web-based project management platform to manage project controls, upload deliverables, track review comments, log daily activity, and maintain transparent communication with the City.

The Program Manager and Deputy Program Manager oversee compliance with all system requirements and ensure all project information remains accurate and current.

This integrated organizational structure—anchored by UES and strengthened by KEITH’s civil engineering expertise—provides the City with a responsive, well-resourced, and fully compliant team capable of supporting routine, specialized, and emergency environmental and infrastructure service needs under the Continuing Contract.

B. ORGANIZATIONAL CHART

This chart illustrates our proposed organization for this contract. Our in-depth experience (and ability to adjust staff and resources to respond to a project’s needs) results in a fiscally-lean, efficient effort. We are committed to providing ample resources (backed by the entire firm) to ensure timely, efficient responses to any City task.





TAB 8

STATEMENT OF SKILLS & EXPERIENCE
OF PROJECT TEAM

EXPERIENCE OF PROJECT TEAM- UES PROFESSIONAL SOLUTIONS (PRIME CONSULTANT)

FRED KAUB, PG, LAC - MANAGING PARTNER/ PRINCIPAL-IN-CHARGE

Mr. Kaub is a licensed Florida Professional Geologist and co-founder of GFA International, now part of UES Professional Solutions, LLC. He holds a BS in Geology from Indiana University and has over 35 years of experience in geotechnical engineering. He serves as Executive Liaison, overseeing geotechnical services including soil exploration, materials testing, and foundation analysis. Mr. Kaub has led investigations for major infrastructure projects such as dams, levees, canals, and stormwater treatment areas. He has served as an Expert Professional for the South Florida Water Management District and is active in numerous professional associations.

ANDREW (ANDY) HUERTAS - BRANCH MANAGER/AUTHORIZED REPRESENTATIVE

Andy has over 25 years of experience in construction, specializing in safety consulting, competent person training, engineering support, rental equipment operations, and contract management. He has led safety programs aligned with OSHA standards and provided field-based training to enhance jobsite compliance and performance. Andy's broad expertise supports efficient project execution, risk mitigation, and operational oversight across a variety of construction environments.

JONATHAN BULLEY, MS, PMP, CSP, CHMM, LAC - PROJECT MANAGER

Mr. Bulley is a certified Project Management Professional (PMP), Certified Safety Professional (CSP) and Licensed Asbestos Consultant (LAC) with over 20 years of experience. His extensive experience encompasses complex environmental projects ranging from local, privately owned sites to international sites owned by large corporations, such as Chevron.

He specializes in Phase I and Phase II Environmental Site Assessments, storage tank closures, contamination assessment and reporting, site remediation and closure, natural attenuation monitoring, and field sampling procedures, as well as asbestos surveys and asbestos consulting.

As UES' Senior Environmental Manager, Mr. Bulley supports all environmental projects. He holds a Master of Science degree in Environmental Engineering and Bachelor of Science degree in Agricultural Science. He will be responsible for the following:

- Coordinating entire project(s) within the environmental engineering discipline
- Resolving all conflicts
- Ensuring Quality Assurance/Quality Control (QA/QC) for environmental engineering services
- Authority to authorize work and negotiate changes with the City's Contracting Officer (or Representative)

NATHAN (NATE) AYYAR - BUSINESS MANAGER

With nine years of experience, including extensive construction industry knowledge, Nate Ayyar serves as the Business Manager for UES' Medley, Florida branch. In this capacity he oversees day-to-day operations, project coordination, and client service delivery. With one year of experience at UES, Nate has quickly established himself as a dependable leader known for his strong organizational skills, collaborative approach, and commitment to operational excellence.

In his role, Nate ensures that field services, laboratory activities, and administrative workflows run efficiently and in alignment with UES standards. He supports project teams in meeting schedules, maintaining quality, and delivering responsive service to clients across South Florida. Nate is also instrumental in fostering a positive work environment and strengthening communication between staff, management, and clients.

Driven, detail-oriented, and focused on continuous improvement, Nate contributes to the Medley branch's growth by implementing effective processes and supporting the success of both his team and the projects they serve.

Prior to his UES employment, Nate served as Managing Director of Green Tag, a construction safety company specializing in OSHA compliance.

He also was an owner of AGF Access South Florida, an access specialty company with a focus on scaffolding, swing stages, and mast climber installation and operation. After the sale of AGF Access South Florida to BrandSafway, Mr. Ayyar transitioned to his current role as Business Manager for UES' Miami (Medley) Branch.

JODIE ARSCOTT - ENVIRONMENTAL DEPARTMENT MANAGER

Ms. Arscott serves UES Miami as Environmental Department Manager, with six years of environmental industry experience, including project management and field expertise. Her repertoire includes projects involving Site Investigations, Contamination Assessments, Phase I and II Environmental Site Assessments, Source Removal, Remediation, and Threatened and Endangered Species Surveys. Her experience also encompasses field activities, report generation, proposal preparation, cost estimates, supervising drilling operations, soil management plans, and health and safety plans.

RACHEL DOBRILOVIC - ENVIRONMENTAL SPECIALIST/SCIENTIST

With nine years of industry experience, Rachel serves UES' Miami branch office as an Environmental Staff Scientist. She offers a wealth of environmental knowledge to UES' South Florida locations.

JOHN JONES - ECOLOGICAL SERVICES MANAGER

With more than 20 years of experience, John Jones serves as Ecological Services Manager for UES' South Florida locations. He specializes in project management, environmental compliance, and sustainability initiatives, with a proven background in permitting and licensing for utility facilities, wetlands identification and permitting, biological assessments, and regulatory risk management. His career includes leadership roles at NextEra Energy and consulting for industrial and government clients, where he gained extensive expertise in petroleum storage tank management, hazardous waste site closures under EPA Superfund, Title V permit compliance, nuclear licensing, and environmental oversight for demolition and construction projects. John's strengths include contract management, quality assurance, safety oversight, and due diligence support, along with experience in managing project schedules, budgets, and configuration control activities.

EXPERIENCE OF PROJECT TEAM - KEITH (SUB CONSULTANT)

The KEITH team has the expertise to provide a wide variety of general and detailed civil engineering services to respond to the diverse needs within a community. KEITH staff have provided comprehensive engineering services involving many government agencies, institutions, and municipalities. These many years of collective experience mean that KEITH will consider the City's project development concerns throughout the entire design and construction processes.

When planning, programming, and/or assessing new construction or renovations to existing facilities, the KEITH team is cognizant of utility operational requirements and the impact they have on our design work and schedule to successfully complete any work authorizations.

KEITH's capable, experienced personnel assigned to this contract are as follows:

OMAR RODRIGUEZ, PE, CFM, ENV SP - CIVIL ENGINEER

Omar Rodriguez is an emerging engineering professional specializing in Hydrology and Hydraulic Modeling and Water Resources engineering. He is heavily involved in Floodplain Management, Urban Drainage, and Climate Adaptation. Gaining experience in water resources and civil engineering design projects including water, sewer, drainage systems, stormwater master plans, and flood mapping as well as County and State-Wide permitting, Omar has demonstrated his various abilities and qualifications as an engineer including Flood Risk Management implementation using CAD, GIS, and Modeling software.

NILES WARRICK, PE, CFM, ENV SP - CIVIL ENGINEER

Niles Warrick is an emerging engineering professional gaining experience in civil design projects including stormwater, water, sewer, and drainage systems as well as County and Statewide permitting experience. Niles has demonstrated his various abilities and qualifications as an engineer including utility design implementation using AutoCAD Civil 3D. Niles also has aviation experience as he has worked directly with project management at Fort Lauderdale-Hollywood International Airport (in an assistant project manager role, contracted through KEITH).


CAVEL WILLIAMSON, PE - CIVIL ENGINEER

Cavel Williamson is a highly skilled and motivated Professional Engineer with experience working on interdisciplinary teams for watershed management plans, stream restoration projects, watershed modelling, and vulnerability assessments. She is experienced in fields related to surface hydrology, hydraulics, water quality, and regulatory compliance in Florida.

PROJECT TEAM COLLABORATION

UES and KEITH have performed the following efforts together within the last five years.

PROJECT TITLE	LOCATION
New Monrovia Unpaved Roadway	Martin County, FL
Riverland Paseo Park Parking Lot Expansion	Port St. Lucie, FL
Keiser University Residence Hall	West Palm Beach, FL
Star Hollywood Tower	Hollywood, FL
JP Lyons Lane Drainage Improvements	Pembroke Park, FL
13855 NW 17th Avenue (7.25-acre site)	Miami, FL
FDOT D4 SR5 US1 - SR 870 to SE 7th Street	FDOT District 4
DC Alexander Park	Fort Lauderdale, FL
The Adderley	Tampa, FL
Port of Miami Tunnel Borings	Miami, FL



TAB 9
RESUMES
OF KEY PERSONNEL

KEY PERSONNEL RESUMES - UES (PRIME)

EDUCATION

BS, Geology, Indiana University
(White Star Endowment
Scholarship)

YEARS OF EXPERIENCE

35

LICENSES

- Professional Geologist
FL #1344
- Florida Asbestos Consultant
#AX71
- Florida Water Well
Contractor #11236
- Asbestos Contractor
Supervisor - Provider #:
FL-49-0003810, Cert #:
07201803
- Asbestos Survey &
Mechanical Inspector -
Provider #: FL-49-0003810,
Cert #: 07191801
- Asbestos Management
Planner - Provider #: FL-49-
0003810, Cert #: 07191801
- Asbestos Project Designer
- Provider #: FL-49-0003810,
Cert #: 07211801

FREDERICK G. KAUB, PG, LAC

MANAGING PARTNER/PROFESSIONAL GEOLOGIST/ASBESTOS CONSULTANT/
PRINCIPAL-IN-CHARGE

Mr. Kaub is a licensed Florida Professional Geologist and co-founder of GFA International, now part of UES Professional Solutions, LLC. He holds a BS in Geology from Indiana University and has over 35 years of experience in geotechnical engineering. He serves as Executive Liaison, overseeing geotechnical services including soil exploration, materials testing, and foundation analysis. Mr. Kaub has led investigations for major infrastructure projects such as dams, levees, canals, and stormwater treatment areas. He has served as an Expert Professional for the South Florida Water Management District and is active in numerous professional associations.

PROJECT EXPERIENCE

CITY OF MARATHON CONTINUING CONTRACT (CURRENT)

MARATHON, FL

As Principal in Charge Mr. Kaub manages this continuing contract including geotechnical, materials testing and inspections for the Monroe County municipality.

MIAMI DADE PUBLIC SCHOOLS CONTINUING CONTRACT (CURRENT)

MIAMI DADE COUNTY, FL

As Principal in Charge Mr. Kaub manages this continuing contract involving environmental services for the largest school system in the state of Florida (with 352 K-12 schools).

COLLIER COUNTY PUBLIC SCHOOLS CONTINUING CONTRACT (CURRENT)

COLLIER COUNTY, FL

As Principal in Charge Mr. Kaub manages this continuing contract consisting of geotechnical, materials testing and inspection services for the school system consisting of 78 K-12 schools.

ST. LUCIE COUNTY PUBLIC SCHOOLS CONTINUING CONTRACT (CURRENT)

ST. LUCIE COUNTY, FL

As Principal in Charge Mr. Kaub manages this continuing contract

including geotechnical, materials testing and inspections for this school system with 52 K-12 schools.

LEE COUNTY PUBLIC SCHOOLS CONTINUING CONTRACT (CURRENT)

LEE COUNTY, FL

As Principal in Charge Mr. Kaub manages this continuing contract consisting of geotechnical, materials testing and inspections for this 68-school district including K-12 schools.

MIRAMAR PUBLIC SAFETY COMPLEX

MIRAMAR, FL

This project involves new construction of a 24,000 SF building complex to accommodate the Historic District Police Substation, Crime Lab/Evidence Storage, Logistics, Utility Storage, and other related functions. The building will include admin offices, a community room, and a surface lot for safety vehicles. UES performed a preliminary Geotechnical Exploration with three SPT borings to depths of 20 feet and two SPT borings to 10 feet. UES also performed a final Geotechnical Exploration post-demolition with five SPT borings to depths of 20 feet below existing grade.

EDUCATION

BA, Loyola University,
New Orleans

YEARS OF EXPERIENCE

25

ANDREW (ANDY) HUERTAS

BRANCH MANAGER/AUTHORIZED REPRESENTATIVE

Andy has over 25 years of experience in construction, specializing in safety consulting, competent person training, engineering support, rental equipment operations, and contract management. He has led safety programs aligned with OSHA standards and provided field-based training to enhance jobsite compliance and performance. Andy's broad expertise supports efficient project execution, risk mitigation, and operational oversight across a variety of construction environments.

PROJECT EXPERIENCE

MIAMI WORLDCENTER

MIAMI-DADE, FL

Mr. Huertas provided safety consulting, labor support, access design, and equipment for exterior building access. Services ensured compliance with safety standards and supported efficient high-rise construction operations.

PORT OF MIAMI TUNNEL PROJECT

MIAMI-DADE, FL

Mr. Huertas provided equipment and safety training for over 500 workers. Conducted weekly safety meetings to ensure proper equipment use and maintain jobsite safety compliance.

JW MARRIOTT TAMPA WATER STREET

TAMPA, FL

This project involved design-build scaffolding solutions for a high-rise hotel project. Services included supported scaffolding, overhead protection, and suspended scaffolding installation. Mr. Huertas provided design and engineering for advanced safety systems to protect on-site workers during construction.

EDUCATION

BS, Business Management,
University of Phoenix
Accredited Program for
Construction Safety, Florida
Atlantic University

YEARS OF EXPERIENCE

16

CERTIFICATIONS

- Professional Safety Management Accreditation - Florida Atlantic University
- State of Florida Notary Public

JENIFFER CLARK

ASSISTANT PROJECT MANAGER/CONTRACT SUPPORT LIAISON

Jeniffer Y. Clark is an experienced construction and property management professional with more than 13 years of construction management experience and over three years in commercial property management. She has served in project management, superintendent, project coordination, and office management roles on a wide range of residential, commercial, and large-scale construction projects throughout South Florida. Her background includes staff and subcontractor supervision, contract and document control, budgeting and cost tracking, scheduling, and coordination with clients, vendors, and municipal agencies. Jeniffer's expertise also extends to Class "A" commercial property management, where she supported daily building operations, tenant relations, capital planning, maintenance coordination, and contractor oversight. She is bilingual in English and Spanish and is recognized for her organizational skills, attention to detail, and ability to manage complex, fast-paced environments.

Earlier in her career, Jeniffer served six years in the United States Coast Guard, where she worked as a Marine Science Technician supporting high seas law enforcement, environmental protection, and hazardous materials response. Her military experience includes environmental impact assessments, spill containment and cleanup coordination, and certification as a Hazardous Materials Handler with OSHA 40-hour HAZWOPER training.

EMPLOYMENT HISTORY/PROJECT EXPERIENCE

UES PROFESSIONAL SOLUTIONS, LLC - BUSINESS DEVELOPMENT REPRESENTATIVE/CONTRACT & CLIENT LIAISON

MIAMI, FL (2025-PRESENT)

Jeniffer managed daily construction operations including supervision of staff and subcontractors, scheduling, coordination of materials and equipment, and maintenance of daily job logs. She collaborated with clients and project teams to manage budgets, schedules, and construction timelines.

PROJECT MANAGER / SUPERINTENDENT - TYPE A CONSTRUCTION

MIAMI, FL (2020-2024)

Jeniffer managed daily construction operations including supervision of staff and subcontractors, scheduling, coordination of materials and equipment, and maintenance of

daily job logs. She collaborated with clients and project teams to manage budgets, schedules, and construction timelines.

PROJECT MANAGER / SUPERINTENDENT - RIAANT CONTRACTORS

MIAMI, FL (2020-2022)

Jeniffer oversaw field operations and subcontractor performance, coordinated deliveries, maintained site documentation, and adjusted work plans to meet project deadlines while supporting budget and schedule objectives.

**PROJECT COORDINATOR & OFFICE MANAGER -
KROME CONSTRUCTION**

MIAMI, FL (2018–2020)

Jeniffer provided contract administration, accounts payable, payroll processing, subcontractor pay applications, and office operations management. She also supported multiple project managers and served as liaison between project teams and clients.

PROPERTY ASSISTANT - RYAN COMPANIES

MIAMI, FL (2010–2011)

Jeniffer supported management of a Class “A” commercial office tower, coordinating maintenance contractors, tenant services, work orders, move-ins/move-outs, and special events, while maintaining property records and databases.

**PROPERTY ADMINISTRATOR - TURNBERRY
ASSOCIATES**

AVENTURA, FL (2008–2010)

In this capacity, Jeniffer assisted with daily operations of a Class “A” office building, including tenant relations, budget monitoring, contractor procurement, capital planning support, inspections, and supervision of property staff.

**EXECUTIVE ASSISTANT / PROJECT COORDINATOR -
COASTAL CONSTRUCTION GROUP**

MIAMI, FL (2007–2008)

In this role, Jeniffer supported the Vice President of Operations on the St. Regis Bal Harbour project, managing office operations, HR support, document preparation, subcontractor plan distribution, travel coordination, and project reporting.

**PROJECT COORDINATOR/OFFICE MANAGER/
EXECUTIVE ASSISTANT - TURNBERRY ASSOCIATES**

AVENTURA, FL (2003–2007)

Jeniffer provided project coordination and administrative support for a two-tower residential development, including document control, accounts payable, payroll processing, permit facilitation, subcontractor coordination, and meeting and event management.

**DOCUMENT CONTROL MANAGER - HENSEL PHELPS
COMPANY**

MIAMI, FL (2002–2003)

Jeniffer managed document control for the Miami Airport South Terminal project, including plan logs, RFI tracking, accounts payable, payroll processing, HR onboarding, and estimating support.

**MARINE SCIENCE TECHNICIAN / SAFETY OFFICER -
UNITED STATES COAST GUARD (1993–1999)**

Jeniffer performed environmental protection, hazardous materials response, and maritime law enforcement operations. Additionally, she conducted environmental impact assessments, coordinated spill containment and cleanup efforts, and managed safety training programs for shipboard personnel.

EDUCATION

MS, Environmental Engineering, Florida International University

BS, Agricultural Science, Kwame Nkrumah University of Science and Technology

YEARS OF EXPERIENCE

20

LICENSES

- Professional Engineer - MI #58528

CERTIFICATIONS

- Florida Licensed Asbestos Consultant - #AX133
- Project Management Professional - #2171146
- OSHA HAZWOPER 40 HR and HAZWOPER 8 HR Refresher
- Qualified Stormwater Management Inspector - FL #27542
- Asbestos Contractor Supervisor - Provider #FL-49-0003810, Cert#05262201
- Asbestos Survey & Mechanical Inspector - Provider #FL-49-0003810, Cert #08022201AM
- Asbestos Management Planner - Provider #FL-49-0003810, Cert #03222301
- Certified Safety Professional #CSP-42813
- Certified Hazardous Materials Mgr. #35129

JONATHAN BULLEY, MS, PMP, CSP, CHMM, LAC

SENIOR ENVIRONMENTAL MANAGER

Mr. Bulley is an Environmental Professional with 20 years of experience in the Environmental Consulting industry. He has extensive experience with many complex environmental projects ranging from local, privately owned sites to large international sites owned by large corporations, such as Chevron. He specializes in Phase I and Phase II Environmental Site Assessments, Storage Tank Closures, Contamination Assessment and Reporting, Site Remediation and Closure, Natural Attenuation Monitoring, and Field Sampling Procedures, as well as Asbestos Surveys and Asbestos Consulting. As the Senior Environmental Manager for UES, Mr. Bulley oversees all environmental projects, coordinates the Environmental Department staff to complete field work, as well as develops scopes and budgets for projects.

PROJECT EXPERIENCE

MIAMI-DADE COUNTY PUBLIC SCHOOLS - CONTINUING CONTRACT

MIAMI-DADE COUNTY, FL
UES performed Asbestos Hazard Emergency Response Act (AHERA) three year re-inspections at 352 K-12 schools throughout Miami-Dade County.

BROWARD COUNTY SCHOOL BOARD

BROWARD COUNTY, FL
UES performed AHERA three year re-inspections at various schools throughout Broward County.

PALM BEACH COUNTY FACILITIES DEVELOPMENT & OPERATIONS

PALM BEACH COUNTY, FL
UES has performed asbestos surveys at various Palm Beach County facilities, including bridges and the county airport, in support of planned renovations or demolitions. Interior and exterior areas were inspected by Certified AHERA Inspectors, with field inspections, bulk sampling, and reporting conducted in accordance with EPA regulations and Florida Administrative Code. Samples were collected based on material type and quantity, and analyzed using EPA's Polarized Light Microscopy

(PLM) method. Findings were compiled in pre-renovation or pre-demolition reports submitted to Palm Beach County Facilities Development & Operations. Additionally, UES has provided asbestos abatement oversight, monitoring, and clearance services at facilities where asbestos was identified and removal was required.

ROYAL CARIBBEAN CAMPUS PROJECT

MIAMI, FL
UES developed a sampling plan for assessment of potential arsenic soil impacts for its new 10-story, 380,000-sq.-ft. headquarters building associated with abutting railroad for submittal to the Pollution Remediation Section (PRS) of Miami-Dade County Division of Environmental Resources Management (DERM) for review and approval.

BRADFORD MARINE - PHASE I ACM, 19-1638

FORT LAUDERDALE, FL
A Phase I Environmental Site Assessment (ESA) was prepared for the subject property in December 2018.

The Phase I ESA identified the site's historic use as a marine maintenance facility as onsite recognized environmental conditions (RECs). Furthermore, adjoining properties including a railroad yard, lumber yard, and historic gasoline service stations were listed as offsite recognized environmental conditions. UES performed a Limited Soil and Groundwater Assessment for potential site developers and investors in December 2018. The results of this limited assessment suggested widespread impacts to soils, sediment, and groundwater at the subject property. Subsequently, in April 2019, UES performed a Site Assessment to delineate horizontal and vertical impacts of contaminants of concern onsite. UES conducted source removal activities through the excavation and disposal of impacted soils. An Interim Source Removal Report was submitted to the Broward County Environmental Engineering and Permitting Division with recommendations of No Further Action. A No Further Action Approval Letter was issued by the Division in January 2020.

BOCA RESORT

BOCA RATON, FL

The Boca Resort facility combines hotel and residential space, recreational facilities, a marina, conference center and support buildings and operations. UES has conducted NESHAP asbestos surveys for suspect asbestos-containing building materials and Lead Based Paint Surveys in multiple onsite buildings prior to renovations or demolitions for new construction. Interior and exterior portions of the 18 apartment buildings. Field inspection, bulk sample collection activities and report preparation were completed by Certified AHERA (Asbestos Hazard Emergency Response Act) Inspectors in accordance with applicable US Environmental Protection Agency (EPA) rules and the Florida Administrative Codes. The appropriate number of bulk samples were collected based on the category of homogeneous materials and the quantity of the materials present. Building materials samples were analyzed for asbestos according to the EPA Polarized Light Microscopy (PLM) Method. The findings of the asbestos surveys were summarized in pre-demolition asbestos survey reports. Additionally, UES has performed asbestos abatement oversight, monitoring and clearance activities for rooms where asbestos was present and required abatement.

17.25 ACRE AGRICULTURAL SITE

CUTLER BAY, FL

UES completed a Phase I ESA and Phase II ESA, Site Assessment Report, quarterly groundwater monitoring, site-specific background study and soil management plan at the 17.25-acre agricultural property located in the southeast and northeast quadrant of the intersection of Old Cutler Road and SW 107th Avenue, Unincorporated Miami-Dade County, Florida. The goals of the assessments were to allow for site drainage plan approval and to further the site assessment process pursuant to Chapter 24 of the Miami-Dade Code of Ordinances and Rule 62-780 of the Florida Administrative Code. UES advanced 59 soil borings and monitoring wells using a sonic drilling method with a Terra Sonic track-mounted drill rig. Each of the soil samples collected was described according to the USCS. Groundwater samples were then collected from all 59 monitoring wells, submitted, and analyzed for RCRA Metals (arsenic, cadmium, chromium, lead, iron, and copper; Ammonia; and Nitrates/Nitrites in a NELAP certified chemical laboratory. Fifty-three (53) groundwater samples were analyzed for Organochlorine pesticides (OCP). Selected groundwater samples were analyzed for Organophosphorus pesticides (OPP); Chlorinated herbicides; and Manganese and Zinc. Additionally, six groundwater samples were also analyzed for chlorinated herbicides. Based on the groundwater results, DERM requested installation of 15 intermediate wells that were installed to 20 feet bgs, and sampled for iron, nitrate/nitrites, and manganese. A Site Assessment Report was prepared and approved. A Brownfields Site Rehabilitation Agreement was approved for the Site.

EDUCATION

BS, Geology

YEARS OF EXPERIENCE

7

CERTIFICATIONS

- CPR and First Aid Training
- Hazcom: In Sync with GHS
- Environmental Awareness Parts 1 & 2
- OSHA 40 HR HAZWOPER

JODIE ARSCOTT

ENVIRONMENTAL DEPARTMENT MANAGER

Jodie has seven years of experience in project management and field expertise for projects involving Site Investigations, Contamination Assessments, Phase I and II Environmental Site Assessments, Source Removal, Remediation, and Threatened and Endangered Species Surveys. Her experience covers field activities, report generation, proposal preparation, cost estimates, supervising drilling operations, soil management plans, and health and safety plans.

PROJECT EXPERIENCE**CITY OF MARATHON PHASE I ESA**
MARATHON, FL

UES completed Phase I Environmental Site Assessments (ESAs) in accordance with ASTM E1527-13 for The Quay Property at 12650 Overseas Highway and Seven Mile Marina Property at 1090 Overseas Highway in Marathon, Florida in 2022. The purpose of the assessments was to identify Recognized Environmental Conditions in connection with the subject properties as defined in ASTM E1527-13. The subject properties consisted of two parcels of land approximately 3 acres occupied by a former restaurant and a boat ramp with associated parking lot. UES reviewed aerial photographs, city directories, topographic maps, property records, regulatory databases and performed site visits and interviews for the assessments. The assessment performed by UES did not identify Recognized Environmental Conditions at the subject property at one of the properties. The assessments were completed by UES within budget and schedule.

PALM BEACH COUNTY PUBLIC SCHOOL PHASE I ESA

PALM BEACH COUNTY, FL
UES has conducted Drinking Water Quality Monitoring for Lead and Copper concentrations at Palm Beach County Elementary,

Middle and High Schools. Drinking water sampling activities include mobilizing to the facility on a Friday (after conclusion of school operations) to survey sample locations, develop sample IDs, and bag locations to prevent use. UES mobilized to the facility on Saturday to collect drinking water samples, including collection of first draw and flush samples. An initial sample (first draw) is collected at each sample location. Then, the drinking water source is allowed to flush for 30 seconds before a flush sample is collected. Samples are submitted to a NELAC-accredited laboratory for analysis of Copper and Lead by EPA Method 200.8 After collecting the sample, the location is unbagged and made available for use again. Once available, the lab analytical report is reviewed for results exceeding the applicable EPA Action Limits or the Maximum Contaminant Level Goal (MCLG). UES then provides the lab analytical report, exceedance summary, field notes, and photo log of exceedances to the School District. UES completed sampling, monitoring and reporting activities within budget and on schedule.

EDUCATION

B.S. Psychology, University of Florida

YEARS OF EXPERIENCE

9

NATHAN (NATE) AYYAR**BUSINESS OPERATIONS MANAGER**

With nine years of experience, including extensive construction industry knowledge, Nate Ayyar serves as the Business Manager for UES' Medley, Florida branch. In this capacity he oversees day-to-day operations, project coordination, and client service delivery. With one year of experience at UES, Nate has quickly established himself as a dependable leader known for his strong organizational skills, collaborative approach, and commitment to operational excellence. In his role, Nate ensures that field services, laboratory activities, and administrative workflows run efficiently and in alignment with UES standards. He supports project teams in meeting schedules, maintaining quality, and delivering responsive service to clients across South Florida. Nate is also instrumental in fostering a positive work environment and strengthening communication between staff, management, and clients. Driven, detail-oriented, and focused on continuous improvement, Nate contributes to the Medley branch's growth by implementing effective processes and supporting the success of both his team and the projects they serve.

PRIOR PROJECT EXPERIENCE

ATLANTIC SAPPHIRE

HOMESTEAD, FL

Mr. Ayyar served as Project Manager within a team that provided custom access solutions for a salmon fish farm. The project involved design build efforts for scaffold platforms to connect a multitude of 10,000 gallon tanks enabling mechanical engineers and welders to perform their scopes of work. Mr. Ayyar's responsibilities included oversight of scaffold design, equipment delivery/installation, and performing safety reviews.

JW MARRIOTT TAMPA WATER STREET

TAMPA, FL

This project involved design-build scaffolding solutions for a high-rise hotel project. Services included supported scaffolding, overhead protection, and suspended scaffolding installation. As Project Manager, Mr. Ayyar's responsibilities included oversight of scaffold design, equipment delivery/

installation, and performing safety reviews.

RIVER LANDING

MIAMI, FL

Mr. Ayyar served as Project Manager within a team constructing design-build scaffolding for a residential high rise. The project involved supported scaffolding, overhead protection, and suspending scaffolding installation. Mr. Ayyar's responsibilities included oversight of scaffold design, equipment delivery/installation, and performing safety reviews.

EDUCATION

BS, Environmental Sciences

YEARS OF EXPERIENCE

7

CERTIFICATIONS

- OSHA 40 HR HAZWOPER

RACHEL DOBRILOVIC

ENVIRONMENTAL SPECIALIST/ENVIRONMENTAL SCIENTIST

Rachel has over seven years of experience in performing Phase I Environmental Site Assessments (ESAs) for due-diligence and Phase II Environmental Site Assessments. Her field investigations include groundwater and soil contamination generated by various commercial and industrial sources such as gasoline stations, dry cleaning facilities, vehicle maintenance facilities, golf courses, and agricultural lands. Rachel's experience covers supervision of drilling operations, source removal, and underground storage tank removal. She has a working knowledge of soil and groundwater sampling methodology pursuant to the Florida Department of Environmental Protection Standard Operating Procedures (FDEP SOPs) and American Society for Testing and Materials (ASTM), monitoring well installation location and oversight, chain of custody record keeping, data management and interpretation, and report preparation.

PRIOR PROJECT EXPERIENCE**ACTIVE METALS RECYCLING CENTER**

POMPANO BEACH, FL

Rachel conducted groundwater monitoring at an active metals recycling center for semi-annual sampling for natural attenuation monitoring.

less than one acre to over 2,000 acres of land.

ALL ABOARD FLORIDA

SOUTH FLORIDA

Rachel has completed a comprehensive turbidity study at various sites throughout Palm Beach County to Miami-Dade County.

VARIOUS RESIDENTIAL & COMMERCIAL PROPERTIES

FLORIDA

Rachel has been involved with completing Phase I Environmental Site Assessments throughout South Florida. These were performed in general accordance with the American Society of Testing of Materials (ASTM) Standard Practice for evaluation of environmental risk by determining the potential of recognized environmental concerns (RECs) associated with the subject property and surrounding properties. She conducted field reconnaissance, reviewed regulatory files and reviewed historical documents. Project sites included agricultural properties, shopping centers, automotive repair, commercial office buildings, residential neighborhoods, retail gasoline stations, and undeveloped properties, which ranged from

PROPOSED WAWA GAS STATIONS

SOUTH FLORIDA

Rachel was involved in Phase I & II Environmental Site Assessments, soil/groundwater sampling, and clean fill assessments at various sites during pre-acquisition assessments. She collected and logged subsurface samples that were field screened for the presence of volatile organic compounds, supervised drilling operations of on-site monitoring wells, and performed subsequent groundwater sampling.

EDUCATION

BS, Chemistry, University of Tennessee at Chattanooga

YEARS OF EXPERIENCE

20+

CERTIFICATIONS

- DOT HAZMAT Shipping 30-Hour OSHA Industrial Worker

CLEARANCES

- Transportation Worker Identification Credential (TWIC)

JOHN JONES**ECOLOGICAL SERVICES MANAGER**

With more than 20 years of experience, John Jones serves as Ecological Manager for UES' South Florida branches. He specializes in project management, environmental compliance, and sustainability initiatives, with a proven background in permitting and licensing for utility facilities, wetlands identification and permitting, biological assessments, and regulatory risk management. His career includes leadership roles at NextEra Energy and consulting for industrial and government clients, where he gained extensive expertise in petroleum storage tank management, hazardous waste site closures under EPA Superfund, Title V permit compliance, nuclear licensing, and environmental oversight for demolition and construction projects. John's strengths include contract management, quality assurance, safety oversight, and due diligence support, along with experience in managing project schedules, budgets, and configuration control activities.

PRIOR PROJECT EXPERIENCE**OCEAN REEF CONDOMINIUM**

HILLSBORO BEACH, FL

John provided ecological consulting and permitting services. The scope included Coastal Construction Control Line (CCCL) permitting, FEMA flood zone permitting, Broward County environmental assessments, and coordination with state and federal agencies for species protection and environmental compliance. UES managed the permitting process from initial applications through agency approvals, ensuring the project met all regulatory requirements.

MENDOZA RESIDENCE PROPERTY

STUART, FL

UES conducted a 100% gopher tortoise survey. The assessment included both desktop and field evaluations to identify suitable habitat, map burrow locations with GPS, and document activity status in accordance with Florida Fish and Wildlife Conservation Commission guidelines. Results were provided in a detailed report with permitting recommendations to support future development.

**LIBERTY PARK -
ECOLOGICAL ASSESSMENT**

VERO BEACH, FL

Conducted ecological assessments in coordination with the U.S. Environmental Protection Agency (USEPA) and Florida Fish and Wildlife Conservation Commission (FWC), including endangered and threatened species evaluations and wetland delineations to support regulatory compliance and project development.

ASPIRE AT LAKEWOOD PRESERVE

FORT PIERCE, FL

Completed a Wetlands and Protected Species Assessment for the 18.63-acre Aspire at Lakewood Preserve property in Fort Pierce, Florida. Services included wetland delineation, habitat surveys, and GPS mapping with a final report providing permitting and mitigation recommendations to support development planning.

KEY PERSONNEL RESUMES - KEITH (SUBCONSULTANT)



OMAR RODRIGUEZ, PE, CFM, ENV SP
Civil Engineer



PROFILE

Omar Rodriguez is an emerging engineering professional specializing in Hydrology and Hydraulic Modeling and Water Resources engineering. He is heavily involved in Floodplain Management, Urban Drainage, and Climate Adaptation. Gaining experience in water resources and civil engineering design projects including water, sewer, drainage systems, stormwater master plans, and flood mapping as well as County and State-Wide permitting, Omar has demonstrated his various abilities and qualifications as an engineer including Flood Risk Management implementation using CAD, GIS, and Modeling software.

RELEVANT PROJECT EXPERIENCE

Drainage Improvements at US-1 and NE 14th St, Pompano Beach, FL: Project Manager. KEITH, under its continuing contract with the City, is providing civil engineering, surveying, and subsurface utility engineering for this US1 and NE 14th Street Drainage Improvement project. This comprehensive drainage improvement project aims to significantly enhance the stormwater management system in the City of Pompano Beach. The project involves the installation of new storm drainage infrastructure and the cutting of swales to optimize drainage functionality and mitigate flooding risks. This project area primarily consists of residential properties. Key components of the project include: **Installation and Reconstruction:** A total of 54 storm drain structures will be installed or reconstructed to ensure efficient water flow and prevent blockages. **Storm Drain Piping:** Approximately 4,765 linear feet of storm drain piping will be laid to facilitate the effective conveyance of stormwater. **Enhanced Drainage Functionality:** The project will incorporate advanced engineering techniques to improve the overall drainage capacity and resilience of the area. TBG Consulting provided cost estimating services to ensure that the project remains within budget while achieving its goals of improved drainage and reduced flood risk.

Cypress Road Improvements, Plantation, FL: Task Manager. KEITH, under a continuing services contract with the City, assisted with development of this project involving signal upgrades, milling and resurfacing, roundabout design, drainage improvements, additional sidewalk, and the addition of corridor-wide sharrow pavement markings and respective signage. Services KEITH provided include survey, SUE, civil engineering, landscape architecture, and transportation engineering. KEITH also managed a team of professional contractors providing lighting analysis and design and geotechnical services.

Zone 2 Drainage Study, Plantation, FL: Task Manager. The KEITH Team, under its continuing services contract with the city, was retained to provide a full range of engineering services to provide an evaluation of the existing stormwater system and develop a Capital Improvement Program (CIP). The final product will be compiled in a Stormwater Master Plan. KEITH will leverage its expertise in hydrology and hydraulics modeling to evaluate the overall existing stormwater system, identify potential areas at risk of flooding and evaluate future required stormwater system upgrades. The culmination of the study's effort will be presented in the new and comprehensive stormwater master plan.

Fire Station No. 52 Design-Build, Pompano Beach, FL: Task Manager. KEITH, under our continuing services agreement with the City, assisted the Client, as subconsultant, in developing a KEITH Facility project including a two-story multi-bay facility. KEITH provided full services to the Client including civil engineering, planning, survey/SUE, landscape architecture, and construction program management. The project brought the community a much-needed resource for safety and emergency management.

EDUCATION

- 2023
MS, Hydroinformatics and Water Management, Université Côte d'Azur
- 2023
MS, Hydroinformatics and Water Management, Brandenburg University of Technology Cottbus-Senftenberg
- 2023
MS, Hydroinformatics and Water Management, Warsaw University of Technology
- 2023
MS, Hydroinformatics and Water Management, Technical University of Catalonia
- 2023
MS, Hydroinformatics and Water Management, Newcastle University
- 2018
BS, Civil Engineering, Escuela Superior Politecnica Del Litoral

YEARS OF EXPERIENCE

Industry: 7
KEITH: 7

PROFESSIONAL REGISTRATIONS

- Professional Engineer, 94885, FL, 2022
- ENV SP, 61736, 2024
- CFM, US-19-11500
- Temporary Traffic Control Certification, Advanced, 54294



NILES WARRICK, PE, CFM, ENV SP
Civil Engineer



PROFILE

Niles Warrick is an emerging engineering professional gaining experience in civil design projects including stormwater, water, sewer, and drainage systems as well as County and Statewide permitting experience. Niles has demonstrated his various abilities and qualifications as an engineer including utility design implementation using AutoCAD Civil 3D. Niles has aviation experience as he's worked directly with project management at Fort Lauderdale-Hollywood International Airport as an assistant project manager contracted through KEITH.

RELEVANT PROJECT EXPERIENCE

Pompano Crossings NE 48th Street Roadway Improvements, Pompano Beach, FL: Task Manager. The project scope included roadway improvements and consisted of roadway widening to accommodate additional turn lanes and bicycle paths, curb and gutter, sidewalk repair, and swale restoration. KEITH's services included due diligence engineering and planning considerations; site plan preparation, coordination, and processing; access management plans; plat preparation, processing, and recordation; ALTA/NSPS land surveying; preliminary and final engineering; tree inventory and appraisal; tree disposition plan; irrigation plans; landscape plans; water distribution and sanitary sewer plans; paving, grading, and drainage plans; stormwater pollution plans; and final construction documents. The project was built in multiple phases.

Fire Station No. 114 Design/Build, Pompano Beach, FL: Task Manager. KEITH, as a subconsultant, provided professional services for the new 2-story 13,990-SF facility housing three bays and accommodating as many as eleven firefighters, one city outreach person, and Building Support Functions. KEITH provided services to the Client including surveying, planning, and engineering.

Hammondville Affordable Housing, Pompano Beach, FL: Project Manager. KEITH assists in the development of a KEITH Life project, which includes Section 8 Housing. The project is a proposed workforce multi-family development with 117 units in a five-to six-floor building. KEITH is responsible for survey, SUE, planning, civil engineering, and landscape architecture services. KEITH has identified the following agencies that require coordination, submittals, or permitting throughout the project: City of Pompano Beach, Broward County, School Board of Broward County, and Florida Department of Transportation (FDOT).

Citywide Stormwater Master Plan Contract, Parkland, FL: Task Manager. KEITH was retained to provide a full range of engineering services in order to develop a comprehensive Stormwater Master Plan (SWMP) for the City. The SWMP involves input from the public, City Officials, and staff. KEITH evaluated the existing stormwater system, updating the GIS database, and evaluating future developments and required improvements. KEITH was responsible for developing an "Existing Conditions Model" and "Proposed Conditions Model" using the public domain United States Environmental Protection Agency, Stormwater Management Model for the Ranches area (652-acres), the Hendrix Farms Area (596-acres), and Pine Tree area (1,987-acres) covering a total of approximately 3,235 acres.

Youth Sports Complex, Pompano Beach, FL: Task Manager. KEITH assisted the Client in the development of this KEITH Play project that includes several multi-purpose sports fields, clubhouse, restrooms, storage, offices, landscaped walking paths, preservation of several mature canopy trees, and a 180-space parking lot in the 10-acre complex. KEITH, as prime consultant, provided full services to the Client throughout all design phases including public outreach, planning, design development and site plan approval, and ultimately permitting and construction observation

EDUCATION

2018
BS, Civil Engineering, University of Central Florida

YEARS OF EXPERIENCE

Industry: 8
KEITH: 8

PROFESSIONAL REGISTRATIONS

CFM, 51464, 2022

ENV SP, 50555, 2022

Professional Engineer, 94320, 2022

Temporary Traffic Control Certification, Advanced, 66070, 2018



CAVEL WILLIAMSON, PE
Civil Engineer



PROFILE

Cavel Williamson is a highly skilled and motivated Professional Engineer with experience working on interdisciplinary teams for watershed management plans, stream restoration projects, watershed modelling, and vulnerability assessments. She is experienced in fields related to surface hydrology, hydraulics, water quality, and regulatory compliance in Florida. Cavell is a hard-working team player who strives to be successful and to be of value to her community.

RELEVANT PROJECT EXPERIENCE

Abbott Avenue Drainage Improvements Final Design, Surfside, FL: Civil Engineer. KEITH assisted the Client in developing the final phase of a KEITH Access project. KEITH provided survey, SUE, civil engineering, FDOT coordination, bidding assistance, and construction program management services. KEITH oversaw structural engineering, mechanical and electrical engineering, and geotechnical engineering services provided by subconsultants.

SW 6th Street and SW 78th Avenue Improvements, Plantation, FL: Civil Engineer. KEITH designed and implemented corridor improvements along SW 78th Avenue aimed at enhancing multi-modal transportation and neighborhood aesthetics through a complete streets approach, supporting safe and accessible travel for vehicles, pedestrians, and cyclists. The project involved full design engineering services. This included roadway and drainage design, stormwater modeling, ADA accessibility, utility coordination, landscape and irrigation plans, permitting, and preparation of construction documents. KEITH also provided subsurface utility engineering, transportation, and landscape architecture services as well as construction administration, bid assistance, and CEI services.

Vulnerability Assessment, Hallandale Beach, FL: Civil Engineer. KEITH is providing the Client with a comprehensive Vulnerability Assessment for this KEITH Water project. The goal is to identify at-risk City assets by assessing their exposure and sensitivity and then prioritizing them with the help of City staff. As part of the report, the KEITH Team is compiling the Geographic Information System (GIS) files with appropriate metadata as well as regionally significant assets that are classified and defined in s. 380.093(2)(a) 1-4, F.S. The ongoing project is currently examining the exposure of the City's critical assets to high tide flooding, storm surge, and compound flooding, analyzing those risks, and assisting City staff by providing information for any public-led outreach efforts to discuss the results.

Vulnerability Assessment, Sunny Isles Beach, FL: Civil Engineer. KEITH is assisting the Client with a Vulnerability Assessment aimed at identifying, evaluating, and mitigating the City's exposure to coastal hazards. Funded by the Florida Department of Environmental Protection through the Resilient Florida Grant Program, this project is focused on protecting Sunny Isles Beach's critical infrastructure from the growing threats of sea level rise, storm surge, tidal flooding, and compound climate events. Through a combination of geospatial data analysis, sea level rise modeling, and scenario planning aligned with NOAA and FEMA standards, KEITH is delivering a robust risk assessment to help the City prioritize its most vulnerable assets. The resulting Adaptation Plan will include customized strategies for resilience, supported by community input and aligned with the City's broader planning efforts, including capital improvements and the Local Mitigation Strategy. This comprehensive effort not only meets compliance with Florida Statute 380.093 and Peril of Flood mandates but also reinforces the City's commitment to sustainable growth and climate resilience. KEITH's integrated approach emphasizes collaboration, data integrity, and long-term planning to help ensure Sunny Isles Beach is prepared for tomorrow's environmental challenges.

EDUCATION

2018
BS, Chemical and Process Engineering, University of the West Indies

YEARS OF EXPERIENCE

Industry: 7

PROFESSIONAL REGISTRATIONS

Professional Engineer, 101142, FL, 2025

Florida Qualified Stormwater Management Inspector, 42762



TAB 10
OFFICE LOCATIONS

OFFICE LOCATIONS - UES

For over six decades, UES Professional Solutions, LLC (UES) has provided essential engineering services throughout the United States, including **Environmental**, Geotechnical, Construction Materials Testing & Inspection, Building Code Compliance, and Building Envelope.

Our work includes public and private clients and consists of projects from transportation and healthcare to commercial and education. Our engineers, geologists, certified inspectors, and scientists offer an unwavering commitment to excellence, approaching each project as an opportunity to cultivate enduring relationships with our clients.

UES' Miami location (**responsible branch**) will provide environmental testing services contemplated under this contract.

OF EMPLOYEES - (PRIME) RESPONSIBLE BRANCH

Employees by Job Classification		
Discipline	# of Employees	
	Firm	Branch
Administrative	242	19
Project Managers	262	7
Biologist	7	1
CADD Technician	8	0
Civil Engineer	3	0
Construction Inspector	375	12
Estimator	20	1
Environmental Engineer	33	1
Environmental Scientist	73	4
Foundation/Geo Engineer	83	3
Geologist	89	2
Hydrologist	7	0
Industrial Hygienist	4	0
Material Engineer	6	0
Soils Engineer	20	3
Structural Engineer	13	24
Engineering Tech I & II	1,307	25
Lab Technicians/Supervisors	326	5
Driller	232	3
Other Employees	145	10
Total	3,947	111

CORPORATE HEADQUARTERS

UES Professional Solutions, LLC
 4205 Vineland Road
 Suite L1
 Orlando, FL 32801
 407-423-0504

RESPONSIBLE BRANCH

8050 NW 77th Court
 Medley, FL 33166
 305-249-8434
 Point of Contact: Andy Huertas - Branch Manager

ESTABLISHED

Corporation, 1964, Florida

AUTHORIZED IN FLORIDA

1964

OFFICERS

CEO: Dave Witsken
 President - South Florida: Travis Merrick
 CFO: Colin Lindahl
 Secretary/General Counsel - Benjamin Butterfield

FEIN

59-1117804

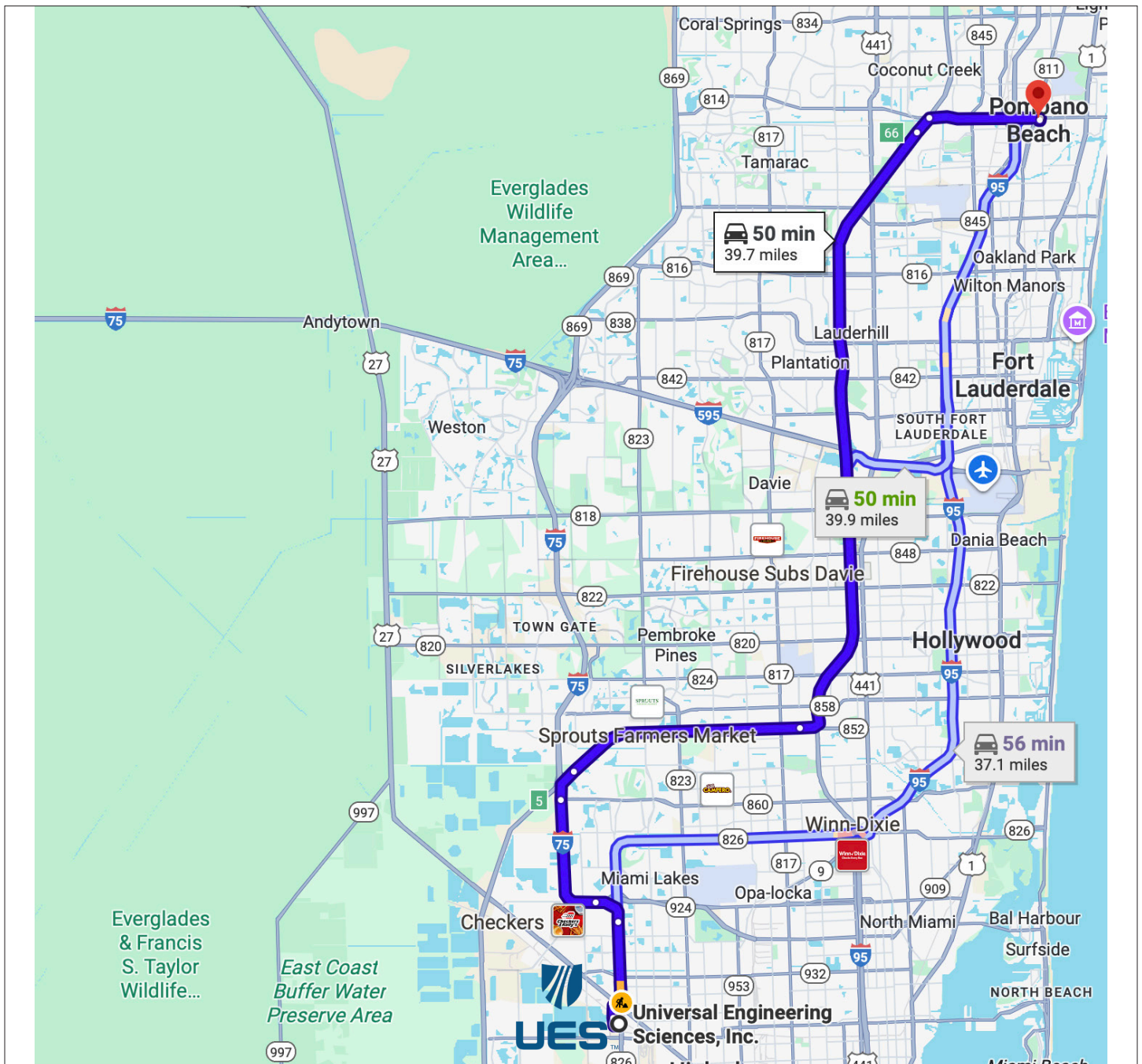
DUNS

06-481-7562

PROXIMITY - UES

UES' Medley branch is located only 50 minutes (under 40 miles) from the city of Pompano Beach.

Our staff is familiar with the city and will be able to reach most locations within the city promptly.



OFFICE LOCATIONS - KEITH

UES will engage KEITH as our subconsultant, to perform engineering services for stormwater and drainage improvement projects.

KEITH is a 60 + year old, majority woman owned, trans-disciplinary firm, based in Florida delivering a broad range of projects internationally. Based in Florida KEITH has office locations in Broward, Miami-Dade, Palm Beach, St Lucie, and Orange counties. The firm’s 200 professionals work every day to deliver on our mission to create, expand upon, preserve, and enhance our communities. The KEITH team has maintained multiple contracts directly with the City of Pompano Beach, serving both as a prime consultant and subconsultant for many years.

These projects include the existing contracts for Pompano Beach Water and Re-Use Treatment Projects, Professional Engineering Continuing Services, Professional Survey Continuing Services, Professional Landscape Architecture Continuing Services, and Pompano Beach Sustainability Projects Continuing Services. This extensive experience has enabled KEITH to develop a deep understanding of the City’s unique needs and establish enduring, strong relationships with City staff.

SUBCONSULTANT LOCATION

KEITH’s Pompano Beach branch is located at:

**301 East Atlantic Boulevard
Pompano Beach, FL 33060**

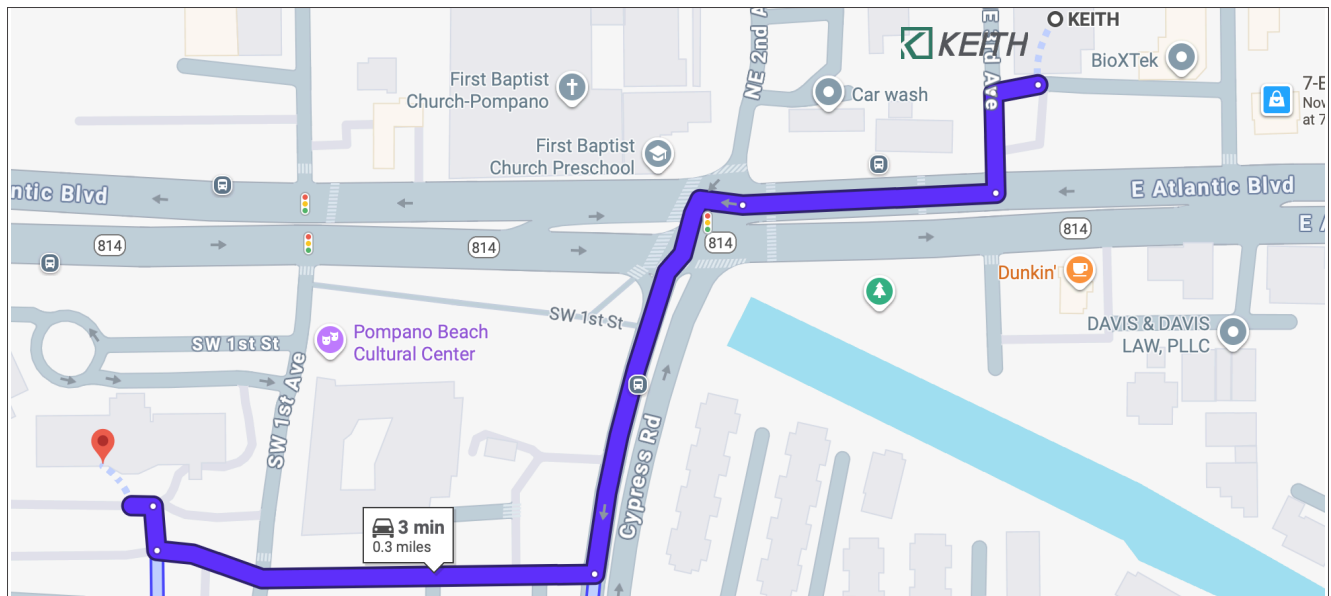
SUBCONSULTANT STAFF

KEITH’s Pompano Beach branch includes the following staff:

KEITH Employees by Job Classification Pompano Beach Location	
Role	# of Employees
Administrative	18
Professional	100

PROXIMITY - KEITH

KEITH is located only three minutes from the city of Pompano Beach.





TAB 11
CITY FORMS

COMPLETE THE PROPOSER INFORMATION FORM ON THE ATTACHMENTS TAB IN THE EBID SYSTEM. PROPOSERS ARE TO COMPLETE FORM IN ITS ENTIRETY AND INCLUDE THE FORM IN YOUR PROPOSAL THAT MUST BE UPLOADED TO THE RESPONSE ATTACHMENTS TAB FOR THE RFP IN THE EBID SYSTEM.

PROPOSER INFORMATION PAGE

RFP RLI 26-004, PROFESSIONAL ENVIRONMENTAL TESTING SERVICES - CCNA
(number) (RFP name)

To: The City of Pompano Beach, Florida

The below named company hereby agrees to furnish the proposed services under the terms stated subject to all instructions, terms, conditions, specifications, addenda, legal advertisement, and conditions contained in the RFP. I have read the RFP and all attachments, including the specifications, and fully understand what is required. By submitting this proposal, I will accept a contract if approved by the City and such acceptance covers all terms, conditions, and specifications of this proposal.

Proposal submitted by:

Name (printed) Andrew Huertas Title Branch Manager/Authorized Rep.

Company (Legal Registered) UES Professional Solutions, LLC

Federal Tax Identification Number 59-1117804

Address 8050 NW 77th Court

City/State/Zip Medley, FL 33166

Telephone No. (305) 249-8434 Fax No. N/A

Email Address ahuertas@teamues.com

LOCAL BUSINESS EXHIBIT "A"
 CITY OF POMPANO BEACH, FLORIDA
 LOCAL BUSINESS PARTICIPATION FORM

Solicitation Number & Title: RLI 26-004 PROFESSIONAL ENVIRONMENTAL TESTING SERVICES - CCNA

Prime Contractor's Name: UES Professional Solutions, LLC

<u>Name of Firm, Address</u>	<u>Contact Person, Telephone Number</u>	<u>Type of Work to be Performed/Material to be Purchased</u>	<u>Contract Amount or %</u>
KEITH - 301 East Atlantic Boulevard Pompano Beach, FL 33060	Alex Lazowick, PE (954) 788-3400	Civil Engineering	10

LOCAL BUSINESS EXHIBIT "A"

TIER 1/TIER 2 COMPLIANCE FORM

IN ORDER FOR YOUR FIRM TO COMPLY WITH THE CITY'S LOCAL BUSINESS PROGRAM AS A TIER 1 OR TIER 2 VENDOR, BIDDERS MUST COMPLETE THE INFORMATION BELOW AND UPLOAD THE FORM TO THE RESPONSE ATTACHMENTS TAB IN THE EBID SYSTEM.

TIER 1 LOCAL VENDOR

____ My firm has maintained a permanent place of business within the city limits and maintains a staffing level, within this local office, of at least 10 % who are residents of the City of Pompano Beach.

And/Or

____ My firm has maintained a permanent place of business within the city limits and my submittal includes subcontracting commitments to Local Vendors Subcontractors for at least 10 % of the contract value.

Or

My firm does not qualify as a Tier 1 Vendor.

TIER 2 LOCAL VENDOR

____ My firm has maintained a permanent place of business within Broward County and maintains a staffing level, within this local office, of at least 15% who are residents of the City of Pompano Beach

And/Or

____ My firm has maintained a permanent place of business within Broward County and my submittal includes subcontracting commitments to Local Vendors Subcontractors for at least 20% of the contract value.

Or

My firm does not qualify as a Tier 2 Vendor.

I certify that the above information is true to the best of my knowledge.

12/11/2025

(Date)

UES Professional Solutions, LLC

(Name of Firm)

BY: Andrew Huertas - Branch Manager

(Name)

Form W-9 (Rev. March 2024) Department of the Treasury Internal Revenue Service

Request for Taxpayer Identification Number and Certification

Go to www.irs.gov/FormW9 for instructions and the latest information.

Give form to the requester. Do not send to the IRS.

Before you begin. For guidance related to the purpose of Form W-9, see Purpose of Form, below.

Form W-9 fields: 1 Name of entity/individual, 2 Business name, 3a Tax classification, 3b Partnership/Trust/LLC, 4 Exemptions, 5-7 Address and account info.

Print or type. See Specific Instructions on page 3.

Part I Taxpayer Identification Number (TIN)

Enter your TIN in the appropriate box. The TIN provided must match the name given on line 1 to avoid backup withholding.

Social security number and Employer identification number boxes.

Note: If the account is in more than one name, see the instructions for line 1. See also What Name and Number To Give the Requester for guidelines on whose number to enter.

Part II Certification

Under penalties of perjury, I certify that:

- 1. The number shown on this form is my correct taxpayer identification number... 2. I am not subject to backup withholding... 3. I am a U.S. citizen or other U.S. person... 4. The FATCA code(s) entered on this form...

Certification instructions. You must cross out item 2 above if you have been notified by the IRS that you are currently subject to backup withholding because you have failed to report all interest and dividends on your tax return.

Sign Here Signature of U.S. person Date 01/02/2025

General Instructions

Section references are to the Internal Revenue Code unless otherwise noted.

Future developments. For the latest information about developments related to Form W-9 and its instructions, such as legislation enacted after they were published, go to www.irs.gov/FormW9.

What's New

Line 3a has been modified to clarify how a disregarded entity completes this line. An LLC that is a disregarded entity should check the appropriate box for the tax classification of its owner.

New line 3b has been added to this form. A flow-through entity is required to complete this line to indicate that it has direct or indirect foreign partners, owners, or beneficiaries when it provides the Form W-9 to another flow-through entity in which it has an ownership interest.

Purpose of Form

An individual or entity (Form W-9 requester) who is required to file an information return with the IRS is giving you this form because they

City of Pompano Beach

RLI26-004 CONTINUING CONTRACT FOR PROFESSIONAL ENVIRONMENTAL TESTING

Position Classification & Maximum Hourly Labor Rate Schedule

Prime /Firm Name	UES Professional Solutions, LLC
-------------------------	---------------------------------

Position / Classification	Maximum Hourly Rate (\$)
Principal-In-Charge	\$300.00
Project Manager	\$160.00
Senior Geologist/Engineer	\$185.00
Geologist/Engineer/Environmental Scientist	\$135.00
Biologist	\$125.00
Wetlands Specialist	\$125.00
Threatened, Endangered, Species Specialist	\$150.00
Florida Licesensed Asbestos Consultant	\$185.00
Asbestos Inspector - AHERA Certified	\$125.00
Technical Writer	\$95.00
CAD Technician	\$75.00
Office Administration	\$75.00

