

EXHIBIT 2

Project:
Pompano Underwater Sculpture
Garden

Proposal, Budget, and Design

Client:
Cultural Affairs Attn.
Laura Atria
50 West Atlantic Blvd.
Pompano Beach; Florida
33060

Art Team:
Velvet Anvil
611 Old Fort Rd
Asheville; NC
28730

<http://www.thevelvetanvil.com>



A handwritten signature in black ink, appearing to be 'Atria' or similar, written in a cursive style.

Seahorse Significance for Pompano

Proposal: Creating a Large Seahorse Sculpture for Pompano Beach

Introduction: Pompano Beach, Florida, boasts a rich history deeply intertwined with its marine life. Among the fascinating creatures that inhabit its coastal waters, the seahorse holds a special significance. These enchanting creatures have long captured the imagination of locals and visitors alike, symbolizing the unique marine biodiversity of the area. To celebrate this rich heritage and enhance the city's cultural landscape, we propose the creation of a large seahorse sculpture to be prominently displayed in Pompano Beach.

Historical Significance of Seahorses in Pompano Beach: Seahorses have played a vital role in the ecosystem of Pompano Beach for centuries. The warm waters of the Atlantic Ocean provide an ideal habitat for these unique creatures, and Pompano Beach's position along the Florida coast has made it a hotspot for seahorse sightings. Furthermore, seahorses have been an integral part of local folklore, with indigenous communities often incorporating them into their myths and legends.

Moreover, Pompano Beach has a rich maritime history, with seafaring traditions dating back to its early settlement. Seahorses have been a symbol of resilience and adaptability, mirroring the characteristics of the residents who have built their lives around the sea. Their presence in the area serves as a reminder of the delicate balance between human activity and the natural environment.

Proposed Sculpture: The proposed seahorse sculpture will serve as a monumental tribute to the rich history and biodiversity of Pompano Beach. Crafted by a skilled artist, the sculpture will stand as a symbol of the city's connection to the sea and its commitment to preserving its natural heritage. The sculpture will be large in scale, capturing the majestic beauty of the seahorse and serving as a focal point for locals and tourists alike.

The design of the sculpture will incorporate elements of local marine life and indigenous art, paying homage to the cultural diversity of the region. It will be crafted using durable materials suitable for outdoor display, ensuring its longevity for generations to come. Additionally, the sculpture will be strategically located in a prominent area of Pompano Beach, allowing residents and visitors to admire its beauty and reflect on the city's rich history.

Benefits of the Sculpture: The installation of a large seahorse sculpture in Pompano Beach will yield numerous benefits for the community:

- 1. Cultural Enrichment:** The sculpture will serve as a cultural landmark, promoting a deeper appreciation for the history and heritage of Pompano Beach among residents and visitors.
- 2. Tourism Promotion:** The iconic nature of the sculpture will attract tourists to Pompano Beach, boosting local businesses and stimulating economic growth.
- 3. Environmental Awareness:** By highlighting the significance of seahorses in the local ecosystem, the sculpture will raise awareness about marine conservation efforts and the importance of preserving coastal habitats.
- 4. Community Engagement:** The creation of the sculpture will provide an opportunity for community involvement, with residents contributing ideas and support for the project.

Conclusion: In conclusion, the creation of a large seahorse sculpture for Pompano Beach represents a unique opportunity to celebrate the city's rich history and natural

beauty. By honoring the legacy of these enchanting creatures, we can foster a greater sense of pride and stewardship among residents while inviting visitors to experience the magic of Pompano Beach's coastal charm. We believe that this project will leave a lasting legacy for generations to come, solidifying Pompano Beach's reputation as a vibrant and culturally significant destination along Florida's coastline.

Scope of project:

This document is a full comprehensive write-up for the proposal, budget, design, and installation of the underwater sculpture garden for the Pompano Beach public art submission. My team and I have a concept design of a 6' tall by roughly 3' wide and 3' in-depth 3D seahorse puzzle. This puzzle will be made of 3/8" steel panels. These panels have been designed and molded to cut out using a process called water jet cutting. The puzzle pieces interlock with one another. Creating a very rigid and structural sculpture. Once connected into place the 3D seahorse will be welded at multiple interlocking points to secure each connection. Once fabrication is completed on the puzzle, the additional mounting bracket will be welded to the bottom. After the piece is fully fabricated. The entirety of the sculpture will be sanded and sandblasted to remove burrs and other debris. Allowing for smooth surfaces and edges to avoid sharp spots. Upon completion of the fabrication and cleaning of the seahorse sculpture. We will palletize the piece and prepare it for transport. The piece will be transported via U-haul from Asheville N.C. to Pompano Beach. Installation should take 2-3 days at most, post transport. Requiring accommodations portrayed in the budget for my team and myself. After completion of installation at the specified location. My team is comprised of 2 folks. Josh Wilson (Artist, Sculptor, Designer, 3D modeling technician, and worker) and myself. Drew Shook (owner and operator of Velvet Anvil, Artist, Sculptor, Designer, Welder, Diver, Heavy Machine Operator, and Worker). I will also have my professional Photographer join the installation. They will also take photos of the build process that you can use for your documentation and all other needs—publication or otherwise.

Budget Breakdown:

3D Modeling and design time -	\$4,370.00
Material and Water Jet Cutting -	\$5,203.00
U- Haul -	\$ 637.00
Accommodations for the crew of 3 in Pompano -	\$1,605.00
Flights for crew - Josh Wilson (Portland; Organ)	\$1,088.00
- Drew Shook (Asheville; NC)	\$438.00
- Jacqueline Franquez. (Asheville; NC)	\$438.00
Wood for palletizing -	\$220.00
Strapping and Rigging -	\$261.00
Installation Labor & Photography	\$3,000.00
(Labor / Photography breakdown: Time split between photography and extra labor For shop and installation at \$50.00 an hour at 60 hours = \$3,000.00)	
Drew Shook Labor	\$12,775.00
(This rate covers all aspects of Design, Communications, Shop time, Fabrication Labor, All other labor, Heavy Machine Rental and operation, Rigging, Management, Acquisitions, and Organization of the entire project for project management. In addition to Drive and transport time, and Installation time. At an hourly rate of \$120.00 an hour at 106 hours over roughly 14-16 Days = \$12,775.00)	
Total:	\$30,036.00

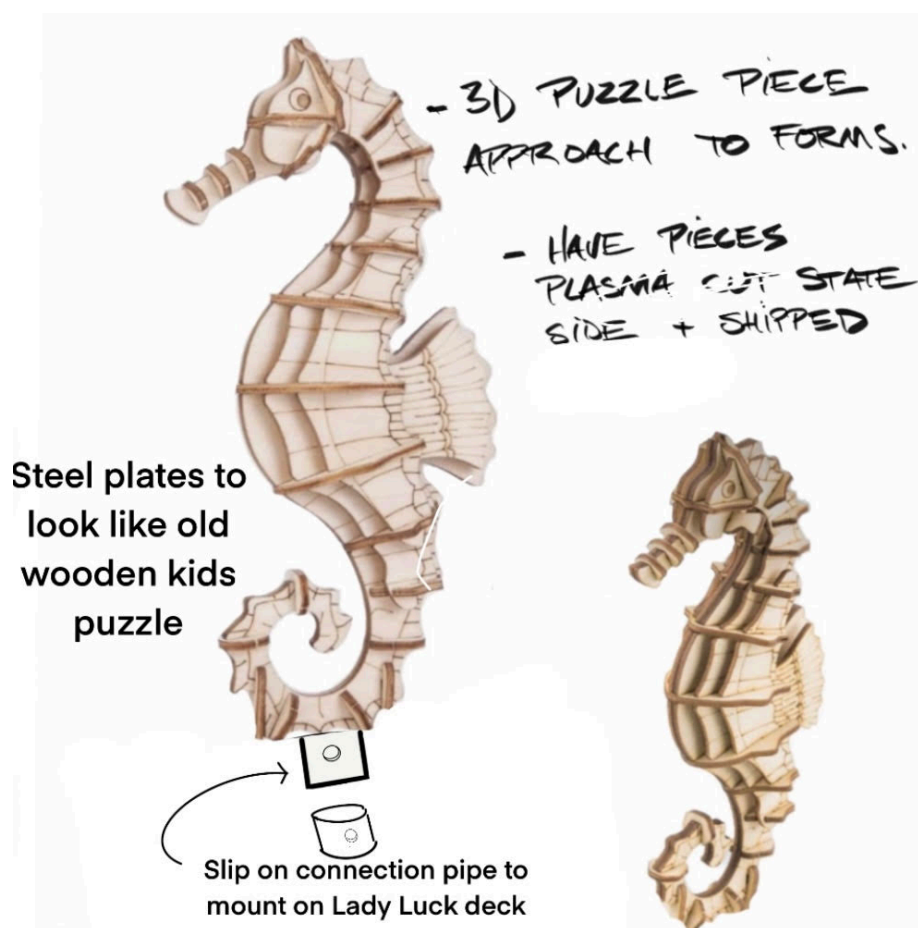
*Note. A 10% contingency line item for any unforeseen cost will be needed.
(10% of \$30,036.00 = \$3,003.60)

Project Total with 10% contingency: \$33,039.60

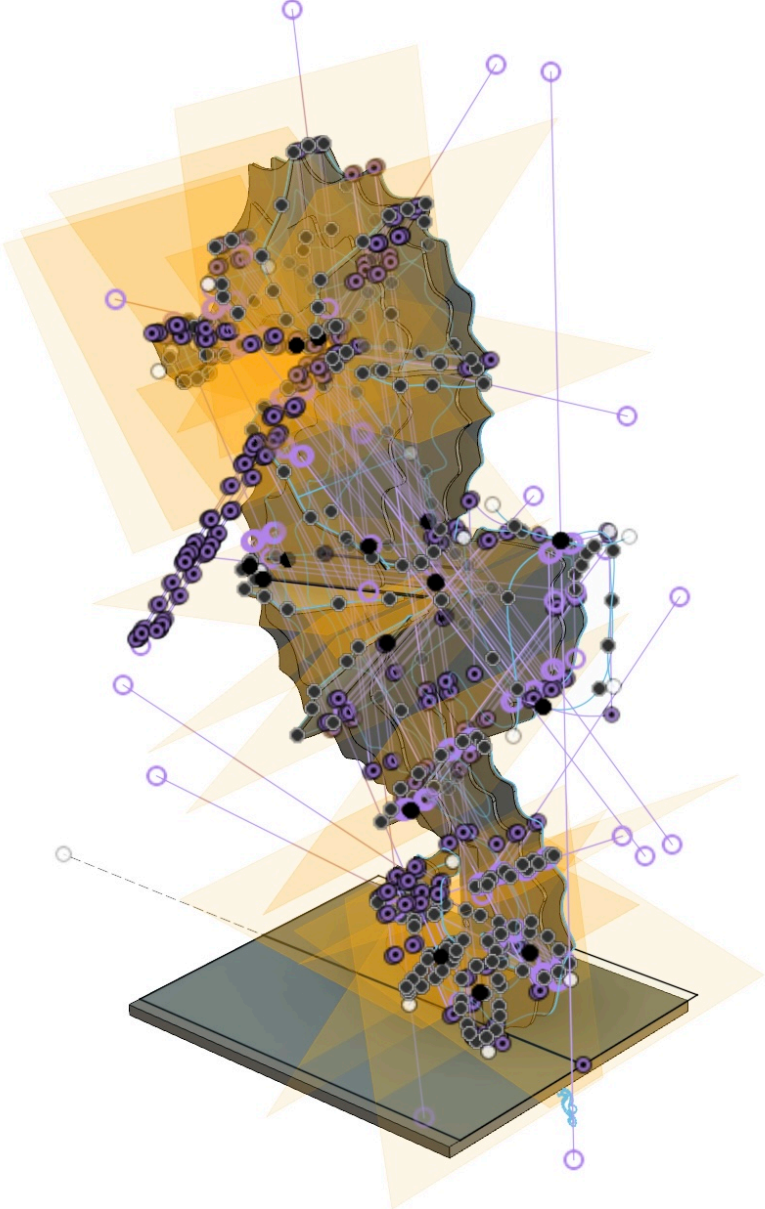
Design: Seahorse

The design of the seahorse is based on the 3D wooden puzzles almost everyone has used hopefully at some time in their life. After many hours and weeks of modifications we have designed and 3D molded the renderings below for the underwater sculpture garden submission to grace the deck of the Lady Luck ship. The seahorse is made entirely of 3/8" steel with interconnecting slots that allow all intersecting pieces to web together. Creating hundreds of voids and negative spaces for marine life to grow and swim through. As well as beautiful light leaks and shadows. After the pieces are cut at the water jet cutting facility. They will be picked up and transported to the shop. Where they will then undergo the long but fun orchestration of being cleaned and put together. Once fully fabricated, welded, sanded, and sandblasted to remove any burrs or debris by the team. The piece will be palletized and prepped for transport to Pompano Beach; Florida. Where we will install the seahorse sculpture at the desired location. Attached are files and renderings of the design and cutting procedure layout. Along with some renderings of how it will look in water as well as on land. There is one element that I would like to add but only with the councils' permission. It is a saddle and reins for photo ops on land for parents to hold their kids up for a photo. As well as when it is scuttled down to the Lady Luck deck for divers to sit on the saddle for an underwater photo op.

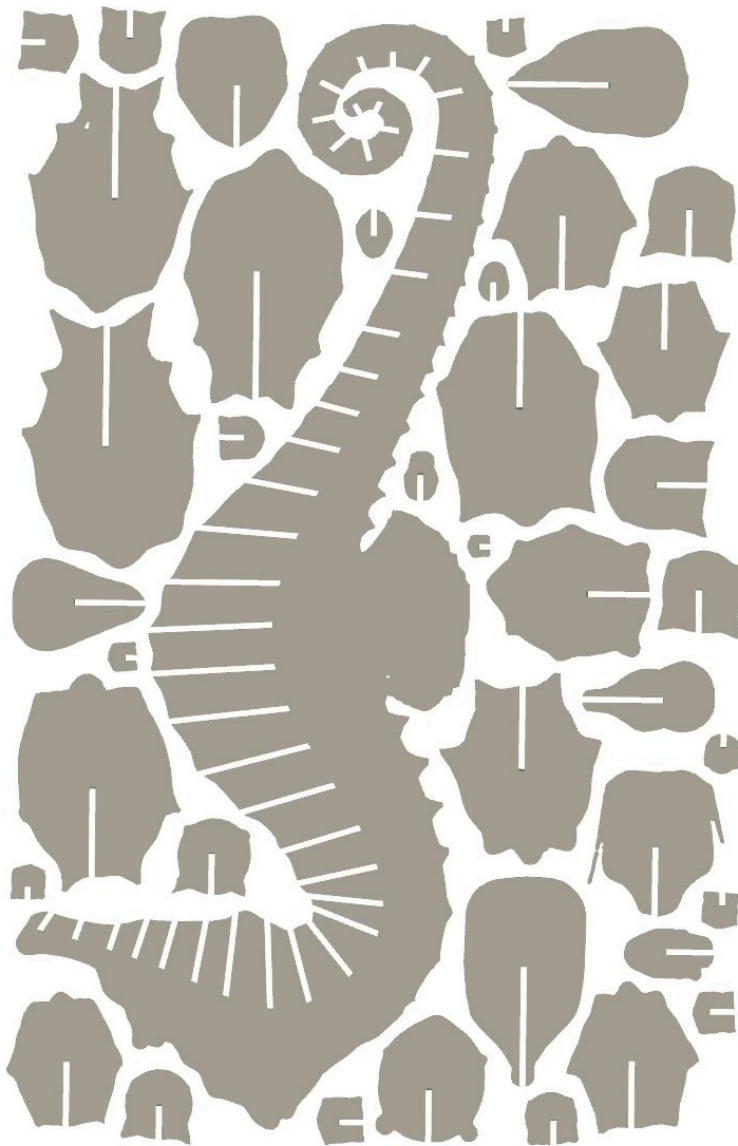
-Here we have the original concept idea. Which we have expanded on for the steel version.



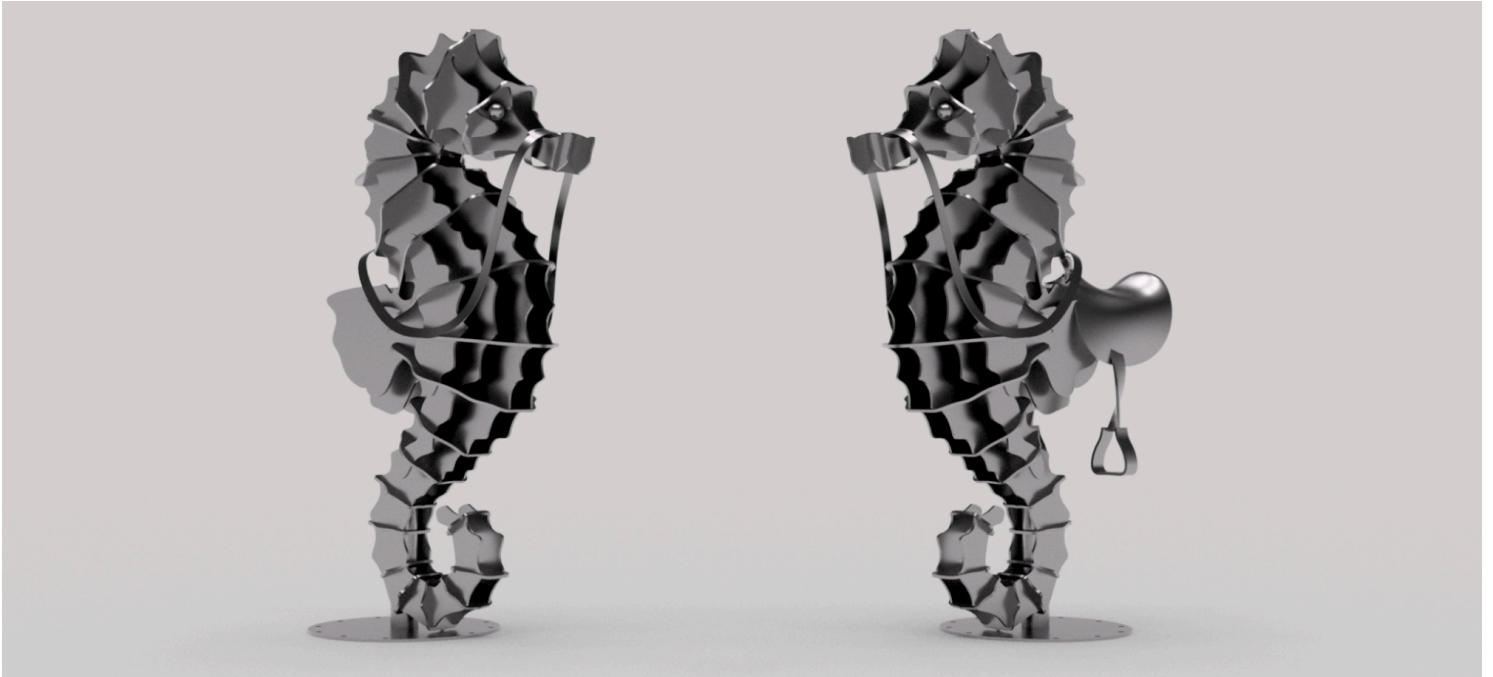
- Here we have a view at our molding process showing intersecting planes



- Here we have one of 6 of the layouts for the water jet-cutting process.



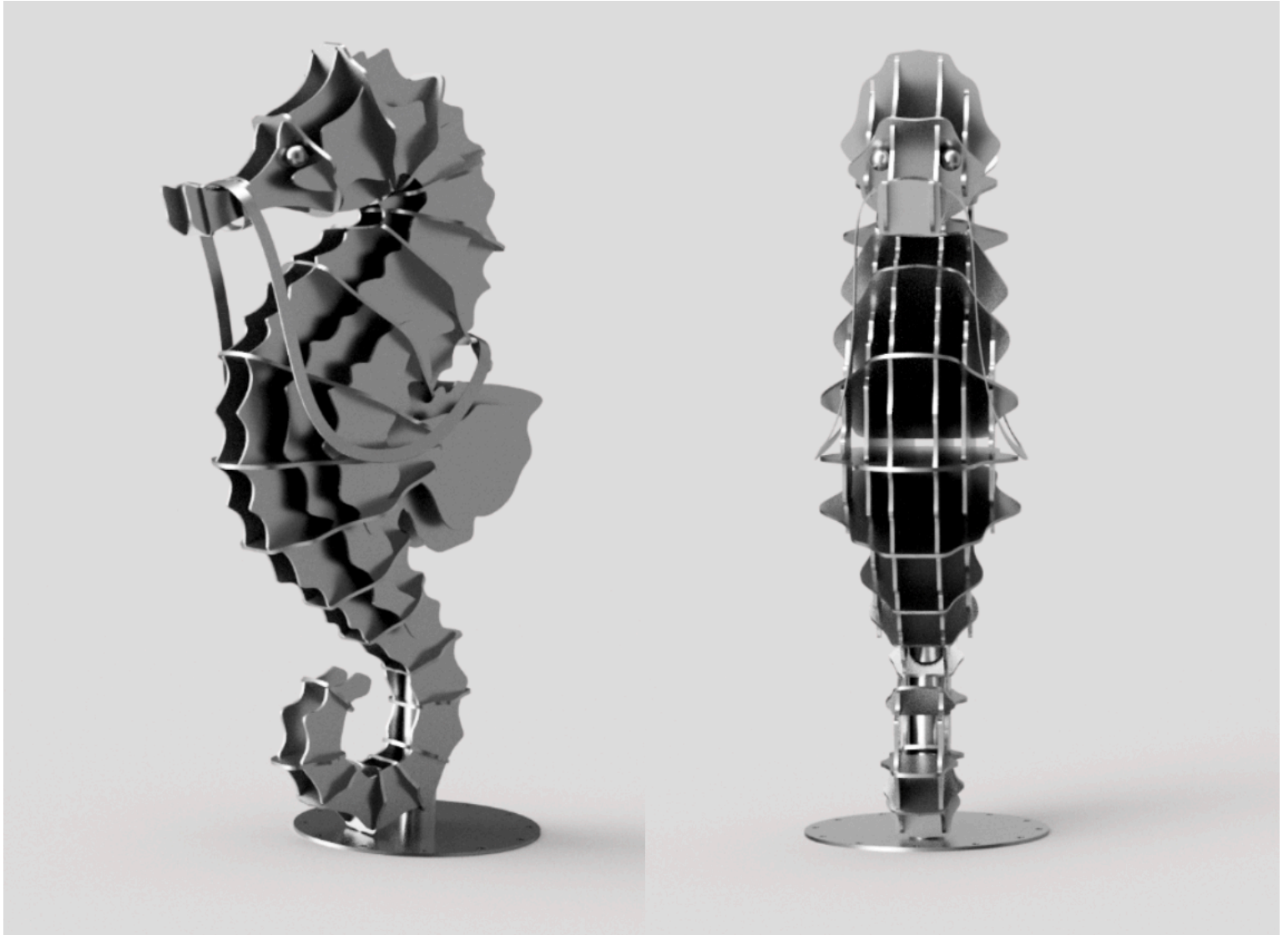
- Here we have the final design. One without the saddle concept and one with the saddle concept.



- Here we have a version with a child sitting on the saddle for a photo op. If the saddle version is chosen we'll need to consider adding leather, plastic, or some other barrier from the heat generated on the saddle from the sun.



- Here we have our final design at 6' tall x 2' 6" wide. With two versions of mounting included. One for land with a circular plate to mount to concrete and another with the 3 1/2" pipe connection on the boat.



- The molding thus far shows about 60-plus hours.

This concludes the proposal, breakdown of budget, and design. Along with details of the build and installation. I do have questions about the installation process and budget payment planning moving forward. Please contact me at any time to discuss any aspects of this proposal.

Thank you

Drew Shook of Velvet Anvil
<http://www.thevelvetanvil.com>

- The remaining image is that of a parts list. Every aspect of the seahorse can be easily converted to fit any changes that the council/art department may want if needed at the click of a button. That includes material thickness, weight, styling, etc. We are excited to work with all crews and departments involved to make this work for everyone in Pompano Beach. So plenty of wiggle room to reach the end goal.

PARTS LIST			
ITEM	QTY	PART NUMBER	MATERIAL
1	1	COMPONENT2	STEEL
2	1	COMPONENT3	STEEL
3	1	COMPONENT4	STEEL
4	1	COMPONENT5	STEEL
5	1	COMPONENT6	STEEL
6	1	COMPONENT7	STEEL
7	1	COMPONENT8	STEEL
8	1	COMPONENT9	STEEL
9	1	COMPONENT10	STEEL
10	1	COMPONENT11	STEEL
11	1	COMPONENT12	STEEL
12	1	COMPONENT13	STEEL
13	1	COMPONENT14	STEEL
14	1	COMPONENT15	STEEL
15	1	COMPONENT16	STEEL
16	1	COMPONENT17	STEEL
17	1	COMPONENT18	STEEL
18	1	COMPONENT19	STEEL
19	1	COMPONENT20	STEEL
20	1	COMPONENT21	STEEL
21	1	COMPONENT22	STEEL
22	1	COMPONENT23	STEEL
23	1	COMPONENT24	STEEL
24	1	COMPONENT25	STEEL
25	1	COMPONENT26	STEEL
26	1	COMPONENT27	STEEL
27	1	COMPONENT28	STEEL
28	1	COMPONENT29	STEEL
29	1	COMPONENT30	STEEL
30	1	COMPONENT31	STEEL
31	1	COMPONENT32	STEEL
32	1	COMPONENT33	STEEL
33	1	COMPONENT34	STEEL
34	1	COMPONENT35	STEEL
35	1	COMPONENT36	STEEL
36	1	COMPONENT37	STEEL
37	1	COMPONENT38	STEEL
38	1	COMPONENT39	STEEL
39	1	COMPONENT40	STEEL

General	Material Name	Steel
Physical	Mass	16184.947 ouncemass
	Volume	3566.861 in^3
	Density	4.538 ouncemass / in^3
	Area	17467.168 in^2
	World X,Y,Z	0.00 in, 0.00 in, 0.00 in
	Center of Mass	11.701 in, 43.753 in, -2.001 in
	Bounding Box	
	Length	53.628 in
	Width	75.331 in
	Height	24.00 in

PROJECT		Seahorse Sink	
TITLE		Document SH	
APPROVED	SIZE	CODE	DWG NO
CHECKED	B		
DRAWN	Joshua Wilson	3/11/2024	SCALE 1:16
		WEIGHT 1011.56 lbs	SHEET 1/6

