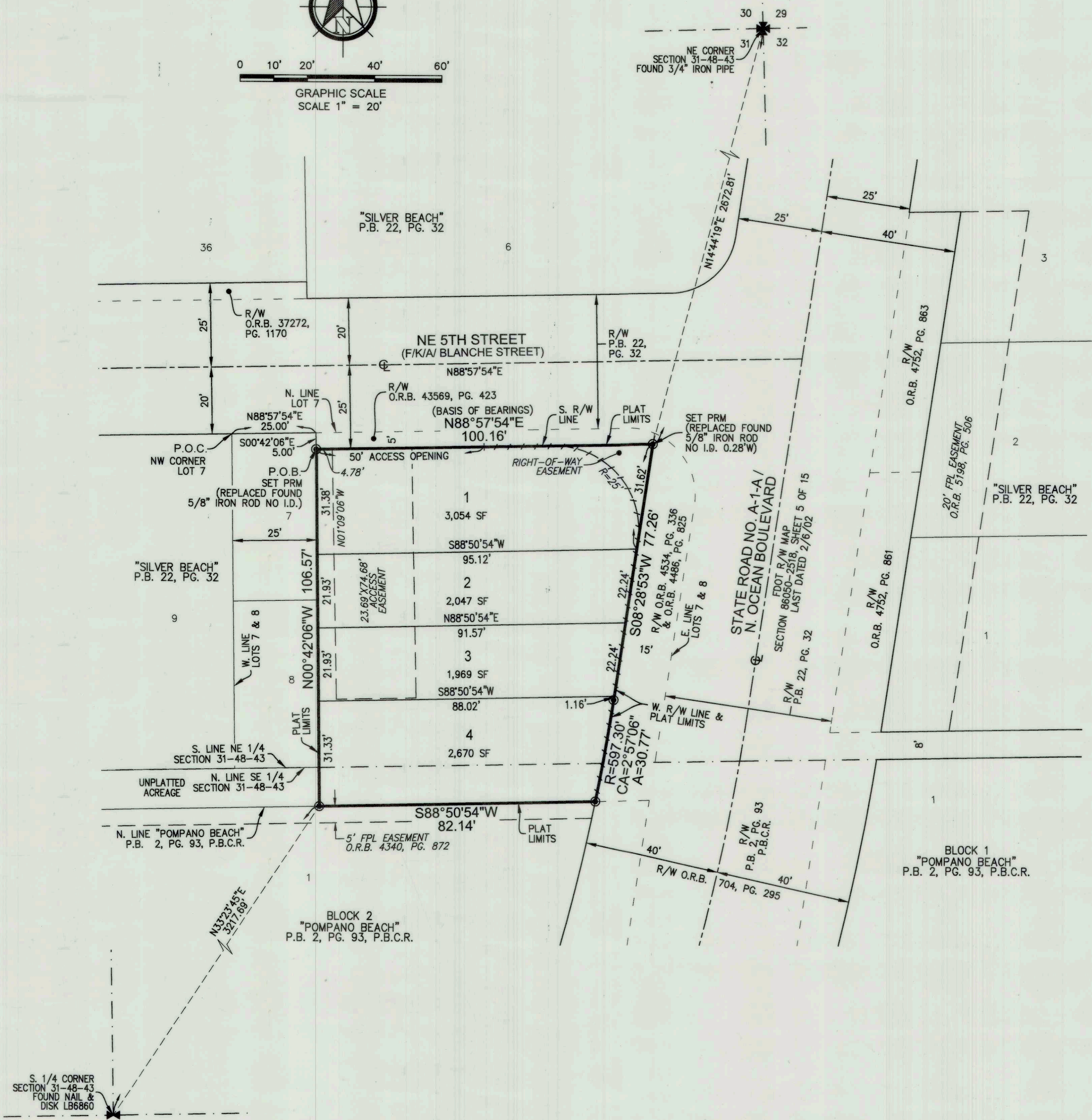
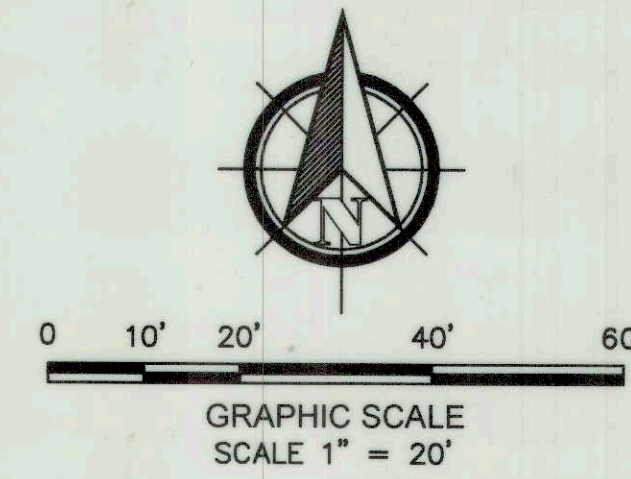


LEASE FLORIDA

A REPLAT OF PORTION OF LOTS 7 AND 8, "SILVER BEACH" (P.B. 22, PG. 32, B.C.R.) AND A PORTION OF THE UNPLATTED HIATUS LYING ADJACENT THERETO, ALL IN SECTION 31, TOWNSHIP 48 SOUTH, RANGE 43 EAST, CITY OF POMPANO BEACH, BROWARD COUNTY, FLORIDA

PREPARED BY
PULICE LAND SURVEYORS, INC.
5381 NOB HILL ROAD
SUNRISE, FLORIDA 33351
954-572-1777
FAX NO. 954-572-1778



SURVEYOR'S NOTES:

- THIS PLAT IS RESTRICTED TO 4 TOWNHOUSE UNITS.

THIS NOTE IS REQUIRED BY CHAPTER 5, ARTICLE IX, BROWARD COUNTY CODE OF ORDINANCES, AND MAY BE AMENDED BY APPROVAL OF THE BROWARD COUNTY BOARD OF COUNTY COMMISSIONERS. THE NOTATION AND ANY AMENDMENTS THERETO ARE SOLELY INDICATING THE APPROVED DEVELOPMENT LEVEL FOR PROPERTY LOCATED WITHIN THE PLAT AND DO NOT OPERATE AS A RESTRICTION IN FAVOR OF ANY PROPERTY OWNER INCLUDING AN OWNER OR OWNERS OF PROPERTY WITHIN THIS PLAT WHO TOOK TITLE TO THE PROPERTY WITH REFERENCE TO THIS PLAT.
- ANY STRUCTURE WITHIN THIS PLAT MUST COMPLY WITH SECTION 2.1.f., DEVELOPMENT REVIEW REQUIREMENTS, OF THE BROWARD COUNTY LAND USE PLAN, REGARDING HAZARDS TO AIR NAVIGATION.
- BEARINGS ARE RELATIVE TO NATIONAL OCEAN SURVEY, TRANSVERSE MERCATOR COORDINATES, FLORIDA EAST ZONE, NORTH AMERICAN DATUM (NAD) OF 1983 (1990 ADJUSTMENT), WITH THE SOUTH RIGHT-OF-WAY LINE OF NE 5TH STREET BEING N88°57'54"E AS SHOWN ON THE FOOT RIGHT-OF-WAY MAP FOR SECTION 86050-2518 LAST DATED 2/6/02.
- ALL RECORDED DOCUMENTS DEPICTED HEREON ARE RECORDED IN THE PUBLIC RECORDS OF BROWARD COUNTY UNLESS OTHERWISE NOTED.
- NOTICE: THIS PLAT, AS RECORDED IN ITS GRAPHIC FORM, IS THE OFFICIAL DEPICTION OF THE SUBDIVIDED LANDS DESCRIBED HEREIN AND WILL IN NO CIRCUMSTANCES BE SUPPLANTED IN AUTHORITY BY ANY OTHER GRAPHIC OR DIGITAL FORM OF THE PLAT. THERE MAY BE ADDITIONAL RESTRICTIONS THAT ARE NOT RECORDED ON THIS PLAT THAT MAY BE FOUND IN THE PUBLIC RECORDS OF THIS COUNTY.
- THE FOLLOWING NOTE IS REQUIRED BY THE BROWARD COUNTY SURVEYOR PURSUANT TO CHAPTER 177.091, SUBSECTION (2B), FLORIDA STATUTES. PLATTED UTILITY EASEMENTS ARE ALSO EASEMENTS FOR THE CONSTRUCTION, INSTALLATION, MAINTENANCE, AND OPERATION OF CABLE TELEVISION SERVICES; PROVIDED, HOWEVER, NO SUCH CONSTRUCTION, INSTALLATION, MAINTENANCE, AND OPERATION OF CABLE TELEVISION SERVICES SHALL INTERFERE WITH THE FACILITIES AND SERVICES OF AN ELECTRIC, TELEPHONE, GAS, OR OTHER PUBLIC UTILITY. IN THE EVENT A CABLE TELEVISION COMPANY DAMAGES THE FACILITIES OF A PUBLIC UTILITY, IT SHALL BE SOLELY RESPONSIBLE FOR THE DAMAGES. THIS NOTE DOES NOT APPLY TO PRIVATE EASEMENTS GRANTED TO OR OBTAINED BY A PARTICULAR ELECTRIC, TELEPHONE, GAS, OR OTHER PUBLIC UTILITY. SUCH CONSTRUCTION, INSTALLATION, MAINTENANCE, AND OPERATION SHALL COMPLY WITH THE NATIONAL ELECTRIC SAFETY CODE AS ADOPTED BY THE FLORIDA PUBLIC SERVICE COMMISSION.
- ALL FACILITIES FOR THE DISTRIBUTION OF ELECTRICITY, TELEPHONE AND CABLE SHALL BE INSTALLED UNDERGROUND.

LEGEND AND ABBREVIATIONS:

- ⊙ = P.R.M. (SET 4"x4"x24" CONCRETE MONUMENT WITH 2" ALUMINUM DISC STAMPED "PRM LB 3870" UNLESS OTHERWISE NOTED)
- ⊕ = CENTERLINE
- = NON-VEHICULAR ACCESS LINE
- B.C.R. = BROWARD COUNTY RECORDS
- FDOT = FLORIDA DEPARTMENT OF TRANSPORTATION
- FPL = FLORIDA POWER & LIGHT COMPANY
- I.D. = IDENTIFICATION
- LB = LICENSED BUSINESS
- M.M.B. = MISCELLANEOUS MAP BOOK
- O.R.B. = OFFICIAL RECORDS BOOK
- P.B. = PLAT BOOK
- P.B.C.R. = PALM BEACH COUNTY RECORDS
- PG. = PAGE
- P.O.B. = POINT OF BEGINNING
- P.O.C. = POINT OF COMMENCEMENT
- PRM = PERMANENT REFERENCE MONUMENT
- R/W = RIGHT-OF-WAY
- SF = SQUARE FEET