

**AMENDMENT NUMBER ONE (1)
STATE OF FLORIDA DEPARTMENT OF TRANSPORTATION, DISTRICT FOUR (4)
MAINTENANCE MEMORANDUM OF AGREEMENT (MMOA)**

THIS AMENDMENT Number One (1) to the Maintenance Memorandum of Agreement (MMOA), Permit No. 2020-C-491-00008 entered into by the parties and dated 11/24/2021, hereafter referred to as the "Agreement". This Amendment is made and entered into on _____ by and between the **STATE OF FLORIDA DEPARTMENT OF TRANSPORTATION** hereinafter called the **DEPARTMENT** and the **CITY OF POMPANO BEACH**, a municipal corporation existing under the Laws of Florida, hereinafter called the **AGENCY**.

WITNESSETH

WHEREAS, the parties entered into the Agreement for the purpose of the **AGENCY** maintaining the specific elements constructed under **PERMIT NO. 2020-C-491-00008** as well as all the existing light poles on the associated meter to include but no limited to decorative light poles, standard light poles with decorative fixtures and attachments, mounting hardware and electrical components installed on the **DEPARTMENT'S** right of way; and

WHEREAS, the **AGENCY** intends to remove existing lighting and install additional, standard and decorative lighting in the **DEPARTMENT'S** right of way along a portion of SR 7 under **PERMIT # 2022-C-491-00003**.

WHEREAS, the parties herein agree that the **AGENCY** shall maintain all roadway lighting hereinafter referred as "**IMPROVEMENTS**" within the **DEPARTMENT'S** right of way within limits along SR 845 from Mile Post (M.P.) 6.783 to M.P. 7.195, in accordance with the terms and conditions of the Agreement, as described in the **Exhibit A** attached to this Amendment and hereby incorporated into the Agreement; and

WHEREAS, the **AGENCY** by Resolution No. _____ dated _____, attached hereto and by this reference made a part hereof, desires to enter into this Amendment and authorized its officers to do so.

NOW THEREFORE, for and in consideration of mutual benefits that flow each to the other, the parties covenant and agree as follows:

1. **Exhibit "A"** of the Agreement dated 11/24/2021, shall be amended to include the additional areas as follows: SR 845, section 86065801, from W. Atlantic Blvd., M.P. 6.783 to North of Palm Aire Drive, M.P. 7.195, as set forth in **Exhibit A** attached to this Amendment.
2. The **AGENCY** shall construct additional **IMPROVEMENTS** along SR 845 from M.P. 6.783 to M.P. 7.195, as set forth in **Exhibit A** in accordance with the plans attached hereto as **Exhibit B**.
3. The **AGENCY** agrees to maintain the additional **IMPROVEMENTS** in accordance with

the terms and conditions of the **AGREEMENT**.

4. Except as modified by this Amendment, all terms, and conditions of the **AGREEMENT** and all Amendments thereto shall remain in full force and effect.
5. **LIST OF EXHIBITS**

Exhibit A – Project location, description, and aerial image

Exhibit B – Project Plans

[The remainder of this page intentionally left blank]

SECTION No.: 86065801
S.R. No.: SR-845
FM No.: 2022-C-491-00003
COUNTY: BROWARD

IN WITNESS OF THE FOREGOING, the parties have set their hands and seals the day and year first above written.

CITY OF POMPANO BEACH

By: _____
Chairperson/Mayor/Manager

Date: _____

Attest: _____ (SEAL)
Clerk

Legal Approval

Attorney

Date

[The remainder of this page intentionally left blank]

SECTION No.: 86065801
S.R. No.: SR-845
FM No.: 2022-C-491-00003
COUNTY: BROWARD

IN WITNESS OF THE FOREGOING, the parties have set their hands and seals the day and year first above written.

DEPARTMENT:

STATE OF FLORIDA
DEPARTMENT OF TRANSPORTATION

Sign: _____
Paul A. Lampley
Director of Operations

Approval as to Form:

Sign: _____
Francine Steelman
Assistant General Counsel

[The remainder of this page intentionally left blank]

EXHIBIT A

PROJECT LOCATION, DESCRIPTION, AND AERIAL IMAGE

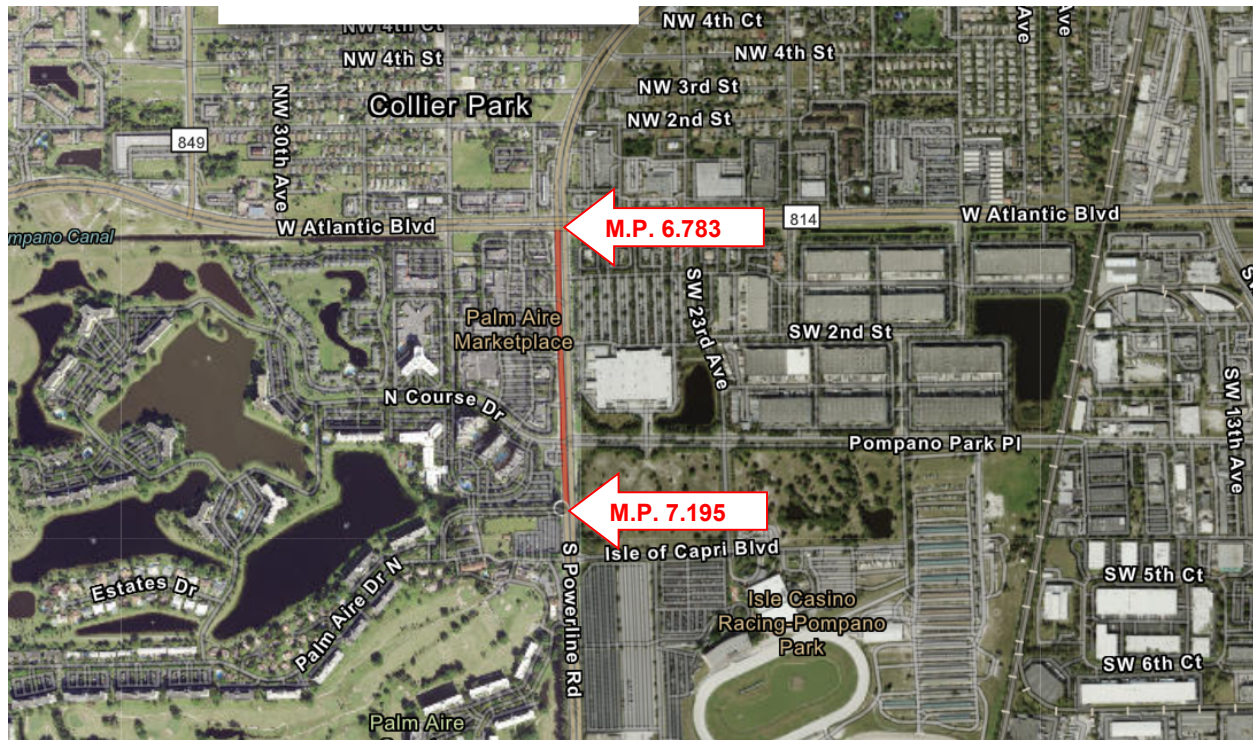
I. Location of additional IMPROVEMENTS:

The additional **IMPROVEMENTS** associated with this Amendment are within the **DEPARTMENT's** right-of-way, within limits of the Broward, Florida, along SR 845, section 86065801, from W. Atlantic Blvd., M.P. 6.783 to North of Palm Aire Drive, M.P. 7.195.

II. Description of Work:

The proposed project consists of installation of conventional roadway lighting.

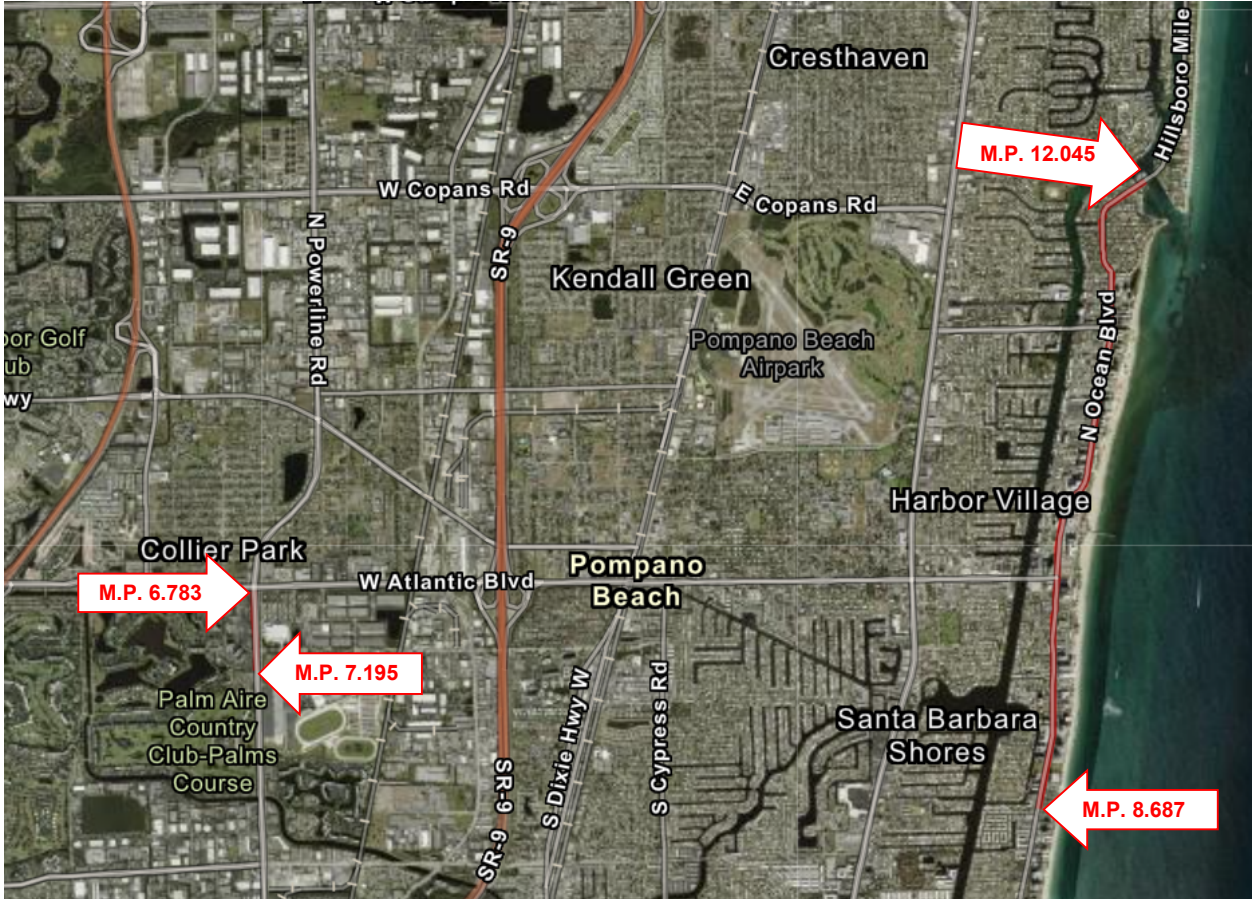
III. Aerial Image:



SECTION No.: 86065801
S.R. No.: SR-845
FM No.: 2022-C-491-00003
COUNTY: BROWARD

IV. Entire limits of IMPROVEMENTS

The entire limits of the **IMPROVEMENTS** shall be maintained by the **AGENCY** are within the **DEPARTMENT's** right-of-way, within the City of Pompano Beach in Broward County, Florida, at SR A1A section 86050000 from M.P. 8.687 to MP 12.045 and SR 845, section 86065801, M.P. 6.783 to M.P. 7.195.



SECTION No.: 86065801
S.R. No.: SR-845
FM No.: 2022-C-491-00003
COUNTY: BROWARD

EXHIBIT B

Pompano Park Live, Contract Plans, Roadway Plans, prepared by Anthony V. Alfred, P.E., Kimley-Horn and Associates, INC., dated April 2, 2023, as approved by the **DEPARTMENT**.

Construction Plans (attached)

Sheets included:

PDF Page Number (#)	Plan Sheet (#)	Sheet Description
8	1	KEY SHEET
9	6	GENERAL NOTES
10	L-6	LIGHTING PLAN

[The remainder of this page intentionally left blank]

CONTRACT PLANS COMPONENTS

ROADWAY PLANS

INDEX OF ROADWAY PLANS

SHEET NO.	SHEET DESCRIPTION
ROADWAY	
1	KEY SHEET
2	SIGNATURE SHEET
3 - 6	GENERAL NOTES
7 - 11	TYPICAL SECTIONS
12	PROJECT LAYOUT
13 - 27	ROADWAY PLAN
28 - 33	SPECIAL PROFILES
34 - 35	DRAINAGE STRUCTURES
36 - 53	CROSS SECTIONS
54	CONCRETE PAVT. WIDENING PLAN & DETAILS
SQ-1 - SQ-3	SUMMARY OF QUANTITIES
SIGNING AND PAVEMENT MARKING	
S-1 - S-15	SIGNING AND PAVEMENT MARKING PLAN
S-16 - S-17	GUIDE SIGN WORK SHEET
S-18	OVERHEAD SIGN CROSS SECTION
S-19	SPECIAL DETAILS
S-20	STANDARD OVERHEAD CANTILEVER DATA TABLE
SIGNALIZATION	
T-1 - T-6	SIGNALIZATION PLAN
T-7	GUIDE SIGN WORK SHEET
T-8	MAST ARM TABULATION
T-9	STANDARD MAST ARM ASSEMBLY DATA TABLE
T-10	SPECIAL MAST ARM ASSEMBLY DATA TABLE
T-11	MISCELLANEOUS DETAILS
T-12	ELECTRICAL POWER/SERVICE DETAIL
T-13	CONTROLLER CABINET INSTALLATION DETAIL
T-14	VERTICAL SIGNAL HEAD MOUNTING DETAIL
LIGHTING	
L-1 - L-3	LIGHTING PLAN
*GR-1	ROADWAY SOIL SURVEY
*GR-2 - GR-3	SOIL PROFILE
*GR-4 - GR-8	REPORT OF CORE BORINGS
*UTV-1 - UTV-3	VERIFIED UTILITY LOCATE

*These sheets are included in the Index of Roadway Plans only to indicate that it is part of the Roadway Plans. These sheets are contained in a separate digitally signed and sealed document.

GOVERNING DESIGN STANDARDS:

Florida Department of Transportation, FY2022-23 Standard Plans for Road and Bridge Construction and applicable Interim Revisions (IRs).

Standard Plans for Road Construction and IRs are available at the following website: <http://www.fdot.gov/design/standardplans>

Manual on Uniform Traffic Control Devices (2009)

Manual of Uniform Minimum Standards for Design, Construction and Maintenance for Streets and Highways "Florida Greenbook" 2018 Edition.

GOVERNING STANDARD SPECIFICATIONS:

Florida Department of Transportation, January 2023 Standard Specifications for Road and Bridge Construction at the following website: <http://www.dot.state.fl.us/programmanagement/Implemented/SpcBooks>

POMPANO PARK LIVE!

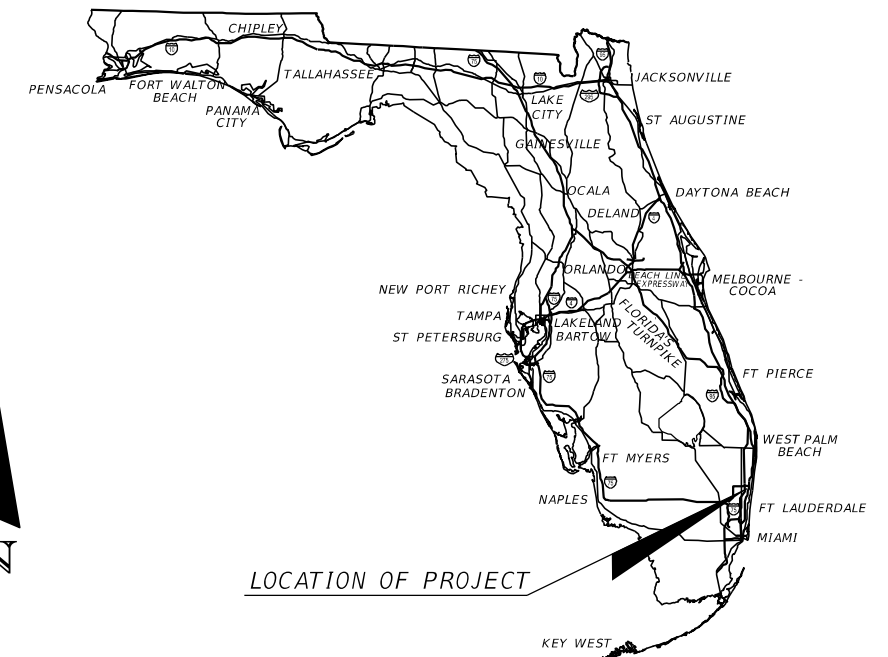
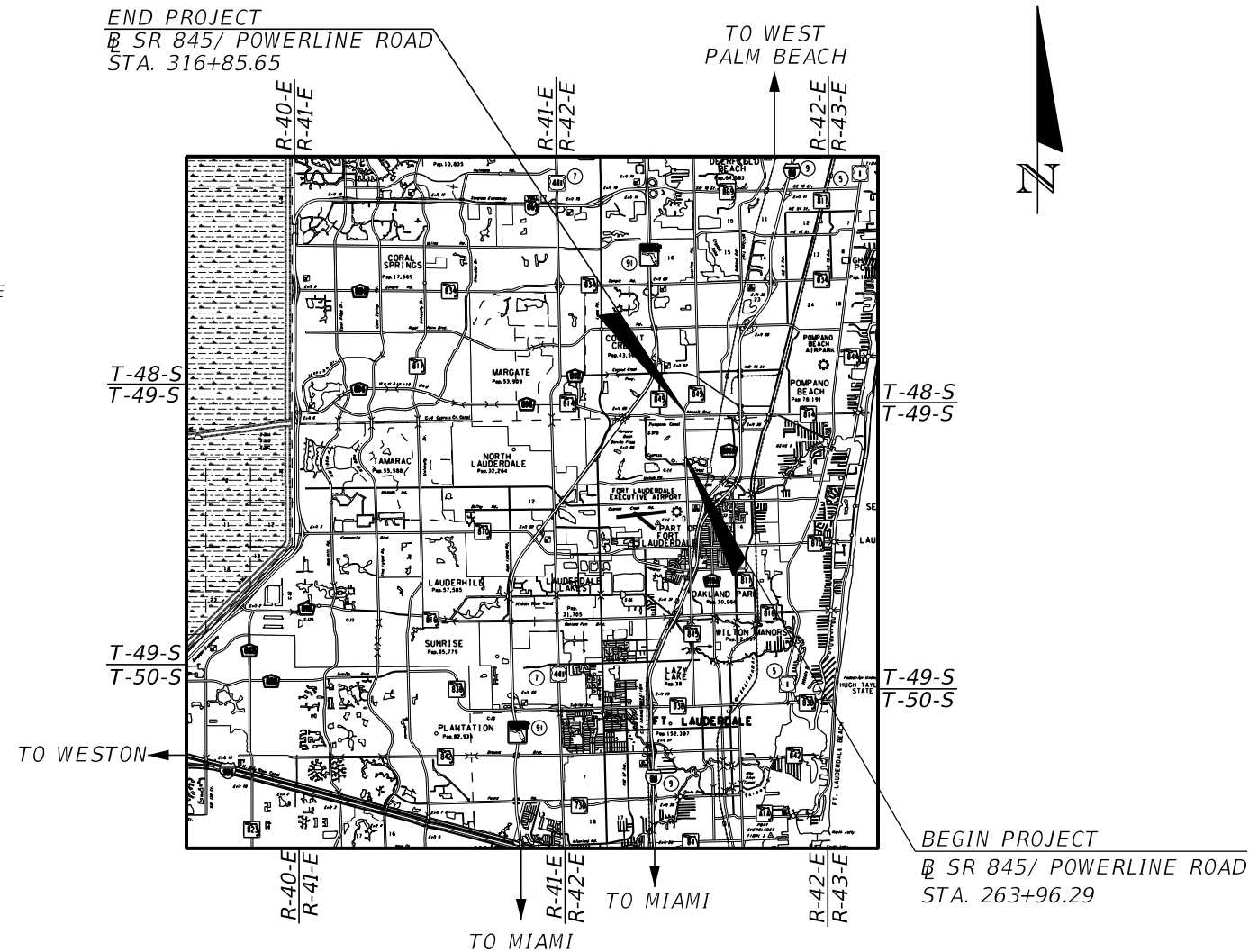
CONTRACT PLANS

ROADWAY PLANS

BROWARD COUNTY

SR 845 / POWERLINE ROAD

FROM NORTH OF PALM AIRE DRIVE TO NORTH OF W. ATLANTIC BLVD



LOCATION OF PROJECT

ROADWAY PLANS ENGINEER OF RECORD:

ANTHONY V. ALFRED, P.E.
 P.E. NO.: 51857
 KIMLEY-HORN AND ASSOCIATES, INC.
 355 ALHAMBRA CIRCLE, SUITE 1400
 MIAMI, FLORIDA 33134
 (305) 673-2025

PREPARED FOR: POMPANO PARK JV LAND HOLDINGS, LLC

Live!

POMPANO RESORTS

CONSTRUCTION CONTRACT NO.	FISCAL YEAR	SHEET NO.
TBD	23	1

LIGHTING GENERAL NOTES


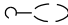
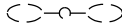
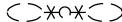
GENERAL NOTES (RACE TRACK ROAD)

- LIGHT FIXTURES AND POLES TO BE FURNISHED AND INSTALLED BY FP&L (FLORIDA POWER & LIGHT).
- ROADWAY CONTRACTOR NEEDS TO COORDINATE THE REMOVAL OF THE EXISTING LIGHTING WITH FPL SUCH THAT:
 - NIGHTTIME ILLUMINATION IS MAINTAINED AT ALL TIMES.
 - THE EXISTING STREET LIGHTING IN THE AREAS OF REMOVAL AND THE NEW FPL ROADWAY LIGHTING ARE NOT ILLUMINATED AT THE SAME TIME.
- REMOVE THE EXISTING STREET LIGHTING SUCH THAT THE REMAINING PORTION OF THE EXISTING MEDIAN STREET LIGHTING SYSTEM IS OPERATIONAL.
- FPL WILL BE RESPONSIBLE FOR THE RESTORATION OF THE PROJECT AREA REMOVED OR DAMAGED RESULTING FROM THE INSTALLATION OF THE FPL SUPPLIED LIGHT POLES AND ASSOCIATED HARDWARE (PULL BOXES, CONDUIT, ETC.)
- FP&L WILL MAINTAIN THE ROADWAY LIGHTING THROUGH A MAINTENANCE AGREEMENT WITH THE CITY OF POMPANO BEACH.

ROADWAY LIGHTING DESIGN CRITERIA

AVERAGE INITIAL INTENSITY	1.1 FOOT CANDLES
UNIFORMITY RATIO AVG./MIN.	4:1 OR LESS
MAX./MIN.	10:1 OR LESS
WIND SPEED	170 MPH
VEILING LUMINANCE	0.4:1 OR LESS

LEGEND (RACE TRACK RD)

-  PROPOSED FPL STREET LIGHT
HOLOPHANE MODEL: TEARDROP (MEMPHIS)
TYPE P45S PERFORMANCE PACKAGE, 144 W, 4000K CCT
DESIGNED FOR TYPE IV, SHORT DISTRIBUTION
WITH 6-FT BRACKET ARM (FPL ROADWAY LIGHTING CATALOG: BRACKET OPTION 3)
37-FT CONCRETE POLE, 30-FT MOUNTING HEIGHT (FPL ROADWAY LIGHTING CATALOG: POLE OPTION 4)
CURVE NO.: MPL3_P45S_40K_TG3_RFD330680.ies
-  EXISTING STREET LIGHT TO REMAIN
-  EXISTING STREET LIGHT (BACK TO BACK) TO REMAIN
-  EXISTING STREET LIGHT (BACK TO BACK) TO BE REMOVED BY CONTRACTOR.






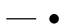
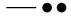



GENERAL NOTES (POWERLINE ROAD)

- THE PROPOSED CONVENTIONAL LIGHTING SYSTEM TO BE FURNISHED AND INSTALLED BY ROADWAY CONTRACTOR.
- REMOVE THE EXISTING STREET LIGHTING AT THE LOCATIONS SHOWN IN THE PLANS SUCH THAT THE REMAINING PORTION OF THE EXISTING STREET LIGHTING SYSTEM IS OPERATIONAL.
- THE CITY OF POMPANO BEACH WILL BE THE MAINTAINING AGENCY FOR THE PROPOSED CONVENTIONAL LIGHTING SYSTEM AND FP&L WILL CONTINUE TO MAINTAIN THE STREET LIGHTING ON FPL'S POWER POLES THROUGH A MAINTENANCE AGREEMENT WITH THE CITY OF POMPANO BEACH.
- CONVENTIONAL LIGHT POLE NOS. 2 AND 3 MUST BE LOCATED AND ORIENTED ALONG THE BEARINGS PROVIDED TO ACHIEVE THE MINIMUM 10-FT CLEARANCE FROM THE FPL POWERLINES. FIELD ADJUSTMENTS TO THESE POLE LOCATIONS AND ORIENTATIONS MUST BE APPROVED BY THE ENGINEER.

ROADWAY LIGHTING DESIGN CRITERIA (SIGNALIZED INTERSECTION)

AVERAGE INITIAL INTENSITY	3.0 STD, 1.5 MIN FOOT CANDLES (HORIZ)
	1.5 STD, 1.2 MIN FOOT CANDLES (VERT)
UNIFORMITY RATIO AVG./MIN.	4:1 OR LESS
MAX./MIN.	10:1 OR LESS
WIND SPEED	160 MPH

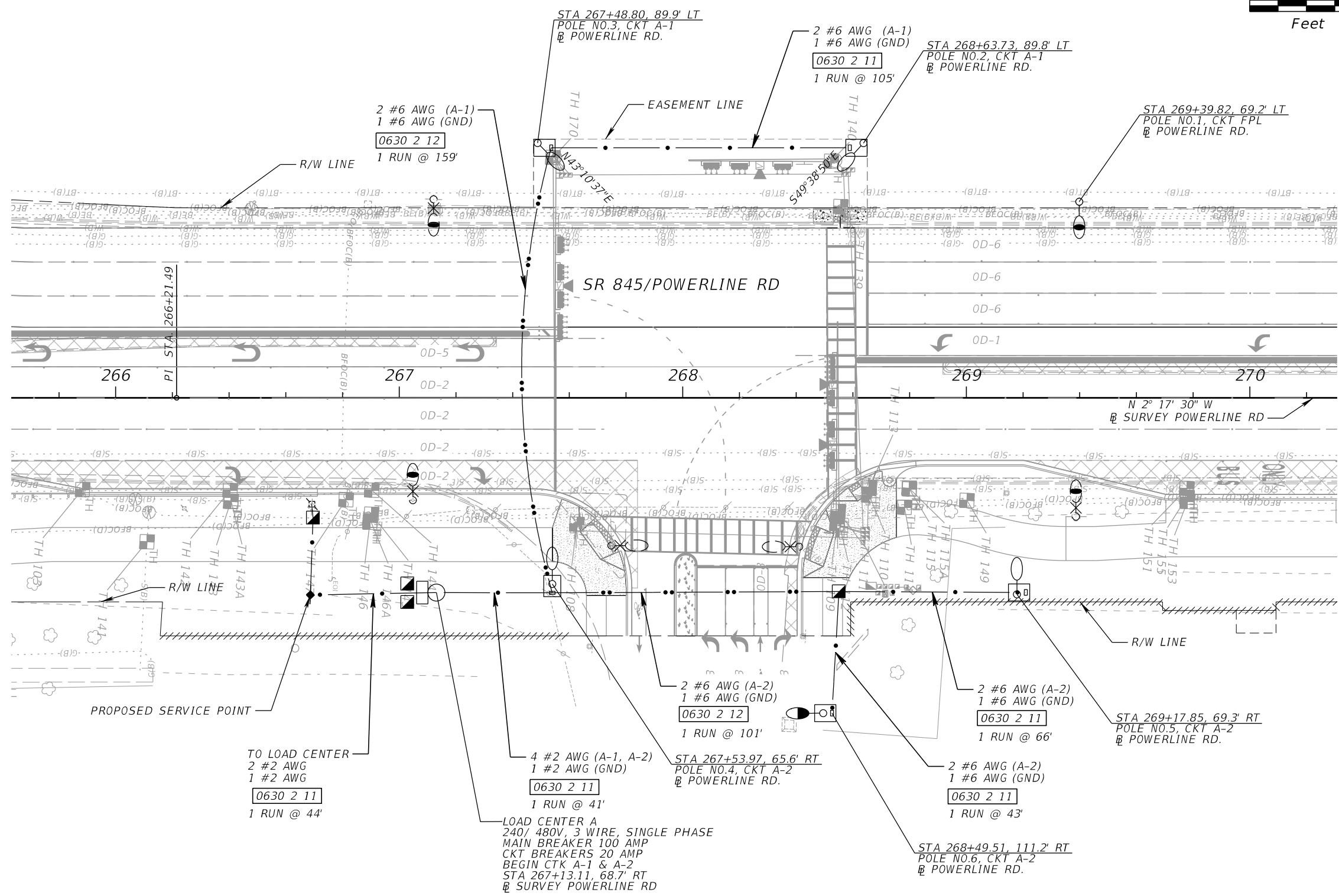
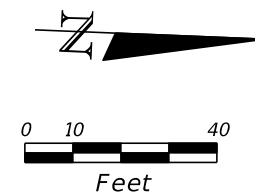
LEGEND (POWERLINE RD)

-  186 WATT LED FIXTURE DESIGNED FOR TYPE IV MEDIUM DISTRIBUTION USE AMERICAN ELECTRIC LIGHTING ATB2_P602_R4_3K_186W_RFD332103.ies FROM FPL LED LIGHTING SOLUTIONS CATALOG. RE-LAMP EXISTING BRACKET ARM 3000 K CCT 24,937 LUMENS
-  186 WATT LED FIXTURE DESIGNED FOR TYPE IV MEDIUM DISTRIBUTION WIRED FOR 480 VOLT OPERATION. USE AMERICAN ELECTRIC LIGHTING ATB2_P602_R4_3K.ies OR APPROVED EQUAL. GROUND MOUNT POLE WITH FRANGIBLE TRANSFORMER BASE, CONCRETE SLAB AND PULL BOX 3000 K CCT 26,278 LUMENS.
-  264 WATT LED FIXTURE DESIGNED FOR TYPE IV MEDIUM DISTRIBUTION WIRED FOR 480 VOLT OPERATION. USE AMERICAN ELECTRIC LIGHTING ATB2_P604_R4_3K.ies OR APPROVED EQUAL. GROUND MOUNT POLE WITH FRANGIBLE TRANSFORMER BASE, CONCRETE SLAB AND PULL BOX 3000 K CCT 32,447 LUMENS
-  EXISTING FPL LUMINAIRE AND BRACKET ARM TO BE REMOVED BY FPL
-  EXISTING LIGHT POLE COMPLETE TO BE REMOVED BY ROADWAY CONTRACTOR
-  2" CONDUIT (UNDERGROUND) WITH CONDUCTORS INSIDE (SEE PLANS FOR CONDUCTOR SIZE). RUN ONE (1) COPPER BOND CONDUCTOR (GREEN INSULATION) INSIDE CONDUIT WITH OTHER CONDUCTORS.
-  2" CONDUIT DIRECTIONAL BORE UNDER PAVEMENT WITH CONDUCTORS INSIDE (SEE PLANS FOR CONDUCTOR SIZE). EXTEND CONDUIT BEYOND EDGE OF PAVEMENT TO PULL BOXES WHEN INSTALLING INSIDE CONDUIT WITH OTHER CONDUCTORS. RUN ONE (1) COPPER BOND CONDUCTOR (GREEN INSULATION) INSIDE CONDUIT WITH OTHER CONDUCTORS.
-  PROPOSED LIGHTING PULL BOX
-  PROPOSED LOAD CENTER
-  PROPOSED SERVICE POINT

POWERLINE RD								
POLE NO.	CIRCUIT	STATION	OFFSET	SIDE	ARM LENGTH	LUMINAIRE WATTAGE	MOUNTING HEIGHT	PAY ITEM
1	FPL	269+39.82	69.20'	LT	8'	186	30'	N/A FPL SUPPLIED
2	A-1	268+63.73	89.80'	LT	10'	264	45'	0715 61-421
3	A-1	267+48.80	89.90'	LT	10'	264	45'	0715 61-421
4	A-2	267+53.97	65.60'	RT	10'	264	45'	0715 61-421
5	A-2	269+17.85	69.30'	RT	10'	264	45'	0715 61-421
6	A-2	268+49.51	111.20'	RT	10'	186	45'	0715 61-421

LIGHTING

<p align="center">REVISIONS</p> <table border="1"> <thead> <tr> <th>DATE</th> <th>DESCRIPTION</th> <th>DATE</th> <th>DESCRIPTION</th> </tr> </thead> <tbody> <tr> <td> </td> <td> </td> <td> </td> <td> </td> </tr> </tbody> </table>				DATE	DESCRIPTION	DATE	DESCRIPTION					<p>ANTHONY ALFRED, P.E. P.E. LICENSE NUMBER 51857 KIMLEY-HORN AND ASSOCIATES, INC. 355 ALHAMBRA CIRCLE, SUITE 1400 9 MIAMI, FLORIDA 33134</p>	<p align="center">POMPANO PARK JV LAND HOLDINGS, LLC</p> <p align="center">LIVE! POMPANO RESORTS</p>	<p align="center">GENERAL NOTES</p>	<p align="center">SHEET NO. 6</p>
DATE	DESCRIPTION	DATE	DESCRIPTION												



POWERLINE RD

REVISIONS				ANTHONY ALFRED, P.E. P.E. LICENSE NUMBER 51857 KIMLEY-HORN AND ASSOCIATES, INC. 355 ALHAMBRA CIRCLE, SUITE 1400 10 MIAMI, FLORIDA 33134	POMPAÑO PARK JV LAND HOLDINGS, LLC LIVE! POMPAÑO RESORTS	SHEET NO. L-3
DATE	DESCRIPTION	DATE	DESCRIPTION			

LIGHTING PLAN