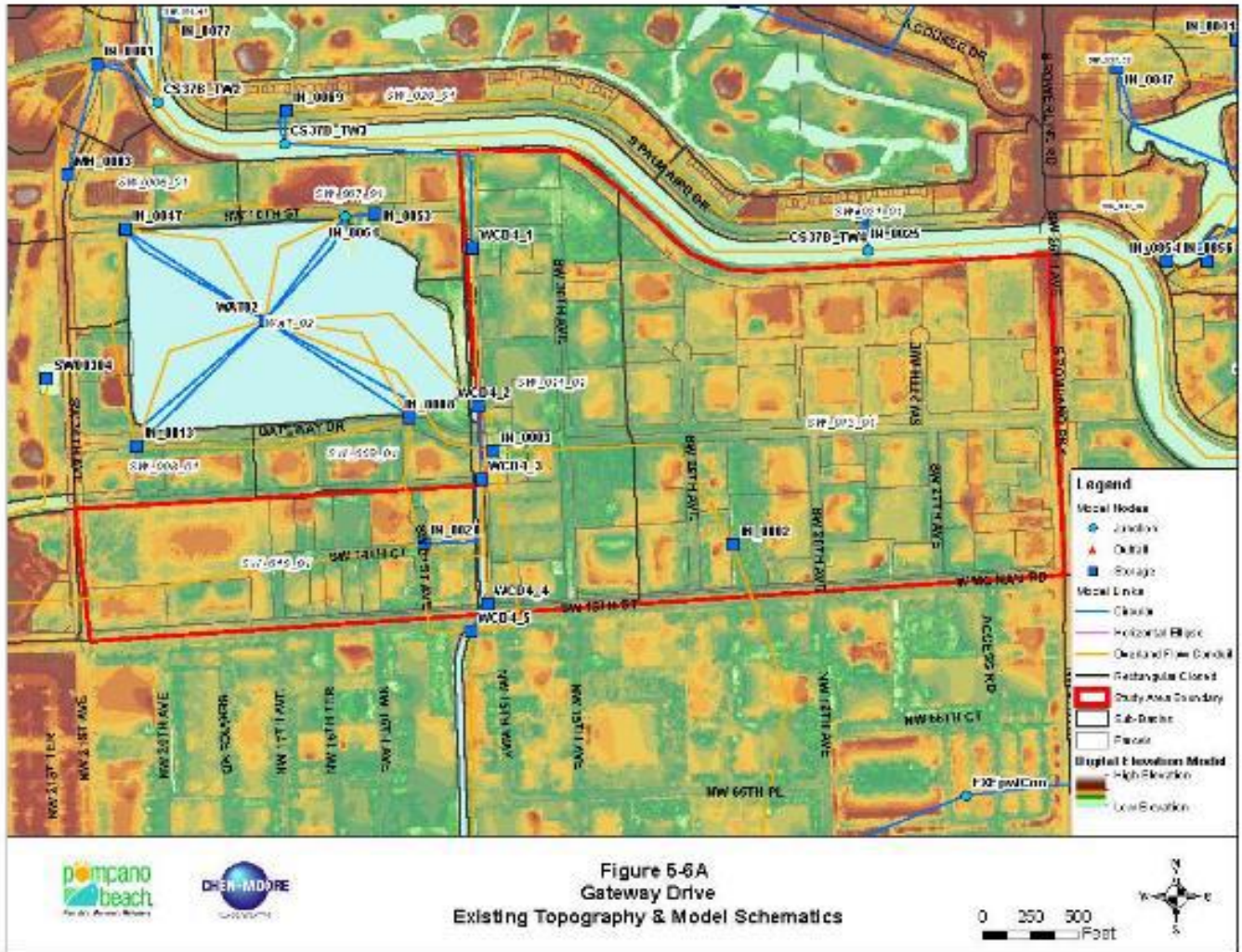


**SW 2nd Street Drainage improvements** in the area of SW 2nd Street between Dixie Highway & Cypress Rd., SW 1st Ave. between 2nd St. and Atlantic Blvd., & SW 1st Terrace and SW 1st Ct. between SW 2nd St. and S Cypress Rd.



**Gateway Drive Drainage improvements** in the area boundary of West McNab Rd. to the south, Powerline Rd. to the east, SW 36th Ave. to the west & SFWMD C14 Canal to north



**Kendall Lake Drainage improvements** in the area boundary of NW 21st Street to the north, NW 16th Street to the south, NW 5th Way to the west and NW 1st Avenue to the east

