

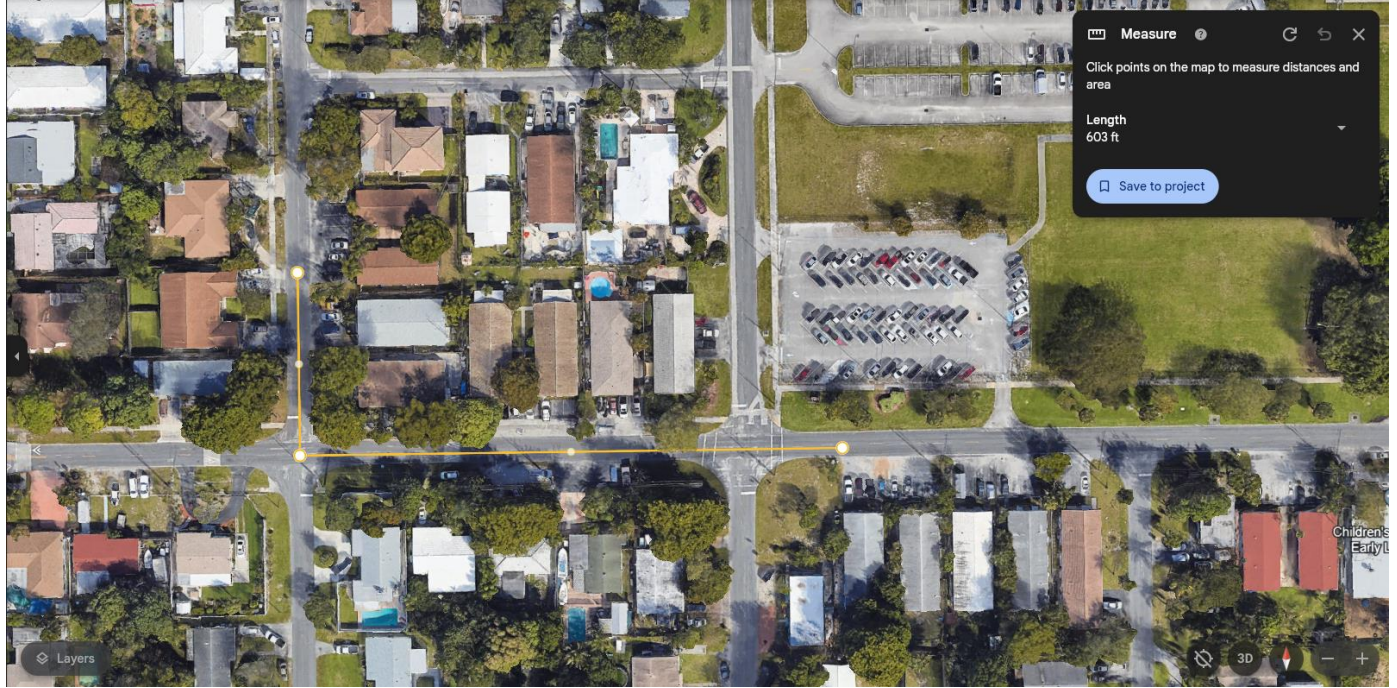
Scenario #1:

Walking Distance 637 FT (Google Earth)



Scenario #2:

Driving Distance 603 FT (Google Earth)



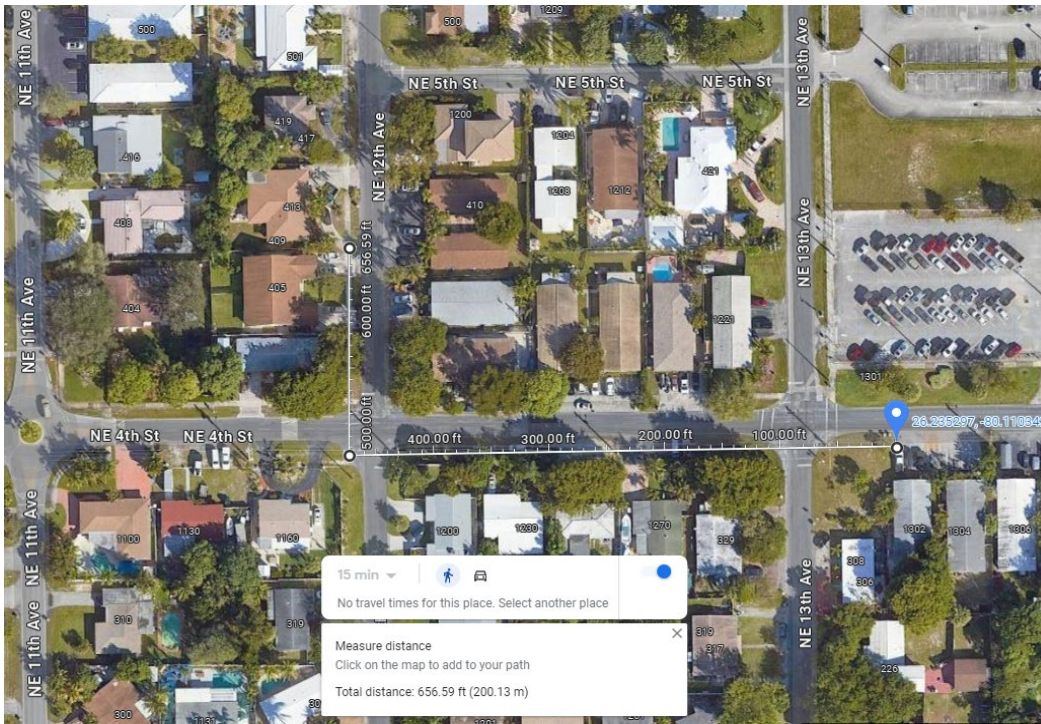
BCPA Distance Measurement:

Using the BCPA aerial map measuring tool and starting at 1302 NE 4th St headed towards at 413 NE 12th Ave, the distance measures 664.8 feet. See below.



Google Maps Distance Measurement:

Using the Google Maps measuring tool and starting at 1302 NE 4th St headed towards at 413 NE 12th Ave, the distance measures 656.59 feet. See below.

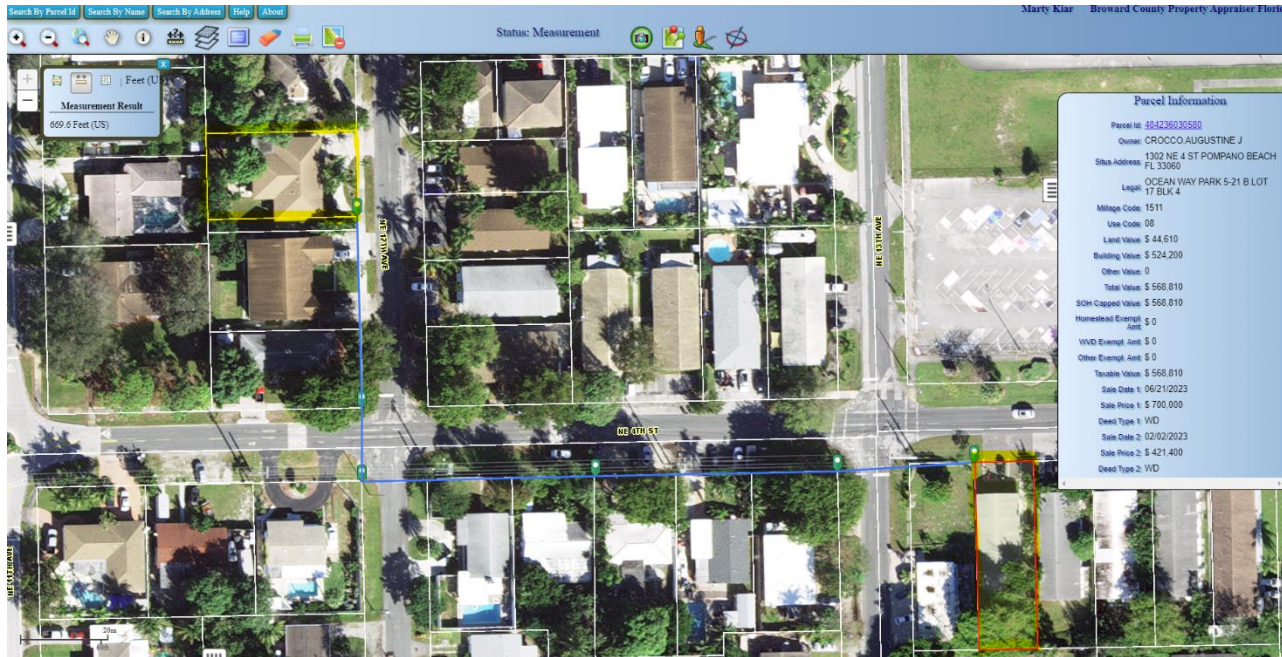


Distance (in feet) between the properties located at 1302 NE 4th Street and 413 NE 12th Avenue measured from the nearest lot line

The distance along the pedestrian right of way between the two sites is approximately 665 feet (following the blue lines). The sites are located on two separate blocks and I mapped three different scenarios to determine the separation distance in feet. I utilized both BCPA and Google map to measure the distances.

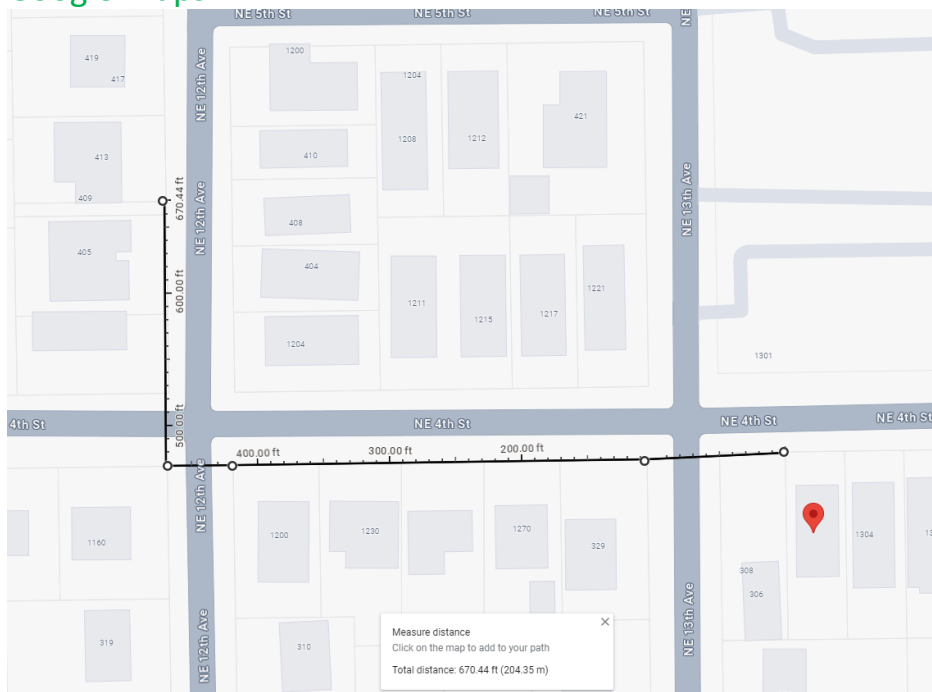
Scenario 1 = 669.6 Feet

BCPA:



Scenario 1 = 670.44

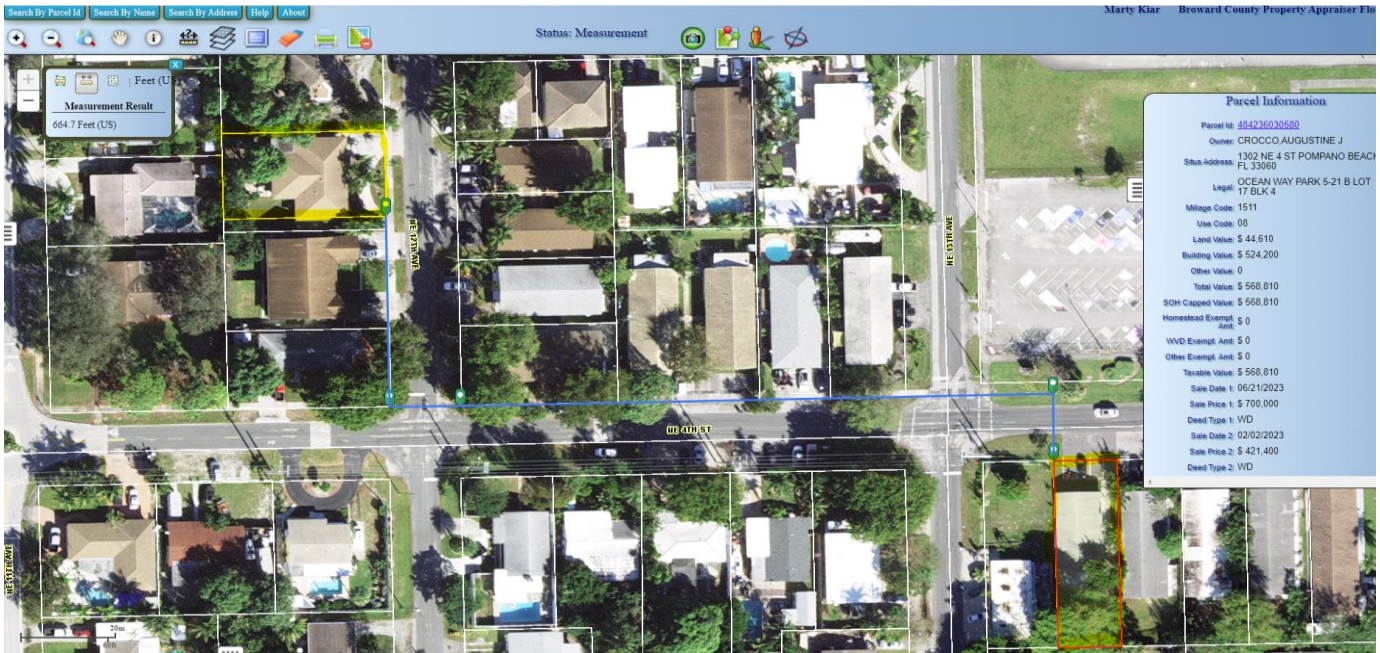
Google Maps:



Distance (in feet) between the properties located at 1302 NE 4th Street and 413 NE 12th Avenue measured from the nearest lot line

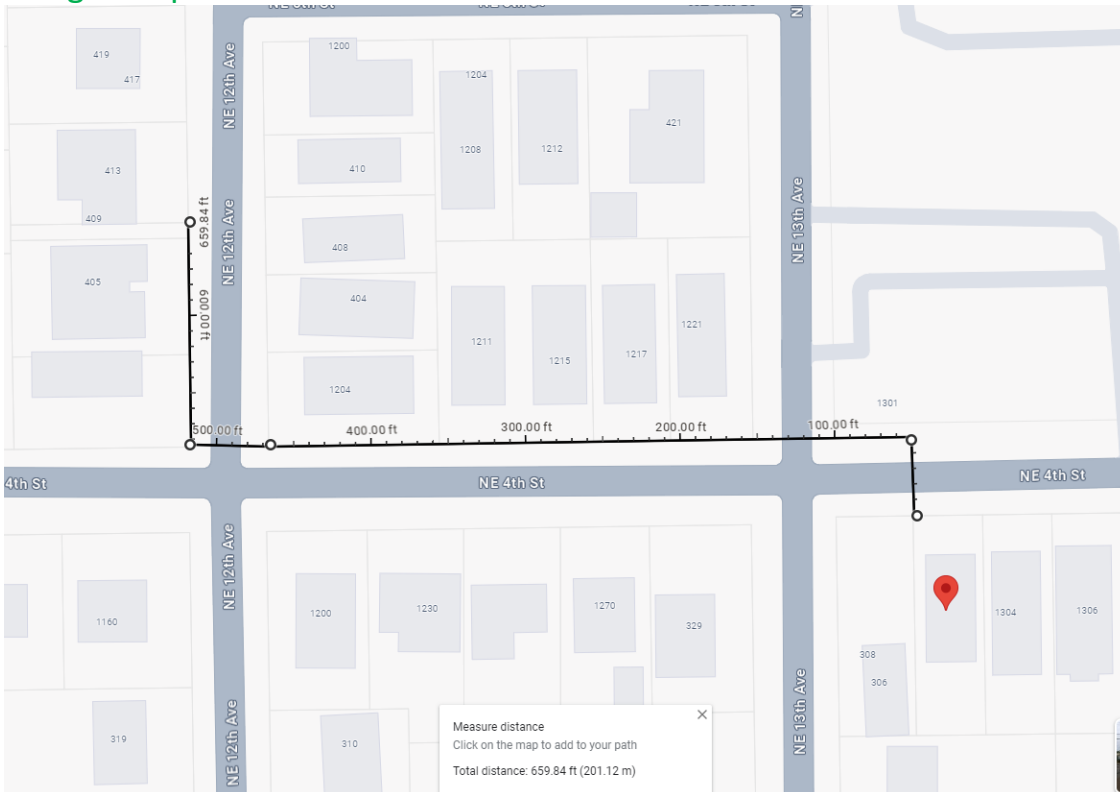
Scenario 2 = 664.7 Feet

BCPA



Scenario 2= 659.84

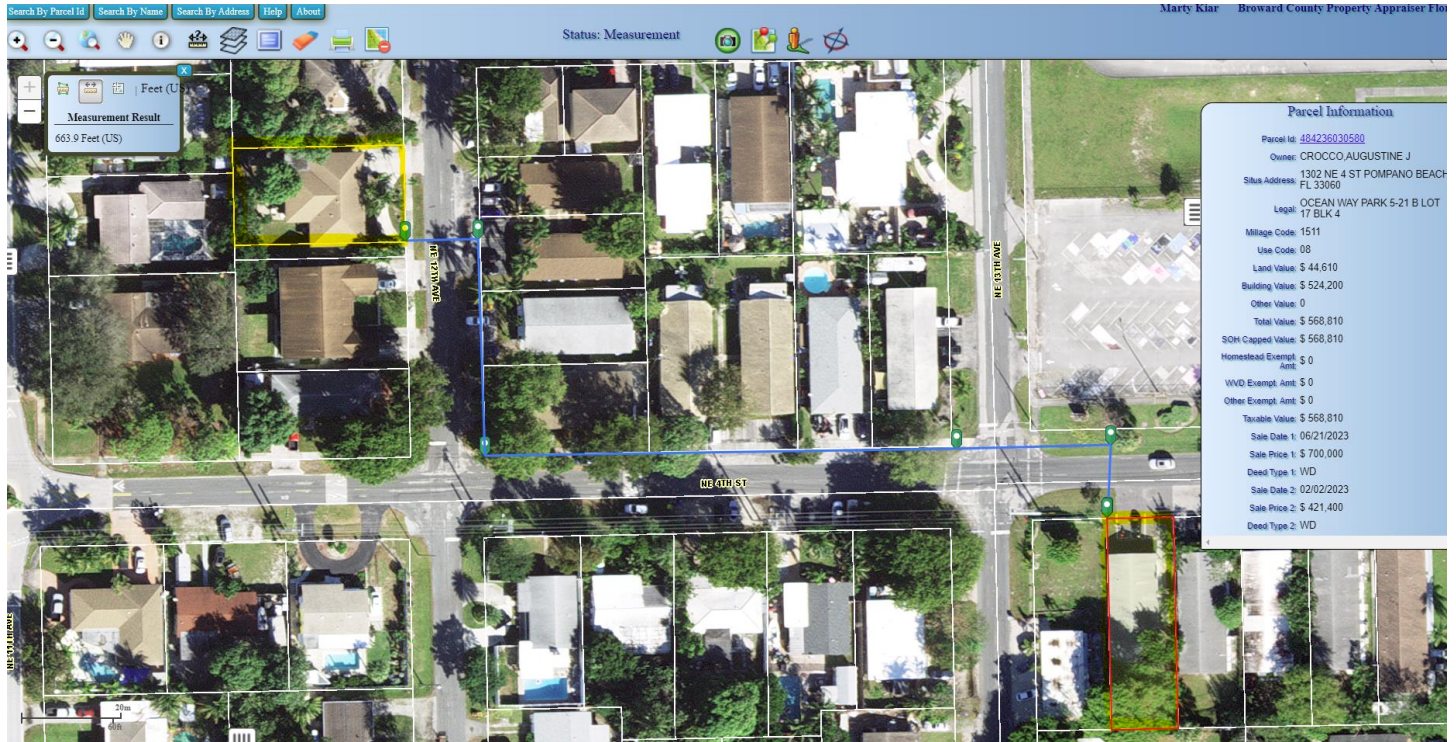
Google Maps:



Distance (in feet) between the properties located at 1302 NE 4th Street and 413 NE 12th Avenue measured from the nearest lot line

Scenario 3 = 663.9 Feet

BCPA:



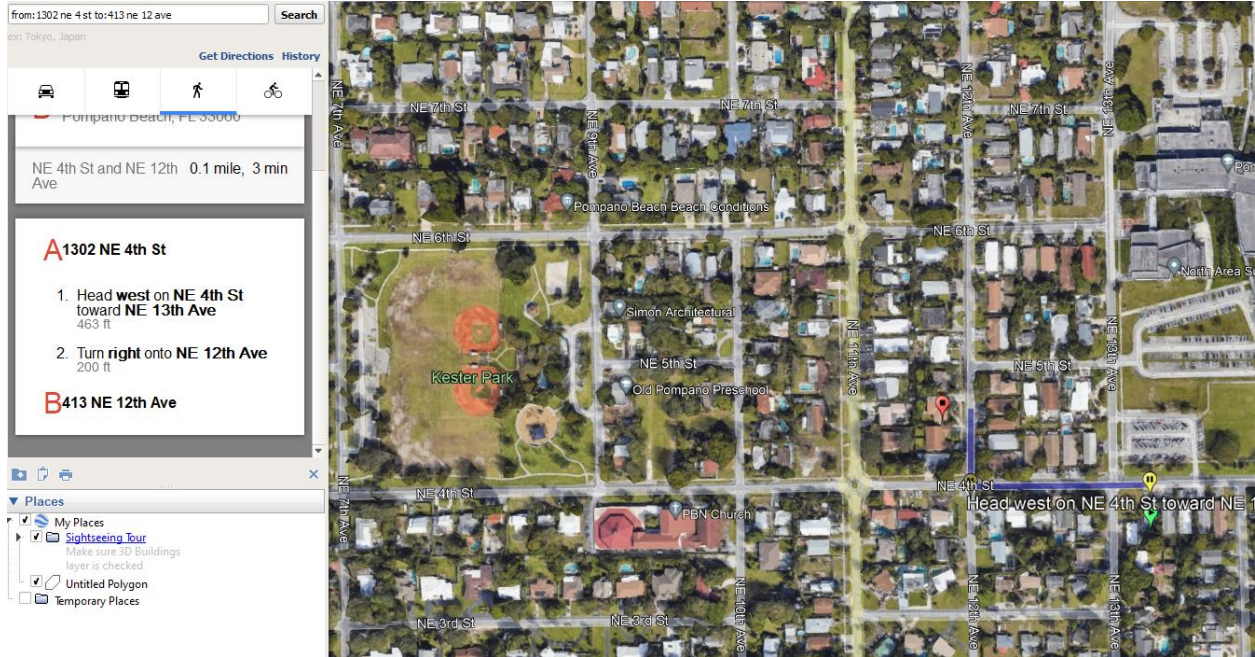
Scenario 3 = 661.69 Feet

Google Maps:



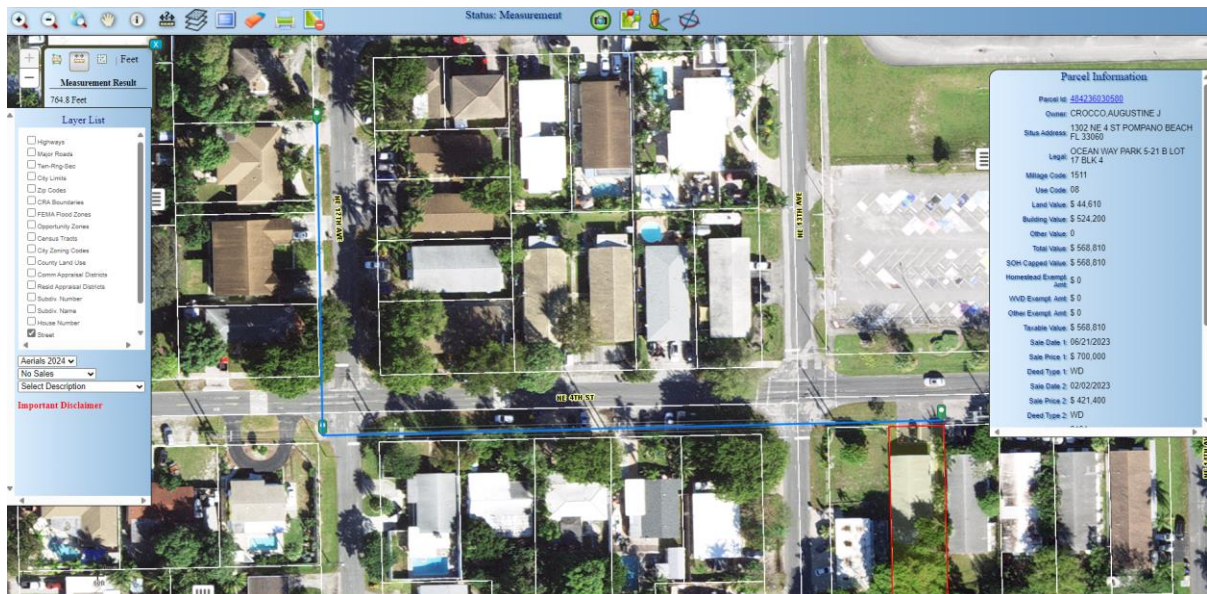
Google Earth Directions Tool:

According to Google Earth’s directions tool, the distance between 1302 NE 4th ST and 413 NE 12th AVE utilizing the shortest logical route is 663 feet. The measurements are presumably taken from each pin point on the map. See below.



BCPA Website:

Using the BCPA aerial map measuring tool, starting at the eastern property line along the public right of way at 1302 NE 4th ST headed west toward NE 12th AVE and then north to the northern property line along the public right of way at 413 NE 12th AVE, the distance measures 764.8 feet. See below.



Google Earth Measurement Tool:

Using the measurement tool in Google Earth, the distance measures 750.15 feet. See below.

