

GARDNER + SEMLER
LANDSCAPE ARCHITECTURE
WWW.GSLADESIGN.COM

17670 NW 78th AVE., SUITE 214
MIAMI, FL 33015
P 305.392.1016 F 305.392.1019
CORP. ID #0000266

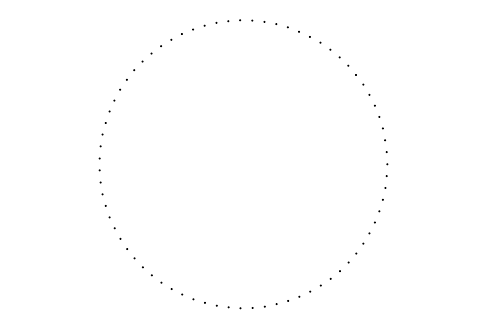
This drawing is the property of GSLA Design and is not to be reproduced or copied in whole or part without written permission. It is not to be used on any other project and is to be returned on request. Contractor is responsible for verifying all site conditions prior to proceeding with work.
COPYRIGHT © 2020

1820 SW 21ST STREET
1820 SW 21ST STREET
POMPANO BEACH, FL 33069



REV.

TITLE
EXISTING TREE
DISPOSITION
PLAN

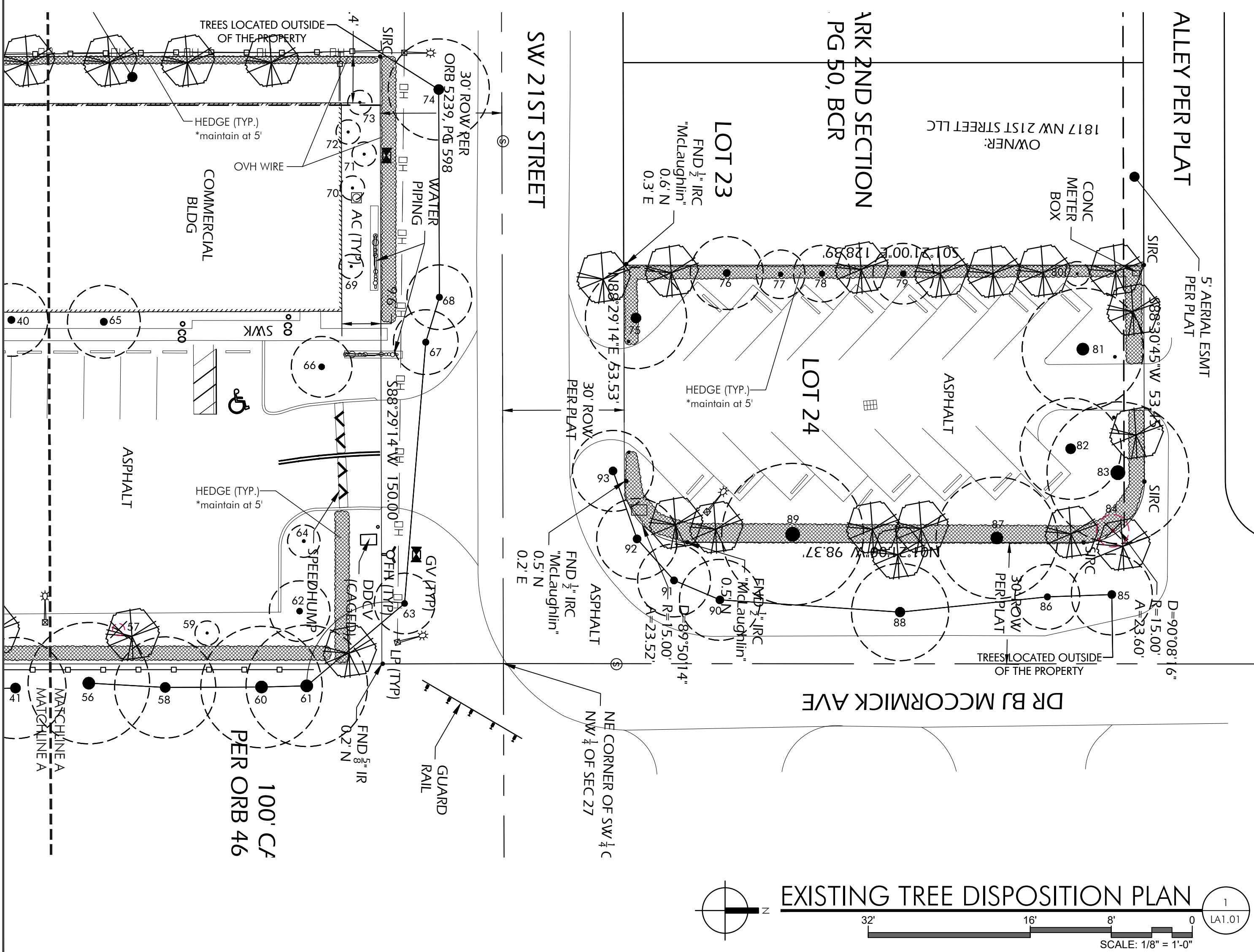
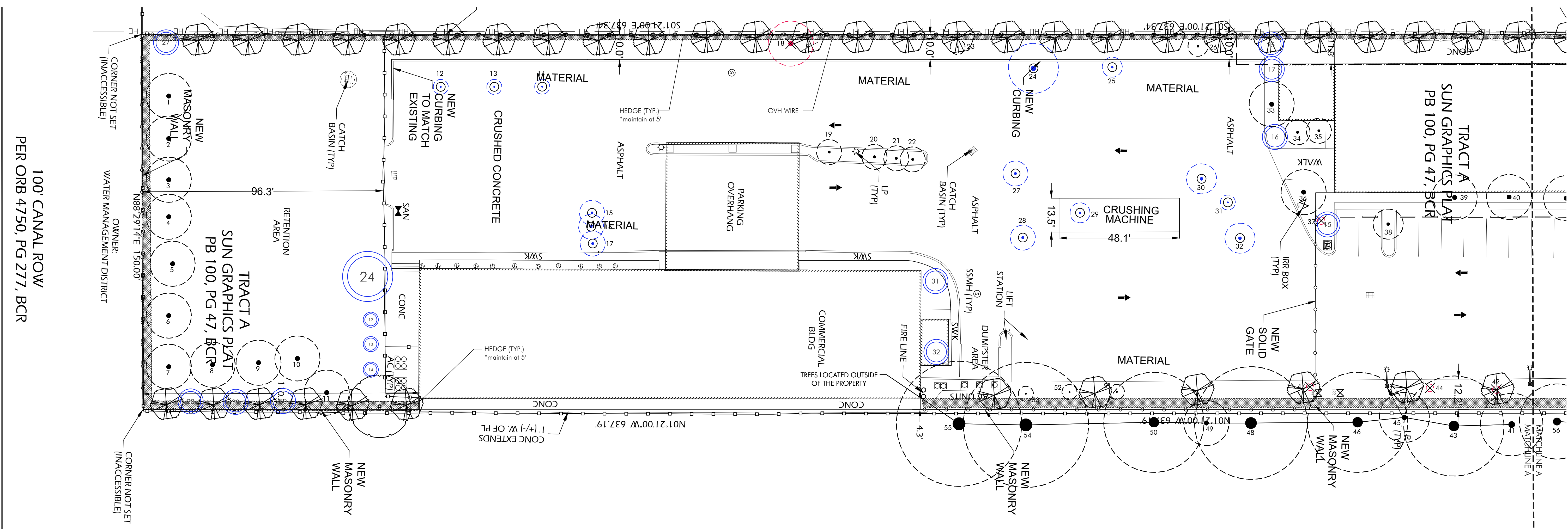


Kan Gardner
Keith Semler

DATE
6.23.2023

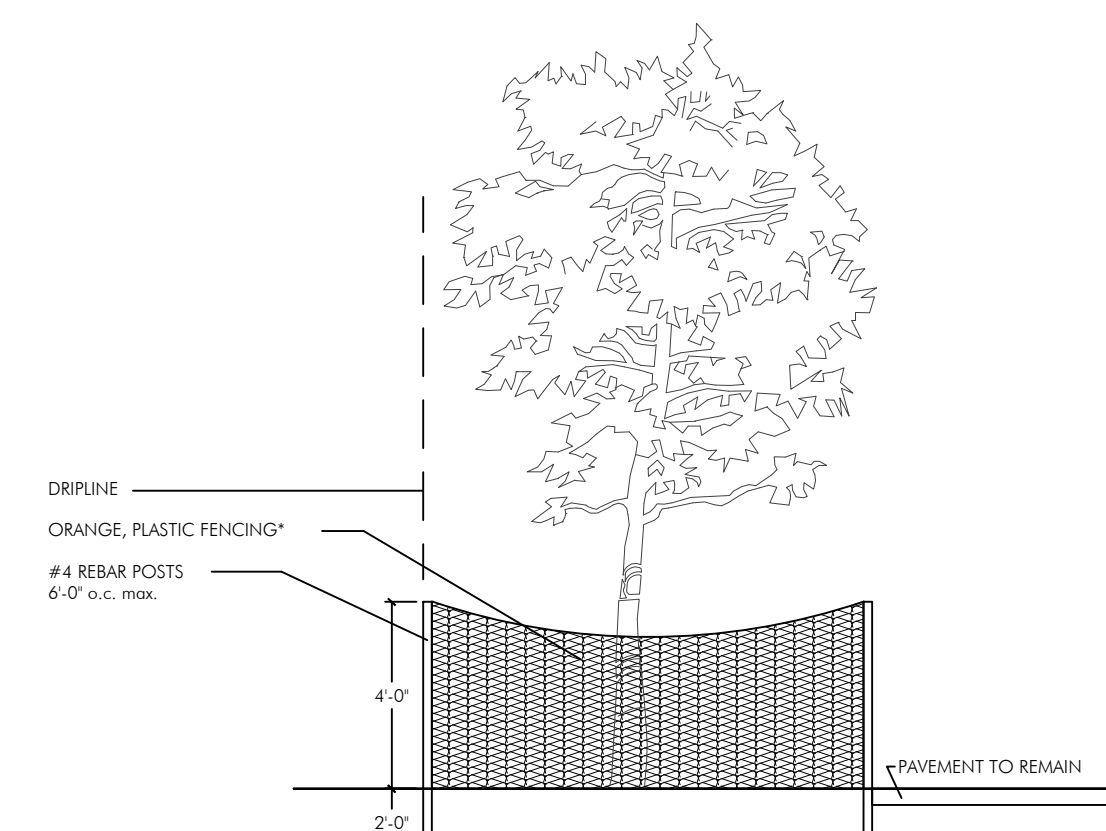
SCALE
as noted

SHEET
LA1.01



LEGEND

- EXISTING TREE TO REMAIN
- EXISTING TREE TO BE REMOVED
- EXISTING TREE TO BE TRANSPLANTED
- NEW LOCATION OF TRANSPLANTED TREE/PALM



*LIMITS OF TREE PROTECTION ARE TO BE ESTABLISHED BASED ON ANSI A300 ROOT MANAGEMENT STANDARDS. AS A GENERAL RULE THE TREE PROTECTION ZONE MUST EXTEND 10' PER 1" OF TREE DBH. PLACE ORANGE PLASTIC FENCING (BY TENAR OR OTHER APPROVED EQUAL) AROUND INDIVIDUAL TREES AND TREE CLUMPS TO REMAIN ON SITE IN ANY AREAS WITHIN THE LIMITS OF CONSTRUCTION. BARRIER SHALL BE MAINTAINED IN AN UPRIGHT POSITION AT ALL TIMES.

TREE PROTECTION DETAIL

N.T.S.





17670 NW 78th AVE., SUITE 214
MIAMI, FL 33015
P 305.392.1016 F 305.392.1019
CORP. ID # 0000266

This drawing is the property of GS&L Design and is not to be reproduced or copied in whole or part without written permission. It is not to be used on any other project and is to be returned on request. Contractor is responsible for verifying all site conditions prior to proceeding with work.

COPYRIGHT © 2020

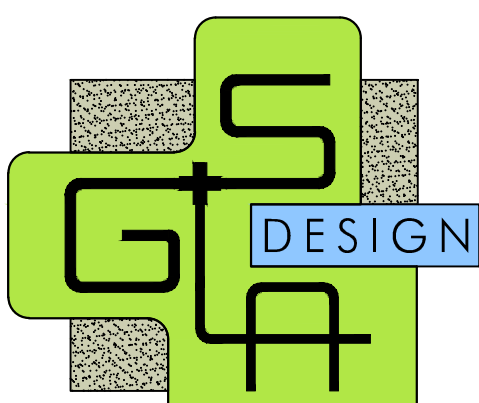
EXISTING TREE DISPOSITION LIST										
KEY	BOTANICAL NAME	COMMON NAME	SIZE				DISPOSITION			MITIGATION
			HT. (ft.)	SPD. (ft.)	DBH. (in.)	CONDITION	REMAIN	REMOVE	TRANSPL.	
1	Quercus virginiana	Live Oak	20	18	6	Good	X			
2	Quercus virginiana	Live Oak	20	18	6		X			
3	Quercus virginiana	Live Oak	20	18	6		X			
4	Quercus virginiana	Live Oak	20	18	6		X			
5	Quercus virginiana	Live Oak	20	18	6		X			
6	Quercus virginiana	Live Oak	20	18	6		X			
7	Quercus virginiana	Live Oak	20	18	6		X			
8	Quercus virginiana	Live Oak	20	18	6		X			
9	Quercus virginiana	Live Oak	20	18	6		X			
10	Quercus virginiana	Live Oak	20	18	6		X			
11	Quercus virginiana	Live Oak	20	18	6		X			
12	Tabebuia heterophylla	Pink Trumpet Tree	10	6	3				X	
13	Tabebuia heterophylla	Pink Trumpet Tree	10	6	3				X	
14	Tabebuia heterophylla	Pink Trumpet Tree	10	6	3				X	
15	Sabal palmetto	Sabal Palm	20	10	9				X	
16	Sabal palmetto	Sabal Palm	20	10	9				X	
17	Sabal palmetto	Sabal Palm	20	10	9				X	
18	Schefflera actinophylla	Umbrella Tree	18	18	multi			X		N/A
19	Sabal palmetto	Sabal Palm	18	10	9		X			
20	Sabal palmetto	Sabal Palm	18	10	9		X			
21	Sabal palmetto	Sabal Palm	18	10	9		X			
22	Sabal palmetto	Sabal Palm	18	10	9		X			
23	Ligustrum japonicum	Wax Leaf Privet	6	6	multi					
24	Tabebuia heterophylla	Pink Trumpet Tree	20	20	6				X	
25	Ligustrum japonicum	Wax Leaf Privet	8	8	multi				X	
26	Ligustrum japonicum	Wax Leaf Privet	8	8	multi		X			
27	Tabebuia heterophylla	Pink Trumpet Tree	12	10	4				X	
28	Tabebuia heterophylla	Pink Trumpet Tree	12	10	4				X	
29	Tabebuia heterophylla	Pink Trumpet Tree	8	8	2				X	
30	Tabebuia heterophylla	Pink Trumpet Tree	1.6	12	4				X	
31	Phoenix roebelinii	Pygmy Date Palm	10	6	3		X			
32	Phoenix roebelinii	Pygmy Date Palm	10	12	triple				X	
33	Quercus virginiana	Live Oak	18	18	multi		X			
34	Sabal palmetto	Sabal Palm	22	10	9		X			
35	Sabal palmetto	Sabal Palm	22	10	9		X			
36	Quercus virginiana	Live Oak	18	18	7		X			
37	DEAD							X		N/A
38	Quercus virginiana	Live Oak	12	12	multi		X			
39	Lagerstroemia indica	Crape Myrtle	18	18	multi		X			
40	Lagerstroemia indica	Crape Myrtle	18	18	multi		X			
41	Bucida buceras	Black Olive	30	25	9		X			
42	DEAD							X		N/A
43	Bucida buceras	Black Olive	40	40	18		X		X	N/A
44	DEAD							X		N/A
45	Bucida buceras	Black Olive	35	20	12		X			
46	Bucida buceras	Black Olive					X			
47	DEAD							X		N/A
48	Bucida buceras	Black Olive	30	45	18		X			
49	Bucida buceras	Black Olive	18	18	9		X			
50	Bucida buceras	Black Olive	40	40	16		X			
51	Quercus virginiana	Live Oak	12	6	3		X			
52	Quercus virginiana	Live Oak	12	6	3		X			
53	Quercus virginiana	Live Oak	12	6	3		X			
54	Bucida buceras	Black Olive	50	50	24		X			
55	Bucida buceras	Black Olive	50	50	24		X			
56	Bucida buceras	Black Olive	30	30	14		X			
57	DEAD							X		N/A
58	Bucida buceras	Black Olive	30	25	11		X			
59	Quercus virginiana	Live Oak	14	6	3		X			
60	Bucida buceras	Black Olive	30	30	16		X			
61	Bucida buceras	Black Olive	30	30	16		X			
62	Quercus virginiana	Live Oak	25	15	5		X			
63	Bumerao simarouba	Gumbo Limbo	12	15	multi		X			
64	Lagerstroemia indica	Crape Myrtle	16	8	multi		X			
65	Lagerstroemia indica	Crape Myrtle	18	18	multi		X			
66	Quercus laurifolia	Laurel Oak	8	15	multi		X			
67	Lagerstroemia indica	Crape Myrtle	16	16	multi		X			
68	Bumerao simarouba	Gumbo Limbo	16	16	7		X			
69	Magnolia grandiflora	Southern Magnolia	18	6	4		X			
70	Magnolia grandiflora	Southern Magnolia	18	6	4		X			
71	Magnolia grandiflora	Southern Magnolia	18	6	4		X			
72	Magnolia grandiflora	Southern Magnolia	18	6	4		X			
73	Magnolia grandiflora	Southern Magnolia	18	6	4		X			
74	Bumerao simarouba	Gumbo Limbo	18	25	7		X			
75	Bumerao simarouba	Gumbo Limbo	28	25	14		X			
76	Quercus virginiana	Live Oak	18	18	4		X			
77	Swietenia mahogani	West Indies Mahogany	22	12	3		X			
78	Quercus virginiana	Live Oak	20	14	5		X			
79	Quercus virginiana	Live Oak	22	15	6		X			
80	Quercus virginiana	Live Oak	12	6	3		X			
81	Bucida buceras	Black Olive	30	30	14		X			
82	Bucida buceras	Black Olive	30	25	12		X			
83	Bucida buceras	Black Olive	35	35	16		X			
84	Schefflera actinophylla	Umbrella Tree	16	8	3			X		N/A
85	Bumerao simarouba	Gumbo Limbo	20	20	7		X			
86	Bumerao simarouba	Gumbo Limbo	26	16	10		X			
87	Bucida buceras	Black Olive	35	30	16		X			
88	Bumerao simarouba	Gumbo Limbo	24	24	8		X			
89	Bucida buceras	Black Olive	26	35	14		X			
90	Bumerao simarouba	Gumbo Limbo	20	20	9		X			
91	Bumerao simarouba	Gumbo Limbo	18	18	7		X			
92	Quercus virginiana	Live Oak	20	20	10		X			
93	Quercus virginiana	Live Oak	18	20	8		X			

1820 SW 21ST STREET
POMPANO BEACH, FL 33069

[illegible]

EXISTING TREE DISPOSITION LIST

Ken Gardner Kiehl Semler	FL LA #1569 FL LA #6667205
DATE	6.23.2023
SCALE	as noted
SHEET	



GARDNER + SEMLER
LANDSCAPE ARCHITECTURE
WWW.GSLADESIGN.COM

17670 NW 78th AVE., SUITE 214
MIAMI, FL 33015
P 305.392.1016 F 305.392.1019
CORP. ID # 0000266

This drawing is the property of GSLA Design and is not to be reproduced or copied in whole or part without written permission. It is not to be used on any other project and is to be returned on request. Contractor is responsible for verifying all site conditions prior to proceeding with work.
COPYRIGHT © 2020

1820 NW 21ST STREET

1820 SW 21ST STREET

POMPANO BEACH, FL 33069



PLANTING PLAN

Kan Gardner
Keith Semler

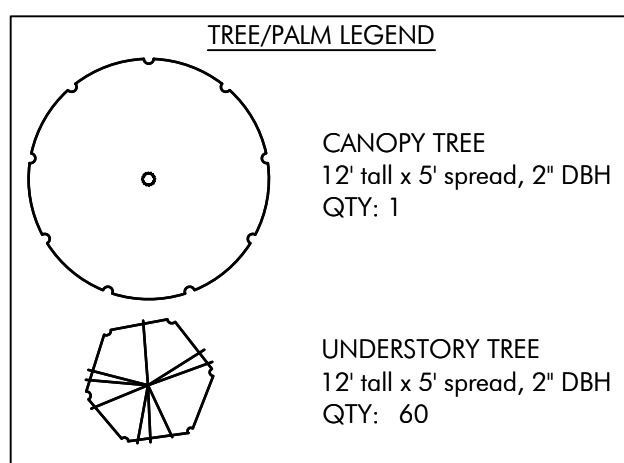
DATE 6.23.2023

SCALE as noted

SHEET LA2.01

LANDSCAPE LEGEND - Main Lot (This information to be permanently affixed to the plan.)				
Zoning: I-1X				
Gross Lot Area = 95,590 s.f.				
Landscape Area = TBD (10% Req.)				
Description	Application	Calculation	Qty. Required	Qty. Provided
Site Trees	1 tree/3,000 s.f.	37,060 s.f./3,000	32	32
Site Shrubs	5 shrubs/3,000 s.f.	37,060 s.f./3,000 x 5	160	160
Mitigation Trees				
VUA Buffer	1 tree/30 l.f.	133/30	5	5
(Less Perimeter Buffer)	Continuous Hedge	133/2.5	54	54
Perimeter Landscape				
Waterway Buffer	1 tree/40 l.f.	587/40	15	15
Continuous Hedge		1509/2.5	604	604
1 understory tree/30 l.f.		587/30	20	20
Street Trees				
SW 21st St.	1 tree/25 l.f.	150/25	6	6
Total Trees			102	102
Native Trees	50% of Req. Trees	16(.50)	8	20

LANDSCAPE LEGEND - Satellite Lot (This information to be permanently affixed to the plan.)				
Zoning: I-1X				
Gross Lot Area = 8,696 s.f.				
Landscape Area = TBD (10% Req.)				
Description	Application	Calculation	Qty. Required	Qty. Provided
Site Trees	1 tree/3,000 s.f.	37,060 s.f./3,000	3	3
Site Shrubs	5 shrubs/3,000 s.f.	37,060 s.f./3,000 x 5	15	15
Mitigation Trees				
VUA Buffer	1 tree/30 l.f.	0/30	0	0
(Less Perimeter Buffer)	Continuous Hedge	0/2.5	0	0
Perimeter Landscape				
1 tree/30 l.f.		346/30	12	12
Continuous Hedge		346/2.5	139	139
1 understory tree/30 l.f.		346/30	12	12
Street Trees				
SW 21st St.	1 tree/25 l.f.	66/25	3	3
Dr. BJ McCormick Ave	1 tree/25 l.f.	110/25	6	6
Total Trees			36	36
Native Trees	50% of Req. Trees	16(.50)	8	20



PLANT LIST				
CANOPY TREES				
KEY	PLANT NAME	QTY.	UT.	SIZE
BUSI	Bursera simaruba	1	ea.	12' tall x 5' spread, 2" DBH
COER	Conocarpus erectus		ea.	12' tall x 5' spread, 2" DBH
LYLA	Lysiloma latisiliquum		ea.	12' tall x 5' spread, 2" DBH
QUVI	Quercus virginiana		ea.	12' tall x 5' spread, 2" DBH
SIGL	Simarouba glauca	60	ea.	12' tall x 5' spread, 2" DBH
CAWI	Canella winterana		ea.	10' tall x 5' spread, 1.5" DBH
CODI	Coccoloba diversifolia		ea.	10' tall x 5' spread, 1.5" DBH
COES	Conocarpus erectus var. "Sericeus"		ea.	10' tall x 5' spread, 1.5" DBH
COSE	Cordia sebestina	175	ea.	10' tall x 5' spread, 1.5" DBH
GYLU	Gymnanthes lucida		ea.	10' tall x 5' spread, 1.5" DBH
CHIC	Chrysobalanus icaco		ea.	24"x18"
EUFO	Eugenia foetida		ea.	24"x18"
HANO	Hamelia nodosa	175	ea.	24"x18"
PSBA	Psychotria bahamensis		ea.	24"x18"
RAKU	Radermachera var. "Kunning"		ea.	24"x18"
SERE	Serenoa repens var. "Silver"		ea.	24"x24"
TRDA	Tripsacum dachtyloides	8500	s.f.	solid sod
VAAN	Vallisneria spiralis		c.y.	3" layer over filter fabric
COQU	Coquina		c.y.	3" layer over filter fabric
PLNT	Planting Soil		c.y.	
TRDA	Tripsacum dachtyloides	8500	s.f.	solid sod
VAAN	Vallisneria spiralis		c.y.	3" layer over filter fabric
COQU	Coquina		c.y.	3" layer over filter fabric
PLNT	Planting Soil		c.y.	
TRDA	Tripsacum dachtyloides	8500	s.f.	solid sod
VAAN	Vallisneria spiralis		c.y.	3" layer over filter fabric
COQU	Coquina		c.y.	3" layer over filter fabric
PLNT	Planting Soil		c.y.	
TRDA	Tripsacum dachtyloides	8500	s.f.	solid sod
VAAN	Vallisneria spiralis		c.y.	3" layer over filter fabric
COQU	Coquina		c.y.	3" layer over filter fabric
PLNT	Planting Soil		c.y.	
TRDA	Tripsacum dachtyloides	8500	s.f.	solid sod
VAAN	Vallisneria spiralis		c.y.	3" layer over filter fabric
COQU	Coquina		c.y.	3" layer over filter fabric
PLNT	Planting Soil		c.y.	
TRDA	Tripsacum dachtyloides	8500	s.f.	solid sod
VAAN	Vallisneria spiralis		c.y.	3" layer over filter fabric
COQU	Coquina		c.y.	3" layer over filter fabric
PLNT	Planting Soil		c.y.	
TRDA	Tripsacum dachtyloides	8500	s.f.	solid sod
VAAN	Vallisneria spiralis		c.y.	3" layer over filter fabric
COQU	Coquina		c.y.	3" layer over filter fabric
PLNT	Planting Soil		c.y.	
TRDA	Tripsacum dachtyloides	8500	s.f.	solid sod
VAAN	Vallisneria spiralis		c.y.	3" layer over filter fabric
COQU	Coquina		c.y.	3" layer over filter fabric
PLNT	Planting Soil		c.y.	
TRDA	Tripsacum dachtyloides	8500	s.f.	solid sod
VAAN	Vallisneria spiralis		c.y.	3" layer over filter fabric
COQU	Coquina		c.y.	3" layer over filter fabric
PLNT	Planting Soil		c.y.	
TRDA	Tripsacum dachtyloides	8500	s.f.	solid sod
VAAN	Vallisneria spiralis		c.y.	3" layer over filter fabric
COQU	Coquina		c.y.	3" layer over filter fabric
PLNT	Planting Soil		c.y.	
TRDA	Tripsacum dachtyloides	8500	s.f.	solid sod
VAAN	Vallisneria spiralis		c.y.	3" layer over filter fabric
COQU	Coquina		c.y.	3" layer over filter fabric
PLNT	Planting Soil		c.y.	
TRDA	Tripsacum dachtyloides	8500	s.f.	solid sod
VAAN	Vallisneria spiralis		c.y.	3" layer over filter fabric
COQU	Coquina		c.y.	3" layer over filter fabric
PLNT	Planting Soil		c.y.	
TRDA	Tripsacum dachtyloides	8500	s.f.	solid sod
VAAN	Vallisneria spiralis		c.y.	3" layer over filter fabric
COQU	Coquina		c.y.	3" layer over filter fabric
PLNT	Planting Soil		c.y.	
TRDA	Tripsacum dachtyloides	8500	s.f.	solid sod
VAAN	Vallisneria spiralis		c.y.	3" layer over filter fabric
COQU	Coquina		c.y.	3" layer over filter fabric
PLNT	Planting Soil		c.y.	
TRDA	Tripsacum dachtyloides	8500	s.f.	solid sod
VAAN	Vallisneria spiralis		c.y.	3" layer over filter fabric
COQU	Coquina		c.y.	3" layer over filter fabric
PLNT	Planting Soil		c.y.	
TRDA	Tripsacum dachtyloides	8500	s.f.	solid sod
VAAN	Vallisneria spiralis		c.y.	3" layer over filter fabric
COQU	Coquina		c.y.	3" layer over filter fabric
PLNT	Planting Soil		c.y.	
TRDA	Tripsacum dachtyloides	8500	s.f.	solid sod
VAAN	Vallisneria spiralis		c.y.	3" layer over filter fabric
COQU	Coquina		c.y.	3" layer over filter fabric
PLNT	Planting Soil		c.y.	
TRDA	Tripsacum dachtyloides	8500	s.f.	solid sod
VAAN	Vallisneria spiralis		c.y.	3" layer over filter fabric
COQU	Coquina		c.y.	3" layer over filter fabric
PLNT	Planting Soil		c.y.	
TRDA	Tripsacum dachtyloides	8500	s.f.	solid sod
VAAN	Vallisneria spiralis		c.y.	3" layer over filter fabric
COQU	Coquina		c.y.	3" layer over filter fabric
PLNT	Planting Soil		c.y.	
TRDA	Tripsacum dachtyloides	8500	s.f.	solid sod
VAAN	Vallisneria spiralis		c.y.	3" layer over filter fabric
COQU	Coquina		c.y.	3" layer over filter fabric
PLNT	Planting Soil		c.y.	
TRDA	Tripsacum dachtyloides	8500	s.f.	solid sod
VAAN	Vallisneria spiralis		c.y.	3" layer over filter fabric
COQU	Coquina		c.y.	3" layer over filter fabric
PLNT	Planting Soil		c.y.	
TRDA	Tripsacum dachtyloides	8500	s.f.	solid sod
VAAN	Vallisneria spiralis		c.y.	3" layer over filter fabric
COQU	Coquina		c.y.	3" layer over filter fabric
PLNT	Planting Soil		c.y.	
TRDA	Tripsacum dachtyloides	8500	s.f.	solid sod
VAAN	Vallisneria spiralis		c.y.	3" layer over filter fabric
COQU	Coquina		c.y.	3" layer over filter fabric
PLNT	Planting Soil		c.y.	
TRDA	Tripsacum dachtyloides	8500	s.f.	solid sod
VAAN	Vallisneria spiralis		c.y.	3" layer over filter fabric
COQU	Coquina		c.y.	3" layer over filter fabric
PLNT	Planting Soil		c.y.	
TRDA	Tripsacum dachtyloides	8500	s.f.	solid sod
VAAN	Vallisneria spiralis		c.y.	3" layer over filter fabric
COQU	Coquina		c.y.	3" layer over filter fabric
PLNT	Planting Soil		c.y.	
TRDA	Tripsacum dachtyloides	8500	s.f.	solid sod
VAAN	Vallisneria spiralis		c.y.	3" layer over filter fabric
COQU	Coquina		c.y.	3" layer over filter fabric
PLNT	Planting Soil		c.y.	
TRDA	Tripsacum dachtyloides	8500	s.f.	solid sod
VAAN	Vallisneria spiralis		c.y.	3" layer over filter fabric
COQU	Coquina		c.y.	3" layer over filter fabric
PLNT	Planting Soil		c.y.	
TRDA	Tripsacum dachtyloides	8500	s.f.	solid sod
VAAN	Vallisneria spiralis		c.y.	3" layer over filter fabric
COQU	Coquina		c.y.	3" layer over filter fabric
PLNT	Planting Soil		c.y.	
TRDA	Tripsacum dachtyloides	8500	s.f.	solid sod
VAAN	Vallisneria spiralis		c.y.	3" layer over filter fabric
COQU	Coquina		c.y.	3" layer over filter fabric
PLNT	Planting Soil		c.y.	
TRDA	Tripsacum dachtyloides	8500	s.f.	solid sod
VAAN	Vallisneria spiralis		c.y.	3" layer over filter fabric
COQU	Coquina		c.y.	3" layer over filter fabric
PLNT	Planting Soil		c.y.	
TRDA	Tripsacum dachtyloides	8500	s.f.	solid sod
VAAN	Vallisneria spiralis		c.y.	3" layer over filter fabric
COQU	Coquina		c.y.	3" layer over filter fabric
PLNT	Planting Soil		c.y.	
TRDA	Tripsacum dachtyloides	8500	s.f.	solid sod
VAAN	Vallisneria spiralis		c.y.	3" layer over filter fabric
COQU	Coquina		c.y.	3" layer over filter fabric
PLNT	Planting Soil		c.y.	
TRDA	Tripsacum dachtyloides	8500	s.f.	solid sod
VAAN	Vallisneria spiralis		c.y.	3" layer over filter fabric
COQU	Coquina		c.y.	3" layer over filter fabric
PLNT	Planting Soil		c.y.	
TRDA	Tripsacum dachtyloides	8500	s.f.	solid sod
VAAN	Vallisneria spiralis		c.y.	3" layer over filter fabric
COQU	Coquina		c.y.	3" layer over filter fabric
PLNT	Planting Soil		c.y.	
TRDA	Tripsacum dachtyloides	8500	s.f.	solid sod
VAAN	Vallisneria spiralis		c.y.	3" layer over filter fabric
COQU	Coquina		c.y.	3" layer over filter fabric
PLNT	Planting Soil		c.y.	
TRDA	Tripsacum dachtyloides	8500	s.f.	solid sod
VAAN	Vallisneria spiralis		c.y.	3" layer over filter fabric
COQU	Coquina		c.y.	3" layer over filter fabric
PLNT	Planting Soil		c.y.	
TRDA	Tripsacum dachtyloides	8500	s.f.	solid sod
VAAN	Vallisneria spiralis		c.y.	3" layer over filter fabric
COQU	Coquina		c.y.	3" layer over filter fabric
PLNT	Planting Soil		c.y.	
TRDA	Tripsacum dachtyloides	8500	s.f.	solid sod
VAAN	Vallisneria spiralis		c.y.	3" layer over filter fabric
COQU	Coquina		c.y.	3" layer over filter fabric
PLNT	Planting Soil		c.y.	
TRDA	Tripsacum dachtyloides	8500	s.f.	solid sod
VAAN	Vallisneria spiralis		c.y.	3" layer over filter fabric
COQU	Coquina		c.y.	3" layer over filter fabric
PLNT	Planting Soil		c.y.	
TRDA	Tripsacum dachtyloides	8500	s.f.	solid sod
VAAN	Vallisneria spiralis		c.y.	3" layer over filter fabric
COQU	Coquina		c.y.	3" layer over filter fabric
PLNT	Planting Soil		c.y.	
TRDA	Tripsacum dachtyloides	8500	s.f.	solid sod
VAAN	Vallisneria spiralis		c.y.	3" layer over filter fabric
COQU	Coquina		c.y.	3" layer over filter fabric
PLNT	Planting Soil		c.y.	
TRDA	Tripsacum dachtyloides	8500	s.f.	solid sod
VAAN	Vallisneria spiralis		c.y.	3" layer over filter fabric
COQU	Coquina		c.y.	3" layer over filter fabric
PLNT	Planting Soil		c.y.	
TRDA	Tripsacum dachtyloides	8500	s.f.	solid sod
VAAN	Vallisneria spiralis		c.y.	3" layer over filter fabric
COQU	Coquina		c.y.	3" layer over filter fabric
PLNT	Planting Soil		c.y.	
TRDA	Tripsacum dachtyloides	8500	s.f.	solid sod
VAAN	Vallisneria spiralis		c.y.	3" layer over filter fabric
COQU	Coquina		c.y.	3" layer over filter fabric
PLNT	Planting Soil		c.y.	
TRDA	Tripsacum dachtyloides	8500	s.f.	solid sod
VAAN	Vallisneria spiralis		c.y.	3" layer over filter fabric
COQU	Coquina		c.y.	3" layer over filter fabric
PLNT	Planting Soil		c.y.	
TRDA	Tripsacum dachtyloides	8500	s.f.	solid sod
VAAN	Vallisneria spiralis		c.y.	3" layer over filter fabric
COQU	Coquina		c.y.	3" layer over filter fabric
PLNT	Planting Soil		c.y.	
TRDA	Tripsacum dachtyloides	8500	s.f.	solid sod
VAAN	Vallisneria spiralis		c.y.	3" layer over filter fabric
COQU	Coquina		c.y.	3" layer over filter fabric
PLNT	Planting Soil		c.y.	

