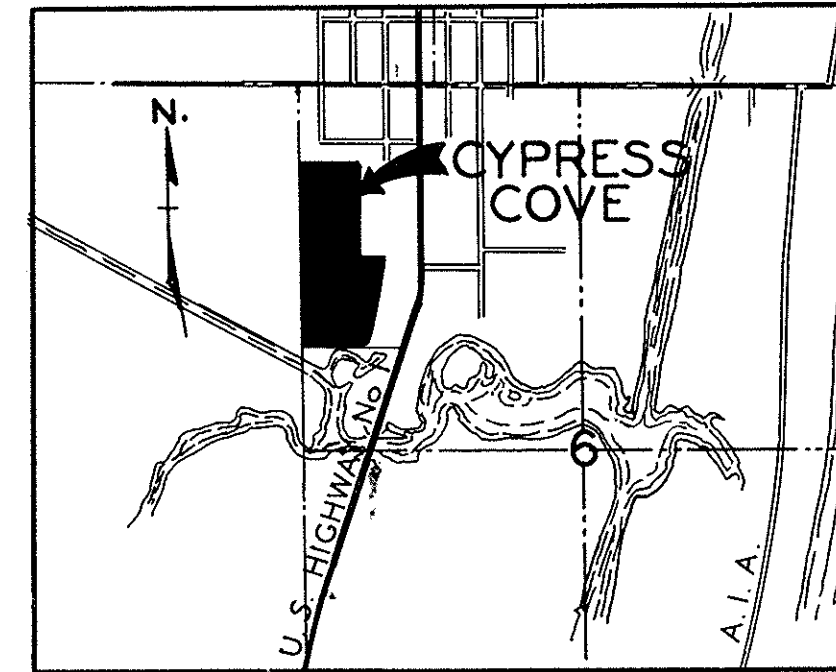
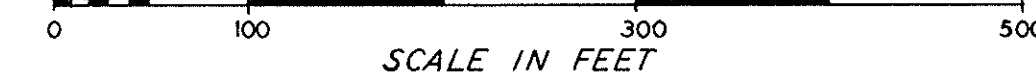


CYPRESS COVE

A SUBDIVISION IN SECTION 6, TOWNSHIP 49 SOUTH, RANGE 43 EAST
POMPAÑO BEACH • BROWARD COUNTY • FLORIDA

ARNOLD J. WALDSMITH - REGISTERED LAND SURVEYOR - FT. LAUDERDALE, FLORIDA.



LOCATION MAP

DESCRIPTION

The W 1/2 of Lots 9 and 10 in Block 4, and all that portion of Lots 13, 14 and 15 in Block 5, lying west of a line running through the center of the canal, which line on the north is 375 feet west of the west right-of-way line of Federal Highway U. S. No. 1 as now located and established, and said line on the south is 394.30 feet west of the west right-of-way line Federal Highway U. S. No. 1 as now located and established, all being in a subdivision of Section 6, Township 49 South, Range 43 East, according to the plat thereof, recorded in Plat Book "B" page 76 of the public records of Dade County, Florida.

DEDICATION

KNOW ALL MEN BY THESE PRESENTS : That the North Broward Land Co., Inc., a Florida corporation, owner of the lands described hereon, has caused the lands to be surveyed, subdivided, and platted as shown on the attached plat to be known as "CYPRESS COVE".....The Waterways, The Terrace, Avenues and Streets as shown on said plat are hereby dedicated to the perpetual use of the public for proper purposes....

In witness whereof the said North Broward Land Co., Inc., has caused these presents to be signed by its President and attested by its Secretary this 2nd day of FEB. A.D. 1957....

North Broward Land Co., Inc.
Witness Roy A. Gleason President Robert F. Sullivan
Witness John D. Knight Secretary Gerden Johnson

ACKNOWLEDGEMENT

STATE OF FLORIDA I hereby certify that on this day personally
COUNTY OF BROWARD ss appeared before me, an officer duly authorized
by Law to administer oaths and take acknowledgements, Robert F. Sullivan and
Gerden L. Johnson, to me known to be President and Secretary respectively of
North Broward Land Co., Inc., a Florida corporation, and they acknowledged to me
the execution of the foregoing instrument for the purposes therein expressed....
In witness whereof I have hereunto set my hand and seal this 2nd day of
FEB. A.D. 1957
My commission expires NOV. 16, 1959
G. Cawson
Notary Public - State of Florida

SURVEYOR'S CERTIFICATE

This is to certify that I, Arnold J. Waldsmith, a land surveyor duly registered in the State of Florida, have surveyed the land described and shown hereon and have set Permanent Reference Monuments (P.R.M.) as shown and that the survey and plat are correct to the best of my knowledge and belief....
Arnold J. Waldsmith
Registered Land Surveyor No. 677 State of Florida

COUNTY CLERK'S CERTIFICATE

This is to certify that this plat complies with the provisions of chapter 10275 (No. 253) Law of Florida, and was accepted for record by the Board of Commissioners of Broward County, Florida....
Attest: Frank H. Marks Clerk of Circuit Court by Madeline Tackman Deputy Clerk
This instrument was filed for record this 5th day of APRIL A.D. 1957 and recorded in Plat Book 43 at Page 24 Record-Verified.
Frank H. Marks Clerk of Circuit Court by Madeline Tackman Deputy Clerk

MORTGAGEE APPROVAL

This plat is hereby approved for record by the owner and holder of a mortgage on the property described hereon for the Milan Corporation.

John Bellomo Secretary John Bellomo President

CITY PLANNING & ZONING BOARD

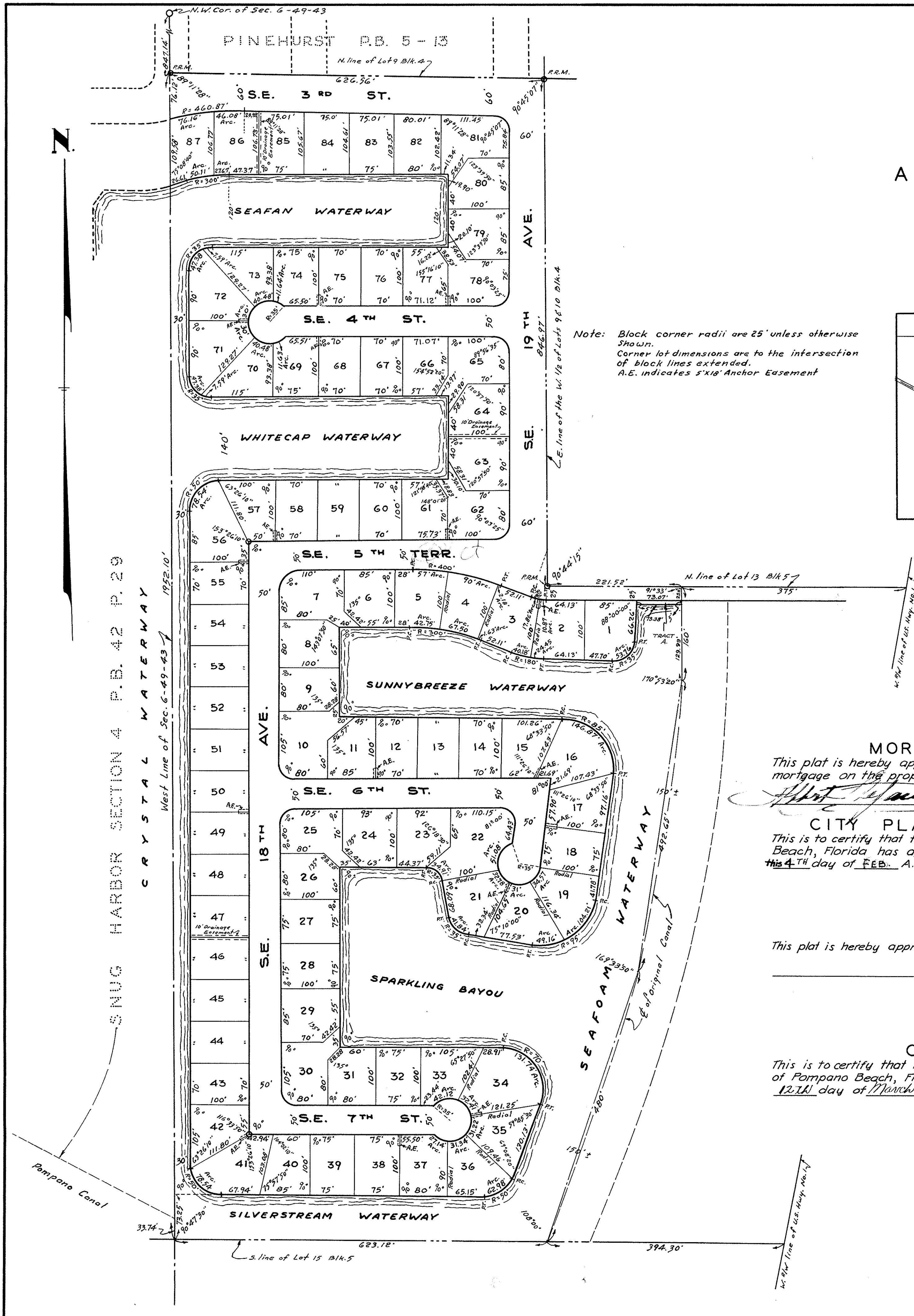
This is to certify that the City Planning and Zoning Board of Pompano Beach, Florida has approved and accepted this plat by recommendation this 4th day of FEB. A.D. 1957....
C. Crawford Spruce Chairman

COUNTY ENGINEER

This plat is hereby approved and accepted for record....
County Engineer

CITY COMMISSION

This is to certify that this plat was approved by the City Commission of Pompano Beach, Florida and passed by ordinance No. 632 this 12th day of March A.D. 1957
Winston J. Sharp
City Auditor and Clerk



Note: Block corner radii are 25' unless otherwise shown.
Corner lot dimensions are to the intersection of block lines extended.
A.E. indicates s'x'w' Anchor Easement

