



prepared by  
**McLAUGHLIN ENGINEERING COMPANY (LB#285)**  
1700 NW 64TH STREET, SUITE 400  
FORT LAUDERDALE, FLORIDA, 33309  
PHONE: (954) 763-7611  
FAX: (954) 763-7615  
GRAPHIC SCALE

# BOUNDARY & TOPOGRAPHIC SURVEY POMPANO PARK

SHEET 7 OF 14

THIS  
SHEET

3	4	5
6	7	8
9	10	11
12	13	14

LEGEND (IN FEET)  
1 inch = 60 ft

- ELEV. = ELEVATION
- O/S = OFFSET
- A/C = AIR CONDITIONING
- C = CENTERLINE OF RIGHT-OF-WAY
- F.P.L. = FLORIDA POWER AND LIGHT CO.
- S.B.T. = SOUTHERN BELL TELEPHONE
- B.C.R. = BROWARD COUNTY RECORDS
- D.C.R. = DADE COUNTY RECORDS
- P.B.R. = PALM BEACH COUNTY RECORDS
- O.R. = OFFICIAL RECORDS BOOK
- P.G. = PAGE
- R/W = RIGHT-OF-WAY
- W.L.P. = WOOD LIGHT POLE
- W.M. = WATER METER
- W.V. = WATER VALVE
- N/A = NOT ATTAINABLE
- F.H. = FIRE HYDRANT
- A.L.P. = ALUMINUM LIGHT POLE
- N.A. = NAIL IN ASPHALT
- ELEC. = ELECTRIC
- A = CENTRAL ANGLE (DELTA)
- R = RADIUS
- A OR L = ARC LENGTH
- CH.BRG. = CHORD BEARING
- TAN.BRG. = TANGENT BEARING
- P.O.C. = POINT OF COMMENCEMENT
- P.O.B. = POINT OF BEGINNING
- W/MCL CAP. = WITH McLAUGHLIN ENGINEERING CO. CAP
- P.R.M. = PERMANENT REFERENCE MONUMENT
- CONC. = CONCRETE
- C.B.S. = CONCRETE, BLOCK AND STUCCO
- S.B.T. & T. = SOUTHERN BELL TELEPHONE & TELEGRAPH
- W.V. = WATER VALVE
- N. = NORTH
- S. = SOUTH
- E. = EAST
- W. = WEST
- C.T.P. = CONCRETE TRAFFIC POLE
- F.O.C. = FIBER OPTIC CABLE
- I.C.V. = IRRIGATION CONTROL VALVE
- C.O. = CLEAN OUT
- CL.F. = CHAIN LINK FENCE
- P.C.D. = POLLUTION CONTROL DEVICE
- B.F.P. = BACK FLOW PREVENTOR
- W.L.P. = WOOD LIGHT POLE
- W.M. = WATER METER
- M.L.P. = METAL LIGHT POLE
- C.L.P. = CONCRETE LIGHT POLE
- L.F.F. = LOWEST FINISHED FLOOR
- CATCH BASIN
- CATCH BASIN INLET
- ALUMINUM LIGHT POLE
- CONCRETE LIGHT POLE
- WOOD LIGHT POLE
- LIGHT POLE
- CONCRETE TRAFFIC POLE
- WOOD POLE
- COMMUNICATIONS MANHOLE
- MANHOLE
- LIGHT BOX/HAND HOLE
- WATER VALVE
- WATER METER
- FIRE HYDRANT
- FIBER OPTIC CABLE
- CHAIN LINK FENCE
- WOOD FENCE
- OVERHEAD POWER & UTILITIES
- OVERHEAD UTILITY WIRES
- OVERHEAD GUY WIRES

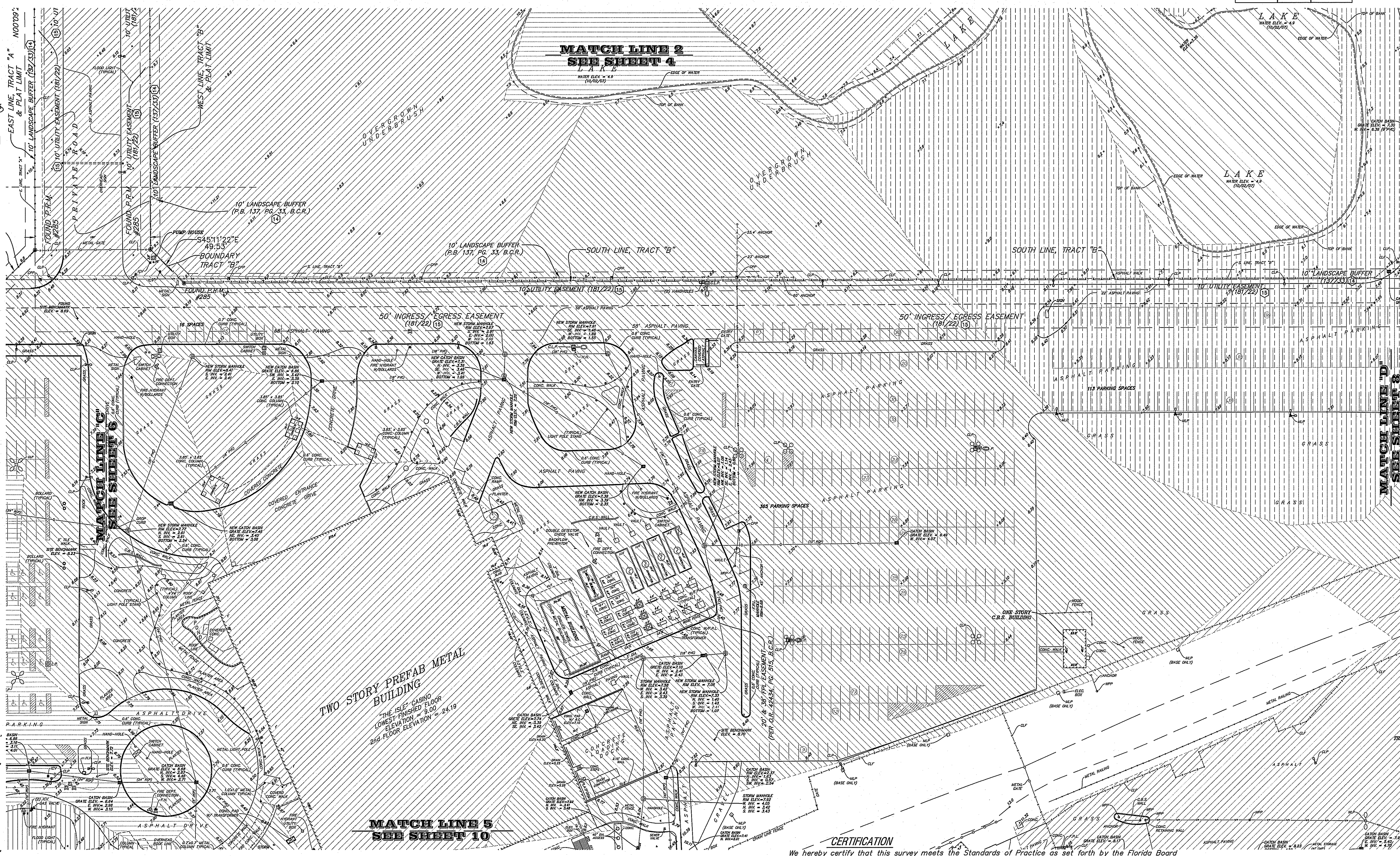
Indicates Topography taken.

## FLOOD ZONE LEGEND:

- = FLOOD ZONE "X" Minimal Chance of Flood Hazard
- = FLOOD ZONE "X" 0.2% Annual Chance of Flood Hazard
- = FLOOD ZONE "AH" Elevation=7.0'
- = FLOOD ZONE "AH" Elevation=8.0'
- = FLOOD ZONE "AH" Elevation=9.0'
- = FLOOD ZONE "AH" Elevation=10.0'
- = FLOOD ZONE "AH" Elevation=11.0'
- = FLOOD ZONE "AE" Elevation=8.0'
- = FLOOD ZONE "AE" Elevation=9.0'
- = FLOOD ZONE "AE" Elevation=10.0'

## OFFICE NOTES

FIELD BOOK NO. TDS w/Worksheets  
JOB ORDER NO. U-0393, U-3826, V-0537, V-3272  
CHECKED BY: E.W.J. DRP, RDR  
DRAWN BY: E.W.J. DRP, RDR



## CERTIFICATION

We hereby certify that this survey meets the Standards of Practice as set forth by the Florida Board of Professional Surveyors and Mappers in Chapter 5J-17.05 Florida Administrative Code, pursuant to Section 472.027, Florida Statutes.  
Dated at Fort Lauderdale, Florida, this 5th day of January, 2005.  
Additional Topography taken this 23rd day of March, 2006.  
Located temporary power poles this 21st day of September, 2006.  
Located top of bank and additional topography added this 3rd day of October, 2007.  
Additional topography and locations added this 27th day of December, 2007.  
Resurveyed and Elevations converted to NAVD 88, this 4th day of August, 2015.  
Resurveyed this 9th day of May, 2018.

McLAUGHLIN ENGINEERING COMPANY

JERALD A. McLAUGHLIN  
Registered Land Surveyor No. 5269  
State of Florida.

AAC  
15-3-031(15)  
PZ23-12000039  
02/06/2024