

1-2-63



22-05

3-49-42





1-21-69

49-1412



1 - 29 - 71

BROWARD COUNTY, FLORIDA

SCALE 1" = 300'

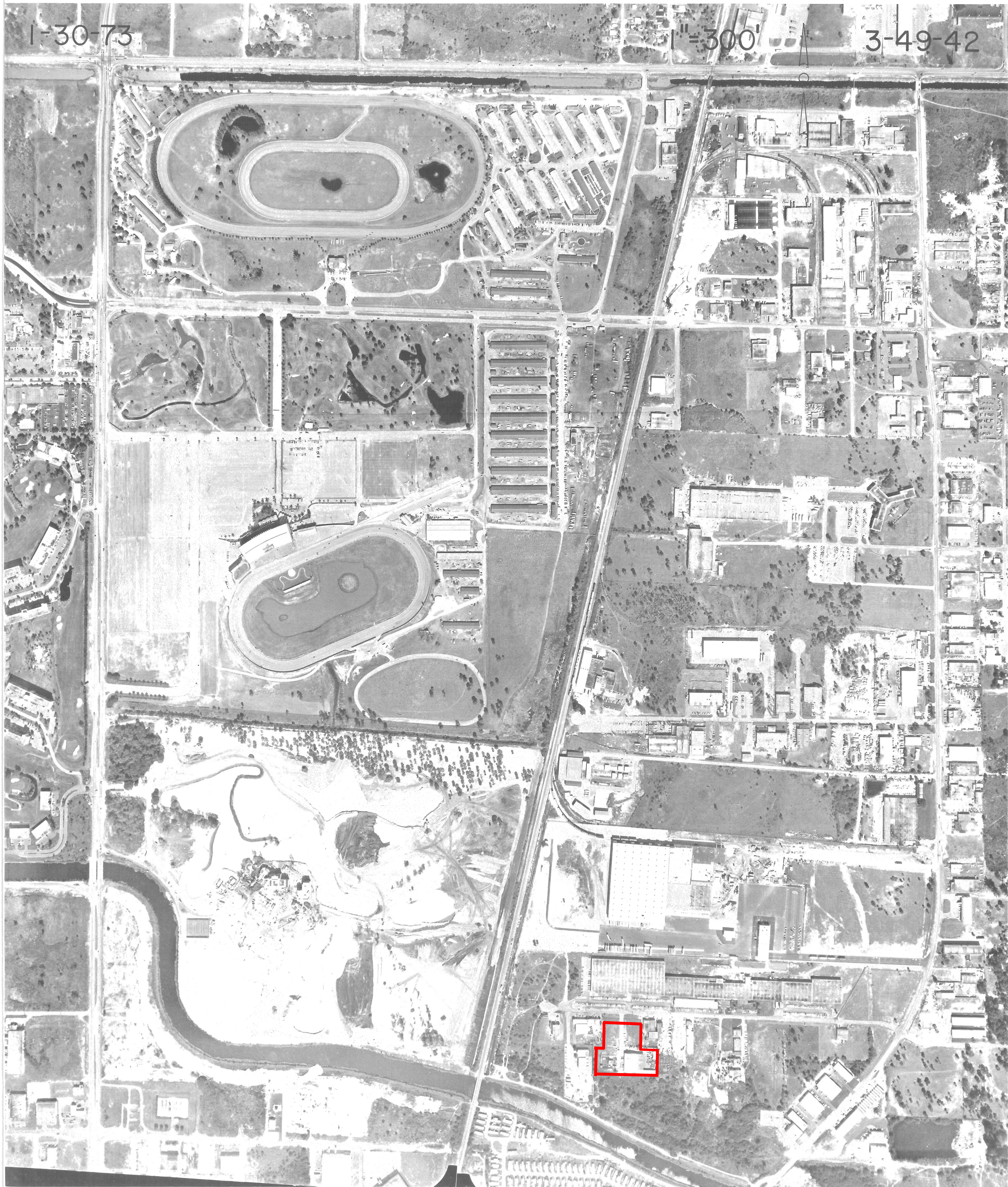
3 - 49 - 42



1-30-73

1"=300'

3-49-42

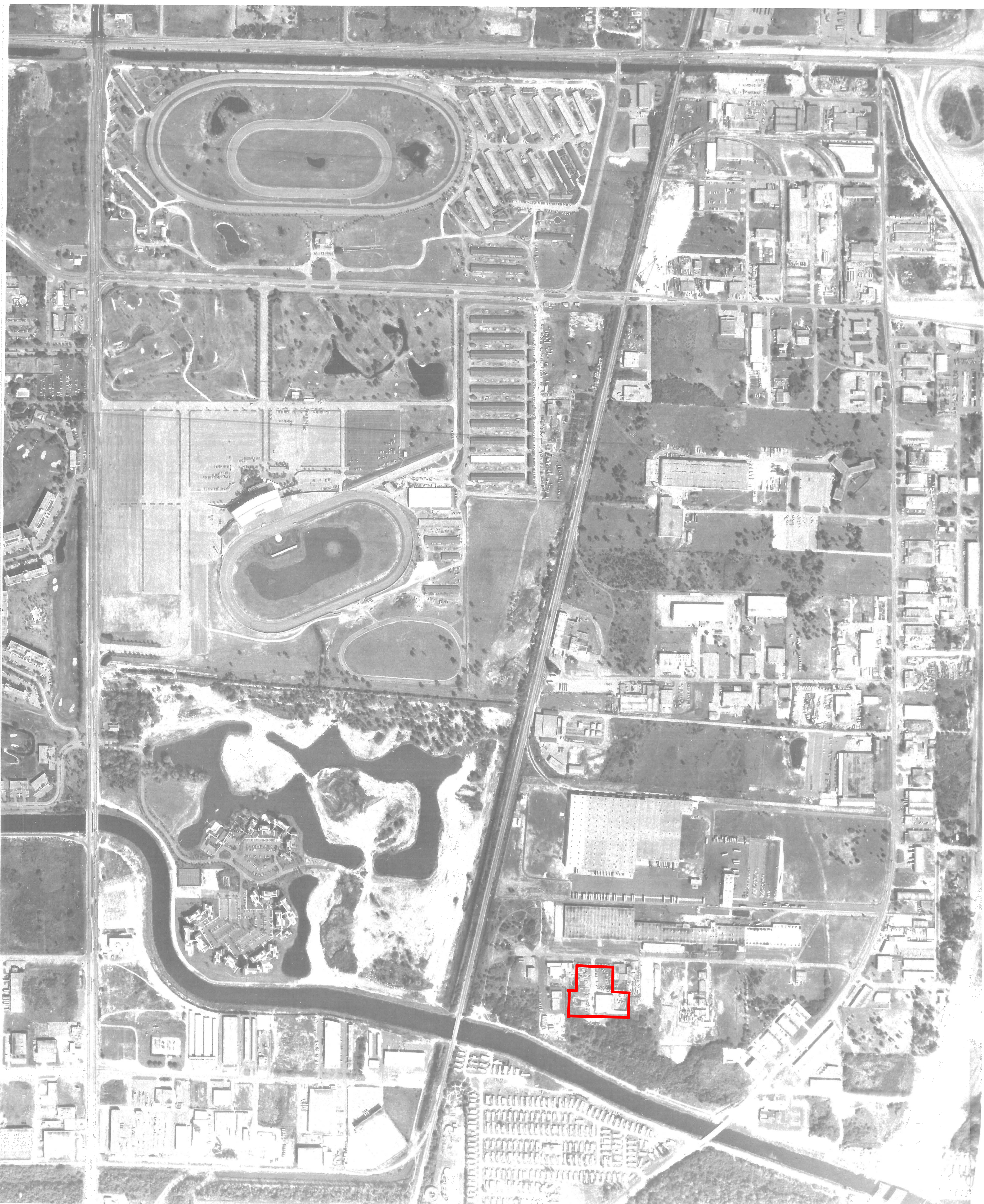


2-11-74

300'

3-49-42





1 1975

DATE FLOWN
1.23.76

3.49.42



1"=300'



DATE FLOWN
12.28.77

BROWARD COUNTY

3.49.42



1"=300'



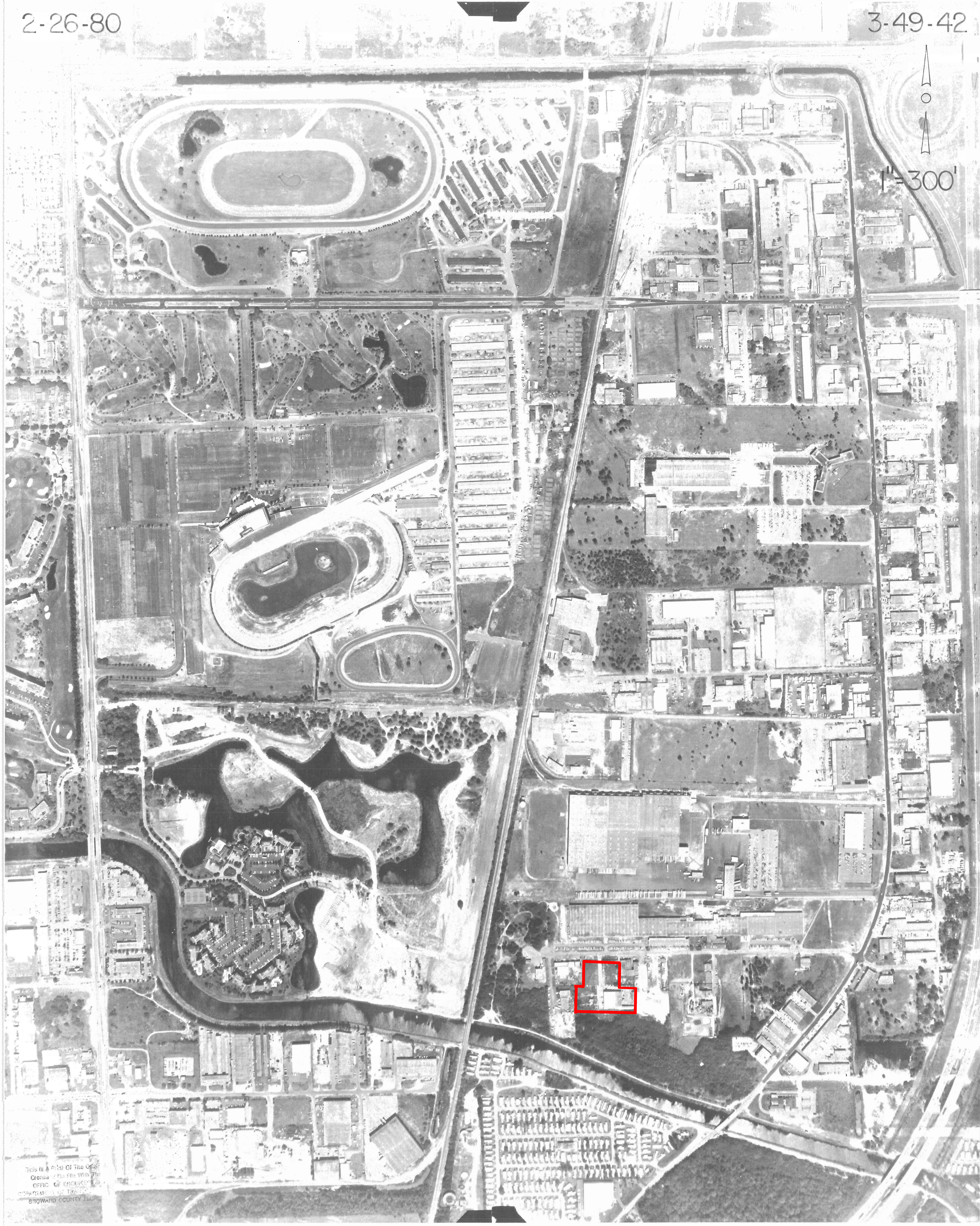
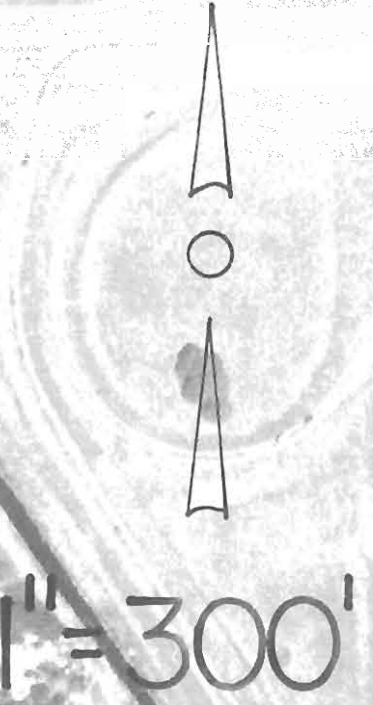
This is a Print of the Original
Cronaflex On File With The
OFFICE OF ENGINEERING
DEPARTMENT OF TRANSPORTATION
BROWARD COUNTY, FLORIDA

Bosworth Aerial Surveys, Inc.

IT IS INTENDED THAT THIS MAPPING COMPLY WITH U.S.
NATIONAL MAP ACCURACY STANDARDS. HOWEVER,
SUCH ACCURACY, OR ANY OTHER LEVEL OF ACCURACY,
IS NOT GUARANTEED BY BOSWORTH AERIAL SURVEYS

2-26-80

3-49-42



This is a Plot Of The Official
Census - On File With The
OFFICE OF ENGINEERING
BROWARD COUNTY FLORIDA

INTERPOLATION OF COORDINATES TO THE NEAREST 0.1 FT. THE USER OF THIS DRAWING HAS
TO BE RESPONSIBLE FOR THE ACCURACY OF THE DATA AND THE RESULTS OF THE INTERPOLATION.

POINT	STATE PLANE COORDINATES		POINT	STATE PLANE COORDINATES	
	X	Y		X	Y
A	776514.25	687059.44	E	779705.87	685817.06
B	776638.62	683051.94	F	781487.44	684689.38
C	782179.56	683156.06	G	782269.00	687317.31
D	777823.00	686275.50	H	780116.50	687912.06



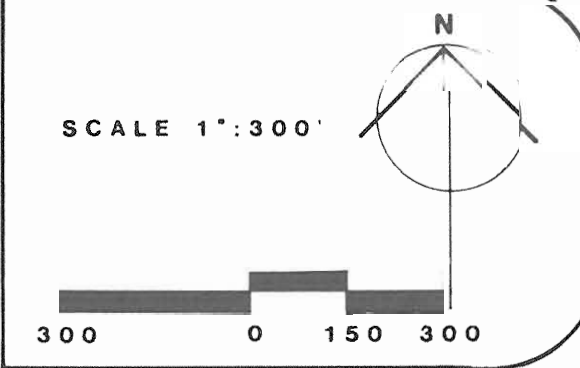
BROWARD COUNTY, FL.

3 49 42 SOUTH
SECTION TOWNSHIP RANGE

FLIGHT DATE: MARCH, 1984
BY BOSWORTH AERIAL SURVEYS INC. - LAKE WORTH, FL.

33-48-42	34-48-42	35-48-42
4-49-42	THIS SHEET	2-49-42
9-49-42	10-49-42	11-49-42

This is a copy of the original mylar on file with the Engineering Division, Public Works Department, Broward County, Florida.
Permission to copy this photograph is granted provided that the copies are not made or reduplicated for distribution for direct commercial advantage and that the entire title block appear on all copies. To copy or redistribute otherwise requires a fee and/or the specific permission of the Broward County Office of Planning.
Broward County makes no claim or guarantee regarding the accuracy of any copies.



REPRODUCTION OF THIS AERIAL PHOTOGRAPH IS PROHIBITED WITHOUT THE WRITTEN PERMISSION OF THE BROWARD COUNTY ENGINEERING DIVISION, PUBLIC WORKS DEPARTMENT.



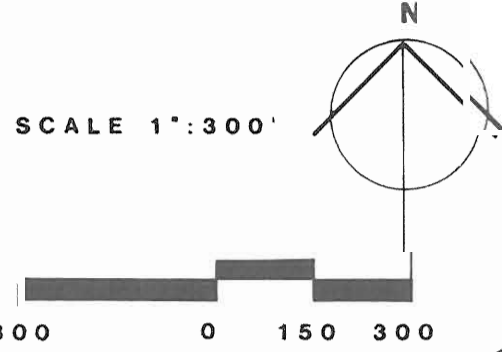
BROWARD COUNTY, FL.

3 49 42 south

SECTION TOWNSHIP RANGE FLIGHT DATE: APRIL, 1977 BY BOSWORTH AERIAL SURVEYS INC. - LAKE WORTH, FL.

THIS
SHEET

This is a copy of the original mylar on file with the Engineering Division, Public Works Department, Broward County, Florida. Permission to copy this photograph is granted provided that the copies are not made or reduplicated for distribution for direct commercial advantage and that the entire title block appear on all copies. To copy or redistribute otherwise requires a fee and/or the specific permission of the Broward County. Broward County makes no claim or guarantee regarding the accuracy of any copies.





BROWARD COUNTY, FL.

3 49 42S 2-5-90
SECTION TOWNSHIP RANGE DATE OF FLIGHT

PAN AMERICAN SURVEYS INC. MIAMI, FL.

THIS IS A COPY OF THE ORIGINAL AERIAL PHOTOGRAPH AND THE ENGINEERING DIVISION, PUBLIC WORKS DEPARTMENT, BROWARD COUNTY, FLORIDA.
PERMISSION TO COPY THIS PHOTOGRAPH IS GRANTED, PROVIDING THAT THE COPIES ARE NOT MADE OR REDUCED FOR DIRECT COMMERCIAL ADVANTAGE, AND THAT THE ENTIRE TITLE BLOCK APPEARS ON ALL COPIES. TO COPY OR OTHERWISE REDISTRIBUTE REQUIRES A FEE AND/OR THE SPECIFIC PERMISSION OF THE BROWARD CO. OFFICE OF PLANNING.
BROWARD COUNTY MAKES NO CLAIM OR GUARANTEE REGARDING THE ACCURACY OF ANY COPIES.



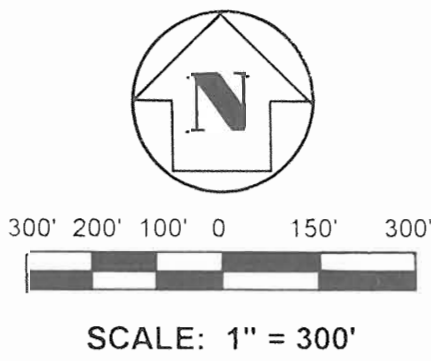
SCALE: 1" = 300'

This is a copy of the original mylar on file with the Engineering Division, Public Works Department, Broward County, Florida.

Permission to copy this photograph is granted, providing that the copies are not made or reduplicated for distribution for direct commercial advantage, and that the entire title block appears on all copies. To copy or otherwise redistribute requires a fee and/or the specific permission of Broward Co.

Broward County makes no claim or guarantee regarding the accuracy of any copies.

T 49 S - R 42 E		
33	34	35
4	THIS SHEET	2
9	10	11



BY: KUCERA SOUTH, INC. - LAKELAND, FLORIDA

BROWARD COUNTY, FL.

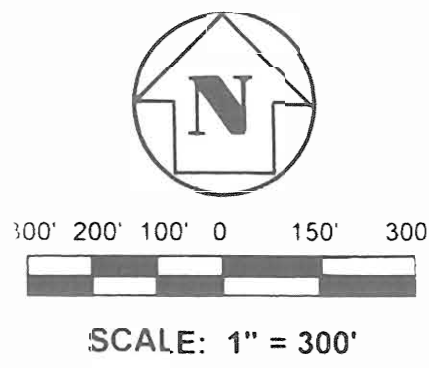
DATE OF FLIGHT:	SECTION	TOWNSHIP	RANGE
JAN. 26, 1995	3	49	42
	SOUTH		



This is a copy of the original mylar on file with the Engineering Division, Public Works Department, Broward County, Florida.

Permission to copy this photograph is granted, providing that the copies are not made or reduplicated for distribution for direct commercial advantage, and that the entire title block appears on all copies. To copy or otherwise redistribute requires a fee and/or the specific permission of Broward Co.

Broward County makes no claim or guarantee regarding the accuracy of any copies.



BROWARD COUNTY, FL.

DATE OF FLIGHT :

SECTION

TOWNSHIP

RANGE

JAN. 21, 2000

03

49S

42E

SOUTH

BY: 3Di FLORIDA, LLC. HOLLY HILL, FL

