

**730 LAKE DRIVE
ISSAQUAH, WA 98027
T: 425.313.8100
www.costco.com**

ARCHITECTURE	CIVIL ENGINEERING
PLANNING	BRANDING
INTERIORS	BUILDING MEASUREMENT

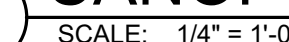
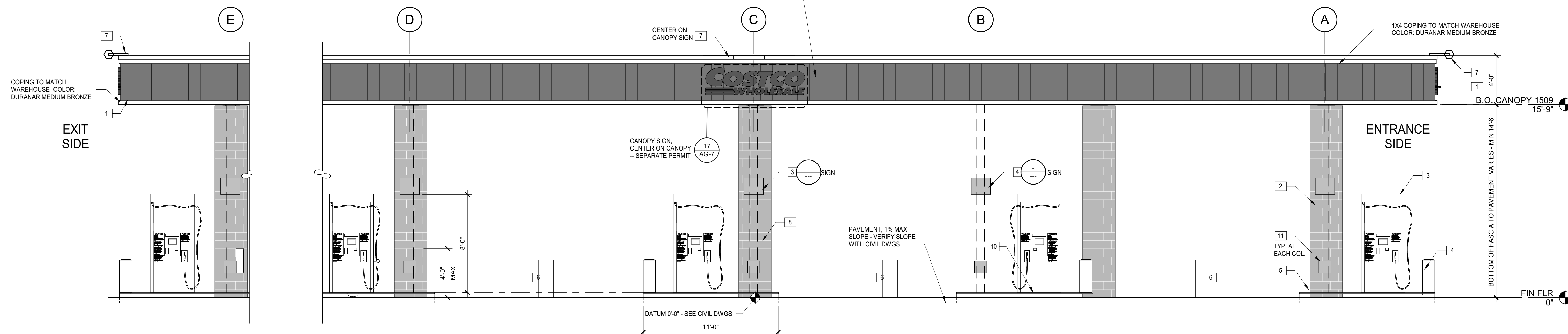
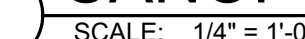
900 S Broadway, Suite #320
Denver, CO, 80209
P 720.488.2626

POMPANO BEACH, FL

[illegible]

MIA24-0051-00
PM: J. ZAPATA
DRAWN BY: C

AG-2



KEYNOTES		
1	PRE-FINISHED METAL, FACIAS PANEL, COLOR METALLIC CHAMPAGNE - SUPPLIED AND INSTALLED BY CANOPY/SUPPLIER UNDER SEPARATE CONTRACT	
2	12" x 8" x 16" SPLIT FACE COLUMN WRAP - SEE STRUCT DWGS - SUPPLIED AND INSTALLED BY CANOPY/SUPPLIER UNDER SEPARATE CONTRACT	
3	ACCESSIBLE MULTIPRODUCT DISPENSER	
4	CONCRETE-FILLED METAL FORMED GUARD AT ENDS OF ISLANDS - TOP OF GUARD AT 30" ABOVE TRAFFIC SURFACE - PAINT SIDES ONLY WITH GLOSS BLUE, REFER TO SPECIFICATION	
5	RAISED CONCRETE ISLAND WITH METAL EDGE FORM - PAINT SIDES ONLY WITH GLOSS BLACK, REFER TO SPECIFICATION	
6	WASTE RECEPTOR, BOLT DOWN, CENTER OF EACH ISLAND (SOIC)	
7	CANOPY FACIAS SIGN LIGHT FIXTURE (SOIC) - REFER TO DETAIL 16 / AG-3	
8	FIRE EXTINGUISHER AND CABINETS MOUNTED ON COLUMN SIDE AWAY FROM DISPENSER - FIRE EXTINGUISHER CABINET TO BE: BROOKS MODEL # MARK 1, RED CABINET WITH CLEAR COVER (OR EQUAL) - FIRE EXTINGUISHER FROM CABINET - BY GC	
9	VIDEO CAMERA - VERIFY LOCATION WITH OWNER CONSTRUCTION PROJECT MANAGER. GC SHALL RUN CONDUIT AND INSTALL 3" ROUND OR OCTAGONAL J-BOX FOR MOUNTING CAMERAS - SEE ELECTRICAL DRAWINGS	
10	CAULK PERIMETER OF DISPENSER BASE WITH PETROLEUM RESISTANT SEALANT - SEE T-DWGS, TYPICAL	
11	12" x 12" ELECTRICAL ACCESS PANELS, SUPPLIED BY SPAN	
12	NOT USED	
GENERAL NOTES		
A. SEE ENLARGED SITE PLAN FOR ADDITIONAL GENERAL NOTES AND ADDITIONAL DETAIL REFERENCES.		
SOIC - FUEL FACILITY SIGNAGE		
QTY	DESCRIPTION	TYPICAL PLACEMENT
1	MEMBERS ONLY / ENTER HERE WITH COSTCO LOGO 18" x 24" ALUMINUM	METAL POST EACH SIDE ON ENTRANCE(S) DETAIL 5AG-7
3	NO SMOKING / STOP ENGINE 18" x 22" ALUMINUM	AT ENTRY AND EXIT COLUMNS - FLUSH MOUNT ON COLUMNS SEE SITE PLAN
4	IN CASE OF FIRE OR SPILL 18" x 22" ALUMINUM	AT CENTER COLUMNS - FLUSH MOUNT ALL SIDES OF COLUMN SEE SITE PLAN
5	IN CASE OF FIRE OR SPILL 18" x 24" ALUMINUM, ONE SIDE	MOUNT ON CONTROLLER ENCLOSURE NEXT TO EMERGENCY PHONE, VISIBLE FROM THE PUMPS
6	NO CASH ON PREMISES VINYL	MOUNT ON CONTROLLER ENCLOSURE, NEAR DOOR
7	EMERGENCY SHUT-OFF	ABOVE EMERGENCY SHUT-OFF ON ENCLOSURE - SEE 4A-G-5, BELOW EMERGENCY SHUT-OFF - SEE 1H
8	RED/DO NOT ENTER 24" x 24" x 1/4" ALUMINUM	METAL POST EACH SIDE OF EXIT - SEE DETAIL 5AG-7