

Design concept for the columns at MLK Drive underpass

Prepared by Sonata Kazimieraitiene, Mosaic Team III Lead Artist

I have developed a design based on the patterns of ethnic textiles and quilts, which will symbolize Pompano Beach as a tightly woven community. Additionally, I am using South Florida's nature color palette to remind us that nature is our home where everybody is welcome to enjoy it. These designs represent the idea of the mural/mosaic serving as a gateway between the East and West side of the city.

My feeling is that having a bold and more abstract/conceptual design is more appropriate for the underpass area. I envision columns painted in green transitioning into blue, resembling an aerial view of the ocean and Everglades/agricultural area. Afterward, adding orange, purple, and yellow blocks of color to represent residential areas and developments. The darker colored blocks will have geometrical and abstract ethnic patterns that will be based on mosaics created simultaneously. I plan to use stamping and stenciling techniques to imitate mosaic patterns, giving the mural a multidimensional effect. This will symbolize the overlapping of nature with civilization and culture.

The choice of color combinations inspired by ethnic patterns adds cultural richness to the piece and provides a connection to different communities and backgrounds, making the artwork inclusive and relatable to a wide audience. Additionally, the reference to traditional quilt patterns is a nod to the cultural and personal histories that often go into creating quilts, making the piece personal and meaningful to those who view it.

To emphasize the idea of the artwork being a gateway piece connecting two sides of the community, the West and the East, the patterns are designed in such a way that they flow seamlessly from one side of the artwork to the other, symbolizing the connection between the two sides. This will be achieved by using a continuous line or series of shapes that run through the entire piece, tying it together. The painted areas on the columns serve as a visual representation of the transition from the blue color of the ocean side to the green color of the agricultural west side of town. This is a creative way to emphasize the connection and interdependence between the different neighborhoods in the area.

The mosaic tiles will be a beautiful addition to the sidewalk, with 100 glass tile mosaics each measuring 1 square foot. These mosaics will be inlaid into both sides of the underpass, adding a unique and colorful element to the area. The apprentices will have the opportunity to create 20 mosaics each, based on ethnic patterns and within an approved color palette range. The mosaic designs will gradually transition from blue on the East side of the underpass to green on the West side, symbolizing the agricultural area of the town. In addition to the blue and green colors, there will also be some warmer tone tiles incorporated into the mosaic design. These tiles will feature shades of orange, pink, purple, and yellow, and will relate to the ethnic patterns of textiles from different cultures residing in Pompano Beach. This will add even more depth and vibrancy to the sidewalk and help to showcase the diverse and multicultural community that makes up the town.

Additionally, the use of ethnic patterns from various cultures in both the painted areas and the mosaic elements represents the diversity and unity of the community, highlighting the idea of different cultures coming together to form a harmonious whole. The interplay of different patterns and textures in the piece is a metaphor for the diverse experiences and perspectives that make up a community creating a rich tapestry of experiences.

SCOPE OF WORK:

The artwork will consist of two parts: a painted mural and mosaics. The painted mural will be installed on both sides of the overpass columns under Interstate 95 (I-95), which overlooks Dr. Martin L. King, Jr. Boulevard, as illustrated in the image below. The mosaics will be placed on the sidewalk on both sides of the underpass, as indicated on the map. The mosaics will be integrated into the sidewalk, adding to the overall aesthetic of the area. By combining these two mediums, the artwork will serve to connect the east and west sides of town, creating a cohesive and visually appealing environment.



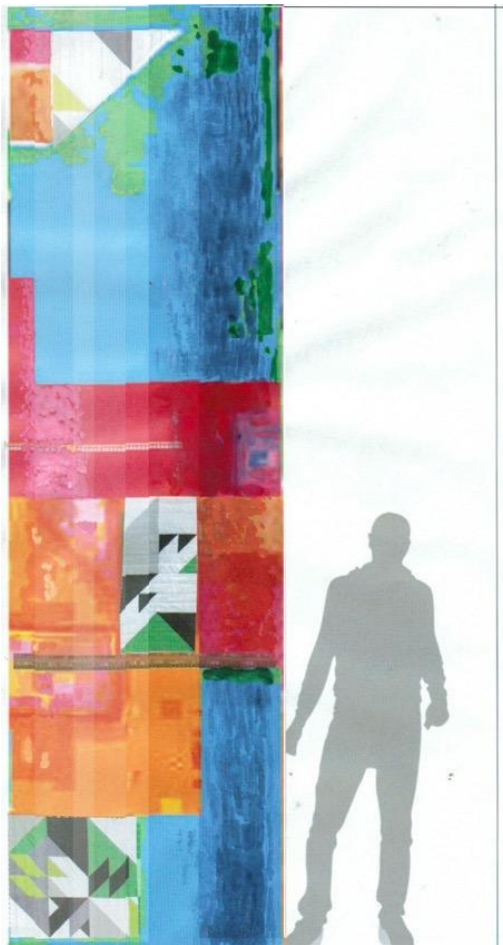
Painted mural location

Total columns in the underpass: 27

Each column measurements: 14' height x 3'7" diameter (C 11'2")

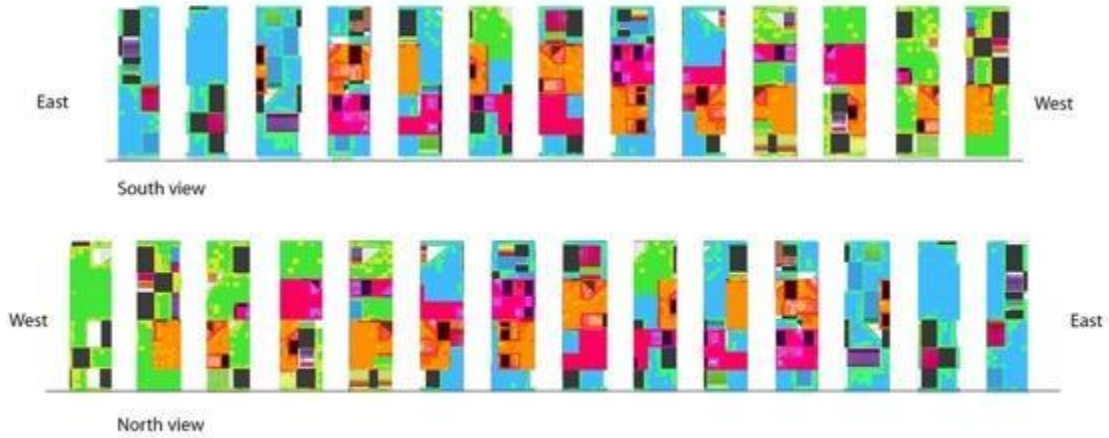
1 column - 156 sf

27 columns - 4,212 sf



168"

Detailed painted mural design for the MLK Drive Underpass in Pompano Beach, FL
2023



MATERIALS

Painted mural area : 4,212

NOVA
COLOR
Artists Acrylic Paint



NOVA Color professional paint for murals



ARTEX MANUFACTURING COMPANY

5894 Blackwelder St. Culver City, CA 90232
Telephone 310 204-6900
Open Monday-Friday 8:30-4:30 Pacific Time
Order Online <https://novacolorpaint.com>

Nova Color Artists' Acrylic Paint & Mediums

General Description: Water-based 100% acrylic polymer medium.

General Use: Nova Color Artists' Acrylic products are suitable for use on canvas, paper, fabric, wood, plaster, masonry, fiberglass, many leathers and most non-slick, non-oily surfaces. Nova Color Artists' Acrylic Paint is water-soluble when wet; dries permanent and water resistant. Not for use underwater. Thins with water.

Overthinning may result in poor adhesion or cloudiness. Nova Color Artists' Acrylic Paint can be mixed with most water-based paint and water-based tints. Nova Color Artists' Acrylic Paint is a heavy, creamy fluid with satin to semi-gloss sheen. Consistency and gloss vary by pigment and product.

Surface Preparation: The surface to be painted should be clean and free from oil, silicon residue, dust or loose paint. Nova Color Artists' Acrylic Paint may raise the grain on bare wood. Surfaces previously painted with oil paint or solvent paint must be thoroughly cured and sanded. Plaster, stucco and concrete should be thoroughly cured. Do not mix with oil paint or solvent paint. Do not use acrylic paint over an oil-based paint or oil-based primer unless the manufacturer specifies that it is suitable for use with water-based paints. **To check adhesion,** apply a test patch and allow to dry for 36 hours. Check by scraping.

Spreading Rate: Paint coverage varies depending on the absorbency of the surface and the method of application. Raw canvas, stucco, cement and rough wood will get low coverage. Gessoed and previously painted surfaces will get high coverage. Theoretical spreading rate @ 1 mil dry film thickness is 600 square feet per gallon.

Approximate coverage: Gallon covers 240-320 square feet. Quart covers 60-80 square feet. Pint covers 30-40 square feet. Allow extra paint when mixing colors.

Hide: Degree of hiding power depends on the pigment used. Colors may be opaque, translucent or transparent. Check opacity chart.

Drying Time: Air dry @ 70 degrees F @ 50% R.H. Dry to touch: 1/2 - 1 hour. Dry to recoat: 3 hours minimum.

Application: Apply between 65 to 85 degrees F. Do not apply outdoors during rain, fog or freezing temperatures or at dusk shortly before these conditions occur. Moist or cold conditions may result in cracking or poor paint film formation.

Apply varnishes with care using quick smooth brushstrokes. Do not agitate, brush excessively or brush after the film has begun to dry. If applied by roller, use a short nap roller and check to be sure no foam is created. Clean up with soap and water. Do not allow paint to dry on brushes or tools.

Application Methods: *Brush:* No reduction necessary. *Roller:* Up to 10% reduction with water if necessary. *Spray:* Air sprayer--reduce 20%-25% with water. Airless sprayer--no reduction necessary; .013"-.016" tip @ approx. 2,000 PSI. To check adhesion, apply a test patch and allow to dry for 36 hours. Check by scraping.

Department of Transportation (DOT): Freight class 55. Water-based. Not regulated.

% Nonvolatile (Solids): By weight: 33.7-60.5% By volume: 27.2-43.2%.

Volatile Organic Compounds (V.O.C.): Nova Color is in compliance with SCAQMD Rule 1113 for a graphic arts coating. A list showing V.O.C. for each product is available.

Lightfastness rating according to the American Society for Testing and Materials

D5098 Test Methods for Lightfastness of Pigments used in Artists Paint:

I=Excellent II=Very Good III=Does not conform to ASTM D5098

Ratings are based on the color at full strength. Some colors may be less lightfast when used as a tint (mixed with white or other colors) or if used as a glaze (mixed with clear mediums). See "*Mural Painting! Tips for Exterior Mural Painting!*" for recommended exterior colors.

Nova Color has been reviewed by a toxicologist and conforms to federal labeling requirements for art materials. CONFORMS WITH ASTM D4236

Additional Information is available online at: <https://novacolorpaint.com>

Questions & Answers about Nova Color Artists' Acrylic Paint

What is the consistency of Nova Color paints? Nova Color has a heavy creamy consistency. Nova Color is more fluid than tube color or heavy body colors.

It is not as fluid as fluid colors or airbrush paint. Nova Color spreads beautifully, which is one of its popular features.

What is a medium? A medium is a fluid or paste that can be added to paint without decreasing its adhesion.

What is the difference between a gel and a texture paste? A gel dries clear and can be mixed with paint without altering the paint color. Gels are used to create impasto paints. Gels remain flexible. Texture paste is opaque and contains fillers that aid it in holding its shape. Texture paste is less flexible than gel. #202 White Texture Paste and #251 Lightweight Texture Paste are usually used to create texture in an underpainting. When mixed with paint, #202 White Texture Paste and #251 Lightweight Texture Paste create pastels. When mixed with paint, #218 Tintable Texture Paste creates a matte color with little color change.

Can I use Nova Color Artists' Acrylic Paint for an outdoor mural? Yes. Acrylic paint is excellent outdoors. See "*Mural Painting! Tips for Exterior Mural Painting!*".

Is Nova Color Artists' Acrylic Paint waterproof? Nova Color Artists' Acrylic Paint is water-resistant but it is not waterproof. Nova Color Artists' Acrylic Paint should not be used for underwater murals unless entirely sealed with a waterproof topcoat.

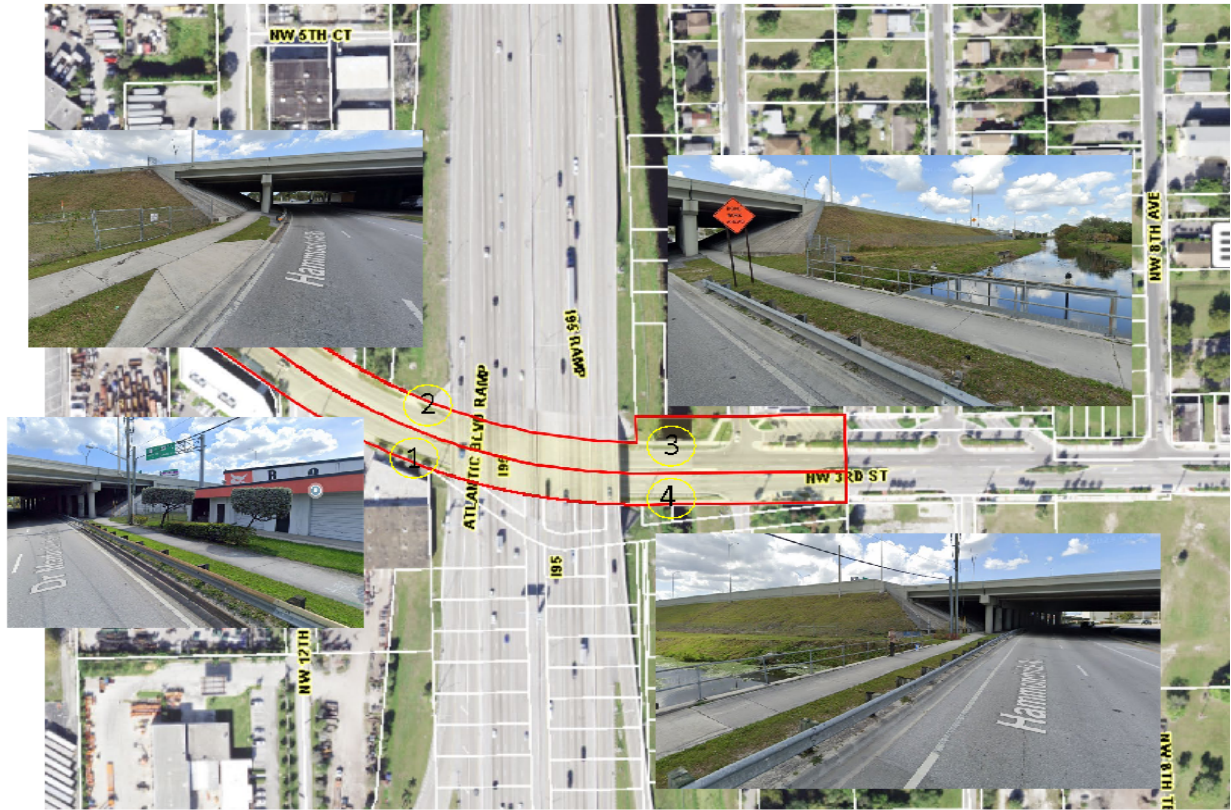
Retaining walls should be sealed on the opposite side with a waterproof sealer. Painted flowerpots should be sealed on the inside with a waterproof sealer. Nova Color Artists' Acrylic Paint cannot be used on top of a waterproof sealer.

Can I paint clothing and fabric with Nova Color Artists' Acrylic Paint? Yes. Nova Color Artists' Acrylic Paint adheres very well to cotton, silk, rayon and blends of these fibers. Paint will stiffen the fabric. Nova Color Flex Gel #213 was developed to make Nova Color Artists' Acrylic Paint feel softer on fabric. Adding water to the paint may cause the color to fade in washing. Nova Color Artists' Acrylic Paint is permanent when dry and does not need to be heat set. Hand wash and line dry painted fabrics. Let paint dry five days before the first laundering. Some dry cleaning solvents may affect the appearance or adhesion of acrylic paint. Nova Color Artists' Acrylic Paint can be mixed with most water-based fabric paints and fabric painting mediums.

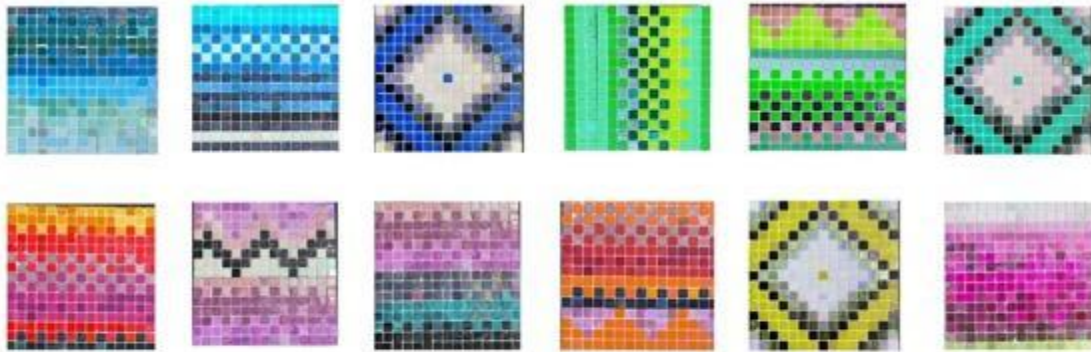
Can I paint Nova Color Artists' Acrylic Paint on glass? Nova Color Artists' Acrylic Paint will not adhere permanently to glass--it can be scraped off.

Can I paint Nova Color Artists' Acrylic Paint on metal? Nova Color Artists' Acrylic Paint may be applied to a properly primed metal. To clean bare metal, wash with vinegar and rinse. Thoroughly sand previously painted metal surfaces. Prime with a

MOSAICS LOCATION



Mosaic tile samples for the sidewalk on both sides of MLK underpass in Pompano Beach
Prepared by Sonata Kazimieraitiene
Mosaic Team III Lead Artist
04/16/2023



Proposed mosaic tile locations



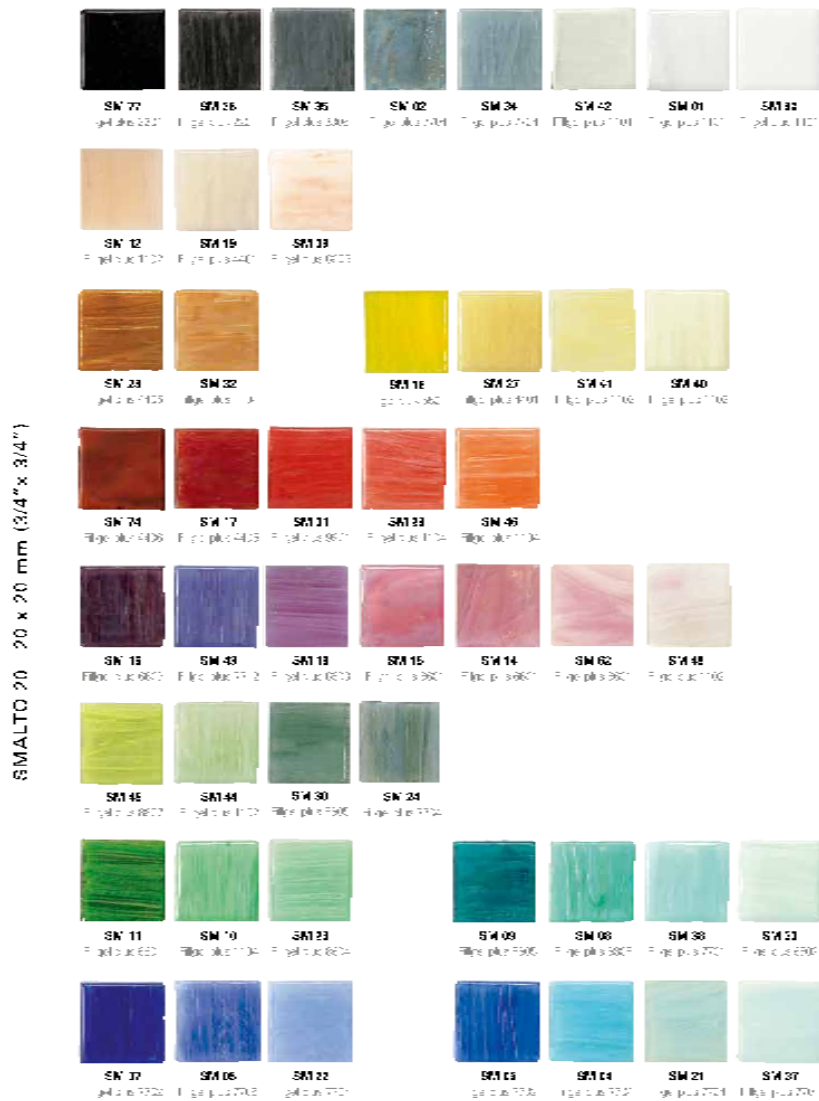
West Side



East Side



BISAZZA Glass mosaic, or glass and Aventurine mosaic, or glass and enamel mosaic, of square and beveled tesserae, facial dimensions 3/4" x 3/4", with a thickness of 5/32". It is paper face mounted or back mounted on mesh, with a joint of 1,57 mm (~1/16"). Overall sheet dimensions 322x322 mm (12 11/16"x12 11/16").



Unità d'ordine: 100 tessere (100x100 mm) - 100 tiles (100x100 mm) - 100 tesserae (100x100 mm) - 100 tiles (100x100 mm) - 100 tesserae (100x100 mm) - 100 tiles (100x100 mm)

Mosaic Installation materials:



Rapid Set Concrete Mix is a workable, fast setting, high quality concrete repair and concrete restoration material that is ideal where fast strength gain, high durability and low shrinkage are desired. Use Concrete Mix for repair and construction of pavements, sidewalks and steps, formed work, footings, setting posts, industrial floors, machine bases, concrete countertops and concrete repair. Concrete Mix sets in 15-minutes and is ready for traffic in 1-hour. Durable in wet environments, it can be applied from 2 in. to 24 in. thick. Concrete Mix is a high performance blend of Rapid Set hydraulic cement and quality aggregates. It is non-metallic and no chlorides are added. Concrete Mix is similar in appearance to Portland cement concrete and may be applied using similar methods.

- Fast setting - hardens to structural strength in 1-hour
- Formulated for long life in critical applications
- Crack resistant, low-shrink, long life formula
- Bonds to concrete, brick, stone and many other surfaces
- High performance, eco-friendly hydraulic cement formulation
- Easy to use - just add water
- Meets ASTM C928 requirements
- One 60 lbs. bag yields 0.5 cu. ft.

Budget Breakdown for the Public Art Installation at MLK Underpass in Pompano Beach, FL

Total Artist Fee:	\$18,750	15%
Materials Cost:		
Mural Paint and Supplies (4212 sf):	\$26,000 (estimated at \$6 per sq ft)	20.8%
Glass Mosaic Materials and supplies (100sf):	\$12,000 (estimated at \$120 per sq ft)	9.6%
Installation Materials and Labor Costs: Expenses related to preparing the site, installing the artwork, and any labor required for these tasks. This includes scaffolding, lifts, or other equipment rentals, and may also involve costs for skilled labor, such as mosaic installers or specialized technicians.		
Mural Installation Labor:	\$10,750 (estimated based on complexity and size)	8.6%
Glass Mosaic Installation Labor:	\$12,000 (estimated based on complexity and size)	9.6%
Installation Materials: (Adhesives, tools, and other required materials)	\$4,000	3.2%
Contingency Fund:	\$6,250	5%
Administration and Project Management: Expenses related to managing the project, including coordinating with various stakeholders, managing contracts, and overseeing the installation process.	\$12,500 (estimated based on project scale and complexity)	10%
Permits and Insurance:	\$2,750	2.2%
Documentation and Promotion: Costs related to documenting the artwork, such as professional photography or video production, as well as marketing and promotional materials	\$5,000	4%
Apprentices	\$15,000	12%
Total Budget	\$125,000	100%