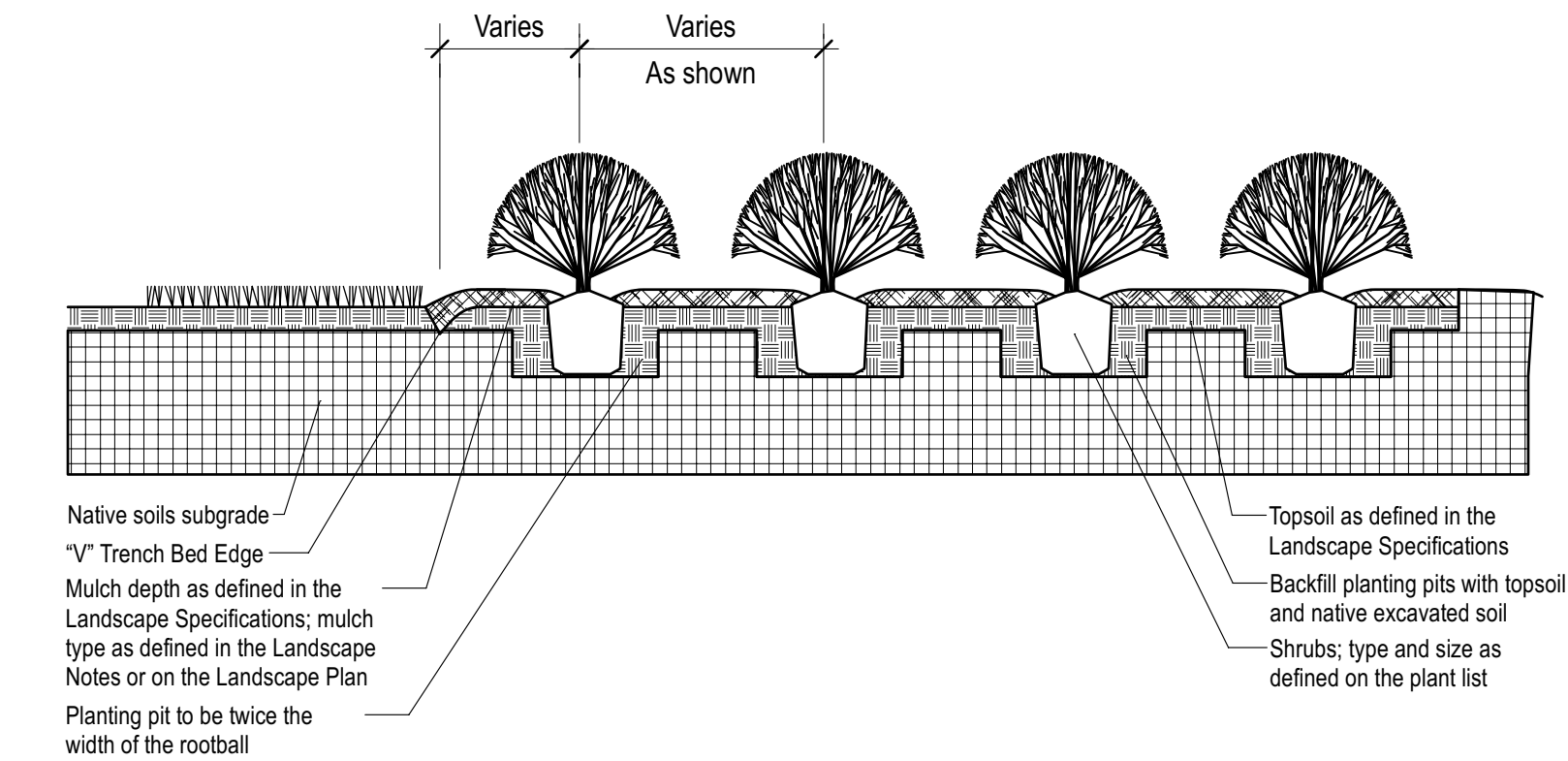
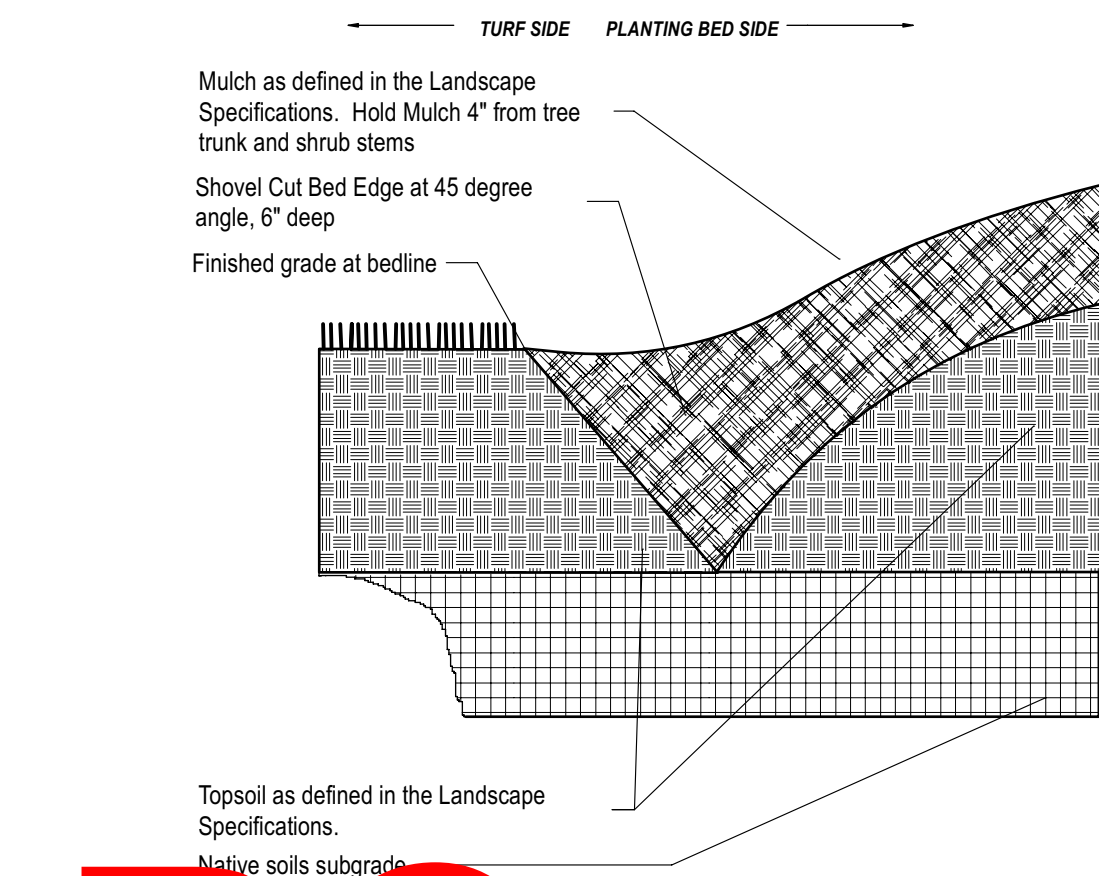


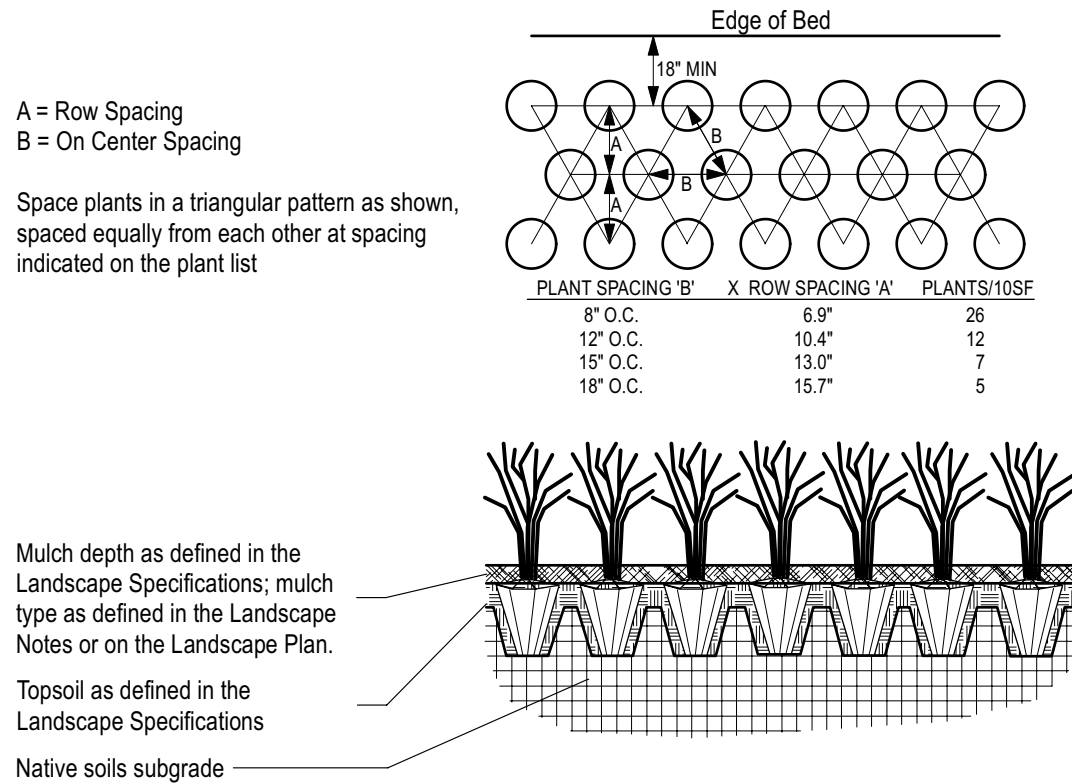
1 TREE PLANTING & STAKING
SCALE: NTS



5 SHRUB BED PLANTING DETAIL
SCALE: NTS



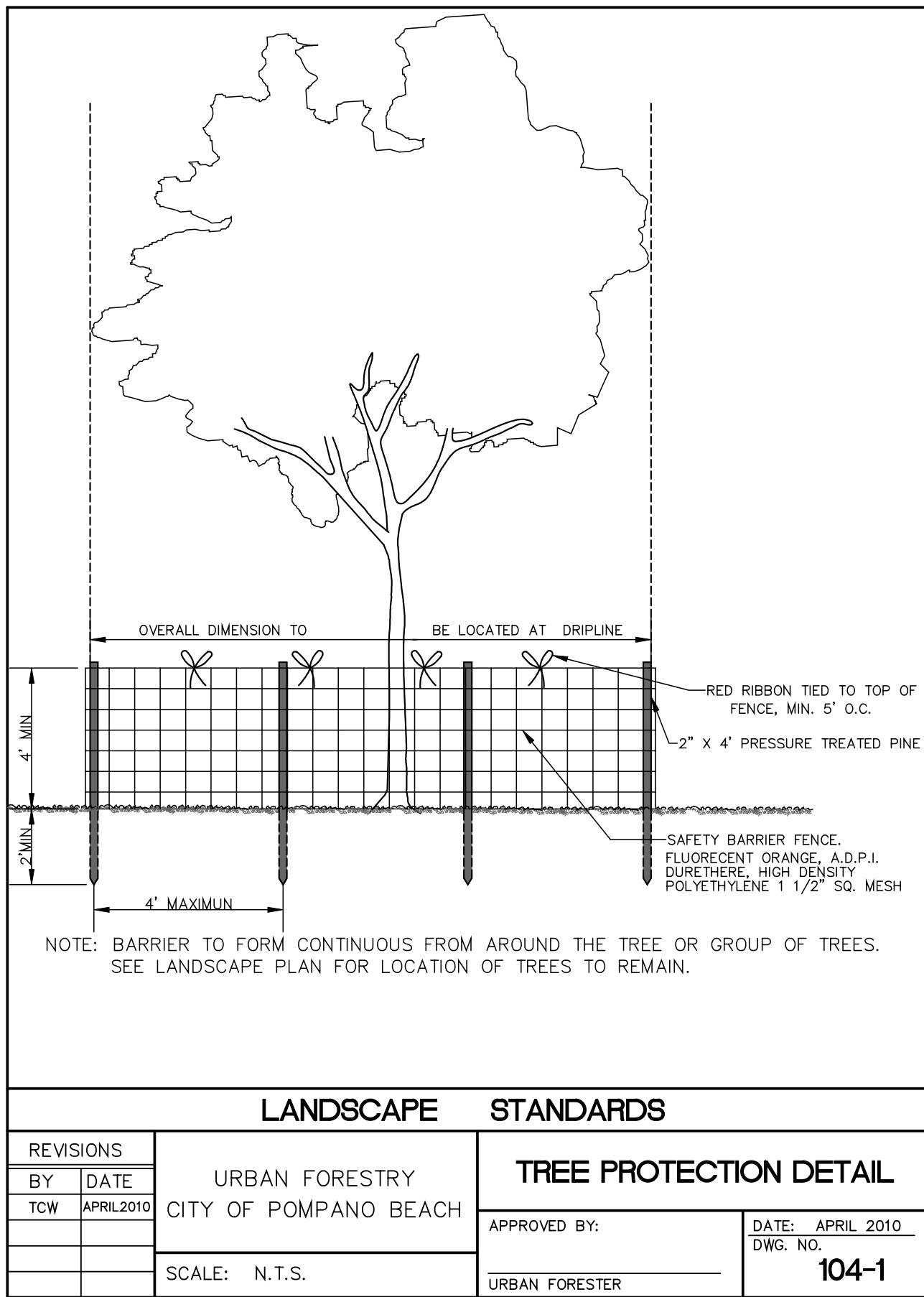
6 1" V TRENCH BED EDGING
SCALE: NTS



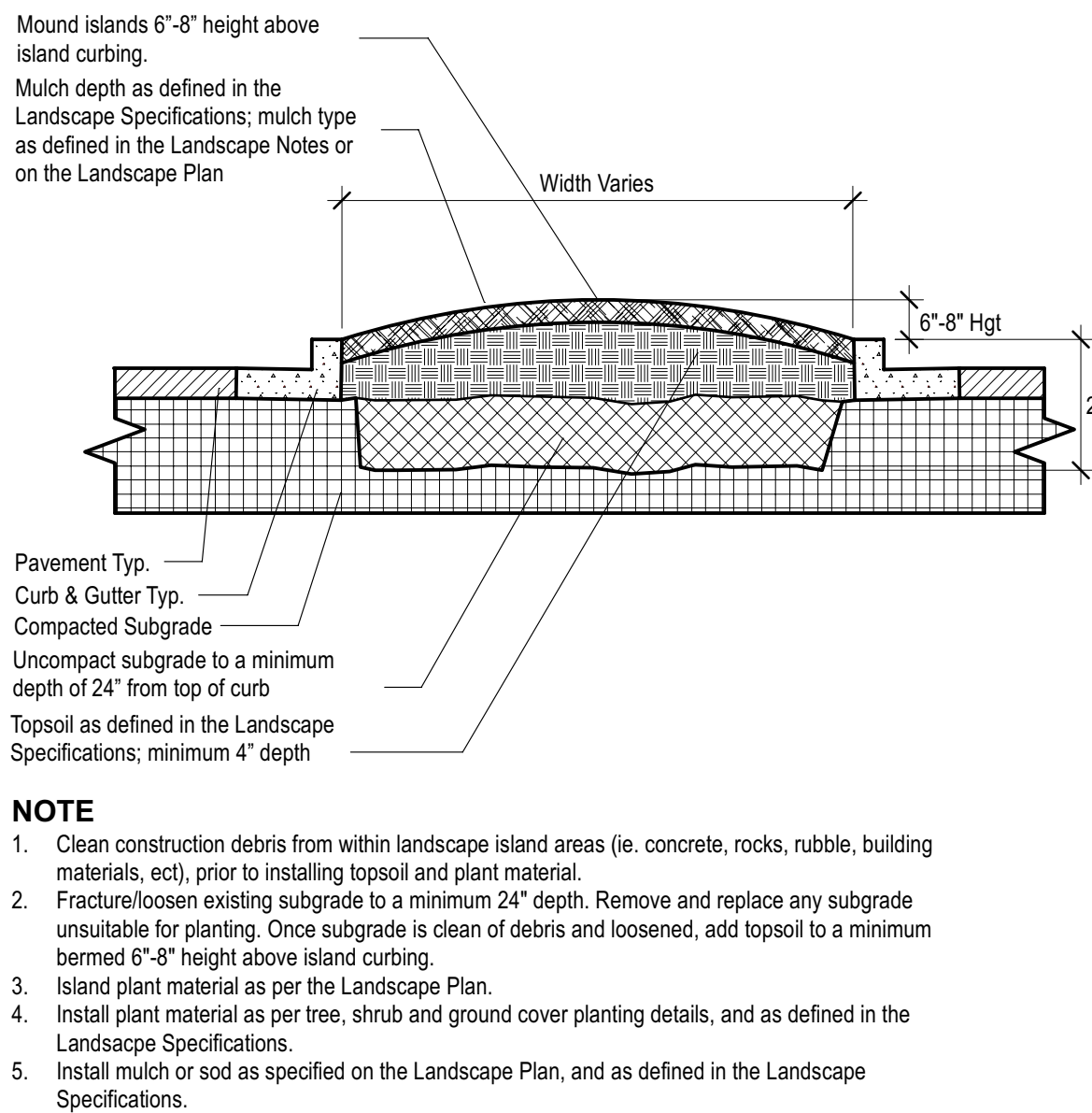
NOTE

- Space groundcover plants in accordance with indicated spacing listed on the plant list, or as shown on the landscape plan.
- Adjust spacing as necessary to evenly fill planting bed with indicated quantity of plants.
- Plant to within 24" of the trunks of trees and shrubs within planting bed and to within 18" of edge of bed.

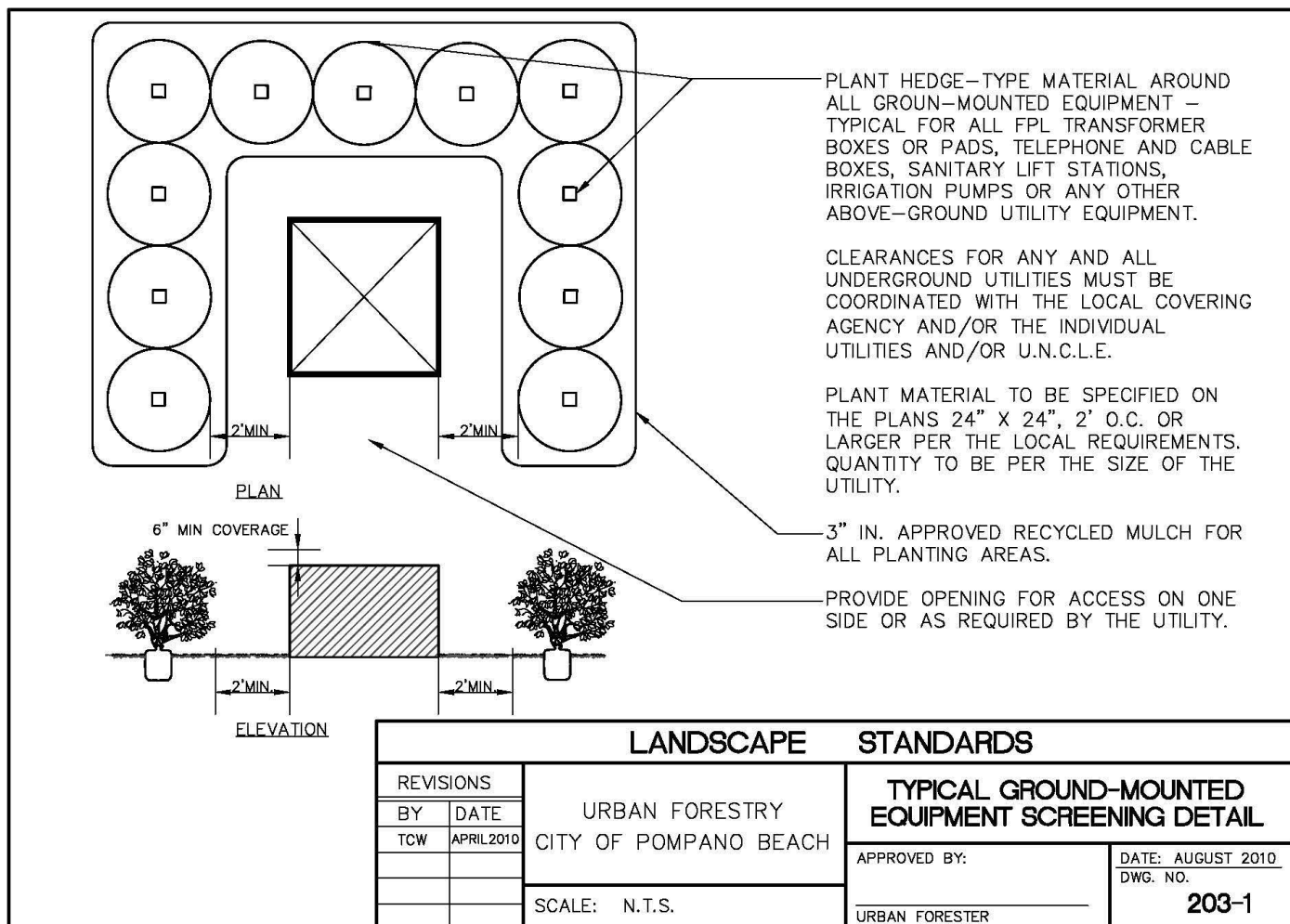
2 GROUNDCOVER PLANTING DETAIL
SCALE: NTS



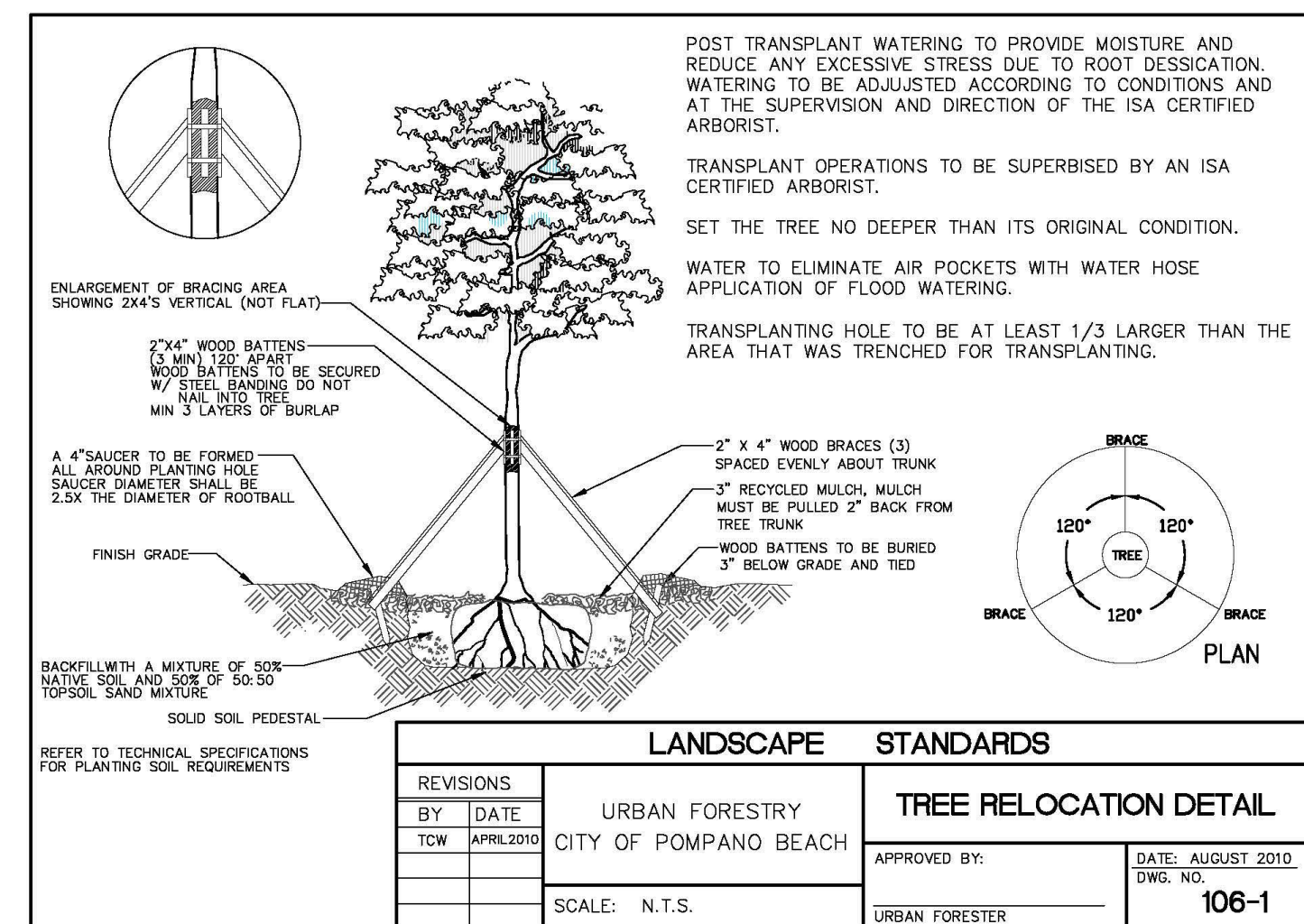
7 TREE PROTECTION FENCE DETAIL
SCALE: NTS



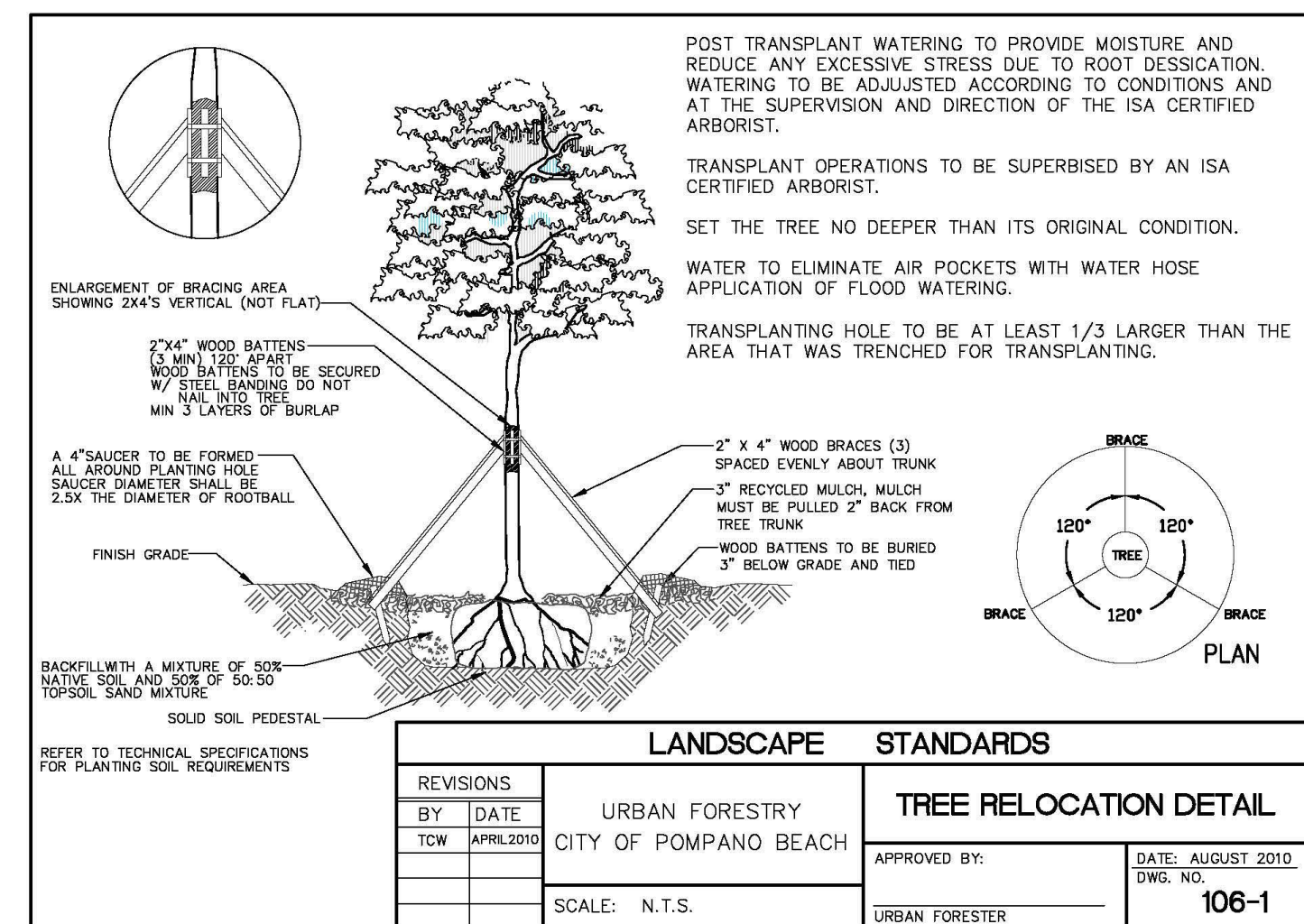
3 PARKING ISLAND DETAIL
SCALE: NTS



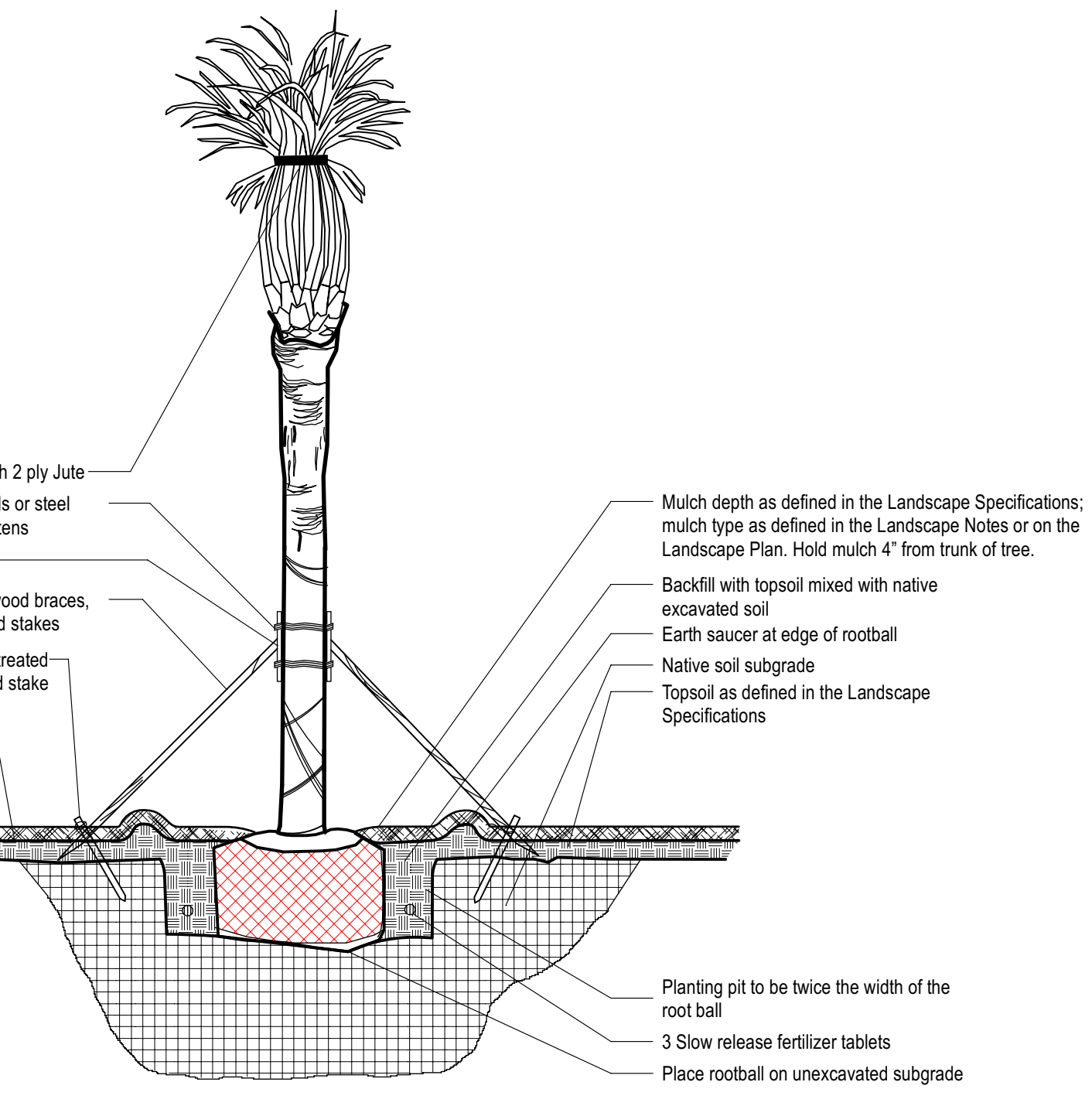
8 GROUND-MOUNTED EQUIPMENT SCREENING DETAIL
SCALE: NTS



9 DUMPSTER AND ENCLOSURE SCREENING DETAIL
SCALE: NTS



10 TREE RELOCATION DETAIL
SCALE: NTS



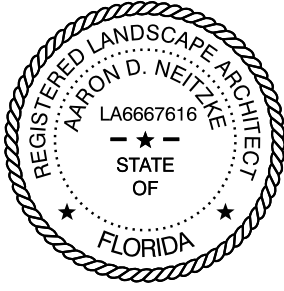
11 CROSS SECTION OF BUILDING FOOTERS / SLAB AND FOUNDATION LANDSCAPING
SCALE: NTS



Chick-fil-A
5200 Buffington Road
Atlanta, Georgia 30349-2998



Manley Land Design, Inc.
51 Old Canton Street
Alpharetta, Georgia 30009
770.442.8171 tel



Digitally signed by
Aaron D Neitzke
DN: c=US,
o=MANLEY LAND
DESIGN,
dnQualifier=A0141
0D00000186B79EB
A9B0006956F,
cn=Aaron D
Neitzke
Date: 2023.10.30
16:32:14 -04'00'

CHICK-FIL-A
ATLANTIC & POWERLINE
2100 W ATLANTIC BLVD
POMPAÑO BEACH, FL 33069

FSU# 05557

REVISION SCHEDULE
NO. DATE BY DESCRIPTION

MLD PROJECT # 2023145
PRINTED FOR PERMIT
DATE 8/3/23
DRAWN BY KCN

Information contained on this drawing and in all digital files produced for above named project may not be reproduced in any manner without express written or verbal consent from authorized project representatives.

SHEET

PERMIT Landscape Details

SHEET NUMBER

L-102