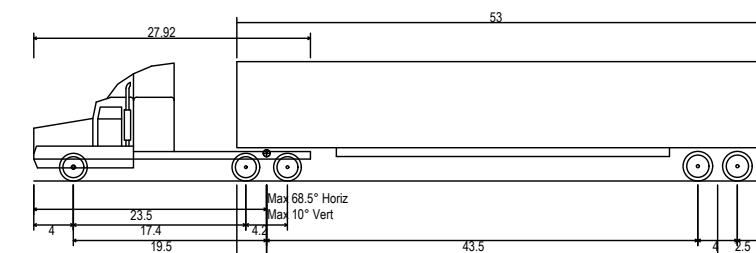
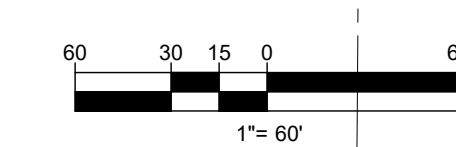
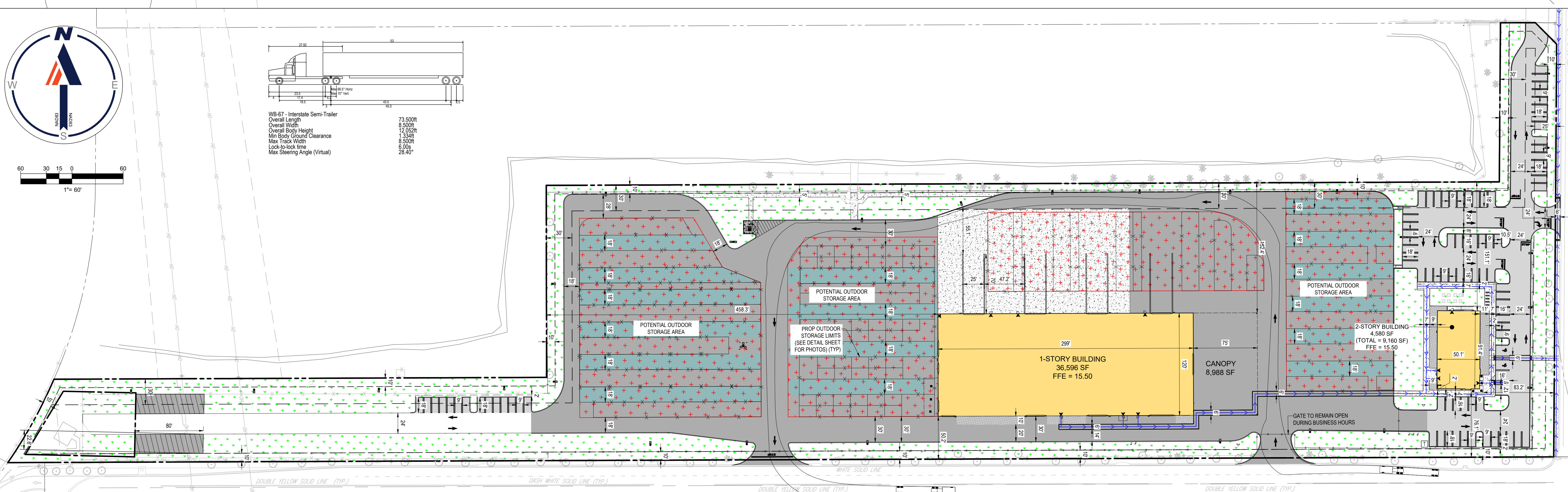
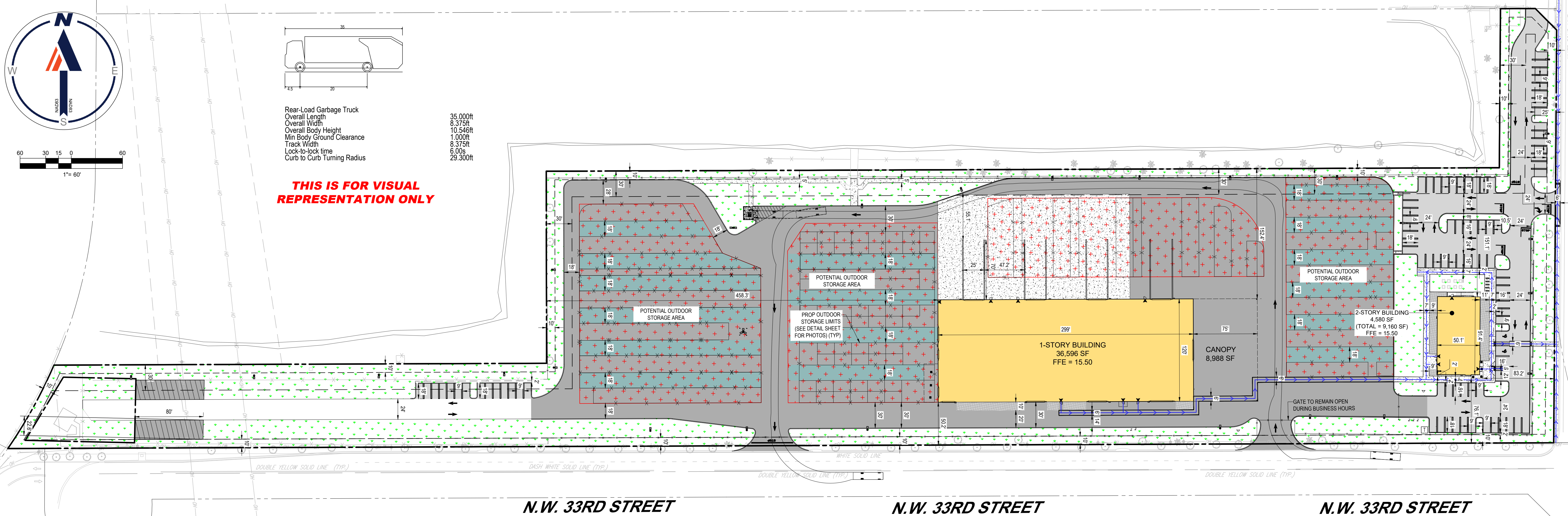


Rear-Load Garbage Truck
 Overall Length 35.000ft
 Overall Width 8.375ft
 Overall Body Height 10.546ft
 Min Body Ground Clearance 1.050ft
 Track Width 8.375ft
 Lock-to-lock time 6.00s
 Curb to Curb Turning Radius 29.300ft

THIS IS FOR VISUAL REPRESENTATION ONLY



WB-67 - Interstate Semi-Trailer
 Overall Length 73.500ft
 Overall Width 8.500ft
 Overall Body Height 12.622ft
 Min Body Ground Clearance 1.334ft
 Max Track Width 8.500ft
 Lock-to-lock time 6.00s
 Max Steering Angle (Virtual) 28.40°



N.W. 27TH AVENUE

N.W. 27TH AVENUE

BOHLER
 SITE CIVIL AND CONSULTING ENGINEERING
 PROGRAM MANAGEMENT
 LANDSCAPE ARCHITECTURE
 SUSTAINABLE DESIGN
 PERMITTING SERVICES
 TRANSPORTATION SERVICES

REVISIONS

REV	DATE	COMMENT	DRAWN BY	CHECKED BY

811
 Know what's below.
 Call before you dig.
 ALWAYS CALL 811
 It's fast. It's free. It's the law.

SITE PLAN
 THIS DRAWING IS INTENDED FOR MUNICIPAL AND/OR AGENCY REVIEW AND APPROVAL. IT IS NOT INTENDED AS A CONSTRUCTION DOCUMENT UNLESS INDICATED OTHERWISE.
 PROJECT No.: FLB230010.00
 DRAWN BY: RN
 CHECKED BY: SC
 DATE: 02/08/2023
 CAD ID.: SITE

PROPOSED SITE PLAN
 FOR
CRITERION
 EXTERIOR GROUP LLC
 PROPOSED DEVELOPMENT
 NW 33RD STREET
 POMPANO BEACH, FL 33069

BOHLER
 1900 NW CORPORATE BOULEVARD
 SUITE 101E
 BOCA RATON, FLORIDA 33431
 Phone: (561) 574-0280
 Fax: (561) 574-0281
 FLORIDA BUSINESS CERT. OF AUTH. NO. 30780

THIS ITEM HAS BEEN DIGITALLY SIGNED AND SEALED BY MEROUJANE EL KAOUSSE, P.E. ON THE DATE ADJACENT TO THE SEAL. PRINTED COPIES OF THIS DOCUMENT ARE NOT CONSIDERED SIGNED AND SEALED AND THE SIGNATURE MUST BE VERIFIED ON ANY ELECTRONIC COPIES.

SHEET TITLE:
TRUCK TURN PLAN
 SHEET NUMBER:
C-302
 ORG. DATE - 02/08/2023