

SITE CALCULATIONS

ZONING	I-1	AREA	PERCENTAGE
GROSS SITE AREA		26,644 S.F.	100.0%
TOTAL IMPERVIOUS AREA		18,327 S.F.	69% / 80% MAX.
PAVEMENT/SIDEWALK		16,762 S.F.	
TOTAL GREEN AREA		8,317 S.F.	31% / 20% MIN.
BUILDING		1,565 S.F.	4%

LANDSCAPE CODE ZONE I-1 CALCULATIONS

	REQUIRED	PROVIDED
155.5203.C. MINIMUM DEVELOPMENT SITE LANDSCAPING		
PERVIOUS AREA: 1 TREE + 5 SHRUBS FOR EVERY 3,000 S.F.	9 TREES 45 SHRUBS	24 TREES 304 SHRUBS
PERIMETER LANDSCAPE TREES (1 TREE EVERY 40 L.F.) CONTINUOUS HEDGE 24" HEIGHT		
NORTH 178 L.F. / 40 L.F. = 4.45 TREES	5 TREES	5 TREES
EAST 150 L.F. / 40 L.F. = 3.75 TREES	4 TREES	4 TREES
SOUTH 178 L.F. / 40 L.F. = 4.45 TREES	6 TREES	6 TREES
WEST FACADE 55 L.F. / 40 L.F. = 1.3 TREES	2 TREES	2 TREES
ISLAND TREE ON TREE PER ISLAND	4 TREES	4 TREES
CONTINUOUS PERIMETER V.U.A. HEDGE	YES	YES
BUILDING BASE PLANTING STANDARDS	YES	YES

PLANT LIST

KEY	PLANT DESCRIPTION	SPECIFICATIONS	QTY
GUM	Bursera simaruba Gumbo Limbo	12" ht x 6" Spr. . 6" CT, 3" caliper	2
LAG	Lagerstroemia indica "Natchez" Natchez White Crape Myrtle	12" ht x 6" Spr. . 6" CT, 2" Caliper Tree Standard	3
OAK	Quercus virginiana Live Oak	12" ht x 8" Spr. 6" CT, 3" caliper (ROOT GROWERS PLUS)	9
CHR	Chrysobalanus icaco "Red Tip" Red Tip Cocoplum	24" Ht X 24" Spr. 24" O.C. sp.	150
COF	Psychotria nervosa Wild Coffee	24" Ht X 24" Spr. 24" O.C. sp.	146
FGI	Ficus microcarpa 'Green Island' Green Island Ficus	18" Ht X 18" Spr. 18" O.C. sp.	160
RHA	Rhaphis excelsa Lady Palm	4' OA ht x 3' spr min 7" stems	4
WRT	Microsorium scolopendrium Wart Fern	14" Ht X 14" Spr. 24" O.C. sp.	220
SOD	Stenotaphrum secundatum "Palmetto" St. Augustine Grass	Solid sod tight joints, weed free	as needed
MULCH	All areas not covered by Sod shall be Mulched in 3" continuous layer.	Eco-Mulch / available source 561-499-8148 www.mulchingsolutions.com	as needed

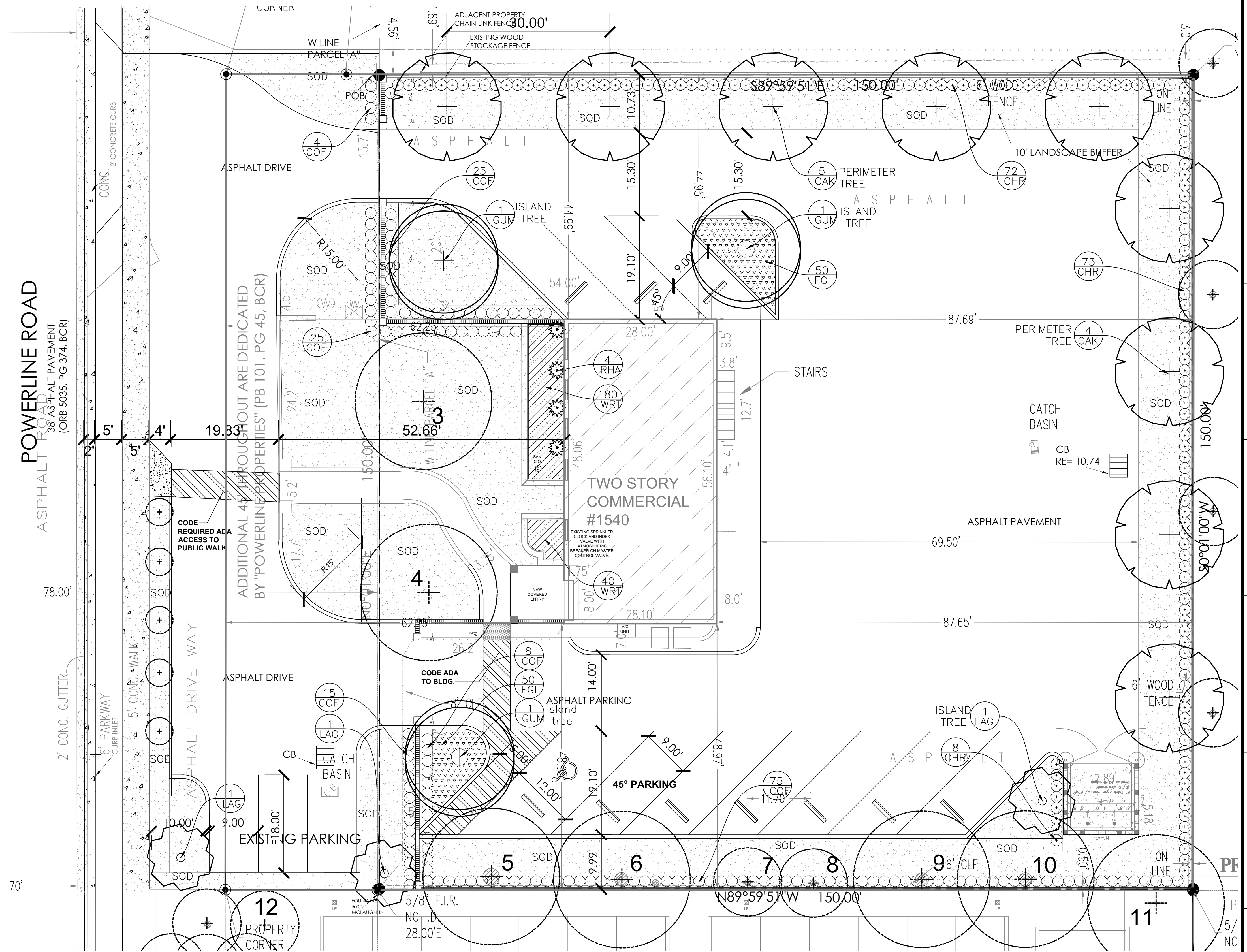
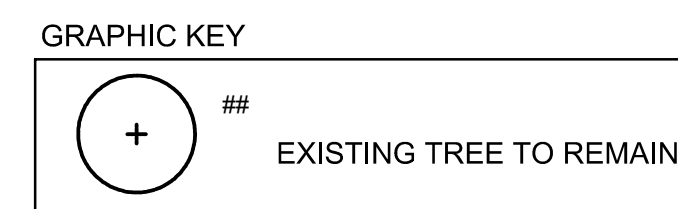
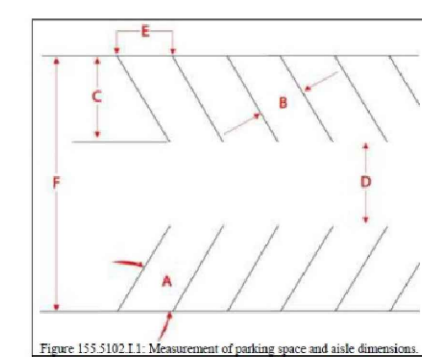


TABLE 155.502(1) DIMENSIONAL STANDARDS FOR NARROW SPACES AND ALLEYS

Parking Angle (Degrees)	Stall Width (ft)		Stall Depth Perpendicular to Curb (ft)		Aisle Width (ft) ¹		Stall Length Along Curb (ft)		Double Row + Aisle, Curb to Curb (ft)
	A	B	C	D	E	F	G	H	
90	9	9	11	14	11	11	11	11	17
80	9	9	11.1	14.1	11.1	11.1	11.1	11.1	17.2
70	9	9	11.2	14.2	11.2	11.2	11.2	11.2	17.4
60	9	9	11.4	14.4	11.4	11.4	11.4	11.4	17.8
50	9	9	11.7	14.7	11.7	11.7	11.7	11.7	18.4
45	9	9	12	15	12	12	12	12	19

NOTES:
 1. Refer to Figure 155.502(1) below for illustrations showing how dimensions for parking spaces and aisles in various configurations (A-G) are measured.
 2. For one-way traffic, Aisles for two-way traffic shall be at least 22 feet wide. For all parking angles, The Development Services Director may approve an aisle width less than the minimum on determining that the aisle is sufficiently wide to allow vehicle to conveniently maneuver through the parking area and across each parking space without blocking through and other parking spaces.
 3. Compact Parking Spaces in Parking Garages
 When provided in a parking garage, the dimensions of up to 20% of the required off-street parking spaces may be reduced to a width of 8 feet and 6 inches and a depth/length of 16 feet. The spaces shall be marked as Compact Parking Spaces.



NORTH

811

Know what's below.
Call before you dig.

PERMIT NUMBER: 20-3227

LAC

LANDSCAPE ARCHITECT CONSULTANTS
 5215 W. Broward Boulevard
 Plantation, Florida 33317
 P (954) 581-1110 F (9) 581-7118
 L.C.26000422
 Thomas J. Laubenthal, R.L.A.
 TOM@LACFL.COM
 LA-0000563

DATE	REVISIONS:

DATE: 11/29/2021
 SCALE: 1" = 10'
 DRAWING BY: BF/AD
 DESIGNED BY: BF/AD

PROJECT: 1540 POWERLINE RD
 BROWARD COUNTY
 POMPANO BEACH, FLORIDA
LANDSCAPE PLAN:

PROJECT NO.
20-017
 SHEET:
LP-1 of 2

DATE:
 THOMAS J. LAUBENTHAL
 #LA-0000563 #LC-26000422