

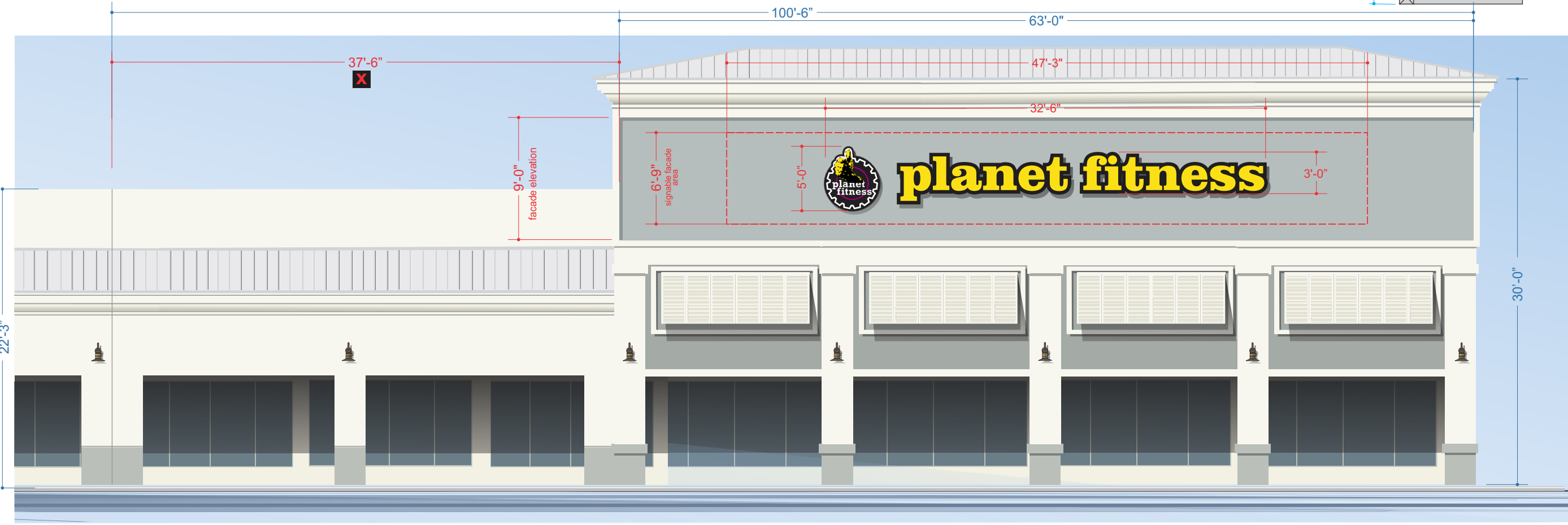
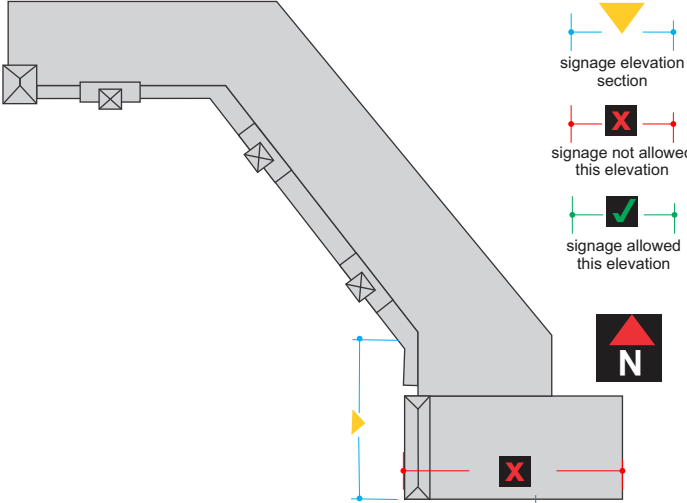
SW Elevation Tenant Specifications: Section 5

West Elevation

Anchor Tenant Signage Specifications: Architectural Tower Feature

Square Footage Requirements:
10% of tenants frontage along building facade.
Frontage is calculated as the height of facade multiplied
by the length of the facade.

"Planet Fitness" Anchor Tenant Elevation signage sq ft allowable:
30'-0" (30.0) x 63'-0" (63.0) = 1890 sq ft x 10% = 189.0 sq ft
22'-3" (22.5) x 37'-6" (37.5) = 834.375 sq ft x 10% = 83.43
Total Combined: 272.43
Example: 5'-0" (5.0) x 32'-6" (32.5) = 162.50 sq ft



West Elevation: Section 5



Palm Plaza Elevation

Note: The elevations shown depict "typical" examples of tenant signage, placements and storefront lengths to help guide tenants with detailed information on message sizes and placement on the tenants elevation. The examples of tenant storefront elevation measurements shown in this MSP may change depending on tenant needs and availability of leasing requirements. Final Leased lengths will determine an adjusted allowable square footage calculations for tenant signage per City of Pompano Beach Sign Code

AAC

PZ24-30000006

KEY:

- signage elevation section
- signage not allowed this elevation
- signage allowed this elevation



Glen Welden & Associates, LLC
3200 N FEDERAL HIGHWAY, SUITE 206-11 BOCA RATON FLORIDA 33431
email: gwadesign@gmail.com
website: gwelden.com

project name:



project address:
1400-1450 South Powerline Road
Pompano Beach Florida

date:
03/04/25

scope of work:
Master Sign Plan for Palm Place

client

notes

- 1. x
- 2. x
- 3. x