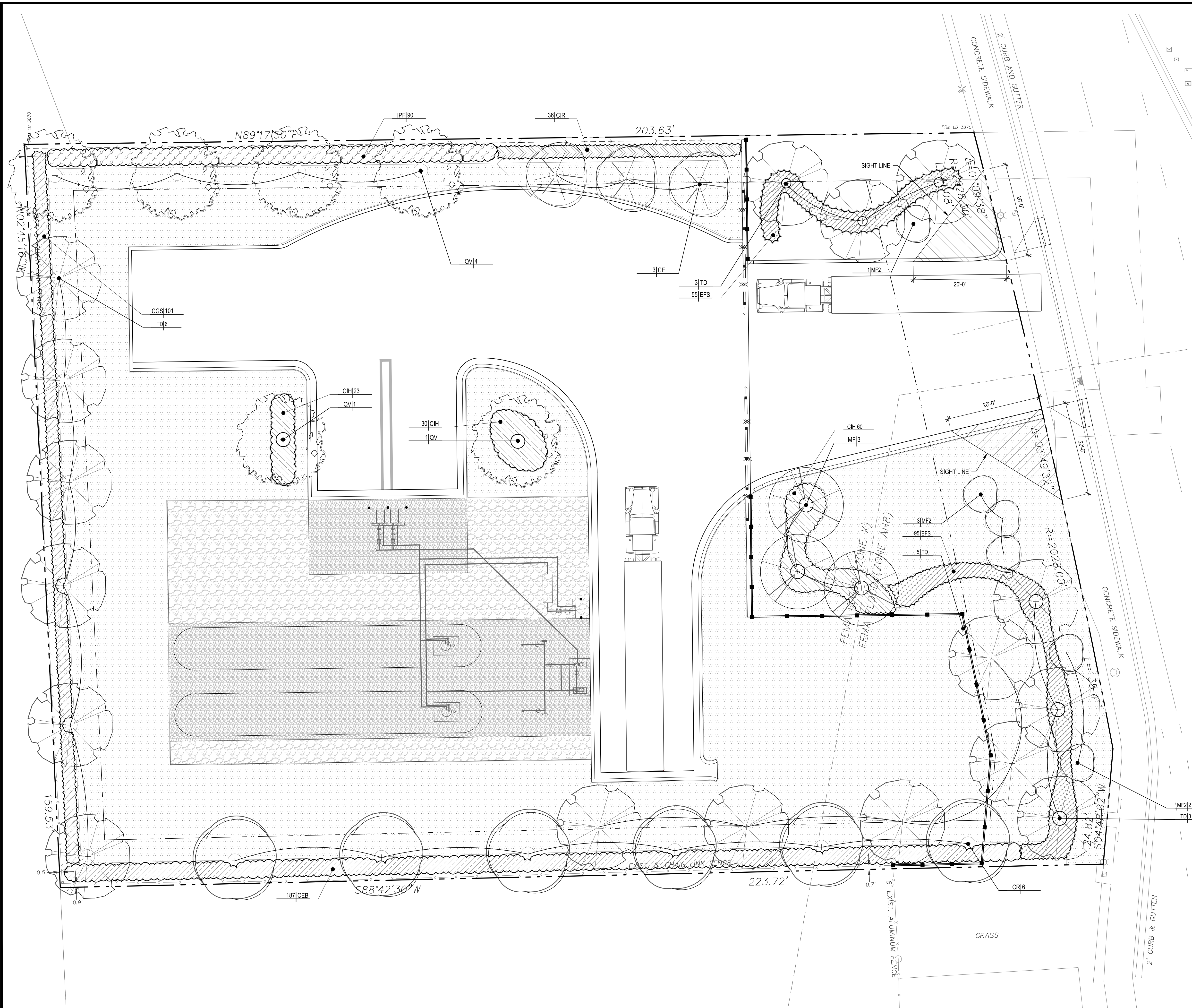


File Name: P:\Projects\2023\237806 Blossman Gas Pompano\CAD\Drawings\237806-PLANTING_PLANS.dwg - (Plotted by: Marcos Mendez on Wednesday, March 20, 2024 11:45:50 AM)



PLANT SCHEDULE					
SYMBOL	CODE	QTY	BOTANICAL / COMMON NAME	SIZE	ADD. SPECS
CANOPY TREES					
	CR	6	Clusia rosea Autograph Tree	F.G. 14' HT x 6", 2.5' DBH, 4.5' CT	
	CE	3	Conocarpus erectus f. sericeus Silver Buttonwood	F.G. 14' HT x 6", 2.5' DBH, 4.5' CT	
	MF	3	Myrcianthes fragrans Simpson's Stopper	F.G. 14' HT x 6", 2.5' DBH, 4.5' CT	
	QV	6	Quercus virginiana Southern Live Oak	F.G. 14' HT x 6", 2.5' DBH, 4.5' CT	
	TD	17	Taxodium distichum Bald Cypress	F.G. 14' HT x 6", 2.5' DBH, 4.5' CT	
UNDERSTORY TREES					
	MF2	6	Myrcianthes fragrans Simpson's Stopper	F.G. 10' HT, X 4' SPR., 2' CAL.	
SHRUB AREAS					
	CH	113	Chrysobalanus icaco 'Horizontalis' Horizontal Coco Plum	24" x 24"	Full to ground, 24" o.c.
	CR	36	Chrysobalanus icaco 'Red Tip' Red Tip Coco Plum	24" x 24"	Full to ground, 24" o.c.
	CGS	101	Clusia guillermi Small Leaf Clusia	24" x 24"	Full to ground, 24" o.c.
	CEB	187	Conocarpus erectus Green Buttonwood	24" x 24"	Full to ground, 24" o.c.
	EFS	150	Eugenia foetida Spanish Stopper	24" x 24"	Full to ground, 24" o.c.
	IFF	90	Illicium floridanum Florida Anise	24" x 24"	Full to ground, 24" o.c.
GROUND COVERS					
	SOD	13,797 sf	Stenotaphrum secundatum 'Florant' Florant St. Augustine Grass	Sod	

Planting Requirements					
Zoning:	General Industrial				
Lot Area:	34,443 SQ FT				
Landscape Area:	16,891 SQ FT				
		Required		Provided	
Code Section	Description	Trees	Shrubs	Trees	Shrubs
155.5203.C	1 tree and 5 shrubs per 3000 Sq Ft of lot area.	7	58	7	60
155.5203.D.4	1 tree required per parking island.	2	-	2	53
155.5203.F.3	Required Buffers for Industrial Zoning use a Type C Buffer with option 1 or 2				
	North Property Type A: 203.63' / 30'	7	102	7	181
	East Property Type C: 135.4' - 40' / 30' Canopy	3	68	3	95
	East Property Type C: 135.4' - 40' / 15' Understory	6		6	
	South Property Type A: 223.72' / 30'	8	112	8	187
	West Property Type A: 159.53' / 30'	6	80	6	101
155.5203.G.2b	Street Trees 1 per 40 linear feet	2	-	2	-
Total Trees & Shrubs Required / Provided:		41	420	41	677
Notes:					
Trees shall be a minimum of 14' in Height					
Shrubs shall be a minimum of 2' in height by 2' spread, 2' O.C.					

Note: Per City Ordinance(s) §50.02(A)(4) and §100.35(E), landscaping materials other than sod are not allowed within (5') five feet of any portion of City owned utilities within the public street right-of-way including meters, hydrants, service lines etc. Also, please note that no trees, shrubbery or obstruction shall be placed within a 3' radius of a City-owned sewer lateral cleanout or water #/or reuse meter. Show the location of all existing City owned and maintained potable water mains and services, sanitary sewer mains or laterals and storm drainage lines on the proposed landscape plans. Contact the Engineering Div. for Utility information. Engineering Standard street tree detail 316-1. Landscape Plans needs to have the Utilities overlaid onto the plan sheets.

NO	DATE	REVISION	BY	NO	DATE	REVISION	BY

CA **85** Calvin, Giordano & Associates, Inc.
A SAFENET COMPANY
580 Village Blvd., Suite 325, West Palm Beach, FL 33409
Phone: 561.684.6561 • Fax: 561.684.6350

BLOSSMAN GAS COMPANY
261 S. ANDREWS AVENUE
POMPAN BEACH, FL 33069

PLANTING PLAN & SCHEDULE

MICHAEL CONNER, R.L.A.
STATE OF FLORIDA REGISTERED LANDSCAPE ARCHITECT
LICENSE No. 1181

SCALE: AS SHOWN
PROJECT No: 23-7806
DATE: 03/20/2024

www.callounshine.com

811 KNOW WHAT'S BELOW ALWAYS CALL 811 BEFORE YOU DIG
It's fast. It's free. It's the law.

PRELIMINARY SITE PLANS - NOT FOR CONSTRUCTION

L-100