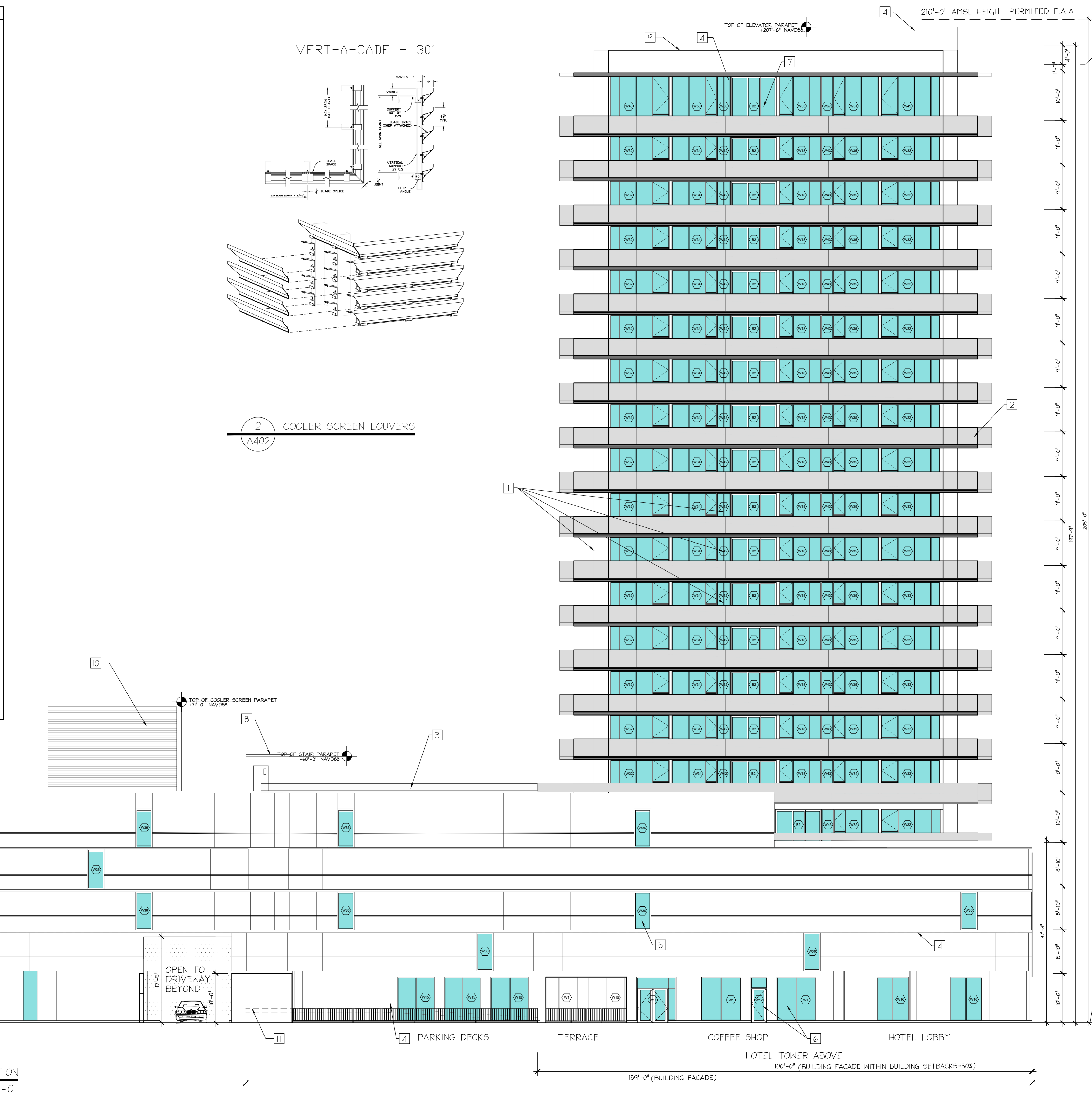


- ELEVATION LEGEND
- 1 8" ALUMINUM PRIVACY SCREENS BETWEEN BALCONIES COLOR: PURE WHITE SHERWIN WILLIAM SH 7005(TYP.)
 - 2 42" HIGH ALUMINUM RAILING PPG CAP UC106704XL DURANAR PLATINUM W/ IMPACT GLASS (TYP.)
 - 3 METAL FLASHING COLOR: PURE WHITE SHERWIN WILLIAM SH 7005 (TYP.)
 - 4 STUCCO SURFACING COLOR: PURE WHITE SHERWIN WILLIAM SH 7005 (NOTE: WHERE CONCERNED, TOP OF ELEVATOR.)
 - 5 GLASS WINDOWS PPG CAP UC106704XL DURANAR PLATINUM W/ IMPACT RESISTANT GLASS
 - 6 ALUMINUM STOREFRONT WINDOWS AND GLASS DOORS PPG CAP UC106704XL DURANAR PLATINUM W/ IMPACT RESISTANT GLASS (TYP.)
 - 7 ALUMINUM WINDOWS AND SLIDING GLASS DOORS PPG CAP UC106704XL DURANAR PLATINUM W/ IMPACT RESISTANT GLASS
 - 8 TOP OF STAIR STRUCTURE 2 HR. F.R. STAIR ENCLOSURE FROM CURRENT LEVEL DOWN TO GRADE
 - 9 METAL FLASHING COLOR: DURANAR PLATINUM PPG CAP UC106704XL (TYP.)
 - 10 ALUMINUM HORIZONTAL LOUVERS CS CONSTRUCTION SPECIALTIES COLOR: PURE WHITE SH 7005 KYNAR 500 PAINT FINISH
 - 11 120" HIGH CONCRETE WALL PAINTED PURE WHITE SHERWIN WILLIAM SH 7005 WITH 1/2" ALUMINUM (LOADING BERTH) KYNAR 500 PAINT FINISH
- GENERAL NOTES:
- GROUND FLOOR WINDOWS WILL HAVE A GLAZING OF A MINIMUM VISIBLE LIGHT TRANSMITTANCE OF 75% AND A MAXIMUM REFLECTANCE OF 15%
- ALL PAVING TO MATCH CITY'S A.O.D. STANDARD COLOR MIX.
- LIGHT FIXTURES AND POLES TO BE VISIONAIRE LIGHTING BLACK ANODIZED FINSH OR SIM.
- TURTLE SHIELDED LIGHT FIXTURES:
1. Lights that directly, indirectly, or cumulatively illuminate dune crosswalks in any areas seaward of the dune line shall be turned off between sunset and sunrise during nesting season of sea turtles (March 1 through October 31 of each year).
 2. Low-profile luminaires may be used for security lighting if they are positioned and screened so they do not directly illuminate the beach.
 3. Windows and glass doors--including those above the first floor of multistory structures--located within line-of-sight of the beach are required to be covered by a product or device that, when applied or installed, sufficiently reduces the transmittance of artificial light from within the building to shield any interior artificial light sources from directly illuminating the beach.
 4. Existing exterior artificial lights shall be fitted with hoods, shielded, or screened so that their light sources do not directly illuminate the beach.
 5. The screening or placement of hoods on artificial lights shall be consistent with any listing or labeling warnings, standards, requirements, or recommendations provided for the fixture in accordance with article 110-3 (b) of the National Electrical Code.
- D. New Beachfront Lighting and Development
- All lighting proposed as part of new development, including parking lots and dune walkovers, that can be seen from the beach shall comply with the following standards:
1. Floodlights, uplights, or spotlights used for decorative and accent purposes that are directly visible from the beach, or which indirectly or cumulatively illuminate the beach, are prohibited.
 2. Wall-mounted light fixtures shall be fitted with hoods so the point source of light or any reflective surface of the light fixture is not directly visible from the beach.
 3. Exterior light fixtures set on a base or pole shall not raise the source of light higher than 40 inches off the ground.
 4. Only low intensity lighting shall be used to light parking areas, and light fixtures shall be positioned or shielded so that the light is cast downward and the light source is not visible from the beach and does not directly or indirectly illuminate the beach. Parking areas shall be located and designed to prevent vehicular headlights from directly or indirectly illuminating the beach. Vehicular lighting, parking area lighting, and roadway lighting shall be shielded from the beach through the use of ground-level barriers that do not interfere with marine turtle nesting or emergence of hatchlings, nor cause short or long-term damage to the beach and dune system.
 5. Exterior lights used expressly for safety or security purposes shall be limited to the minimum number and configuration necessary for security and convenience. Lights designed to be activated only when approached (motion detectors) and switch off within two minutes duration are exempt if used for safety or security purposes.
 6. Dune crosswalks, if lighted, shall utilize low-profile shielded luminaires.
 7. Lights on balconies shall be fitted with hoods so they do not illuminate the beach.
 8. Windows and glass doors--including those above the first floor of any multistory structures--located within line-of-sight of the beach are required to have tinted or filmed glass sufficient to shield interior lights and prevent them from illuminating the beach.
 9. Temporary or security lighting of construction sites during the turtle nesting season shall be restricted so that illumination from the lights shall not spread the boundary of the property being developed, and in no case shall the lights illuminate the beach.
 10. The screening or placement of hoods on artificial lights shall be consistent with any listing or labeling warnings, standards, requirements, or recommendations provided for the fixture in accordance with article 110-3 (b) of the National Electrical Code.
- E. Streetlights and Lighting at Public Parks and Facilities
- Streetlights and lighting at parks, government facilities, and publicly owned beach access areas shall be subject to the following standards:
1. Whenever practicable, streetlights shall be located so that the bulk of their illumination is directed away from the beach. Streetlights shall be equipped with shades or shields that minimize backlighting and reduce their visibility from the beach.
 2. Lights at parks, government facilities, and publicly owned beach access points shall be shielded or shaded during the turtle nesting season (March 1 through October 31 of each year) so they are not visible from the beach.



- 1 NORTH BUILDING ELEVATION
A402
- 1/8" = 1'-0"

Level	Height (NAVDB)
21st LEVEL	186'-0"
20th LEVEL	177'-0"
19th LEVEL	170'-0"
18th LEVEL	161'-0"
17th LEVEL	152'-0"
16th LEVEL	143'-0"
15th LEVEL	134'-0"
14th LEVEL	125'-0"
13th LEVEL	116'-0"
12th LEVEL	107'-0"
11th LEVEL	98'-0"
10th LEVEL	89'-0"
9th LEVEL	80'-0"
8th LEVEL	71'-0"
7th LEVEL	62'-0"
6th LEVEL	52'-0"
5th LEVEL PARKING	42'-4"
4th LEVEL PARKING	33'-0"
3rd LEVEL PARKING	24'-0"
2nd LEVEL PARKING	16'-0"
F.F.E. (FINISHED FLOOR ELEVATION)	6'-0"
GROUND LEVEL	6'-0"
SIDEWALK	5'-0"



Client	
Revision	Issued for
Date	
AUG 23rd 2017	
NOV 1st 2018	
DEC 12nd 2018	JRC
JAN 17th 2019	RAC

KEITH AND ASSOCIATES, INC.
303 E. Atlantic Boulevard
Pompano Beach, FL 33069
Engineers Surveyors Planners Landscape Architects
Construction Managers Subsurface Utility Engineers (SUS) |
Ph: 954.788.3400 | Fax: 954.788.3500

Civil

NV5
16486 Commerce Way, Miami Lakes, FL 33055
Ph: 305.696.6583
Fax: 305.696.3005
info@nv5.com
nv5.com

Geotechnical

DHI
11008 Blueway Blvd., Suite 204, Miami, FL 33156
Ph: 305.339.3500
dhi@dhi.com

Structural Eng.

Mechanical/Electrical

MICHAEL FAY LANDSCAPE ARCHITECT
420 N.W. 7th St.,
Dorridge Branch, FL 33444
phone: 561-366-4003
michael@mfa.com

Landscape

PAUL E. BREWER & ASSOCIATES, INC.
12331 N.W. 35th Street
Oviedo, FL 32765
Phone: (407) 753-9210
Fax: (407) 753-9815
E-MAIL: PEBS@PEBINC.COM

Surveyor	
drawings	
plans for construction	<input type="radio"/>
plans for submittal	<input type="radio"/>
plans for coordination	<input type="radio"/>
plans for permit	<input checked="" type="radio"/>

Rodrigo Carrion
Digitally signed by Rodrigo Carrion
DN: cn=Rodrigo Carrion, o=DNA Design & Architecture, ou=AR91744, email=rcarrion@dna-arc.com, c=US
Date: 2019.01.22 10:50:15 -0500'

DNA DESIGN & ARCHITECTURE
7636 N.E. 4th COURT,
SUITE 114, MIAMI, FL 33158
Ph: (305) 500-2992
Fax: (305) 753-9815

Architect

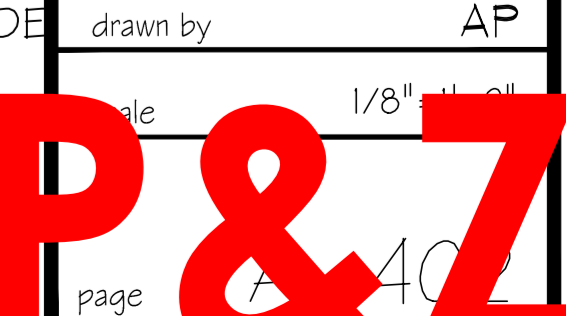
Note:
The contractor will verify all dimensional sizes and will report to the architect any missing or actual dimensioned that does not match the drawings. The contractor will be responsible for any construction from the architect's drawings for proceeding work.

NORTH BUILDING ELEVATION

title
3300 S.E. 1st Street
project
Pompano Beach, FL

no of project 1502

drawn by AP



PZ18-1200047
3/27/19