



LRA Architects, Inc.  
ARCHITECTURE & PLANNING  
9000 SHERIDAN STREET ST. 158  
PEMBROKE PINES, FL 33024  
(OFF.) - 305-403-7926  
(CELL) - 786-543-0851  
E-MAIL: LRA@LRAARCHITECTS.COM  
LEI-0017852  
-Registered Architect  
LRA

Revision

REV	DATE	BY
-----	------	----

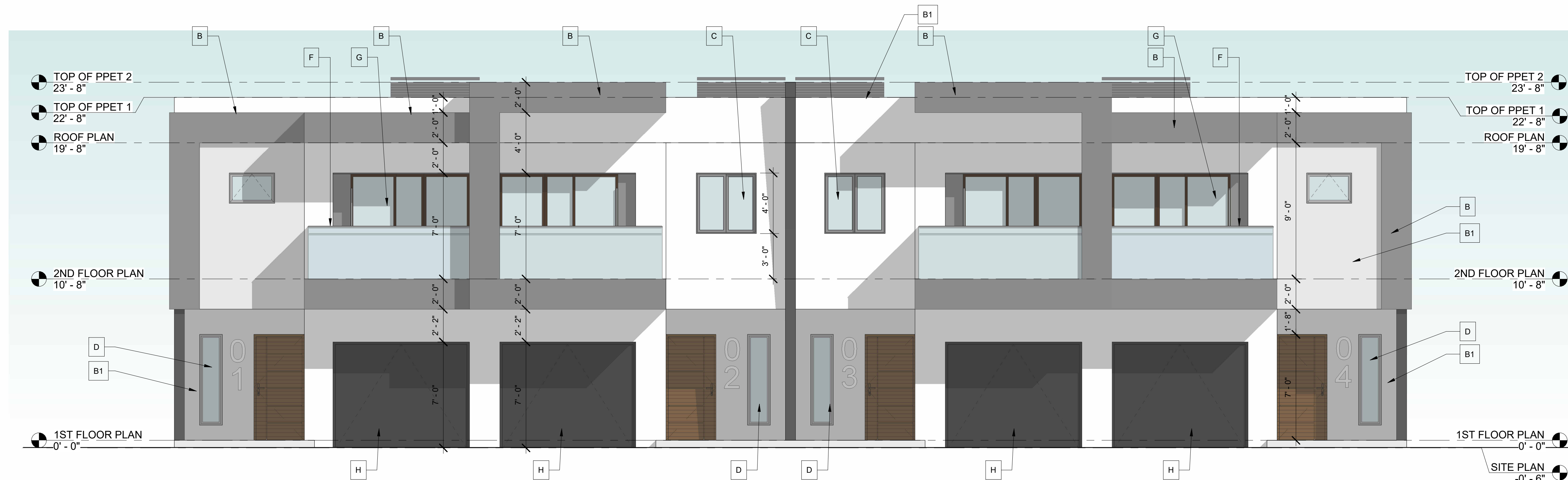
PROPOSED 4-TOWNHOUSE DEVELOPMENT FOR:  
LOT 930 (PARCEL-A) COLLIER CITY  
POMPANO BEACH, FL 33069

SEAL: AR 0017852  
11/02/2024



DRAWN:	Author
CHECKED:	Checker
DATE:	5/05/2025
SCALE:	AS NOTED
JOB. NO.:	024-021
SHEET:	
OF:	
SHEETS:	

5/12/2025 4:19:03 PM



1 PROPOSED NORTH ELEVATION  
1/4" = 1'-0"



2 PROPOSED SOUTH ELEVATION  
1/4" = 1'-0"

## FINISH NOTES

- A 5/8" STUCCO FINISH PAINTED COLOR: WHITE
- B 5/8" STUCCO FINISH PAINTED COLOR: DARK GRAY
- B1 5/8" STUCCO FINISH PAINTED COLOR: LIGHT GRAY

- C IMPACT RESISTANT SLIDING WINDOW WITH BRONZE ALUMINUM FRAME.
- D IMPACT RESISTANT FIXED WINDOW WITH BRONZE ALUMINUM FRAME.
- E PROPOSED TILE WOOD-SIDING.

- F 1/2" THICK TEMPERED GLASS GUARDRAIL WITH 1" BUTT JOINT BETWEEN GLASS AS MANUFACTURED BY NEO METAL GLASS, GRS GLASS SYSTEM OR EQUALS MOUNTED @ 42" A.F.F.

- G IMPACT RESISTANT GLAZING SLIDING DOOR WITH BRONZE ALUMINUM FRAME.

- H IMPACT RESISTANT GARAGE DOOR

- I IMPACT RESISTANT CASEMENT WINDOW WITH BRONZE ALUMINUM FRAME.

- J 5 FEET HEIGHT DECORATIVE ALUMINUM SCREEN

**DRC**

PZ24-12000021

08/06/2025

1/4" = 1'-0"