

TYLER FUQUA CREATIONS PRESENTS...

POMPANO BEACH UNDERWATER SCULPTURE PROJECT

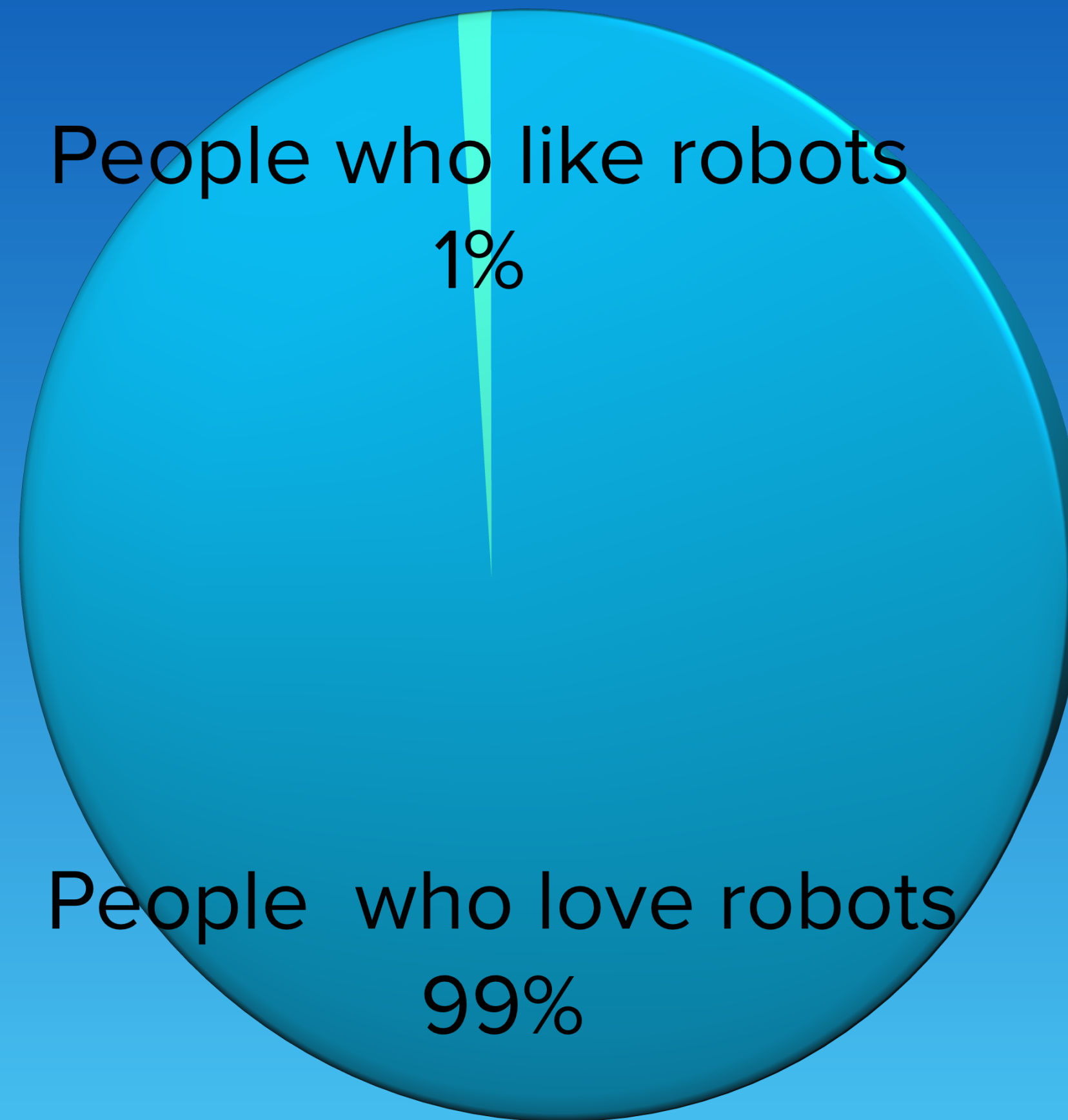
MECHAN H2O

WHAT IS MECHAN H2O?

Mechan H2O is our fifth robot in the Mechan series and will be our smallest robot to date. Standing 6-7' tall, it is an underwater explorer complete with an old school diving helmet and air tank.

It will be primarily made with at least 1/4" thick steel with stainless steel accents. The helmet, shoulder, hips, elbows, and knees will be hollow to create places for creatures to live and explore. It will stand on a thick, gear-shaped steel plate for stability and easy land installation. The leg will be hollow to allow for underwater installation. The robot will be holding an ancient stainless steel trident that will not only look awesome but will add additional support.

HOW WILL PEOPLE REACT TO MECHAN H2O?



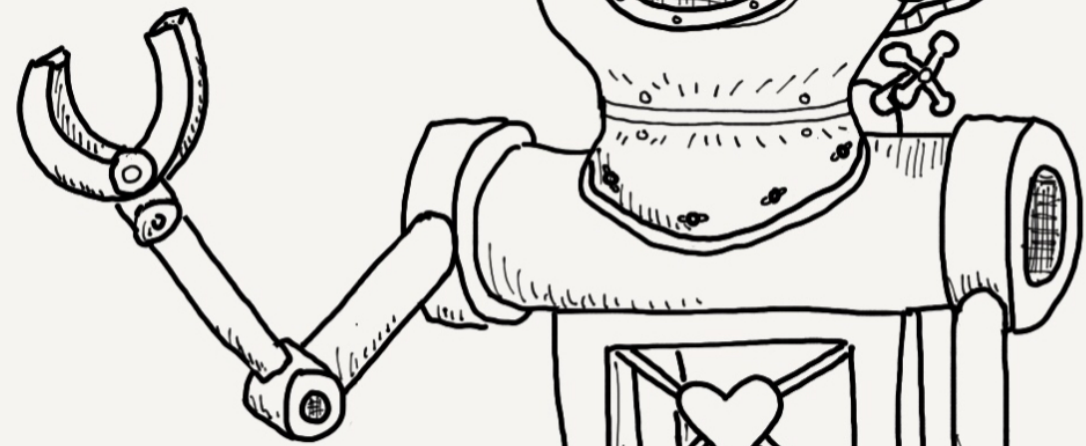
ORIGINAL CONCEPT DRAWING

Tyler FuQue Creations
Mechan H₂O (working title)
The Underwater Exploration Robot

Fish can enter the head through multiple opening
* Turtle safe sizing

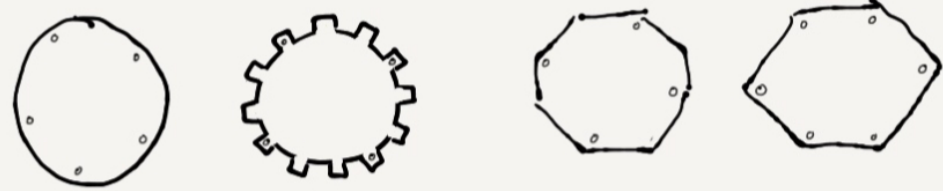
Robot made of at least 1/4" steel

Helmet + body cavities are open to allow places for creatures to live + hide

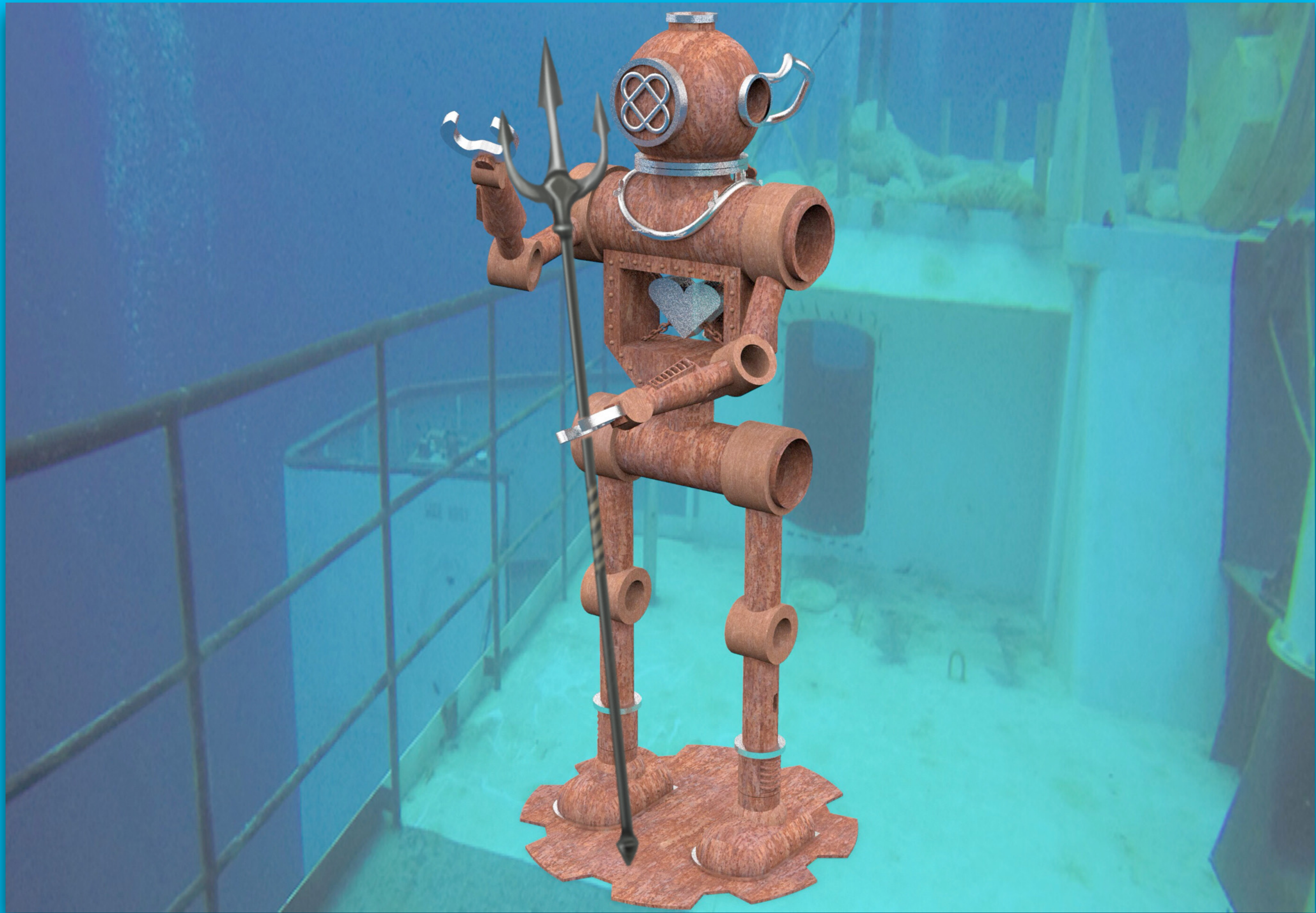


Attachment in leg.
Hoping to slide OVER the receiving post. Will cut out a slot to ensure a precise fit.

Other base options all about 2' x 2'



2' x 2' x 1/2" thick steel plate





Perspective



Perspective



Front



Left



TIMELINE

- Upon receiving first payment - Send drawings to the engineer, once the specs are called out we will begin to order the custom steel parts.
- **During the next month we will:**
- Being fabrication of the main steel parts.
- Inspections if required.
- Order the stainless steel accents.
- **During the following month we will:**
- Complete the main fabrication and finishing process.
- Install stainless steel accents.
- Prepare the artwork for shipping.
- We plan on finishing this within two months assuming there aren't any major delays.

BUDGET

Mechan H2O	
Steel	1300
Stainless steel	1200
Fasteners	100
Welding supplies	250
Plasma cutter consumables	150
Blades and bits	100
Metal rolling	2000
Laser cutting	1500
Water Jet	1500
Plasma Cutting	1000
Engineering	1000
CAD drawings	500
Inspections	1000
Art transport	3500
Crew travel - flight and car rental	1300
Crew accommodations	1200
Insurance	1500
Shop rent and utilities	3600
Contingency	2000
Labor	5050
Artist Fee	5250
	35000

**WE ARE VERY EXCITED TO CREATE THE NEXT
MEMBER OF OUR MECHAN FAMILY FOR THE PEOPLE
(AND SEA CREATURES) OF POMPANO BEACH.**

TYLER FUQUA CREATIONS