

Proposed locations for the installation of The Trail of Honey Bees Mosaics

Presented by the Public Art Committee & Lead Artist Sonata Kazimieraitiene



Example of “Pillar” to be used.

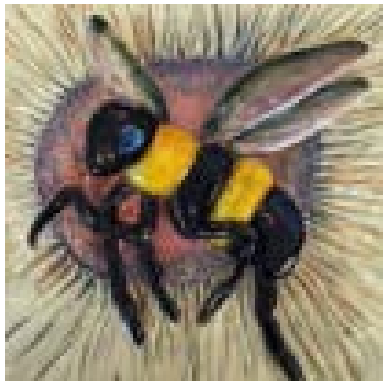


731 NW 3rd St
1'x1' 1 pc

#5



731 NW 3rd St
6"x 6" 1 pc



#13



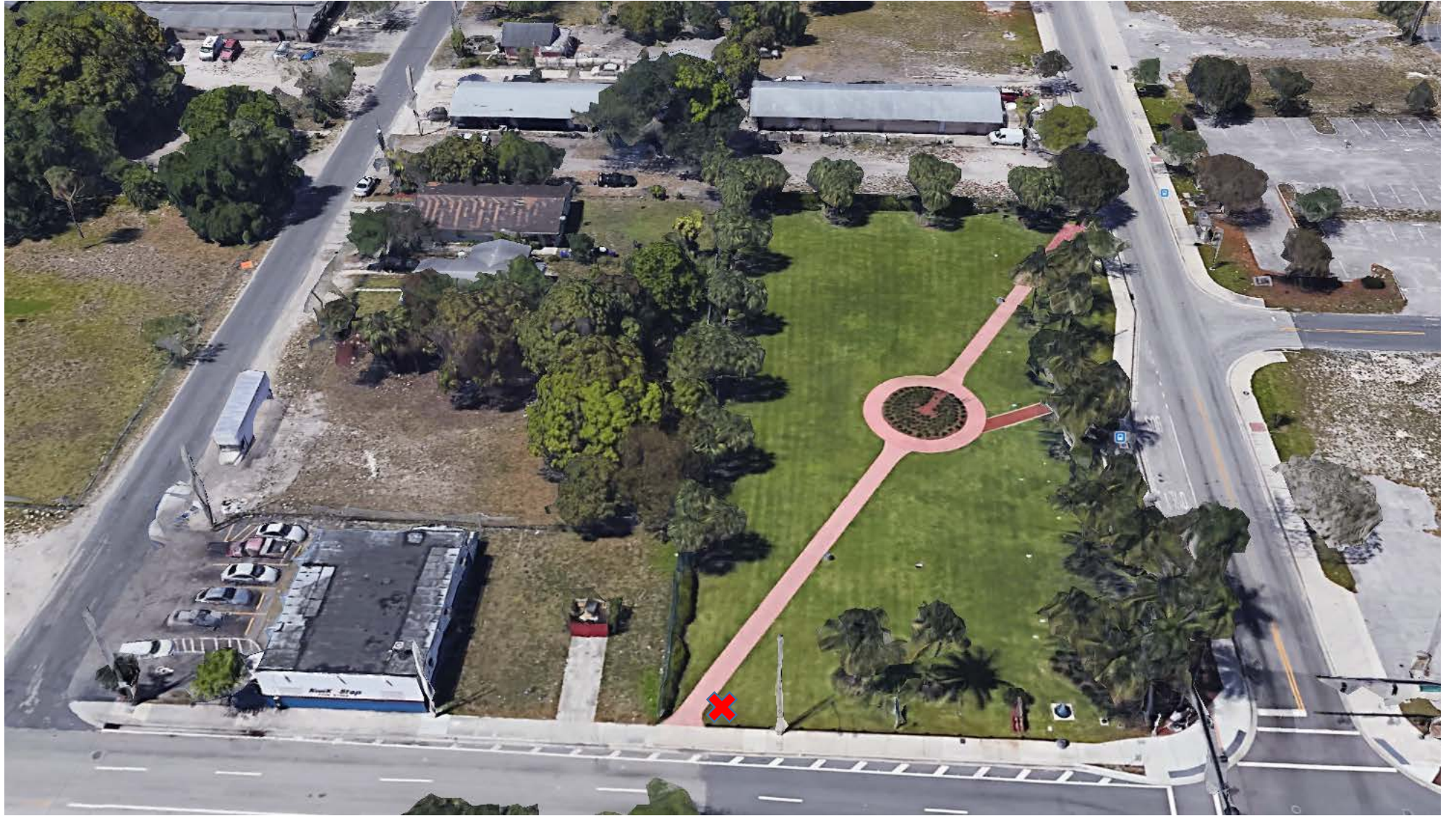
731 NW 3rd St
6"x 6" 1 pc

#7



Annie Adderly
Gillis Park
On a pillar
6"x6" 1 pc

#2



Front of E. Pat Larkins
On Street by Bench
Pillar 6"x6" 1 pc

#1



Ali Cultural Arts
Center
3'x3' 1 pc

#3



Ali Building (big gate)

1' x 1'

#7



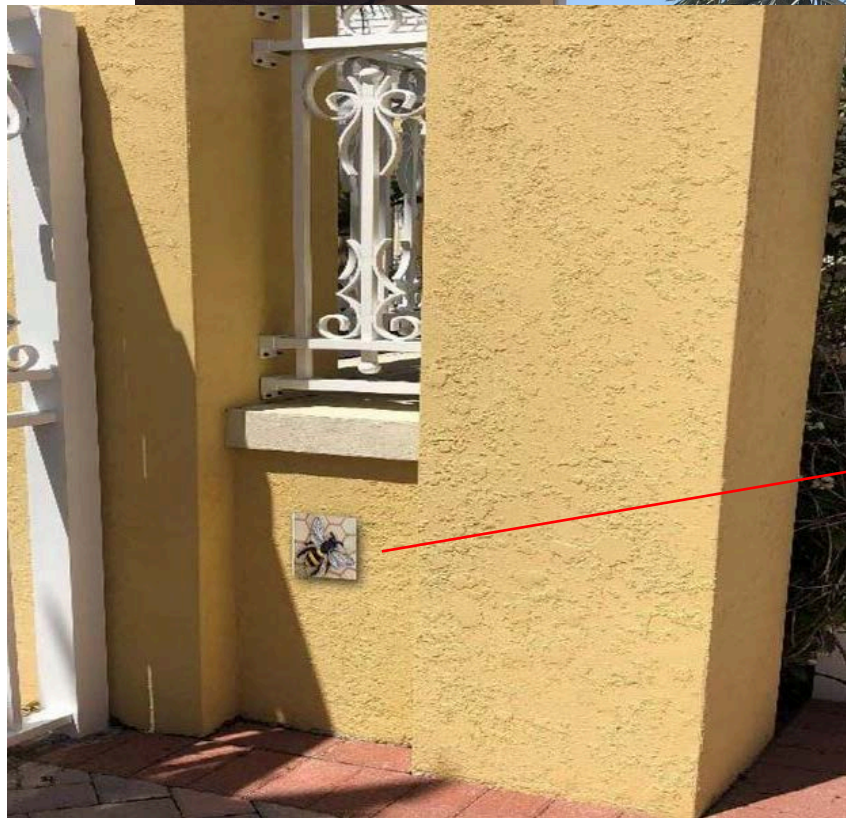
#9



Ali inside Courtyard

6"x6" 1 pc

#10



West Side of Broward Transit Center along
Dixie Highway and Dr. Martin Luther King Jr.
Blvd.

Pillar 6"x6" 1 pc



North Side of Dr. Martin Luther King Jr. Blvd. and
Dixie Highway across from Transit Center

Pillar 6"x6" 1 pc

#3



3rd St. and Flagler Ave. by Ward's
City

Pillar 6"x6" 1 pc

#16



NW Corner of 2nd St. &
1st Ave.

Pillar 6"x6" 1 pc

#14



1st Ave. & 2nd St.
(165 NE 1 AVE)
1'x1' 2 pc

#4



#3



In Front of Holy Cross Family
Medical Center located at 114
N. Flagler Ave.

Pillar 6"x6" 1 pc

#9



In front of Bank located at
61 NE 1st Ave.

Pillar 6"x6" 1 pc

#12



Bailey
Contemporary Arts
1'x1' 1 pc

#1



Bailey Contemporary Arts Back of Building (Artists Alley)

3'x3' 2 pc

#1



#2



By the front door of Blooming Bean. Building owned by Bailey (Owned by CRA)

1' x 1'



#10

50 NE 1st St.
1'x1' 1pc

#6



Civic Plaza
Pillar 6"x6" 1 pc

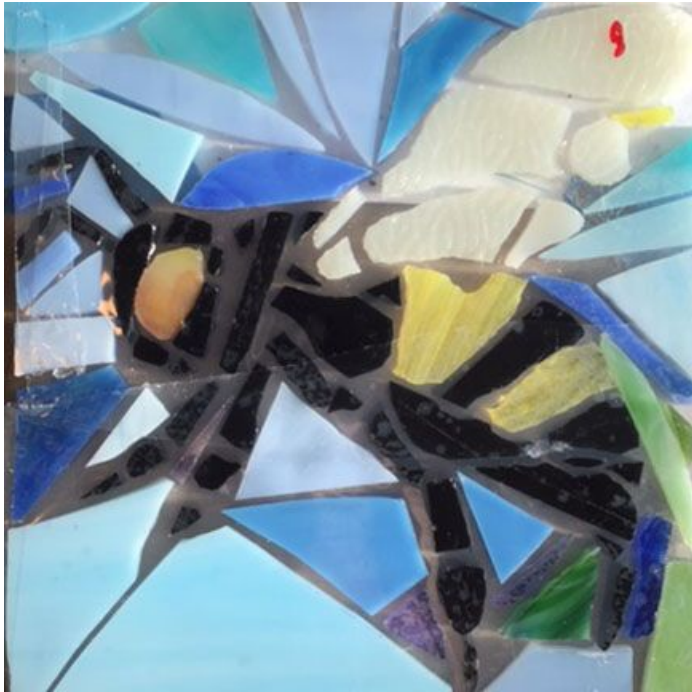
#6



North side of Atlantic Blvd.
and 1st Ave.

Pillar 6"x6" 1 pc

#8



Southwest Corner of SW 1st Ave. & Atlantic Blvd.

Pillar 6"x6" 1 pc

#4



Southeast Corner of SW 1st Ave. & Atlantic Blvd.

Pillar 6"x6" 1 pc

#5



Cultural Arts Center

Pillar 6"x6" 1 pc

#17



Cultural Arts Center
Pillar 6"x6" 1 pc

#15



City Hall North Entrance

2'x3' 1 pc

#3



City Hall Northwest Side Entrance

2'x3' 1 pc

#4



City Hall South Entrance

2'x3' 1 pc

#2



City Hall South Entrance

2'x3' 1 pc

#1



Side door on south side of Commission Chambers building
1' x 1'



#2



Alternate:

Northern Front door on
east side of
Commission Chambers

1' x 1'



#8

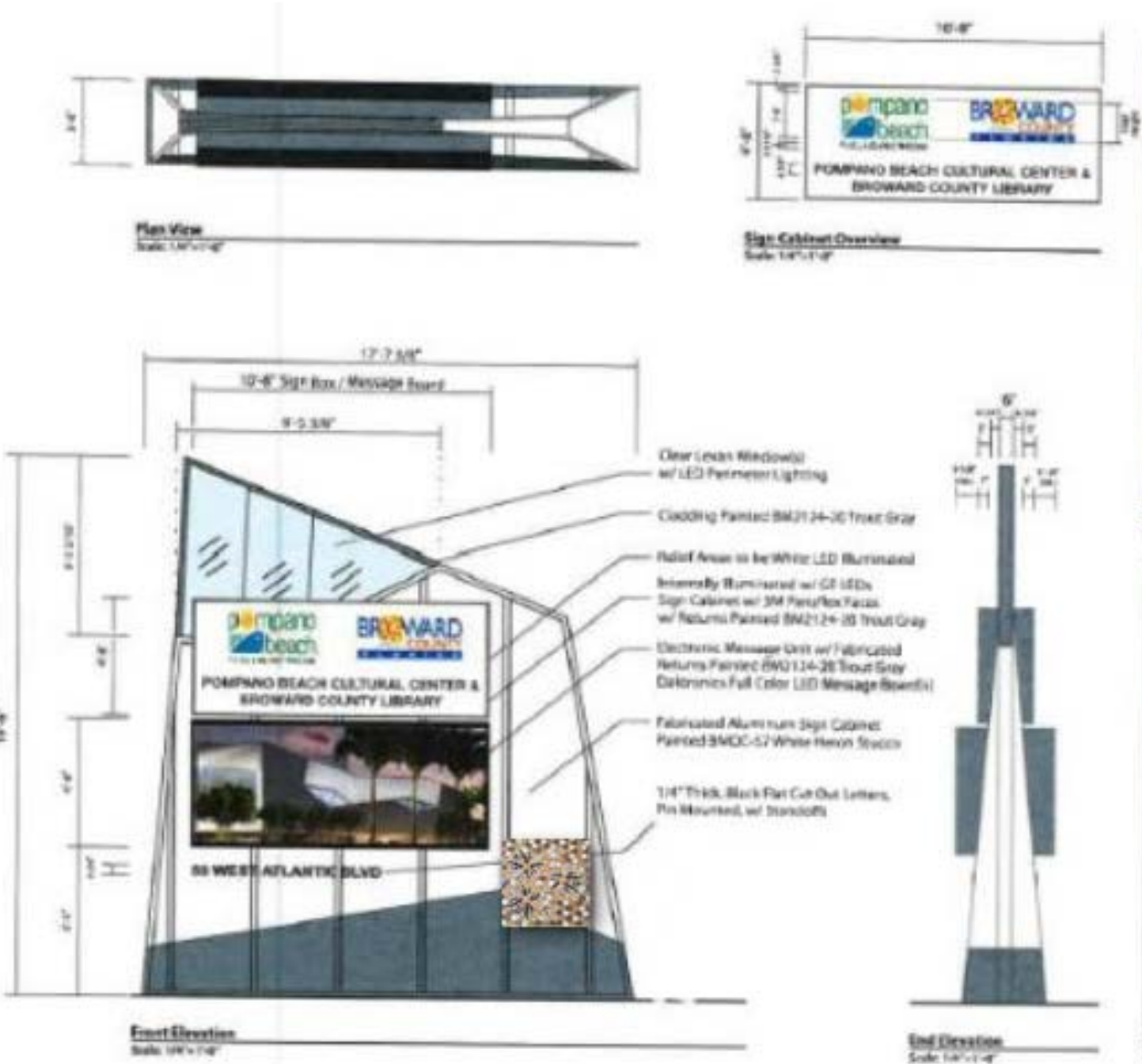


Cultural Arts
Center Sign

3'x3' 1 pc

THIS MOSAIC
LOCATION IS
TENTATIVE TO THE
SIGN AND MAY
CHANGE PER THE
DISCRETION OF
THE PUBLIC ART
COMMITTEE AND
ARTIST.

#4



Overview - Daytime Render
Scale: 1/12



Overview - Nighttime Render
Scale: 1/12