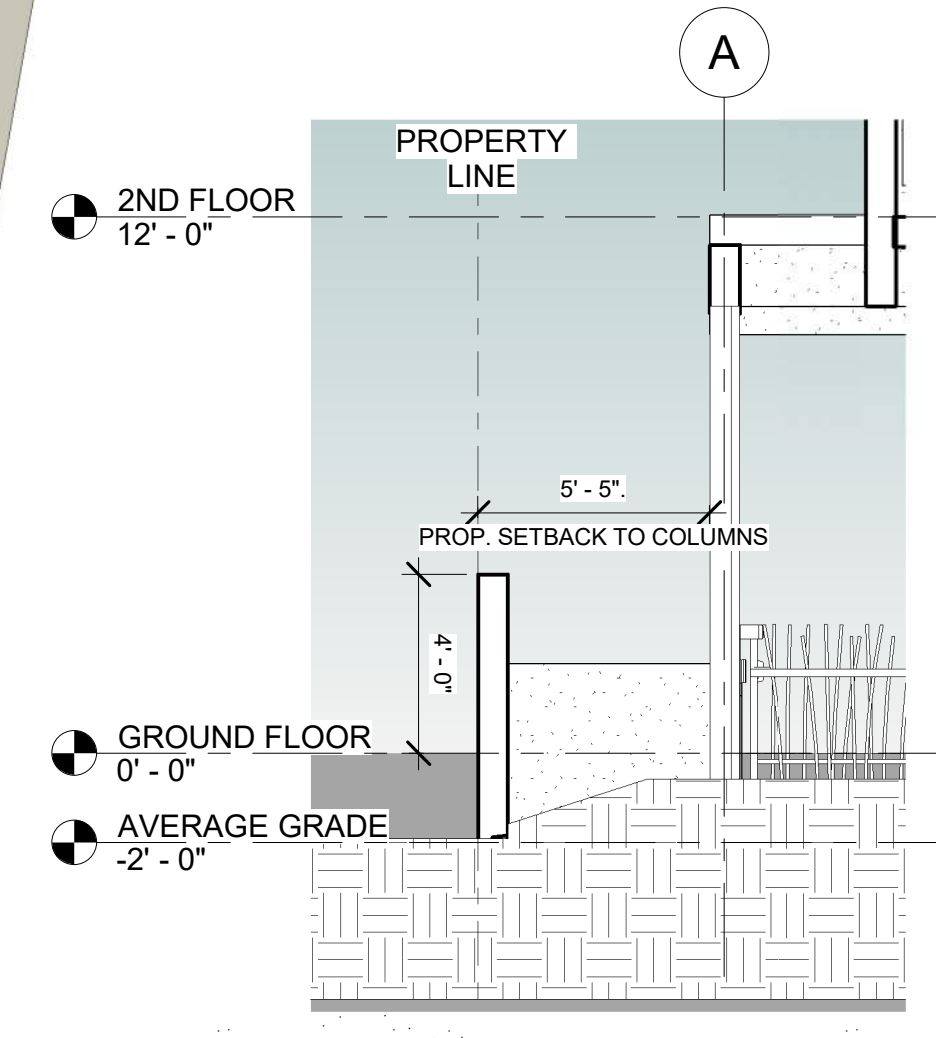


3 FPL TX. DETAIL
3/8" = 1'-0"

GREEN PRACTICES

- THE BUILDING WILL STRIVE TO ACHIEVE THE HIGHEST FGBC DESIGNATION POSSIBLE FOR THIS TYPE OF BUILDING
- 1- ALL ENERGY STAR APPLIANCES. ALL PERMANENT APPLIANCES IN THE RESIDENCE THAT CAN BE ENERGY STAR RATED MUST BE SO RATED TO CLAIM THIS ITEM. (THIS INCLUDES REFRIGERATOR, STOVE, WASHING MACHINE, DRYER, ETC.) ITEMS NOT COVERED ARE COUNTERTOP APPLIANCES SUCH AS TOASTERS, MIXERS ETC.) ENERGY STAR APPLIANCES MUST BE VERIFIED BY BUILDING INSPECTOR ON SITE AT FINAL INSPECTION.
 - 2- NO SHOWER WITH MORE THAN ONE SHOWER HEAD, AND ALL LOW FLOW SHOWER HEADS. LOW FLOW SHOWER HEADS ARE RATED AT A MAXIMUM FLOW OF 2.5 GALLONS PER MINUTE AT 80 PSI WATER PRESSURE. ONE SHOWER HEAD PER SHOWER AND LOW FLOW SHOWER HEADS MUST BE SHOWN ON PLUMBING PLANS AND VERIFIED BY PLUMBING INSPECTOR ON SITE AT FINAL INSPECTION.
 - 3- RECYCLING. A DEDICATED STORAGE AREA FOR A GARBAGE BIN AND A RECYCLE BIN, SIZED TO FIT BOTH, MUST BE SHOWN ON THE PLANS. DEDICATED STORAGE AREA SHALL BE VERIFIED BY PLANS EXAMINER. PLANS FOR KITCHEN MUST INCLUDE PULL-OUT RECYCLE AND GARBAGE BINS BUILT INTO CABINETS. PULL-OUT BINS BUILT INTO CABINETS SHALL BE VERIFIED BY PLANS EXAMINER AT PERMIT REVIEW AND BY BUILDING INSPECTOR AT FINAL INSPECTION.
 - 4- ENERGY EFFICIENT (LOW E) WINDOWS. ALL WINDOWS SHALL CONFORM TO THE ENERGY STAR RATING CRITERIA FOR SOUTH FLORIDA AS APPROVED BY THE NFRC (NATIONAL FENESTRATION RATING COUNCIL).
 - 5- ENERGY EFFICIENT DOORS. ALL DOORS SHALL CONFORM TO THE ENERGY STAR RATING CRITERIA FOR SOUTH FLORIDA.
 - 6- ENERGY STAR APPROVED ROOFING MATERIALS.
 - 7- PROGRAMMABLE THERMOSTATS.
 - 8- DUAL FLUSH TOILETS. THESE TOILETS WHEN FLUSHED USE LESS THAN ONE GALLON TO FLUSH LIQUID AND 1.6 GALLONS OR LESS FOR SOLIDS (USGBC). PLANS SHALL INDICATE DUAL FLUSH TOILET. SYSTEM MUST BE VERIFIED BY PLUMBING INSPECTOR AT FINAL INSPECTION.
 - 9- AT LEAST 80% OF PLANTS, TREES AND GRASSES PER THE SOUTH FLORIDA WATER MANAGEMENT DISTRICT RECOMMENDATIONS (LATEST EDITION). LANDSCAPE PLAN, REVIEWED AND APPROVED BY A LANDSCAPE ARCHITECT, SHALL BE SUBMITTED WITH PERMIT APPLICATION. LANDSCAPING SHALL BE VERIFIED BY INSPECTION PRIOR TO FINAL CERTIFICATE OF OCCUPANCY.
 - 10- ALL ENERGY-EFFICIENT OUTDOOR LIGHTING. SUGGESTED LIGHTS FOR OUTDOOR SPACES INCLUDE FLUORESCENT BULBS AND FIXTURES WITH ELECTRONIC BALLASTS (MORE EFFICIENT THAN MAGNETIC TYPES), LOW PRESSURE SODIUM OR MERCURY VAPOR, PHOTOVOLTAIC SYSTEMS, LED LIGHTING AND LOW VOLTAGE LANDSCAPE LIGHTS THAT RUN ON A TIMER. ALL ENERGY-EFFICIENT OUTDOOR LIGHTING SHALL BE VERIFIED BY ELECTRICAL INSPECTOR AT FINAL INSPECTION.
 - 11- ENERGY PERFORMANCE AT LEAST 10% MORE EFFICIENT THEN STANDARD ESTABLISHED BY ASHRAE (LATEST EDITION). CALCULATIONS SHALL BE SUBMITTED WITH PERMIT APPLICATION.
 - 12- ROUGH-IN PLUMBING FOR FUTURE SOLAR HOT WATER SYSTEM. THIS ITEM IS NOT AVAILABLE IF A SOLAR HOT WATER SYSTEM IS INSTALLED AT INITIAL CONSTRUCTION. THE ROUGH-IN MUST CONSIST OF RUNNING COPPER OR CPVC PIPING UP THROUGH THE ROOF AT A SOUTH FACING ROOF. THE PENETRATION SHOULD BE PROPERLY SEALED. ROUGH-IN PLUMBING SHALL BE SHOWN ON PLANS AND VERIFIED BY PLUMBING INSPECTOR ON SITE AT FINAL INSPECTION.
 - 13- ALL HOT WATER PIPES INSULATED. ALL HOT WATER PIPES SHALL HAVE A MINIMUM OF ONE-HALF INCH INSULATION, INCLUDING BURIED PIPES. (CPVC IS NOT A SUITABLE REPLACEMENT FOR INSULATION.) ALL HOT WATER PIPES INSULATED SHALL BE SHOWN ON PLANS AND VERIFIED BY PLUMBING INSPECTOR ON SITE AT FINAL INSPECTION.
 - 14- MERV OF AIR FILTERS ON ALL AIR CONDITIONING UNITS AT LEAST 8 WITH ANTI-MICROBIAL AGENT. MERV OF AT LEAST 8 SHALL BE VERIFIED BY MECHANICAL INSPECTOR ON SITE AT FINAL INSPECTION.
 - 15- TANKLESS WATER HEATER IN LIEU OF A STANDARD TANK WATER HEATER. DOCUMENTATION OF ENERGY SAVINGS MUST BE PROVIDED. PRODUCT APPROVALS SHOULD BE PROVIDED WITH PLANS AND SHALL INDICATE TOTAL ENERGY DEMAND. TANKLESS WATER HEATER SHALL BE SHOWN ON PLANS AND SHALL PASS ALL REQUIRED INSPECTIONS.
 - 16- ELECTRIC VEHICLE-CHARGING-STATION INFRASTRUCTURE.



2 SIDE WALL DETAIL
1/4" = 1'-0"

1 GROUND FLOOR
1/8" = 1'-0"

Note: To the best of the architect's or engineer's knowledge, the plans and specifications comply with the applicable minimum building codes and the applicable fire-safety standards as determined by the local authority in accordance with this section and chapter 633, Florida Statutes

All overhead utilities will be buried for this project as per 155.5509