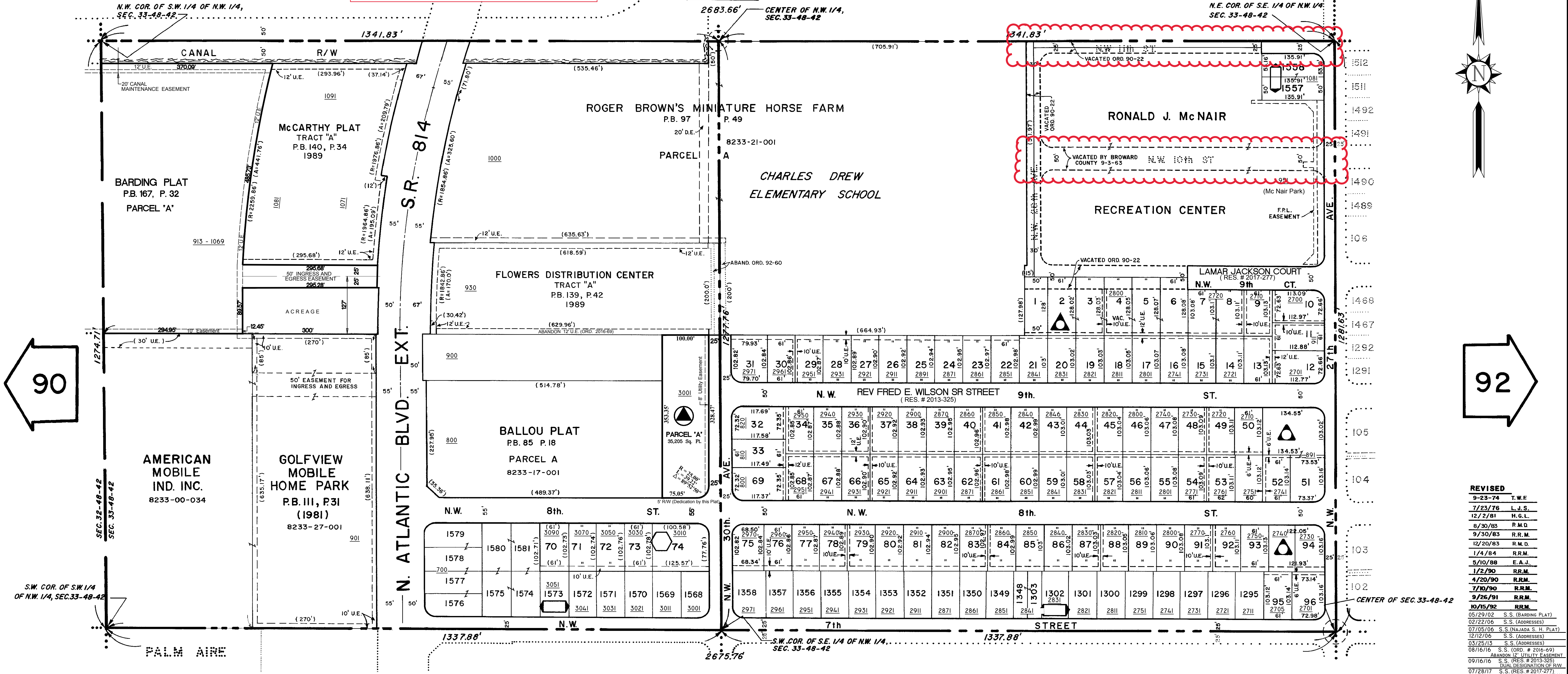
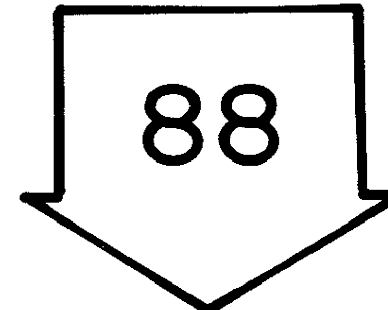
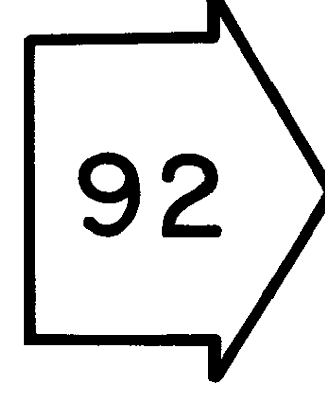
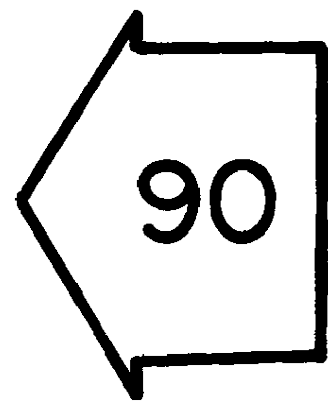
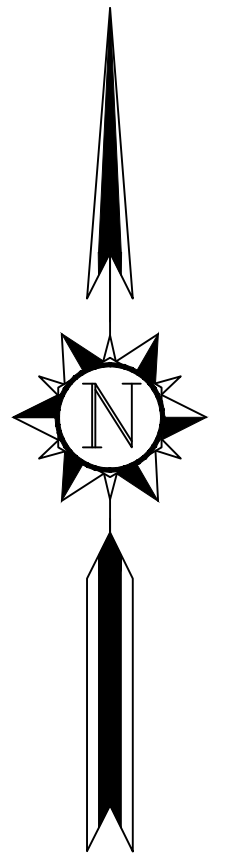
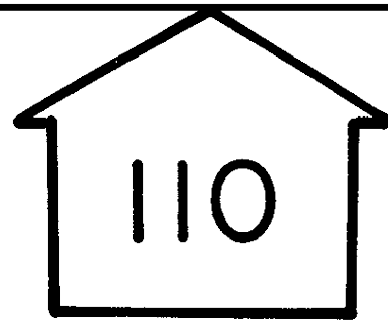


EXHIBIT "B"



REVISED

9-23-74	T.W.F.
7/23/76	L.J.S.
12/2/81	H.G.L.
9/30/83	R.M.Q.
9/20/83	R.R.M.
12/20/83	R.M.D.
1/4/84	R.R.M.
5/10/88	E.A.J.
1/2/90	R.R.M.
4/20/90	R.R.M.
7/10/90	R.R.M.
9/25/91	R.R.M.
10/15/92	R.R.M.
05/29/02	S.S. (BARDING PLAT)
02/22/06	S.S. (ADDRESSES)
07/05/06	S.S. (NAJADA S.H. PLAT)
12/12/06	S.S. (ADDRESSES)
03/25/13	S.S. (ADDRESSES)
08/16/16	S.S. (ORD. # 2016-69)
09/16/16	S.S. (RES. # 2013-325)
07/28/17	S.S. (RES. # 2017-277)
08/29/18	S.S. (Address #270, Lot 7)

- COLLIER CITY ADDITION P.B. 73, P. 47 (1971) 8233-11
- COLLIER CITY ADDITION NO. 3 P.B. 74, P. 50 (1972) 8233-13
- COLLIER CITY, UNRECORDED (STREET R/W RECORDED IN MISC. P.B. 2, P. 21, 27; 1962)
- NAJADA SENIOR HOUSING PLAT P.B. 174, P. 192 (2005)

- NOTES:**
- ALL ROUNDED STREET CORNER R/W RADII ARE 25' UNLESS OTHERWISE SPECIFIED.
 - DRAINAGE (D.E.) AND UTILITY (U.E.) EASEMENTS ARE SHOWN AS DASHED LINES.
 - CITY LIMITS SHOWN THUS: (SHADING LIES ENTIRELY OUTSIDE)
 - STREET ADDRESSES SHOWN THUS: 1234
 - DISTANCES SHOWN IN ITALICS ARE FROM CHARLTON SURVEY (BROWARD CO., 1927). DISTANCES AND ANGLES IN PARENTHESES ARE FROM REGISTERED ENGINEERS AND SURVEYORS.
 - DASHED R/W LINES INDICATE R/W CLAIMED BY THE CITY FOR WHICH IT HAS NO DEEDS (BASE BUILDING LINES).

CITY OF POMPANO BEACH, FLA.
OFFICE OF CITY ENGINEER
MAP NO. 91

S. 1/2 OF N.W. 1/4, SEC. 33, TWP. 48S., R. 42E.

DRAWN BY: L.J.S. DATE: 9/13/73
 (FOR REVISION DATES, SEE ABOVE)

SCALE: