

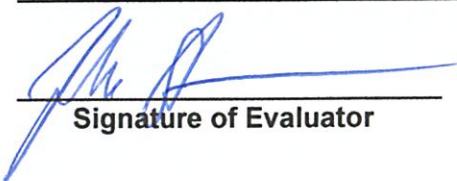
RLI26-006 - CONTINUING CONTRACT FOR PROFESSIONAL STRUCTURAL ENGINEERING SERVICES - CCNA

Proposer CONEMES

SECTION NUMBER AND DESCRIPTION		POINTS	SCORE
1	Prior experience of the firm with projects of similar size and complexity:	0-15	0
2	Qualifications of personnel, including subconsultants:	0-15	10
3	Proximity of the nearest office to the project location:	0-15	10
4	Current and Projected Workload	0-15	12
5	Demonstrated Prior Ability to Complete Project on Time	0-15	12
6	Demonstrated Prior Ability to Complete Project on Budget	0-15	12
7	Local Vendors Program	0-5	Completed by Procurement
TOTAL		95	

COMMENTS:

DAVE. MIX OF STRUCTURAL ENGINEERING WORK
(CALCS, DESIGNS, ASSESSMENTS, REPORTS, CEI, ETC.)
CURRENTLY WORKING ON \$14M RE-ROOF PROJECT FOR
MIAMI INTERNATIONAL AIRPORT. & \$1.2M MIAMI CONDOMINIUM.
THEY DID PROVIDE CURRENT & PROJECTED WORKLOADS.
NO PRIOR EXPERIENCE WITH POMRANO.



Signature of Evaluator

3/11/26

Date

JOHN SPANOU

Printed Name

RLI26-006 - CONTINUING CONTRACT FOR PROFESSIONAL STRUCTURAL ENGINEERING SERVICES - CCNA

Proposer EAC

SECTION NUMBER AND DESCRIPTION		POINTS	SCORE
1	Prior experience of the firm with projects of similar size and complexity:	0-15	12
2	Qualifications of personnel, including subconsultants:	0-15	12
3	Proximity of the nearest office to the project location:	0-15	10
4	Current and Projected Workload	0-15	15
5	Demonstrated Prior Ability to Complete Project on Time	0-15	13
6	Demonstrated Prior Ability to Complete Project on Budget	0-15	13
7	Local Vendors Program	0-5	Completed by Procurement
TOTAL		95	

COMMENTS:

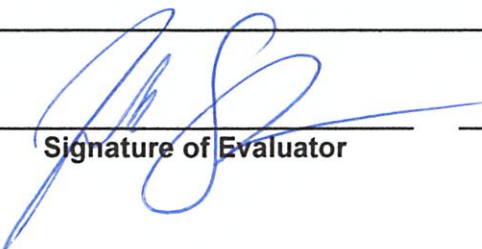
FT. LAUDERDALE. FOOT BRIDGE REPLACEMENT PROJECTS.

PRIOR WORK IN POMPANO INCLUDES N.W. PUMP STATIONS 65

& 81, as well as HILLSBORO INLET SEAWALL REPLACEMENT.

THEIR STRUCTURAL LEADS HAVE IMPRESSIVE RESUMES. PROVIDED

A DETAILED SUBMITTAL.



 Signature of Evaluator

5/11/26

 Date

JOHN SPINAKOULOS

 Printed Name

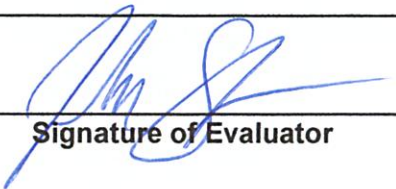
RLI26-006 - CONTINUING CONTRACT FOR PROFESSIONAL STRUCTURAL ENGINEERING SERVICES - CCNA

Proposer HBC

SECTION NUMBER AND DESCRIPTION		POINTS	SCORE
1	Prior experience of the firm with projects of similar size and complexity:	0-15	0
2	Qualifications of personnel, including subconsultants:	0-15	10
3	Proximity of the nearest office to the project location:	0-15	10
4	Current and Projected Workload	0-15	10
5	Demonstrated Prior Ability to Complete Project on Time	0-15	10
6	Demonstrated Prior Ability to Complete Project on Budget	0-15	10
7	Local Vendors Program	0-5	Completed by Procurement
TOTAL		95	

COMMENTS:

FL. LAUDERDALE. BROAD RANGE OF MUNICIPAL STRUCTURAL NEEDS
(bridges, seawalls, buildings, condition surveys, G&E, ETC.).
I LIKED THEIR PROPOSAL, DETAILED TECHNICAL APPROACH WITH
DIVERSE PROJECT LIST. I PERSONALLY DON'T HAVE ANY
EXPERIENCE WITH THEM AND NO PRIOR WORK HISTORY IN
POMPAHO.


 Signature of Evaluator

3/11/26
 Date

JOHN SANOPOURIS
 Printed Name

RLI26-006 - CONTINUING CONTRACT FOR PROFESSIONAL STRUCTURAL ENGINEERING SERVICES - CCNA

Proposer KIMLEY-HORN

SECTION NUMBER AND DESCRIPTION		POINTS	SCORE
1	Prior experience of the firm with projects of similar size and complexity:	0-15	15
2	Qualifications of personnel, including subconsultants:	0-15	15
3	Proximity of the nearest office to the project location:	0-15	10
4	Current and Projected Workload	0-15	13
5	Demonstrated Prior Ability to Complete Project on Time	0-15	15
6	Demonstrated Prior Ability to Complete Project on Budget	0-15	15
7	Local Vendors Program	0-5	Completed by Procurement
TOTAL		95	

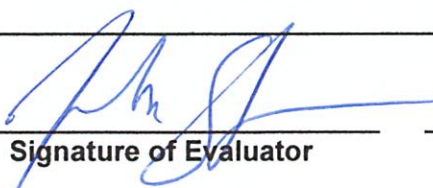
COMMENTS:

EXCELLENT SUBMITTAL.

DIVERSE PROJECT LIST.

PRIOR WORK EXPERIENCE WITH POMPANO ON

NUMEROUS PROJECTS.

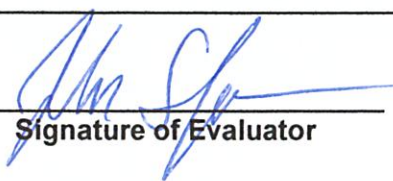
 3/11/26 JOHN STROPOULOS
Signature of Evaluator Date Printed Name

RLI26-006 - CONTINUING CONTRACT FOR PROFESSIONAL STRUCTURAL ENGINEERING SERVICES - CCNA

Proposer R.J. BEHAR

SECTION NUMBER AND DESCRIPTION		POINTS	SCORE
1	Prior experience of the firm with projects of similar size and complexity:	0-15	10
2	Qualifications of personnel, including subconsultants:	0-15	10
3	Proximity of the nearest office to the project location:	0-15	10
4	Current and Projected Workload	0-15	10
5	Demonstrated Prior Ability to Complete Project on Time	0-15	10
6	Demonstrated Prior Ability to Complete Project on Budget	0-15	10
7	Local Vendors Program	0-5	Completed by Procurement
TOTAL		95	

COMMENTS: *Pembroke Pines.*
Prior work history with Pompano (Lyon's PK & Indian Mound & Hillsboro Inlet PK seawall repairs & SW 36th Ave Pedestrian Mobility Improvements). Several structural projects listed included bridges, boat ramps, 40-year recents, a pump house building, etc.). Good submittal



 Signature of Evaluator

3/11/26

 Date

JOHN SAROPOULOS

 Printed Name



EVALUATION CRITERIA

Procurement & Contracts Department

RLI26-006 - CONTINUING CONTRACT FOR PROFESSIONAL STRUCTURAL ENGINEERING SERVICES - CCNA

Proposer RITZEL-MASON

SECTION NUMBER AND DESCRIPTION		POINTS	SCORE
1	Prior experience of the firm with projects of similar size and complexity:	0-15	0
2	Qualifications of personnel, including subconsultants:	0-15	0
3	Proximity of the nearest office to the project location:	0-15	0
4	Current and Projected Workload	0-15	0
5	Demonstrated Prior Ability to Complete Project on Time	0-15	0
6	Demonstrated Prior Ability to Complete Project on Budget	0-15	0
7	Local Vendors Program	0-5	Completed by Procurement
TOTAL		95	

COMMENTS:

SUBMITTED INCORRECT

RLI SOLICITATION.

Signature of Evaluator

3/11/26

Date

JOHN STAMPOULOS

Printed Name

RLI26-006 - CONTINUING CONTRACT FOR PROFESSIONAL STRUCTURAL ENGINEERING SERVICES - CCNA

Proposer TECTONIC GROUP

SECTION NUMBER AND DESCRIPTION		POINTS	SCORE
1	Prior experience of the firm with projects of similar size and complexity:	0-15	0
2	Qualifications of personnel, including subconsultants:	0-15	10
3	Proximity of the nearest office to the project location:	0-15	10
4	Current and Projected Workload	0-15	10
5	Demonstrated Prior Ability to Complete Project on Time	0-15	10
6	Demonstrated Prior Ability to Complete Project on Budget	0-15	10
7	Local Vendors Program	0-5	Completed by Procurement
TOTAL		95	

COMMENTS:

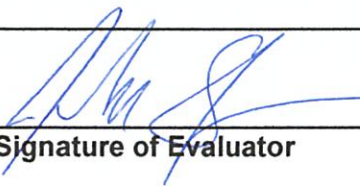
MOSTLY C.E.I. & RECEIPTS. LIMITED

STRUCTURAL RELATED DESIGN PROJECTS. NO

PRIOR WORK HISTORY WITH POMPANO.

MEDIOCRE SUBMITTAL. PROJECT OFFICE LOCATION

IN POMPANO.



 Signature of Evaluator

3/11/26

 Date

JOHN SFIROPOULOS

 Printed Name

RLI26-006 - CONTINUING CONTRACT FOR PROFESSIONAL STRUCTURAL ENGINEERING SERVICES - CCNA

Proposer Conemco Engineering, Inc.

SECTION NUMBER AND DESCRIPTION		POINTS	SCORE
1	Prior experience of the firm with projects of similar size and complexity:	0-15	11
2	Qualifications of personnel, including subconsultants:	0-15	12
3	Proximity of the nearest office to the project location:	0-15	14
4	Current and Projected Workload	0-15	9
5	Demonstrated Prior Ability to Complete Project on Time	0-15	11
6	Demonstrated Prior Ability to Complete Project on Budget	0-15	10
7	Local Vendors Program	0-5	Completed by Procurement
TOTAL		95	

COMMENTS:

The firm demonstrates relevant structural engineering experience within South Florida, including municipal and institutional projects such as schools, infrastructure improvements, seawall design, and structural inspections. Key personnel are licensed professionals with experience in structural design and inspection services.

The firm's proximity to the City of Pompano Beach is advantageous for coordination and response to task orders. However, many projects listed are smaller in scope or inspection-focused rather than large structural design projects of comparable complexity. Additionally, the proposal lists a significant number of ongoing assignments, which may affect staff availability for future task orders under this continuing contract.

Overall, Conemco Engineering appears qualified but may rank as a low to mid-tier proposer compared with firms with larger structural design portfolios.


Signature of Evaluator

3/9/2026

Date

Hector R. Gandia

Printed Name

RLI26-006 - CONTINUING CONTRACT FOR PROFESSIONAL STRUCTURAL ENGINEERING SERVICES - CCNA

Proposer EAC Consulting, Inc.

SECTION NUMBER AND DESCRIPTION		POINTS	SCORE
1	Prior experience of the firm with projects of similar size and complexity:	0-15	14
2	Qualifications of personnel, including subconsultants:	0-15	15
3	Proximity of the nearest office to the project location:	0-15	15
4	Current and Projected Workload	0-15	12
5	Demonstrated Prior Ability to Complete Project on Time	0-15	14
6	Demonstrated Prior Ability to Complete Project on Budget	0-15	14
7	Local Vendors Program	0-5	Completed by Procurement
TOTAL		95	

COMMENTS:

EAC Consulting, Inc. demonstrates extensive experience providing structural engineering services for municipal and transportation infrastructure projects throughout South Florida (North Miami, FPL, USACE, COPB, Dania, etc.). The firm has over three decades of experience and maintains multiple Florida offices, including a Fort Lauderdale office that will support this contract. Their project portfolio includes complex bridge design, structural assessments, seawall projects, and municipal infrastructure improvements.

The proposed project team includes highly qualified structural engineers with extensive experience in bridge and infrastructure design. The team also includes several specialized subconsultants providing geotechnical, environmental, surveying, and public involvement services, which strengthens the firm's ability to support multidisciplinary municipal projects.

Overall, EAC appears highly qualified for this continuing services contract due to the scale of their structural engineering portfolio and experienced technical staff. The presentation was very well put together, providing the necessary documentation.


Signature of Evaluator

3/9/2026

Date

Hector R. Gandia

Printed Name

RLI26-006 - CONTINUING CONTRACT FOR PROFESSIONAL STRUCTURAL ENGINEERING SERVICES - CCNA

Proposer HBC Engineering Company

SECTION NUMBER AND DESCRIPTION		POINTS	SCORE
1	Prior experience of the firm with projects of similar size and complexity:	0-15	11
2	Qualifications of personnel, including subconsultants:	0-15	12
3	Proximity of the nearest office to the project location:	0-15	14
4	Current and Projected Workload	0-15	12
5	Demonstrated Prior Ability to Complete Project on Time	0-15	12
6	Demonstrated Prior Ability to Complete Project on Budget	0-15	12
7	Local Vendors Program	0-5	Completed by Procurement
TOTAL		95	

COMMENTS:

HBC Engineering Company demonstrates experience providing structural engineering services for municipal and infrastructure projects throughout South Florida, including seawall replacement, bridge-related work, structural inspections, and facility assessments. The firm proposes a qualified team with several licensed professional engineers and experienced technical staff.

The firm's Broward County office provides proximity to the City of Pompano Beach, allowing efficient coordination and responsiveness for task orders. HBC also indicates adequate staffing resources and structured workload management practices to support the City's continuing services contract.

While the firm shows solid municipal engineering experience, several example projects appear to be smaller structural inspections, recertification work, or support roles rather than large-scale structural design programs. As a result, the firm may rank as a low to mid-tier proposer compared to larger multidisciplinary firms with broader structural infrastructure portfolios.


Signature of Evaluator

3/9/2026

Date

Hector R. Gandia

Printed Name

RLI26-006 - CONTINUING CONTRACT FOR PROFESSIONAL STRUCTURAL ENGINEERING SERVICES - CCNA

Proposer Kimley-Horn

SECTION NUMBER AND DESCRIPTION		POINTS	SCORE
1	Prior experience of the firm with projects of similar size and complexity:	0-15	15
2	Qualifications of personnel, including subconsultants:	0-15	15
3	Proximity of the nearest office to the project location:	0-15	15
4	Current and Projected Workload	0-15	14
5	Demonstrated Prior Ability to Complete Project on Time	0-15	14
6	Demonstrated Prior Ability to Complete Project on Budget	0-15	13
7	Local Vendors Program	0-5	Completed by Procurement
TOTAL		95	

COMMENTS:

Kimley-Horn and Associates, Inc. demonstrates extensive experience providing structural engineering services for municipal and transportation infrastructure projects throughout Florida. Their project portfolio includes bridge replacement, bridge rehabilitation, boardwalk and waterfront structures, parking structures, and municipal facility improvements. The firm is currently performing structural design services within the City of Pompano Beach for bridge improvements under the City's G.O. Bond program.

The proposed project team includes highly qualified structural engineers with significant experience in bridge design, inspections, permitting, and construction support services. The firm also maintains multiple offices within South Florida, allowing for efficient coordination and responsiveness to City task orders.

Kimley-Horn's large staff resources and structured workload management approach provide strong capacity to support multiple assignments under this continuing services contract. Based on the qualifications presented and their experience, this firm is very qualified for this contract.


Signature of Evaluator

3/9/2026

Date

Hector R. Gandia

Printed Name

RLI26-006 - CONTINUING CONTRACT FOR PROFESSIONAL STRUCTURAL ENGINEERING SERVICES - CCNA

Proposer RJ Behar

SECTION NUMBER AND DESCRIPTION		POINTS	SCORE
1	Prior experience of the firm with projects of similar size and complexity:	0-15	14
2	Qualifications of personnel, including subconsultants:	0-15	12
3	Proximity of the nearest office to the project location:	0-15	13
4	Current and Projected Workload	0-15	12
5	Demonstrated Prior Ability to Complete Project on Time	0-15	13
6	Demonstrated Prior Ability to Complete Project on Budget	0-15	13
7	Local Vendors Program	0-5	Completed by Procurement
TOTAL		95	

COMMENTS:

R.J. Behar & Company, Inc. demonstrates relevant experience providing structural engineering services for municipal infrastructure projects throughout South Florida. The firm's portfolio includes bridge rehabilitation and design, seawall repairs, pump stations, water control structures, and structural inspections for public agencies such as FDOT, SFWMD, and multiple municipalities. The firm also has direct project experience with the City of Pompano Beach, including seawall repairs and neighborhood infrastructure improvements.

The proposed team includes experienced engineers with significant expertise in bridge design and structural rehabilitation. The firm also provides supporting services through subconsultants for surveying, geotechnical engineering, and structural inspection services.

While RJ Behar demonstrates solid municipal experience and familiarity with local permitting agencies, several project examples are smaller infrastructure or inspection assignments rather than large-scale structural design programs. They are very capable of handling mid to upper scale projects.


Signature of Evaluator

3/9/2026

Date

Hector R. Gandia

Printed Name

RLI26-006 - CONTINUING CONTRACT FOR PROFESSIONAL STRUCTURAL ENGINEERING SERVICES - CCNA

Proposer Tectonic Group International

SECTION NUMBER AND DESCRIPTION		POINTS	SCORE
1	Prior experience of the firm with projects of similar size and complexity:	0-15	11
2	Qualifications of personnel, including subconsultants:	0-15	12
3	Proximity of the nearest office to the project location:	0-15	15
4	Current and Projected Workload	0-15	12
5	Demonstrated Prior Ability to Complete Project on Time	0-15	12
6	Demonstrated Prior Ability to Complete Project on Budget	0-15	12
7	Local Vendors Program	0-5	Completed by Procurement
TOTAL		95	

COMMENTS:

Tectonic Group International (TGI) demonstrates experience providing engineering and inspection services for municipal infrastructure projects including bridges, seawalls, structural assessments, and building recertification programs. The firm proposes a multidisciplinary team of engineers, inspectors, and support staff with significant experience in construction administration, inspection services, and infrastructure coordination.

The firm maintains a project office within the City of Pompano Beach, which provides strong proximity and responsiveness for task assignments under this continuing services contract. The proposal highlights experience with project coordination, construction oversight, and schedule tracking to support municipal infrastructure projects.

While the firm demonstrates strong experience in construction inspection and infrastructure support services, the proposal provides fewer examples of large-scale structural design projects compared to some larger structural engineering firms responding to the solicitation. Based on the qualifications presented, the firm ranks as a mid-tier proposer for this solicitation, and is capable of handling small to mid size projects.


Signature of Evaluator

3/9/2026

Date

Hector R. Gandia

Printed Name



EVALUATION CRITERIA
Procurement & Contracts Department

RLI26-006 - CONTINUING CONTRACT FOR PROFESSIONAL STRUCTURAL ENGINEERING SERVICES - CCNA

Proposer Conemco

SECTION NUMBER AND DESCRIPTION		POINTS	SCORE
1	Prior experience of the firm with projects of similar size and complexity:	0-15	10
2	Qualifications of personnel, including subconsultants:	0-15	5
3	Proximity of the nearest office to the project location:	0-15	5
4	Current and Projected Workload	0-15	
5	Demonstrated Prior Ability to Complete Project on Time	0-15	
6	Demonstrated Prior Ability to Complete Project on Budget	0-15	
7	Local Vendors Program	0-5	Completed by Procurement
TOTAL		95	

COMMENTS:

George Buenaventura
Signature of Evaluator

3/11/2026
Date

George Buenaventura
Printed Name

Qualifications Of Bidders

To demonstrate qualifications to perform the work, and to be considered for award, each bidder shall submit at least three (3) business customer references. Provide information for business customers for whom you have performed work of this nature which you list as references, excluding the City of Pompano Beach. (Use an attachment if necessary.)

1. Name and address of customer: Palm Beach County School District
3300 Forest Hill Boulevard , West Palm Beach, FL 33406

Contact person name, telephone number and email address: James J. Kunard, PE, LEED
561-882-914 X 21914 - jim.kunard@palmbeachschools.org

Description of services provided and date(s) of service: Conemco provided structural assessment and design services
for stair-nosing repairs, incorporating field observations, record drawings, and District Master Specifications.

Developed complete permit-ready construction documents, including plans and specifications, to support issuance of a Building Permit. (2021-2021)

2. Name and address of customer: The Casablanca Condominium Association, Inc
6345 Collins Avenue, Miami Beach, FL 33141

Contact person name, telephone number and email address: Jose Luis Lopez
305-528-7473 - joseluis@lcroyalmanagement.com

Description of services provided and date(s) of service: Conemco Engineering Inc, conducted a Visual Damages Survey
to document existing issues and assess the building's current condition. Also performed a Structural Integrity Reserve Study evaluating major components, estimating

remaining service life, and identifying long-term funding needs. A reserve funding plan was developed to ensure the association can prepare for future repairs and replacements. (2023-2025)

3. Name and address of customer: Oceania Condominium III
16485 Collins Ave, Sunny Isles Beach, FL 33160

Contact person name, telephone number and email address: Diana Ross
305-919-8668 - Office@oceaniatower3.com

Description of services provided and date(s) of service: Conemco Consultants completed a Structural Integrity Reserve Study
assessing component conditions, remaining life, and replacement costs. Also prepared structural and electrical shop drawings for the lobby ceiling and walls.

Additionally, the team performed a visual electrical inspection for the building, provided a detailed report, and submitted updated recertification reports after repairs. (2023-Ongoing)

Qualifications Of Bidders

To demonstrate qualifications to perform the work, and to be considered for award, each bidder shall submit at least three (3) business customer references. Provide information for business customers for whom you have performed work of this nature which you list as references, excluding the City of Pompano Beach. (Use an attachment if necessary.)

1. Name and address of customer: Miami-Dade County Department of Solid Waste Management
2525 NW 62nd Street, 5th Floor Miami, FL 33147

Contact person name, telephone number and email address: Ravi Kadambala
305-514-6672 - Ravi.Kadambala@miamidade.gov

Description of services provided and date(s) of service: Conemco provided a set of Structural and Electrical
engineering drawings, calculations, specifications, and bid documents required to repair and conducted a 40-Year Recertification
of West Transfer Station Building, in accordance with Section 8-11(f) of the Miami-Dade County Code. April 2022-Ongoing

2. Name and address of customer: Miami-Dade Aviation Department (MDAD)
4200 NW 36th, Miami, FL, 33166

Contact person name, telephone number and email address: Abel Oporto
305-869-3876 - aoporto@miami-airport.com

Description of services provided and date(s) of service: Conemco assessed the structural integrity of the Skytrain
concrete guideway at the North Terminal and prepared a Basis of Design Report and repair plans for sealing approximately 200 LF of platform cracks.
The work included designing drainage upgrades and a waterproofing plan to prevent water from entering the Customs Area below. March 2018-November 2021

3. Name and address of customer: Maison Grande Condominium Association
6039 Collins Avenue, Miami Beach, FL 33140

Contact person name, telephone number and email address: Arnold Villar
786-402-6178 - arnold.villar@colliers.com

Description of services provided and date(s) of service: Conemco is Engineer of Record responsible for the building's structural restoration.
Thei work includes façade, parking garage, sealant, window/door evaluations, and mitigation planning for flooding and expansion-joint deterioration.
We also assessed and designed repairs for the pool and recreation decks, structural elements in common areas, and balcony railings to ensure code compliance. February 2024-Ongoing

Qualifications Of Bidders

To demonstrate qualifications to perform the work, and to be considered for award, each bidder shall submit at least three (3) business customer references. Provide information for business customers for whom you have performed work of this nature which you list as references, excluding the City of Pompano Beach. (Use an attachment if necessary.)

1. Name and address of customer: Coastal Systems International, Inc.
464 South Dixie Highway Coral Gables, FL 33146

Contact person name, telephone number and email address: Julio A. Olano, MCP
305-669-5677- jaolano@coastalsystemsint.com

Description of services provided and date(s) of service: Conemco performed a topographic and ROW survey
to support engineering and architectural design. The work documented existing utilities, roadways, drainage,
and established baselines, centerlines, and benchmarks to ensure accurate design and construction layout. (2023-2023)

2. Name and address of customer: HAMILTON ON THE BAY
555 NE 34th street, Miami, FL 33137

Contact person name, telephone number and email address: Ahmad Raza
720-768-9169 - ahmad.raza@aimco.com

Description of services provided and date(s) of service: Conemco provided structural drawings and calculations
wood deck and east side walkway, including framing, connections, bridges, stairs, and EPAY panels. Also completed a topographic survey
of existing conditions to establish accurate elevations and control points supporting the proposed structures. (2021-2022)

3. Name and address of customer: Gilbane Building Company
13001 Southern Blvd., Loxahatchee, FL 33470

Contact person name, telephone number and email address: Christopher Silvers
407-541-5911 - CSilvers@GilbaneCo.com

Description of services provided and date(s) of service: Conemco performed a partial special-purpose topographic survey
with cross-section spot elevations at key roadway, sidewalk, curb, swale, and property boundary locations. Deliverables included detailed CAD drawings
of right-of-way features, utilities, drainage structures, landscaping, and traffic elements, with all elevations referenced to the NAVD 88 datum. (2022-2022)

Qualifications Of Bidders

To demonstrate qualifications to perform the work, and to be considered for award, each bidder shall submit at least three (3) business customer references. Provide information for business customers for whom you have performed work of this nature which you list as references, excluding the City of Pompano Beach. (Use an attachment if necessary.)

1. Name and address of customer: Town of Davie
3300 NW 77th Avenue, Davie, FL 33024

Contact person name, telephone number and email address: Keith Pursell
754-581-0169 - kpursell@davie-fl.gov

Description of services provided and date(s) of service: Conemco provided survey services that included site topographic and existing elevation measurements, preparation of the site legal description document, construction layout, including existing utilities survey and locations, and site final as-built drawings. (2022-2023)

2. Name and address of customer: Jorge A. Gutierrez Architect LLC
14400 NW 77 CT, Suite #104, Miami Lakes, FL 33016

Contact person name, telephone number and email address: Jorge Gutierrez
786-657-2352 - Jor-G@jagaia.com

Description of services provided and date(s) of service: Conemco completed a special-purpose topographic survey at the school site within defined limits. The work documented elevations, paving, buildings, landscaping, irrigation, and aboveground utilities, including drainage features, meters, manholes, traffic signs, and site fixtures.

3. Name and address of customer: St. Thomas University
16401 NW 37th Ave, Miami Gardens, FL 33054

Contact person name, telephone number and email address: Christopher Tarrant
786.778.7952 - ctarrant@stu.edu

Description of services provided and date(s) of service: Conemco Consultants performed a topographic survey of the football field and surrounding areas to locate the proposed LED scoreboard support and foundations. The survey documented elevations, utilities, paving, site features, and nearby structures, supporting the design of a reinforced concrete foundation capable of withstanding required structural and hurricane wind loads. (2021-2022)



EVALUATION CRITERIA

Procurement & Contracts Department

RLI26-006 - CONTINUING CONTRACT FOR PROFESSIONAL STRUCTURAL ENGINEERING SERVICES - CCNA

Proposer FAC CONSULTING

SECTION NUMBER AND DESCRIPTION		POINTS	SCORE
1	Prior experience of the firm with projects of similar size and complexity:	0-15	15
2	Qualifications of personnel, including subconsultants:	0-15	7
3	Proximity of the nearest office to the project location:	0-15	5
4	Current and Projected Workload	0-15	
5	Demonstrated Prior Ability to Complete Project on Time	0-15	
6	Demonstrated Prior Ability to Complete Project on Budget	0-15	
7	Local Vendors Program	0-5	Completed by Procurement
TOTAL		95	

COMMENTS:

* 5 SUB-CONSULTANTS ON PROJECT

* 9 - P.E INCLUDING SUBS.


Signature of Evaluator

3/11/2026
Date

GEORGE BENAVENTURA
Printed Name

Qualifications Of Bidders

To demonstrate qualifications to perform the work, and to be considered for award, each bidder shall submit at least three (3) business customer references. Provide information for business customers for whom you have performed work of this nature which you list as references, excluding the City of Pompano Beach. (Use an attachment if necessary.)

1. Name and address of customer: Port Miami
1080 Caribbean Way, Suite 500, Miami, FL
Contact person name, telephone number and email address: Victor Gutierrez, PE, PMP
305-347-4802, Victor.Gutierrez@miamidade.gov
Description of services provided and date(s) of service: Seawall Design, Misc. Structural Engineering, Bridge Design, Building Engineering, Construction Administration, Construction Engineering and Inspections Design: 05/2019-05/2021 Construction: 10/2021-09/2023

2. Name and address of customer: FDOT District 6
1000 NW 111th Ave, Miami, FL 33172
Contact person name, telephone number and email address: Hailing Zhang, PhD, PE
(305) 470-5484, hailing.zhang@dot.state.fl.us
Description of services provided and date(s) of service: Seawall Design, Misc. Structural Engineering, Bridge Design, Building Engineering, Construction Administration, Construction Engineering and Inspections Design: 03/2018-03/2023 Construction: 03/2024-ongoing

3. Name and address of customer: FDOT District 6
1000 NW 111th Ave, Miami, FL 33172
Contact person name, telephone number and email address: Paola Martinez, PE
305-470-5210, paola.martinez@dot.state.fl.us
Description of services provided and date(s) of service: Seawall Design, Misc. Structural, Engineering, Bridge Design, Building Engineering, Construction Administration, Construction Engineering and Inspections Design: 01/2025-ongoing Construction: TBD



EVALUATION CRITERIA
Procurement & Contracts Department

RLI26-006 - CONTINUING CONTRACT FOR PROFESSIONAL STRUCTURAL ENGINEERING SERVICES - CCNA

Proposer HBC ENGINEERING

SECTION NUMBER AND DESCRIPTION		POINTS	SCORE
1	Prior experience of the firm with projects of similar size and complexity:	0-15	5
2	Qualifications of personnel, including subconsultants:	0-15	10
3	Proximity of the nearest office to the project location:	0-15	5
4	Current and Projected Workload	0-15	
5	Demonstrated Prior Ability to Complete Project on Time	0-15	
6	Demonstrated Prior Ability to Complete Project on Budget	0-15	
7	Local Vendors Program	0-5	Completed by Procurement
TOTAL		95	

COMMENTS:

Signature of Evaluator

3/11/2026
Date

GEORGE BUENAVENTURA
Printed Name

Qualifications Of Bidders

To demonstrate qualifications to perform the work, and to be considered for award, each bidder shall submit at least three (3) business customer references. Provide information for business customers for whom you have performed work of this nature which you list as references, excluding the City of Pompano Beach. (Use an attachment if necessary.)

1. Name and address of customer: _____

Kimley-Horn and Associates, Inc. ,1920 Wekiva Way, Suite 200 West Palm Beach, FL 33411

Contact person name, telephone number and email address: _____

Mr. Lance Littrell P.E, lance.littrell@kimley-horn.com, 407-412-7544

Description of services provided and date(s) of service: HBC supported the Palm Beach County Water Utilities Department on the expansion of Water Treatment Plant No. 2 provided hydraulic modeling, electrical engineering, permitting support, and site specific field investigations, working closely with the prime consultant and County stakeholders to deliver resilient, high quality solutions. (1/2024-Ongoing)

2. Name and address of customer: _____

Miami Dade County Dept of Solid Waste Management , 2525 NW 62st , Miami FL 33147

Contact person name, telephone number and email address: _____

Marcella Villegas, 786- 747 1692 , Marcela.Villegas@miamidade.gov

Description of services provided and date(s) of service: 60 year recertification of Building No. 4 include comprehensive structural and electrical inspections, preparation of signed and sealed reports, and required certifications in compliance with Miami-Dade County RER requirements, with oversight from initial assessment through final approval to ensure public safety, regulatory compliance, and extended facility service life. (Ongoing)

3. Name and address of customer: _____

Seminole Tribe of Florida, 5700 Griffin Road Davie, FL 33314

Contact person name, telephone number and email address: _____

Jose Omar Nunez .P.E, 9548941060, josenunez@semtribe.com

Description of services provided and date(s) of service: providing structural and civil engineering for a new pedestrian bridge across SR 7 within the Hollywood Seminole Indian Reservation. The work includes bridge concept development, field investigations, preparation of construction documents, roadway and stormwater design, permitting, and coordination with STOF, FDOT, and FHWA, with optional visualization and bid phase support. (Ongoing)

Qualifications Of Bidders

To demonstrate qualifications to perform the work, and to be considered for award, each bidder shall submit at least three (3) business customer references. Provide information for business customers for whom you have performed work of this nature which you list as references, excluding the City of Pompano Beach. (Use an attachment if necessary.)

1. Name and address of customer: _____

Florida Department of Transportation District 4; 3400 W Commercial Blvd, Fort Lauderdale, FL

Contact person name, telephone number and email address: _____

Lance Jones, PE, 954-777-4680, lance.jones1@dot.state.fl.us

Description of services provided and date(s) of service: providing professional engineering services for the redesign of the bus stop bay at the northeast corner of Nova Drive and SR 817 University Drive. he project focuses on improving passenger access, safety, and operational efficiency while maintaining traffic flow. (02/2022-Ongoing)

2. Name and address of customer: _____

City of Fort Lauderdale; 100 N Andrews Ave, Fort Lauderdale, FL 33301

Contact person name, telephone number and email address: _____

Ana Ziegler, EE/PM II; 954-828-5817, aziegler@fortlauderdale.gov

Description of services provided and date(s) of service: providing design services for replacement of the Riverwalk North seawall from the Andrews Avenue Bridge approximately five hundred feet west toward the FXE rail corridor. Services include design of a new sheet pile seawall, demolition of the existing catwalk, installation of fixed and floating docks, utility and electrical relocations, structural inspections and repairs (Ongoing)

3. Name and address of customer: _____

Florida Turnpike Enterprise (FTE); Milepost 263, Bldg. 5315 Ocoee, FL. 34761

Contact person name, telephone number and email address: _____

Bing Wang, PE; 954- 777-4419

Description of services provided and date(s) of service: supporting Florida's Turnpike Enterprise with design and contract document preparation for the Southern Turnpike CCTV Upgrades project, including ITS design and supporting engineering services for installation of 31 new CCTV cameras along SR 91 and SR 821 integrated with FDOT's SunGuide system. (Ongoing)

REFERENCES

HBC Engineering Company would be honored to have the opportunity to support the City of Pompano Beach on future projects. We are excited to apply our multidisciplinary expertise, local knowledge, and commitment to responsive service to advance the City's infrastructure goals. We look forward to collaborating closely with City staff to deliver high quality, reliable, and timely engineering solutions.

Water Treatment Plant No. 2 Expansion



Location

West Palm Beach, FL

Contact Person

Lance Littrell PE, (407) 552-4369, lance.littrell@kimley-horn.com

Project Completion

Ongoing | **On track to being completed On Time & On Budget**

Total Cost of Construction: Estimated & Actual

Estimated Construction Cost: \$134K

Actual Construction Cost: N/A

HBC supported Palm Beach County Water Utilities Department on the expansion of Water Treatment Plant No. 2 to increase capacity, address emerging contaminants, and improve system reliability. Services included hydraulic modeling, electrical engineering for process upgrades, permitting support, and field investigations. Working closely with the prime consultant and County stakeholders, HBC delivered responsive, technically sound solutions supporting long-term system resilience.

60-Year Recertification of 58th Street Building No. 4



Location

Miami, FL

Contact Person

Marcela Villegas, (786) 747-1692, Marcela.Villegas@miamidade.gov

Project Completion

Ongoing | **On track to being completed On Time & On Budget**

Total Cost of Construction: Estimated & Actual

Estimated Construction Cost: \$30K

Actual Construction Cost: N/A

HBC is providing professional engineering services for Miami-Dade County Solid Waste Management's 60-Year Recertification of Building No. 4 at 8795 NW 58th Street. Services include structural and electrical inspections, signed and sealed reports, and required certifications in compliance with RER requirements. The scope includes assessments, documentation, deficiency identification, repair recommendations, and re-inspections to achieve final approval and ensure public safety.

Hollywood Seminole Indian Reservation Pedestrian Bridge



Location

Hollywood, FL

Contact Person

Jose Omar Nunez, (954) 894-1060, josenunez@semtribe.com

Project Completion

Ongoing | **On track to being completed On Time & On Budget**

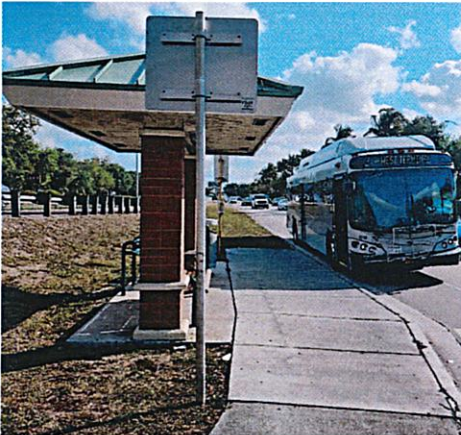
Total Cost of Construction: Estimated & Actual

Estimated Construction Cost: \$3.5M

Actual Construction Cost: N/A

HBC Engineering Company is providing comprehensive structural and civil engineering services for a new pedestrian bridge connecting key areas within the Hollywood Seminole Indian Reservation across SR 7, enhancing pedestrian safety and mobility. The scope includes structural analysis and schematic development of three bridge concepts, along with field investigations such as topographic and boundary surveys, utility locates, and geotechnical investigations. HBC is preparing 30 percent, 90 percent, and 100 percent construction documents and developing a complete roadway set of plans incorporating typical sections, cross sections, and signing and pavement marking plans. The team is coordinating with STOFI, FDOT, FHWA, and other regulatory agencies, preparing technical specifications, permit applications, and stormwater design. Additional services include bid phase support, optional 3D renderings, drone flyovers, and virtual presentations, ensuring compliance with all tribal, state, and federal requirements.

SR-817/University Dr from Nova Dr to SR-84 Bus Stop Bay



Location

Davie, FL

Contact Person

Lance Jones, PE, (954) 777-4680

Project Completion

Ongoing | **On track to being completed On Time & On Budget**

Total Cost of Construction: Estimated & Actual

Estimated Construction Cost: \$1.8M

Actual Construction Cost: N/A

HBC is providing professional engineering services to redesign the bus stop bay at the northeast corner of Nova Drive and SR 817 University Drive. The project focuses on enhancing passenger access, safety, and operational efficiency while preserving traffic flow along this high volume corridor. Services include evaluating existing geometric conditions, coordinating with transit and roadway stakeholders, and developing targeted improvements to the bus stop bay. The redesign supports safer boarding and alighting, improved bus maneuverability, and reduced conflicts with adjacent traffic. Design considerations address accessibility, pedestrian connectivity, and compatibility with existing roadway features to improve transit reliability and minimize traffic impacts.

Riverwalk North Seawall Replacement Project



Location

Fort Lauderdale, FL

Contact Person

Ana Ziegler, EE/PM II, (954) 828-5817, aziegler@fortlauderdale.gov

Project Completion

Ongoing | **On track to being completed On Time & On Budget**

Total Cost of Construction: Estimated & Actual

Estimated Construction Cost: \$1.2M

Actual Construction Cost: N/A

HBC is providing professional engineering services for the replacement of the Riverwalk North seawall, extending from the Andrews Avenue Bridge approximately five hundred feet west toward the FXE rail corridor. The project includes the design of a new sheet pile seawall installed in front of the existing concrete seawall along the river frontage, as well as demolition of the existing concrete catwalk. HBC's scope encompasses the design and installation of fixed docks, floating docks, and associated waterfront amenities, relocation and replacement of utilities and utility stations, and replacement of electrical shore tie pedestals. Services also include inspection of deteriorated structural elements, data collection and evaluation of existing conditions, and development of repair designs and specifications. Post design services include participation in pre construction meetings and review of shop drawings, product data, and submittals to verify compliance with project requirements.

CCTV Southern Turnpike Upgrades



Location

Miami, FL

Contact Person

Bing Wang, PE, (954) 777-4419

Project Completion

Ongoing | **On track to being completed On Time & On Budget**

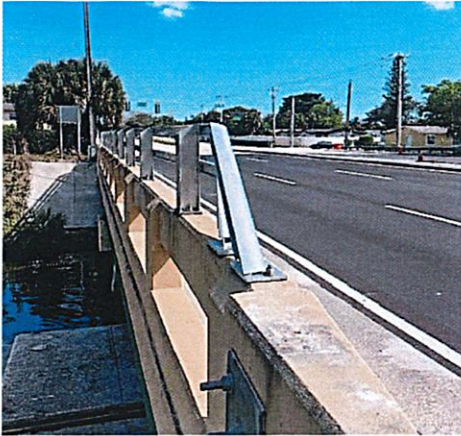
Total Cost of Construction: Estimated & Actual

Estimated Construction Cost: \$1.3M

Actual Construction Cost: N/A

HBC Engineering Company is supporting Florida's Turnpike Enterprise with the design and preparation of contract documents for the Southern Turnpike CCTV Upgrades project. This systemwide initiative improves operational visibility by installing 31 new CCTV cameras along SR 91 and SR 821, including major service plazas such as Snapper Creek, Pompano, West Palm Beach, Fort Pierce, and Fort Drum. The enhanced ITS infrastructure will support real time monitoring, improved incident response, and future data collection. As design consultant, HBC is preparing construction ready plans and specifications in accordance with FDOT systems engineering and Rule 940 ITS requirements. Services include ITS design, roadway analysis, surveying, geotechnical investigations, SUE, drainage analysis, utility coordination, environmental documentation, and QA QC. The system will integrate with FDOT's SunGuide software and operate from the Pompano Beach and Turkey Lake TMCs.

Atlantice Boulevard Over East Outfall



Location

Coral Springs, FL

Contact Person

Anh Ton, (954) 357-6059

Project Completion

Ongoing | **On track to being completed On Time & On Budget**

Total Cost of Construction: Estimated & Actual

Estimated Construction Cost: \$2.6M

Actual Construction Cost: \$2.6M

The project involved major rehabilitation of Broward County-owned twin bridges on Atlantic Boulevard over the East Outfall Canal in the City of Coral Springs, between Ramblewood Drive and Rock Island Road. These bridges serve a critical regional transportation corridor and required significant repairs based on deficiencies identified in the most recent FDOT bridge inspection report. **The scope included comprehensive substructure and superstructure rehabilitation, replacement of deteriorated structural components, and reinforcement of critical load-bearing elements.** Additional improvements consisted of concrete restoration, application of protective coatings to mitigate corrosion, and installation of new expansion joints to accommodate structural movement. Bridge deck resurfacing and waterproofing were also completed to extend service life, enhance safety, and improve ride quality, all in compliance with FDOT standards.

Airfield Development Program, Fort Lauderdale International Airport



Location

Hollywood, FL

Contact Person

Philip Partenheimer, (865) 483-9005

Project Completion

2007-2008 | **Completed On Time & On Budget**

Total Cost of Construction: Estimated & Actual

Estimated Construction Cost: \$10.6M

Actual Construction Cost: \$10.5M

HBC Engineering Company provided comprehensive design and construction support services for the Airfield Development Program at Fort Lauderdale Hollywood International Airport. The work focused on preparing airside drainage construction documents in compliance with applicable regulatory and project requirements. Design services included plans for large rectangular drainage structures and 66 inch concrete pipes connecting Ponds AM and E following the elimination of Taxiway E 3. HBC revised the Pond T grading plan to accommodate removal of the VASI system and installation of new PAPI and Runway Distance Remaining devices. Additional drainage areas were transferred to the Runway Overlay Project. HBC prepared the Environmental Resource Permit and provided construction phase services including shop drawing reviews, RFI responses, ERP modifications, schedule reporting, as built plan reviews, and regulatory compliance oversight.



EVALUATION CRITERIA
Procurement & Contracts Department

RLI26-006 - CONTINUING CONTRACT FOR PROFESSIONAL STRUCTURAL ENGINEERING SERVICES - CCNA

Proposer Kintley-Horn

SECTION NUMBER AND DESCRIPTION		POINTS	SCORE
1	Prior experience of the firm with projects of similar size and complexity:	0-15	15
2	Qualifications of personnel, including subconsultants:	0-15	10
3	Proximity of the nearest office to the project location:	0-15	5
4	Current and Projected Workload	0-15	
5	Demonstrated Prior Ability to Complete Project on Time	0-15	
6	Demonstrated Prior Ability to Complete Project on Budget	0-15	
7	Local Vendors Program	0-5	Completed by Procurement
TOTAL		95	

COMMENTS:

Signature of Evaluator

3/11/2026
Date

GEORGE BUENAVENTURA
Printed Name

Qualifications Of Bidders

To demonstrate qualifications to perform the work, and to be considered for award, each bidder shall submit at least three (3) business customer references. Provide information for business customers for whom you have performed work of this nature which you list as references, excluding the City of Pompano Beach. (Use an attachment if necessary.)

1. Name and address of customer: City of Lighthouse Point
2200 NE 38th Street, Lighthouse Point, FL 33064
Contact person name, telephone number and email address: James Finley, Operations Manager
P: 954-868-4153 | E: jfinley@lighthousepoint.com
Description of services provided and date(s) of service: Under an on-call contract,
Kimley-Horn was retained to provide professional services to inspect and
develop condition assessment reports for seven City owned bridges. 11/2022-2/2025

2. Name and address of customer: Palm Beach County
301 N. Olive Avenue, West Palm Beach, FL 33401
Contact person name, telephone number and email address: Carlos Bojorge, PE
Special Projects Section Manager | P: 561-684-4150 | E: CBojorge@pbc.gov
Description of services provided and date(s) of service: Kimley-Horn was contracted to assess
and develop rehabilitation plans for the Torry Island Swing bridge. To help facilitate the repairs,
a lead-based paint survey and existing steel metallurgical testing were conducted.

3. Name and address of customer: Palm Beach County
301 N. Olive Avenue, West Palm Beach, FL 33401
Contact person name, telephone number and email address: Morton Rose
Roadway Production Division Assistant Director | P: 561-684-4150 | E: MRose@pbcgov.org
Description of services provided and date(s) of service: The bridge will be a six-lane structure,
featuring curbs, gutters, bike lanes, and sidewalks to accommodate various modes of transportation.
The design includes a four-span bridge structure, with considerations for the Turnpike's widening and canal relocation.

List of Projects Performed for the City of Pompano Beach

- » Airpark Traffic and Environmental Planning Services
- » City of Pompano Beach Dixie Highway Streetscape Program Reconnecting Communities Pilot Program Grant Preparation
- » City of Pompano Beach NE 33rd Streetscape Improvements
- » City of Pompano Beach SE 11th Avenue Bridge Conceptual Plans and Typical Cross Sections
- » City of Pompano Beach, Atlantic Boulevard Bascule Bridge Improvements including Decorative Sails and Lighting
- » Citywide Transportation Master Plan - Phase 1
- » Dixie and Copan Signal Improvements
- » Dixie Highway and Atlantic Boulevard Improvements
- » ETOC Undergrounding Study
- » McNab Road Over Cypress Creek (C-14) Bridge Replacement and Terra Mar Drive over Spanish River Bridge Rehabilitation Projects
- » McNab SA
- » Misc Traffic Engineering Services
- » PMP - Air Traffic Control Study - Phase 2
- » PMP - Security Improvements (Design)
- » Pompano Beach Airpark Continuing Services (including Runway 15/33 Rehabilitation)
- » Pompano Beach Continuing Contract for Transportation Engineering Services for Various City Projects
- » Pompano Beach Continuing Contracts for Airpark Engineering Services
- » Pompano Beach East Transit Oriented Corridor (ETOC) Transportation Analysis
- » Pompano Beach Fire Station #52 Building Fortification CDBG-MIT Grant Preparation
- » Pompano Beach McNab Road Improvements
- » Pompano Beach McNab Road Streetscape and Bright Improvements CDBG-MIT Grant Preparation
- » Pompano Beach RCP Grant - Dixie Hwy
- » SE 6th Bridge bidding
- » SE 6th Terrace Bridge Replacement (2023)
- » SR A1A Streetscapes Improvements Signalization
- » Storm Secure Communications Study
- » Terra Mar Assessment
- » TerraMar Bridge Repair Plans
- » Transportation Master Plan
- » WA #10 PMP New Airport Entrance CPS





EVALUATION CRITERIA

Procurement & Contracts Department

RLI26-006 - CONTINUING CONTRACT FOR PROFESSIONAL STRUCTURAL ENGINEERING SERVICES - CCNA

Proposer R J REHAR & CO.

SECTION NUMBER AND DESCRIPTION		POINTS	SCORE
1	Prior experience of the firm with projects of similar size and complexity:	0-15	12
2	Qualifications of personnel, including subconsultants:	0-15	10
3	Proximity of the nearest office to the project location:	0-15	5
4	Current and Projected Workload	0-15	
5	Demonstrated Prior Ability to Complete Project on Time	0-15	
6	Demonstrated Prior Ability to Complete Project on Budget	0-15	
7	Local Vendors Program	0-5	Completed by Procurement
TOTAL		95	

COMMENTS:

Signature of Evaluator

3/11/2026
Date

GEORGE BUENAVENTURA
Printed Name

Qualifications Of Bidders

To demonstrate qualifications to perform the work, and to be considered for award, each bidder shall submit at least three (3) business customer references. Provide information for business customers for whom you have performed work of this nature which you list as references, excluding the City of Pompano Beach. (Use an attachment if necessary.)

1. Name and address of customer: Palm Beach County - Department of Engineering & Public Works
Division of Roadway Production - 2300 North Jog Road West Palm Beach, Florida 33411

Contact person name, telephone number and email address: Mr. Carlos Bojorge, PE - Project
Manager - Roadway Production Division; Tel: 561 684-4126; E-mail: cbojorge@pbc.gov

Description of services provided and date(s) of service: Annual Structural Contract - On An As-Needed Basis

Structural engineering design of new facilities and repair of existing ones; structural
inspections and/or evaluations of existing structures and evaluations of conditions on
structural engineering construction projects designed by others. Dates: 12/2004 - Ongoing.

2. Name and address of customer: City of Miami Beach - Facilities Management Division
1833 Bay Road Miami Beach, Florida 33139

Contact person name, telephone number and email address: Ms. Olga Sanchez, EI, CGC, LEED AP
Senior Facilities Capital Projects Coordinator; Tel: (305) 673-7000 Ext. 22567; E-mail: OlgaSanchez@miamibeachfl.gov

Description of services provided and date(s) of service: 40-Yr Certification of 225 Washington Avenue

40-Yr certification including inspection of the life/safety components of the building
(structural/electrical) and providing the inspection report. Dates: 4/25/23 to 9/2024

3. Name and address of customer: South Broward Drainage District
6591 SW 160 Avenue Southwest Ranches, FL 33331

Contact person name, telephone number and email address: Mr. Luis Ochoa, PE – District Director
Tel: (954) 680-3337, ext. 203; E-mail: luis@sbdd.org

Description of services provided and date(s) of service: Pump Station Housing Inspection

Structural inspections of the control building Pump Station S-4/S-5. The purpose of the inspection was to assess
the condition and integrity of the concrete structure on the property. The structural inspections of the building included
the foundation, roof, beams, roof slab, walls, surface coatings. Dates: 02/14/2024 to 03/28/2024



ANNUAL STRUCTURAL CONTRACT PALM BEACH COUNTY, FLORIDA

CLIENT:

*Palm Beach County
Department of Engineering &
Public Works Division of
Roadway Production
2300 North Jog Road
West Palm Beach, Florida 33411*

*Mr. Carlos Bojorge, PE
Project Manager, Roadway
Production Division
Tel: (561) 684-4126
Email: cbojorge@pbc.gov*

RJ BEHAR'S ROLE:

Structural Design & Permit Reviews

PROJECT START: 12/07/2004
PROJECT COMPLETE: Ongoing
COST/FEES PAID: \$6,150,000
as of 3/15/2025
CONSTRUCTION COST:
\$60,000,000 (Estimate)

RJ BEHAR'S KEY PERSONNEL:

*Robert J. Behar, PE
Principal in Charge*

*Jerry Piccolo PE
Senior Structural Engineer*

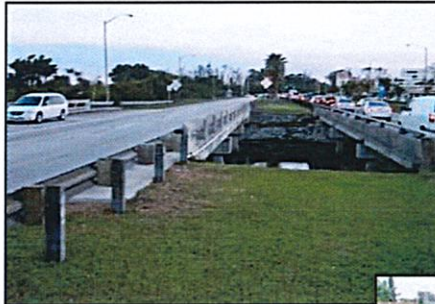
*Gregory Dover, PE
Senior Structural Engineer*

*Jossmel Cruz Garcia, PE
Structural Designer*

*Gerrad Nazaire, PE
Structural Engineer*

*Esteban Aldana, EI
Structural Designer*

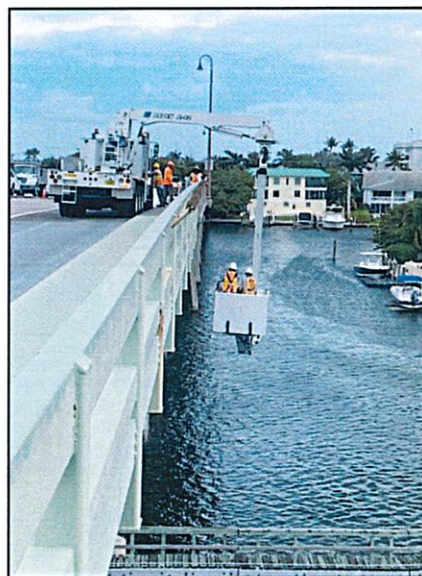
R.J. Behar & Company, Inc. (RJ Behar) was contracted by Palm Beach County to provide structural engineering services on an as-needed basis. These services include structural engineering design of new facilities and repairs of existing facilities, structural inspections and/or evaluations of existing structures and evaluations of conditions on structural engineering construction projects designed by others. The exact scope and schedule are to be established on a project-by-project basis."



**Congress Avenue Bridge
over L-14 Canal**



**Lawrence Road Bridge
over Boynton Canal**



**Linton Boulevard Bascule
Bridge**





40 YEAR CERTIFICATION OF 225 WASHINGTON AVE.
MIAMI BEACH, FLORIDA

CLIENT:

City of Miami Beach
Facilities Management Division
1833 Bay Road
Miami Beach, Florida 33139

Ms. Olga Sanchez, E.I., C.G.C.,
LEED AP
Senior Facilities Capital Projects
Coordinator

Tel: (305) 673-7000 Ext. 22567
E-mail:
OlgaSanchez@miamibeachfl.gov

RJ BEHAR'S ROLE:

Structural and Electrical 40-Yr
Inspection and Certification

PROJECT STARTED: 4/25/23
PROJECT COMPLETED: 9/2024
COST/FEES PAID: \$13,112.72
CONSTRUCTION COST: N/A

RJ BEHAR'S KEY PERSONNEL:

Juan H. Vazquez, PE, PH, BCEE
Principal in Charge

Greg Dover, PE
Senior Structural Engineer

Carmelo Ramos, PE
Electrical Engineer

Jossmel Cruz Garcia, PE
Structural Engineer

R.J. Behar & Company, Inc. (RJ Behar) was contracted by the City of Miami Beach to conduct a 40-yr inspection and certification of a building at 225 Washington Ave, Miami Beach, which is located within the Washington Dog Park and Annex.

The scope of work for the 40-yr certification, included inspection of the life/safety components of the building (structural and electrical) and provide the certification form.

1. *Structural Inspection:*
 - a. *Conduct a buildings structural vulnerability inspection of the visual and accessible areas only.*
2. *Electrical Inspection:*
 - a. *Visual inspection of primary electrical systems such as main power distribution, etc.*
 - b. *Visual inspection of secondary electrical systems such as lighting, receptacles, lightning protection, and conduits.*
3. *Inspection Report (Structural and Electrical)*

RJ Behar provided an inspection report, indicating the deficiencies found (if any) of the building structural and electrical systems, elements, and miscellaneous components. RJ Behar also included preliminary recommendations for retrofits or repairs of the deficiencies found, including a preliminary estimate of probable construction costs. A digitally signed and sealed report for structural and electrical was delivered, including the certification form.

The inspection followed the guidelines of the Miami Beach Building Department Minimum Inspection Procedural Guidelines for Building Structural Recertification.





PUMP STATION HOUSING INSPECTION, CONTROL BUILDING ON PUMP STATION S-4/S-5 – SOUTH BROWARD DRAINAGE DISTRICT

CLIENT:

South Broward Drainage District

Mr. Luis Ochoa, PE – District Director

6591 SW 160 Avenue

Southwest Ranches, FL 33331

Tel: (954) 680-3337, ext. 203

E-mail: luis@sbdd.org

RJ BEHAR'S ROLE:

Structural Inspection and Report

PROJECT STARTED: 02/14/2024

PROJECT COMPLETED:

03/28/2024

COST / FEES PAID: \$5,841.00

CONSTRUCTION COST: N/A

RJ BEHAR'S KEY PERSONNEL:

Robert J. Behar, PE

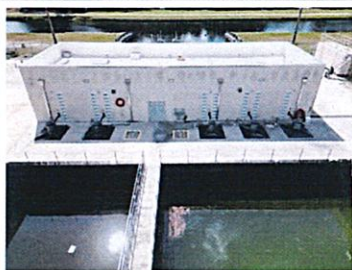
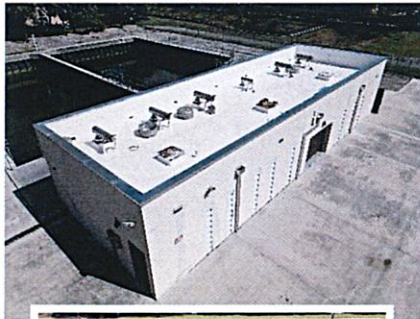
Principal in Charge

Jossmel Cruz-García, MS, PE

Project Manager

Esteban Aldana, EI

Project Engineer



The South Broward Drainage District retained RJ Behar & Company, Inc. (RJ Behar) to provide structural inspections of the control building Pump Station S-4/S-5. The purpose of the inspection was to assess the condition and integrity of the concrete structure on the property. The structural inspections of the building included the foundation, roof, beams, roof slab, walls, surface coatings.

The structural inspection of the South Broward Drainage District control building Pump Station S-4/S-5 revealed various types of cracks throughout the concrete structure. These cracks, including horizontal mortar cracks, T-beam slab longitudinal cracks, CMU diagonal cracks, opening corner cracks, and tie-beam cracks, were observed to varying extents but generally did not compromise the overall integrity of the building. Despite the presence of cracks, the structure was found to be in satisfactory condition, with no significant structural issues detected. The observed cracks are likely attributable to factors such as natural settlement over time, periodic vibrations, and lateral movement of the building. Additionally, the proximity of periodic blasting activities from a nearby quarry may contribute to some unnatural movement, as evidenced by the higher occurrence of cracks compared to similar buildings of the same age in other locations.

Recommendations

Based on the findings of the inspection, the following recommendations were provided:

- For hairline cracks or minor cracking (cracks with a width less or equal to 0.012 inches), seal the cracks with a suitable penetrating sealant to help prevent moisture infiltration and further deterioration.
- For moderate cracking, seal with epoxy or polyurethane injection to fill and stabilize the crack. A moderate is considered for cracks with a width more than 0.012, but less than 0.125 inches.
- Consider routine maintenance including sealing cracks and reapplying surface coatings, to prolong the lifespan of the concrete structure. When repairing the cracks, mark the end of the crack with a pen along with the date, so that any growth of crack is easily recognized.
- Conduct periodic inspections to monitor the condition of the structure and address any emerging issues promptly.

Overall, while the presence of cracks is indicative of some degree of movement and aging in the structure, the South Broward Drainage District control building Pump Station S-4/S-5 remains structurally sound and suitable for continued use. Regular monitoring and maintenance will be essential to address any emerging issues and ensure the long-term integrity of the concrete structure.





EVALUATION CRITERIA
Procurement & Contracts Department

RLI26-006 - CONTINUING CONTRACT FOR PROFESSIONAL STRUCTURAL ENGINEERING SERVICES - CCNA

Proposer TECTONIC Group Int.

SECTION NUMBER AND DESCRIPTION		POINTS	SCORE
1	Prior experience of the firm with projects of similar size and complexity:	0-15	2
2	Qualifications of personnel, including subconsultants:	0-15	3
3	Proximity of the nearest office to the project location:	0-15	5
4	Current and Projected Workload	0-15	
5	Demonstrated Prior Ability to Complete Project on Time	0-15	
6	Demonstrated Prior Ability to Complete Project on Budget	0-15	
7	Local Vendors Program	0-5	Completed by Procurement
TOTAL		95	

COMMENTS:

Many issues with this vendor.



Signature of Evaluator

3/1/2026

Date

GEORGE BENAVENTE, JIA

Printed Name

Qualifications Of Bidders

To demonstrate qualifications to perform the work, and to be considered for award, each bidder shall submit at least three (3) business customer references. Provide information for business customers for whom you have performed work of this nature which you list as references, excluding the City of Pompano Beach. (Use an attachment if necessary.)

1. Name and address of customer: Miami-Dade County (Port Miami)
1080 Caribbean Way, Suite 500 Miami, FL 33132

Contact person name, telephone number and email address: _____
Vivian Alfonso, (786) 451-7722, vivian.alfonso@miamidade.gov

Description of services provided and date(s) of service: Projects includes Owner Representation & Project Management & CEI services for projects at Port Miami. Services include Structural Threshold Special Inspections and Construction Supervision for multiple Capital Improvement Projects located at Port Miami.

2. Name and address of customer: City of Hollywood,
2600 Hollywood Blvd Hollywood, FL 33020

Contact person name, telephone number and email address: _____
Mark Johnson, (512) 497-6037, mljohson@hollywoodfl.org

Description of services provided and date(s) of service: CEI Projects include sidewalk replacement wale restorations, new ADA ramps, utility relocation, milling, & resurfacing of city of Hollywood multiple Street.

3. Name and address of customer: Miami-Dade County
1080 Caribbean Way, Miami, FL 33132

Contact person name, telephone number and email address: _____
Victor Gutierrez, (305) 347-4802, victor.gutierrez@miamidade.gov

Description of services provided and date(s) of service: Provided CEI services for Port Miami new bridge. Performed structural & building inspection, threshold inspection and material sampling and testing. Reviewed projects schedule, and cost management.



2. TECHNICAL APPROACH

TGI team has been managing similar projects. We will oversee effective communication, coordination of resources, and resolution of issues related to project(s). We will also work to ensure that the project is completed successfully, on time, and within budget. Our project staff will focus on providing day-to-day design, construction oversight and conflict resolution. We will also oversee and track the project's documentation (daily, weekly and monthly reports), citizen complaints and resolutions, submittals and approvals, requests for information, records of changed conditions, contractor proposals, meeting agendas and minutes, periodic project reports, plans modifications, change orders, final estimates, schedule reviews, closeout inspections, final drawings, and warranty inspections.

We are certified, experienced and have been working on type of projects required as part of this contract: Municipal Buildings, Bridge Projects, Seawall, Structural Condition Assessment, Special Inspection, 40-50 Years Building Recertifications (for details please refer to past performance similar projects section).

2.1. Project Understanding

We are familiar with the city Capital Improvement Program. The City of Pompano Beach has a well-structured Capital Improvement Plan (CIP) that outlines the funding for the construction, acquisition, and rehabilitation of the city's facilities, infrastructure, and equipment over the next five years. The City of Pompano Beach is actively involved in various structural engineering projects, including the management of Capital Improvements, Inspections, and GIS. These divisions are responsible for the design, permitting, construction, and inspection of a wide range of projects such as roads, bridges, marine, utilities, parks, and buildings. The city's engineering team is dedicated to serving the community and ensuring that projects meet the city's standards and expectations.

The scope of City of Pompano Beach contract for Professional Structural Engineering Services will include repair, reconstruction, or replacement of Municipal Buildings, City's Building Repairs and Renovations, Seawall reconstruction and replacement, Parks and Recreational Facilities, Emergency Power Projects, Special Threshold Inspection, and Structural Condition Assessments.

The CIP for FY 2025-2029 has been approved by the City Commission. The plan includes projects such as road resurfacing, electrical rehabilitation, and water treatment plant expansion, with adjustments made to align with the city's financial resources and community needs.

The City Commission also approved a five-year capital improvement plan for fiscal years 2026 through 2030, which includes essential projects aimed at enhancing the city's infrastructure and services. Notably, the commission decided to redirect funds from a Habitat for Humanity project to the Northwest Community Redevelopment Agency due to a reduction in the millage rate.

The City of Pompano Beach continues to work on various capital improvement projects including the rehabilitation of Lift Station 61 and the WTP Electrical Master Plan Update. These projects are part of the city's ongoing efforts to improve its infrastructure and services.

The City of Pompano Beach's Capital Improvement Program (CIP) focuses on essential infrastructure upgrades that improve drainage, reduce flooding, and enhance public safety. These projects are part of a long-term plan to maintain and improve the city's roads, stormwater systems and public spaces. Each project is designed to meet current needs and support the future growth of our community. In addition to current projects, the city is producing a citywide Stormwater Master Plan.

The Pompano Beach Community Redevelopment Agency (CRA) has been actively engaging with the community to gather input and ensure that the redevelopment meets the needs of residents. Workshops and public meetings have been held to discuss the design and implementation of the new downtown area.



3. REFERENCES

Table 1 - Related Project References

Project Name	Agency	Project Description / Scope of Work	Start/End Dates	Project Cost	Client Contact Name/Email/Phone
Structural & Special Inspection & Administration	Miami-Dade County Port Miami	Projects includes Owner Representation & Project Management Services for projects at PortMiami. Services include Threshold Special Inspections and Construction Supervision for multiple Capital Improvement Projects located at PortMiami.	Sep 2024 - Present	\$500,000.00	Name: Vivian Alfonso Email: vivian.alfonso@miamidade.gov Phone: (786) 451-7722
Construction Administration & CEI Services	Miami-Dade County Port Miami	Projects include New Terminal V Building, Ancillary Cruise Terminal, Parking Garage Structure, Flyover, and Roadway & Civil Infrastructure. Projects Services includes Architectural & Engineering design submittal review, construction project schedule review, construction cost management, perform construction engineering & inspections (CEI), construction materials sampling and testing, structural, building, threshold inspection, piling and bridge inspection.	July 2021 - March 2023	\$15,475,290.00	Name: Victor Gutierrez Email: victor.gutierrez@miamidade.gov Phone: (305) 347-4802
Multiple Streets Improvements	City of Hollywood	CEI Projects include sidewalk replacement, swale restorations, new ADA ramps, utility relocation, milling & resurfacing of city of Hollywood multiple streets; North Park Road, West Park Road, North 26 Avenue, Raleigh Street and Sarazen Drive.	August 2022 - Jul 2023	\$1,777,212.00	Name: Mark Johnson Email: mjjohnson@hollywoodfl.org Phone: (512) 497-6037
I-595 Express	FDOT / ACS Infrastructure	FDOT 1.24 billion Design, Build, Finance, Operation & Maintenance (D/B/F/O/M) PPP I-595 project through the 35-year agreement term in Broward County, Florida, for a total project length of 10.5 miles with 64 bridges. Acted as owner's representative, performed CEI inspection, quality management, reviewed and approved engineering design & construction plans.	2009 - 2020	1.24 Billion	Name: Matt Pierce Email: mpierce@i595express.com Phone: (219) 628-3306
SH-288	TXDOT / ACS Infrastructure	TXDOT \$815 million, Design Build Finance Operation & Maintenance PPP project 10.3-mile segment of SH 288 in Harris County. Initial Configuration included: Four (4) tolled lanes within existing SH 288 median - New Beltway 8 interchange. Provided CEI services, reviewed and approved safety manual, design & construction quality plans, O&M Plan, and Procedures. Supported & advised project CEO and Managers.	2016 - 2021	\$815 Million	Name: Enrique Martin Email: emartinvr@iridium-accs.com



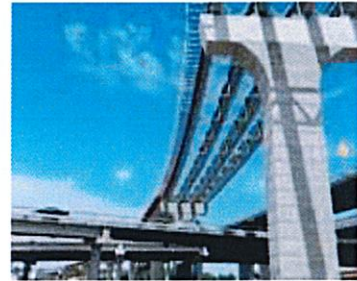
I-595 Express, Fort Lauderdale, Florida

Design, Build, Finance, Operation & Maintenance (D/B/F/O/M). Provided CEI Services, Quality Management, Safety Management and Auditing Services during Design, Construction, Operation, and Maintenance on Public Private Partnership (PPP) consortium created by ACS Infrastructure Development. Served as Consultant to the Concessionaire to (D/B/F/O/M) of the I-595 Corridor Improvements project through the 35-year agreement term in Broward County, Florida, for a total project length of 10.5 miles with 64 bridges. Performed CEI inspection and quality management, reviewed and approved engineering construction plans, Project Quality Manual, Safety Manual, Design & Construction Quality Plans.



SH 288 Blue Ridge Transportation Group, Houston, Texas

Design Build Finance Operation & Maintenance Project. Providing Construction Engineering & Inspection, Quality Management, and Auditing services during design & construction on PPP project 10.3-mile segment of SH 288 in Harris County. Initial Configuration includes: Four (4) tolled lanes within existing SH 288 median - New Beltway 8 interchanges, all 8 direct connectors. Reviewed and approved project Quality Manual, Safety Manual, Design Quality Plan, Construction Quality Plan, Operation & Maintenance plan, and the Procedures. Supported and advised project CEO and Managers. Directed and Supervised CEI Resident Engineer, and Design and Construction Quality Managers.



Ottawa Light Rail Transit (OLRT), Ottawa, Canada

Design, Construction, Operation & Maintenance. Provided construction management & quality management services during design & construction period, on Public Private Partnership (PPP) forty (40) years agreement with a consortium; Rideau Transit Group (RTG) the Concessionaire to design, build, finance, operate and maintenance (D/B/F/O/M). The OLRT Construction Works involved 14 stations, upgrading and converting the existing Bus Rapid Transit system (BRT) into a Light Rail Transit system (LRT). The OLRT Construction and Design Works involved upgrades & repair of existing stations, construction of new stations, construction of portions of a new track not within the existing infrastructure and tunneling through downtown Ottawa. Acted as owner representative.



QuEST Engineering & Testing Overview:

QuEst Engineering & Testing Broward County (Certified CBE, MBE, DBE) firm founded in 1998 in Florida. Quest will provide assistance and support to Tectonic Group International LLC (TGI) in the performance of engineering services for the Town of Palm Beach as Part of RFQ 2024-1. Quest will perform all Quality Assurance Sampling & Testing, as required by the project specification.

QuEST Project Experience

Infrastructure:

- Utility Improvements, Surfside, Florida
- Utility Improvements @ Belvedere, West Palm Beach, Florida

Roadway Projects:

- Access Road from Flamingo Road to Miramar WWTP
- Pembroke Road/SW 145 Avenue Extension, Miramar, Florida

Civil Projects:

- Miramar East Water Treatment Plant, Miramar, Florida
- Miramar West Water Treatment Plant, Miramar, Florida
- Miramar Wastewater Treatment Plant, Miramar, Florida
- Hollywood Water Treatment Plant, Hollywood, Florida

Aviation Facilities:

- Terminal 1 Expansion @ Fort Lauderdale International Airport
- Learjet Hangar @ Fort Lauderdale International Airport
- Concourse Throat Expansion @ Ft. Lauderdale International Airport
- FBO Hangar & Office Bldg. @ Ft. Lauderdale Executive Airport



- Taxi lanes & Apron Expansions, @ Ft. Lauderdale Int'l Airport
- Terminal 3 / BHS JetBlue, @ Ft. Lauderdale Int'l Airport
- Terminal 1 / Southwest Airline @ Ft. Lauderdale Int'l Airport

Hadonne Surveying Overview:

Hadonne, a Florida SBE firm, was established in 2001. Since its commencement, the firm has diligently worked to meet the needs of both our private and public sector clients. Hadonne is FDOT certified in categories 8.1 (Control Surveying), 8.2 (Design, Right of Way & Construction Surveying), and 8.4 (Right of Way Mapping). HADONNE specializes in providing Surveying and Mapping, Utility Coordination and Sub-Surface Utility Engineering (S.U.E.) services. HADONNE's licensed surveyors and technicians, and land-surveying group bring broad and diverse experience on all types of surveys. Served hundreds of different clients on projects of all sizes, by organizing market specific teams. Clients benefited from experienced staff familiar with the unique aspects of their projects. HADONNE also leverages the most state-of-the-art technology in the field and office. HADONNE's survey field crews mobilize in vehicles fully equipped with the latest data collection and communication technology for high-definition surveying. Its professional services are delivered in the formats that clients require. HADONNE not only owns and operates the latest computer hardware; software and communications technologies, those systems, and software are upgraded regularly so clients benefit from the efficiency and accuracy of the latest enhancements. All business operations are fully integrated with networked administrative computing capabilities, CAD workstations, and sophisticated mapping and plotting.

Florida Department of Transportation Surveys

Surveying and mapping are fundamental for any roadway design work. It is a vital function linking the interdisciplinary elements of a project from planning through design, right-of-way acquisition, and construction, to final asset management. HADONNE has unlimited certification with FDOT under Categories 8.1, 8.2 and 8.4. [SUPPORTING FDOT DESIGN CONSULTANTS](#) with a detailed surface and subsurface mapping of all existing utilities during the planning and design phase of a transportation project, which results in significant time and cost savings during the construction phase.

HADONNE is committed to obtaining accurate survey data on the horizontal and vertical location of all existing facilities and provides the client with a computer-based drawing file and/or hard copy reports of all data collected in the field. This information will aid the design consultant in making the proper adjustments to their design in order to reduce if not eliminate costly and timely utility relocation work.

Subsurface Utility Engineering

HADONNE offers a full range of subsurface utility engineering (S.U.E.) services to both its public and private sector clients throughout the South Florida area. Its staff of professional utility locators, surveyors, and utility coordinators have the expertise required to deliver accurate utility information needed by clients, consulting engineers, contractors, and designers to make informed project decisions.

Photogrammetry

Accurate 3D imaging and photogrammetric data accelerate construction projects. HADONNE prioritizes efficiency, even when time constraints are tight, supporting clients with quick yet precise drone data point surface modeling, and custom photogrammetry services.

Ground Penetration Radar

HADONNE Ground Penetrating Radar (GPR) in combination with Electric Magnetic Locator inspection services, quickly and accurately locate cracks, objects such as concrete, asphalt, metals, pipes, cables, hazards in concrete structures and other mediums using safe radar capabilities before ground is broken. This method of sub-surface surveying investigates underground utilities. This is crucial for design, construction and renovation, in order to prevent damage to the project. HADONNE commitment to precision and reliability ensures Town has the information needed to protect its assets.

Laser Scanner

We understand that each project is unique, utilizing the latest 3D laser scanning technology to deliver accurate and detailed as-built information, capturing highly detailed and accurate data and a rigorous quality assurance process to ensure that our results meet the highest standards of accuracy and precision. With the 3D laser scanning as-built surveys, client can make informed decisions based on precise and reliable data, improving efficiency, and reducing cost. We work closely with our clients to provide customized solutions to their project needs.



Hadonne will provide assistance and support Tectonic Group International (TGI) in the performance of the following survey services:

- Sub-surface mapping of all existing utilities during the planning and design phase.
- Incidental/required engineering surveys for compliance with Town, Americans with Disabilities Act (ADA) regulations.
- Facilitate any permits, easements, recording of easement, additional inspections requiring survey including public outreach, right-of-way, or landscape removal coordination.
- Roadway Cross Sections.
- Conduct final as built survey.

G & G Engineering Group Overview:

G & G Engineering Group, Inc. is a Florida Electrical Engineering firm, and was established on August 17, 2006, with the registered number P06000107264.

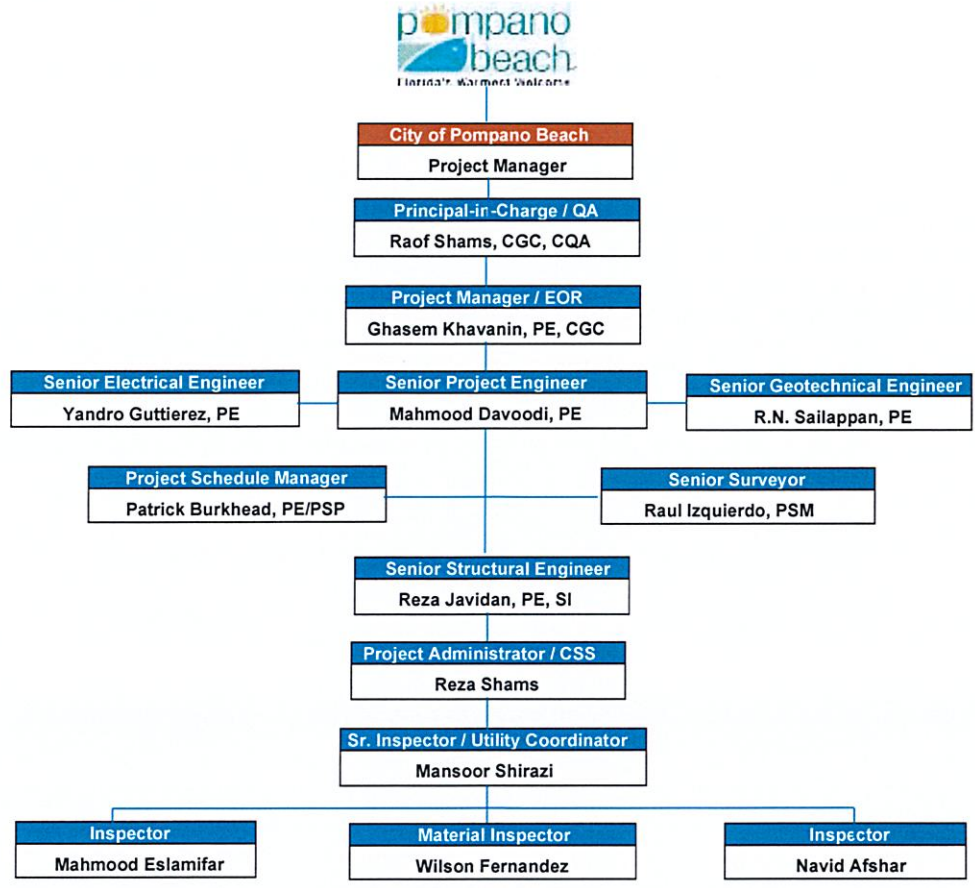
G & G services include design and specification of complex electrical systems, as well as construction documents preparation, field inspections, production, coordination and project management from conceptual design stages through final design and construction administration.

G & G Project Experience

Projects from design of power distribution, lighting, fire alarm, CCTV, intercom, nurse call and emergency systems mainly for health care, to educational and government facilities. G & G are involved in cost estimating, project coordination involving engineers, architects, contractors, and clients; as well as management of projects involving several government agencies and municipalities, such as: Miami-Dade County Buildings Structural Inspection, Jackson Health System, Miami-Dade County Public Schools and Miami International Airport.



5. ORGANIZATIONAL CHART



In addition to the proposed staff, we do have a pool of engineers/inspectors (if needed)

6. STATEMENT OF SKILLS AND EXPERIENCE OF PROJECT TEAM

Principal-In-Charge / QA - Raof Shams, PMP, CGC, CQA: Mr. Shams has thirty-seven (37) years of engineering and construction experience, including 14 years on various CEI projects, and 23 years of executive and general supervision on construction of mega infrastructure projects worldwide, capable of managing several projects simultaneously. Experience in PPP, Design & Build, Finance and Construction Management at Risk, Construction Engineering, Constructability Review, Value Engineering, Inspection, Safety and QA/QC Programs per OSHA, NEBOSH, ACI, FDOT, FAA, AASHTO, ASTM, ANSI, EN & ISO requirements. Projects include airports, mega rail & APM systems, rail stations, MEP, underground (tunneling, cut & cover), pre-cast, cast-in-place, incremental launching, balanced cantilever methods with travelers, high level segmental bridges, conventional bridges, BRT, buildings, and Highways with bridges.

Senior Project Manager / EOR - Ghasem Khavanin, PE, CGC: Mr. Khavanin has thirty-seven (37) years of engineering and construction management as the city official, contractor and engineer's perspective. His experience ranges from design earthwork operation, drainage construction, asphalt paving, concrete testing, to inspection of segmental and AASHTO/FIB bridges. During his distinguished career, Mr. Khavanin has worked on many projects as principal, resident engineer, as well as project engineer and field engineer on major infrastructure projects. He has also designed and inspected all types of bridges, roadway embankments and concrete structures. Projects include bridges, drainage, roadway, asphalt, buildings, and city infrastructures.



segmental and AASHTO/FIB bridges, as per FDOT & Florida Building Code. During his distinguished career, Mr. Shirazi has worked on many projects in the dual capacity of Senior Roadway/Utility/Bridge Inspector, as well as Project Engineer and Field Engineer on major infrastructure projects. Mr. Shirazi is FDOT CTQP & MOT certified. During his distinguished career, Mr. Shirazi has worked on many projects in the dual capacity of Senior Roadway/Utility/Building/Bridge Inspector, as well as Project Engineer and Field Engineer on major infrastructure projects.

Engineering Inspector - Navid Afshar: Mr. Afshar has more than 14 years' construction engineering & inspection experience, duties including supervision of inspection and verification of the quality control/quality assurance process and safety for all aspects of highway and bridge construction. Experience includes multiple streets, lighting, landscaping, underground utilities including water and sewer lines, street lighting, embankment, subgrade, lime rock base and asphalt construction inspection, drainage inspection, and MOT. Mr. Afshar is knowledgeable in pay item measuring, computations, and accurate site source record documentation. Performed daily inspection, under professional engineer supervision.

Engineering Inspector - Mahmood Islamifar: Mr. Eslamifar has been responsible for the inspection and supervision of construction activities such as signalization, striping, drainage, asphalt, earthwork, and MOT. A major part of his responsibilities is to ensure that these activities are constructed in accordance with FOOT Standards, Specifications, and Plans. He also has experience with preparing monthly and final estimates packages.

6.1. Staff Training & Certifications

Table 2 – Construction Administration Staff Training

Team Member	Role	ACI Transportation	Advanced MOT	Asphalt	Augercast Pile	Certified General Contract	Concrete Inspection	Critical Structures	Drilled Shaft Inspection	Earthwork Inspection	Erosion Control	Final Estimates	Grouting	Hazmat	Intermediate MOT	ISO	OSHA	Professional Engineer	Pile Driving Inspection	Quality Management	Storm Water Management	Rail Road Safety	Traffic Signal
Ghasem Khavanin, PE	Project Manager / EOR	x				x	x					x					x	x		x	x		x
Mahmood Davoodi, PE	Sr. Project Engineer	x										x					x	x		x	x	x	x
Reza Javidan, PE/SI	Sr. Structural Engineer	x			x			x	x								x	x					x
Reza Shams	Proj. Admin / Control	x	x	x	x		x	x	x	x	x	x	x	x	x		x		x	x	x	x	x
Mansoor Shirazi	Sr. Field Engineer	x	x	x	x		x	x	x	x	x	x	x	x			x		x	x	x	x	x
Mahmood Eslamifar	Inspector	x	x	x	x		x	x	x			x		x	x		x			x	x		x
Navid Afshar	Inspector			x					x						x		x						x
Raof Shams	Principal / QA	x	x	x	x	x	x		x	x	x	x	x			x	x		x	x	x	x	x

COMPLETE THE PROPOSER INFORMATION FORM ON THE ATTACHMENTS TAB IN THE EBID SYSTEM. PROPOSERS ARE TO COMPLETE FORM IN ITS ENTIRETY AND INCLUDE THE FORM IN YOUR PROPOSAL THAT MUST BE UPLOADED TO THE RESPONSE ATTACHMENTS TAB FOR THE RFP IN THE EBID SYSTEM.

PROPOSER INFORMATION PAGE

RFP RLI26-006, Continuing Contracts for Professional Structural Engineering Services - CCNA
(number) (RFP name)

To: The City of Pompano Beach, Florida

The below named company hereby agrees to furnish the proposed services under the terms stated subject to all instructions, terms, conditions, specifications, addenda, legal advertisement, and conditions contained in the RFP. I have read the RFP and all attachments, including the specifications, and fully understand what is required. By submitting this proposal, I will accept a contract if approved by the City and such acceptance covers all terms, conditions, and specifications of this proposal.

Proposal submitted by:

Name (printed) Raof Shams Title President
Company (Legal Registered) Tectonic Group International, LLC
Federal Tax Identification Number 65-1001637
Address 931 SW 171 Terrace
City/State/Zip Pembroke Pines. Florida 33027
Telephone No. (954) 610-4482 Fax No. (954) 436-8461
Email Address raof.shams@tecgi.com

TIER 1/TIER 2 COMPLIANCE FORM

IN ORDER FOR YOUR FIRM TO COMPLY WITH THE CITY'S LOCAL BUSINESS PROGRAM AS A TIER 1 OR TIER 2 VENDOR, BIDDERS MUST COMPLETE THE INFORMATION BELOW AND UPLOAD THE FORM TO THE RESPONSE ATTACHMENTS TAB IN THE EBID SYSTEM.

TIER 1 LOCAL VENDOR

X My firm has maintained a permanent place of business within the city limits and maintains a staffing level, within this local office, of at least 10 % who are residents of the City of Pompano Beach.

And/Or

X My firm has maintained a permanent place of business within the city limits and my submittal includes subcontracting commitments to Local Vendors Subcontractors for at least 10 % of the contract value.

Or

____ My firm does not qualify as a Tier 1 Vendor.

TIER 2 LOCAL VENDOR

X My firm has maintained a permanent place of business within Broward County and maintains a staffing level, within this local office, of at least 15% who are residents of the City of Pompano Beach

And/Or

X My firm has maintained a permanent place of business within Broward County and my submittal includes subcontracting commitments to Local Vendors Subcontractors for at least 20% of the contract value.

Or

____ My firm does not qualify as a Tier 2 Vendor.

I certify that the above information is true to the best of my knowledge.

12/18/2025

(Date)

Tectonic Group International

(Name of Firm)

BY: Raof Shams

(Name)



EVALUATION CRITERIA

Procurement & Contracts Department

RLI26-006 - CONTINUING CONTRACT FOR PROFESSIONAL STRUCTURAL ENGINEERING SERVICES - CCNA

Proposer RITZEL-MASON Inc

SECTION NUMBER AND DESCRIPTION		POINTS	SCORE
1	Prior experience of the firm with projects of similar size and complexity:	0-15	
2	Qualifications of personnel, including subconsultants:	0-15	
3	Proximity of the nearest office to the project location:	0-15	5
4	Current and Projected Workload	0-15	
5	Demonstrated Prior Ability to Complete Project on Time	0-15	
6	Demonstrated Prior Ability to Complete Project on Budget	0-15	
7	Local Vendors Program	0-5	Completed by Procurement
TOTAL		95	

COMMENTS:

Survey company

[Signature]
Signature of Evaluator

3/1/2026
Date

GEORGE BUENAVENTURA
Printed Name

TECHNICAL APPROACH

Dear City of Pompano Beach Procurement and Contract Administration Team,

Ritzel-Mason's has had the privilege of working with the City on projects in the past. Ritzel-Mason's team members have a proven track record of bringing the key elements and resources necessary to generate a successful partnership as your on-call continuing services for surveying, mapping and SUE. Experience, communication, commitment, and expertise are fundamental qualities of our team and the cornerstone of our relationship with the City for successfully executing this contract. Representing the City's best interests are at the core of our actions. Never taking success for granted, we understand the importance of continuously working with the City to improve our processes and provide reliable, quality products that meet all budget and scheduling requirements, while maintaining a high-level of respect for the community where we work and serve.

UNDERSTANDING OF SCOPE, NEEDS, & ISSUES: Our approach to a continuing services contract is focused on responsiveness, communication, performance, quality, and schedule. Knowing any given task may be both high-profile and time-sensitive, we take the approach that all requests *will get a response within four hours of receipt*. This is accomplished by having both a Contract Manager and Project Manager, equally experienced and qualified with the City, capable of scoping, estimating, and managing any given assignment. On typical task assignments, Ritzel-Mason's Contract Manager, Dennis Ritzel, PSM will receive an email request for a proposal or a new service from the City Project Manager. Mr. Ritzel will first meet internally with the City project manager within one day regarding any scope clarification necessary to prepare scope and proposal. Should additional information or clarification be required from other team members, our Contract Manager can facilitate the process. This proactive communication helps reduce the need for excessive hands-on involvement by the City Project Manager, while keeping him/her informed of all pertinent task developments via email or phone. Our team's progress will be documented utilizing monthly progress reports. Additional updates for all tasks will be provided upon request prior to any internal City production meetings.



Qualifications Of Bidders

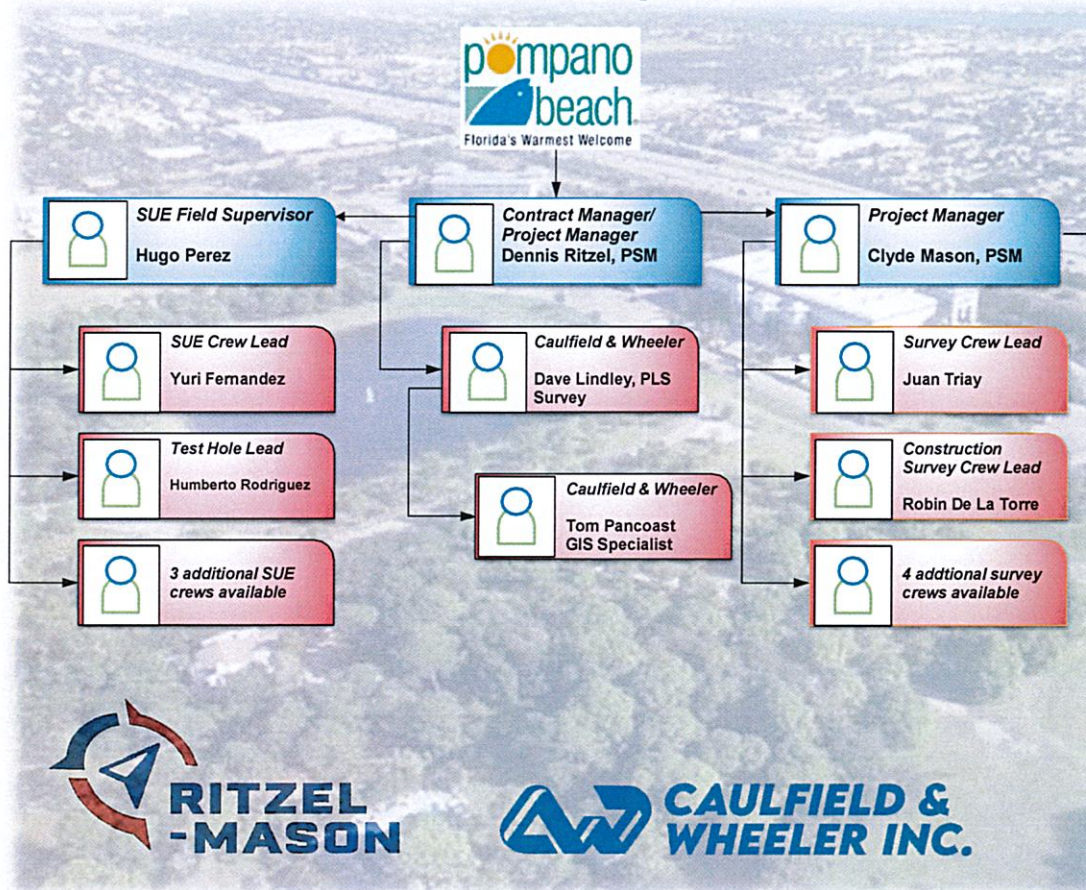
To demonstrate qualifications to perform the work, and to be considered for award, each bidder shall submit at least three (3) business customer references. Provide information for business customers for whom you have performed work of this nature which you list as references, excluding the City of Pompano Beach. (Use an attachment if necessary.)

1. Name and address of customer: Ranger Construction Industries
1645 North Congress Avenue, West Palm Beach, Florida 33409
Contact person name, telephone number and email address: Greg Reilly, Project manager
561-784-3481 / greg.reilly@rangerconstruction.com
Description of services provided and date(s) of service: Construction Survey Services,
as-built survey services, and topographic survey services
2019 - 2025 (ongoing)

2. Name and address of customer: Craven Thompson & Associates
3563 NW 53rd Street, Fort Lauderdale, Florida 33309
Contact person name, telephone number and email address: Raymond Young, PSM
954-739-6400 / ryoung@craventhompson.com
Description of services provided and date(s) of service: subsurface utility engineering
(SUE)
2019 - 2025 (ongoing)

3. Name and address of customer: Baxter & Woodman Consulting Engineers
1601 Forum Place, Suite 400, West Palm Beach, Florida 33401
Contact person name, telephone number and email address: Sira Prinyavivatkul, PE
561-425-7718 / sprinyavivatkul@baxterwoodman.com
Description of services provided and date(s) of service: topographic survey services
for municipalities
2020 - 2025 (ongoing)

Ritzel-Mason Team Organizational Chart



SKILLS AND EXPERIENCE

UNDERSTANDING THE SCOPE OF WORK:

BOUNDARY SURVEYS: Ritzel-Mason is familiar with boundary survey statutes as set forth by the State of Florida and all boundary surveys are performed under those statutes. It's all too often that boundary surveys are improperly conducted throughout Florida. Ritzel-Mason follows the letter of the law and puts forth much effort in retracing the steps of former surveyors. This includes properly searching, finding, and locating field monumentations and section corners.



TOPOGRAPHIC / ENGINEERING SURVEYS: Ritzel-Mason has an extensive history of performing successful topographic and engineering surveys for many types of clients, public and private including FDOT, municipalities, construction firms and the City of Pompano Beach itself. The first step toward a successful topographic survey is choosing the best survey tools for the job. Some of these tools consist of conventional surveying equipment to base & rover GPS, VRS GPS or aerial surveys. We understand that the best tool for the job dictates the schedule and cost. We discuss

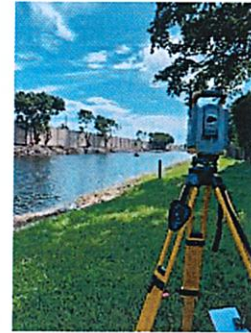
all options with our Clients including the City to make recommendations based on the assessment of the situation and project cost. Our goal is to complete all topographic surveys efficiently, within budget and within the schedule.

GPS SERVICES: Ritzel-Mason has years of experience with GPS services. Because of our extensive construction background, we commonly create machine control models for many different softwares including Trimble, Leica, and Topcon Machine Control Software. We have a through QA/QC process based off of the CADD plans we are provided versus the hard copies of the plans. We are fully capable of static network control for high accuracy horizontal survey control or Trimble VRS virtual base stations GPS surveying.

EASEMENTS: Ritzel-Mason is experienced with plotting recorded easements being platted or metes and bounds. We have the expertise to find any publicly readily available easement documents. We commonly work with title search companies to verify all existing easements not publicly available. We can create sketch & legals establishing new easements. It's common that we are requested to create a sketch & legal dedicating an easement centered to quality level B utility designates performed by the Ritzel-Mason SUE team.



RIGHT-OF-WAY SURVEYS: Ritzel-Mason is pre-qualified with Florida Department of Transportation (FDOT) in work group 8.4 for right of way mapping. Our officers have a long history of right-of-way mapping production. Ritzel-Mason is fully capable of supporting the efforts of producing right-of-way control surveys, right-of-way maintenance maps, right-of-way monumentation maps. Any title document review and analysis will be performed and plotted onto the maps. Ritzel-Mason will attend any review meetings necessary to support the research performed. Proper oversight will be utilized to ensure that right-of-way mapping projects are delivered on schedule.



HYDROGRAPHIC SURVEYS: Ritzel-Mason owns and operates a Seafloor Systems Hydrone capable of single and dual beam sonar. Single beam sonar signals bounce off of the bottom of water. Dual beam sonar signals have the capability of detecting the level of silt at the bottom of the waterway. An RTK GPS unit or 360 prism can be mounted to the drone boat. The GPS unit or robotic total station can be set up to collect data at a predefined interval, such as every 10 feet. Elevation data can be downloaded remotely. The Hydrone is ideal for lakes and canals such as those within the City's boundaries. Data can always be verified with manual rod measures from our jon boat. Ritzel-Mason has assisted many of our Clients for the purpose of canal dredging.

AS-BUILTS (RECORD SURVEYS): In the early years of Ritzel-Mason, construction projects were the backbone of growing the firm. We have evolved from small-scale residential to large-scale government facilities such as airports and canals. We understand the need for an accurate comparison of constructed features to the engineer's design. We understand the tolerances set forth in the specification guidelines. Ritzel-Mason has submitted many projects to engineers for their approval of finalized construction and waterline as-builts to PBCWUD for certification of public utilities.

LASER-SCANNED SURVEYS: Ritzel-Mason owns and operates a Leica P30 laser scanner capable of collecting up to one million points per second with a realistic range of up to 300 feet. We are able to produce data and maps capable of 1/2-inch or even 1/4-inch contours. We have also utilized laser scanning on roadway projects for speed and safety. Remote sensing technology keeps surveyors out of the roadway and out of harm's way.



RLI26-006 - CONTINUING CONTRACT FOR PROFESSIONAL STRUCTURAL ENGINEERING SERVICES - CCNA

Proposer Conemco Engineering, Inc.

SECTION NUMBER AND DESCRIPTION		POINTS	SCORE
1	Prior experience of the firm with projects of similar size and complexity:	0-15	14
2	Qualifications of personnel, including subconsultants:	0-15	13
3	Proximity of the nearest office to the project location:	0-15	12
4	Current and Projected Workload	0-15	0
5	Demonstrated Prior Ability to Complete Project on Time	0-15	0
6	Demonstrated Prior Ability to Complete Project on Budget	0-15	0
7	Local Vendors Program	0-5	Completed by Procurement
TOTAL		95	39

COMMENTS: _____ sound company with extensive experience.

OFFICE LOCATION IS CLOSE TO POMPAÑO (DAVIC OFFICE)

NEWER COMPANY.

Christopher R. Schlageter 3-10-26

 Signature of Evaluator Date



 Christopher Schlageter

 Printed Name

RLI26-006 - CONTINUING CONTRACT FOR PROFESSIONAL STRUCTURAL ENGINEERING SERVICES - CCNA

Proposer EAC Consulting

SECTION NUMBER AND DESCRIPTION		POINTS	SCORE
1	Prior experience of the firm with projects of similar size and complexity:	0-15	14
2	Qualifications of personnel, including subconsultants:	0-15	12
3	Proximity of the nearest office to the project location:	0-15	13
4	Current and Projected Workload	0-15	0
5	Demonstrated Prior Ability to Complete Project on Time	0-15	0
6	Demonstrated Prior Ability to Complete Project on Budget	0-15	10
7	Local Vendors Program	0-5	Completed by Procurement
TOTAL		95	49

COMMENTS: _____ Really liked their acknowledgment of estimated construction cost and actual cost in references. -ebuilder software user user. Hillsboro marina designed new seawall 2010 **75 Ft of wall.**

FENG WAS present FOR meeting

 ↓

Chief Structural Engineer

Christopher R. Schlageter 3-11-26

 Signature of Evaluator Date



 Christopher Schlageter

 Printed Name

RLI26-006 - CONTINUING CONTRACT FOR PROFESSIONAL STRUCTURAL ENGINEERING SERVICES - CCNA

Proposer HBC

SECTION NUMBER AND DESCRIPTION		POINTS	SCORE
1	Prior experience of the firm with projects of similar size and complexity:	0-15	14
2	Qualifications of personnel, including subconsultants:	0-15	10
3	Proximity of the nearest office to the project location:	0-15	12
4	Current and Projected Workload	0-15	0
5	Demonstrated Prior Ability to Complete Project on Time	0-15	0
6	Demonstrated Prior Ability to Complete Project on Budget	0-15	0
7	Local Vendors Program	0-5	Completed by Procurement
TOTAL		95	36

COMMENTS: _____ Thought company was capable but 100 pages of background and experience is excessive. *Like to SEE MORE STRUCTURAL specific projects,*

background - HBC Representative WAS present.

Christopher R. Schlageter 3-11-26

 Signature of Evaluator

Date



 Christopher Schlageter

 Printed Name

RLI26-006 - CONTINUING CONTRACT FOR PROFESSIONAL STRUCTURAL ENGINEERING SERVICES - CCNA

Proposer Kimley-Horn

SECTION NUMBER AND DESCRIPTION		POINTS	SCORE
1	Prior experience of the firm with projects of similar size and complexity:	0-15	14
2	Qualifications of personnel, including subconsultants:	0-15	13
3	Proximity of the nearest office to the project location:	0-15	14
4	Current and Projected Workload	0-15	0
5	Demonstrated Prior Ability to Complete Project on Time	0-15	0
6	Demonstrated Prior Ability to Complete Project on Budget	0-15	0
7	Local Vendors Program	0-5	Completed by Procurement
TOTAL		95	41

COMMENTS: _____ sound company and alot of pompano project

experience _____

-

-

- Christopher R. Schlageter 3-11-26

Signature of Evaluator

Date


 Christopher Schlageter

Printed Name

-

RLI26-006 - CONTINUING CONTRACT FOR PROFESSIONAL STRUCTURAL ENGINEERING SERVICES - CCNA


Proposer RJ Behar

SECTION NUMBER AND DESCRIPTION		POINTS	SCORE
1	Prior experience of the firm with projects of similar size and complexity:	0-15	14
2	Qualifications of personnel, including subconsultants:	0-15	11
3	Proximity of the nearest office to the project location:	0-15	12
4	Current and Projected Workload	0-15	0
5	Demonstrated Prior Ability to Complete Project on Time	0-15	0
6	Demonstrated Prior Ability to Complete Project on Budget	0-15	0
7	Local Vendors Program	0-5	Completed by Procurement
TOTAL		95	37

COMMENTS: _____ Company has respectable amount of experience. *DID NOT REALIZE*
STRUCTURAL
THEY HAD SUCH A EXPERIENCE.

Christopher R. Schlageter

3-11-26


 Christopher Schlageter

Signature of Evaluator

Date

Printed Name

RLI26-006 - CONTINUING CONTRACT FOR PROFESSIONAL STRUCTURAL ENGINEERING SERVICES - CCNA

Proposer Tectonic Group

SECTION NUMBER AND DESCRIPTION		POINTS	SCORE
1	Prior experience of the firm with projects of similar size and complexity:	0-15	11
2	Qualifications of personnel, including subconsultants:	0-15	11
3	Proximity of the nearest office to the project location:	0-15	11
4	Current and Projected Workload	0-15	0
5	Demonstrated Prior Ability to Complete Project on Time	0-15	0
6	Demonstrated Prior Ability to Complete Project on Budget	0-15	0
7	Local Vendors Program	0-5	Completed by Procurement
TOTAL		95	33

.CEI Inspections

COMMENTS: ___ liked their technical approach to problem and solution. Liked their interface with city PM

involvement. Small sub-consultant pool. *Not a local company in Pompano.*

Christopher R. Schlageter

 Signature of Evaluator

3-11-26

 Date



 Christopher Schlageter
 Printed Name

RLI26-006 - CONTINUING CONTRACT FOR PROFESSIONAL STRUCTURAL ENGINEERING SERVICES - CCNA

Proposer Conemco Engineering, Inc.

SECTION NUMBER AND DESCRIPTION		POINTS	SCORE
1	Prior experience of the firm with projects of similar size and complexity:	0-15	5
2	Qualifications of personnel, including subconsultants:	0-15	15
3	Proximity of the nearest office to the project location:	0-15	15
4	Current and Projected Workload	0-15	15
5	Demonstrated Prior Ability to Complete Project on Time	0-15	15
6	Demonstrated Prior Ability to Complete Project on Budget	0-15	15
7	Local Vendors Program	0-5	Completed by Procurement 0
TOTAL		95	80

COMMENTS:

- Strong South FL municipal experience (17+ years)
↳ seawalls, bridges, city bldgs., infrastructure
- Structural design, permitting, CA services, very small projects (10K, 15K, 30K)
- structured project delivery approach and QA/QC
- extensive local regulatory & municipal permitting authorities
- based in Davie, FL

Tammy Good
Signature of Evaluator

Digitally signed by Tammy Good
DN: C=US, E=tammy.good@copbl.com,
CN=Tammy Good
Reason: I am the author of this document
Date: 2026.03.11 08:50:33 -0400

3/11/2026
Date

Tammy Good
Printed Name

RLI26-006 - CONTINUING CONTRACT FOR PROFESSIONAL STRUCTURAL ENGINEERING SERVICES - CCNA

Proposer EAC Consulting, Inc.

SECTION NUMBER AND DESCRIPTION		POINTS	SCORE
1	Prior experience of the firm with projects of similar size and complexity:	0-15	15
2	Qualifications of personnel, including subconsultants:	0-15	15
3	Proximity of the nearest office to the project location:	0-15	15
4	Current and Projected Workload	0-15	15
5	Demonstrated Prior Ability to Complete Project on Time	0-15	15
6	Demonstrated Prior Ability to Complete Project on Budget	0-15	15
7	Local Vendors Program	0-5	Completed by Procurement
TOTAL		95	90

COMMENTS:

- Well established firm (30+ years in business)
- Extensive municipal experience, including agencies; Bro. Co, FDOT, Miami Dade, other S. Flo. municipalities.
- several City of Pompano projects in the past
- Strong structural and bridge engineering design capabilities
- Sub consultants; Keith Team, Tierra, RES, RUE
- Recognized industry performance and awards; ASCE Project of the Year
 ↳ ENR Top Design Firm rankings
- Ft. Lauderdale firm



 Signature of Evaluator

3-11-2026

 Date

DR. Tammy Good

 Printed Name

RLI26-006 - CONTINUING CONTRACT FOR PROFESSIONAL STRUCTURAL ENGINEERING SERVICES - CCNA

Proposer HBC Engineering Company

SECTION NUMBER AND DESCRIPTION		POINTS	SCORE
1	Prior experience of the firm with projects of similar size and complexity:	0-15	10
2	Qualifications of personnel, including subconsultants:	0-15	15
3	Proximity of the nearest office to the project location:	0-15	15
4	Current and Projected Workload	0-15	15
5	Demonstrated Prior Ability to Complete Project on Time	0-15	15
6	Demonstrated Prior Ability to Complete Project on Budget	0-15	15
7	Local Vendors Program	0-5	Completed by Procurement 2.5
TOTAL		95	87.5 87.5

COMMENTS:

- services provided; structural, civil and transportation
 ↳ structural condition assessments on bridges, retaining walls seawalls
 ↳ bridge design, structural engineering
- broad multidisciplinary engineering capabilities
- structured project management methodology (30/60/90/100%) QA, QC
- strong CA services and field support capabilities
- subconsultants; Keith Team, Moffatt & Nichol (coastal/environmental/expanding)
 ↳ FL Eng & Testing
- Ft. Lauderdale based firm - smaller, mid-size projects

Tammy Good

Digitally signed by Tammy Good
DN: C=US, E=tammy.good@copbfl.com,
O=Tammy Good
Reason: I am the author of this document
Date: 2026.03.11 08:50:33 -0400

3/11/2026

Tammy Good

Signature of Evaluator

Date

Printed Name

RLI26-006 - CONTINUING CONTRACT FOR PROFESSIONAL STRUCTURAL ENGINEERING SERVICES - CCNA

Proposer Kimley-Horn and Associates, Inc.

SECTION NUMBER AND DESCRIPTION		POINTS	SCORE
1	Prior experience of the firm with projects of similar size and complexity:	0-15	15
2	Qualifications of personnel, including subconsultants:	0-15	15
3	Proximity of the nearest office to the project location:	0-15	15
4	Current and Projected Workload	0-15	15
5	Demonstrated Prior Ability to Complete Project on Time	0-15	15
6	Demonstrated Prior Ability to Complete Project on Budget	0-15	15
7	Local Vendors Program	0-5	Completed by Procurement 2.5
TOTAL		95	92.5

COMMENTS:

- large, well-established engineering firm w/ strong FL. presence
↳ 1600+ professionals across 22 offices (40+ years in business)
- extensive structural engineering experience for municipal facilities
- Relevant bridge and infrastructure experience; fire stations, parking garages, coastal infrastructure, emergency operation centers
- currently working w/ City of Pompano on SE 6th Ter bridge (excellent quality service)
- nationwide company - locally based in Ft. Lauderdale, Boca Del Ray, Palm Beach Gardens

Dr. Jimmy Good
Signature of Evaluator

3-11-2026
Date

Dr. Tanny Good
Printed Name

RLI26-006 - CONTINUING CONTRACT FOR PROFESSIONAL STRUCTURAL ENGINEERING SERVICES - CCNA

Proposer R.J. Behar & Company, Inc.

SECTION NUMBER AND DESCRIPTION		POINTS	SCORE
1	Prior experience of the firm with projects of similar size and complexity:	0-15	15
2	Qualifications of personnel, including subconsultants:	0-15	15
3	Proximity of the nearest office to the project location:	0-15	15
4	Current and Projected Workload	0-15	15
5	Demonstrated Prior Ability to Complete Project on Time	0-15	8
6	Demonstrated Prior Ability to Complete Project on Budget	0-15	8
7	Local Vendors Program	0-5	Completed by Procurement 7.5
TOTAL		95	78.5

COMMENTS:

- established South Florida firm, founded 1999 (27+ years), 42 staff, 11 P.E.'s
- experienced structural and infrastructure projects
- projects would be managed by Gregory Dover, PE (35+ years of experience)
- broad structural engineering capabilities; bridges, culverts, retaining walls,
↳ pedestrian bridges, dock/piers, pump stations, H₂O control structures
- municipal experience; City of Pompano (Lyons PK); performed ok
- subconsultants; Javier Bidot (surveying), Tierra, QuEst - Pembroke Pines based firm

Dr. Sammy Hood
Signature of Evaluator

3-11-2026
Date

Dr. Sammy Hood
Printed Name

RLI26-006 - CONTINUING CONTRACT FOR PROFESSIONAL STRUCTURAL ENGINEERING SERVICES - CCNA

Proposer Tectonic Group International

SECTION NUMBER AND DESCRIPTION		POINTS	SCORE
1	Prior experience of the firm with projects of similar size and complexity:	0-15	5
2	Qualifications of personnel, including subconsultants:	0-15	8
3	Proximity of the nearest office to the project location:	0-15	15
4	Current and Projected Workload	0-15	15
5	Demonstrated Prior Ability to Complete Project on Time	0-15	15
6	Demonstrated Prior Ability to Complete Project on Budget	0-15	15
7	Local Vendors Program	0-5	Completed by Procurement 2.5
TOTAL		95	95 75.5

COMMENTS:

- established (20+ years)
- mid-size infrastructure and inspection firms
- strong CEI, structural inspection and construction oversight experience
- subconsultants; Hadonne Surveying, QuEST, F&G Engineering Group
- seemingly a firm that provides more construction/inspection focused services rather than structural design oriented
- firm located in Pompano Beach

Dr. Tammy Good
Signature of Evaluator

3-11-2026
Date

Dr. Tammy Good
Printed Name