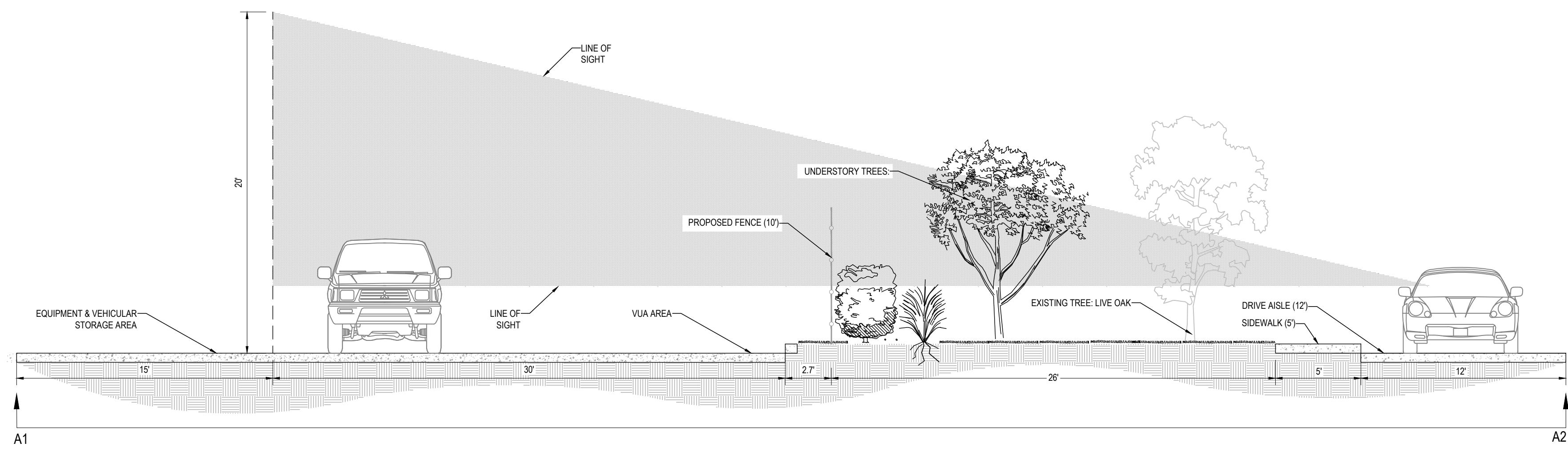
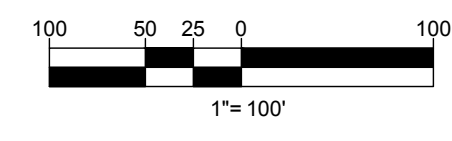
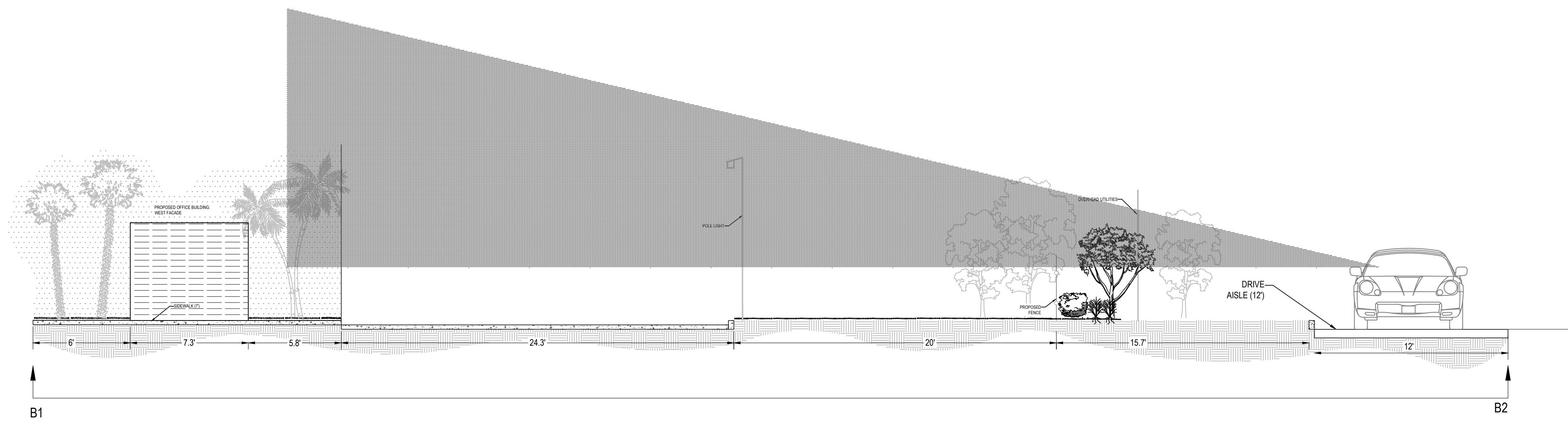


INEXHIBIT C: LANDSCAPE SECTIONS

1. LANDSCAPE SECTION A: SOUTH BUFFER 9 (TYPE B)
2. LANDSCAPE SECTION B: SOUTH BUFFER 8 (TYPE B)
3. LANDSCAPE SECTION C: EAST BUFFER 7 (TYPE C)



1 SECTION A: SOUTH BUFFER-9 (TYPE B)
SECTION NTS



2 SECTION B: SOUTH BUFFER-8 (TYPE B)
SECTION NTS

BOHLER
SITE CIVIL AND CONSULTING ENGINEERING
PROGRAM MANAGEMENT
LANDSCAPE ARCHITECTURE
SUSTAINABLE DESIGN
PERMITTING SERVICES
TRANSPORTATION SERVICES

REVISIONS

REV	DATE	COMMENT	DRAWN BY	CHECKED BY

811
Know what's below.
Call before you dig.
ALWAYS CALL 811
It's fast. It's free. It's the law.

SITE PLAN

PROJECT No.: FL23001000
DRAWN BY: RN
CHECKED BY: CL
DATE: 02/08/2023
CAD ID: LAND

PROPOSED SITE PLAN
FOR
CRITERION
PROPOSED DEVELOPMENT
NW 33RD STREET
POMPANO BEACH, FL 33069

BOHLER
1900 NW CORPORATE BOULEVARD
SUITE 101E
BOCA RATON, FLORIDA 33431
Phone: (561) 571-0280
Fax: (561) 571-0281
FLORIDA BUSINESS CERT. OF AUTH. No. 30780

THIS ITEM HAS BEEN DIGITALLY SIGNED AND SEALED BY BRETT M. WALDMAN, P.E., ON THE DATE ADJACENT TO THE SEAL. PRINTED COPIES OF THIS DOCUMENT ARE NOT CONSIDERED SIGNED AND SEALED AND THE SIGNATURE MUST BE VERIFIED ON ANY ELECTRONIC COPIES.

SHEET TITLE:
LANDSCAPE SECTIONS
SHEET NUMBER:
L-713
ORG. DATE - 02/08/2023