



Site Address	NW 4 COURT, POMPANO BEACH FL 33060	ID #	4842 35 19 0190
Property Owner	POMPANO BEACH COMMUNITY REDEVELOPMENT AGENCY	Millage	1512
Mailing Address	100 W ATLANTIC BLVD POMPANO BEACH FL 33060	Use	80
Abbr Legal Description	SHEWMAKE PARK 2-52 B LOT 10 BLK 2		

The just values displayed below were set in compliance with **Sec. 193.011**, Fla. Stat., and include a reduction for costs of sale and other adjustments required by **Sec. 193.011(8)**.

* 2021 values are considered "working values" and are subject to change.

Year	Land	Building / Improvement	Just / Market Value	Assessed / SOH Value	Tax
2021*	\$26,570		\$26,570	\$14,390	
2020	\$23,030		\$23,030	\$13,090	
2019	\$22,640		\$22,640	\$11,900	

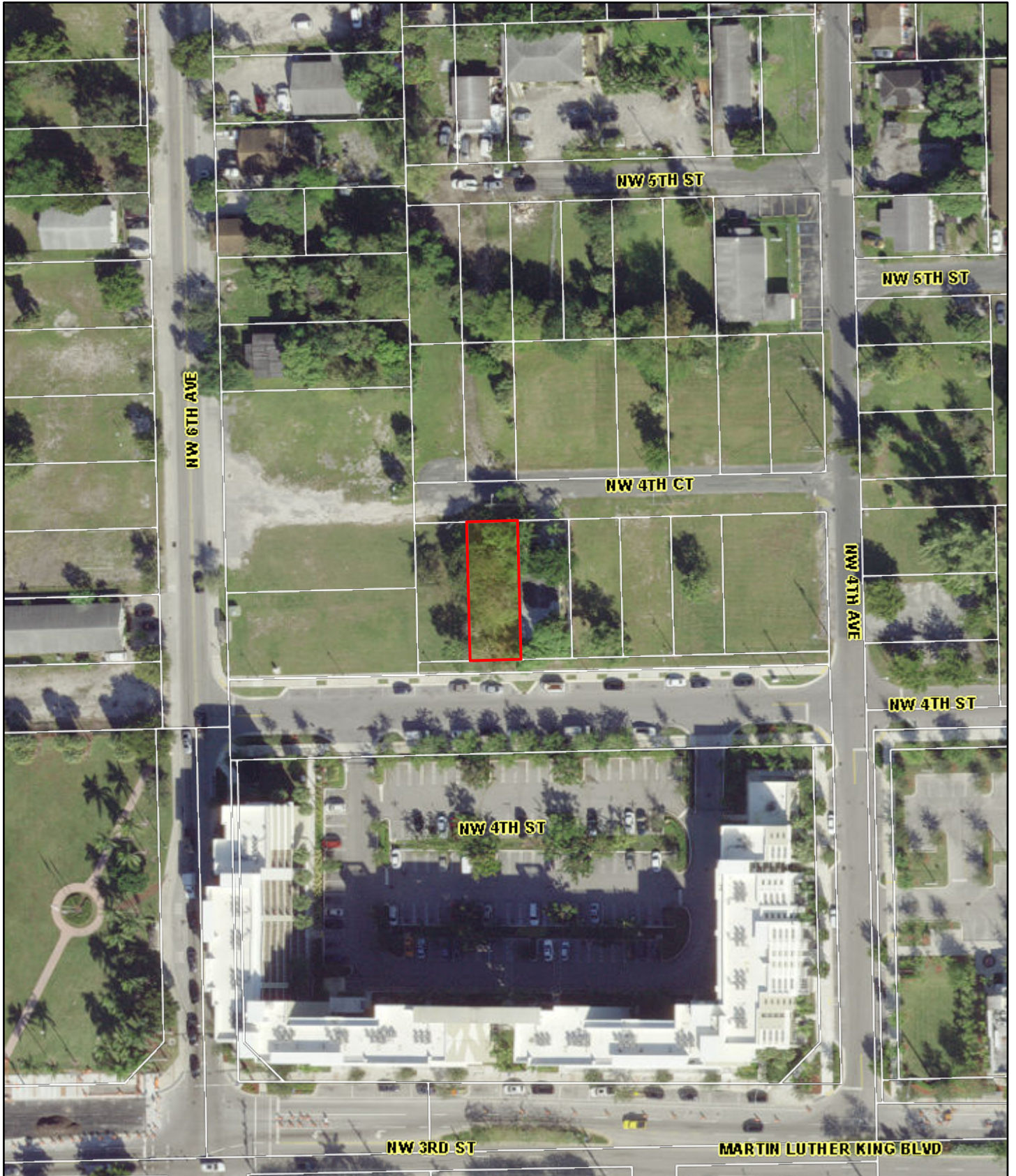
2021* Exemptions and Taxable Values by Taxing Authority				
	County	School Board	Municipal	Independent
Just Value	\$26,570	\$26,570	\$26,570	\$26,570
Portability	0	0	0	0
Assessed/SOH	\$14,390	\$26,570	\$14,390	\$14,390
Homestead	0	0	0	0
Add. Homestead	0	0	0	0
Wid/Vet/Dis	0	0	0	0
Senior	0	0	0	0
Exempt Type 15	\$14,390	\$26,570	\$14,390	\$14,390
Taxable	0	0	0	0

Sales History			
Date	Type	Price	Book/Page or CIN
5/20/2004	JQT		37535 / 850
4/23/2002	QC*	\$100	33261 / 270
12/4/2001	QC*		32450 / 43
12/20/2000	TXD		31946 / 1467

Land Calculations		
Price	Factor	Type
\$6.75	3,937	SF
Adj. Bldg. S.F.		

* Denotes Multi-Parcel Sale (See Deed)

Special Assessments								
Fire	Garb	Light	Drain	Impr	Safe	Storm	Clean	Misc
15			3A					
X			3A					
1								



August 23, 2021

