

STATE OF FLORIDA
DEPARTMENT OF TRANSPORTATION

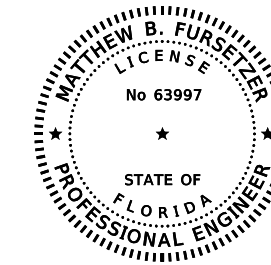
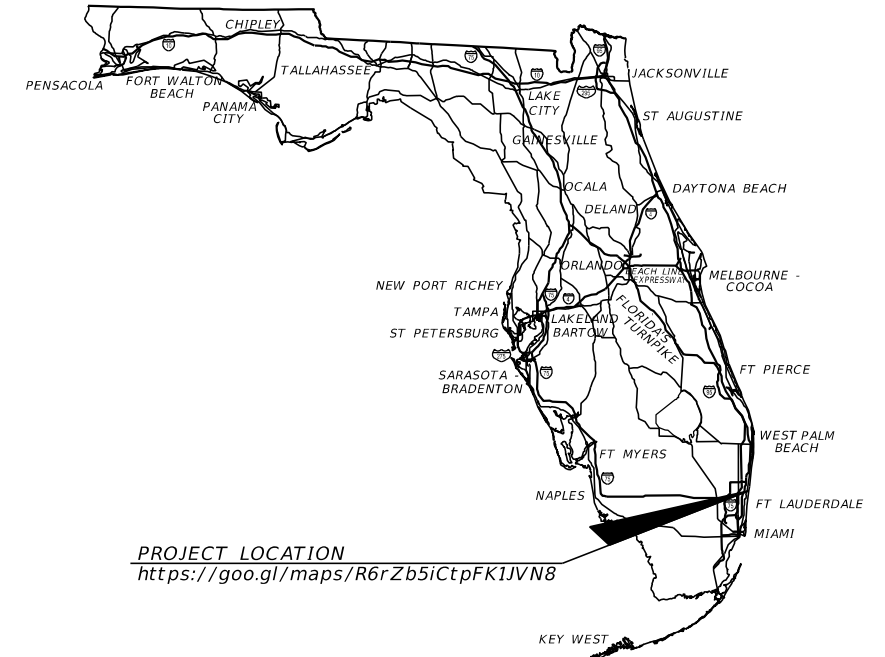
CONTRACT PLANS

FINANCIAL PROJECT ID N/A
BROWARD COUNTY (86050)
STATE ROAD NO. A1A
STREETSCAPE IMPROVEMENTS

LIGHTING PLANS

INDEX OF LIGHTING PLANS

SHEET NO.	SHEET DESCRIPTION
L-1	KEY SHEET
L-2	LEGEND
L-3 - L-4	POLE DATA
L-5 - L-16	LIGHTING PLAN
L-17	LIGHTING DETAILS



THIS DOCUMENT HAS BEEN DIGITALLY SIGNED AND SEALED BY:

PRINTED COPIES OF THIS DOCUMENT ARE NOT CONSIDERED SIGNED AND SEALED. THE SIGNATURE MUST BE VERIFIED ON THE ELECTRONIC DOCUMENTS.

LIGHTING PLANS
ENGINEER OF RECORD:

MATTHEW B. FURSETZER, P.E.
P.E. NO.: 63997
KIMLEY-HORN AND ASSOCIATES, INC.
1920 WEKIVA WAY, SUITE 200
WEST PALM BEACH, FLORIDA 33411
VENDOR NUMBER: F560885615-001
REGISTRY 696

CONSTRUCTION CONTRACT NO.	FISCAL YEAR	SHEET NO.
	21	L-1

Pole No.	Station	Offset	Side	CKT	Dist. or Arm	Luminaire Wattage	Mounting Height
1	95+00	28	LT	1	8'	150	30'
2	96+00	29	RT	3	8'	150	30'
3	96+75	28	LT	1	8'	150	30'
4	98+00	29	RT	3	8'	150	30'
5	99+00	28	LT	1	8'	150	30'
6	99+86	28	RT	3	8'	150	30'
7	100+13	55	LT	1	8'	150	30'
8	101+34	28	LT	1	8'	150	30'
9	102+17	28	RT	3	8'	150	30'
10	103+00	28	LT	1	8'	150	30'
11	103+97	28	RT	3	8'	150	30'
12	105+00	32	LT	1	8'	150	30'
13	106+49	28	RT	3	8'	150	30'
14	107+52	28	RT	3	8'	150	30'
15	107+98	28	LT	1	8'	150	30'
16	109+00	28	LT	1	8'	150	30'
17	110+00	28	RT	3	8'	150	30'
18	110+94	35	LT	1	8'	150	30'
19	112+03	28	RT	3	8'	150	30'
20	113+00	33	LT	1	8'	150	30'
21	114+38	26	RT	3	8'	150	30'
22	114+96	29	LT	1	8'	150	30'
23	115+97	27	RT	3	8'	150	30'
24	116+95	50	LT	1	8'	150	30'
25	118+01	3	RT	3	8'	150	30'
26	118+99	61	LT	1	8'	150	30'
27	120+00	2	LT	3	8'	150	30'
28	120+25	88	LT	1	8'	150	30'
29	121+01	59	LT	1	8'	150	30'
30	122+00	2	LT	3	8'	150	30'
31	123+00	58	LT	1	8'	150	30'
32	124+06	4	RT	3	8'	150	30'
33	124+69	3	RT	3	8'	150	30'
34	125+76	63	LT	2	8'	150	30'
35	127+01	55	LT	2	8'	150	30'
36	128+01	10	RT	4	8'	150	30'
37	128+74	50	LT	2	8'	150	30'
38	129+18	10	RT	4	8'	150	30'
39	129+92	46	LT	2	8'	150	30'
40	130+47	12	RT	4	8'	150	30'
41	131+11	42	LT	2	8'	150	30'
42	132+00	22	RT	4	8'	150	30'
43	133+16	35	LT	2	8'	150	30'
44	134+05	28	RT	4	8'	150	30'
45	135+13	30	LT	2	8'	150	30'
46	136+00	26	RT	4	8'	150	30'
47	136+84	26	RT	4	8'	150	30'
48	137+28	35	LT	2	8'	150	30'
49	138+47	25	RT	4	8'	150	30'
50	140+01	30	LT	2	8'	150	30'

REVISIONS				MATTHEW B. FURSETZER, P.E. P.E. LICENSE NUMBER 63997 KIMLEY-HORN AND ASSOCIATES, INC. 1920 WEKIVA WAY, SUITE 200 WEST PALM BEACH, FLORIDA 33411 REGISTRY 696	STATE OF FLORIDA DEPARTMENT OF TRANSPORTATION			POLE DATA	SHEET NO.
DATE	DESCRIPTION	DATE	DESCRIPTION		ROAD NO.	COUNTY	FINANCIAL PROJECT ID		
						SR A1A	BROWARD		N/A



BEGIN LIGHTING
STA. 95+00.00

PROPOSED POLE NO. 1
STA. 95+00, 28' LT

3 - #6 AWG THHN CONDUCTORS
CKT NO. 1

SUNSET LANE

94

95

96

SR A1A (OCEAN BLVD.)

MATCH LINE 96+40.00

PROPOSED POLE NO. 2
STA. 96+00, 29' RT

3 - #6 AWG THHN CONDUCTORS
CKT NO. 3

REVISIONS

DATE	DESCRIPTION	DATE	DESCRIPTION

MATTHEW B. FURSETZER, P.E.
P.E. LICENSE NUMBER 63997
KIMLEY-HORN AND ASSOCIATES, INC.
1920 WEKIVA WAY, SUITE 200
WEST PALM BEACH, FLORIDA 33411
REGISTRY 696

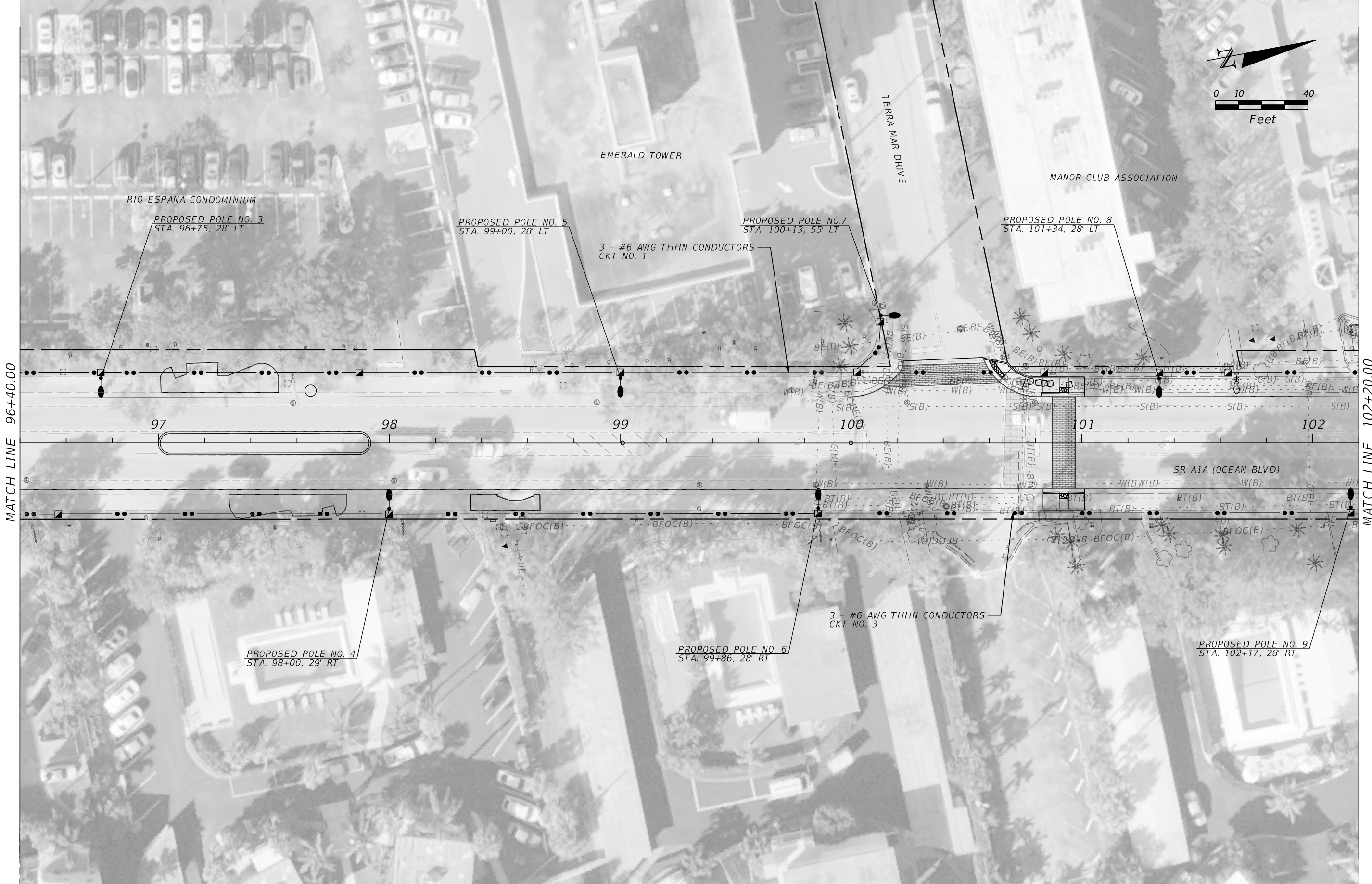
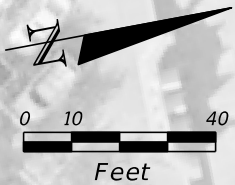
STATE OF FLORIDA DEPARTMENT OF TRANSPORTATION		
ROAD NO.	COUNTY	FINANCIAL PROJECT ID
SR A1A	BROWARD	N/A

LIGHTING PLAN

SHEET NO.
L-5

THE OFFICIAL RECORD OF THIS SHEET IS THE ELECTRONIC FILE DIGITALLY SIGNED AND SEALED UNDER RULE 61G15-23.004, F.A.C.

PHASE 1 SUBMITTAL



PHASE 1 SUBMITTAL

THE OFFICIAL RECORD OF THIS SHEET IS THE ELECTRONIC FILE DIGITALLY SIGNED AND SEALED UNDER RULE 61G15-23.004, F.A.C.

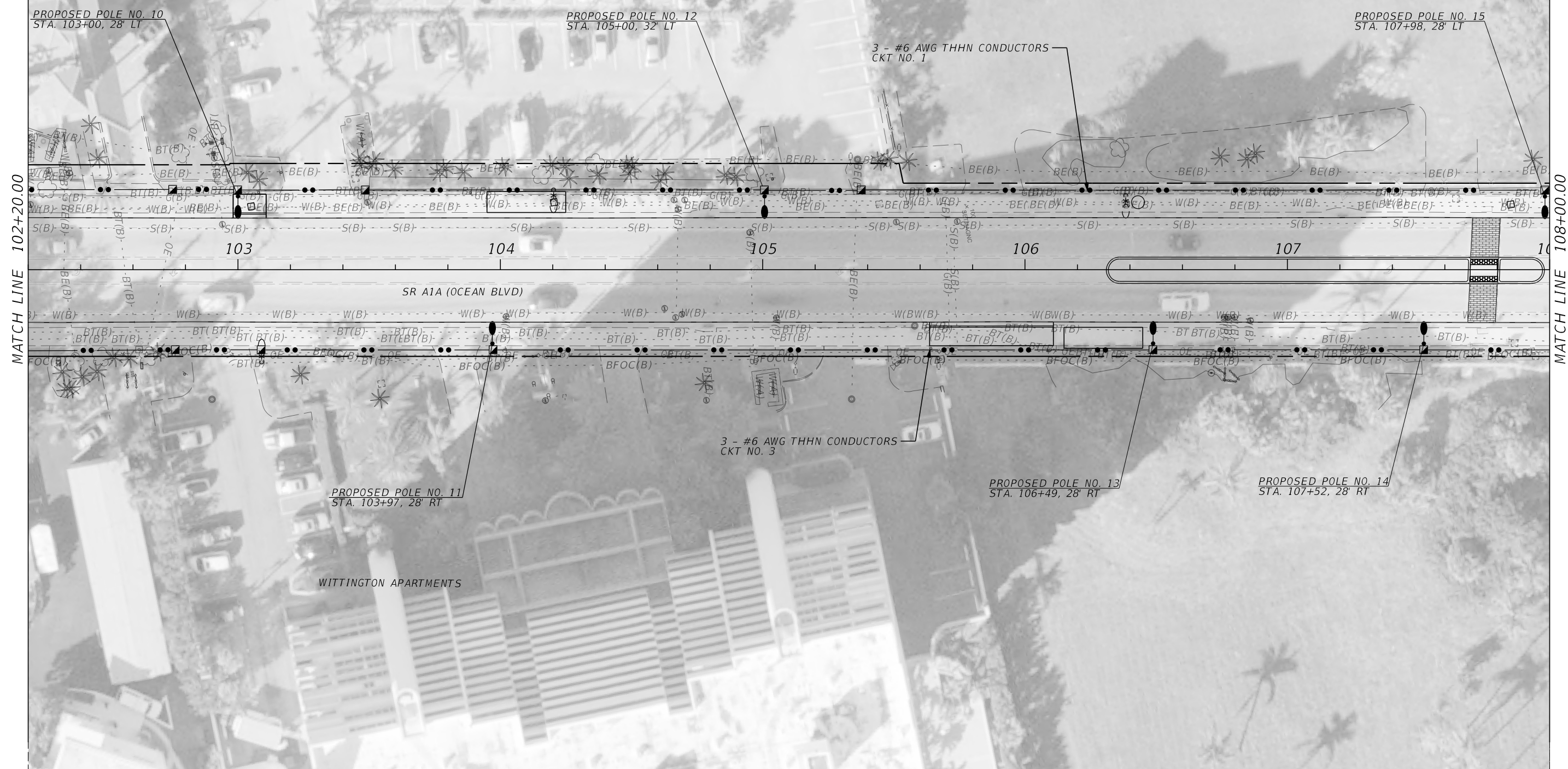
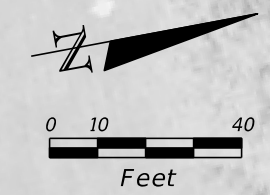
REVISIONS			
DATE	DESCRIPTION	DATE	DESCRIPTION

MATTHEW B. FURSETZER, P.E.
 P.E. LICENSE NUMBER 63997
 KIMLEY-HORN AND ASSOCIATES, INC.
 1920 WEKIVA WAY, SUITE 200
 WEST PALM BEACH, FLORIDA 33411
 REGISTRY 696

STATE OF FLORIDA DEPARTMENT OF TRANSPORTATION		
ROAD NO.	COUNTY	FINANCIAL PROJECT ID
SR A1A	BROWARD	N/A

LIGHTING PLAN

SHEET NO.
L-6



MATCH LINE 102+20.00

MATCH LINE 108+00.00

PHASE 1 SUBMITTAL

THE OFFICIAL RECORD OF THIS SHEET IS THE ELECTRONIC FILE DIGITALLY SIGNED AND SEALED UNDER RULE 61G15-23.004, F.A.C.

REVISIONS			
DATE	DESCRIPTION	DATE	DESCRIPTION

MATTHEW B. FURSETZER, P.E.
 P.E. LICENSE NUMBER 63997
 KIMLEY-HORN AND ASSOCIATES, INC.
 1920 WEKIVA WAY, SUITE 200
 WEST PALM BEACH, FLORIDA 33411
 REGISTRY 696

STATE OF FLORIDA DEPARTMENT OF TRANSPORTATION		
ROAD NO.	COUNTY	FINANCIAL PROJECT ID
SR A1A	BROWARD	N/A

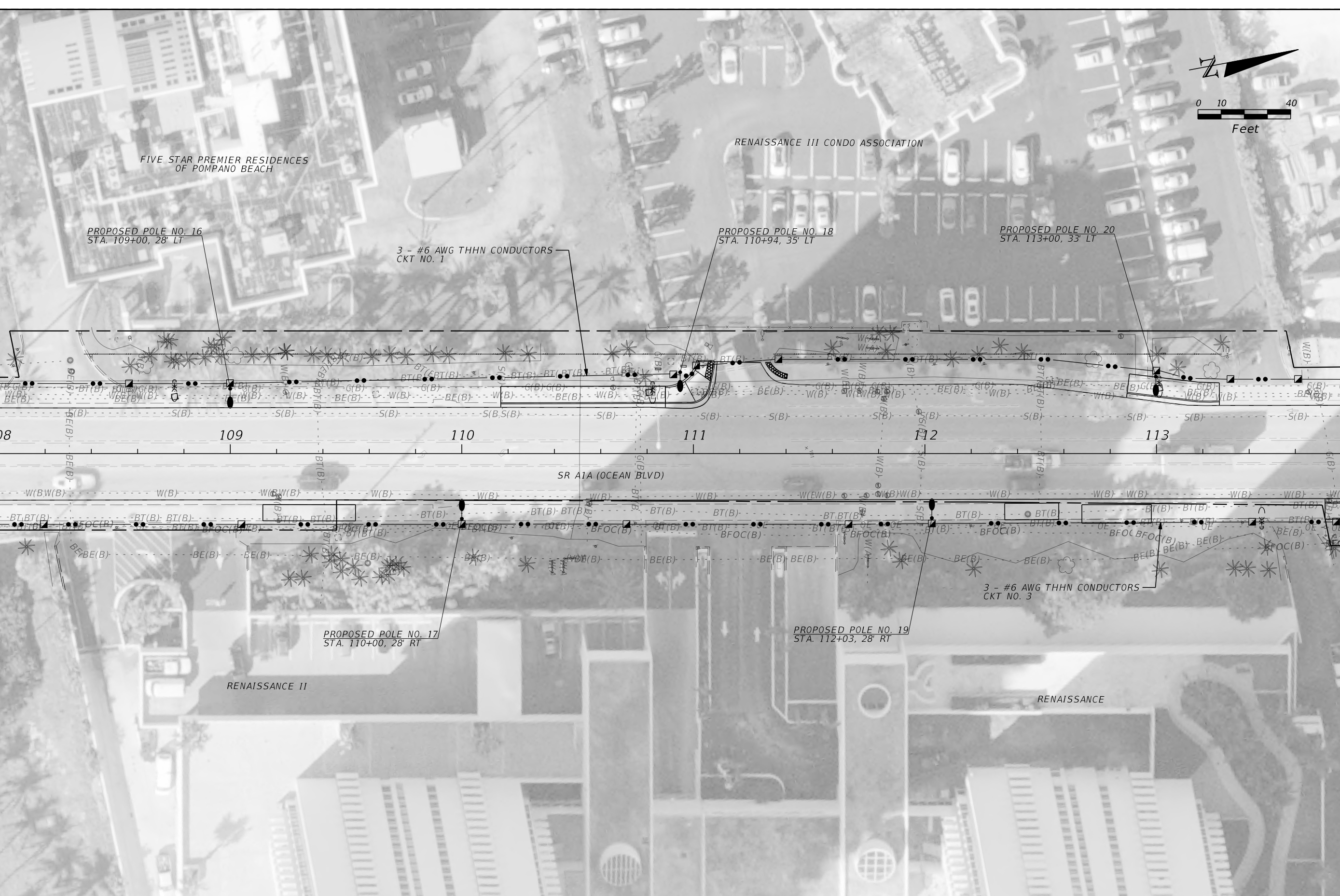
LIGHTING PLAN

SHEET NO.
L-7



MATCH LINE 108+00.00

MATCH LINE 113+80.00



FIVE STAR PREMIER RESIDENCES OF POMPANO BEACH

RENAISSANCE III CONDO ASSOCIATION

PROPOSED POLE NO. 16
STA. 109+00, 28' LT

3 - #6 AWG THHN CONDUCTORS
CKT NO. 1

PROPOSED POLE NO. 18
STA. 110+94, 35' LT

PROPOSED POLE NO. 20
STA. 113+00, 33' LT

SR A1A (OCEAN BLVD)

PROPOSED POLE NO. 17
STA. 110+00, 28' RT

RENAISSANCE II

PROPOSED POLE NO. 19
STA. 112+03, 28' RT

3 - #6 AWG THHN CONDUCTORS
CKT NO. 3

RENAISSANCE

REVISIONS				MATTHEW B. FURSETZER, P.E. P.E. LICENSE NUMBER 63997 KIMLEY-HORN AND ASSOCIATES, INC. 1920 WEKIVA WAY, SUITE 200 WEST PALM BEACH, FLORIDA 33411 REGISTRY 696	STATE OF FLORIDA DEPARTMENT OF TRANSPORTATION			LIGHTING PLAN	SHEET NO. L-8
DATE	DESCRIPTION	DATE	DESCRIPTION		ROAD NO.	COUNTY	FINANCIAL PROJECT ID		
					SR A1A	BROWARD	N/A		



WYNDHAM SANTA BARBARA

PROPOSED POLE NO. 22
STA. 114+96, 29' LT

PROPOSED POLE NO. 24
STA. 116+95, 50' LT

PROPOSED POLE NO. 26
STA. 118+99, 61' LT

3 - #6 AWG THHN CONDUCTORS
CKT NO. 1

MATCH LINE 113+80.00

MATCH LINE 119+60.00



PROPOSED POLE NO. 21
STA. 114+38, 26' RT

PROPOSED POLE NO. 23
STA. 115+97, 27' RT

3 - #6 AWG THHN CONDUCTORS
CKT NO. 3

PROPOSED POLE NO. 25
STA. 118+01, 3' RT

CLARIDGE

REVISIONS			
DATE	DESCRIPTION	DATE	DESCRIPTION

MATTHEW B. FURSETZER, P.E.
P.E. LICENSE NUMBER 63997
KIMLEY-HORN AND ASSOCIATES, INC.
1920 WEKIVA WAY, SUITE 200
WEST PALM BEACH, FLORIDA 33411
REGISTRY 696

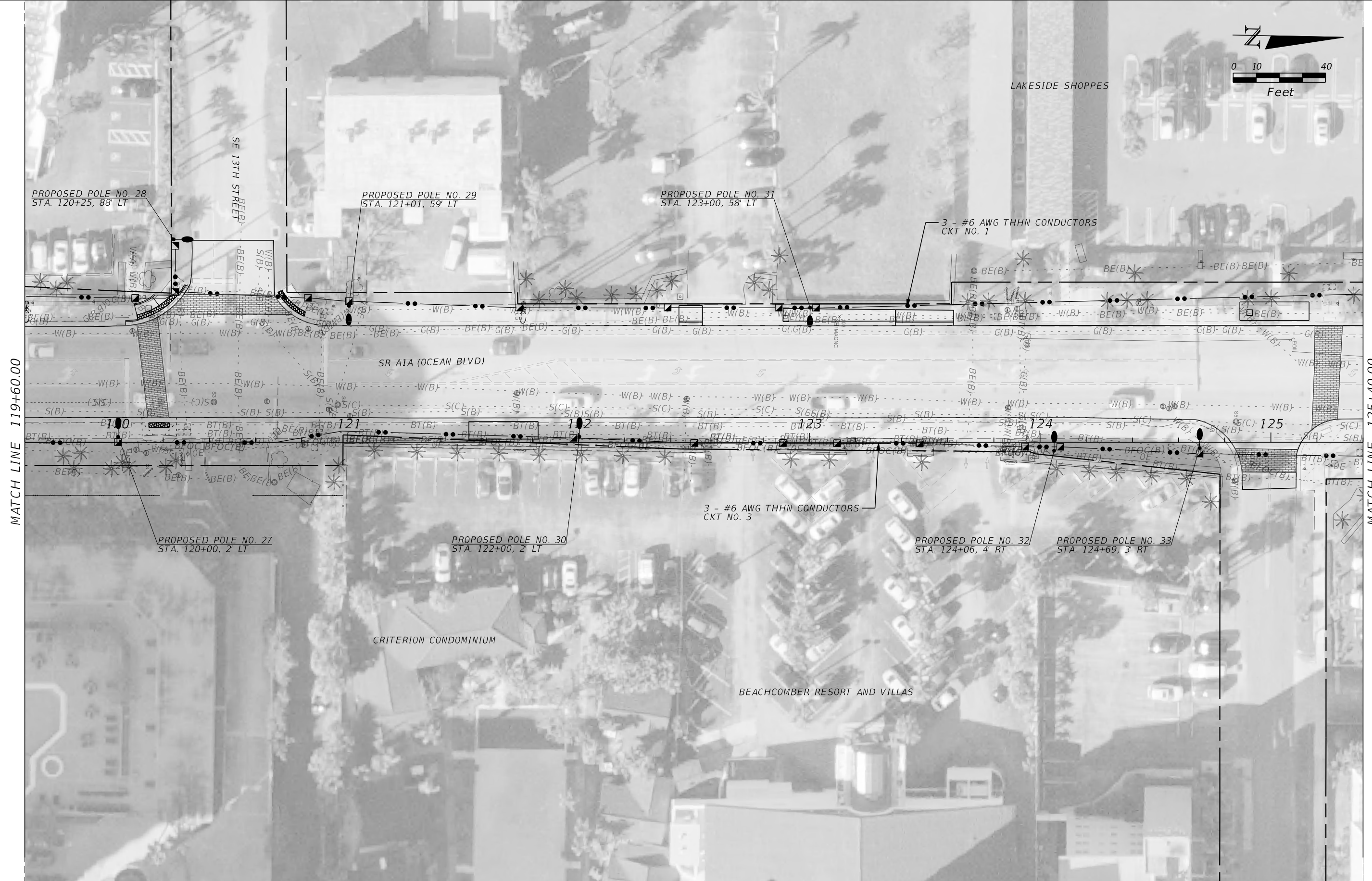
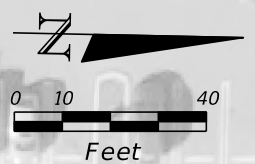
STATE OF FLORIDA DEPARTMENT OF TRANSPORTATION		
ROAD NO.	COUNTY	FINANCIAL PROJECT ID
SR A1A	BROWARD	N/A

LIGHTING PLAN

SHEET NO.
L-9

THE OFFICIAL RECORD OF THIS SHEET IS THE ELECTRONIC FILE DIGITALLY SIGNED AND SEALED UNDER RULE 61G15-23.004, F.A.C.

PHASE 1 SUBMITTAL



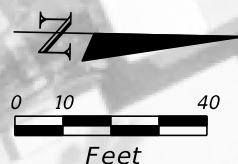
MATCH LINE 119+60.00

MATCH LINE 125+40.00

PHASE 1 SUBMITTAL

THE OFFICIAL RECORD OF THIS SHEET IS THE ELECTRONIC FILE DIGITALLY SIGNED AND SEALED UNDER RULE 61G15-23.004, F.A.C.

REVISIONS				MATTHEW B. FURSETZER, P.E. P.E. LICENSE NUMBER 63997 KIMLEY-HORN AND ASSOCIATES, INC. 1920 WEKIVA WAY, SUITE 200 WEST PALM BEACH, FLORIDA 33411 REGISTRY 696	STATE OF FLORIDA DEPARTMENT OF TRANSPORTATION			LIGHTING PLAN	SHEET NO.
DATE	DESCRIPTION	DATE	DESCRIPTION		ROAD NO.	COUNTY	FINANCIAL PROJECT ID		L-10
					SR A1A	BROWARD	N/A		



MATCH LINE 125+40.00

MATCH LINE 131+20.00

PHASE 1 SUBMITTAL

THE OFFICIAL RECORD OF THIS SHEET IS THE ELECTRONIC FILE DIGITALLY SIGNED AND SEALED UNDER RULE 61G15-23.004, F.A.C.

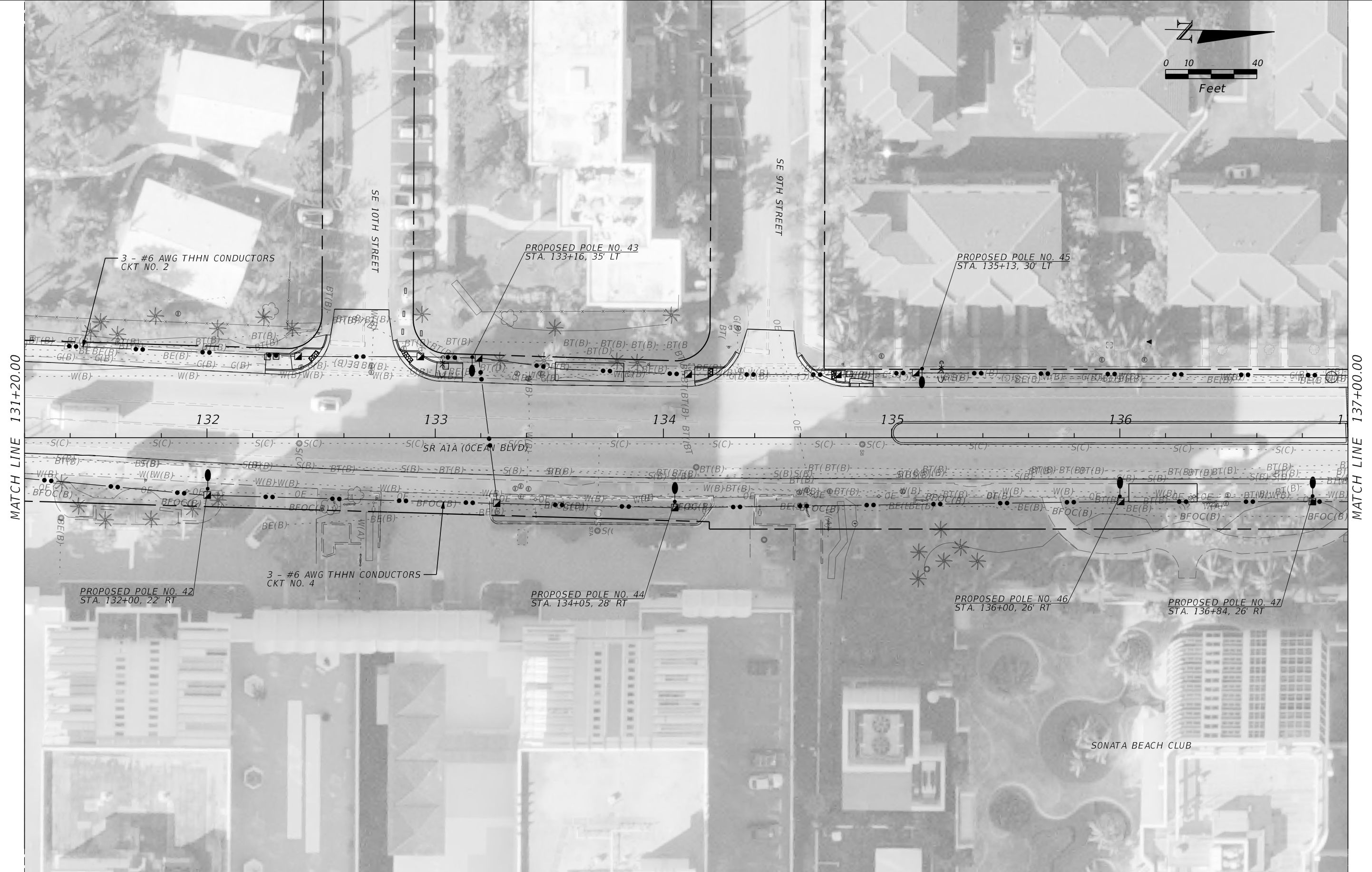
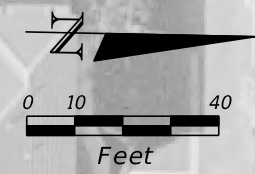
REVISIONS			
DATE	DESCRIPTION	DATE	DESCRIPTION

MATTHEW B. FURSETZER, P.E.
P.E. LICENSE NUMBER 63997
KIMLEY-HORN AND ASSOCIATES, INC.
1920 WEKIVA WAY, SUITE 200
WEST PALM BEACH, FLORIDA 33411
REGISTRY 696

STATE OF FLORIDA DEPARTMENT OF TRANSPORTATION		
ROAD NO.	COUNTY	FINANCIAL PROJECT ID
SR A1A	BROWARD	N/A

LIGHTING PLAN

SHEET NO.
L-11



PHASE 1 SUBMITTAL

THE OFFICIAL RECORD OF THIS SHEET IS THE ELECTRONIC FILE DIGITALLY SIGNED AND SEALED UNDER RULE 61G15-23.004, F.A.C.

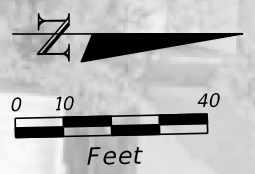
REVISIONS			
DATE	DESCRIPTION	DATE	DESCRIPTION

MATTHEW B. FURSETZER, P.E.
 P.E. LICENSE NUMBER 63997
 KIMLEY-HORN AND ASSOCIATES, INC.
 1920 WEKIVA WAY, SUITE 200
 WEST PALM BEACH, FLORIDA 33411
 REGISTRY 696

STATE OF FLORIDA DEPARTMENT OF TRANSPORTATION		
ROAD NO.	COUNTY	FINANCIAL PROJECT ID
SR A1A	BROWARD	N/A

LIGHTING PLAN

SHEET NO.
L-12



MATCH LINE 137+00.00

MATCH LINE 142+80.00

PHASE 1 SUBMITTAL

THE OFFICIAL RECORD OF THIS SHEET IS THE ELECTRONIC FILE DIGITALLY SIGNED AND SEALED UNDER RULE 61G15-23.004, F.A.C.

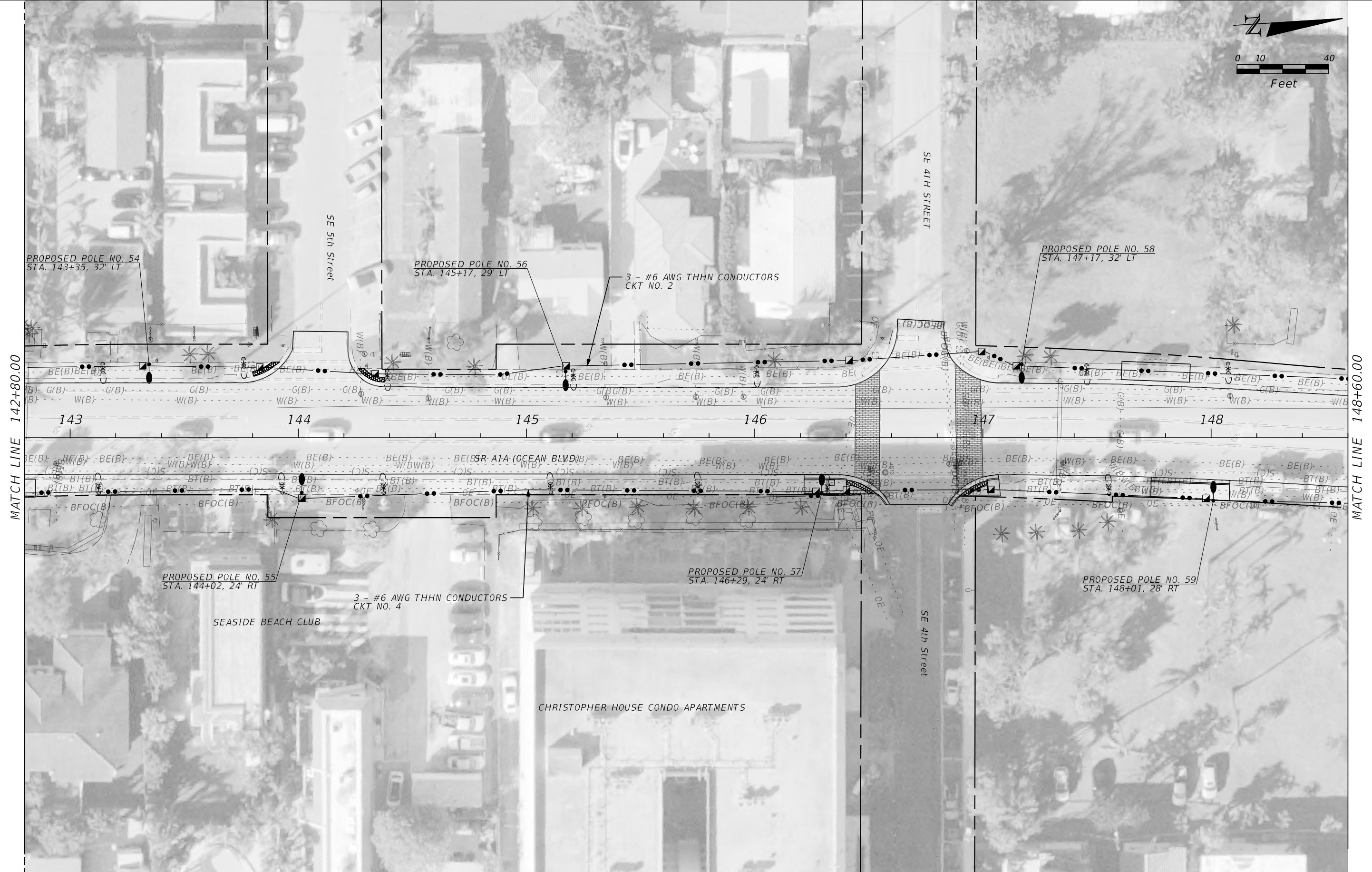
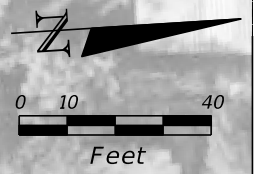
REVISIONS			
DATE	DESCRIPTION	DATE	DESCRIPTION

MATTHEW B. FURSETZER, P.E.
 P.E. LICENSE NUMBER 63997
 KIMLEY-HORN AND ASSOCIATES, INC.
 1920 WEKIVA WAY, SUITE 200
 WEST PALM BEACH, FLORIDA 33411
 REGISTRY 696

STATE OF FLORIDA DEPARTMENT OF TRANSPORTATION		
ROAD NO.	COUNTY	FINANCIAL PROJECT ID
SR A1A	BROWARD	N/A

LIGHTING PLAN

SHEET NO.
L-13



MATCH LINE 142+80.00

MATCH LINE 148+60.00

PHASE 1 SUBMITTAL

THE OFFICIAL RECORD OF THIS SHEET IS THE ELECTRONIC FILE DIGITALLY SIGNED AND SEALED UNDER RULE 61G15-23.004, F.A.C.

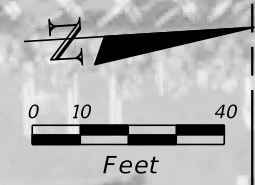
REVISIONS			
DATE	DESCRIPTION	DATE	DESCRIPTION

MATTHEW B. FURSETZER, P.E.
 P.E. LICENSE NUMBER 63997
 KIMLEY-HORN AND ASSOCIATES, INC.
 1920 WEKIVA WAY, SUITE 200
 WEST PALM BEACH, FLORIDA 33411
 REGISTRY 696

STATE OF FLORIDA DEPARTMENT OF TRANSPORTATION		
ROAD NO.	COUNTY	FINANCIAL PROJECT ID
SR A1A	BROWARD	N/A

LIGHTING PLAN

SHEET NO.
L-14



MATCH LINE 148+60.00

MATCH LINE 154+40.00



PHASE 1 SUBMITTAL

THE OFFICIAL RECORD OF THIS SHEET IS THE ELECTRONIC FILE DIGITALLY SIGNED AND SEALED UNDER RULE 61G15-23.004, F.A.C.

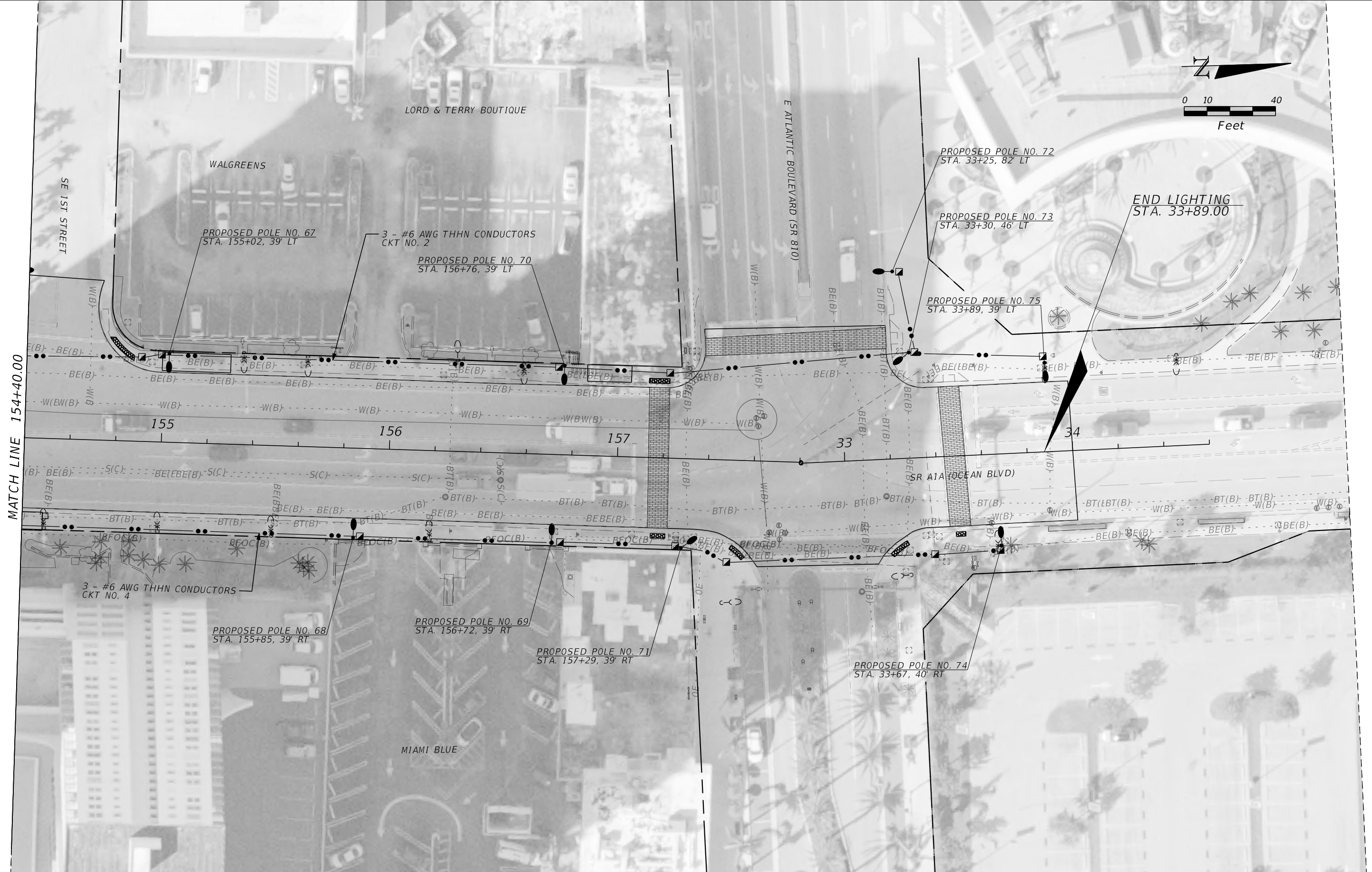
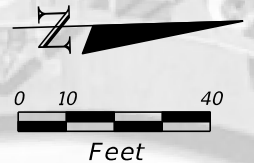
REVISIONS			
DATE	DESCRIPTION	DATE	DESCRIPTION

MATTHEW B. FURSETZER, P.E.
 P.E. LICENSE NUMBER 63997
 KIMLEY-HORN AND ASSOCIATES, INC.
 1920 WEKIVA WAY, SUITE 200
 WEST PALM BEACH, FLORIDA 33411
 REGISTRY 696

STATE OF FLORIDA DEPARTMENT OF TRANSPORTATION		
ROAD NO.	COUNTY	FINANCIAL PROJECT ID
SR A1A	BROWARD	N/A

LIGHTING PLAN

SHEET NO.
L-15



MATCH LINE 154+40.00

PHASE 1 SUBMITTAL

THE OFFICIAL RECORD OF THIS SHEET IS THE ELECTRONIC FILE DIGITALLY SIGNED AND SEALED UNDER RULE 61G15-23.004, F.A.C.

REVISIONS			
DATE	DESCRIPTION	DATE	DESCRIPTION

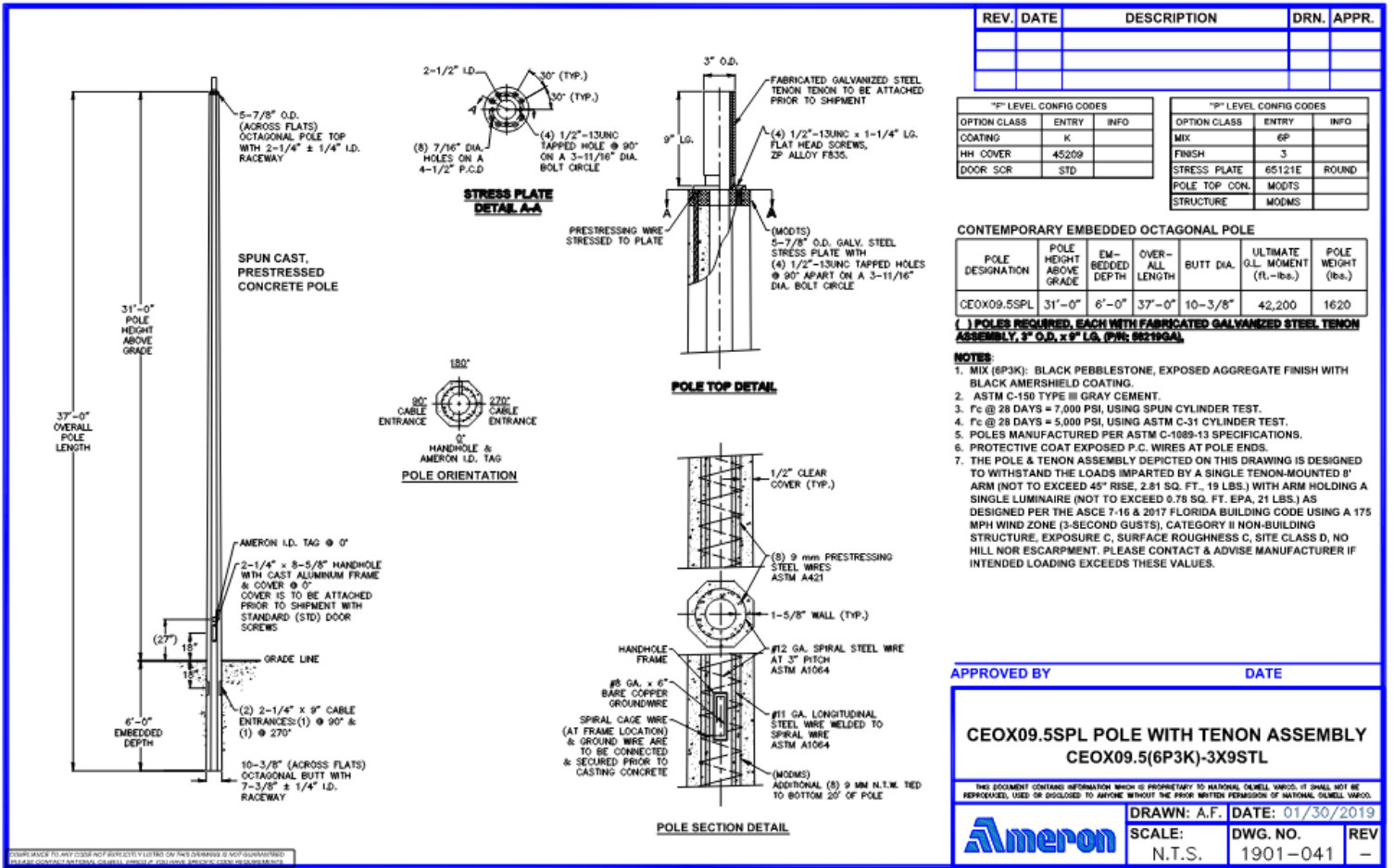
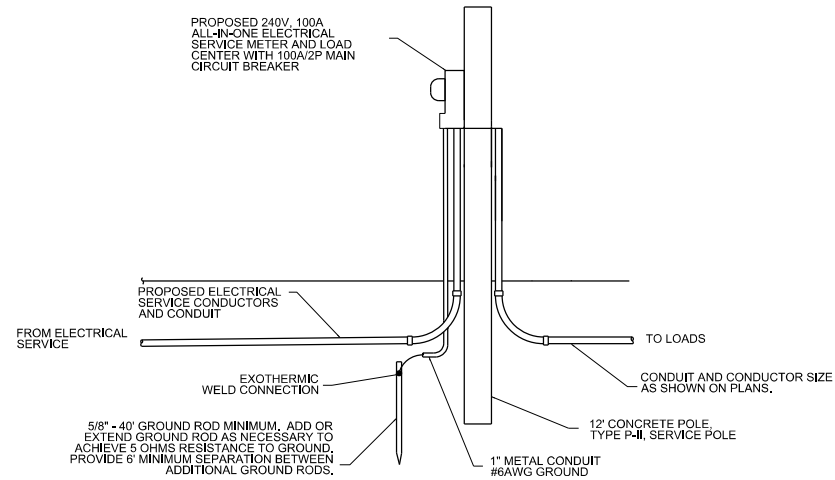
MATTHEW B. FURSETZER, P.E.
 P.E. LICENSE NUMBER 63997
 KIMLEY-HORN AND ASSOCIATES, INC.
 1920 WEKIVA WAY, SUITE 200
 WEST PALM BEACH, FLORIDA 33411
 REGISTRY 696

STATE OF FLORIDA DEPARTMENT OF TRANSPORTATION		
ROAD NO.	COUNTY	FINANCIAL PROJECT ID
SR A1A	BROWARD	N/A

LIGHTING PLAN

SHEET NO.
L-16

RISER DIAGRAM



REV.	DATE	DESCRIPTION	DRN.	APPR.

"I" LEVEL CONFIG CODES			"P" LEVEL CONFIG CODES		
OPTION CLASS	ENTRY	INFO	OPTION CLASS	ENTRY	INFO
COATING	K		MIX	6P	
HH COVER	45209		FINISH	3	
DOOR SCR	STD		STRESS PLATE	65121E	ROUND
			POLE TOP CON.	MODTS	
			STRUCTURE	MODMS	

CONTEMPORARY EMBEDDED OCTAGONAL POLE						
POLE DESIGNATION	POLE HEIGHT ABOVE GRADE	EM-BEDDED DEPTH	OVER-ALL LENGTH	BUTT DIA.	ULTIMATE G.L. MOMENT (ft.-lbs.)	POLE WEIGHT (lbs.)
CE0X09.5SPL	31'-0"	6'-0"	37'-0"	10-3/8"	42,200	1620

1) POLES REQUIRED, EACH WITH FABRICATED GALVANIZED STEEL TENON ASSEMBLY, 3" O.D. x 9" LG. (P/N: 902195AL)

- NOTES:
- MIX (6P3K): BLACK PEBBLESTONE, EXPOSED AGGREGATE FINISH WITH BLACK AMERSHIELD COATING.
 - ASTM C-150 TYPE III GRAY CEMENT.
 - Fc @ 28 DAYS = 7,000 PSI, USING SPIN CYLINDER TEST.
 - Fc @ 28 DAYS = 5,000 PSI, USING ASTM C-31 CYLINDER TEST.
 - POLES MANUFACTURED PER ASTM C-1089-13 SPECIFICATIONS.
 - PROTECTIVE COAT EXPOSED P.C. WIRES AT POLE ENDS.
 - THE POLE & TENON ASSEMBLY DEPICTED ON THIS DRAWING IS DESIGNED TO WITHSTAND THE LOADS IMPARTED BY A SINGLE TENON-MOUNTED 1' ARM (NOT TO EXCEED 45" RISE, 2.81 SQ. FT., 19 LBS.) WITH ARM HOLDING A SINGLE LUMINAIRE (NOT TO EXCEED 0.78 SQ. FT. EPA, 21 LBS.) AS DESIGNED PER THE ASCE 7-16 & 2017 FLORIDA BUILDING CODE USING A 175 MPH WIND ZONE (3-SECOND GUSTS), CATEGORY II NON-BUILDING STRUCTURE, EXPOSURE C, SURFACE ROUGHNESS C, SITE CLASS D, NO HILL NOR ESCARPMENT. PLEASE CONTACT & ADVISE MANUFACTURER IF INTENDED LOADING EXCEEDS THESE VALUES.

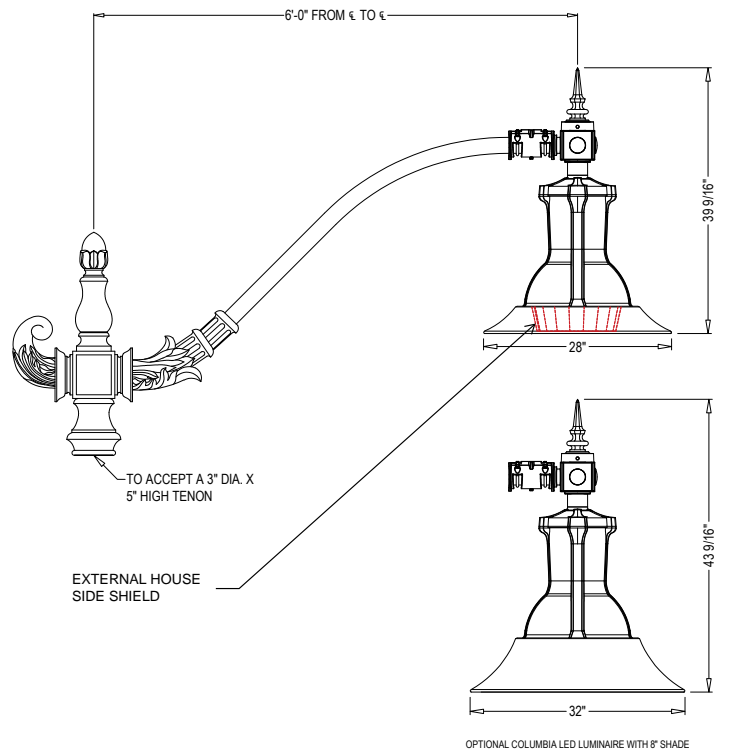
APPROVED BY _____ DATE _____

CE0X09.5SPL POLE WITH TENON ASSEMBLY
CE0X09.5(6P3K)-3X9STL

THIS DOCUMENT CONTAINS INFORMATION WHICH IS PROPRIETARY TO NATIONAL OILWELL VARCO. IT SHALL NOT BE REPRODUCED, USED OR DISCLOSED TO ANYONE WITHOUT THE PRIOR WRITTEN PERMISSION OF NATIONAL OILWELL VARCO.

Ameron	DRAWN: A.F.	DATE: 01/30/2019
SCALE: N.T.S.	DWG. NO. 1901-041	REV -

This drawing is property of Spring City Elect. Mfg. and is issued to the recipient with the understanding that it shall not be copied, duplicated, passed on to unauthorized parties, nor used for any purpose other than that for which it is specifically furnished except with Spring City's written permission.



- LUMINAIRE SPECIFICATIONS**
- STYLE: COLUMBIA LED LUMINAIRE WITH 4" SHADE
 HEIGHT: 39 9/16"
 WIDTH: 17 1/8" DIAMETER
 MATERIAL: CAST ALUMINUM ALLOY ANSI 356 PER A.S.T.M. B26-95
 GLOBE: CLEAR TEMERED GLASS
 FINISH: POWDER COAT - PLEASE ADVISE FINISH
 LAMPING: 150 WATT LED
 VOLTAGE: ELECTRICALLY WIRE AT 120-277 VOLTS
 COLOR TEMP: AMBER
 OPTICAL SYSTEM: TYPE III OR IV DISTRIBUTION
 SURGE: 10kV
 OPTIONS: 4" - 180 DEGREE HOUSE SIDE SHIELD
- CATALOG NO.: ALMCLU-M_LE150-EVX-2F2-AMB-CR3/CR4-GPLO-HS-LACL8-CU
- CROSS ARM SPECIFICATIONS**
- STYLE: NORTHAMPTON
 HEIGHT: 3'-10 3/4"
 WIDTH: 6" FROM C OF POST TO C OF LUMINAIRE
 MATERIAL: SCHEDULE 40 ALUMINUM PIPE WITH CAST ALUMINUM ORNAMENTATION
 FINISH: POWDER COAT - PLEASE ADVISE FINISH
 TENON: 2 3/8" DIA. X 6 1/4" LONG (TO ACCEPT LUMINAIRE)
- CATALOG NO.: AARNRT-1S-72-42-TN2-38-6-25-CU

Spring City Electrical Mfg. Co.
 HALL AND MAIN STREETS, P.O. BOX 19, SPRING CITY, PA, 19475
 PHONE: (610) 948-4000 - FAX: (610) 948-5577 - WWW.SPRINGCITY.COM

DESCRIPTION	THE TURTLE FRIENDLY COLUMBIA LED LUMINAIRE AND NORTHAMPTON CROSS ARM		
OPPORTUNITY	A1A POMPANO BEACH, FL		
SCALE	DRAWN BY	DATE	DRAWING NO.
N.T.S.	D.A.K.	04-21-2021	81059995-CG

REVISIONS				MATTHEW B. FURSETZER, P.E. P.E. LICENSE NUMBER 63997 KIMLEY-HORN AND ASSOCIATES, INC. 1920 WEKIVA WAY, SUITE 200 WEST PALM BEACH, FLORIDA 33411 REGISTRY 696	STATE OF FLORIDA DEPARTMENT OF TRANSPORTATION			SHEET NO. L-17
DATE	DESCRIPTION	DATE	DESCRIPTION		ROAD NO.	COUNTY	FINANCIAL PROJECT ID	
					SR A1A	BROWARD	N/A	

THE OFFICIAL RECORD OF THIS SHEET IS THE ELECTRONIC FILE DIGITALLY SIGNED AND SEALED UNDER RULE 61G15-23.004, F.A.C.