

FIRE STATION 24

A PORTION OF THE NORTHEAST ONE-QUARTER (N.E. 1/4) OF SECTION 36, TOWNSHIP 48 SOUTH, RANGE 42 EAST, CITY OF POMPANO BEACH, BROWARD COUNTY, FLORIDA

PLAT BOOK PAGE

SHEET 1 OF 2

BROWARD COUNTY PLANNING COUNCIL

THIS IS TO CERTIFY THAT THE BROWARD COUNTY PLANNING COUNCIL APPROVED THIS PLAT SUBJECT TO ITS COMPLIANCE WITH DEDICATION OF RIGHTS OF WAY THIS DAY OF , A.D., 201.

BY: DATE: CHAIRPERSON

THIS PLAT COMPLIES WITH THE APPROVAL OF THE BROWARD COUNTY PLANNING COUNCIL ON THE ABOVE DATE AND IS HEREBY APPROVED AND ACCEPTED FOR RECORD THIS DAY OF , A.D., 201.

BY: DATE: EXECUTIVE DIRECTOR OR DESIGNEE

BROWARD COUNTY FINANCE AND ADMINISTRATIVE SERVICES DEPARTMENT, COUNTY RECORDS DIVISION-MINUTES SECTION

THIS IS TO CERTIFY THAT THIS PLAT COMPLIES WITH THE PROVISIONS OF CHAPTER 177, FLORIDA STATUTES, AND WAS ACCEPTED FOR RECORD BY THE BOARD OF COUNTY COMMISSIONERS OF BROWARD COUNTY, FLORIDA, THIS DAY OF ,201.

ATTEST: BERTHA HENRY COUNTY ADMINISTRATOR DEPUTY

MAYOR-COUNTY COMMISSION

BROWARD COUNTY FINANCE AND ADMINISTRATIVE SERVICES DEPARTMENT, COUNTY RECORDS DIVISION-RECORDING SECTION

THIS INSTRUMENT WAS FILED FOR RECORD THIS DAY OF A.D., 201 AND RECORDED IN PLAT BOOK PAGE , RECORD VERIFIED.

ATTEST: BERTHA HENRY COUNTY ADMINISTRATOR DEPUTY

BROWARD COUNTY HIGHWAY CONSTRUCTION AND ENGINEERING DIVISION

THIS PLAT HAS BEEN REVIEWED FOR CONFORMITY WITH CHAPTER 177, PART 1, FLORIDA STATUTES AND IS APPROVED AND ACCEPTED FOR RECORDATION.

BY: RICHARD TORNESE DIRECTOR FLORIDA PROFESSIONAL ENGINEER, REGISTRATION NO. 40263 BY: ROBERT P. LEGG, JR. FLORIDA PROFESSIONAL SURVEYOR AND MAPPER REGISTRATION NO. 4030

DATE: DATE:

BROWARD COUNTY ENVIRONMENTAL PROTECTION AND GROWTH MANAGEMENT DEPARTMENT

THIS PLAT IS HEREBY APPROVED AND ACCEPTED FOR RECORD.

DIRECTOR OR DESIGNEE DATE

SURVEYOR'S CERTIFICATE

I HEREBY CERTIFY THAT THE ATTACHED PLAT IS A TRUE AND CORRECT REPRESENTATION OF THE LANDS RECENTLY SURVEYED, SUBDIVIDED AND PLATTED UNDER MY RESPONSIBLE DIRECTION AND SUPERVISION, THAT THE SURVEY DATA SHOWN CONFORMS TO THE APPLICABLE REQUIREMENTS OF CHAPTER 177, PART 1, FLORIDA STATUTES, AND WITH THE APPLICABLE SECTIONS OF CHAPTER 5J-17, FLORIDA ADMINISTRATIVE CODE. THE PERMANENT REFERENCE MONUMENTS (P.R.M.'S) WERE SET ON xxxxxx xxx, 2016. THE BENCH MARKS SHOWN ARE REFERENCED TO THE NATIONAL GEODETIC VERTICAL DATUM OF 1929 IN CONFORMITY WITH STANDARDS ADOPTED BY THE NATIONAL OCEAN SURVEY FOR THIRD ORDER CONTROL STANDARDS.

KEITH & ASSOCIATES, INC. FLORIDA DEPARTMENT OF BUSINESS AND PROFESSIONAL REGULATION CERTIFICATE OF AUTHORIZATION NUMBER LB 6860.

DATE: FOR THE FIRM BY:

A.M. LAZOWICK PROFESSIONAL SURVEYOR AND MAPPER REGISTRATION NO. 4105 STATE OF FLORIDA

DESCRIPTION:

A PARCEL OF LAND LYING IN THE NORTHEAST ONE-QUARTER (N.E. 1/4) OF SECTION 36, TOWNSHIP 48 SOUTH, RANGE 42 EAST, AND BEING MORE PARTICULARLY DESCRIBED AS FOLLOWS:

BEGIN AT THE SOUTHWEST CORNER OF PARCEL "G", POMPANO BEACH AIR PARK AND RECREATION FACILITIES PLAT, PLAT BOOK 149, PAGE 20, OF THE PUBLIC RECORDS OF BROWARD COUNTY, FLORIDA. SAID POINT ALSO A POINT ON A CURVE CONCAVE TO THE SOUTHEAST (A RADIAL LINE THRU SAID POINT BEARS NORTH 12°41'01" WEST); THENCE SOUTHWESTERLY ALONG THE NORTH RIGHT-OF-WAY LINE OF N.E. 10TH STREET AS SHOWN ON POMPANO BEACH AIR PARK AND RECREATION FACILITIES PLAT, PLAT BOOK 149, PAGE 20, OF THE PUBLIC RECORDS OF BROWARD COUNTY, FLORIDA AND ALONG THE ARC OF SAID CURVE, HAVING A RADIUS OF 467.50 FEET, A CENTRAL ANGLE OF 29°13'00", AN ARC DISTANCE OF 238.39 FEET; THENCE NORTH 43°52'04" WEST DEPARTING SAID NORTH LINE, 152.80 FEET TO A POINT OF CURVATURE OF A CURVE CONCAVE TO THE SOUTHEAST; THENCE NORTHWESTERLY, NORTHERLY AND NORTHEASTERLY ALONG THE ARC OF SAID CURVE HAVING A RADIUS 75.00 FEET, A CENTRAL ANGLE OF 106°58'18", AN ARC DISTANCE OF 140.03 FEET; THENCE NORTH 63°06'14" EAST, 58.50 FEET TO A POINT OF CURVATURE WITH A CURVE CONCAVE TO THE SOUTHWEST; THENCE NORTHEASTERLY, EASTERLY AND SOUTHEASTERLY ALONG THE ARC OF SAID CURVE, HAVING A RADIUS OF 125.00 FEET, A CENTRAL ANGLE OF 78°55'06", AN ARC DISTANCE OF 172.17 FEET TO A POINT ON THE WEST BOUNDARY LINE OF SAID PARCEL "G"; THENCE SOUTH 37°58'40" EAST, ALONG SAID WEST LINE 143.11 FEET TO THE POINT OF BEGINNING.

SAID LANDS SITUATE, LYING AND BEING IN THE CITY OF POMPANO BEACH, BROWARD COUNTY, FLORIDA AND CONTAINING 53,594 SQUARE FEET OR 1.23 ACRES MORE OR LESS,

ACKNOWLEDGEMENT:

STATE OF FLORIDA } SS BEFORE ME PERSONALLY APPEARED COUNTY OF BROWARD } DENNIS BEACH, WHO IS PERSONALLY KNOWN TO ME, AND WHO EXECUTED THE FOREGOING INSTRUMENT AS CITY MANAGER OF THE CITY OF POMPANO BEACH, A MUNICIPAL CORPORATION, AND SEVERALLY ACKNOWLEDGED TO AND BEFORE ME THAT HE EXECUTED SUCH INSTRUMENT AS SUCH CITY MANAGER OF SAID CORPORATION, AND THAT THE SEAL AFFIXED TO THE FOREGOING INSTRUMENT IS THE CORPORATE SEAL OF SAID CORPORATION AND THAT IT IS AFFIXED TO SAID INSTRUMENT BY DUE AND REGULAR AUTHORITY, AND THAT SAID INSTRUMENT IS THE FREE ACT AND DEED OF SAID CORPORATION.

WITNESS MY HAND AND OFFICIAL SEAL THIS DAY OF 201.

MY COMMISSION EXPIRES:

NOTARY PUBLIC:

PRINT NAME:

DEDICATION:

STATE OF FLORIDA } SS KNOW ALL MEN BY THESE PRESENTS THAT COUNTY OF BROWARD } THE CITY OF POMPANO BEACH, A MUNICIPAL CORPORATION, AS OWNERS OF PARCEL "A", AS SHOWN HEREON, BEING IN SECTION 36, TOWNSHIP 48 SOUTH, RANGE 43 EAST, BROWARD COUNTY, FLORIDA, SHOWN HEREON AS FIRE STATION 24, DO HEREBY DEDICATE THE FOLLOWING:

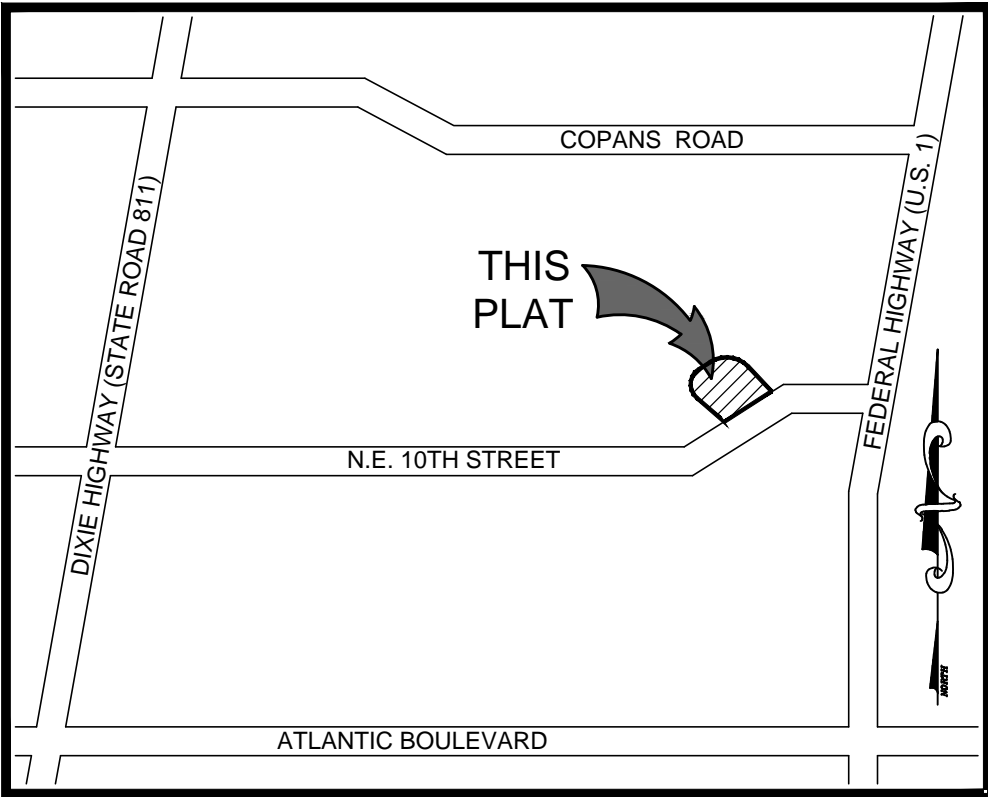
NONE

IN WITNESS WHEREOF: WE HERETO SET OUR HANDS AND AFFIX OUR CORPORATE SEALS THIS DAY OF , 201.

CITY OF POMPANO BEACH, A MUNICIPAL CORPORATION

WITNESS: PRINT NAME:

WITNESS: BY: PRINT NAME DENNIS BEACH



LOCATION SKETCH

NOT TO SCALE

CITY OF POMPANO BEACH APPROVALS:

CITY COMMISSION:

THIS IS TO CERTIFY THAT THIS PLAT HAS BEEN APPROVED AND ACCEPTED FOR RECORDING BY THE CITY OF POMPANO BEACH, FLORIDA, AND BY RESOLUTION NO. THIS DAY OF ,A.D., 201.

NO BUILDING PERMITS SHALL BE ISSUED FOR THE CONSTRUCTION, EXPANSION, AND/OR CONVERSION OF A BUILDING WITHIN THIS PLAT UNTIL SUCH TIME AS THE DEVELOPER PROVIDES THIS MUNICIPALITY WITH WRITTEN CONFIRMATION FROM BROWARD COUNTY THAT ALL APPLICABLE CONCURRENCY/IMPACT FEES HAVE BEEN PAID OR ARE NOT DUE.

IN WITNESS WHEREOF SAID CITY COMMISSION

ATTEST: CITY CLERK ASCELETA HAMMOND

BY: CITY MAYOR LAMAR FISHER

PLANNING AND ZONING BOARD:

THIS IS TO CERTIFY THAT THE PLANNING AND ZONING BOARD OF POMPANO BEACH, FLORIDA HAS ACCEPTED AND APPROVED THIS PLAT THIS DAY OF A.D., 201.

BY: PLANNING AND ZONING BOARD CHAIR FRED STACER

ENGINEERING:

THIS PLAT IS HEREBY APPROVED FOR RECORD THIS DAY OF A.D., 201.

BY: CITY ENGINEER JOHN SFIROPOULOS

CITY COMMISSION	CITY ENGINEER	COUNTY COMMISSION	COUNTY ENGINEER	COUNTY SURVEYOR	SURVEYOR	PREPARED BY:
						<div>KEITH &amp; ASSOCIATES, INC. consulting engineers</div> <div>301 EAST ATLANTIC BOULEVARD POMPANO BEACH, FLORIDA 33060-6643 (954) 788-3400 FAX(954) 788-3500 EMAIL: MAIL@KEITH-ASSOCIATES.COM LB NO. 6860</div>

003-MP-16