

LEGEND:

B.C.R.	BROWARD COUNTY RECORDS	BASKETBALL HOOP
BM	BENCHMARK	BARBECUE GRILL
CB	CATCH BASIN	WOOD POST
CLF	CHAIN LINK FENCE	TELEPHONE HAND HOLE
CMP	CORRUGATED METAL PIPE	BENCHMARK
CONC.	CONCRETE	CATCH BASIN
EHH	ELECTRIC HAND HOLE	DECORATIVE LIGHT POLE
ELEV	ELEVATION	ELECTRICAL BOX
FOUND	FOUNDATION	ELECTRIC HAND HOLE
IRV	IRRIGATION CONTROL VALVE	ELECTRIC METER
INV.	INVERT	FLAG POLE
IRC	IRON ROD WITH CAP	GUY ANCHOR
LB	FLORIDA LICENSED BUSINESS NUMBER	HANDICAP PARKING
(MEAS)	MEASURED	IRRIGATION CONTROL VALVE
NAVD	NORTH AMERICAN VERTICAL DATUM OF 1988	TRAFFIC DIRECTION ARROWS
O.R.B.	OFFICIAL RECORDS BOOK	METAL LIGHT POLE
PLAT BOOK	PLAT BOOK	METAL POST
P.B.	PAGE	SHRUB
PVC	POLYVINYL CHLORIDE PIPE	DENOTES PALM TREE (SEE TREE TABLE)
R/W	RIGHT-OF-WAY	IRRIGATION PUMP HOUSE (SEE TREE TABLE)
TYP.	TYPICAL	DENOTES PINE TREE (SEE TREE TABLE)
		TREE LABEL
		CHAIN LINK FENCE
		WOOD FENCE
		ALUMINUM FENCE
		OVERHEAD LINES
		TOP OF BANK
		PROTECTIVE NETTING
		CONCRETE
		STUBBLED CONCRETE

LEGAL DESCRIPTION:
 THE WEST ONE-HALF (W 1/2) OF THE WEST ONE-HALF (W 1/2) OF THE SOUTH-EAST ONE-QUARTER (SE 1/4) OF THE NORTHWEST ONE-QUARTER (NW 1/4) AND:

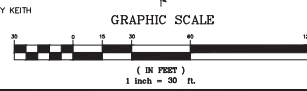
THE SOUTHWEST ONE-QUARTER (SW 1/4) OF THE NORTHEAST ONE-QUARTER (NE 1/4) OF THE NORTHWEST ONE-QUARTER (NW 1/4) SAID LANDS LYING AND BEING SECTION 18, TOWNSHIP 48 SOUTH, RANGE 43 EAST, BROWARD COUNTY, FLORIDA,
 CONTAINING 20.4 ACRES MORE OR LESS.

CERTIFICATION:
 I HEREBY CERTIFY THAT THE ATTACHED BOUNDARY AND TOPOGRAPHIC SURVEY OF THE HERON DESCRIBED PROPERTY IS DEPICTED TO THE BEST OF MY KNOWLEDGE AND BELIEF AND THE INFORMATION AS SURVEYED UNDER MY DIRECTION ON JUNE 13, 2019 MEETS THE STANDARDS OF PRACTICE FOR S-17 OF THE FLORIDA ADMINISTRATIVE CODE, PURSUANT TO SECTION 472.027, FLORIDA STATUTES, SUBJECT TO THE QUALIFICATIONS NOTED HEREON.

KEITH & ASSOCIATES, INC.
 CONSULTING ENGINEERS
 LEE POWERS
 PROFESSIONAL SURVEYOR AND MAPPER
 REGISTRATION NO. 6805
 STATE OF FLORIDA

SURVEY NOTES:

- THE LAND DESCRIPTION SHOWN HEREON WAS PROVIDED BY THE CLIENT.
- NOT VALID WITHOUT THE ORIGINAL SIGNATURE AND SEAL OF A FLORIDA LICENSED SURVEYOR AND MAPPER.
- LANDS SHOWN HEREON WERE NOT ABSTRACTED FOR RIGHTS OF WAY, EASEMENTS, OWNERSHIPS OR OTHER INSTRUMENTS OF RECORDS.
- OTHER THAN AS SHOWN, THERE IS NO EVIDENCE THAT UNDERGROUND ENCROACHMENTS EXIST. HOWEVER A SUBSURFACE INVESTIGATION WAS NOT PERFORMED TO DETERMINE IF UNDERGROUND ENCROACHMENTS EXIST.
- THIS SURVEY DOES NOT IDENTIFY THE LIMITS OR EXTENTS OF POTENTIAL JURISDICTIONAL BOUNDARIES.
- BEARINGS SHOWN HEREON ARE BASED ON AN ASSUMED BEARING OF SOUTH 07°00'1" EAST ALONG THE EAST LINE OF POMPADO BEACH HIGHLANDS 4TH SECTION, ACCORDING TO THE PLAT THEREOF, AS RECORDED IN PLAT BOOK 40, ON PAGE 35 OF THE PUBLIC RECORDS OF BROWARD COUNTY, FLORIDA.
- IT IS A VIOLATION OF THE STANDARDS OF PRACTICE RULE 5J-17 OF THE FLORIDA ADMINISTRATIVE CODE TO ALTER THIS SURVEY WITHOUT THE EXPRESS PRIOR WRITTEN CONSENT OF THE SURVEYOR. ADDITIONS AND/OR DELETIONS MADE TO THE FACE OF THIS SURVEY WILL MAKE THIS SURVEY INVALID.
- THE INTENDED DISPLAY SCALE OF THIS SURVEY IS 1" = 30' OR SMALLER.
- THE EXPECTED VERTICAL ACCURACY OF THE INFORMATION SHOWN HEREON IS ±0.02' FOR HARD SURFACE ELEVATIONS AND 0.1' FOR SOFT SURFACE ELEVATIONS. THE EXPECTED HORIZONTAL LOCATION ACCURACY IS ±/- 0.1'.
- HORIZONTAL FEATURE LOCATION IS TO THE CENTER OF THE SYMBOL WHICH MAY HAVE BEEN ALTERED FOR CLARITY. ALL MAPPED FEATURES SHOWN HEREON WERE OBTAINED BY KEITH & ASSOCIATES, INC. FOR THE PURPOSE OF THIS SURVEY. DISTANCES SHOWN HEREON ARE IN U.S. FEET.
- THE HORIZONTAL DATUM FOR THIS SURVEY IS THE NORTH AMERICAN DATUM OF 1983 WITH THE NATIONAL SPATIAL REFERENCE SYSTEM 2011 ADJUSTMENT APPLIED (83/NSRS2011), TRANSVERSE MERCATOR, FLORIDA EAST ZONE.
- THE OWNERSHIP OF FENCES AND PERMITTER WALLS SHOWN HEREON ARE NOT KNOWN AND THUS ARE NOT LISTED AS ENCROACHMENTS.
- ACCORDING TO THE NATIONAL FLOOD INSURANCE PROGRAM, FLOOD INSURANCE RATE MAP (FIRM) MAP NO. 12010C0101N, EFFECTIVE DATE 8-19-2014, THIS PROPERTY LIES IN ZONE X 0.2% ANNUAL CHANCE FLOOD HAZARD, BASE FLOOD ELEVATION (NONE).
- ELEVATIONS SHOWN HEREON ARE BASED ON THE NORTH AMERICAN VERTICAL DATUM OF 1988 (NAVD 1988). SAID ELEVATIONS ARE BASED ON (NGS) NATIONAL GEODETIC SURVEY BENCHMARKS 011 & 012. BENCHMARK 011 IS A BRASS DISC IN CONCRETE MONUMENT, STAMPED 012 2011, LOCATED 60.0 FEET SOUTH OF THE INTERSECTION OF NORTH FEDERAL HIGHWAY (U.S. HIGHWAY 1) AND NORTHEAST 54TH STREET, 52.0 FEET EAST OF THE CENTERLINE OF NORTH FEDERAL HIGHWAY (U.S. HIGHWAY 1), 12.8 FEET SOUTHWEST OF A CROSS WALK SIGNAL, 6.0 FEET WEST OF THE WEST EDGE OF THE SIDEWALK, 4.5 FEET NORTHEAST OF A STREET SIGN, 4.0 FEET SOUTH OF THE SOUTH EDGE OF THE CROSSWALK AND 1.3 FEET WEST OF A CARBONITE WITNESS POST. ELEVATION=7.53'. BENCHMARK 012 IS A BRASS DISC IN CONCRETE MONUMENT, STAMPED 012 2011, LOCATED 250.0 FT (76.2 M) NORTH OF THE INTERSECTION OF NORTH FEDERAL HIGHWAY (U.S. HIGHWAY 1) AND NORTHEAST 44TH STREET, 200.0 FEET NORTH OF THE SOUTH END OF THE BELL NOSE MEDIAN, 85.4 FEET SOUTH OF A 12-INCH PALM TREE, 19.2 FEET SOUTHWEST OF A DRAINAGE MANHOLE AND 1.0 FOOT WEST OF A CARBONITE WITNESS POST. ELEVATION=9.83'
- ALL MAPPED FEATURES AND ELEVATIONS SHOWN HEREON WERE OBTAINED BY KEITH & ASSOCIATES FOR THE PURPOSE OF THIS SURVEY.



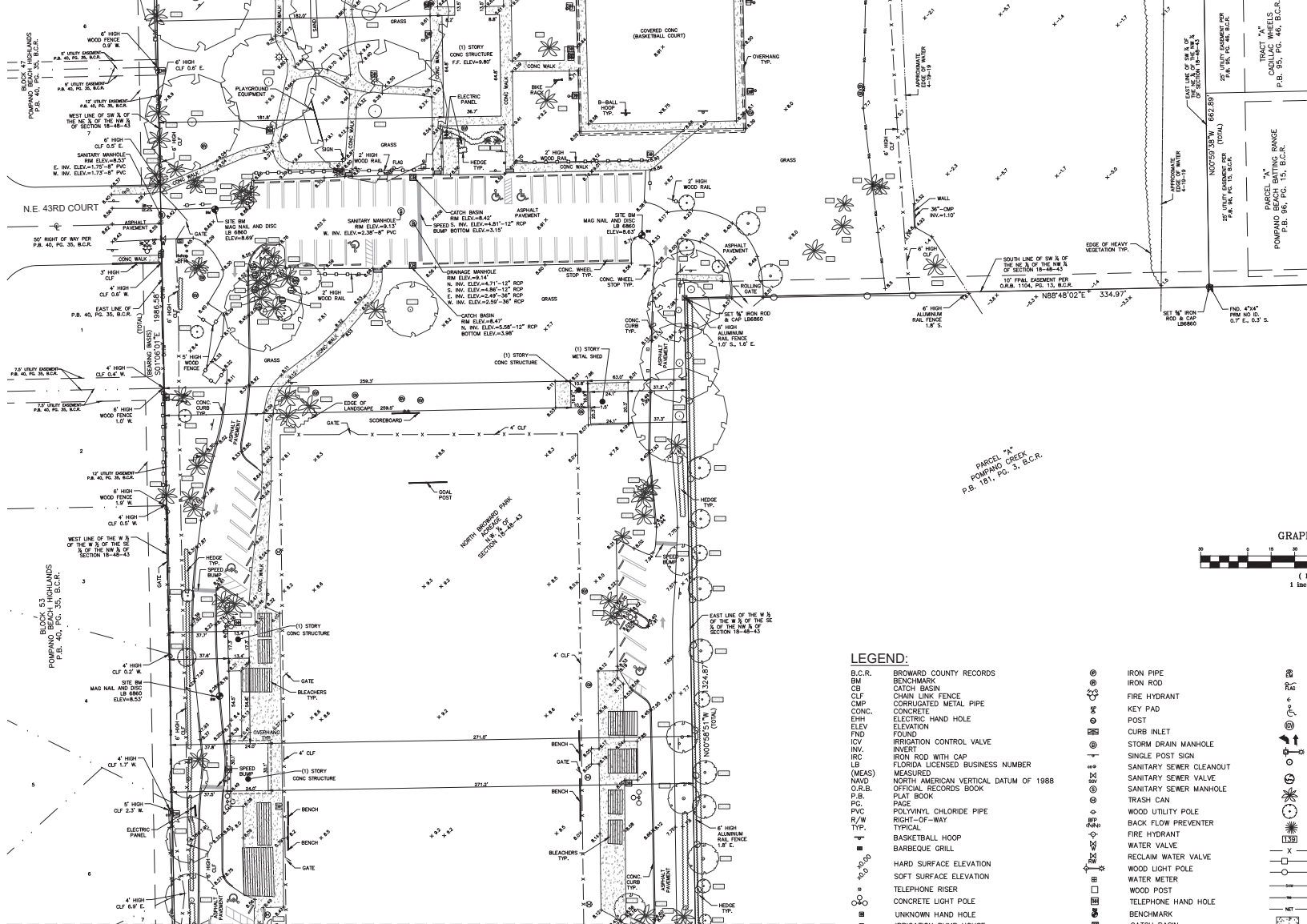
DATE	6/13/19	SCALE	1" = 30'	FIELD BOOK	884	S.M.		L.P.	
REVISION BY		DRAWN BY		CHECKED BY					

KEITH
 301 EAST ATLANTIC BOULEVARD
 POMPADO BEACH, FLORIDA 33060-6643
 (954) 788-3400 FAX (954) 788-3300
 EMAIL: mail@keithem.com

BOUNDARY AND TOPOGRAPHIC SURVEY
NORTH POMPADO PARK
 A PORTION OF SECTION 18, TOWNSHIP 48 SOUTH, RANGE 43 EAST
 CITY OF POMPADO BEACH, BROWARD COUNTY, FLORIDA
 SHEET 1 OF 4
 PROJECT NUMBER
 10785.00

MATCH LINE "A"
SEE SHEET 1

MATCH LINE "A"
SEE SHEET 1

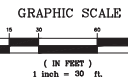


MATCH LINE "B"
SEE SHEET 3

MATCH LINE "B"
SEE SHEET 3

LEGEND:

- | | | | | | |
|---------|---------------------------------------|---|---------------------------------------|---|------------------------------------|
| B.C.R. | BROWARD COUNTY RECORDS | ⊙ | IRON PIPE | ⊙ | ELECTRIC METER |
| BM | BENCHMARK | ⊙ | IRON ROD | ⊙ | FLAG POLE |
| CB | CATCH BASIN | ⊙ | FIRE HYDRANT | ⊙ | SINGLE POST SIGN |
| CLF | CHAIN LINK FENCE | ⊙ | KEY PAD | ⊙ | GUY ANCHOR |
| CMP | CORRUGATED METAL PIPE | ⊙ | POST | ⊙ | HANDICAP PARKING |
| CONC. | CONCRETE | ⊙ | CURB INLET | ⊙ | IRRIGATION CONTROL VALVE |
| EHP | ELECTRIC HAND HOLE | ⊙ | STORM DRAIN MANHOLE | ⊙ | TRAFFIC DIRECTION ARROWS |
| ELEV | ELEVATION | ⊙ | IRON ROD WITH CAP | ⊙ | METAL LIGHT POLE |
| FND | FOUND | ⊙ | FLORIDA LICENSED BUSINESS NUMBER | ⊙ | METAL POST |
| ICV | IRRIGATION CONTROL VALVE | ⊙ | MEASURED | ⊙ | SHRUB |
| INVERT | INVERT | ⊙ | NORTH AMERICAN VERTICAL DATUM OF 1988 | ⊙ | DENOTES PALM TREE (SEE TREE TABLE) |
| INV. | IRON ROD WITH CAP | ⊙ | O.R.B. | ⊙ | DENOTES TREE (SEE TREE TABLE) |
| IRC | FLORIDA LICENSED BUSINESS NUMBER | ⊙ | P.B. | ⊙ | DENOTES PINE TREE (SEE TREE TABLE) |
| LB | MEASURED | ⊙ | P.C. | ⊙ | TREE LABEL |
| NAVD | NORTH AMERICAN VERTICAL DATUM OF 1988 | ⊙ | PACE | ⊙ | CHAIN LINK FENCE |
| (MEAS.) | MEASURED | ⊙ | P.V.C. | ⊙ | WOOD FENCE |
| O.R.B. | OFFICIAL RECORDS BOOK | ⊙ | P.V.C. CHLORIDE PIPE | ⊙ | WOOD LIGHT POLE |
| P.B. | PLAT BOOK | ⊙ | RIGHT-OF-WAY | ⊙ | WATER METER |
| P.C. | PLAT BOOK | ⊙ | BASKETBALL HOOP | ⊙ | WOOD POST |
| P.V.C. | POLYVINYL CHLORIDE PIPE | ⊙ | BARBEQUE GRILL | ⊙ | TELEPHONE HAND HOLE |
| R/W | RIGHT-OF-WAY | ⊙ | HARD SURFACE ELEVATION | ⊙ | BENCHMARK |
| TYP. | TYPICAL | ⊙ | SOFT SURFACE ELEVATION | ⊙ | CATCH BASIN |
| ⊙ | BASKETBALL HOOP | ⊙ | TELEPHONE RISER | ⊙ | DECORATIVE LIGHT POLE |
| ⊙ | BARBEQUE GRILL | ⊙ | CONCRETE LIGHT POLE | ⊙ | ELECTRICAL BOX |
| ⊙ | HARD SURFACE ELEVATION | ⊙ | UNKNOWN HAND HOLE | ⊙ | ELECTRIC HAND HOLE |
| ⊙ | SOFT SURFACE ELEVATION | ⊙ | IRRIGATION PUMP HOUSE | ⊙ | |
| ⊙ | TELEPHONE RISER | ⊙ | BOLLARD | ⊙ | |
| ⊙ | CONCRETE LIGHT POLE | ⊙ | DOUBLE POST SIGN | ⊙ | |
| ⊙ | UNKNOWN HAND HOLE | ⊙ | CONCRETE LIGHT POLE | ⊙ | |
| ⊙ | IRRIGATION PUMP HOUSE | ⊙ | | ⊙ | |
| ⊙ | BOLLARD | ⊙ | | ⊙ | |
| ⊙ | DOUBLE POST SIGN | ⊙ | | ⊙ | |
| ⊙ | CONCRETE LIGHT POLE | ⊙ | | ⊙ | |



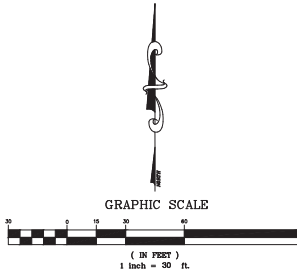
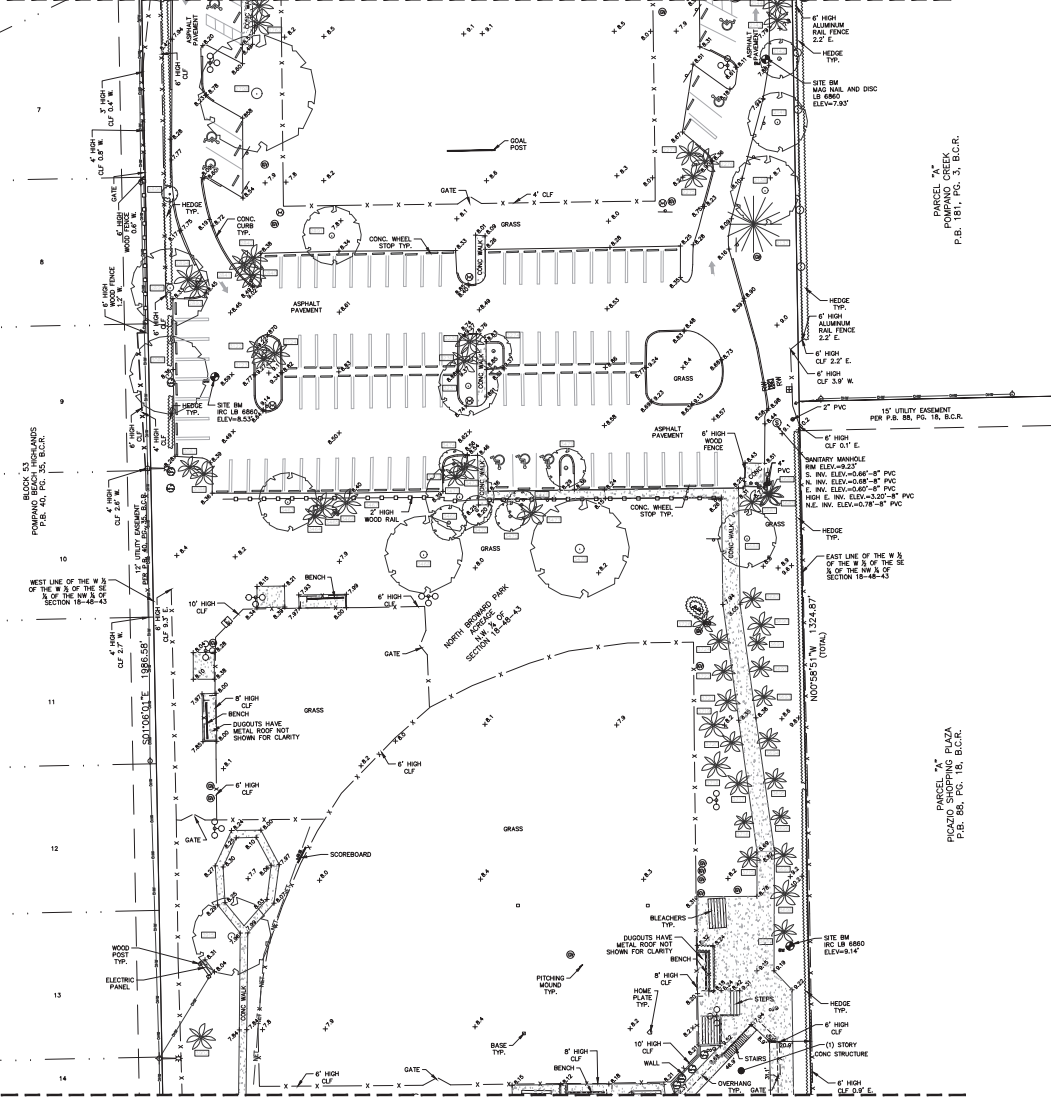
DATE	REVISION
6/13/19	
SCALE	1" = 30'
FIELD BOOK	884
DRAWN BY	S.M.
CHECKED BY	L.P.

KEITH
 301 EAST ATLANTIC BOULEVARD
 POMPAHO BEACH, FLORIDA 33060-6643
 (954) 788-3400 FAX (954) 788-3500
 EMAIL: mail@keithem.com LB NO. 6880

BOUNDARY AND TOPOGRAPHIC SURVEY
NORTH POMPAHO PARK
 A PORTION OF SECTION 18, TOWNSHIP 48 SOUTH, RANGE 43 EAST
 CITY OF POMPAHO BEACH, BROWARD COUNTY, FLORIDA

MATCH LINE "B"
SEE SHEET 2

MATCH LINE "B"
SEE SHEET 2



PARCEL "A"
POMPAHO CREEK
P.B. 181, PG. 3, B.C.R.

PARCEL "B" BLAZA
P.B. 88, PG. 18, B.C.R.

LEGEND:

B.C.R.	BROWARD COUNTY RECORDS	⊗	IRON PIPE	⊗	ELECTRIC METER
BM	BENCHMARK	⊙	IRON ROD	⊙	FLAG POLE
CLF	CATCH BASIN	⊗	FIRE HYDRANT	⊗	GUY ANCHOR
CMP	CHAIN LINK FENCE	⊗	KEY PAD	⊗	HANDICAP PARKING
CONC.	CORRUGATED METAL PIPE	⊗	POST	⊗	IRRIGATION CONTROL VALVE
E.H.H.	CONCRETE	⊗	FOUND	⊗	TRAFFIC DIRECTION ARROWS
ELEV	ELECTRIC HAND HOLE	⊗	FOUND	⊗	METAL LIGHT POLE
FND	ELEVATION	⊗	IRIGATION CONTROL VALVE	⊗	METAL POST
INV.	INVERT	⊗	IRON ROD WITH CAP	⊗	SHRUB
NAVD	FLAT BOOK PAGE	⊗	FLORIDA LICENSED BUSINESS NUMBER	⊗	DENOTES PALM TREE (SEE TREE TABLE)
LB	MEASURED	⊗	NORTH AMERICAN VERTICAL DATUM OF 1988	⊗	DENOTES TREE (SEE TREE TABLE)
(MEAS)	OFFICIAL RECORDS BOOK	⊗	PAGE	⊗	DENOTES PINE TREE (SEE TREE TABLE)
P.V.C.	POLYVINYL CHLORIDE PIPE	⊗	PAGE	⊗	TREE LABEL
R/O/W	RIGHT-OF-WAY	⊗	BARBEQUE GRILL	⊗	CHAIN LINK FENCE
TYP.	TYPICAL	⊗	HARD SURFACE ELEVATION	⊗	WOOD FENCE
■	BASKETBALL HOOP	⊗	SOFT SURFACE ELEVATION	⊗	ALUMINUM FENCE
■	BARBEQUE GRILL	⊗	TELEPHONE RISER	⊗	OVERHEAD LINES
■	HARD SURFACE ELEVATION	⊗	CONCRETE LIGHT POLE	⊗	TOP OF BANK
■	SOFT SURFACE ELEVATION	⊗	UNKNOWN HAND HOLE	⊗	PROTECTIVE NETTING
■	TELEPHONE RISER	⊗	IRRIGATION PUMP HOUSE	⊗	CONCRETE
■	CONCRETE LIGHT POLE	⊗	BOLLARD	⊗	STUBBED CONCRETE
■	UNKNOWN HAND HOLE	⊗	DECORATIVE LIGHT POLE	⊗	
■	IRRIGATION PUMP HOUSE	⊗	ELECTRICAL BOX	⊗	
■	BOLLARD	⊗	ELECTRIC HAND HOLE	⊗	
■	DOUBLE POST SIGN	⊗			
■	CONCRETE LIGHT POLE	⊗			

MATCH LINE "C"
SEE SHEET 4

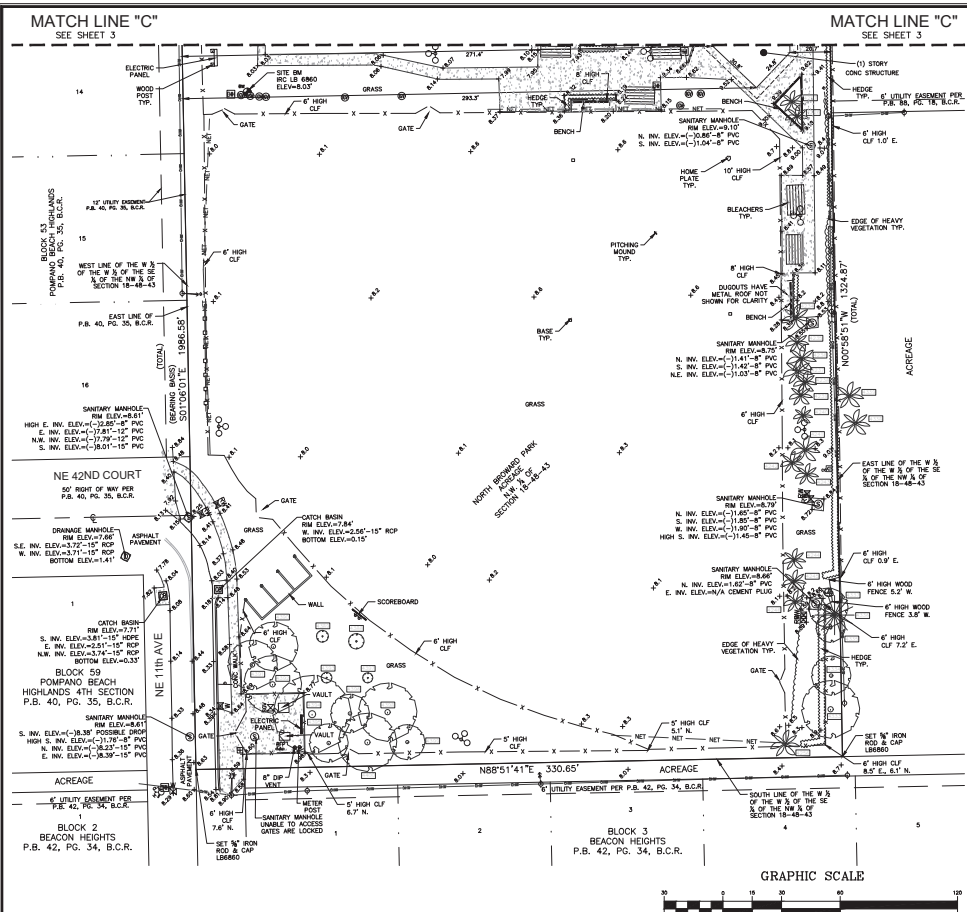
MATCH LINE "C"
SEE SHEET 4

DATE	REVISION BY
6/13/19 <td></td>	
SCALE 1"= 30'	
FIELD BOOK 884	S.M.
DRAWN BY	L.P.
CHECKED BY	

KEITH
301 EAST ATLANTIC BOULEVARD
POMPAHO BEACH, FLORIDA 33060-6643
(954) 788-3400 FAX (954) 788-3500
EMAIL: mail@KEITHteam.com LB NO. 6850

**BOUNDARY AND TOPOGRAPHIC SURVEY
NORTH POMPAHO PARK**

A PORTION OF SECTION 18, TOWNSHIP 48 SOUTH, RANGE 43 EAST
CITY OF POMPAHO BEACH, BROWARD COUNTY, FLORIDA



LEGEND:

B.C.R.	BROWARD COUNTY RECORDS	⊙	IRON PIPE	
BM	BENCHMARK	⊙	IRON ROD	
CB	CATCH BASIN	⊙	FIRE HYDRANT	
CLF	CHAIN LINK FENCE	⊙	KEY PAD	
CMP	CORRUGATED METAL PIPE	⊙	POST	
CONC.	CONCRETE	⊙	CURB INLET	
E.H.H.	ELECTRIC HAND HOLE	⊙	TRAFFIC DIRECTION ARROWS	
ELEV	ELEVATION	⊙	METAL LIGHT POLE	
FND	FOUNDATION	⊙	METAL POST	
FV	IRRIGATION CONTROL VALVE	⊙	SHRUB	
INV.	INVERT	⊙	DENOTES PALM TREE (SEE TREE TABLE)	
IRC	IRON ROD WITH CAP	⊙	DENOTES TREE (SEE TREE TABLE)	
LB	FLORIDA LICENSED BUSINESS NUMBER	⊙	⊙	DENOTES PINE TREE (SEE TREE TABLE)
(MEAS)	MEASUREMENT	⊙	⊙	TREE LABEL
NAVD	NORTH AMERICAN VERTICAL DATUM OF 1988	⊙	⊙	CHAIN LINK FENCE
O.R.B.	OFFICIAL RECORDS BOOK	⊙	⊙	WOOD FENCE
P.B.	PLAT BOOK	⊙	⊙	ALUMINUM FENCE
P.C.	PAGE	⊙	⊙	OVERHEAD LINES
P.V.	POLYVINYL CHLORIDE PIPE	⊙	⊙	TOP OF BANK
R/W	RIGHT-OF-WAY	⊙	⊙	PROTECTIVE NETTING
TYP.	TYPICAL	⊙	⊙	CONCRETE
⊙	BASKETBALL HOOP	⊙	⊙	STUBBLE CONCRETE
⊙	BARBEQUE GRILL	⊙	⊙	
⊙	HARD SURFACE ELEVATION	⊙	⊙	
⊙	SOFT SURFACE ELEVATION	⊙	⊙	
⊙	TELEPHONE RISER	⊙	⊙	
⊙	CONCRETE LIGHT POLE	⊙	⊙	
⊙	UNKNOWN HAND HOLE	⊙	⊙	
⊙	IRRIGATION PUMP HOUSE	⊙	⊙	
⊙	BOLLARD	⊙	⊙	
⊙	DOUBLE POST SIGN	⊙	⊙	
⊙	CONCRETE LIGHT POLE	⊙	⊙	
⊙	IRON PIPE	⊙	⊙	
⊙	IRON ROD	⊙	⊙	
⊙	FIRE HYDRANT	⊙	⊙	
⊙	KEY PAD	⊙	⊙	
⊙	POST	⊙	⊙	
⊙	CURB INLET	⊙	⊙	
⊙	TRAFFIC DIRECTION ARROWS	⊙	⊙	
⊙	METAL LIGHT POLE	⊙	⊙	
⊙	METAL POST	⊙	⊙	
⊙	SHRUB	⊙	⊙	
⊙	DENOTES PALM TREE (SEE TREE TABLE)	⊙	⊙	
⊙	DENOTES TREE (SEE TREE TABLE)	⊙	⊙	
⊙	DENOTES PINE TREE (SEE TREE TABLE)	⊙	⊙	
⊙	TREE LABEL	⊙	⊙	
⊙	CHAIN LINK FENCE	⊙	⊙	
⊙	WOOD FENCE	⊙	⊙	
⊙	ALUMINUM FENCE	⊙	⊙	
⊙	OVERHEAD LINES	⊙	⊙	
⊙	TOP OF BANK	⊙	⊙	
⊙	PROTECTIVE NETTING	⊙	⊙	
⊙	CONCRETE	⊙	⊙	
⊙	STUBBLE CONCRETE	⊙	⊙	

TREE NUMBER	TREE NAME	DIAMETER IN INCHES	CANOPY IN FEET	TREE NUMBER	TREE NAME	DIAMETER IN INCHES	CANOPY IN FEET	TREE NUMBER	TREE NAME	DIAMETER IN INCHES	CANOPY IN FEET
509	FIGUS	10	20	895	UNKNOWN	6	15	2651	MAHOGANY	20	25
510	COCONUT PALM	10	20	896	UNKNOWN	8	20	2652	MAHOGANY	18	12
511	COCONUT PALM	10	20	897	UNKNOWN	24	30	2732	MAHOGANY	20	35
512	COCONUT PALM	10	20	898	FIGUS	18	20	2733	MAHOGANY	18	12
513	COCONUT PALM	10	20	903	MAPLE	18	20	2734	MAHOGANY	18	12
514	COCONUT PALM	10	20	904	PALM	18	18	2762	PALM	12	15
515	PALM	12	10	905	MAPLE	14	15	2763	PALM	8	15
516	PALM	14	12	907	FIGUS	12	20	2798	OAK	24	60
517	PALM	15	12	909	FIGUS	20	40	2800	PALM	12	15
518	COCONUT PALM	11	15	948	PALM	15	15	2841	PALM	12	15
519	PALM	15	12	949	PALM	18	14	2842	PALM	12	15
520	FIGUS	36	50	950	PALM	14	12	2891	MAHOGANY	18	30
521	COCONUT PALM	12	18	951	PALM	15	15	2933	PALM	8	14
522	COCONUT PALM	10	20	952	PALM	13	12	2894	PALM	12	15
524	COCONUT PALM	10	25	964	UNKNOWN	15	50	2895	MAHOGANY	18	40
525	COCONUT PALM	11	20	971	OAK	4	10	2896	MAHOGANY	18	35
526	COCONUT PALM	10	20	972	OAK	4	8	3086	PALM	14	15
527	COCONUT PALM	8	15	994	OAK	4	15	3992	PALM	10	12
528	COCONUT PALM	12	20	995	OAK	4	15	3988	MAHOGANY	20	40
529	COCONUT PALM	8	25	1055	PALM	15	15	3122	PALM	10	12
530	COCONUT PALM	12	25	1063	UNKNOWN	10	18	3123	PALM	10	12
531	COCONUT PALM	10	20	1162	PALM	4	15	3124	MAHOGANY	12	15
532	COCONUT PALM	15	30	1163	PALM	4	5	3237	MAHOGANY	14	30
533	COCONUT PALM	10	20	1286	FIGUS	40	60	3238	PALM	12	15
534	COCONUT PALM	8	15	1287	PALM	12	12	3239	PALM	12	15
535	COCONUT PALM	15	20	1288	PALM	10	10	3244	MAHOGANY	12	18
536	COCONUT PALM	11	18	1289	PALM	12	12	3463	OAK	18	30
537	COCONUT PALM	10	20	1291	PALM	13	15	3464	PALM	12	12
538	COCONUT PALM	9	20	1292	PALM	12	14	3465	PALM	12	15
539	COCONUT PALM	12	20	1293	PALM	10	15	3466	PALM	12	15
540	COCONUT PALM	9	20	1296	FIGUS	40	60	3467	PALM	12	15
541	COCONUT PALM	12	20	1300	FIGUS	55	70	3468	OAK	18	40
542	COCONUT PALM	10	25	1301	PALM	10	15	3469	OAK	12	18
543	PALM	14	12	1302	PALM	12	15	3470	OAK	12	15
544	PALM	15	12	1311	FIGUS	70	70	3471	OAK	20	35
551	PALM	15	15	1312	FIGUS	80	100	3472	PALM	11	12
559	PALM	15	18	1317	FIGUS	80	100	3473	PALM	12	15
563	PALM	18	15	1343	UNKNOWN	12	15	3474	OAK	12	15
564	PALM	15	18	1344	UNKNOWN	15	15	3475	OAK	12	15
572	UNKNOWN	8	20	1345	PALM	10	15	3476	OAK	12	15
573	UNKNOWN	4	12	1346	PALM	12	15	3477	PALM	12	15
574	PALM	15	18	1347	PALM	12	15	3478	OAK	24	30
575	PALM	15	15	1348	PALM	12	15	3479	MAHOGANY	12	15
576	PALM	12	12	1447	PALM	10	12	3685	PALM	12	14
577	PALM	15	15	1448	PALM	10	15	3686	PALM	12	15
578	PALM	15	15	1480	PALM	4	6	3687	PALM	12	13
579	PALM	14	12	1481	SILVER BUTTON WOOD	8	20	3688	MAHOGANY	18	30
580	PALM	14	15	1482	PALM	8	15	3689	PALM	10	10
581	PALM	15	20	1493	PALM	11	15	3690	PALM	10	14
582	PALM	14	16	1494	PALM	10	12	3691	PALM	10	10
583	PALM	12	15	1495	PALM	10	15	3692	PALM	10	12
587	PALM	6	14	1496	PALM	12	15	3693	PALM	10	12
588	PALM	16	18	1497	PALM	12	15	3694	PALM	11	12
589	PALM	12	20	1498	PALM	14	15	3695	PALM	11	12
590	PALM	12	20	1499	PALM	12	14	3696	PALM	10	10
591	PALM	12	20	1500	SILVER BUTTON WOOD	4	10	3697	PALM	12	13
592	PALM	12	20	1502	OAK	18	30	3698	PALM	12	15
593	PALM	12	20	1519	BLACK OLIVE	24	35	3699	PALM	9	13
594	PALM	12	12	1520	PALM	12	14	3700	PALM	9	13
595	PALM	14	16	1843	OAK	18	40	3716	PALM	9	10
596	PALM	15	18	1843	OAK	20	50	3717	PALM	9	14
597	PALM	15	18	1844	OAK	28	60	3718	PALM	9	15
598	PALM	14	12	1845	PALM	15	25	3719	PALM	9	15
599	PALM	12	15	1849	MAHOGANY	14	20	3720	PALM	10	12
600	PALM	14	16	1851	PALM	10	12	3721	PALM	10	13
601	PALM	14	15	1852	PALM	13	14	3722	PALM	10	12
606	PALM	15	16	1853	PALM	13	15	3724	PALM	10	12
608	PALM	5	14	1854	PALM	10	15	3726	PALM	8	12
634	UNKNOWN	5	12	1855	PALM	14	15	3902	PALM	12	15
647	PINE	24	50	1971	PALM	12	14	3915	OAK	18	40
648	PINE	18	35	1972	PALM	10	12	4226	PALM	10	18
649	PINE	15	30	1973	PALM	10	12	4227	PALM	10	18
650	PINE	15	25	2075	PALM	12	15	4234	PALM	18	15
651	PALM	18	20	2078	PALM	14	15	4235	PALM	14	12
652	PALM	15	20	2079	PALM	14	15	4236	PALM	14	15
653	PALM	15	20	2137	PINE	20	30	4237	PALM	14	15
654	PINE	18	40	2138	OAK	18	35	4238	PALM	15	12
655	PINE	20	40	2141	OAK	18	30	4239	PALM	11	12
656	PINE	20	50	2142	OAK	30	20	4240	PALM	8	10
661	PALM	14	12	2143	PALM	11	14	4241	PALM	12	15
692	PALM	15	15	2144	PALM	12	15	4242	PALM	12	12
702	PALM	12	12	2145	PALM	14	15	4243	PALM	12	12
707	OAK	24	50	2146	PALM	30	15	4244	PALM	10	12
708	FIGUS	15	6	2147	FABERIA	20	20	4245	PALM	30	12
709	FIGUS	36	50	2150	MAHOGANY	15	25	4246	PALM	10	12
716	PALM	15	15	2151	MAHOGANY	14	20	4256	PALM	12	15
717	PALM	15	12	2275	PALM	13	14	4333	FIGUS	12	30
718	PALM	14	12	2276	PALM	10	14	4334	FIGUS	6	20
719	PALM	12	15	2277	PALM	10	14	4335	FIGUS	6	15
720	PALM	12	15	2331	PALM	15	15	4336	PINE	20	20
721	PALM	12	12	2332	PALM	14	15	4337	FIGUS	10	20
722	PALM	12	14	2333	PALM	12	15	4338	PALM	10	15
728	PALM	15	18	2516	PALM	10	15	4339	PALM	10	15
729	PALM	18	18	2517	PALM	12	15	4388	MAHOGANY	5	8
730	PALM	18	16	2518	PALM	12	15	4389	MAHOGANY	5	6
731	PALM	15	16	2524	MAHOGANY	18	30	4390	MAHOGANY	15	25
745	OAK	35	45	2527	PALM	10	12	4391	MAHOGANY	13	25
746	OAK	15	35	2528	PALM	10	14	4392	MAHOGANY	18	30
753	PALM	12	13	2529	PALM	30	15	4393	MAHOGANY	4	5
756	OAK	24	50	2530	PALM	12	15	4394	MAHOGANY	18	40
757	OAK	24	50	2531	MAHOGANY	18	30	4			