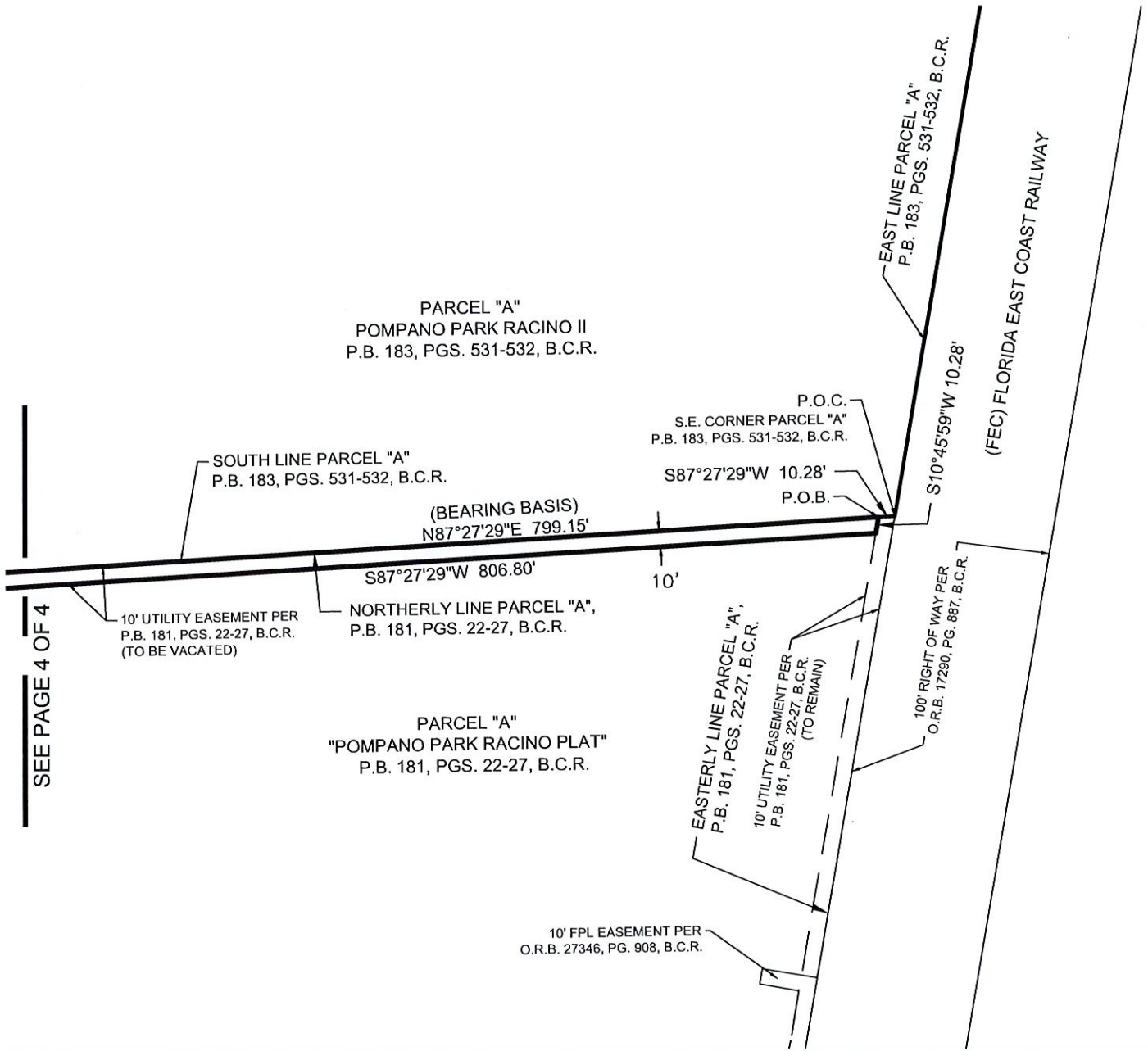


SCALE: 1" = 100'



SEE PAGE 4 OF 4

**SKETCH & DESCRIPTION**

10' UTILITY EASEMENT VACATION

A PORTION OF PARCEL "A"  
"POMPANO PARK RACINO PLAT"  
P.B. 181, PGS. 22-27, B.C.R.

CITY OF POMPANO BEACH, BROWARD COUNTY, FLORIDA



301 EAST ATLANTIC BOULEVARD  
POMPANO BEACH, FLORIDA 33060-6643  
(954) 788-3400 FAX (954) 788-3500  
EMAIL: mail@KEITHteam.com LB NO. 6860

SHEET 3 OF 4

DRAWING NO. 10230.09 SK&D (10' UE VACATION RACINO II)

DATE 01/24/23

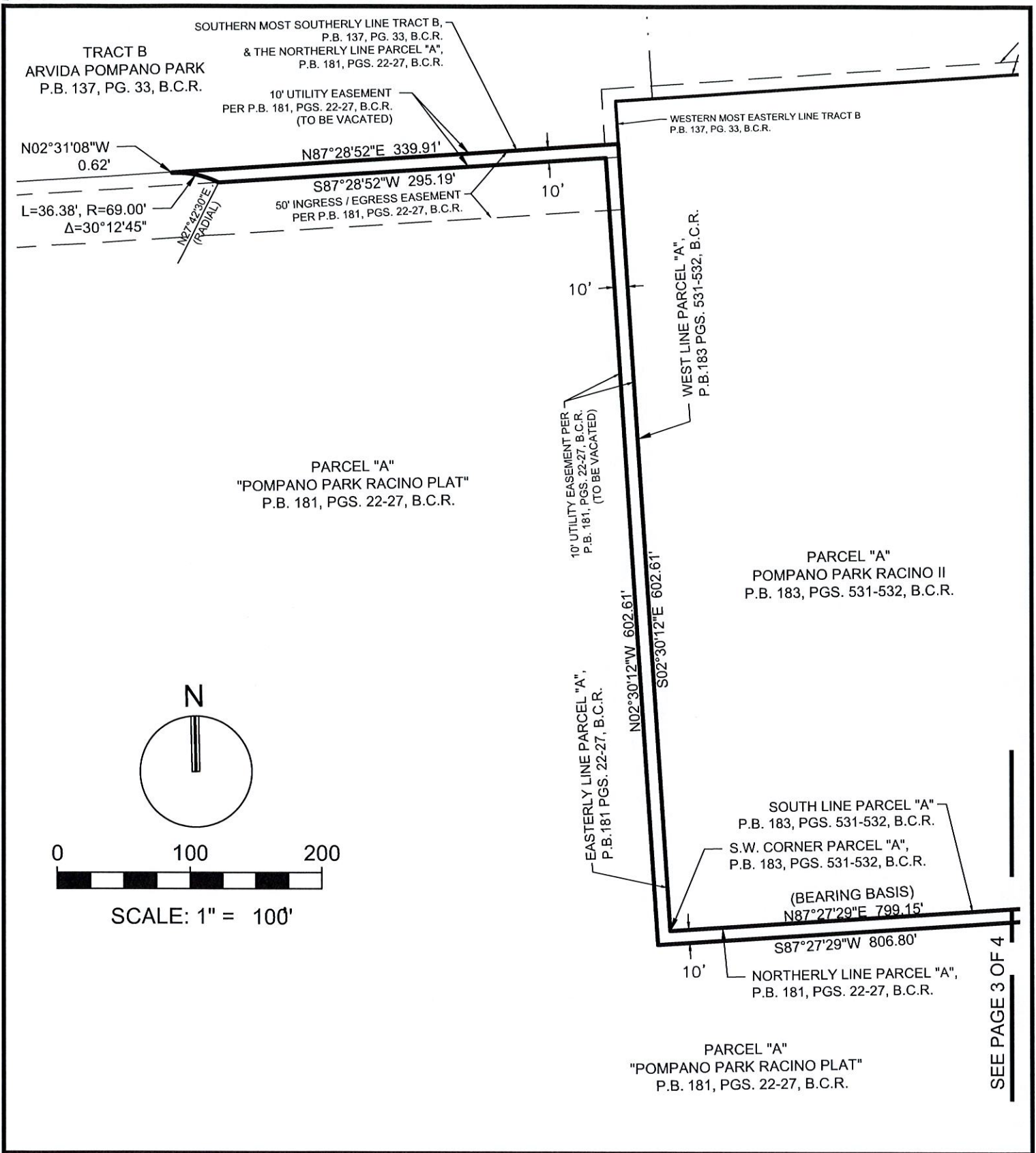
SCALE AS SHOWN

FIELD BK. N/A

DWNG. BY DB

CHK. BY DAS

DATE	REVISIONS



SEE PAGE 3 OF 4

**SKETCH & DESCRIPTION**

10' UTILITY EASEMENT VACATION

A PORTION OF PARCEL "A"  
 "POMPAÑO PARK RACINO PLAT"  
 P.B. 181, PGS. 22-27, B.C.R.

CITY OF POMPAÑO BEACH, BROWARD COUNTY, FLORIDA

**KEITH**

301 EAST ATLANTIC BOULEVARD  
 POMPAÑO BEACH, FLORIDA 33060-6643  
 (954) 788-3400 FAX (954) 788-3500  
 EMAIL: mail@KEITHteam.com LB NO. 6860

SHEET 4 OF 4

DRAWING NO. 10230.09 SK&D (10' UE VACATION RACINO II)

DATE 01/24/23

SCALE AS SHOWN

FIELD BK. N/A

DWNG. BY DB

CHK. BY DAS

DATE	REVISIONS