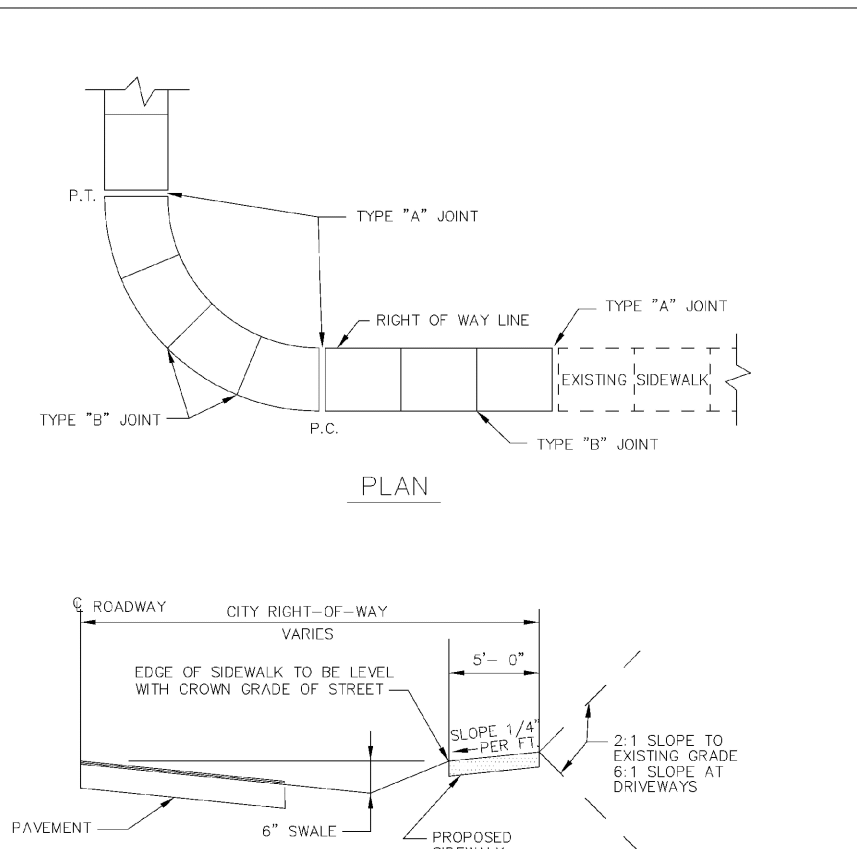


NOTE:
FOR USE ADJACENT TO CONCRETE OR FLEXIBLE PAVEMENT, CONCRETE SHOWN.
EXPANSION JOINT, PREFORMED JOINT FILLER AND JOINT SEAL ARE REQUIRED
BETWEEN CURBS AND CONCRETE PAVEMENT ONLY.

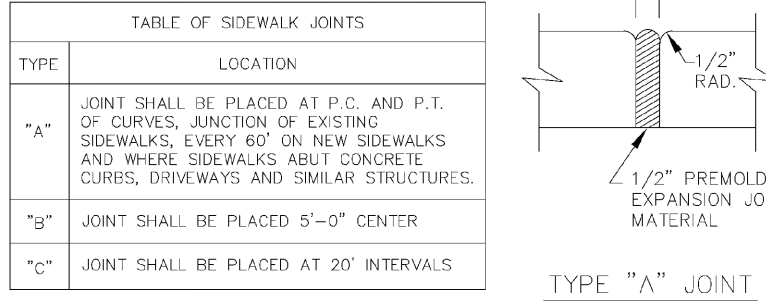
CONCRETE CURB DETAIL

| ENGINEERING STANDARDS 2022 | | |
|----------------------------|-----------------------|----------------|
| REVISIONS | ENGINEERING DIVISION | CONCRETE CURB |
| BY DATE | CITY OF POMPAÑO BEACH | |
| S.S. 01-2014 | | DATE: MAY 2022 |
| S.S. 08-2019 | | DWG. NO. |
| S.S. 07-2019 | | 300-2 |
| SCALE: N.T.S. | | |



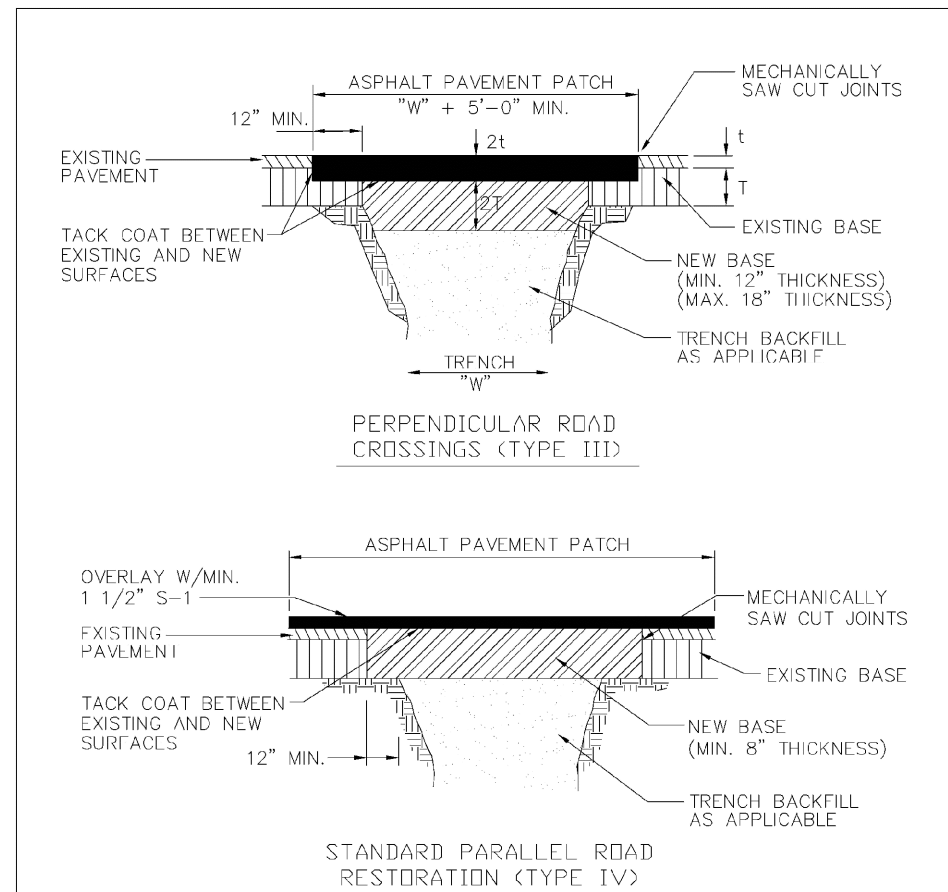
SIDEWALK DETAILS

| ENGINEERING STANDARDS 2022 | | |
|----------------------------|-----------------------|------------------|
| REVISIONS | ENGINEERING DIVISION | SIDEWALK DETAILS |
| BY DATE | CITY OF POMPAÑO BEACH | |
| S.S. 01-2014 | | DATE: JUNE 2022 |
| S.S. 08-2019 | | DWG. NO. |
| S.S. 07-2019 | | 301-2 |
| SCALE: N.T.S. | | |



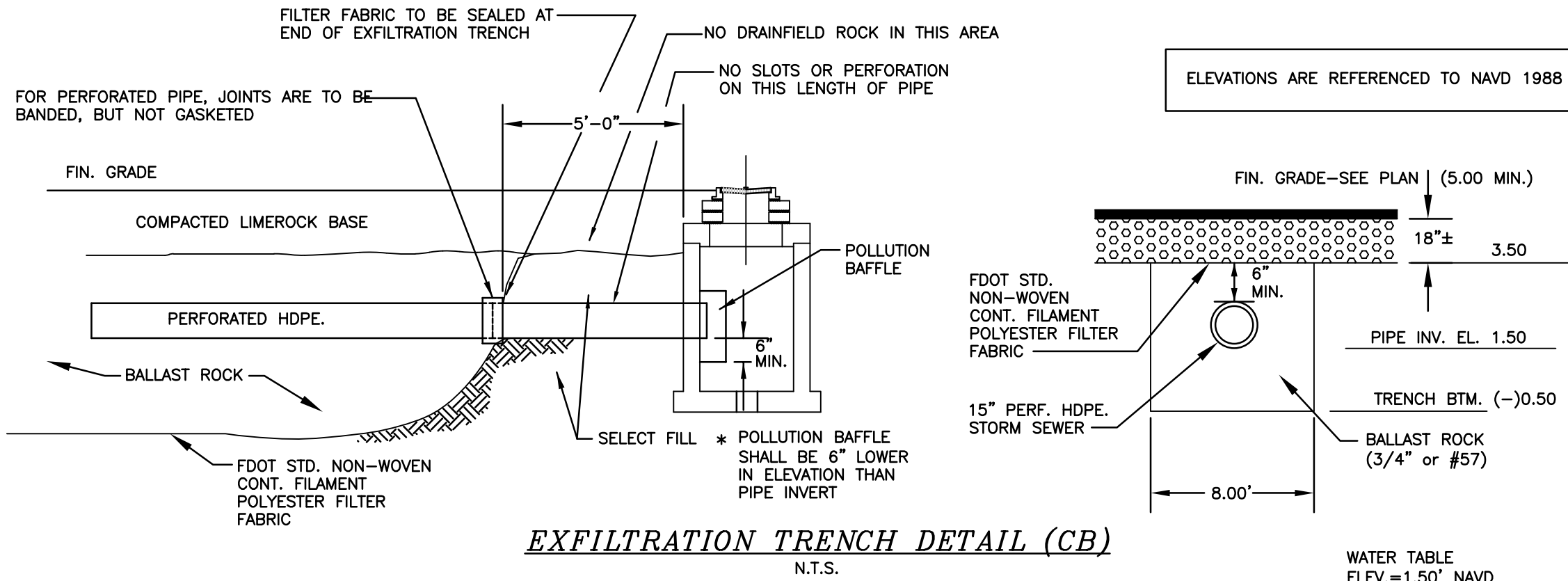
SIDEWALK DETAILS

| ENGINEERING STANDARDS 2022 | | |
|----------------------------|-----------------------|------------------|
| REVISIONS | ENGINEERING DIVISION | SIDEWALK DETAILS |
| BY DATE | CITY OF POMPAÑO BEACH | |
| S.S. 01-2014 | | DATE: JUNE 2022 |
| S.S. 08-2019 | | DWG. NO. |
| S.S. 07-2019 | | 301-2 |
| SCALE: N.T.S. | | |



SURFACE RESTORATION

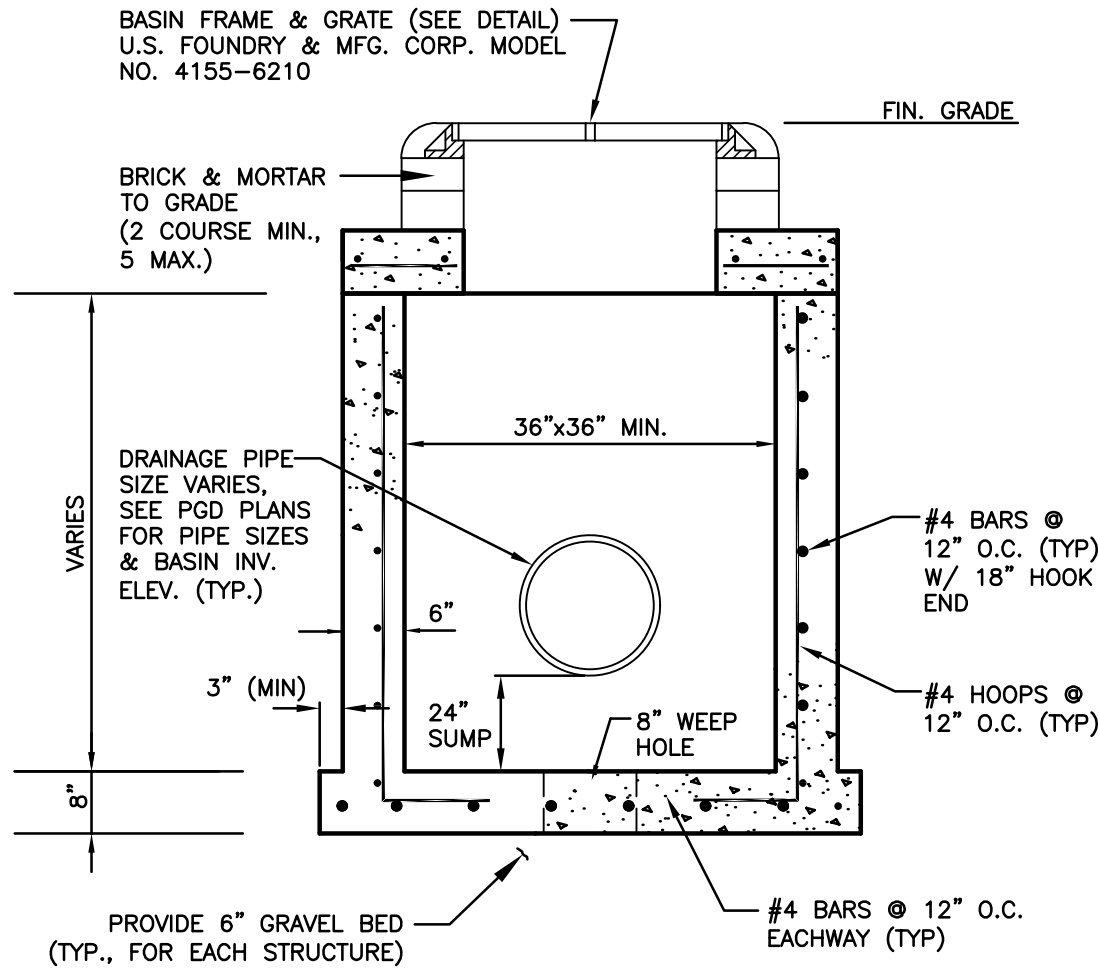
| ENGINEERING STANDARDS 2022 | | |
|----------------------------|-----------------------|---------------------|
| REVISIONS | ENGINEERING DIVISION | SURFACE RESTORATION |
| BY DATE | CITY OF POMPAÑO BEACH | |
| S.S. 01-2014 | | DATE: MAY 2022 |
| S.S. 08-2019 | | DWG. NO. |
| S.S. 07-2019 | | 306-2 |
| SCALE: N.T.S. | | |



EXFILTRATION TRENCH DETAIL (CB)

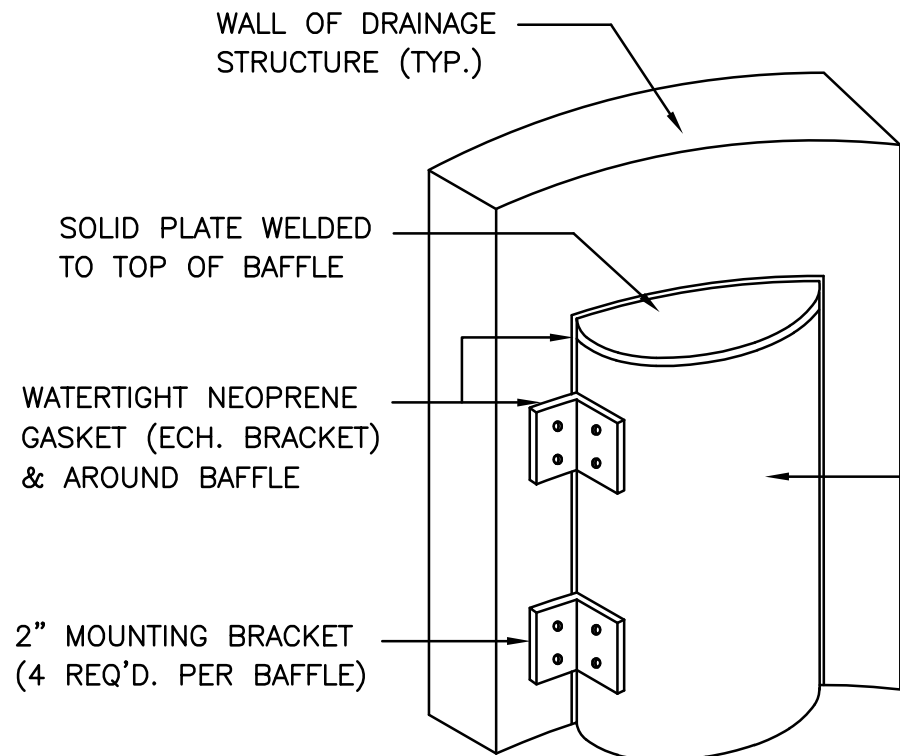
N.T.S.

NOTE:
SURFACE WATER MANAGEMENT SYSTEM
SHALL BE CLEANED/MAINTAINED AS
NEEDED AND AT LEAST ONCE PER YEAR.



TYPICAL CATCH BASIN

N.T.S.

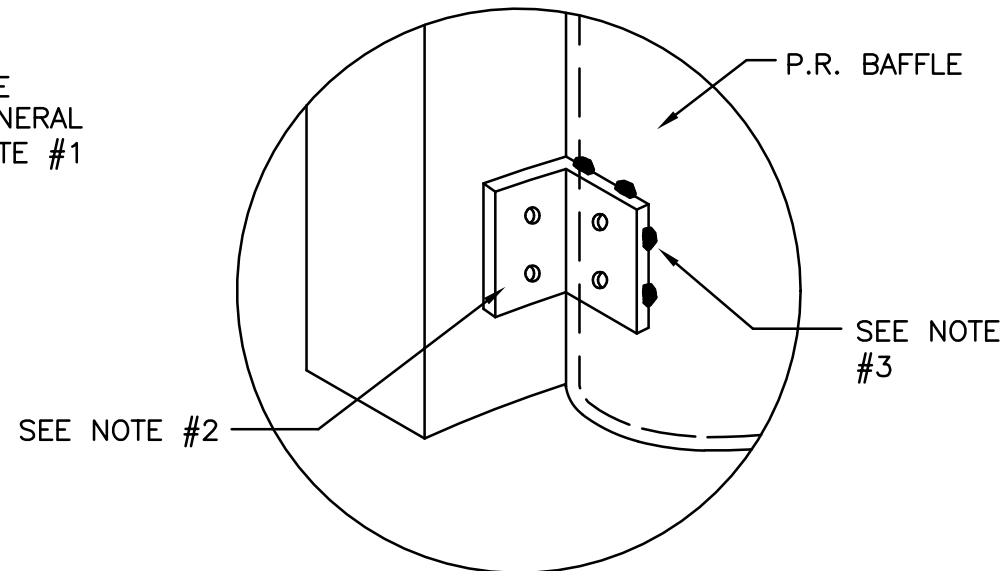


BAFFLE DETAIL

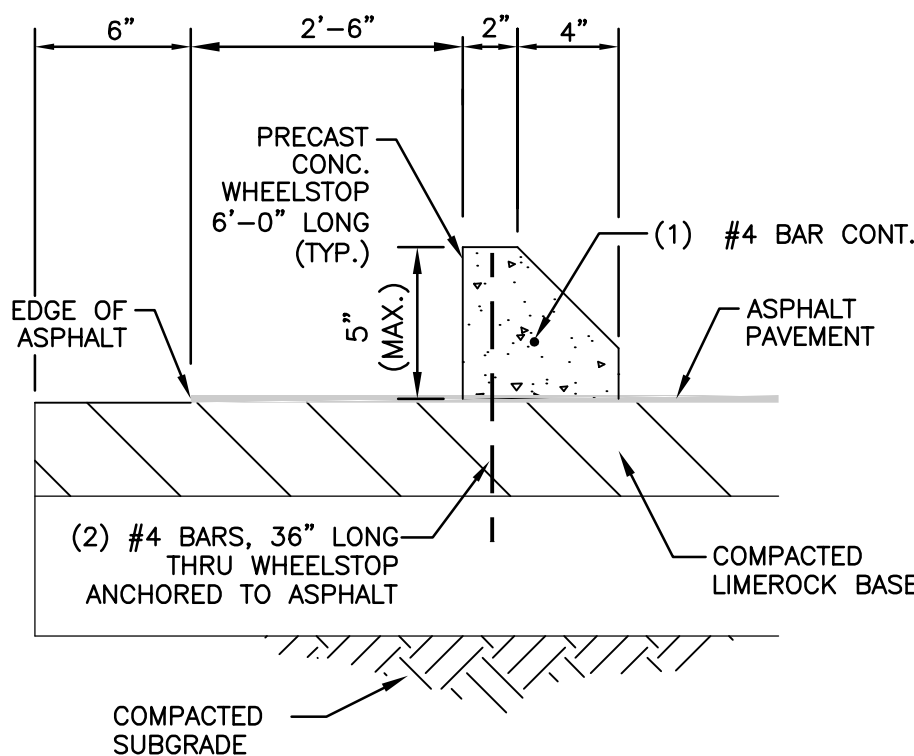
POLLUTION RETARDANT BAFFLE DETAIL

N.T.S.

- GENERAL NOTES:
1. BAFFLE TO BE SECTION OF CMP CUT IN HALF, CMP PIPE FOR BAFFLE SHALL BE THE NEXT LARGER PIPE SIZE THAN DISCHARGE LINE.
 2. 1/2" GALV. LAG BOLT IN LEAD SHIELD (TYP.).
 3. GRATING SHALL BE OFFSET IF STRUCTURE IS USED AS OVERFLOW
 4. SOLID PLATE TO BE WELDED TO TOP OF BAFFLE SECTION

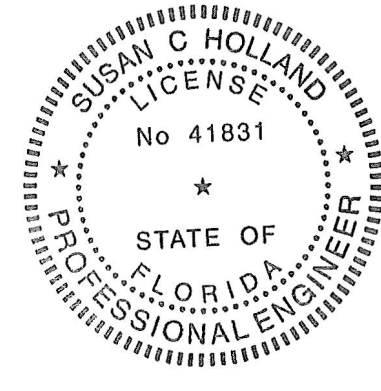


BRACKET DETAIL



CONCRETE WHEELSTOP

N.T.S.



This item has been digitally signed & sealed by Susan C. Holland, P.E. Printed copies of this document are not considered signed and sealed and the signature must be verified on any electronic copies.

Susan C. Holland
Digitally signed by Susan C. Holland
Date: 2024.05.14 08:41:18 -04'00'

DETAILS

SCALE: N.T.S.

DRC
PZ23-12000045
07/03/2024

| FINAL APPROVAL | | SCALE: N.T.S. | | DESIGNED BY: SCH | | CHECKED BY: SCH | |
|---|--|----------------|--|--------------------|--|--|--|
| HOLLAND ENGINEERING CIVIL ENGINEERING SOLUTIONS 301 SW 7th Street Fort Lauderdale, Florida 33315 Phone: 954.367.0371 Certificate of Authorization 7925 | | DATE: 02/29/24 | | FIELD BOOK: N/A | | | |
| NO. OF SHEETS: 7 | | SHEET NO. C-6 | | CAD FILE NO. 23-16 | | CONDO HOTEL 872 E. MCNAB ROAD POMPAÑO BEACH, FLORIDA 33060 | |