

A VIOLATION OF THE LAW FOR ANY PERSON, UNLESS ACTING UNDER THE DIRECTION OF A LICENSED ARCHITECT TO ALTER THESE PLANS AND SPECIFICATIONS. THIS DOCUMENT CONTAINS PROPERTY INFORMATION AND SHALL NOT BE USED OR REPRODUCED OR ITS CONTENTS DISCLOSED, IN WHOLE OR IN PART, WITHOUT THE PRIOR WRITTEN CONSENT OF GALLO HERBERT ARCHITECTS ARCHITECTS. COPYRIGHT 2018 GALLO HERBERT ARCHITECTS

ASPIRE 1650

AFFORDABLE HOUSING

90 - UNITS

NW 30rd AVE. BLOUNT Rd.

POMPANO BEACH, FLORIDA

LIST OF DRAWINGS	
SHEET NO.	TITLE
	COVER SHEET
AS-101	ARCHITECTURAL SITE PLAN
AS-102	SITE DETAILS AND NOTES
G-101	LIFE SAFETY PLAN
G-102	LIFE SAFETY PLAN
A-101	FIRST FLOOR PLAN
A-102	2ND FLOOR PLAN
A-103	3RD FLOOR PLAN
A-104	4TH FLOOR PLAN
A-105	TYP. FLOOR PLAN 5TH THRU 8TH
A-106	ROOF PLAN
A-201	BUILDING ELEVATIONS
A-202	BUILDING ELEVATIONS
A-203	COLOR EAST ELEVATION
A-204	COLOR NORTH ELEVATION
A-205	COLOR WEST ELEVATION
A-206	COLOR SOUTH ELEVATION
A-300	RENDERS
A-400	UNITS FLOOR PLAN



ARCHITECT

GHA ARCHITECTS & DEVELOPMENT CONSULTANTS
1311 WEST NEWPORT CENTER DRIVE, SUITE A
DEERFIELD BEACH, FLORIDA 33442
PH: (954) 794-0300 FAX: (954) 794-0301

CIVIL ENGINEER

KEITH - ENGINEERING
301 E ATLANTIC Blvd
POMPANO BEACH, FLORIDA 33060
PH: (954) 788-3400

LANDSCAPE

KEITH - ENGINEERING
301 E ATLANTIC Blvd
POMPANO BEACH, FLORIDA 33060
PH: (954) 788-3400

CO-DEVELOPER

GREEN MILLS GROUP
3323 W COMMERCIAL BLVD, SUITE E220
FORT LAUDERDALE, FLORIDA 33309
PH: (954) 507-6222

FLORIDA BUILDING CODE, BUILDING 8th, Edition (FBC-B) 2023
FLORIDA BUILDING CODE, PLUMBING 8th, Edition (FBC-P) 2023
FLORIDA BUILDING CODE, MECHANICAL 8th, Edition (FBC-M) 2023
FLORIDA BUILDING CODE, ELECTRICAL 8th, Edition (FBC-E) 2023
FLORIDA BUILDING CODE, ACCESSIBILITY 8th, Edition (FBC-A) 2023

SUPPLEMENTS

FLORIDA FIRE PREVENTION CODE (FFPC) 8th, Edition
NFPA 1, 2012 EDITION "FIRE CODE"
NFPA 101, 2012 EDITION "LIFE SAFETY CODE"
NFPA 72, 2010 EDITION "NATIONAL FIRE ALARM CODE"
NFPA 70, 2017 EDITION "NATIONAL ELECTRICAL CODE"
NFPA 10, 2010 EDITION "STANDARD FOR PORTABLE FIRE EXTINGUISHER"
NFPA 14, 2010 EDITION "STANDARD FOR THE INSTALLATION OF STANDPIPE & HOSE SYSTEM"
NFPA 20, 2010 EDITION "STANDARD FOR THE INSTALLATION OF STATIONARY PUMPS FOR FIRE PROTECTION"
NFPA 110, 2010 EDITION "STANDARD FOR EMERGENCY AND STAND-BY POWER SUPPLY"

CONSTRUCTION OF A RESIDENTIAL USE EIGHT-STORY BUILDING 90 UNIT MID-RISE BUILDING

TOTAL BUILDING AREA: 126,713 S.F.

PRIMARY OCCUPANCY: NEW APARTMENT BUILDING NFPA 101 CH. 30

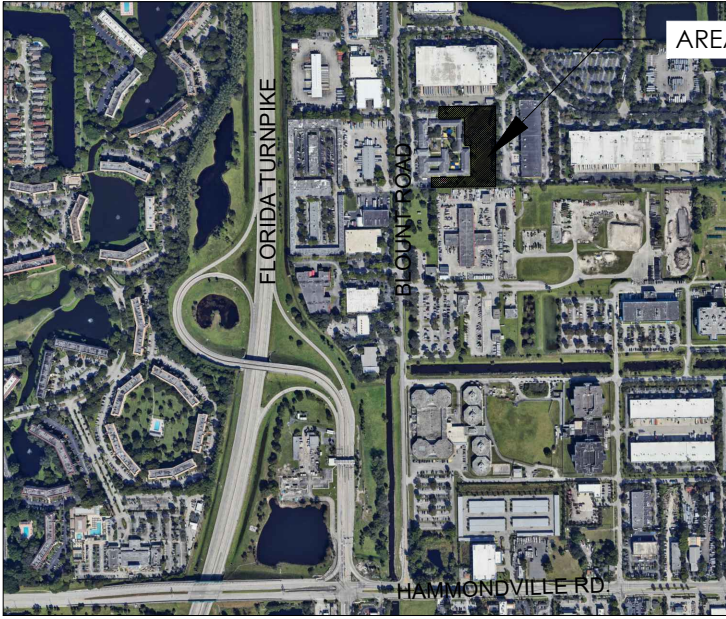
SPRINKLER NOTE: BUILDING FULLY SPRINKLERED WITH FIRE ALARM

FIRE PROTECTION AND FIRE ALARM DRAWINGS FOR REFERENCE ONLY. A SEPARATE PERMIT WILL BE REQUIRE.

5% UFAS UNITS REQUIRED
2% HVI REQUIRED

UFAS= (4.5 UNITS REQUIRED - 14 PROVIDE 15.5%)

HVI= (1.8 UNITS REQUIRED - 2 PROVIDE)



A1 PROJECT DIRECTORY

A3 CODE REFERENCES

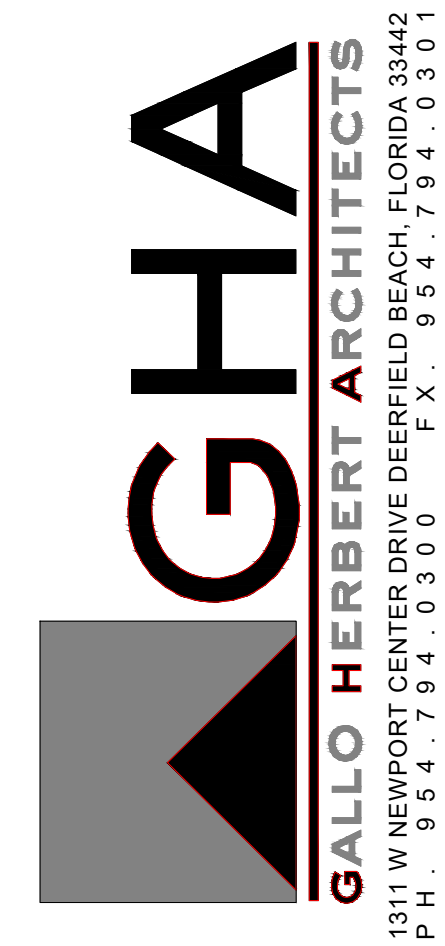
A4 PROJECT SUMMARY

PZ25- 12000022

07/15/2025

A5 UFAS & HVI UNITS

A6 LOCATION MAP



AA26001731

SEAL

WILLIAM J. GALLO FL AR0008440



BRIAN P. HERBERT FL AR0015474

PROJECT

90 UNITS

ASPIRE 1650

NW 30rd AVE - BLOUNT Rd.
POMPANO BEACH, FLORIDA

OWNER

REVISIONS		
No.	Description	Date

PROJECT STATUS

AAC

DATE

10-03-2025

PROJECT NUMBER

49-2023

SCALE

AS SHOWN

DRAWN BY: CMR

CHECKED BY: BPH

DRAWING TITLE

COVER SHEET

DRAWING NUMBER