

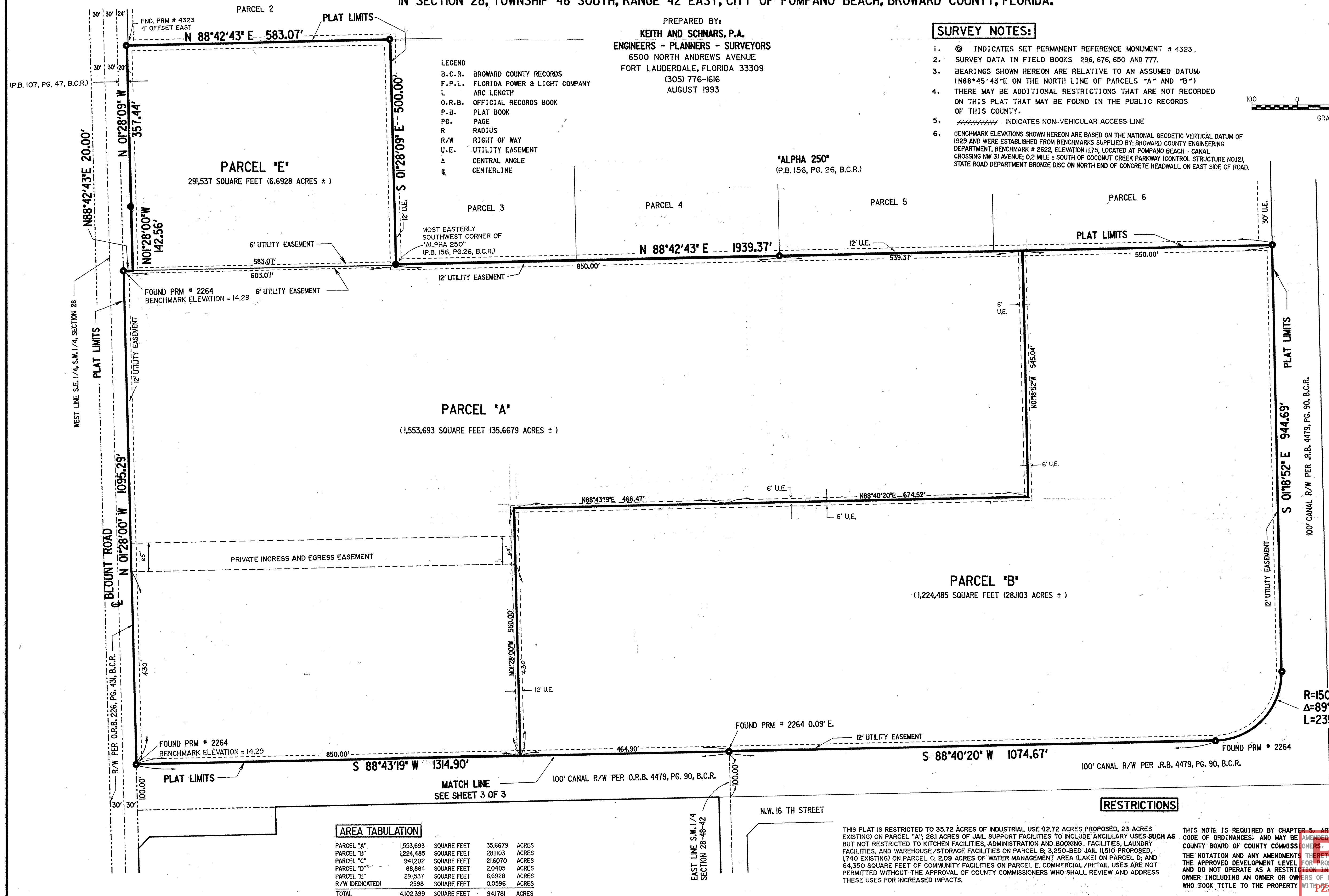
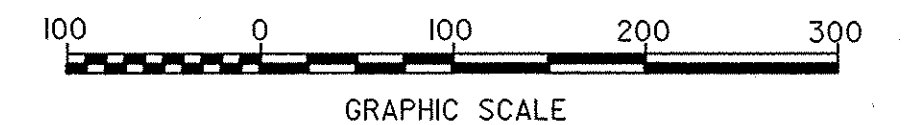
# BROWARD COUNTY PLAT NO. 2

A REPLAT OF PARCEL "A", NORTH BROWARD DETENTION COMPLEX, (P.B. 127, PG. 25, B.C.R.) AND A REPLAT OF PARCELS "A" AND "B", "NUTTER SUBDIVISION NO. 1", (P.B. 113, PG. 9, B.C.R.), AND A REPLAT OF PARCEL "A" AND PORTION OF PARCEL "B", BROWARD COUNTY PLAT NO. 1 (P.B. 107, PG. 47, B.C.R.)  
IN SECTION 28, TOWNSHIP 48 SOUTH, RANGE 42 EAST, CITY OF POMPANO BEACH, BROWARD COUNTY, FLORIDA.

PREPARED BY:  
**KEITH AND SCHNARS, P.A.**  
ENGINEERS - PLANNERS - SURVEYORS  
6500 NORTH ANDREWS AVENUE  
FORT LAUDERDALE, FLORIDA 33309  
(305) 776-1616  
AUGUST 1993

## SURVEY NOTES:

1. © INDICATES SET PERMANENT REFERENCE MONUMENT # 4323.
2. SURVEY DATA IN FIELD BOOKS 296, 676, 650 AND 777.
3. BEARINGS SHOWN HEREON ARE RELATIVE TO AN ASSUMED DATUM. (N88°45'43"E ON THE NORTH LINE OF PARCELS "A" AND "B")
4. THERE MAY BE ADDITIONAL RESTRICTIONS THAT ARE NOT RECORDED ON THIS PLAT THAT MAY BE FOUND IN THE PUBLIC RECORDS OF THIS COUNTY.
5. ##### INDICATES NON-VEHICULAR ACCESS LINE
6. BENCHMARK ELEVATIONS SHOWN HEREON ARE BASED ON THE NATIONAL GEODETIC VERTICAL DATUM OF 1929 AND WERE ESTABLISHED FROM BENCHMARKS SUPPLIED BY: BROWARD COUNTY ENGINEERING DEPARTMENT, BENCHMARK # 2622, ELEVATION 14.29, LOCATED AT POMPANO BEACH - CANAL CROSSING NW 31 AVENUE, 0.2 MILE S. OF COCONUT CREEK PARKWAY (CONTROL STRUCTURE NO. 12), STATE ROAD DEPARTMENT BRONZE DISC ON NORTH END OF CONCRETE HEADWALL ON EAST SIDE OF ROAD.



## AREA TABULATION

PARCEL "A"	1,553,693	SQUARE FEET	35.6679	ACRES
PARCEL "B"	1,224,485	SQUARE FEET	28.1103	ACRES
PARCEL "C"	941,202	SQUARE FEET	21.6070	ACRES
PARCEL "D"	88,884	SQUARE FEET	2.0405	ACRES
PARCEL "E"	291,537	SQUARE FEET	6.6928	ACRES
R/W (DEDICATED)	2598	SQUARE FEET	0.0596	ACRES
TOTAL	4,102,399	SQUARE FEET	94.1781	ACRES

THIS PLAT IS RESTRICTED TO 35.72 ACRES OF INDUSTRIAL USE (12.72 ACRES PROPOSED, 23 ACRES EXISTING) ON PARCEL "A"; 28.1 ACRES OF JAIL SUPPORT FACILITIES TO INCLUDE ANCILLARY USES SUCH AS BUT NOT RESTRICTED TO KITCHEN FACILITIES, ADMINISTRATION AND BOOKING FACILITIES, LAUNDRY FACILITIES, AND WAREHOUSE/STORAGE FACILITIES ON PARCEL B; 3,250-BED JAIL (1,510 PROPOSED, 1,740 EXISTING) ON PARCEL C; 2.09 ACRES OF WATER MANAGEMENT AREA (LAKE) ON PARCEL D; AND 64,350 SQUARE FEET OF COMMUNITY FACILITIES ON PARCEL E. COMMERCIAL/RETAIL USES ARE NOT PERMITTED WITHOUT THE APPROVAL OF COUNTY COMMISSIONERS WHO SHALL REVIEW AND ADDRESS THESE USES FOR INCREASED IMPACTS.

THIS NOTE IS REQUIRED BY CHAPTER 5, ARTICLE IV, BROWARD COUNTY CODE OF ORDINANCES, AND MAY BE AMENDED BY APPROVAL OF THE BROWARD COUNTY BOARD OF COUNTY COMMISSIONERS. THE NOTATION AND ANY AMENDMENTS THEREON ARE SOLELY INDICATING THE APPROVED DEVELOPMENT LEVEL FOR PROPERTY LOCATED WITHIN THE PLAT AND DO NOT OPERATE AS A RESTRICTION IN FAVOR OF ANY PROPERTY OWNER INCLUDING AN OWNER OR OWNERS OF PROPERTY WITHIN THIS PLAT WHO TOOK TITLE TO THE PROPERTY WITH REFERENCE TO THIS PLAT.

PZ25-12000022  
11/19/2025  
82-MP-93