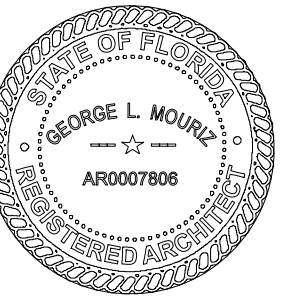


[illegible]

GEORGE L. MOURIZ
AR0007806

POMPANO BEACH APTS

LOCATED AT:
IMPANO BEACH

PORTMAN HOLDINGS

ARCHITECT'S BUILDING CODE STATEMENT/
TO THE BEST OF THE ARCHITECT'S
KNOWLEDGE THE PLANS AND SPECIFICATIONS
COMPLY WITH THE FLORIDA BUILDING CODE
EIGHTH EDITION (2023) AND THE
APPLICABLE FIRE SAFETY STANDARDS AS
DETERMINED BY THE LOCAL AUTHORITY
AND CHAPTER 633 FLORIDA STATUTES.

COPYRIGHT © 2024 MSA ARCHITECTS, INC.,
THE ARCHITECTURAL DESIGN AND DETAIL
DRAWINGS FOR THIS BUILDING AND/OR
OVERALL PROJECT ARE THE LEGAL
PROPERTY OF MSA ARCHITECTS, INC.
RESERVED BY THE ARCHITECT, THEIR USE
FOR REPRODUCTION, CONSTRUCTION, OR
DISTRIBUTION IS PROHIBITED UNLESS
AUTHORIZED IN WRITING BY THE ARCHITECT.

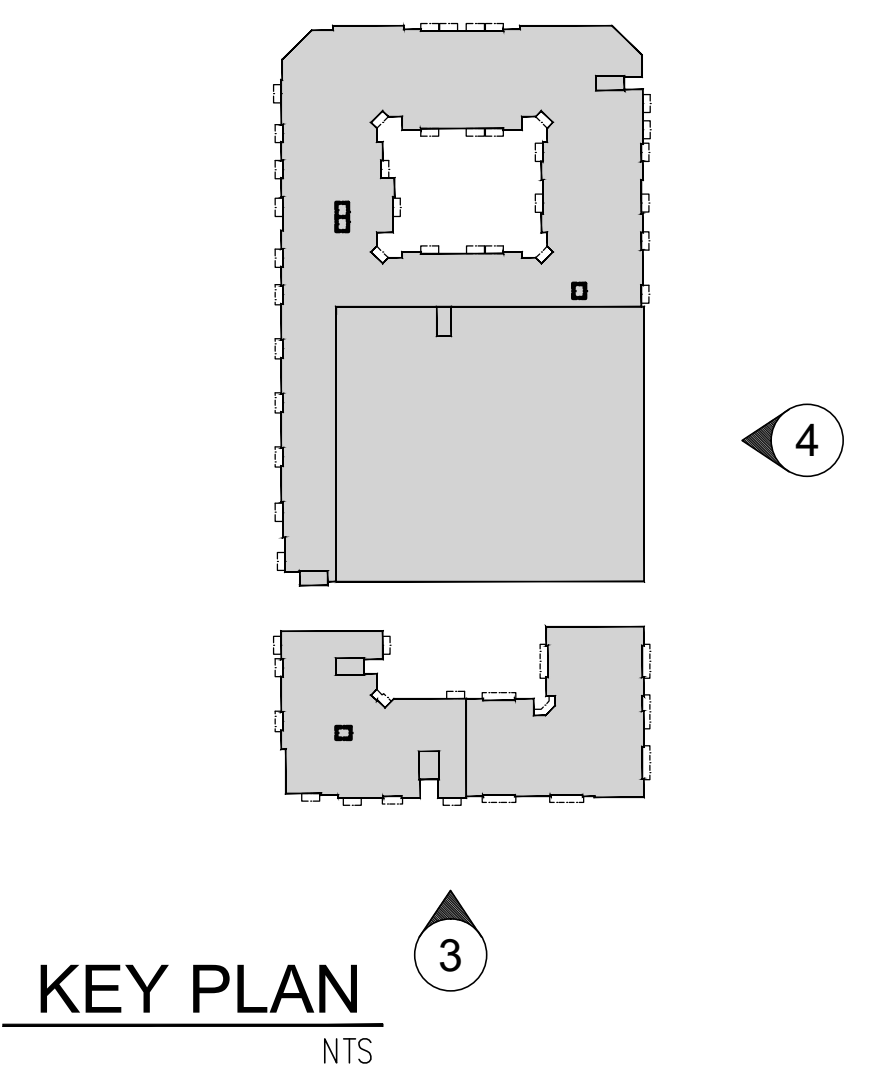
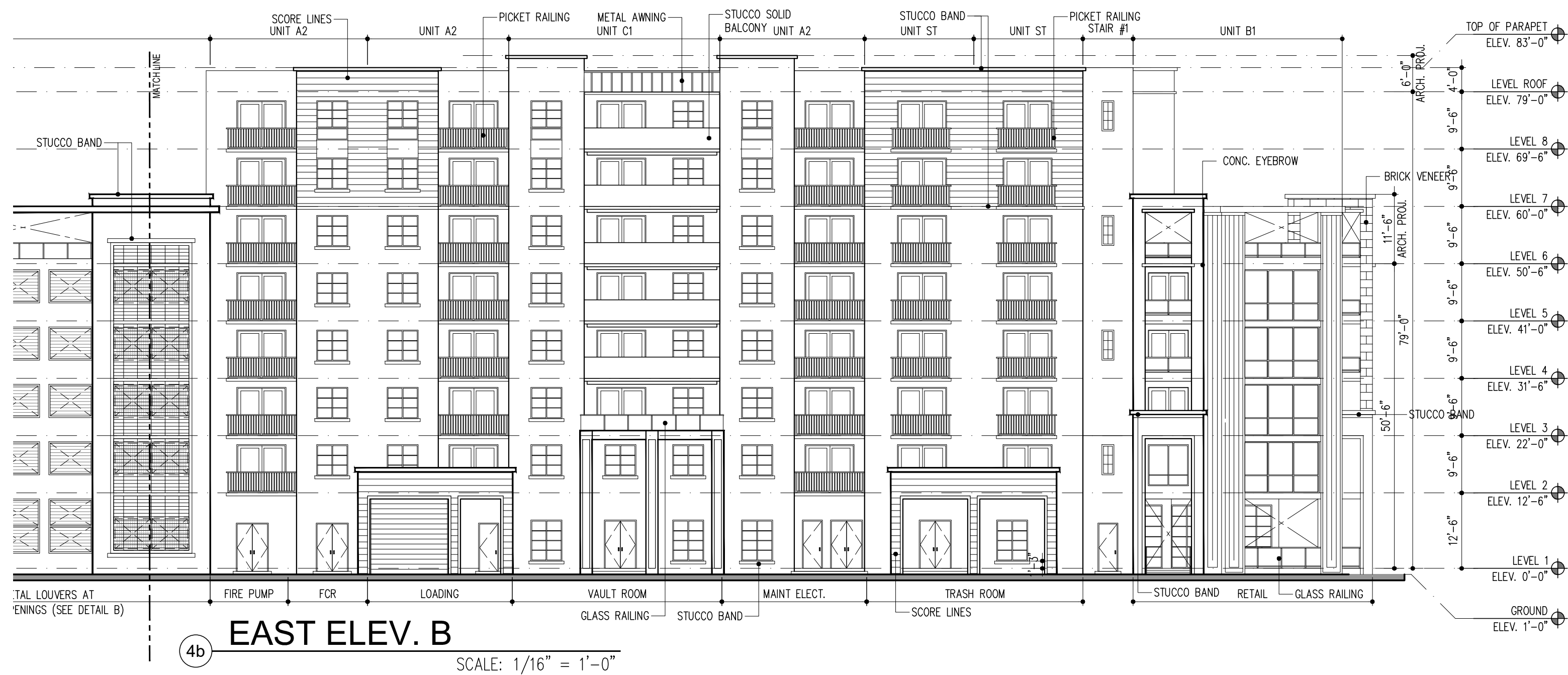
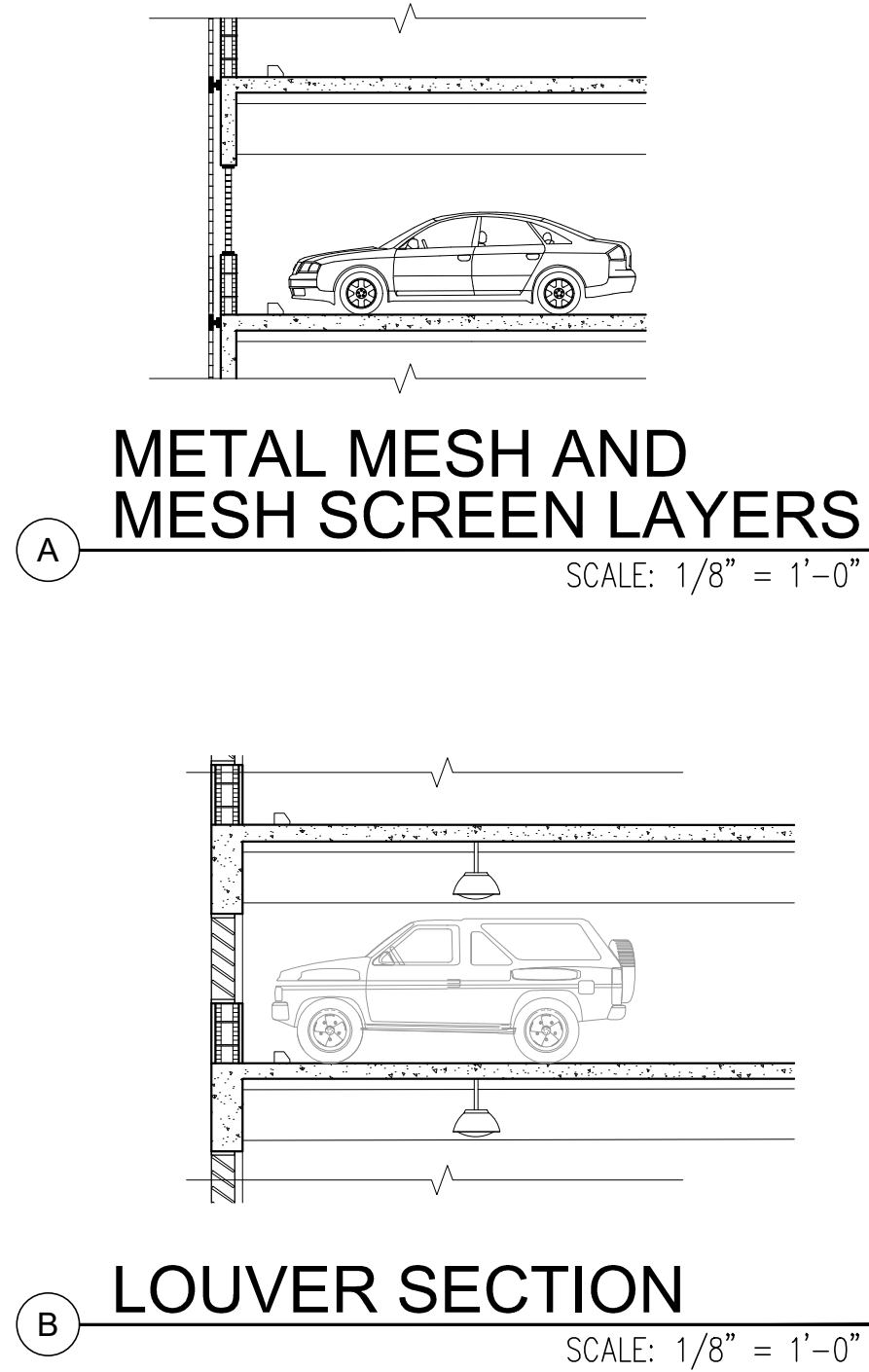
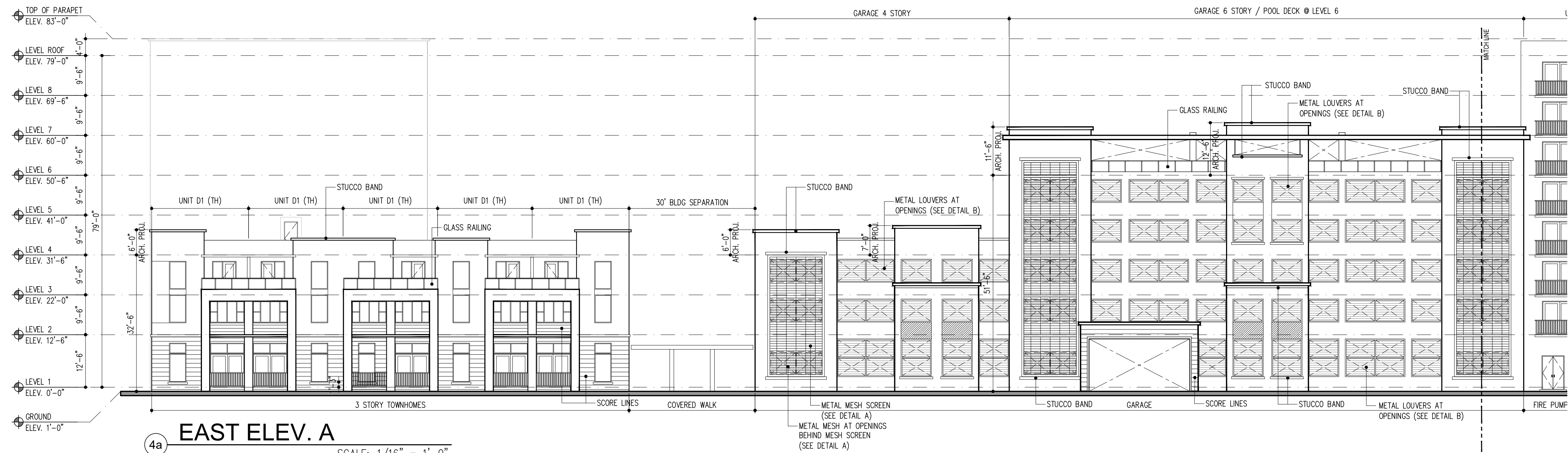


**MSA
ARCHITECTS, INC.**
8950 SW 74TH CT #1513
MIAMI, FL 33156
P: (305) 273-9911



MSA
ARCHITECTS
ARCHITECTURE & PLANNING

Project No: 2254.prj
Contract Date:
Scale:
TITLE:
ELEVATIONS
SHEET:



KEY PLAN

ELEVATIONS

SCALE: 1/16" = 1'-0"

DRC

A-3.2

PZ25-12000001

04/02/2025