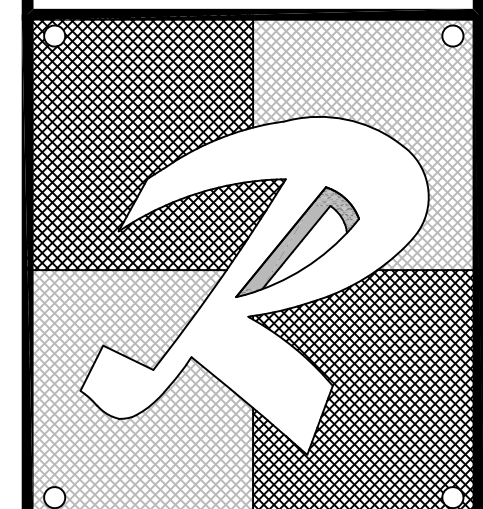


ALL IDEAS, DESIGNS, ARRANGEMENTS, AND PLANS INDICATED OR REPRESENTED BY THIS DRAWING ARE OWNED BY, AND THE PROPERTY OF RAMOS ARCHITECTS & ASSOC. AND WERE CREATED, EVOLVED AND DEVELOPED FOR USE ON, AND IN CONNECTION WITH THE SPECIFIED PROJECT. NONE OF SUCH IDEAS, DESIGNS, ARRANGEMENTS OR PLANS SHALL BE USED BY OR DISCLOSED TO ANY PERSON, FIRM OR CORPORATION FOR ANY PURPOSE WHATSOEVER WITHOUT THE WRITTEN PERMISSION OF RAMOS ARCHITECTS & ASSOCIATES. WRITTEN DIMENSIONS OF THESE DRAWINGS SHALL HAVE PRECEDENCE OVER SCALED DIMENSIONS. CONTRACTORS SHALL VERIFY, AND BE RESPONSIBLE FOR ALL DIMENSIONS AND CONDITIONS ON THE JOB AND THIS OFFICE MUST BE NOTIFIED OF ANY VARIATIONS FROM THE DIMENSIONS AND CONDITIONS SHOWN BY THESE DRAWINGS. SHOP DETAILS MUST BE SUBMITTED TO THIS OFFICE FOR APPROVAL BEFORE PROCEEDING WITH FABRICATION. ALL RIGHTS RESERVED © 2026.



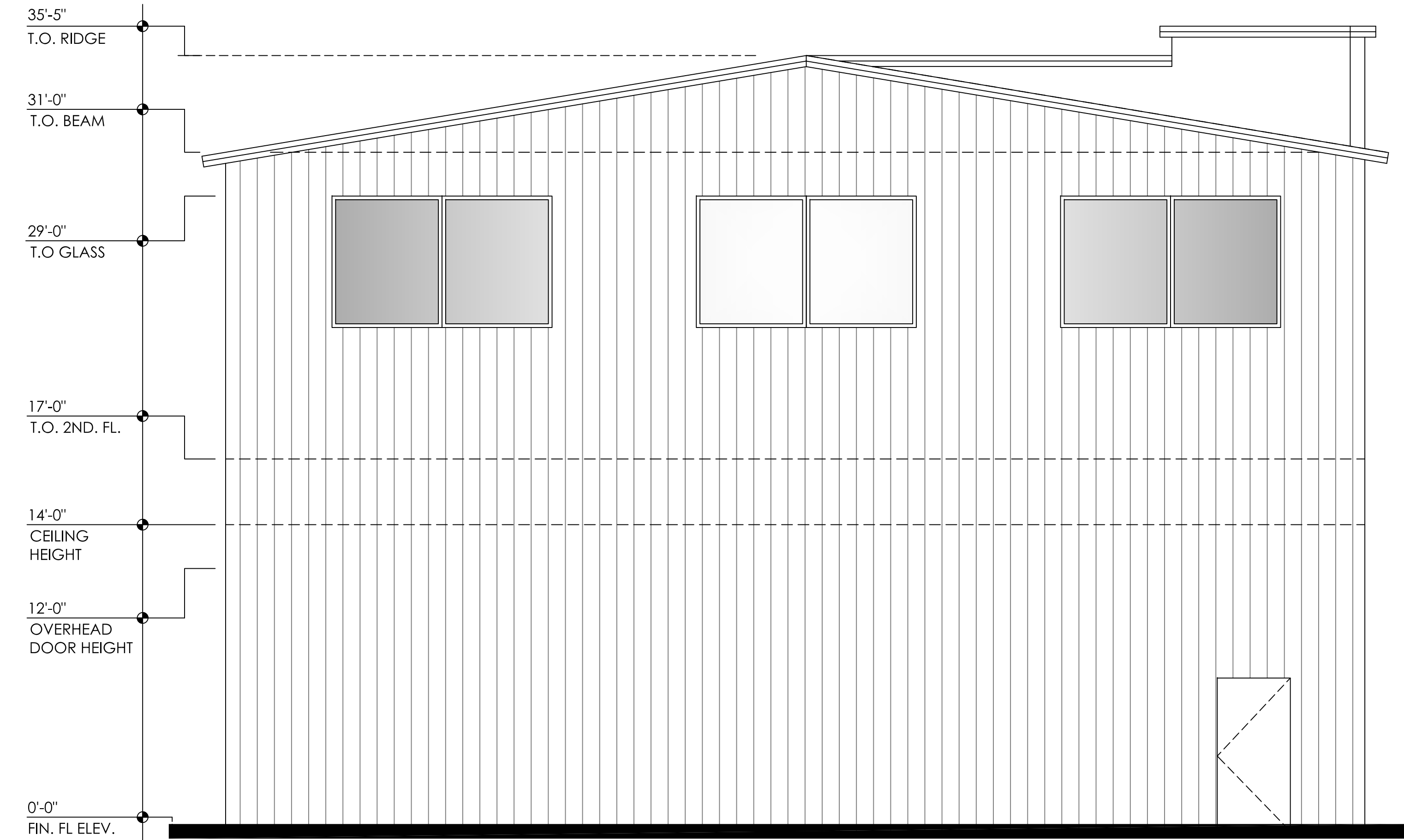
PROPOSED NEW TWO-STORY BUILDING FOR:  
**50 S.W. 5TH STREET**  
 50 S.W. 5TH STREET POMPANO BEACH, FL 33060  
**Ramos Architects & Associates**  
 780 TAMiami CANAL ROAD MIAMI, FL 33144 ■ (305) 506-7388

SEAL:  
 ARCHITECT OF RECORD  
 JOSE RAMOS | FLA. REG. AR11115 | AAC1595

DATE: 02/18/25  
 01/13/26

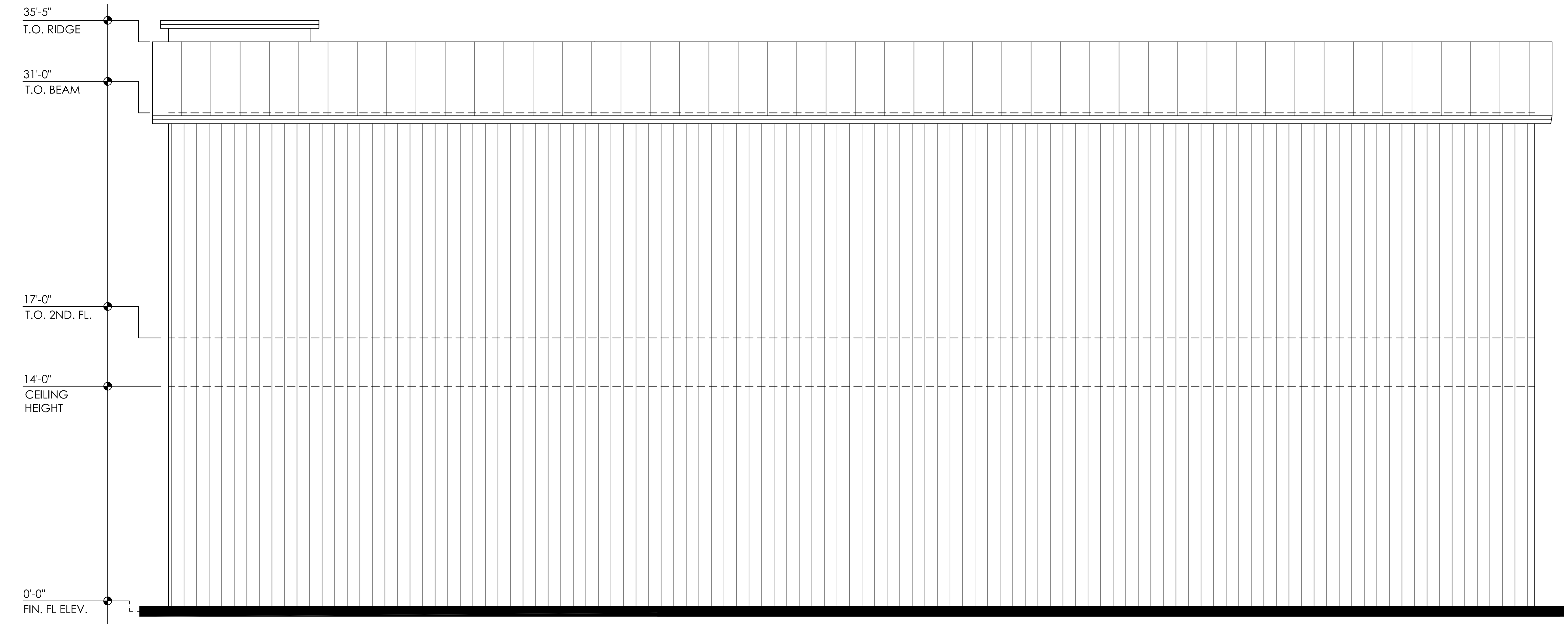
PROJECT NUMBER  
**24151**

SHEET  
**A-3**



**REAR ELEVATION**

SCALE: 1/4" = 1'-0"



**LEFT ELEVATION**

SCALE: 1/4" = 1'-0"