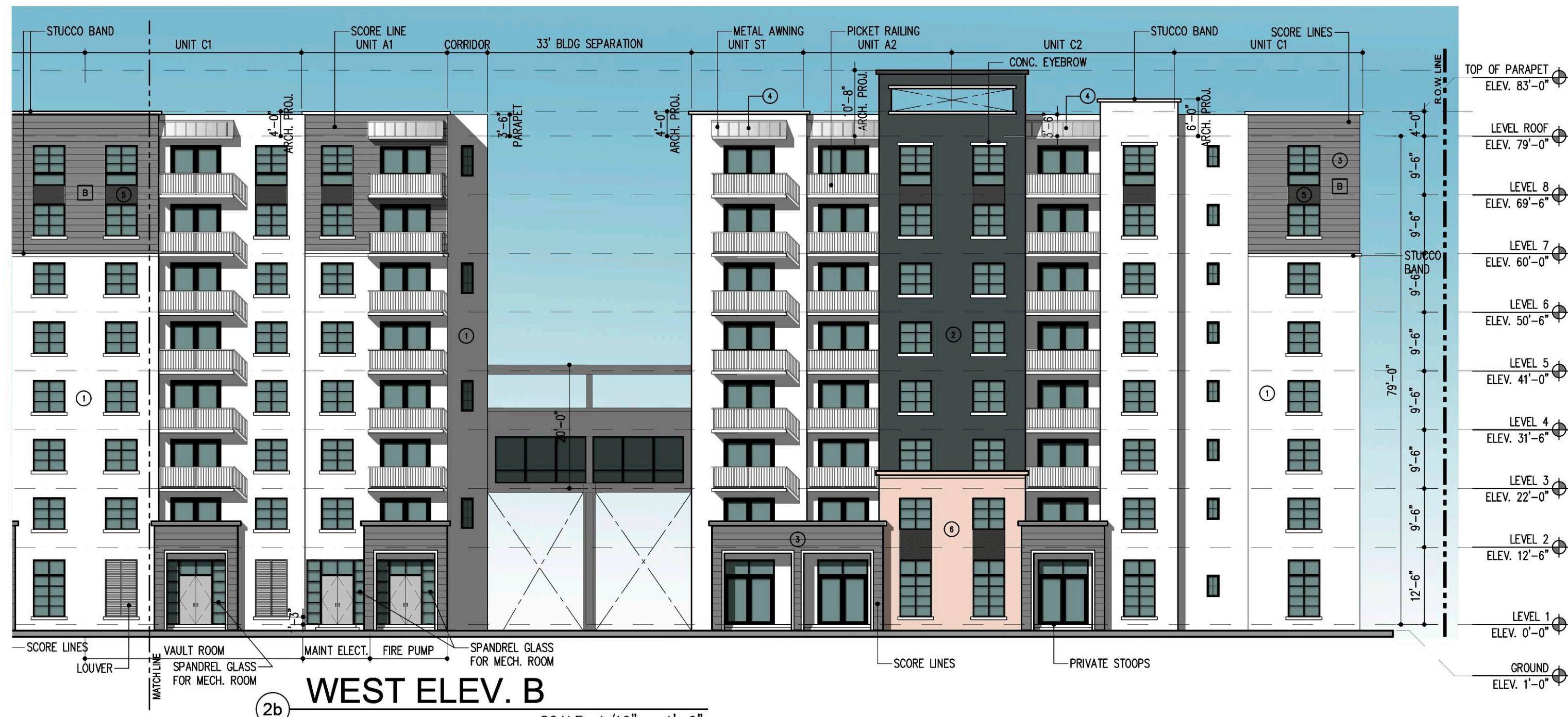
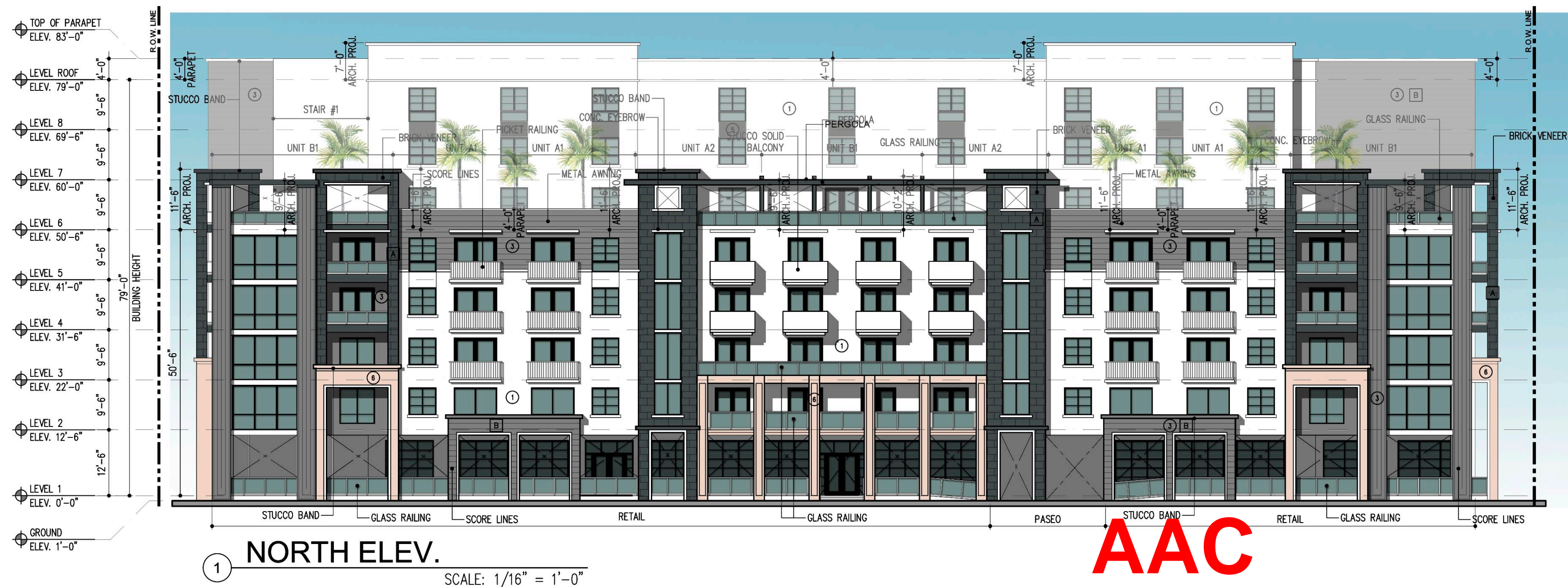




2a WEST ELEV. A
SCALE: 1/16" = 1'-0"

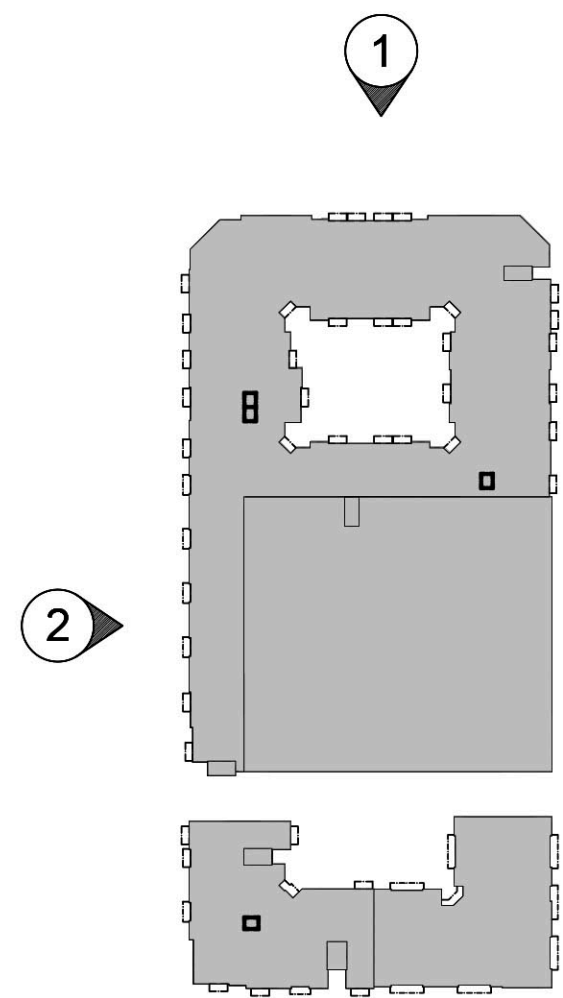
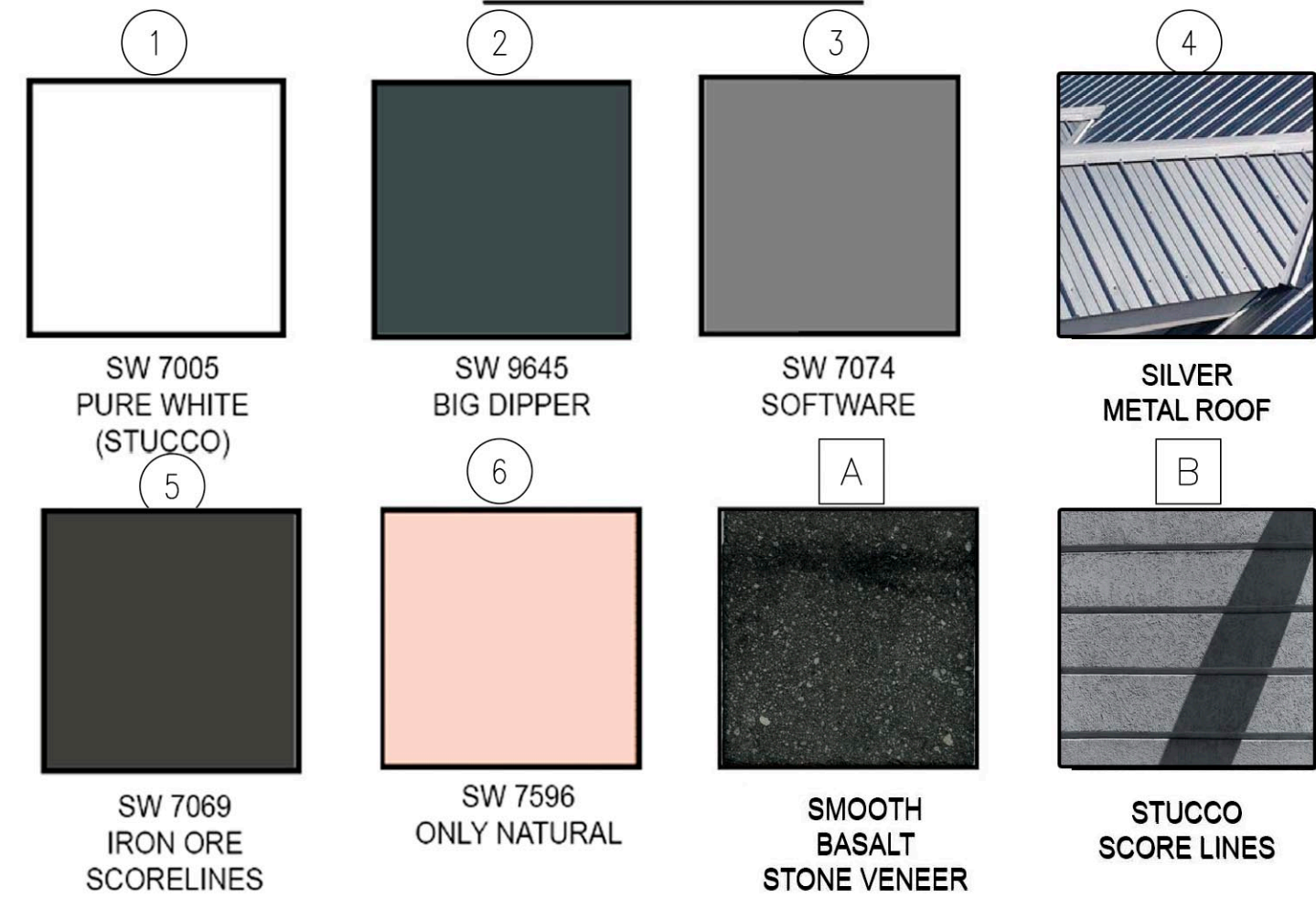


2b WEST ELEV. B
SCALE: 1/16" = 1'-0"



1 NORTH ELEV.
SCALE: 1/16" = 1'-0"

COLOR SCHEME



KEY PLAN
NTS

ELEVATIONS

SCALE: 1/16" = 1'-0"

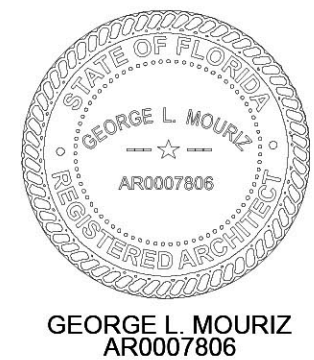
NOTE: Active uses along the ground floor will provide glazed areas with a minimum visible light transmittance of 75% and a minimum reflectance of 15%.

AAC

PZ25-12000001

08/06/2025

REVISIONS:	
ORC SUBMITTAL	02/24/2025
ORC RE-SUBMITTAL	04/16/2025
ORC RE-SUBMITTAL	05/23/2025
AAC SUBMITTAL	07/08/2025
DIGITAL SIGNATURE:	



POMPANO BEACH APTS
LOCATED AT:
POMPANO BEACH
FOR:
PORTMAN HOLDINGS

ARCHITECT'S BUILDING CODE STATEMENT/
TO THE BEST OF THE ARCHITECT'S
KNOWLEDGE, THE PLANS AND SPECIFICATIONS
COMPLY WITH THE FLORIDA BUILDING CODE
EIGHTH EDITION (2023) AND THE
APPLICABLE FIRE SAFETY STANDARDS AS
DETERMINED BY THE LOCAL AUTHORITY
AND CHAPTER 633 FLORIDA STATUTES.
COPYRIGHT © 2024 MSA ARCHITECTS, INC.
THE ARCHITECTURAL DESIGN AND DETAIL
DRAWINGS FOR THIS BUILDING AND/OR
OVERALL PROJECT ARE THE LEGAL
PROPERTY OF AND ALL RIGHTS ARE
RESERVED BY THE ARCHITECT. THEIR USE
FOR REPRODUCTION, CONSTRUCTION, OR
DISTRIBUTION IS PROHIBITED UNLESS
AUTHORIZED IN WRITING BY THE ARCHITECT.



MSA
ARCHITECTS, INC.
8950 SW 74TH CT #1513
MIAMI, FL 33156
P: (305) 273-9911



Project No: 2254.prj
Contract Date:
Scale:
TITLE:
ELEVATIONS

SHEET:

A-3.1