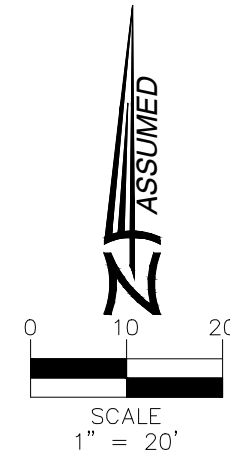
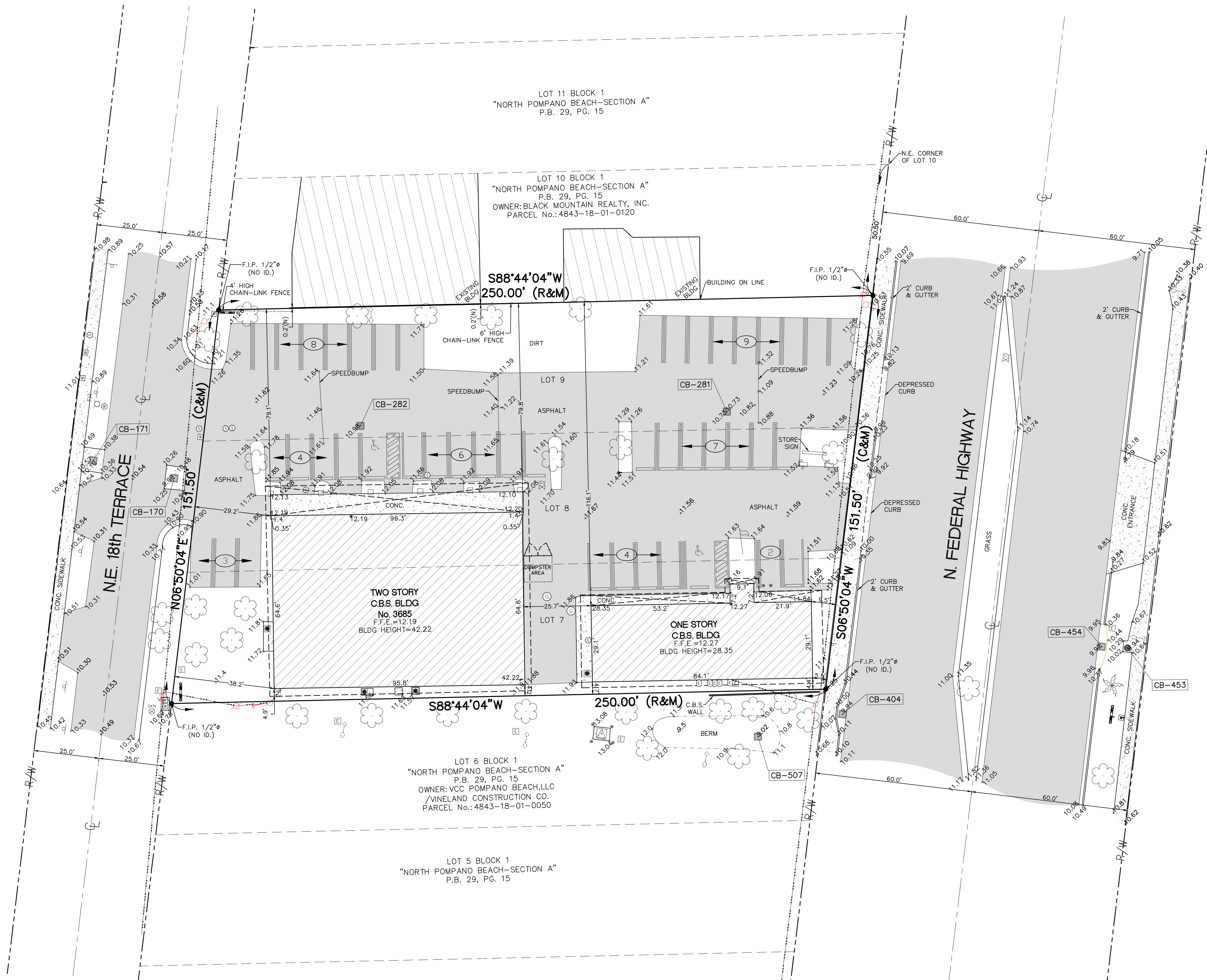


ALTA / NSPS LAND TITLE SURVEY

LOTS 7, 8, & 9, "NORTH POMPAÑO BEACH-SECTION A", PLAT BOOK 29, PAGE 15, BROWARD COUNTY, FLORIDA.



SYMBOL	DESCRIPTION
●	FOUND IRON REBAR
○	FOUND IRON PIPE WITH CAP
PL	PROPERTY LINE
R/W	RIGHT-OF-WAY
CBS	CONCRETE BLOCK STUCCO
N.C.V.D.	NATIONAL GEODETIC VERTICAL DATUM
PB	PLAT BOOK
PG	PAGE
F.N.D.	FOUND NAIL & DISK
→	NUMBER OF PARKING SPACES
S.I.P.	SET IRON PIPE
T.O.P.	TOP OF PIPE
SWK	SIDEWALK
P.O.B.	POINT OF BEGINNING
N.T.S.	NOT TO SCALE
T.B.M.	TEMPORARY BENCH MARK
F.F.E.	FINISH FLOOR ELEVATION
S.I.R.	SET IRON REBAR
F.D.H.	FOUND DRILL HOLE
F.I.P.	FOUND IRON PIPE
F.I.R.	FOUND IRON REBAR
⊕	BENCHMARK
⊕	EXISTING ELEVATION
○	TREE
○	PALM TREE
⊕	IRRIGATION CONTROL VALVE
T1	TREE NUMBER
CB-1	UTILITY STRUCTURE NUMBER
CB	CATCH BASIN
E	ELECTRIC UTILITY BOX
W	WATER METER
W	WATER VALVE
SS	SANITARY SEWER CLEAN OUT
SS	SANITARY SEWER MANHOLE
SS	SANITARY SEWER VALVE
SS	MANHOLE UNKNOWN
SS	DRAINAGE MANHOLE
SS	GREASE TRAP MANHOLE
SS	FIRE DEPT. CONNECTOR
SS	GAS METER
SS	TELECOMMUNICATIONS BOX
SS	MONITORING WELL
SS	FIRE HYDRANT
SS	LIGHT POST
SS	BACK-FLOW PREVENTER
SS	GUARDRAIL
SS	GUY ANCHOR
SS	POST
SS	SIGN
SS	MAILBOX
SS	FPL TRANSFORMER
SS	SIGNAL MAST ARM
SS	INTERCOM BOX
SS	CONCRETE UTILITY POLE
SS	WOOD UTILITY POLE
SS	CBS WALL
SS	CHAIN-LINK ROLLING GATE
SS	CHAIN-LINK SWING GATE
SS	FENCE_OTHER
SS	IRON WING GATE
SS	CHAIN-LINK FENCE
SS	CHAIN-LINK SWING GATE
SS	FENCE_OTHER
SS	PROPERTY LINE
SS	RIGHT-WAY LINE
SS	EASEMENT LINE
SS	X-UTL-DRAIN
SS	X-UTL-SANT
SS	OVERHEAD UTILITY LINE
SS	GRAVEL
SS	BRICK
SS	BUILDING HATCH
SS	CONCRETE
SS	TILE
SS	ASPHALT PAVEMENT
SS	HANDICAP TACTILE STRIP



LAND SURVEYOR AND MAPPERS
 3D LASER SCANNING
 UTILITY COORDINATION
 SUBSURFACE UTILITY ENGINEERING
 F. - (305) 607-8846 - W. www.hadonne.com

ALTA/NSPS LAND TITLE SURVEY
 for
 NATIONAL EXPRESS WASH, LLC.
 or
 3685 North Federal Highway, Pompano Beach, Florida, 33064

REV	DESCRIPTION
1	
2	
3	
4	
5	
6	
7	
8	
9	
10	

Field Book:

FILE

DRAWN BY:

MM

TECH BY:

RI

QA/QC BY:

JS

Job No.:

22023

Page:

2/2